

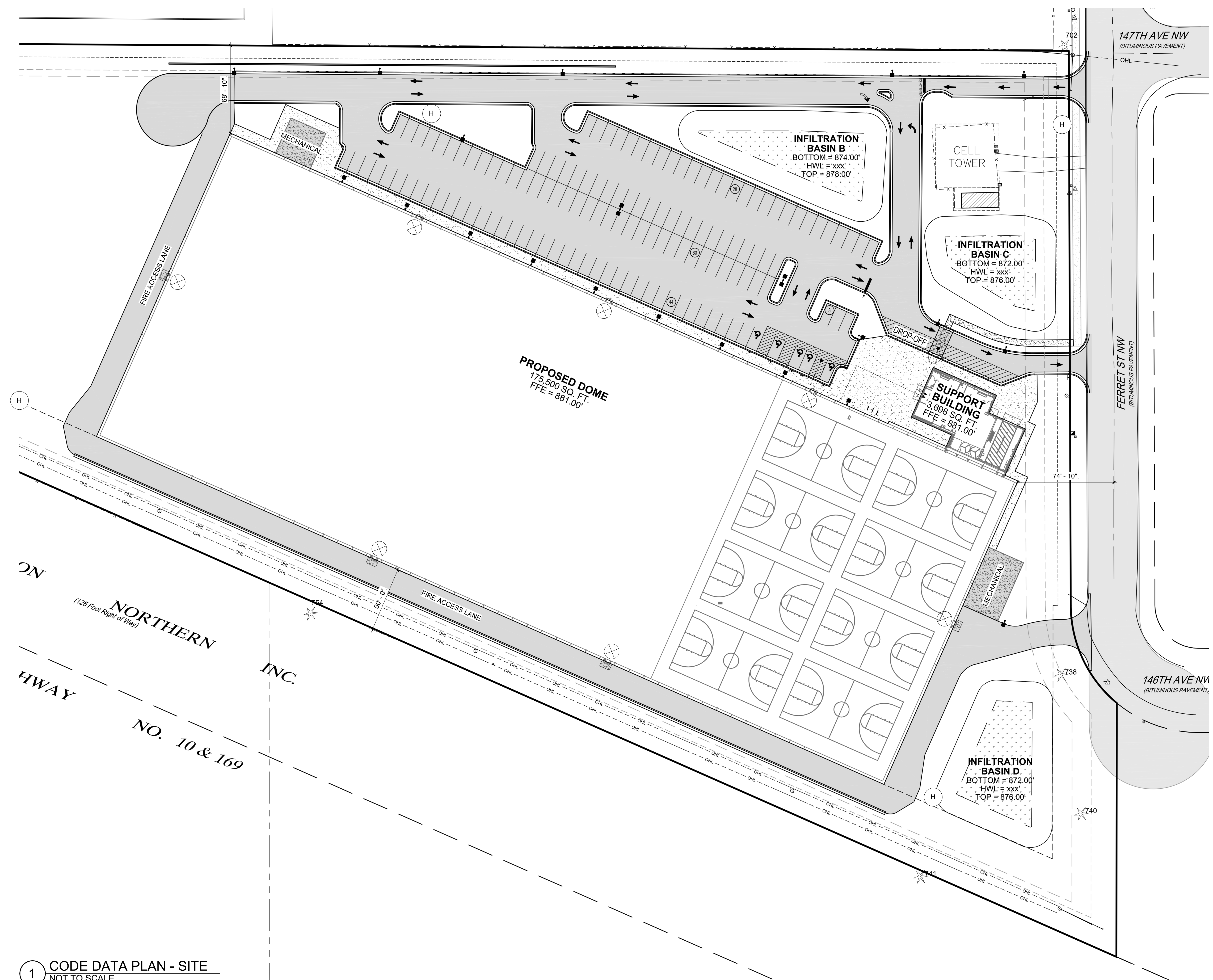


**CODE SUMMARY KEY**

CONSTRUCTION TYPE	II-B	A-4	OCCUPANCY GROUP
SPRINKLED SP OR NON-SPRINKLED NS	NS	Y	ALARM SYSTEM Y OR NO ALARM SYSTEM N
SPACE SQUARE FOOTAGE	171,776 SF		
OCCUPANT LOAD FACTOR	50	229	OCCUPANTS
EXIT WIDTH REQUIRED (INCHES)	59.8	544	EXIT WIDTH PROVIDED (INCHES)
NOTES	ACTUAL NUMBER OF PEOPLE		

**CODE DATA PLAN KEY**

	EXIT SIGN
	FIRE EXTINGUISHER
	FIRE EXTINGUISHER CABINET
	FRONTAGE DISTANCE
	KNOX BOX
	EMERGENCY LIGHT/BATTERY UNIT
	EXIT WIDTH IN INCHES EXIT OCCUPANT CAPACITY
	EXIT LIGHT
	MANUAL PULL
	HORN / STROBE
	BUILDING ADDRESS
	45° - 0" COMMON PATH OF TRAVEL 194' - 4" MAXIMUM EXIT TRAVEL DISTANCE
	30' x 48" CLEAR SPACE
	5' - 0" DIA. TURNING RADIUS
	HYDRANT
	ACCESSIBLE ROUTE
	PANIC DEVICE HARDWARE



THIS DOCUMENT IS THE PROPERTY OF I & S GROUP, INC. AND MAY NOT BE USED, COPIED OR DUPLICATED WITHOUT PRIOR WRITTEN CONSENT.

PROJECT

**ARAA DOME**

RAMSEY MINNESOTA

REVISION SCHEDULE		
DATE	DESCRIPTION	BY

PROJECT NO.	21-26051
FILE NAME	
DRAWN BY	KMA
DESIGNED BY	DFS / KMA
REVIEWED BY	DFS
ORIGINAL ISSUE DATE	01/13/23
CLIENT PROJECT NO.	

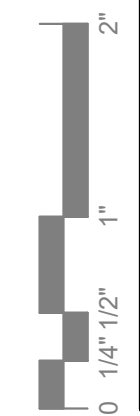
TITLE

**CODE DATA PLAN - SITE**

SHEET

**G1-21**

1 CODE DATA PLAN - SITE  
NOT TO SCALE



**PRELIMINARY NOT FOR CONSTRUCTION**

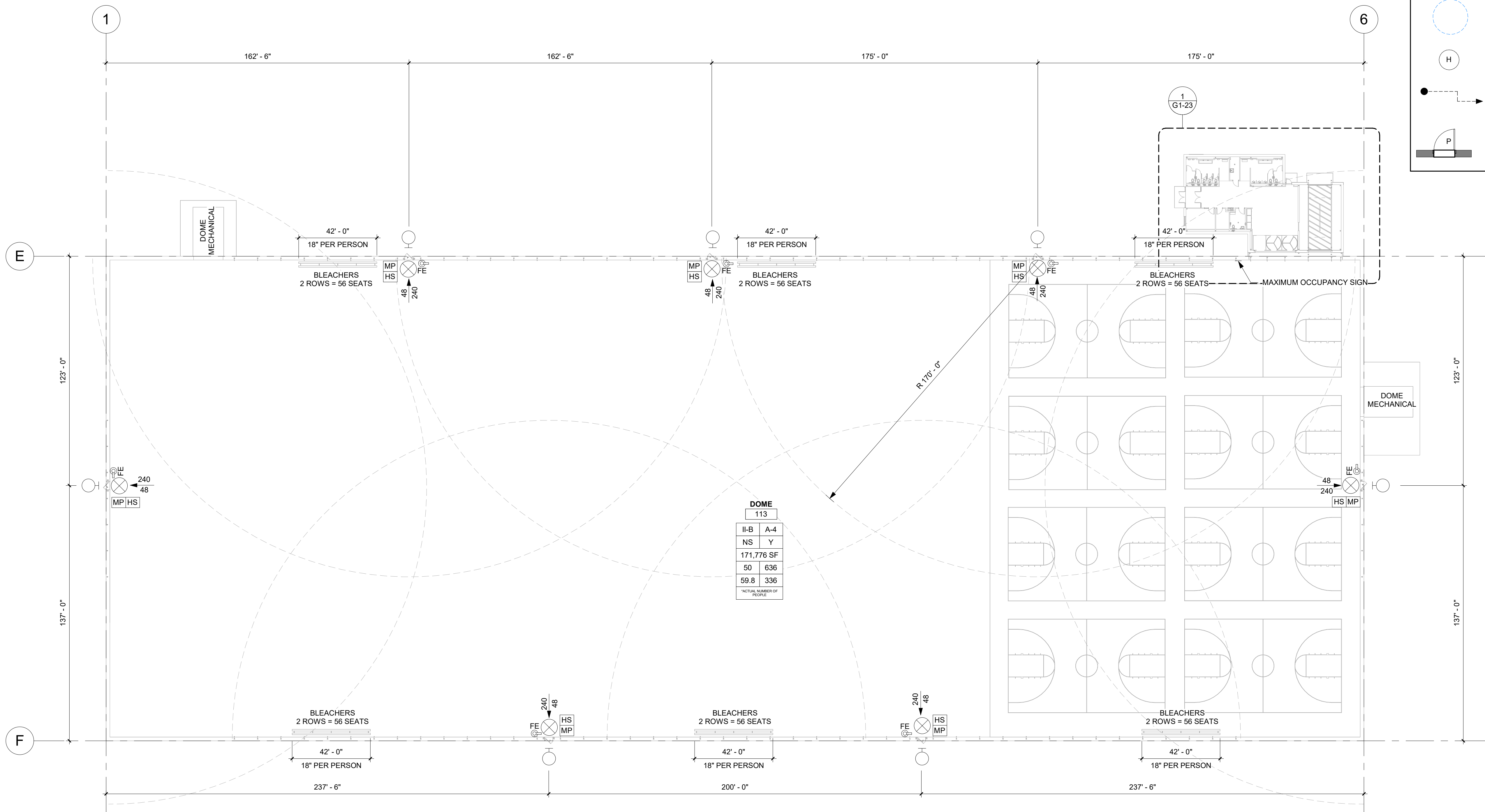


PRELIMINARY NOT FOR CONSTRUCTION

CODE SUMMARY KEY			
CONSTRUCTION TYPE	II-B	A-4	OCCUPANCY GROUP
SPRINKLED SP OR NON-SPRINKLED NS	NS	Y	ALARM SYSTEM Y OR NO ALARM SYSTEM N
SPACE SQUARE FOOTAGE	171,776 SF		
OCCUPANT LOAD FACTOR	50	229	OCCUPANTS
EXIT WIDTH REQUIRED (INCHES)	59.8	544	EXIT WIDTH PROVIDED (INCHES)
NOTES	ACTUAL NUMBER OF PEOPLE		

FIRE EXTINGUISHER LEGEND		
MARK	TYPE	COMMENTS
FE	FIRE EXTINGUISHER	
FEC	FULLY RECESSED FIRE EXTINGUISHER CABINET	CABINET COLOR: WHITE

CODE DATA PLAN KEY	
	EXIT SIGN
	FIRE EXTINGUISHER
	FIRE EXTINGUISHER CABINET
	FRONTAGE DISTANCE
	KNOX BOX
	EMERGENCY LIGHT/BATTERY UNIT
	EXIT WIDTH IN INCHES
	EXIT OCCUPANT CAPACITY
	EXIT LIGHT
	MANUAL PULL
	HORN / STROBE
	BUILDING ADDRESS
	45' - 0" COMMON PATH OF TRAVEL
	194' - 4" MAXIMUM EXIT TRAVEL DISTANCE
	30' x 48" CLEAR SPACE
	5' - 0" DIA. TURNING RADIUS
	HYDRANT
	ACCESSIBLE ROUTE
	PANIC DEVICE HARDWARE



DOME 113	
II-B	A-4
NS	Y
171,776 SF	
50	636
59.8	336
ACTUAL NUMBER OF PEOPLE	

THIS DOCUMENT IS THE PROPERTY OF I & S GROUP, INC. AND MAY NOT BE USED, COPIED OR DUPLICATED WITHOUT PRIOR WRITTEN CONSENT.

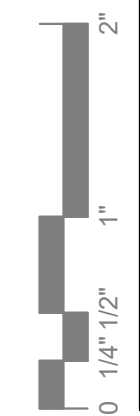
PROJECT		
<b>ARAA DOME</b>		
RAMSEY	MINNESOTA	
REVISION SCHEDULE		
DATE	DESCRIPTION	BY

PROJECT NO.	21-26051
FILE NAME	
DRAWN BY	KMA
DESIGNED BY	DFS / KMA
REVIEWED BY	DFS
ORIGINAL ISSUE DATE	01/13/23
CLIENT PROJECT NO.	

TITLE	
<b>CODE DATA PLAN - AREA B &amp; C</b>	

SHEET	<b>G1-22</b>
-------	--------------

**2** CODE DATA PLAN - AREA B & C  
1" = 30'-0"



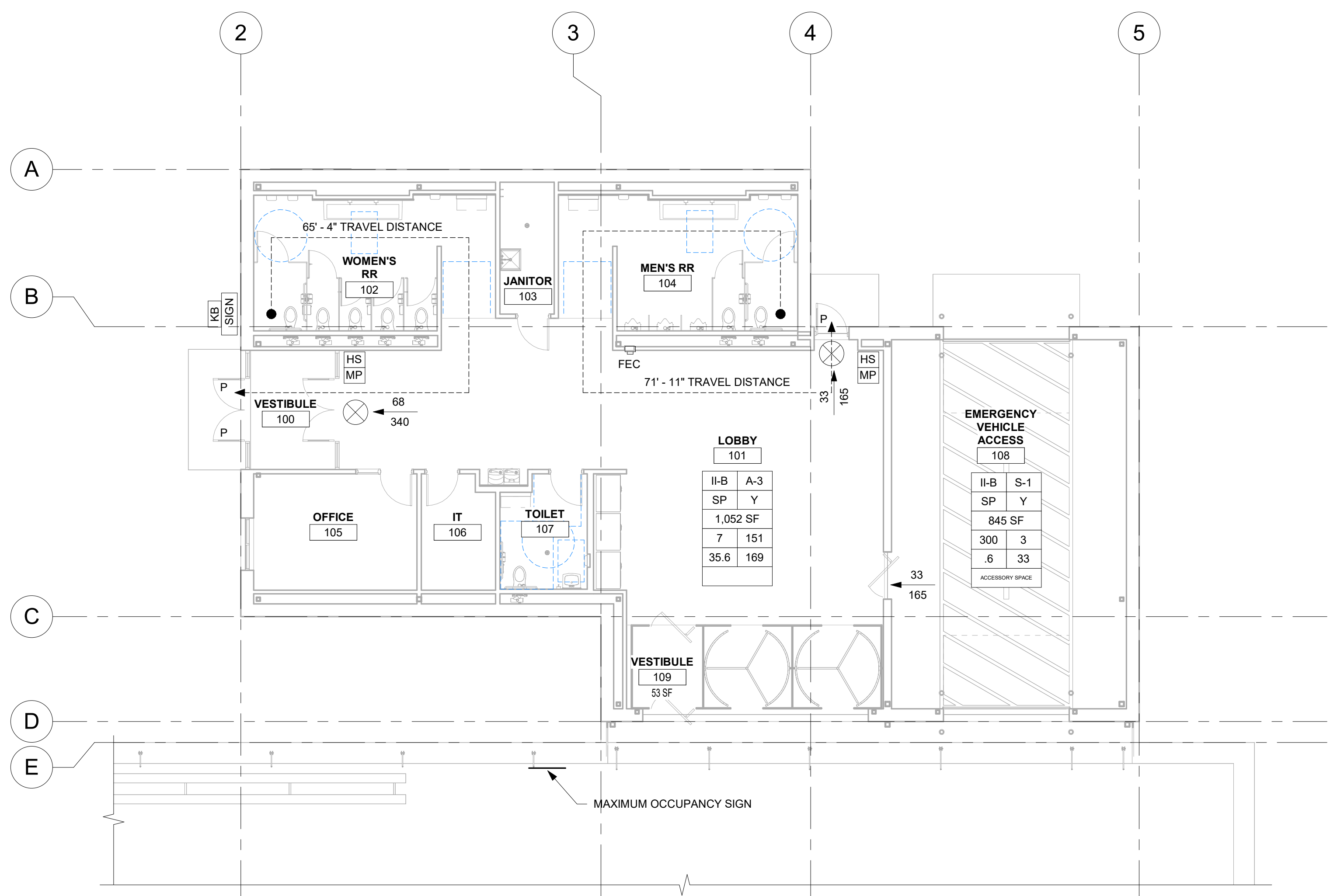


CODE SUMMARY KEY			
CONSTRUCTION TYPE	II-B	A-4	OCCUPANCY GROUP
SPRINKLED SP OR NON-SPRINKLED NS	NS	Y	ALARM SYSTEM Y OR NO ALARM SYSTEM N
SPACE SQUARE FOOTAGE	171,776 SF		
OCCUPANT LOAD FACTOR	50	229	OCCUPANTS
EXIT WIDTH REQUIRED (INCHES)	59.8	544	EXIT WIDTH PROVIDED (INCHES)
NOTES			ACTUAL NUMBER OF PEOPLE

FIRE EXTINGUISHER LEGEND		
MARK	TYPE	COMMENTS
FE	FIRE EXTINGUISHER	
FEC	FULLY RECESSED FIRE EXTINGUISHER CABINET	CABINET COLOR: WHITE

CODE DATA PLAN KEY	
	EXIT SIGN
	FIRE EXTINGUISHER
	FIRE EXTINGUISHER CABINET
	FRONTAGE DISTANCE
	KNOX BOX
	EMERGENCY LIGHT/BATTERY UNIT
	EXIT WIDTH IN INCHES
	EXIT OCCUPANT CAPACITY
	EXIT LIGHT
	MANUAL PULL
	HORN / STROBE
	BUILDING ADDRESS
	45' - 0" COMMON PATH OF TRAVEL
	194' - 4" MAXIMUM EXIT TRAVEL DISTANCE
	30' x 48" CLEAR SPACE
	5' - 0" DIA. TURNING RADIUS
	HYDRANT
	ACCESSIBLE ROUTE
	PANIC DEVICE HARDWARE

GENERAL CODE DATA	
<b>OWNER</b>	ANOKA RAMSEY ATHLETIC ASSOCIATION ANOKA, MINNESOTA 55303
<b>ARCHITECT</b>	ISG 7900 INTERNATIONAL DRIVE, SUITE 550 BLOOMINGTON, MINNESOTA 55425
<b>BUILDING LOCATION</b>	RAMSEY, MN
<b>BUILDING CODE</b>	2020 MINNESOTA BUILDING CODE 2020 MINNESOTA FIRE CODE 2020 MINNESOTA ENERGY CODE
<b>ACCESSIBILITY CODE</b>	2020 MINNESOTA ACCESSIBILITY CODE 2010 ADA STANDARDS FOR ACCESSIBLE DESIGN
<b>SCOPE</b>	CONSTRUCT A 175,500 SF MEMBRANE AIR SUPPORTED DOME WITH ACCESSORY 3,731 SF BUILDING HOUSING TOILETS, OFFICE, AND STORAGE. DOME IS TO OPERATE ALL YEAR ROUND.
<b>OCCUPANCY CLASSIFICATION AND USE</b>	ASSEMBLY GROUP A-4
<b>FIRE PROTECTION SYSTEMS</b>	SUPPORT BUILDING: FULLY SPRINKLED DOME: NON-SPRINKLED (SECTION 507.4, EXCEPTION 2)
<b>CONSTRUCTION TYPE</b>	TYPE II-B
<b>BUILDING HEIGHT</b>	TABULAR ALLOWABLE HEIGHT: 3 STORIES / 75 FEET ABOVE GRADE PLANE ACTUAL HEIGHT: 1 STORY / 78 FEET (VARIANCE BEING REQUESTED)
<b>BUILDING AREA</b>	ALLOWABLE AREA: UNLIMITED (SECTION 507.4, EXCEPTION 2)
<b>OCCUPANT LOAD</b>	SUPPORT SPACES: SEE PLAN FOR OCCUPANT LOADS ACCESSORY STORAGE / MECHANICAL: 300 SF / OCC ASSEMBLY SPACE: 7 SF / OCC BUSINESS AREAS: 150 / OCC
<b>DOMES</b>	636 ACTUAL MAXIMUM OCCUPANTS (ACTUAL OCCUPANT LOAD APPROVED BY BUILDING OFFICIAL PER 2020 MINNESOTA BUILDING CODE 1004.5 EXCEPTION)
<b>MEANS OF EGRESS</b>	MINIMUM NUMBER OF EXITS REQUIRED AT DOME: 4 MINIMUM NUMBER OF EXITS AT SUPPORT BUILDING: 2 ACTUAL NUMBER OF EXITS: SEE PLAN
	MINIMUM EGRESS WIDTH REQUIRED: SEE PLAN ACTUAL EGRESS WIDTH: SEE PLAN
	COMMON PATH OF EGRESS TRAVEL: 75 FEET MAXIMUM
	EXIT ACCESS TRAVEL DISTANCE: 250 FEET MAXIMUM
	PANIC HARDWARE OR FIRE EXIT HARDWARE REQUIRED AT LATCHING AND/OR LOCKING DOORS SERVING A GROUP "A" OCCUPANT LOAD OF 50 OR MORE
<b>PLUMBING FIXTURES REQUIRED</b>	636 OCCUPANTS / 2 = 318 MEN AND 318 WOMEN 318 / 125 = 3.54 (3) WATERCLOSETS FOR MEN 318 / 65 = 4.89 (5) WATERCLOSETS FOR WOMEN 318 / 200 = 1.59 (2) LAVATORIES FOR MEN 318 / 200 = 1.59 (2) LAVATORIES FOR WOMEN 636 / 500 = 1.27 (2) ACCESSIBLE DRINKING FOUNTAINS (1 HIGH SPOUT AND 1 LOW SPOUT) 1 SERVICE SINK
<b>PLUMBING FIXTURES PROVIDED</b>	<b>MENS</b> 2 WATER CLOSETS 3 URINALS 3 LAVATORIES
	<b>WOMENS</b> 5 WATER CLOSETS 3 LAVATORIES
	<b>UNI-SEX</b> 1 WATER CLOSET 1 LAVATORY
	1 JANITOR SINK 2 DRINKING FOUNTAINS



1 CODE DATA PLAN - AREA A  
1/8" = 1'-0"

THIS DOCUMENT IS THE PROPERTY OF I & S GROUP, INC. AND MAY NOT BE USED, COPIED OR DUPLICATED WITHOUT PRIOR WRITTEN CONSENT.

PROJECT

**ARAA DOME**

RAMSEY MINNESOTA

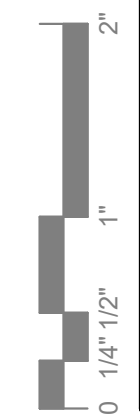
REVISION SCHEDULE		
DATE	DESCRIPTION	BY

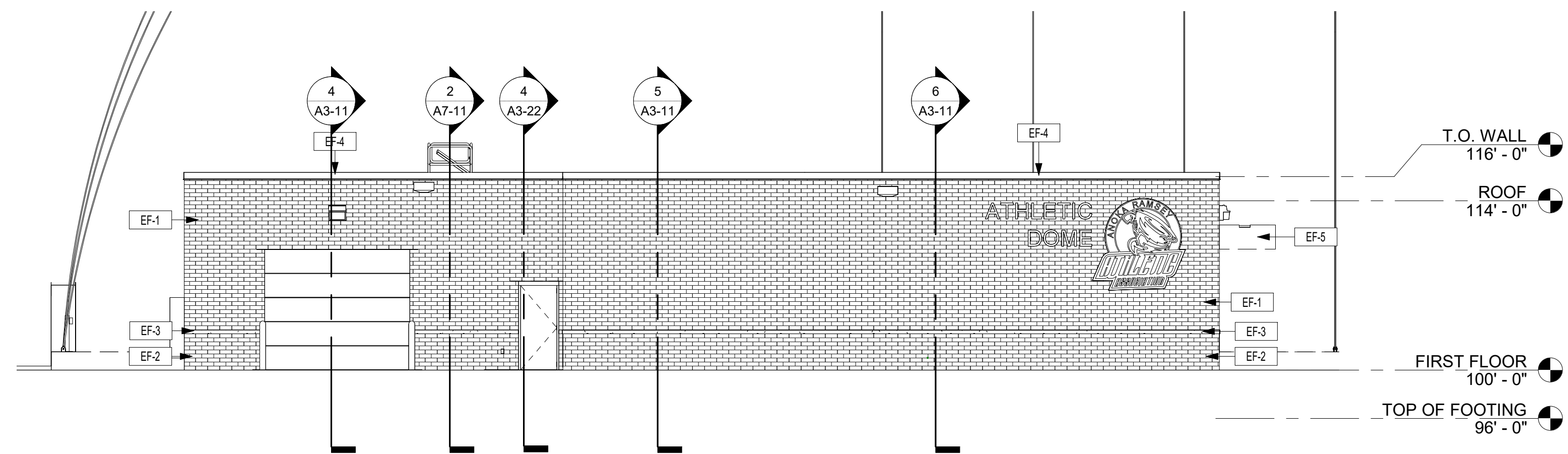
PROJECT NO.	21-26051
FILE NAME	
DRAWN BY	KMA
DESIGNED BY	DFS / KMA
REVIEWED BY	DFS
ORIGINAL ISSUE DATE	01/13/23
CLIENT PROJECT NO.	

TITLE  
**CODE DATA & CODE DATA PLAN - AREA A**

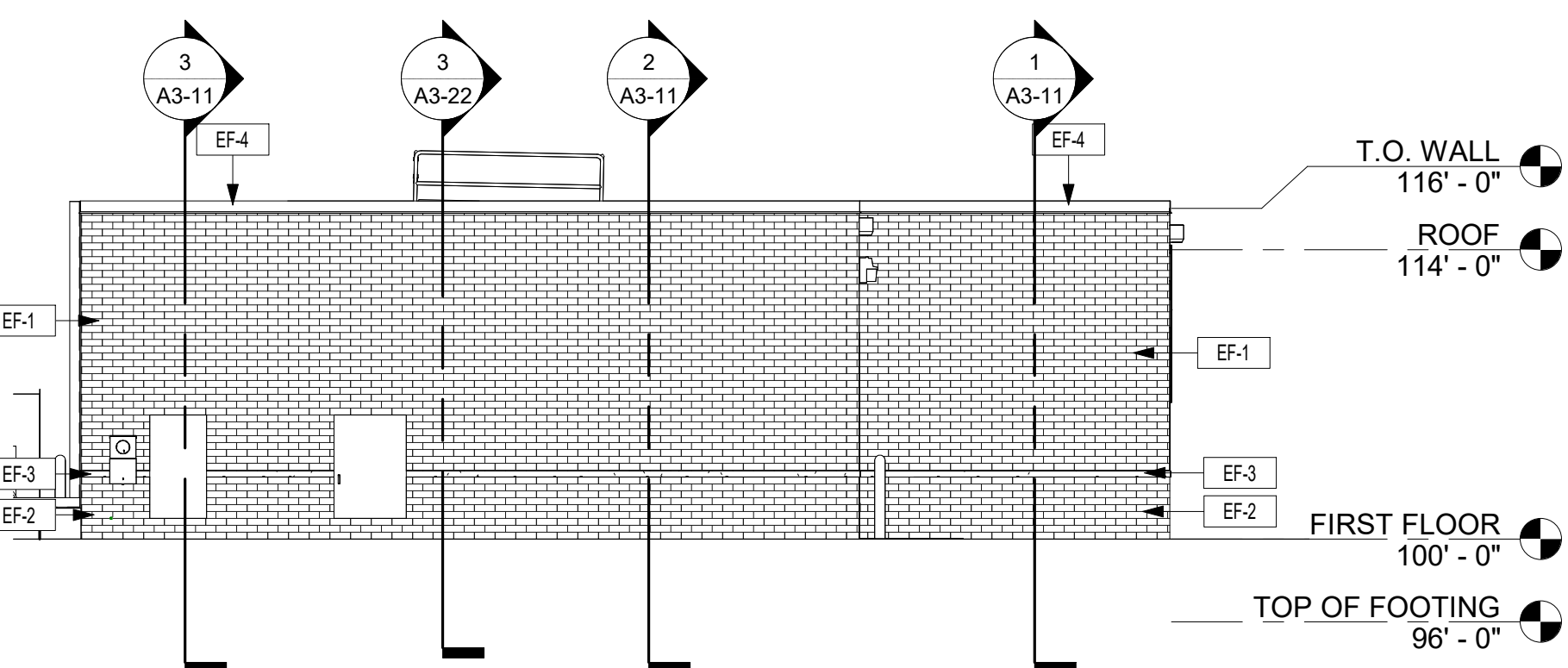
SHEET  
**G1-23**

PRELIMINARY NOT FOR CONSTRUCTION

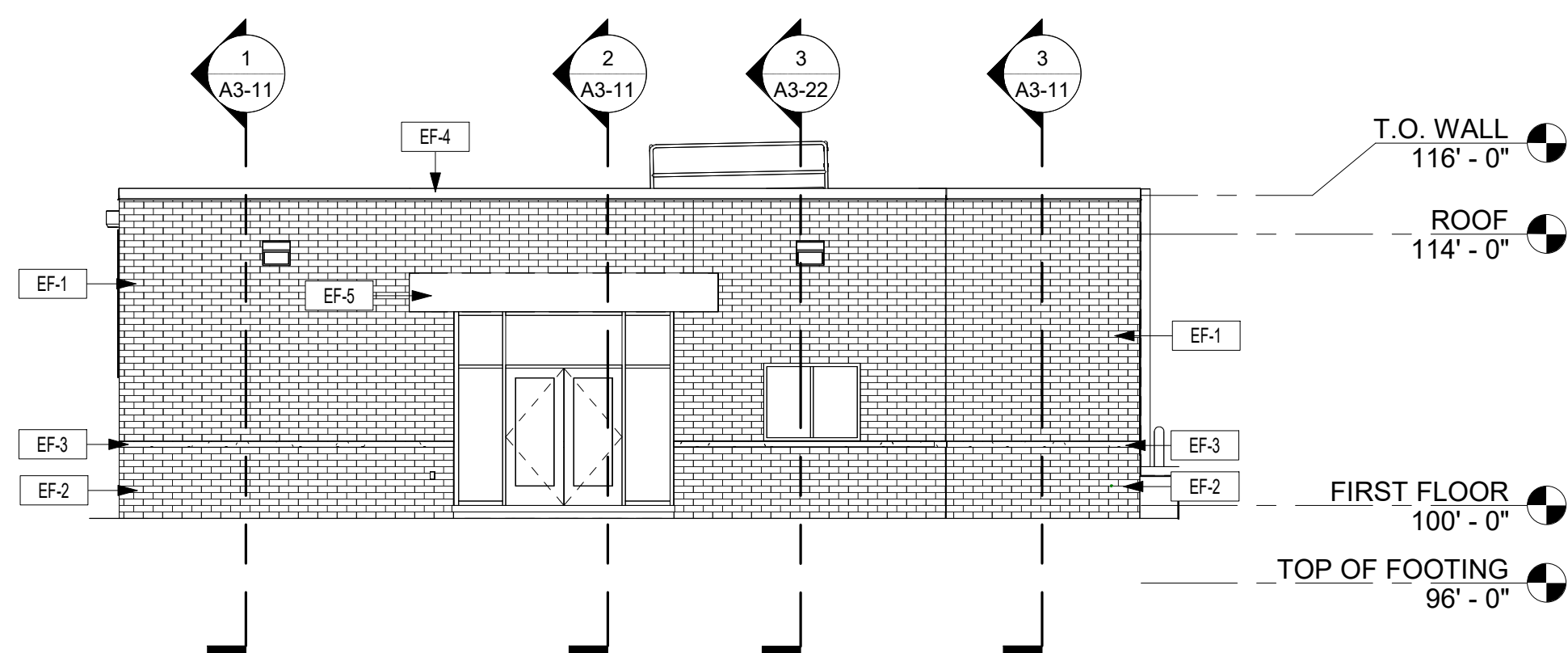




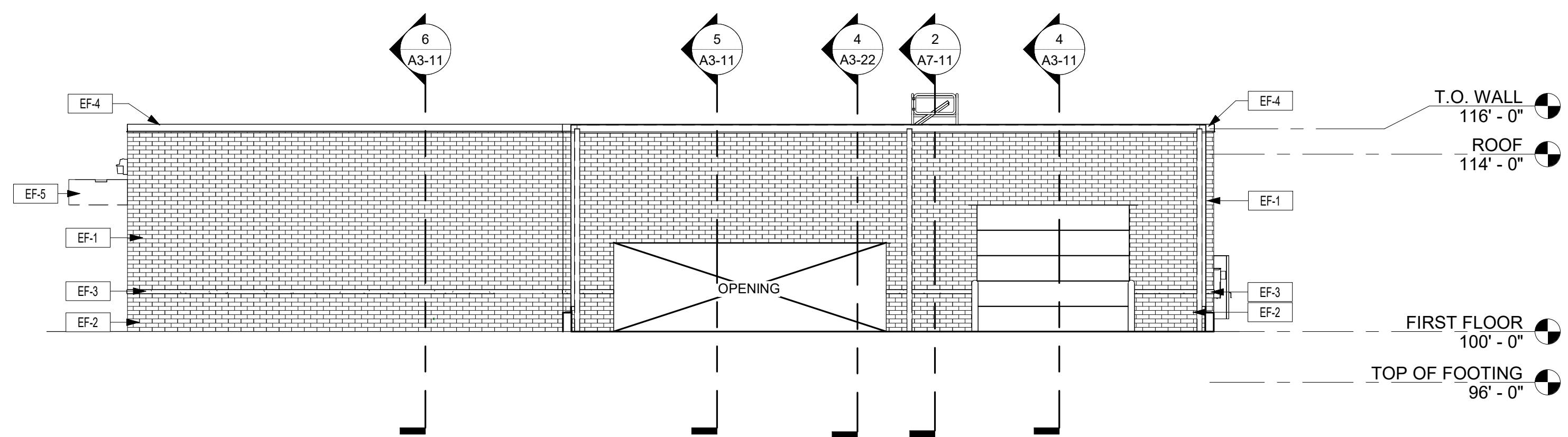
1 NORTH ELEVATION - AREA A  
1/8" = 1'-0"



2 EAST ELEVATION - AREA A  
1/8" = 1'-0"



3 WEST ELEVATION - AREA A  
1/8" = 1'-0"



4 SOUTH ELEVATION - AREA A  
1/8" = 1'-0"

EXTERIOR FINISH SCHEDULE						
MARK	MATERIAL TYPE	MANUFACTURER	MODEL / SIZE	COLOR	ADDITIONAL INFORMATION	COMMENTS
EF-1	BRICK	TBD	UTILITY	BLACK		
EF-2	BRICK	TBD	UTILITY	WHITE		
EF-3	BRICK	TBD	UTILITY	WHITE		BRICK TRANSITION
EF-4	PREFIN. MTL PARAPET CAP	TBD	-	BLACK		
EF-5	PREFIN. MTL PANEL	TBD	-	BLACK		CANOPY
EF-6	PREFIN. MTL SOFFIT PANEL	TBD	12" W	BLACK		CANOPY SOFFIT

\*HM DOORS AND FRAMES, ALUMINUM FRAMES, AND OVERHEAD DOOR TO BE BLACK.



THIS DOCUMENT IS THE PROPERTY OF I & S GROUP, INC. AND MAY NOT BE USED, COPIED OR DUPLICATED WITHOUT PRIOR WRITTEN CONSENT.

PROJECT

**ARAA DOME**

RAMSEY MINNESOTA

REVISION SCHEDULE		
DATE	DESCRIPTION	BY

PROJECT NO. 21-26051  
 FILE NAME  
 DRAWN BY KMA  
 DESIGNED BY DFS / KMA  
 REVIEWED BY DFS  
 ORIGINAL ISSUE DATE 01/10/23  
 CLIENT PROJECT NO.

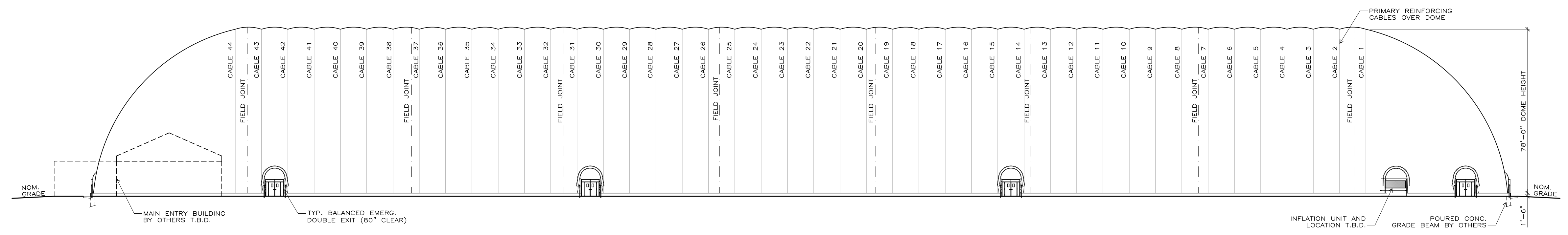
TITLE  
**EXTERIOR ELEVATIONS - AREA A**

SHEET  
**A2-11**

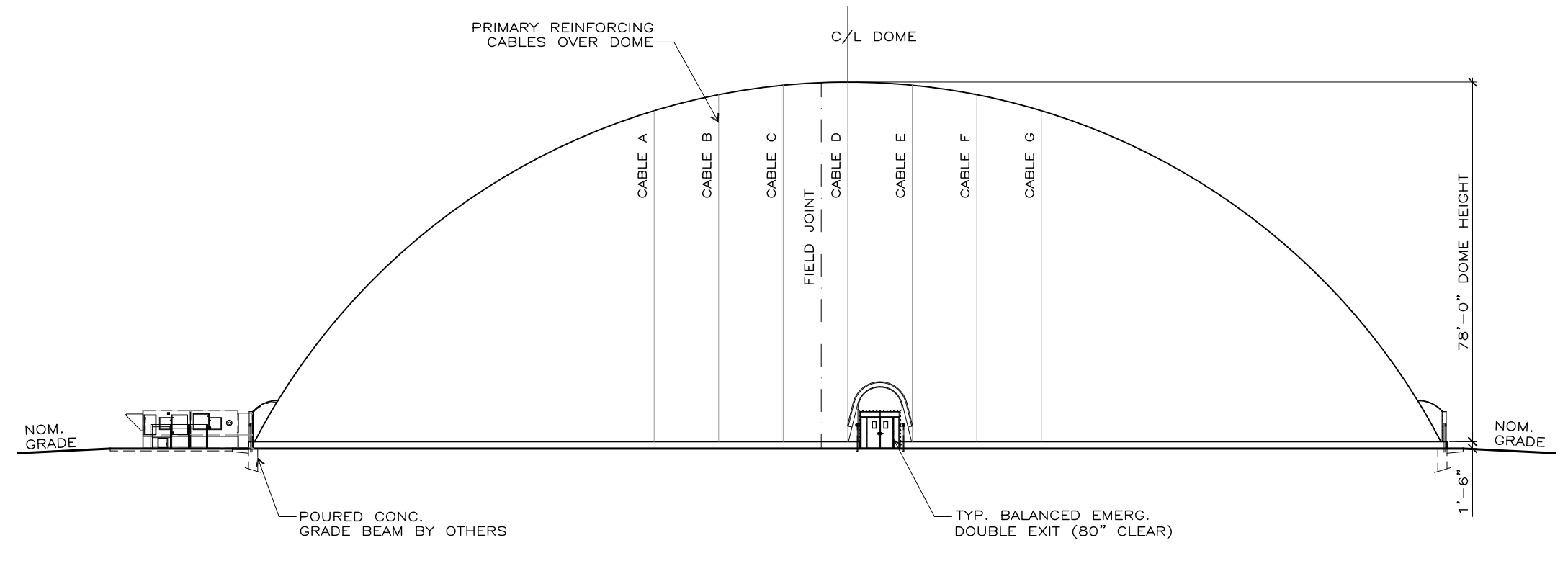


PRELIMINARY NOT FOR CONSTRUCTION

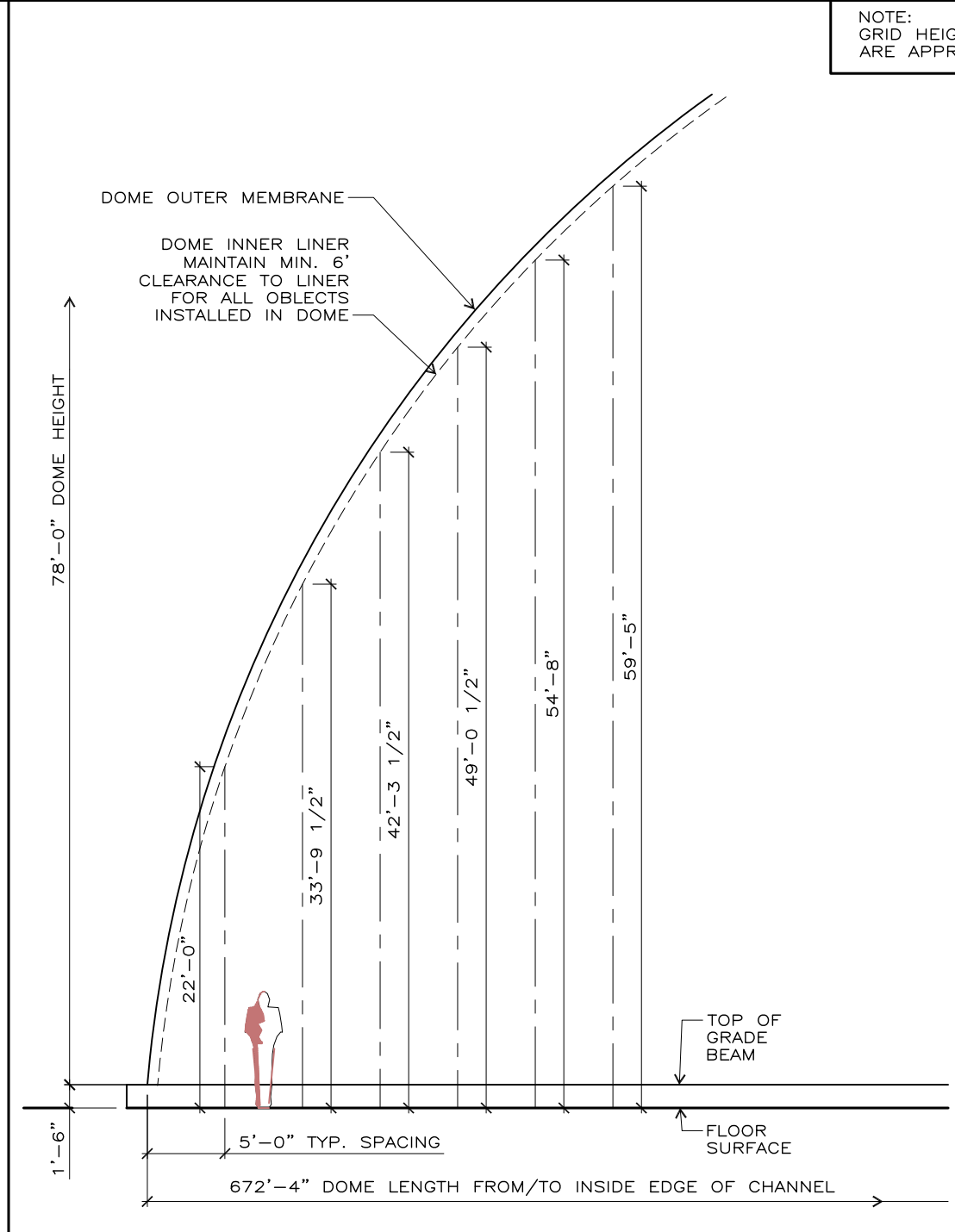
COPYRIGHT:  
YEADON FABRIC STRUCTURES LTD.  
THIS MATERIAL IS AN INSTRUMENT OF SERVICE AND SHALL REMAIN AT ALL TIMES THE PROPERTY OF YEADON FABRIC STRUCTURES LTD. REPRODUCTION OR REUSE OF THE MATERIAL CONTAINED HEREIN, OR ANY PART THEREOF, IS PROHIBITED WITHOUT THE WRITTEN CONSENT OF YEADON FABRIC STRUCTURES LTD. ALL INFORMATION SHOWN APPLIES TO THE DESIGNATED PROJECT ONLY. DRAWINGS SHALL NOT BE SCALED



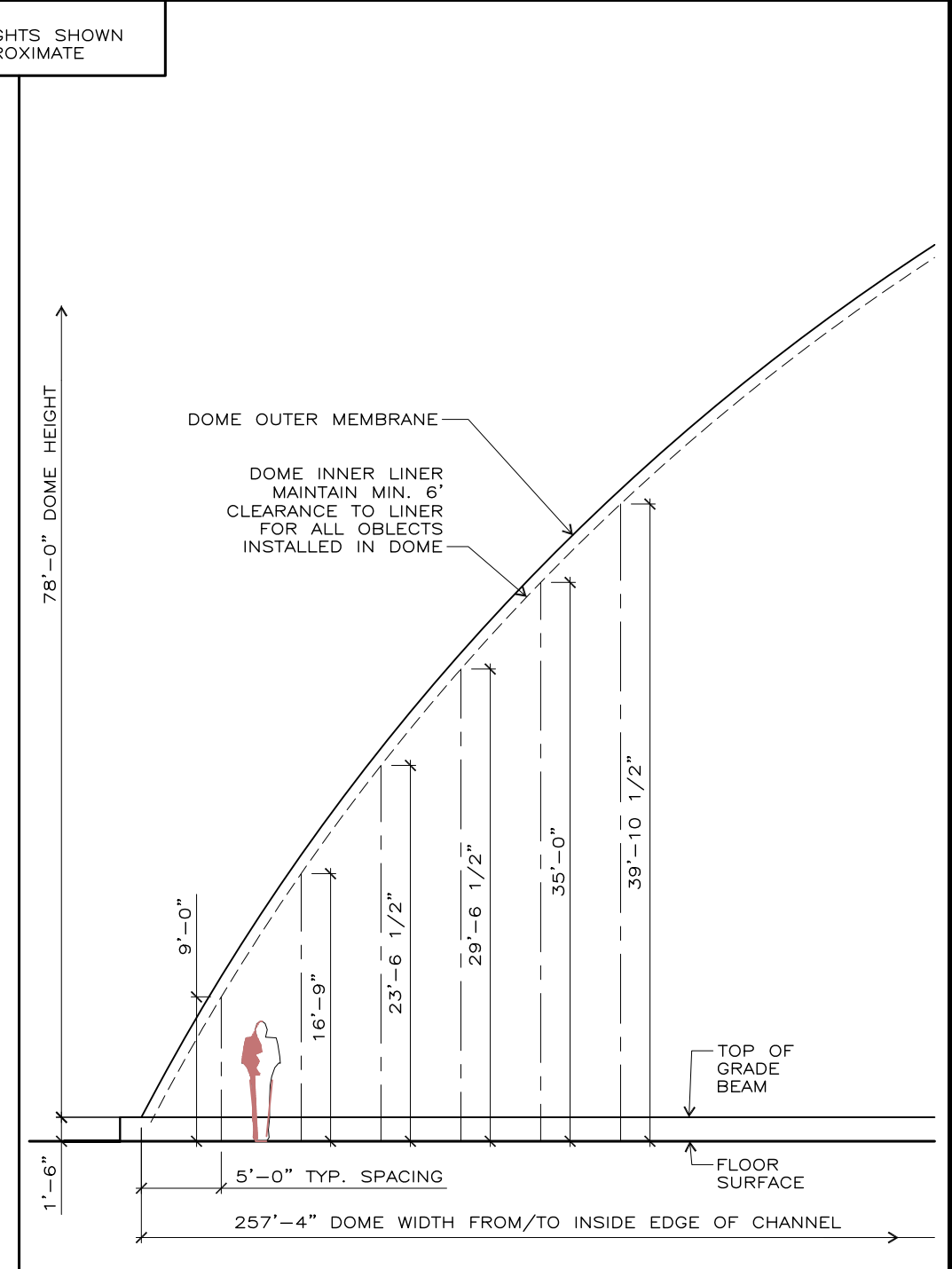
1 SIDE ELEVATION  
SCALE : 1"=30'-0"



2 END ELEVATION  
SCALE : 1"=30'-0"



3 APPROX. DOME PROFILE AT END  
SCALE : 3/32"=1'-0"



4 APPROX. DOME PROFILE AT SIDE  
SCALE : 3/32"=1'-0"

**GENERAL NOTES:**

**1. DESIGN LOADS:**  
i) THIS STRUCTURE IS AN AIR SUPPORTED STRUCTURE IN WHICH THE FABRIC IS SUPPORTED BY INTERNAL PRESSURE. THE INTERNAL PRESSURE IS MONITORED DAILY BY THE OWNER AND IS INCREASED PRIOR TO HIGHER WINDS OR TO SNOWFALLS, AS DIRECTED IN THE OWNER'S MANUAL, IN ORDER TO PROVIDE REQUIRED RESISTANCE TO THE WEATHER LOADS.  
ii) WIND : IN ACCORDANCE WITH 2015 IBC AND 2016 ASCE-7  
- 110 MPH (ULT.) EXPOSURE C, PRESSURE DISTRIBUTION TO 2016 ASCE 7.  
- RISK CATEGORY II, MAXIMUM OCCUPANCY IN DOME < 300  
iii) INTERNAL DESIGN PRESSURE :  
- INTERNAL DESIGN PRESSURE IS : 9.36 PSF (1.80" W.C.). THIS IS REQUIRED IN ORDER TO MAINTAIN STRUCTURAL INTEGRITY DURING WEATHER EVENTS.  
- DURING NON-WEATHER EVENTS, THE OWNER MAY REDUCE THE INTERNAL PRESSURE, AT THEIR OWN DISCRETION. MINIMUM INTERNAL PRESSURE IS : 3.9 PSF (0.75" W.C.).  
- STANDBY SET FOR 0.12 kPa (2.6 PSF, 0.5" W.C.) FOR THE "ON" VALUE.  
iv) SNOW :  
- GROUND SNOW 50PSF  
- SNOW IMPORTANCE FACTOR Is=1.1, SNOW EXPOSURE FACTOR Ce=0.9, THERMAL FACTOR Ct=0.85  
- DOME WILL SHED SNOW DUE TO CURVATURE OF MEMBRANE, INTERNAL PRESSURE AND HEAT. SNOW STARTS TO MELT ON CONTACT, THEN AS IT ACCUMULATES, A LAYER OF MELTWATER FORMS BETWEEN THE SNOW AND THE MEMBRANE SURFACE ALLOWING THE ACCUMULATED SNOW TO SLIDE OFF.  
- SNOW TO BE MANUALLY REMOVED BY OWNER IN EXTREME CONDITIONS EXIST (ASCE 55-16 6.11)  
- SNOW TO BE REMOVED FROM ALL SIDES OF DOME BY OWNER AFTER EVERY SNOWFALL  
- IF SNOW IS FORECAST, THE OWNER MUST HAVE PERSONNEL AVAILABLE TO MONITOR DOME OPERATION DURING THE SNOW EVENT.  
v) DEAD LOAD : SELF WEIGHT OF DOME, INSULATION AND CABLES

**2. STRUCTURAL:**  
ALL WORK SHALL CONFORM TO THE APPLICABLE CODES, LOCAL REGULATIONS AND AUTHORITIES HAVING JURISDICTION.  
THE ENGINEER SHALL BE GIVEN 48 HOURS MINIMUM NOTICE BY THE CONTRACTOR FOR ALL REQUIRED INSPECTIONS OF FOUNDATION, REINFORCING STEEL, STRUCTURAL STEEL AND FRAMING.  
THIS SET OF DRAWINGS REPLACES ALL PREVIOUS DRAWINGS.  
ALL SITE DISCREPANCIES SHALL BE REPORTED TO THE ENGINEER IMMEDIATELY. NO CHANGES SHALL BE MADE WITHOUT WRITTEN APPROVAL BY THE ENGINEER.  
ALL SURFACES OF STRUCTURES DIRECTLY EXPOSED TO THE INTERIOR OF THE AIR STRUCTURE SHALL BE DESIGNED TO WITHSTAND A MINIMUM OF 30 PSF OF AIR PRESSURE.  
FABRIC STRESS RELIEF CABLES ABOVE OPENINGS IN THE PRIMARY MEMBRANE SHALL BE DESIGNED AS CATENARY SPANS OF STEEL CABLE, SELECTED AND SUPPLIED BY YEADON FABRIC STRUCTURES IN ACCORDANCE WITH THE FABRIC STRESS CALCULATIONS PROVIDED BY THE ENGINEER FOR THIS PROJECT.  
THIS AIR STRUCTURE HAS BEEN DESIGNED USING CSA DOCUMENT CSA S367-12 AND ASCE 55-16 AS GUIDES.

**3. EXCAVATION AND BACKFILL:**  
SOIL CONDITIONS SHALL BE REPORTED TO THE ENGINEER AT THE TIME OF EXCAVATION AND AT HIS DISCRETION THE ENGINEER MAY REQUIRE FURTHER SOILS INVESTIGATION, OR MODIFICATIONS TO THE GRADE BEAM DESIGN.  
REMOVE ALL TOP SOIL AND DELETERIOUS MATERIAL FROM BENEATH ALL STRUCTURE COMPONENTS.  
USE ONLY ENGINEER APPROVED COMPACTED FILL TO RAISE GRADES WHERE REQUIRED BENEATH STRUCTURES.  
COMPACT ALL GRANULAR FILL TO 98% SPDD. COMPACTION TESTING SHALL BE CARRIED OUT BY A QUALIFIED GEOTECHNICAL CONSULTANT PRIOR TO INSTALLATION OF ANY STRUCTURES SUPPORTED ON FILL.  
SLOPE ALL GRADES AWAY FROM THE AIR STRUCTURE AND ITS COMPONENTS.  
PROTECT EXCAVATIONS AND GRADE BELOW SLABS FROM FROST PENETRATION BY PROPER USE OF STRAW, THERMAL BLANKETS AND TARPS.

**4. CONCRETE:**  
ALL CONCRETE AND REBAR SHALL CONFORM TO ACI CODE 318-LATEST EDITION.  
CONCRETE STRENGTH SHALL BE 3000 PSI, 6% +/-1% AIR ENT. IN ALL CASES, UNLESS OTHERWISE SPECIFIED.  
USE ONLY GRADE 60 (60,000 PSI) DEFORMED REBAR.  
APPROPRIATE MEASURES SHALL BE TAKEN TO PROTECT CONCRETE FROM EXCESSIVE EVAPORATIVE WATER LOSS AND ENSURE PROPER CURING.  
ALL CONCRETE SHALL BE TESTED BY AN ACI CERTIFIED CONCRETE TESTING LABORATORY.  
USE HIGH FREQUENCY VIBRATION TO PLACE ALL CONCRETE.  
APPROPRIATE MEASURES SHALL BE TAKEN TO PROTECT CONCRETE FROM EXPOSURE TO FREEZING TEMPERATURES FOR AT LEAST (7) DAYS FOLLOWING CONCRETE PLACEMENT.  
PROVIDE GROUT CLEANED RUBBED FINISH IN ACCORDANCE WITH ACI 301-10 FOR ALL FORMED CONCRETE SURFACES EXPOSED TO VIEW.  
ENSURE 2" MINIMUM COVER FOR ALL REBAR IN FORMED CONCRETE, 3" MINIMUM COVER FOR CONCRETE POURED AGAINST SOIL.  
PROVIDE VERTICAL CONTROL JOINTS @ 20'-0" O.C. MAX. LOCATE MID DISTANCE BETWEEN CABLE ANCHORAGE. KEY EA. FACE 1" MIN AND CAULK. CUT EVERY OTHER HORIZ. BAR.  
RE-BAR LAP/SPLICE LENGTHS:  
#4 = 22"  
#5 = 28"  
#6 = 32"

**5. ELECTRICAL NOTES:**  
(SEE ALSO ELECTRICAL DRAWINGS BY OTHERS ISSUED FOR THIS PROJECT)  
EXITS:  
THE CONTRACTOR SHALL PROVIDE (1) 277V/15A DEDICATED CIRCUIT FOR EMERGENCY LIGHTING ONLY AND ALL EMERGENCY LIGHTS SHALL BE POWERED BY THIS CIRCUIT.  
POWER SUPPLY FOR EMERGENCY EXITS SHALL BE BROUGHT WITHIN 12" OF EACH EXIT DOOR OPENING AS LOCATED IN THE CONSTRUCTION DRAWINGS.  
WHERE THE POWER SUPPLY IS RUN IN CONDUIT CAST INTO THE FOUNDATION GRADE BEAM, 10" CLEARANCE MUST BE PROVIDED BELOW FINISHED CONCRETE SURFACE TO AVOID CONTACT WITH ANCHOR BOLTS.  
LIGHTING:  
POWER SUPPLY FOR LIGHT FIXTURES SHALL BE BROUGHT TO RECEPTACLE BOXES AS LOCATED IN THE CONSTRUCTION DRAWINGS.  
ELECTRICAL CONTRACTOR TO TRIM AND INSTALL PLUG ENDS ON EACH LIGHT CORD IN PROPER LOCATIONS.  
VOLTAGE, AMPERAGE AND J-BOX LOCATIONS SHALL BE CONFIRMED BY THE CONTRACTOR TO YEADON FABRIC STRUCTURES, IN WRITING, PRIOR TO COMMENCEMENT OF ELECTRICAL WORK.  
IT IS RECOMMENDED THAT LIGHTING CONTRACTORS BE USED WITH REMOTE LOCATION SWITCHING AT A CONTROL POINT, LOCATED BY THE OWNER / DEVELOPER.  
FOR SUSPENDED LIGHTING, EVERY EFFORT IS MADE TO ALIGN LIGHTS VERTICALLY AND HORIZONTALLY, DUE TO THE CURVATURES OF THE DOME AND THE DIFFERING LOCATIONS OF THE FIXTURES ON THE INDIVIDUAL PANELS, VARIATIONS IN HEIGHT AND HORIZONTAL ALIGNMENTS MAY OCCUR. OTHER FACTORS SUCH AS DOME PRESSURE MAY ALSO AFFECT THE LOOK AND ALIGNMENT OF THE FIXTURES.

**6. MECHANICAL EQUIPMENT:**  
SEE MECHANICAL DRAWINGS (BY OTHERS) ISSUED FOR THIS PROJECT.  
POWER SUPPLY FOR MECHANICAL EQUIPMENT SHALL BE BROUGHT TO LOCATIONS AS INDICATED ON THE CONSTRUCTION DRAWINGS. (NOTE: EQUIPMENT IS SUPPLIED WITH MAIN DISCONNECT).  
VOLTAGE AND AMPERAGE REQUIREMENTS SHALL BE CONFIRMED BY THE CONTRACTOR TO YEADON FABRIC STRUCTURES IN WRITING, PRIOR TO COMMENCEMENT OF ELECTRICAL WORK.  
THE ELECTRICAL CONTRACTOR SHALL COMPLETE ALL ELECTRICAL TERMINATIONS AND CONNECTIONS.  
THE INFLATION UNIT IS SLIT IN SECTIONS FOR SHIPPING, FIELD ASSEMBLY REQUIRED. ELECTRICAL CONTRACTOR IS RESPONSIBLE FOR CONNECTING THE ELECTRICAL SPLITS ON THE SECTIONS.  
ELECTRICAL CONTRACTOR SHALL TEST ROTATION PRIOR TO MANUFACTURER FACTORY STARTUP.  
FOR PRESSURE SENSING TUBING, ELECTRICAL CONTRACTOR TO PROVIDE AND INSTALL 3/4" CONDUIT FROM CONTROL PANEL TO STUB UP IN BOX INSTALLED IN GRADE BEAM IN DOME INTERIOR, AND FROM CONTROL PANEL TO ATMOSPHERE, TO TERMINATE IN BOX WITH SCREENED VENT.  
FOR BOTTOM DISCHARGE UNITS, ELECTRICAL CONTRACTOR TO PROVIDE AND INSTALL TEMPERATURE SENSORS IN THE DISCHARGE AND RETURN AIR DUCTS.  
FOR REMOTE PC/MOBILE ACCESS, ELECTRICAL CONTRACTOR TO PROVIDE CONDUIT AND INSTALL ETHERNET CABLE FROM REMOTE PC LOCATION TO INFLATION UNIT.  
OWNER TO PROVIDE IP ADDRESS AND PC CONNECTED AT TIME OF INSTALL FOR REMOTE ACCESS OPTION.

**7. FABRIC SPECIFICATIONS:**

	STYLE 8028	STYLE 9032
SHELTER RITE		
BASE TYPE	POLYESTER	POLYESTER
FABRIC WEIGHT	(7.5 oz/yd <sup>2</sup> )	(10.0 oz/yd <sup>2</sup> )
FINISHED COATED WEIGHT	(28 +/-2/-1 oz/yd <sup>2</sup> )	(32 +/-2/-1 oz/yd <sup>2</sup> )
ASTM D751		
TONGUE TEAR	(8" x10" SAMPLE @ 12"/MIN.)	(8" x10" SAMPLE @ 12"/MIN.)
ASTM D751	(275/275 lbr)	(300/300 lbr)
TRAPEZOID TEAR	(85/85 lbr)	(100/100 lbr)
ASTM D4533		
GRAB TENSILE	(700/700 lbr)	(840/840 lbr)
ASTM D751		
STRIP TENSILE	(515/515 lbr/in)	(650/650 lbr/in)
ASTM D751 PROCEDURE B		
ADHESION (MINIMUM)	(10 lbr/in)	(10 lbr/in)
ASTM D751 DIELECTRIC WELD		
HYDROSTATIC RESISTANCE	(500 psf)	(500 psf)
ASTM D751 PROCEDURE A		
DEAD LOAD	(2" SEAM, 4 HRS, 1" STRIP)	(2" SEAM, 4 HRS, 1" STRIP)
MIL-T-52283E (MODIFIED)	(133 lbr @ ROOM TEMPERATURE)	(133 lbr @ ROOM TEMPERATURE)
PARA 4.5.2.19		
LOW TEMPERATURE	(LTC: PASS @ -40° F)	(LTC: PASS @ -40° F)
ASTM D2135		
1/8" MANDREL 4HRS	(LTA: PASS @ -67° F)	(LTA: PASS @ -67° F)
FLAME RESISTANCE		
MEETS NFPA 701; CAN/ULC-5109; ASTM 6413-2 SECOND FLAMEOUT		
REGISTERED BY CALIFORNIA FIRE MARSHAL (NO. F-10301); GB824-2008;		
ASTM E84 & ULC-5102 - FLAME SPREAD INDEX <25, SMOKE DEVELOPMENT RATING <450		

NO.	DESCRIPTION	DATE

REVISIONS:

SEAL:

**PRELIMINARY**  
NOT FOR CONSTRUCTION

**PROJECT:**  
ANOKA RAMSEY ATHLETIC ASSOCIATION MULTI SPORT DOME

**PROJECT LOCATION:**  
RAMSEY, MN.

**DRAWING:**  
ELEVATIONS GEN. NOTES

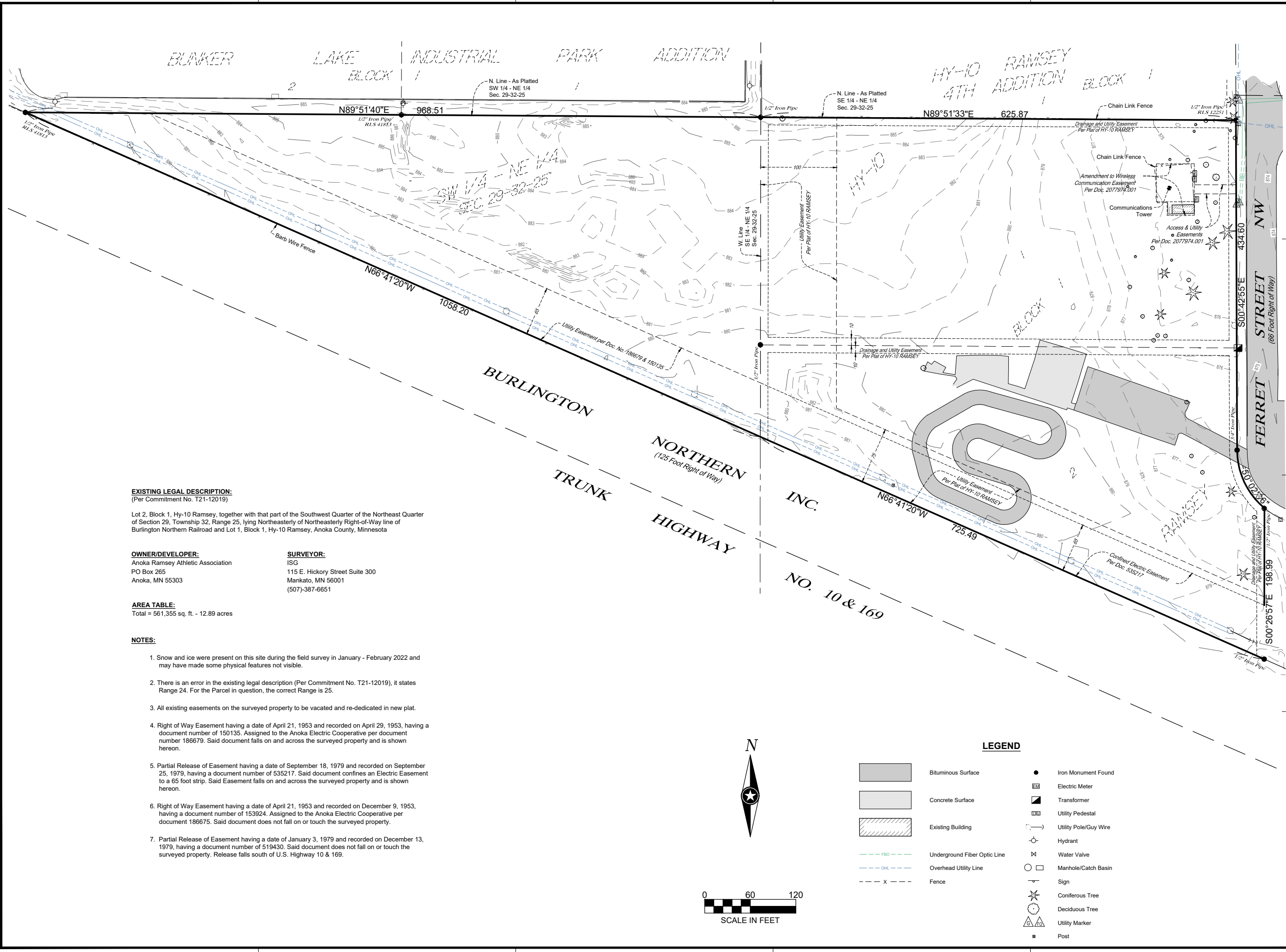
**SCALE:**  
AS NOTED

**DATE:**  
02/DEC/22

**DRAWN BY:**  
R.K./D.K.

**APPROVED BY:**  
D.K.

**PROJECT NO.:**  
DWG. NO.  
**AS-2**



**EXISTING LEGAL DESCRIPTION:**  
(Per Commitment No. T21-12019)

Lot 2, Block 1, Hy-10 Ramsey, together with that part of the Southwest Quarter of the Northeast Quarter of Section 29, Township 32, Range 25, lying Northeastly of Northeastly Right-of-Way line of Burlington Northern Railroad and Lot 1, Block 1, Hy-10 Ramsey, Anoka County, Minnesota

**OWNER/DEVELOPER:**

Anoka Ramsey Athletic Association  
PO Box 265  
Anoka, MN 55303

**SURVEYOR:**

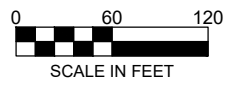
ISG  
115 E. Hickory Street Suite 300  
Mankato, MN 56001  
(507)-387-6651

**AREA TABLE:**

Total = 561,355 sq. ft. - 12.89 acres

**NOTES:**

- Snow and ice were present on this site during the field survey in January - February 2022 and may have made some physical features not visible.
- There is an error in the existing legal description (Per Commitment No. T21-12019), it states Range 24. For the Parcel in question, the correct Range is 25.
- All existing easements on the surveyed property to be vacated and re-dedicated in new plat.
- Right of Way Easement having a date of April 21, 1953 and recorded on April 29, 1953, having a document number of 150135. Assigned to the Anoka Electric Cooperative per document number 186679. Said document falls on and across the surveyed property and is shown hereon.
- Partial Release of Easement having a date of September 18, 1979 and recorded on September 25, 1979, having a document number of 535217. Said document confines an Electric Easement to a 65 foot strip. Said Easement falls on and across the surveyed property and is shown hereon.
- Right of Way Easement having a date of April 21, 1953 and recorded on December 9, 1953, having a document number of 153924. Assigned to the Anoka Electric Cooperative per document 186675. Said document does not fall on or touch the surveyed property.
- Partial Release of Easement having a date of January 3, 1979 and recorded on December 13, 1979, having a document number of 519430. Said document does not fall on or touch the surveyed property. Release falls south of U.S. Highway 10 & 169.



**LEGEND**

- Bituminous Surface
- Concrete Surface
- Existing Building
- Underground Fiber Optic Line
- Overhead Utility Line
- Fence
- Iron Monument Found
- Electric Meter
- Transformer
- Utility Pedestal
- Utility Pole/Guy Wire
- Hydrant
- Water Valve
- Manhole/Catch Basin
- Sign
- Coniferous Tree
- Deciduous Tree
- Utility Marker
- Post

I HEREBY CERTIFY THAT THIS SURVEY, PLAN, OR REPORT WAS PREPARED BY ME OR UNDER MY DIRECT SUPERVISION AND THAT I AM A DULY LICENSED LAND SURVEYOR UNDER THE LAWS OF THE STATE OF MINNESOTA.

DATE \_\_\_\_\_ LIC. NO. \_\_\_\_\_

THIS DOCUMENT IS THE PROPERTY OF I & S GROUP, INC. AND MAY NOT BE USED, COPIED OR DUPLICATED WITHOUT PRIOR WRITTEN CONSENT.

PROJECT

**ANOKA RAMSEY ATHLETIC ASSOCIATION NEW DOME**

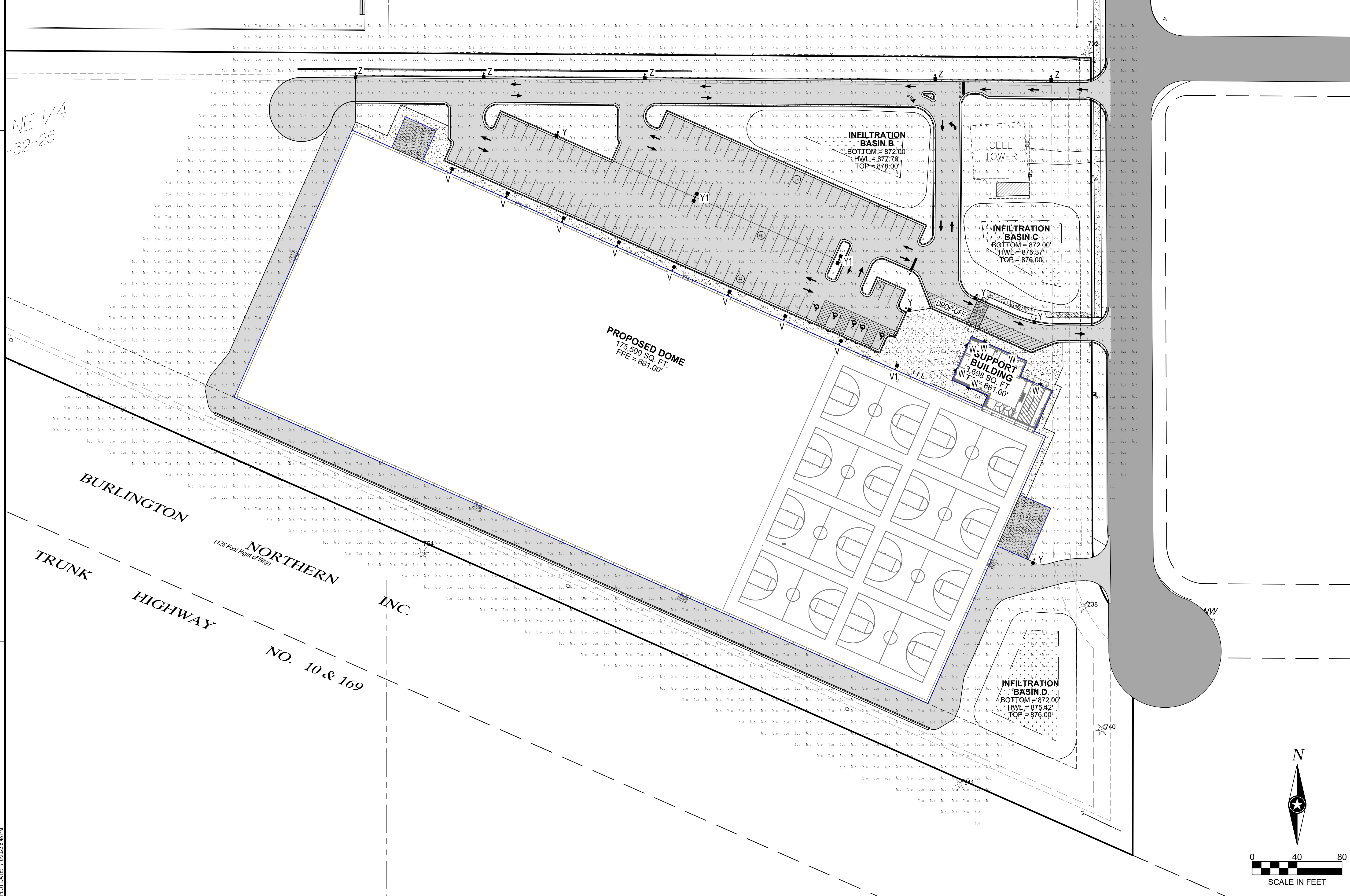
RAMSEY MINNESOTA

REVISION SCHEDULE		
DATE	DESCRIPTION	BY

PROJECT NO.	22-26051
FILE NAME	26051 SKETCH PLAN
DRAWN BY	RK
DESIGNED BY	---
REVIEWED BY	---
ORIGINAL ISSUE DATE	---/---/---
CLIENT PROJECT NO.	---

**SKETCH PLAN**

LIGHT FIXTURE SCHEDULE										
Label	Manufacturer	Catalog Number	Description	Lamp	Mounting Height	Lamp Lumens	LLF	Watts (120-277V)	Remarks	
V	NLS LIGHTING	NV-1 SERIES (TYPE 2 DIST)	AREA LIGHT - SINGLE FIXTURE	LED	15'	9017	0.9	70	15' AFG OVERALL HEIGHT - SINGLE MOUNTED FIXTURE	
V1	NLS LIGHTING	NV-1 SERIES (TYPE 4 DIST)	AREA LIGHT - SINGLE FIXTURE	LED	15'	8307	0.9	70	15' AFG OVERALL HEIGHT - SINGLE MOUNTED FIXTURE	
W	NLS LIGHTING	NV-W SERIES (TYPE 4 DIST)	WALL PACK	LED	13'	4388	0.9	37	WALL MOUNTED AT 13' TO CENTER OF FIXTURE	
Y	NLS LIGHTING	NV-2 SERIES (TYPE 4 DIST)	AREA LIGHT - SINGLE FIXTURE	LED	30'	24000	0.9	200	30' AFG OVERALL HEIGHT - SINGLE MOUNTED FIXTURE	
Y1	NLS LIGHTING	NV-2 SERIES (TYPE 4 DIST)	AREA LIGHT - DUAL HEAD FIXTURE	LED	30'	48000	0.9	400	30' AFG OVERALL HEIGHT - DUAL FIXTURES MOUNTED AT 180 DEGREES	
Z	NLS LIGHTING	NV-2 SERIES (TYPE 4 DIST)	AREA LIGHT - SINGLE FIXTURE	LED	30'	20160	0.9	168	30' AFG OVERALL HEIGHT - SINGLE MOUNTED FIXTURE WITH HOUSE SIDE SHIELD	



**NOTE:**  
THE CLARITY OF THESE PLANS DEPEND UPON COLOR COPIES. IF THIS TEXT DOES NOT APPEAR IN COLOR, THIS IS NOT AN ORIGINAL PLAN SET AND MAY RESULT IN MISINTERPRETATION.

I HEREBY CERTIFY THAT THIS PLAN, SPECIFICATION OR REPORT WAS PREPARED BY ME OR UNDER MY DIRECT SUPERVISION AND THAT I AM A DULY LICENSED PROFESSIONAL ENGINEER UNDER THE LAWS OF THE STATE OF MINNESOTA.  
REESE A. SUDELGTGE

DATE 12/15/2022 LIC. NO. 54243

I HEREBY CERTIFY THAT THIS PLAN, SPECIFICATION OR REPORT WAS PREPARED BY ME OR UNDER MY DIRECT SUPERVISION AND THAT I AM A DULY LICENSED ARCHITECT UNDER THE LAWS OF THE STATE OF MINNESOTA.  
MITCHELL R. WORKMON

DATE 12/15/2022 LIC. NO. 53748

THIS DOCUMENT IS THE PROPERTY OF I & S GROUP, INC. AND MAY NOT BE USED, COPIED OR DUPLICATED WITHOUT PRIOR WRITTEN CONSENT.

PROJECT  
**ANOKA RAMSEY ATHLETIC ASSOCIATION NEW DOME**

RAMSEY MINNESOTA

REVISION SCHEDULE		
DATE	DESCRIPTION	BY

PROJECT NO. 22-26051  
FILE NAME 26051 C6-ELEC  
DRAWN BY AJR  
DESIGNED BY AJR  
REVIEWED BY RAS  
ORIGINAL ISSUE DATE 12/16/2022  
CLIENT PROJECT NO. -

TITLE  
**PHOTOMETRIC PLAN**

SHEET  
**C6-10**

PLOT DATE: 11/02/2022 8:48 PM

PRELIMINARY NOT FOR CONSTRUCTION

**NLS LIGHTING NV-1**  
AREA, SITE & ROADWAY

**FORM AND FUNCTION**

- Sleek, low profile housing
- Spec grade performance
- Engineered for optimum thermal management
- Low depreciation rate
- Reduces energy consumption and costs up to 65%
- Exceeds IES foot candle levels utilizing the least number of poles and fixtures per project
- Optical system designed for:
  - Parking Lots
  - Auto Dealerships
  - General Area Lighting

**CONSTRUCTION**

- Die Cast Aluminum
- External cooling fins
- Corrosion resistant external hardware
- One-piece silicone gasket ensures IP-65 seal for electronics compartment
- One-piece Optics Plate™ mounting silicone Micro Optics
- Two-piece silicone Micro Optic system ensures IP-67 level seal around each PCB
- Grade 2 Clear Anodized Optics Plate™ standard

**FINISH**

- 3-5 mils electrostatic powder coat.
- NLS' standard high-quality finishes prevent corrosion, protects against extreme environmental conditions

**WARRANTY**

Five-year limited warranty for drivers and LEDs.




**LED WATTAGE CHART**

	16L	32L	48L	64L
350 milliamps	17w	-	-	-
530 milliamps	26w	-	-	-
700 milliamps	35w	71w	106w	141w
1050 milliamps	52w	104w	156w	208w

Project Name: \_\_\_\_\_ Type: \_\_\_\_\_

Cat#	Light Dist.	# of LEDs	Milliamps	Kelvin	Volts	Mounting	Color	Options
NV-1	Type 2 (T2)	16 (16L)	350 (3S)	2700K, 70 CRI (27K70)	120-277 (UNV)	Architectural Swing Arm (ASA)	Bronze Textured (BRZ)	Red Spikes (RS) Marine Grade Finish (MGF) Optic Plate Painted to Match Fixture (OPPF) Nema 7-Pin Receptacle (P7) Photoacoustic Receptacle (PAC) Receptacle + Shorting Cap (PSC)
	Type 3 (T3)	32 (32L)	530 (5S)	2700K, 80 CRI (27K80)	347-480 (HV)	Direct Pole 9" Arm Single, D180° (DP9)	White Textured (WHT)	FSP-211 with Motion Sensor (FSP-211MS) FSP-211 with 2' Pole Height (FSP-211-2P) Quick Mount Bracket (QMB) Retrolite Mount Bracket (RMB) Round Pole Adaptor 3" - 6" Pole (RPA3) Round Pole Adaptor 3" - 6" Pole (RPA4)
	Type 4 (T4)	48 (48L)	700 (7S)	3000K, 70 CRI (30K70)	347-480 (HV)	Direct Pole 11" Arm D180, D90, T90, T120, Quad (DP11)	Smooth White Glass (SWT)	Rotated Optic Light (ROL) Automotive House Side Shield (AHS) Black Hardware (BH)
	Type 5 (T5)	64 (64L)	1050 (10S)	3000K, 80 CRI (30K80)	347-480 (HV)	Knuckle Mount (KM)	Silver (SVN)	Rotated Optic Light (ROL) Automotive House Side Shield (AHS) Black Hardware (BH)
	Nema 2 24" Narrow Beam (N2)	64 (64L)	1050 (10S)	3500K, 80 CRI (35K80)	347-480 (HV)	Wall Mount (WM)	Black Textured (BLK)	Rotated Optic Light (ROL) Automotive House Side Shield (AHS) Black Hardware (BH)
	Nema 3 30" Narrow Beam (N3)	64 (64L)	1050 (10S)	4000K, 70 CRI (40K70)	347-480 (HV)	Turnmount Mount (TM)	Smooth Black Glass (SBK)	Rotated Optic Light (ROL) Automotive House Side Shield (AHS) Black Hardware (BH)
				4000K, 80 CRI (40K80)		Tennis Arm (TA)	Graphite Textured (GPH)	
				5000K, 70 CRI (50K70)		Master Arm (MA)	Grey Textured (GRY)	
				5000K, 80 CRI (50K80)			Custom (CS)	

Notes:  
 1. Consult Factory for Lead Time, Consult Factory for 90 CRI Requests.  
 2. For Round Pole Specify RPA3 or RPA4.  
 3. Standard Finish is stainless steel. Can be painted to match fixture.  
 4. Universal Voltage 120-277.  
 5. 1050 or lower must be selected to meet International Dark Sky Association certification.

REV 12.01.22

TYPE V, V1  
NTS

**NLS LIGHTING NV-W**  
ARCHITECTURAL HIGH PERFORMANCE FULL CUTOFF WALL PACK

**KEY FEATURES**

- Ideal for Exterior Walls, Entryways, Pathways, New Construction and Renovation, Warehouse and Receiving Docks, Court Yards, and School Playgrounds
- Sleek Minimalistic Design of the NV-W (up to 11,000 Lumens, 12"W x 9"D x 5.5"H). Complements the Design of the NV-W2 (up to 24,000 Lumens, 19"W x 9.38"D x 5"H)
- 2700K, 3000K, 3500K, 4000K, 5000K CCT. Multichip High Power 70 & 80 CRI LEDs
- IP65 Rated Against Dust & Water Ingress, IK10 Rated for Tamper/Vandalism/Impact Protection
- 20KA Surge Protection (120V - 480V) Cold Weather Integrated Battery Back-Up Safety Options
- Silicone Optics providing 96% Clarity and Heat Resistant up to 150°C
- 8 Standard Finishes, Custom Finish and Marine Grade Finish Available
- Corrosion Resistant, Compatible with Most Control Systems and Sensors
- Environmentally Friendly Product Which Reduces Energy Consumption, L70 > 100,000 hours
- IDA qualified for 3000K CCT and Lower for Down-light Application, Reducing Light Pollution and Trespass
- Buy America(s) Option Available, Quick Mount for Easy Installation
- Cost Competitive and Short Shipping Lead Times in Days & Weeks




**LED WATTAGE CHART**

	16L	32L
350 milliamps	17w	-
530 milliamps	26w	-
700 milliamps	35w	71w
1050 milliamps	52w	104w
1050 milliamps	52w	104w

Project Name: \_\_\_\_\_ Type: \_\_\_\_\_

Cat#	Light Dist.	# of LEDs	Milliamps	Kelvin	Volts	Mounting	Color	Controls	Options
NV-W	Type 2 (T2)	16 (16L)	350 (3S)	2700K, 70 CRI (27K70)	120-277 (UNV)	Wall Mount (WM)	Bronze Textured (BRZ)	FSP-211 with Motion Sensor (FSP-211MS) 1' Pole Height and 90° Beam (FSP-211-1P-90) 1' Pole Height and 120° Beam (FSP-211-1P-120)	Marine Grade Finish (MGF)
	Type 3 (T3)	32 (32L)	530 (5S)	2700K, 80 CRI (27K80)	347-480 (HV)	Wall Mount (WM)	White Textured (WHT)	Nema 7-Pin Receptacle (P7) Photoacoustic Receptacle (PAC) Receptacle + Shorting Cap (PSC)	Vanity Field 10" SQ (VP16)
	Type 4 (T4)	48 (48L)	700 (7S)	3000K, 70 CRI (30K70)	347-480 (HV)	Wall Mount (WM)	Smooth White Glass (SWT)	Nema 7-Pin Receptacle (P7) Photoacoustic Receptacle (PAC) Receptacle + Shorting Cap (PSC)	Housing Extension (HE)
				3000K, 80 CRI (30K80)		Wall Mount (WM)	Silver (SVN)	Surge Protector (SPK)	
				3500K, 80 CRI (35K80)		Wall Mount (WM)	Black Textured (BLK)	Emergency Battery 4x 616-64 Lumens (EM4)	
				4000K, 70 CRI (40K70)		Wall Mount (WM)	Smooth Black Glass (SBK)	Emergency Battery 1x 2004-2200 Lumens (EM1)	
				5000K, 70 CRI (50K70)		Wall Mount (WM)	Graphite Textured (GPH)	Emergency Battery 1x 2004-2200 Lumens (EM1)	
				5000K, 80 CRI (50K80)		Wall Mount (WM)	Grey Textured (GRY)	Emergency Cold Pk. Battery 1x 1800-1970 Lumens (EMCP)	
				5000K, 80 CRI (50K80)		Wall Mount (WM)	Custom (CS)		

Notes:  
 1. Consult Factory for Lead Time, Consult Factory for 90 CRI Requests.  
 2. For Round Pole Specify RPA3 or RPA4.  
 3. Standard Finish is stainless steel. Can be painted to match fixture.  
 4. Universal Voltage 120-277.  
 5. 1050 or lower must be selected to meet International Dark Sky Association certification.

REV 11.16.22

TYPE W  
NTS

**NLS LIGHTING NV-2**  
AREA LIGHTING

**FORM AND FUNCTION**

- Sleek, low profile housing
- Spec grade performance
- Engineered for optimum thermal management
- Low depreciation rate
- Reduces energy consumption and costs up to 65%
- Exceeds IES foot candle levels utilizing the least number of poles and fixtures per project
- Optical system designed for:
  - Parking Lots
  - Auto Dealerships
  - General Area Lighting

**CONSTRUCTION**

- Die Cast Aluminum
- External cooling fins
- Corrosion resistant external hardware
- One-piece silicone gasket ensures IP-65 seal for electronics compartment
- One-piece Optics Plate™ mounting silicone Micro Optics
- Two-piece silicone Micro Optic system ensures IP-67 level seal around each PCB
- Grade 2 Clear Anodized Optics Plate™ standard

**FINISH**

- 3-5 mils electrostatic powder coat.
- NLS' standard high-quality finishes prevent corrosion, protects against extreme environmental conditions

**WARRANTY**

Five-year limited warranty for drivers and LEDs.




**LED WATTAGE CHART**

	80L	160L	240L	320L
700 milliamps	16w	32w	48w	64w
1050 milliamps	25w	50w	75w	100w

Project Name: \_\_\_\_\_ Type: \_\_\_\_\_

Cat#	Light Dist.	# of LEDs	Milliamps	Kelvin	Volts	Mounting	Color	Options
NV-2	Type 2 (T2)	80 (80L)	700 (7S)	2700K, 70 CRI (27K70)	120-277 (UNV)	Direct Pole 6" Arm Single, D180° (DP6)	Bronze Textured (BRZ)	Red Spikes (RS) Marine Grade Finish (MGF) Optic Plate Painted to Match Fixture (OPPF) Nema 7-Pin Receptacle (P7) Photoacoustic Receptacle (PAC) Receptacle + Shorting Cap (PSC)
	Type 3 (T3)	160 (160L)	1050 (10S)	2700K, 80 CRI (27K80)	347-480 (HV)	Direct Pole 11" Arm D90, T90, T120, Quad (DP11)	White Textured (WHT)	FSP-211 with Motion Sensor (FSP-211MS) FSP-211 with 2' Pole Height (FSP-211-2P) Quick Mount Bracket (QMB) Retrolite Mount Bracket (RMB) Round Pole Adaptor 3" - 6" Pole (RPA3) Round Pole Adaptor 3" - 6" Pole (RPA4)
	Type 4 (T4)	240 (240L)	1400 (14S)	3000K, 70 CRI (30K70)	347-480 (HV)	Knuckle Mount (KM)	Smooth White Glass (SWT)	Rotated Optic Light (ROL) Automotive House Side Shield (AHS) Black Hardware (BH)
	Type 5 (T5)	320 (320L)	1900 (19S)	3000K, 80 CRI (30K80)	347-480 (HV)	Wall Mount (WM)	Silver (SVN)	Rotated Optic Light (ROL) Automotive House Side Shield (AHS) Black Hardware (BH)
	Nema 3 30" Narrow Beam (N3)	320 (320L)	1900 (19S)	3500K, 80 CRI (35K80)	347-480 (HV)	Turnmount Mount (TM)	Black Textured (BLK)	Rotated Optic Light (ROL) Automotive House Side Shield (AHS) Black Hardware (BH)
				4000K, 70 CRI (40K70)		Tennis Arm (TA)	Smooth Black Glass (SBK)	
				4000K, 80 CRI (40K80)		Master Arm (MA)	Graphite Textured (GPH)	
				5000K, 70 CRI (50K70)			Grey Textured (GRY)	
				5000K, 80 CRI (50K80)			Custom (CS)	

Notes:  
 1. Consult Factory for Lead Time, Consult Factory for 90 CRI Requests.  
 2. For Round Pole Specify RPA3 or RPA4.  
 3. Standard Finish is stainless steel. Can be painted to match fixture.  
 4. Universal Voltage 120-277.  
 5. 1050 or lower must be selected to meet International Dark Sky Association certification.

REV 11.07.22

TYPE Z, Y, Y1  
NTS



NOTE: THE CLARITY OF THESE PLANS DEPEND UPON COLOR COPIES. IF THIS TEXT DOES NOT APPEAR IN COLOR, THIS IS NOT AN ORIGINAL PLAN SET AND MAY RESULT IN MISINTERPRETATION.

I HEREBY CERTIFY THAT THIS PLAN, SPECIFICATION OR REPORT WAS PREPARED BY ME OR UNDER MY DIRECT SUPERVISION AND THAT I AM A DULY LICENSED PROFESSIONAL ENGINEER UNDER THE LAWS OF THE STATE OF MINNESOTA.

REESE A. SUJTELGTJE

DATE 12/15/2022 LIC. NO. 54243

I HEREBY CERTIFY THAT THIS PLAN, SPECIFICATION OR REPORT WAS PREPARED BY ME OR UNDER MY DIRECT SUPERVISION AND THAT I AM A DULY LICENSED ARCHITECT UNDER THE LAWS OF THE STATE OF MINNESOTA.

MITCHELL R. WORKMON

DATE 12/15/2022 LIC. NO. 53748

THIS DOCUMENT IS THE PROPERTY OF I & S GROUP, INC. AND MAY NOT BE USED, COPIED OR DUPLICATED WITHOUT PRIOR WRITTEN CONSENT.

PROJECT

**ANOKA RAMSEY ATHLETIC ASSOCIATION NEW DOME**

RAMSEY MINNESOTA

REVISION SCHEDULE		
DATE	DESCRIPTION	BY

PROJECT NO.	22-26051
FILE NAME	26051 C6-ELEC
DRAWN BY	AJR
DESIGNED BY	AJR
REVIEWED BY	RAS
ORIGINAL ISSUE DATE	12/16/2022
CLIENT PROJECT NO.	-

TITLE

**PHOTOMETRIC DETAILS**

SHEET

**C6-20**