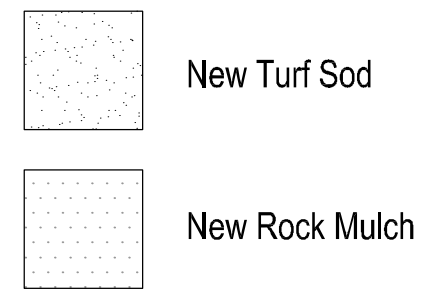


LANDSCAPE LEGEND:



MUNICIPAL LANDSCAPE CALCULATIONS:

Minimum Planting Sizes

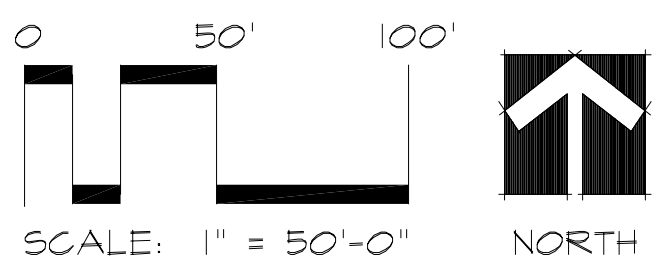
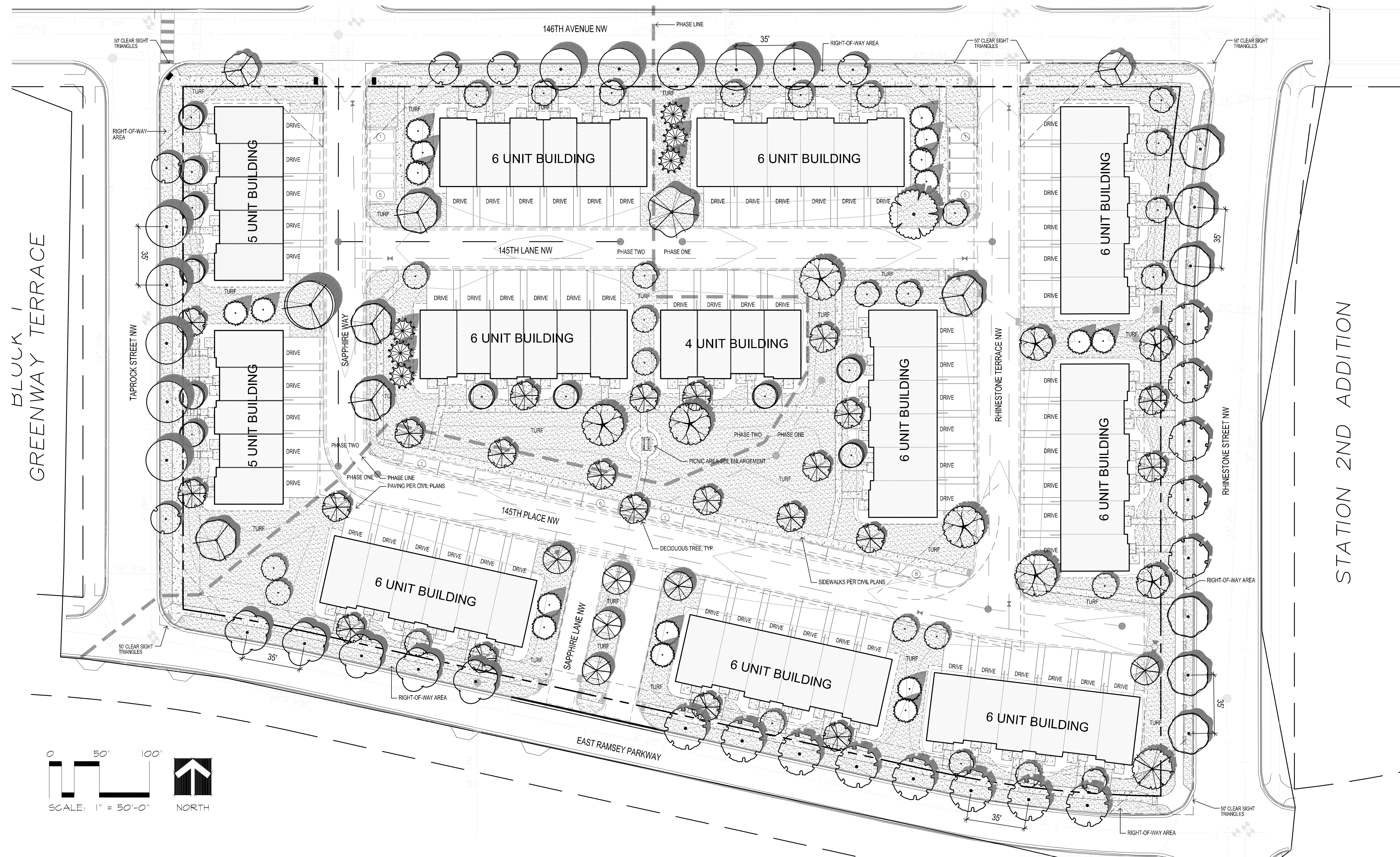
- Coniferous Trees: 5' Hgt.
- Ornamental Trees: 1.0" Cal.
- Shade/Deciduous Island Trees: 1.0" Cal.
- Shade/Deciduous Overstory Trees: 1.0" Cal.
- Deciduous Shrubs: 24"

City of Ramsey R-3 Residential Units:

One Overstory Tree Per 50 Feet of Street Frontage
 (1,650LF) Internal Roads X2 (Double-Loaded) / 50 = 66 Trees
 Development Trees Provided: 69

GENERAL NOTES:

1. Landscape contractor to provide a new irrigation layout plan for the property. See Landscape Notes.
2. See Civil Engineer's plans for grading layout and requirements
3. Contractor to coordinate any work in the right-of-way with City of Ramsey Public Works Department.
4. Sod all disturbed areas except plant beds and areas noted to receive mulch.
5. Place a minimum of 4" topsoil, with not more than 35% sand content. Topsoil inspection is required prior to installing sod and trees.
6. Refer to builder's specifications for additional requirements.
7. See Sheets L1.2 + L1.3 for Landscape Details, Notes, Schedules, and Foundation Planting Enlargements.
8. Landscape contractor is responsible for verification of soils and graded condition prior to mobilization and shall notify the General Contractor if earthwork is not acceptable. Landscape contractor is responsible for fine grading, or grade to within 1" of final set elevation.



LANDSCAPE LAYOUT PLAN:

CALYX DESIGN GROUP
 Landscape Architecture - Planning
 475 Cleveland Ave. N | Suite 101A | Saint Paul, MN 55104
 telephone: 651.788.9018
 internet: www.calyxdesigngroup.com

PRELIMINARY

PARKSIDE TOWNHOMES
 RAMSEY, MINNESOTA
LANDSCAPE LAYOUT PLAN
 FOR
COR AT RAMSEY LLC
 3313 LAKESHORE COURT, CHASKA, MN 55318

DRAWN BY	BH
DATE	01/17/2023
REVISIONS	
02/10/23	CITY COMMENTS
PROJECT NO.	22-164
	L1.1

