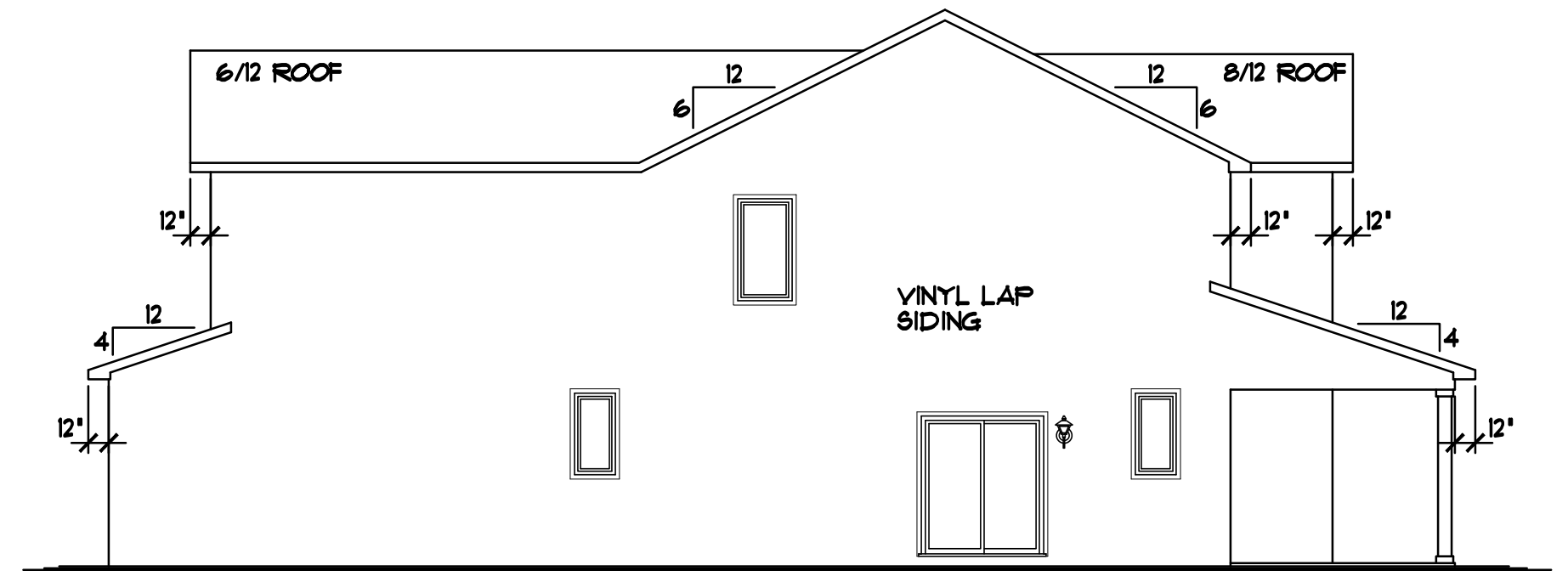


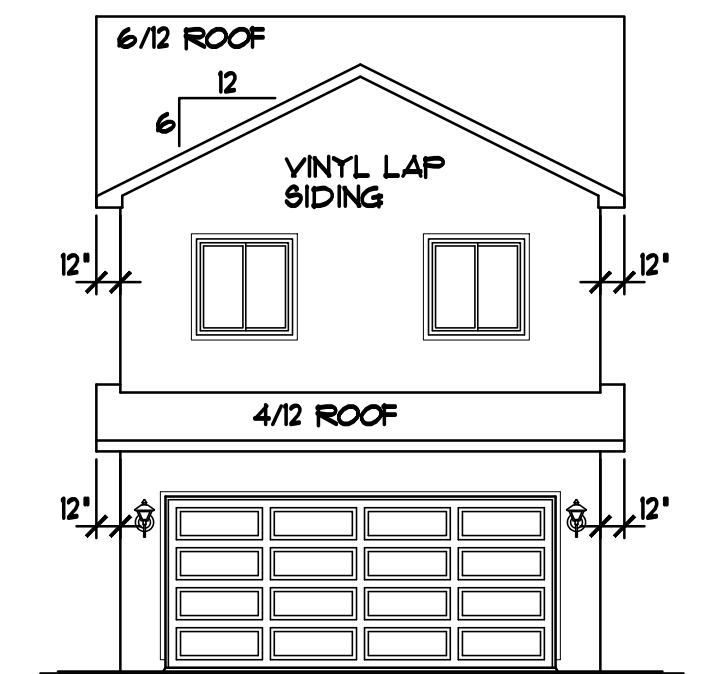
RIGHT ELEVATION 1/8"=1'-0"



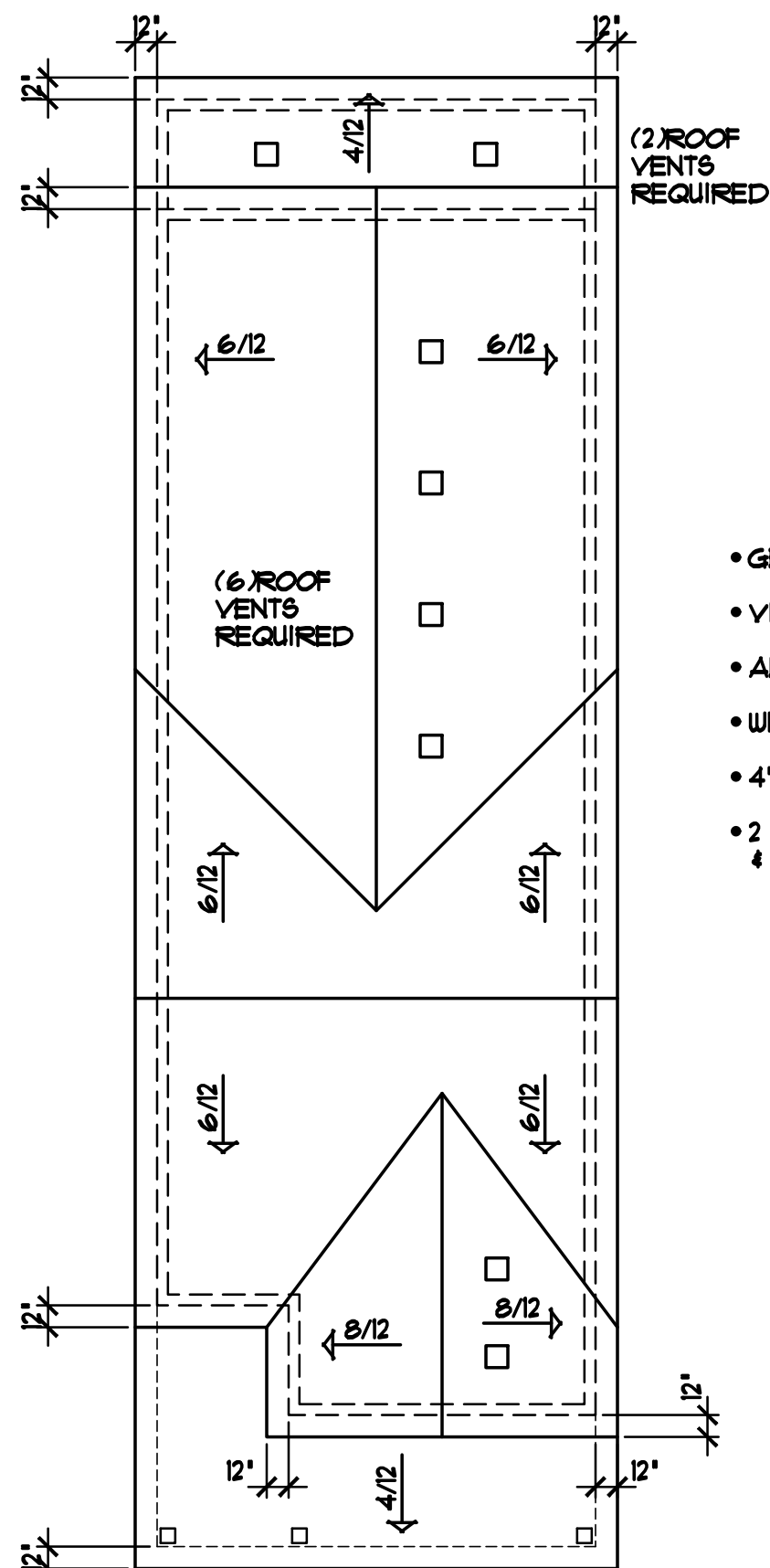
LEFT ELEVATION 1/8"=1'-0"

GENERAL FRAMING & CONSTRUCTION NOTES

- 9'-1 1/8' PLATE HEIGHT • ENTIRE FIRST FLOOR (UNLESS NOTED OTHERWISE)
- 8'-1 1/8' PLATE HEIGHT • ENTIRE SECOND FLOOR (UNLESS NOTED OTHERWISE)
- PROVIDE 12" HEEL • ALL 6/12 ROOF TRUSSES, ADJUST HEEL HEIGHT • 8/12 ROOF TO MATCH FASCIA WITH 6/12 ROOF (UNLESS NOTED OTHERWISE)
- PROVIDE STANDARD HEEL (NOT RAISED) • 4/12 ROOF TRUSSES (UNLESS NOTED OTHERWISE)

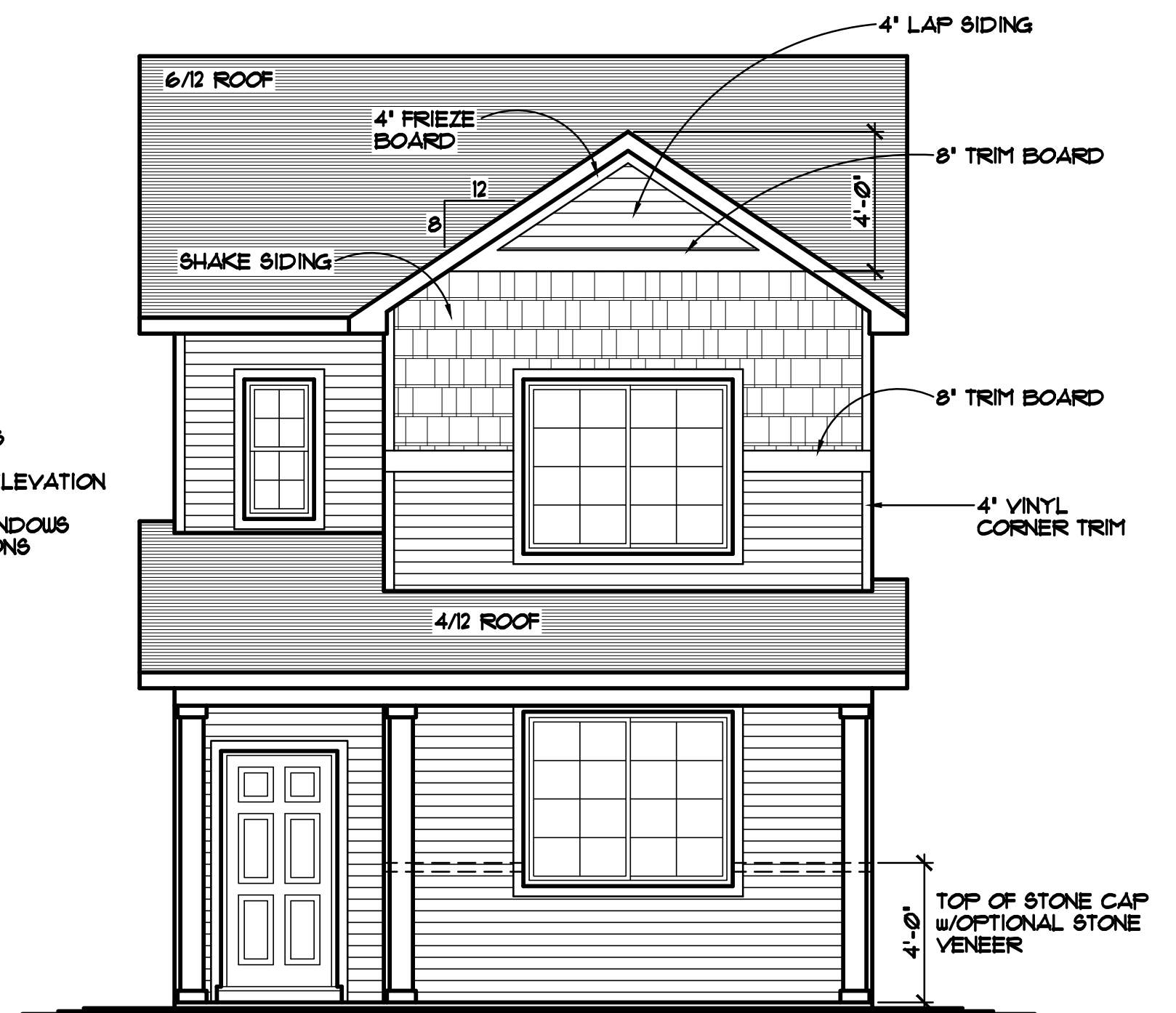


REAR ELEVATION 1/8"=1'-0"



BIRD'S-EYE ROOF PLAN 1/8"=1'-0"

- GENERIC WINDOW SIZES SPECIFIED
- VINYL SIDING/CORNER TRIM
- ALUMINUM SOFFITS & FASCIA
- WINDOWS SHOWN w/OPTIONAL GRIDS
- 4' WINDOW & DOOR TRIM • FRONT ELEVATION
- 2 1/2" VINYL J-CHANNEL AROUND WINDOWS & DOORS • REAR & SIDE ELEVATIONS



FRONT ELEVATION "A" 1/4"=1'-0"

© 2023 COPYRIGHT NOTICE, ALL RIGHTS RESERVED CROIX DESIGN and DRAFTING, INC.

REVISIONS	BY
XXXXX	XX

SPECIAL NOTICE:
CROIX DESIGN and DRAFTING, INC. ACCEPTS NO RESPONSIBILITY FOR ERRORS OR OMISSIONS. THESE DRAWINGS ARE DESIGN CONCEPT ONLY. EVERY EFFORT HAS BEEN MADE DESIGNING AND PREPARING THESE PLANS AND CHECKING THEM FOR ACCURACY. THE OWNER, GENERAL CONTRACTOR, SUB-CONTRACTORS, AND SUPPLIERS MUST CHECK ALL DETAILS AND DIMENSIONS AND BE RESPONSIBLE FOR ANY CHANGES OR ADJUSTMENTS REQUIRED DURING ACTUAL CONSTRUCTION. NO REPRESENTATION IS MADE OR IMPLIED FOR ACCURACY.

© COPY RIGHT NOTICE, ALL RIGHTS RESERVED CROIX DESIGN and DRAFTING, INC.
THESE ARCHITECTURAL PLANS AND ALL RELATED WORKS ARE PROTECTED BY UNITED STATES COPY RIGHT LAWS, AND MAY NOT BE REPRODUCED, DISTRIBUTED OR OTHERWISE USED IN ANY MANNER WITHOUT THE EXPRESS WRITTEN PERMISSION OF CROIX DESIGN and DRAFTING, INC.

DESIGN and DRAFTING BY:



- ARCHITECTURAL DESIGN and DRAFTING SERVICE •
- HOME PALN SERVICE • CUSTOM HOMES • REMODELING •
- PHONE: 763.757.5997 • ANDOVER, MINNESOTA •
- WWW.CROIXDESIGN.COM •

BUILT BY:

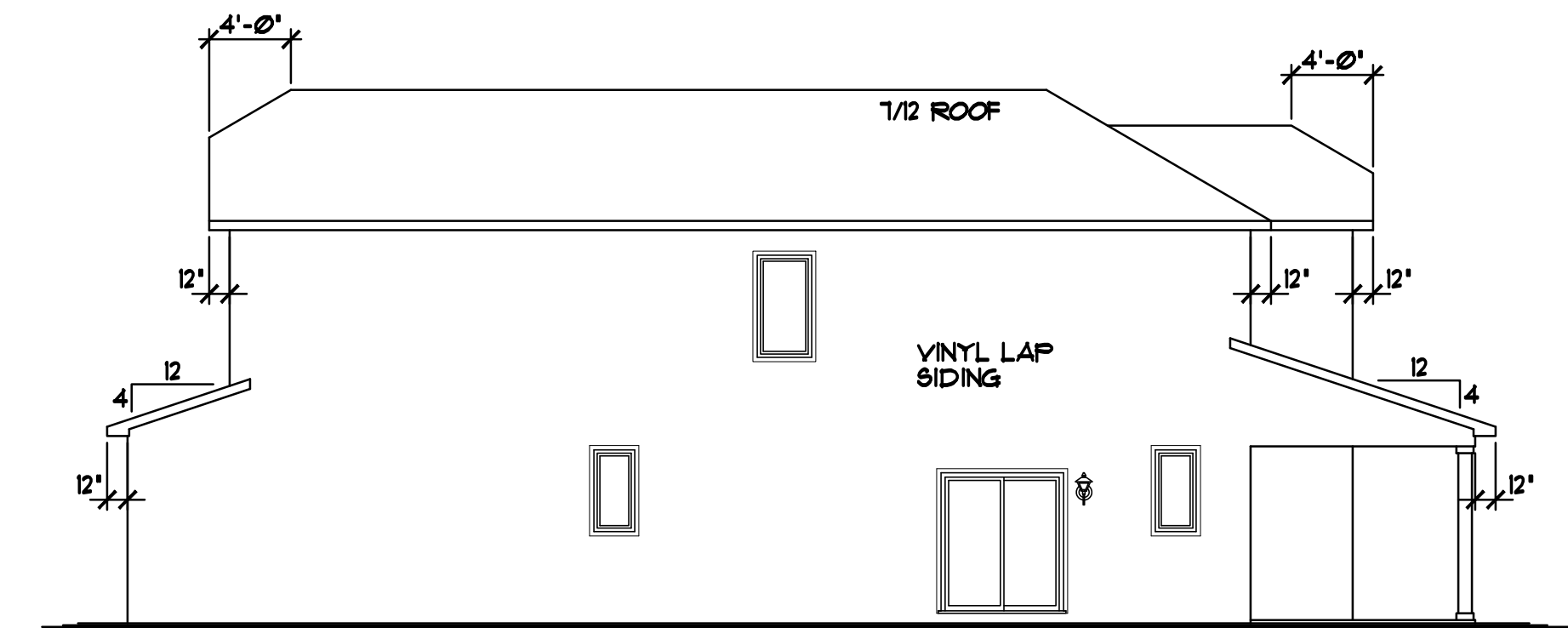
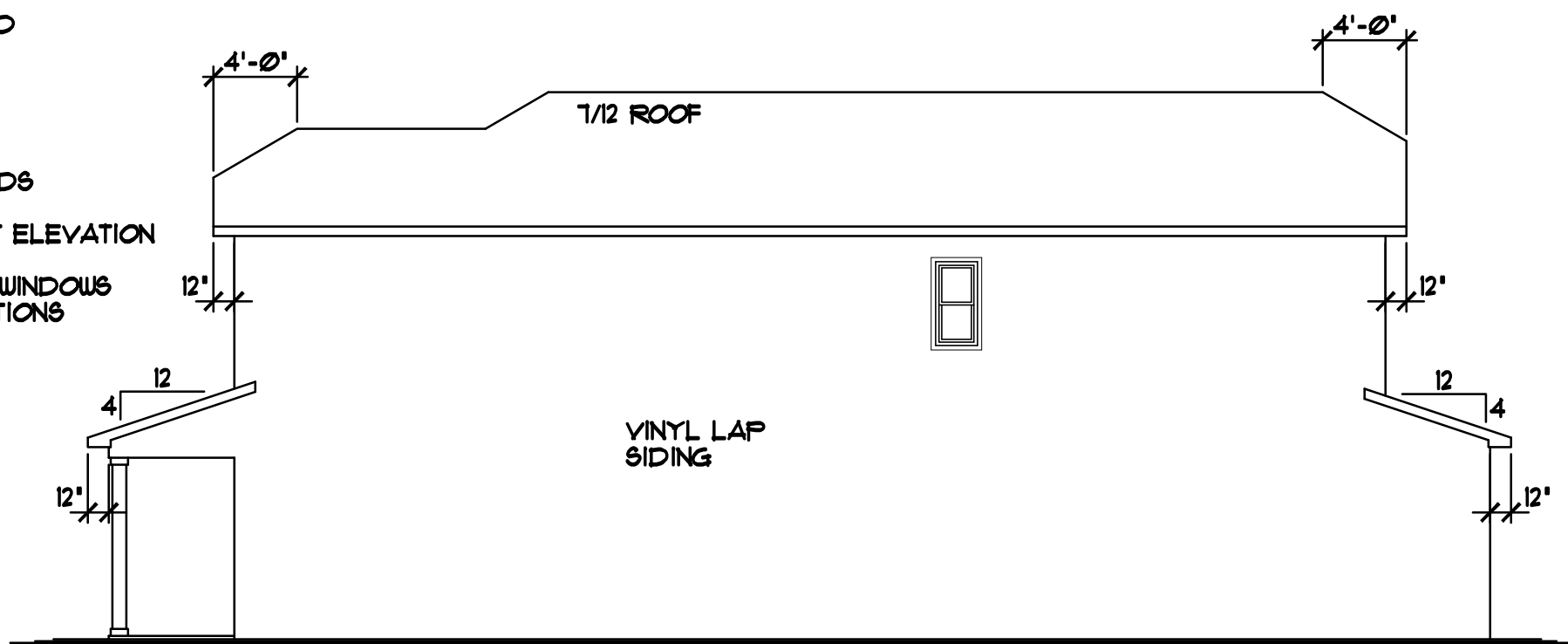
CENTRA HOMES LLC

THE ELMCREST

131 SQ. FT. FIRST FLOOR
1010 SQ. FT. SECOND FLOOR
1201 SQ. FT. TOTAL

DRAWN N.F.	CHECKED
DATE: 9/26/2023 <td>SCALE: AS NOTED </td>	SCALE: AS NOTED
CADD FILE # 23194	
SHEET 1 OF 6	

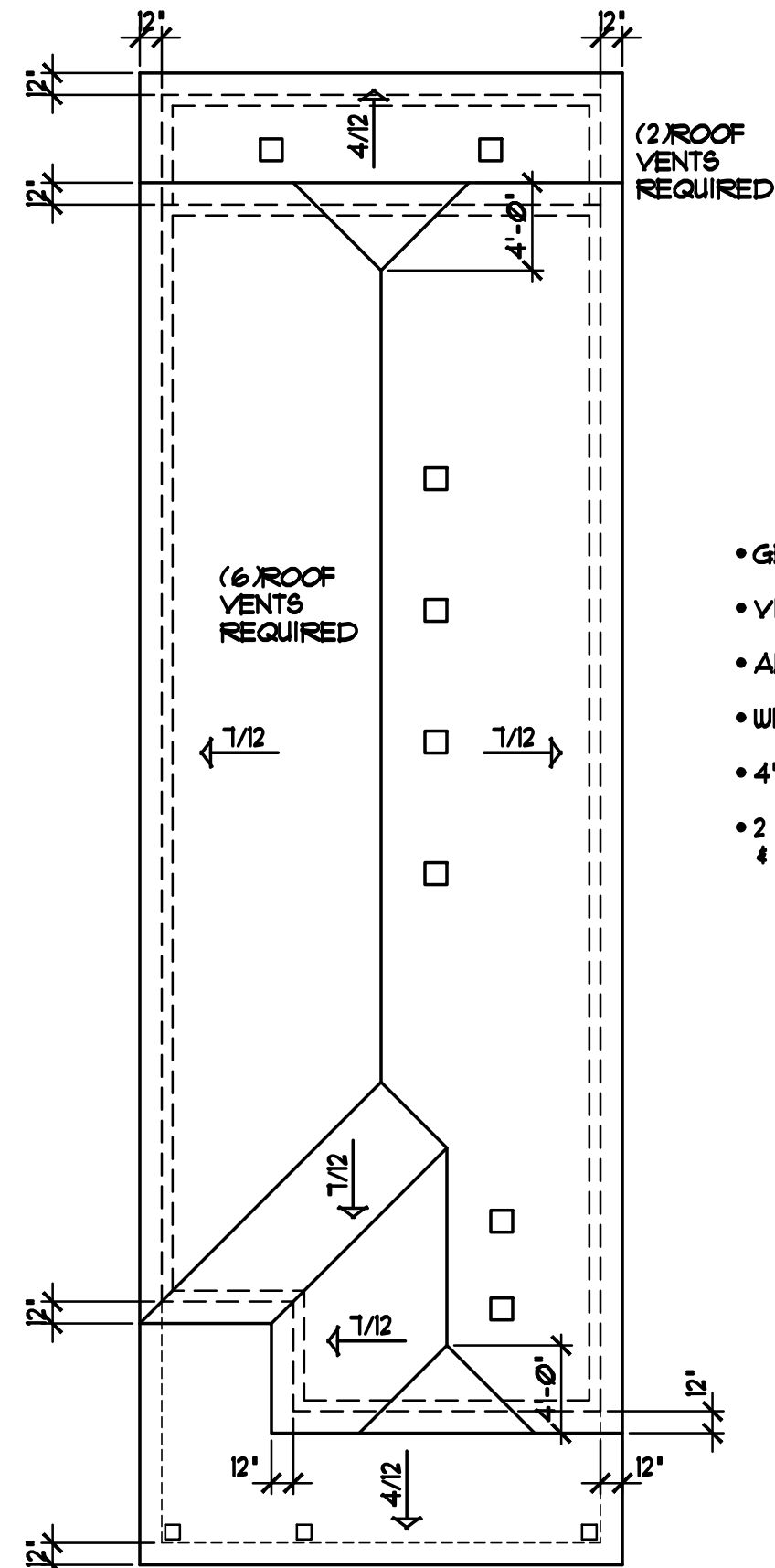
- GENERIC WINDOW SIZES SPECIFIED
- VINYL SIDING/CORNER TRIM
- ALUMINUM SOFFITS & FASCIA
- WINDOWS SHOWN w/OPTIONAL GRIDS
- 4' WINDOW & DOOR TRIM • FRONT ELEVATION
- 2 1/2" VINYL J-CHANNEL AROUND WINDOWS & DOORS • REAR & SIDE ELEVATIONS



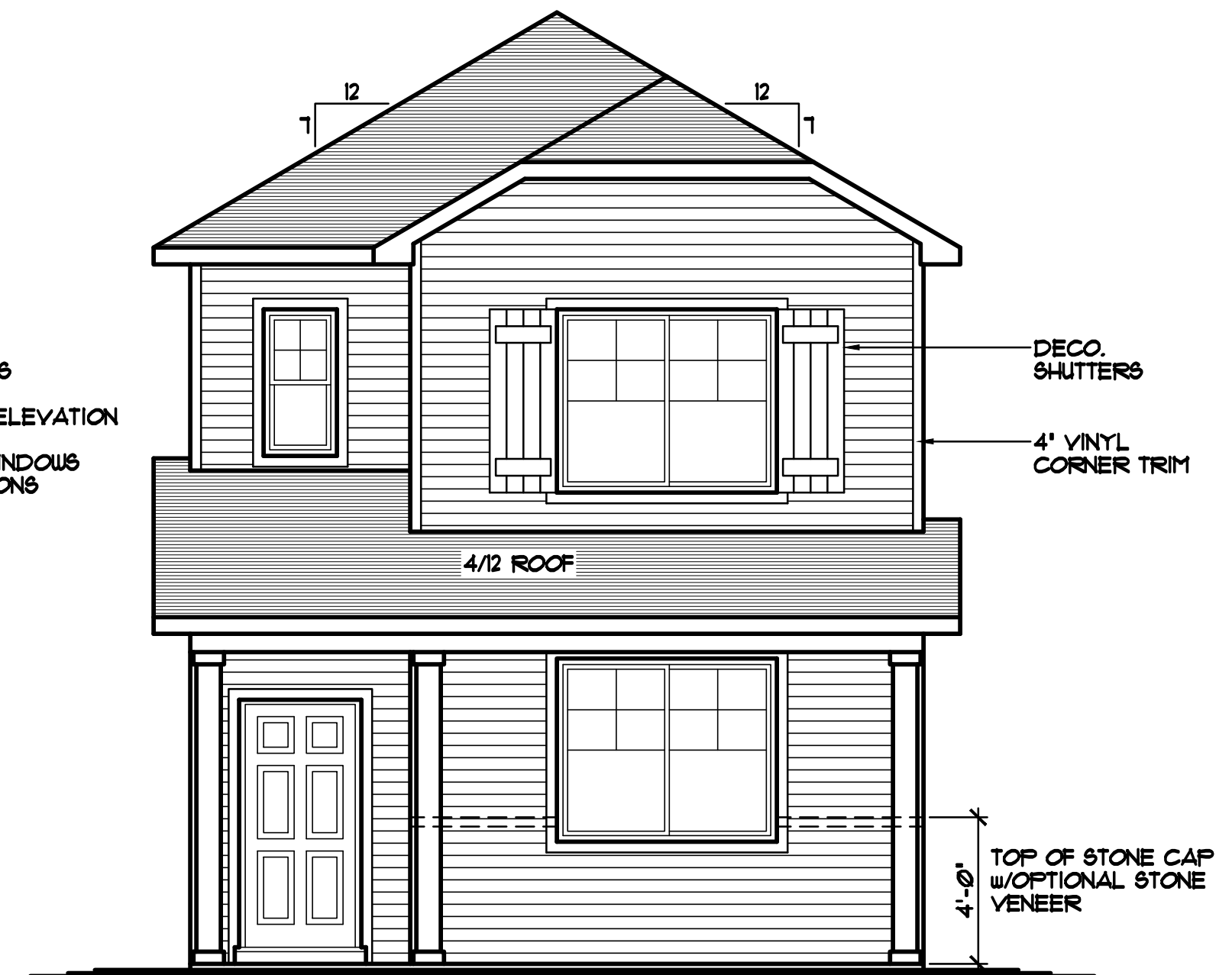
GENERAL FRAMING & CONSTRUCTION NOTES

- 9'-1 1/8" PLATE HEIGHT • ENTIRE FIRST FLOOR (UNLESS NOTED OTHERWISE)
- 8'-1 1/8" PLATE HEIGHT • ENTIRE SECOND FLOOR (UNLESS NOTED OTHERWISE)
- PROVIDE 12" HEEL • ALL 7/12 ROOF TRUSSES (UNLESS NOTED OTHERWISE)
- PROVIDE STANDARD HEEL (NOT RAISED) • 4/12 ROOF TRUSSES (UNLESS NOTED OTHERWISE)

RIGHT ELEVATION 1/8"=1'-0"



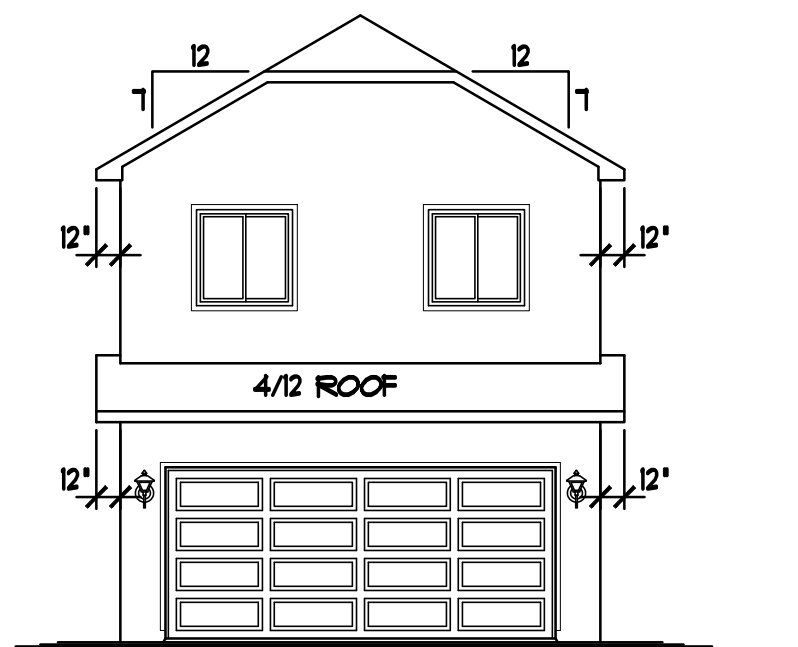
LEFT ELEVATION 1/8"=1'-0"



FRONT ELEVATION "B" 1/4"=1'-0"

- GENERIC WINDOW SIZES SPECIFIED
- VINYL SIDING/CORNER TRIM
- ALUMINUM SOFFITS & FASCIA
- WINDOWS SHOWN w/OPTIONAL GRIDS
- 4' WINDOW & DOOR TRIM • FRONT ELEVATION
- 2 1/2" VINYL J-CHANNEL AROUND WINDOWS & DOORS • REAR & SIDE ELEVATIONS

BIRD'S-EYE ROOF PLAN 1/8"=1'-0"



REAR ELEVATION 1/8"=1'-0"

© 2023 COPYRIGHT NOTICE, ALL RIGHTS RESERVED CROIX DESIGN and DRAFTING, INC.

REVISIONS	BY
XXXXX	XX

SPECIAL NOTICE:
CROIX DESIGN and DRAFTING, INC. ACCEPTS NO RESPONSIBILITY FOR ERRORS OR OMISSIONS. THESE DRAWINGS ARE DESIGN CONCEPT ONLY. EVERY EFFORT HAS BEEN MADE DESIGNING AND PREPARING THESE PLANS AND CHECKING THEM FOR ACCURACY. THE OWNER, GENERAL CONTRACTOR, SUB-CONTRACTORS, AND SUPPLIERS MUST CHECK ALL DETAILS AND DIMENSIONS AND BE RESPONSIBLE FOR ANY CHANGES OR ADJUSTMENTS REQUIRED DURING ACTUAL CONSTRUCTION. NO REPRESENTATION IS MADE OR IMPLIED FOR ACCURACY.

© COPY RIGHT NOTICE, ALL RIGHTS RESERVED CROIX DESIGN and DRAFTING, INC.
THESE ARCHITECTURAL PLANS AND ALL RELATED WORKS ARE PROTECTED BY UNITED STATES COPY RIGHT LAWS, AND MAY NOT BE REPRODUCED, DISTRIBUTED OR OTHERWISE USED IN ANY MANNER WITHOUT THE EXPRESS WRITTEN PERMISSION OF CROIX DESIGN and DRAFTING, INC.

DESIGN and DRAFTING BY:



- ARCHITECTURAL DESIGN and DRAFTING SERVICE •
- HOME PALN SERVICE • CUSTOM HOMES • REMODELING •
- PHONE: 763.757.5997 • ANDOVER, MINNESOTA •
- WWW.CROIXDESIGN.COM •

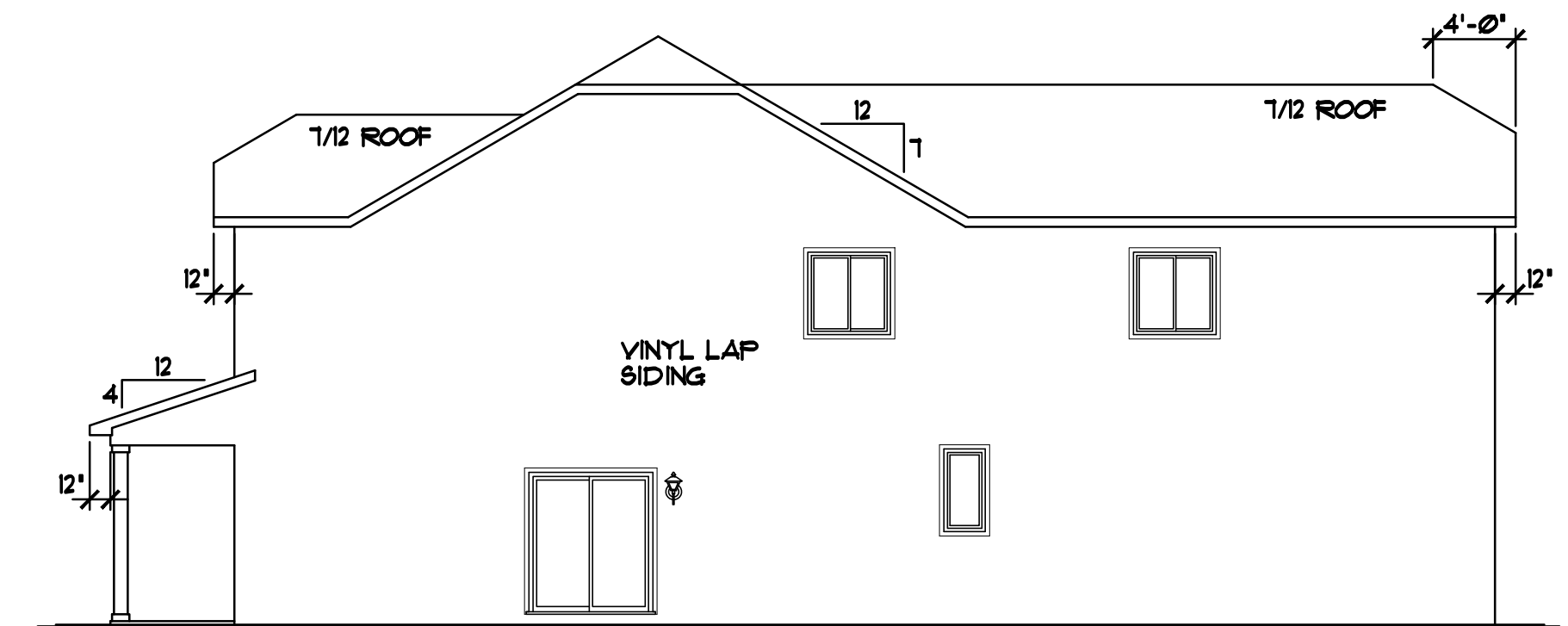
BUILT BY:

CENTRA HOMES LLC

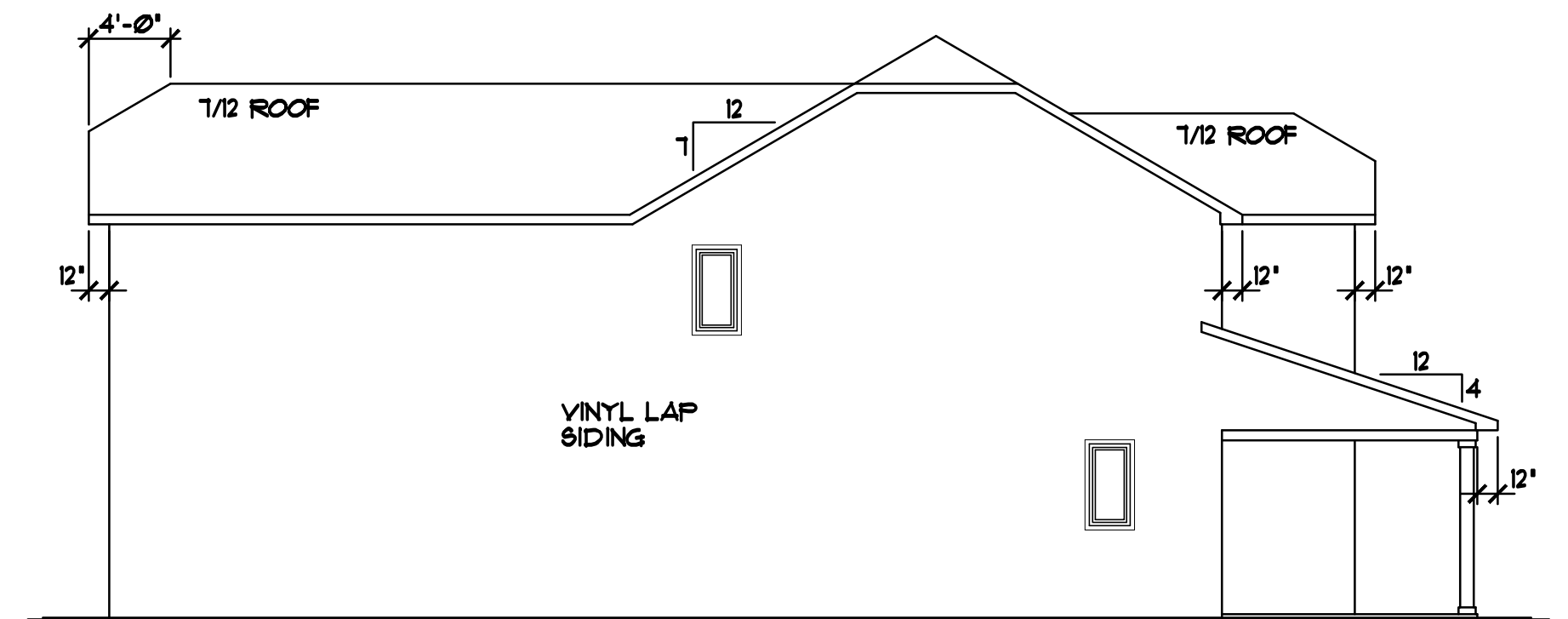
THE ELMCREST

131 SQ. FT. FIRST FLOOR
1010 SQ. FT. SECOND FLOOR
1201 SQ. FT. TOTAL

DRAWN N.F.	CHECKED --
DATE: 9/26/2023	SCALE: AS NOTED
CADD FILE # 23194	
SHEET 1 OF 6	



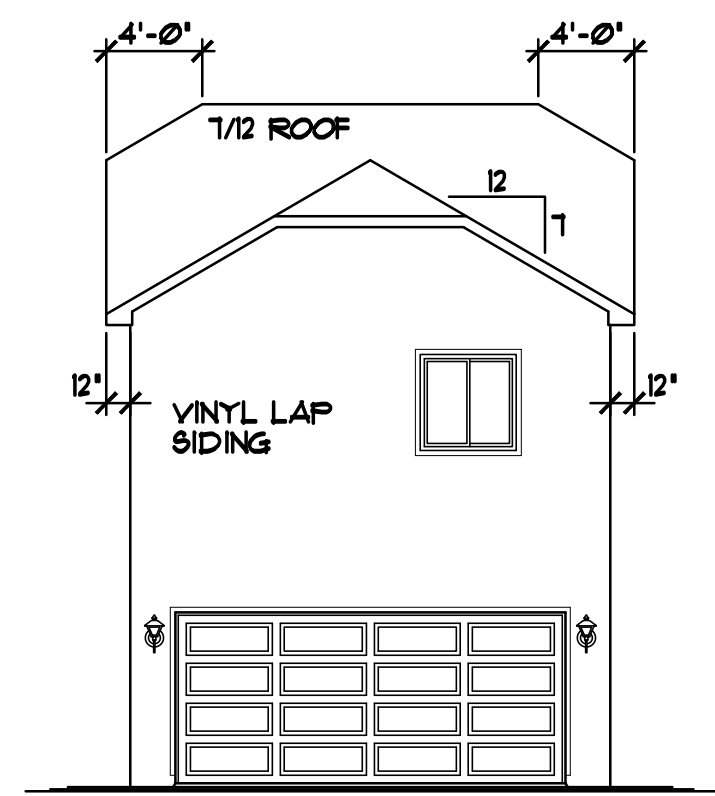
RIGHT ELEVATION 1/8"=1'-0"



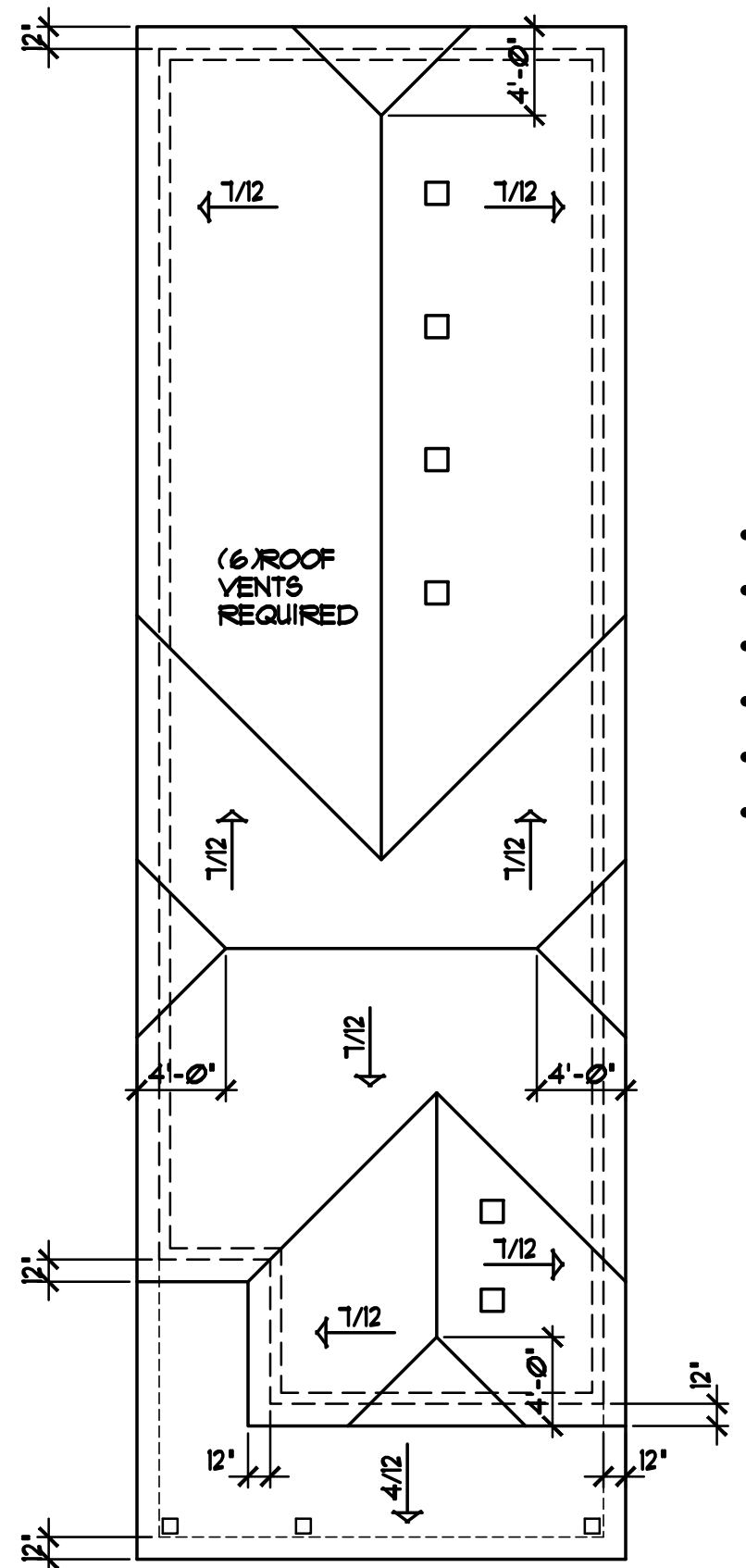
LEFT ELEVATION 1/8"=1'-0"

GENERAL FRAMING & CONSTRUCTION NOTES

- 9'-1 1/8' PLATE HEIGHT • ENTIRE FIRST FLOOR (UNLESS NOTED OTHERWISE)
- 8'-1 1/8' PLATE HEIGHT • ENTIRE SECOND FLOOR (UNLESS NOTED OTHERWISE)
- PROVIDE 12" HEEL • ALL 7/12 ROOF TRUSSES (UNLESS NOTED OTHERWISE)
- PROVIDE STANDARD HEEL (NOT RAISED) • 4/12 ROOF TRUSSES (UNLESS NOTED OTHERWISE)

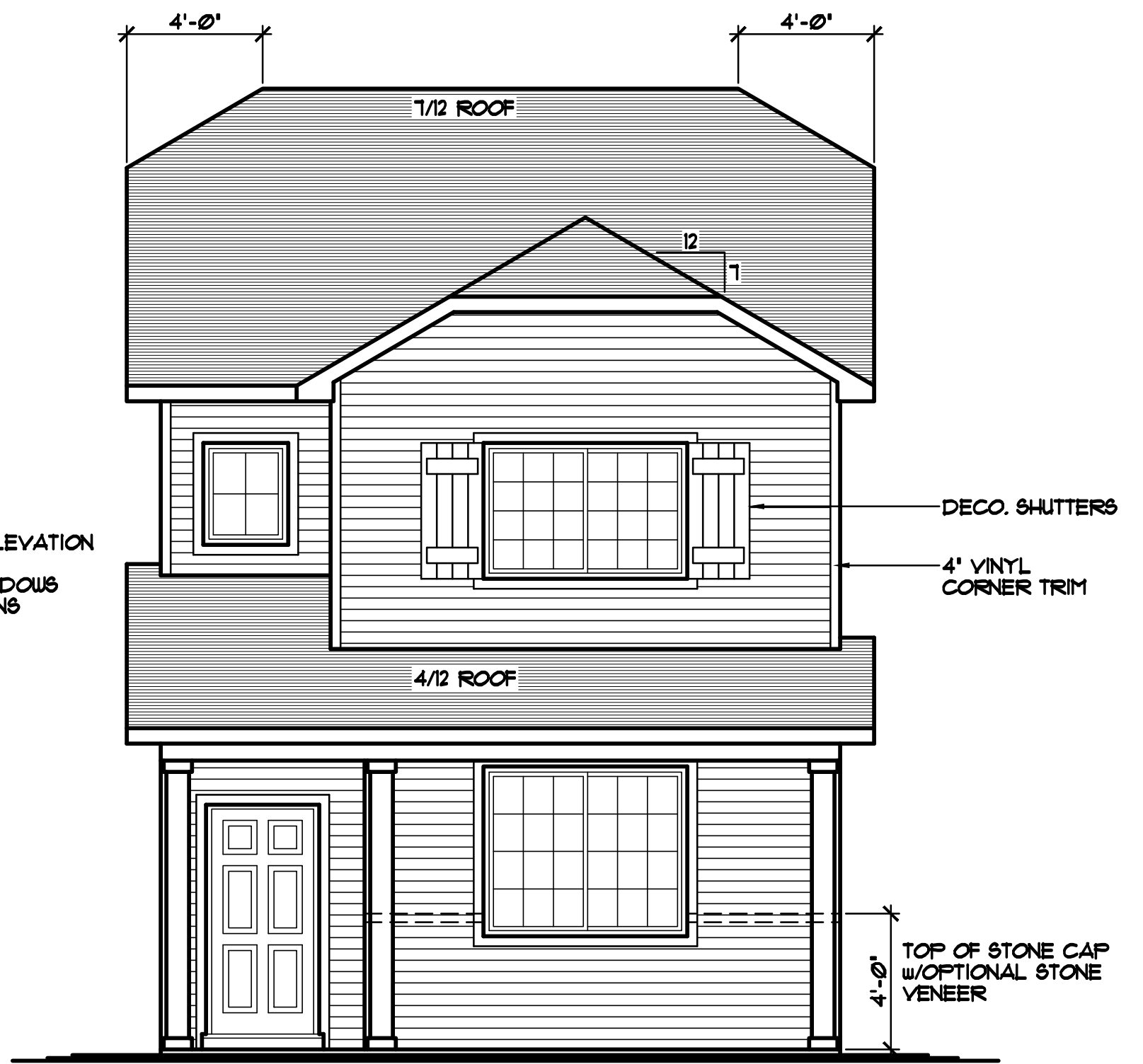


REAR ELEVATION 1/8"=1'-0"



BIRD'S-EYE ROOF PLAN 1/8"=1'-0"

- GENERIC WINDOW SIZES SPECIFIED
- VINYL SIDING/CORNER TRIM
- ALUMINUM SOFFITS & FASCIA
- WINDOWS SHOWN w/OPTIONAL GRIDS
- 4' WINDOW & DOOR TRIM • FRONT ELEVATION
- 2 1/2" VINYL J-CHANNEL AROUND WINDOWS & DOORS • REAR & SIDE ELEVATIONS



FRONT ELEVATION "A" 1/4"=1'-0"

© 2023 COPYRIGHT NOTICE, ALL RIGHTS RESERVED CROIX DESIGN and DRAFTING, INC.

REVISIONS	BY
XXXXX	XX

SPECIAL NOTICE:
CROIX DESIGN and DRAFTING, INC. ACCEPTS NO RESPONSIBILITY FOR ERRORS OR OMISSIONS. THESE DRAWINGS ARE DESIGN CONCEPT ONLY. EVERY EFFORT HAS BEEN MADE DESIGNING AND PREPARING THESE PLANS AND CHECKING THEM FOR ACCURACY. THE OWNER, GENERAL CONTRACTOR, SUB-CONTRACTORS, AND SUPPLIERS MUST CHECK ALL DETAILS AND DIMENSIONS AND BE RESPONSIBLE FOR ANY CHANGES OR ADJUSTMENTS REQUIRED DURING ACTUAL CONSTRUCTION. NO REPRESENTATION IS MADE OR IMPLIED FOR ACCURACY.

© COPY RIGHT NOTICE, ALL RIGHTS RESERVED CROIX DESIGN and DRAFTING, INC.
THESE ARCHITECTURAL PLANS AND ALL RELATED WORKS ARE PROTECTED BY UNITED STATES COPY RIGHT LAWS, AND MAY NOT BE REPRODUCED, DISTRIBUTED OR OTHERWISE USED IN ANY MANNER WITHOUT THE EXPRESS WRITTEN PERMISSION OF CROIX DESIGN and DRAFTING, INC.

DESIGN and DRAFTING BY:

• ARCHITECTURAL DESIGN and DRAFTING SERVICE •
• HOME PALN SERVICE • CUSTOM HOMES • REMODELING •
• PHONE: 763.757.5997 • ANDOVER, MINNESOTA •
• WWW.CROIXDESIGN.COM •

BUILT BY:

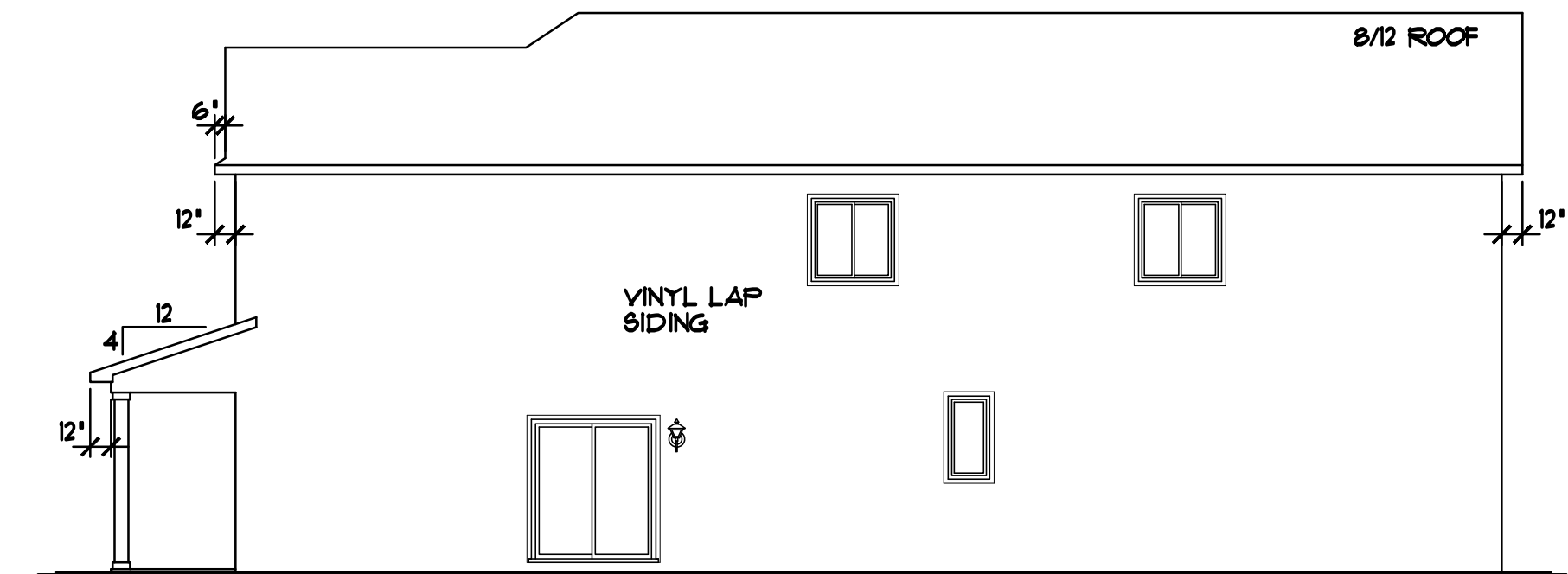
CENTRA HOMES LLC

THE TERRACE

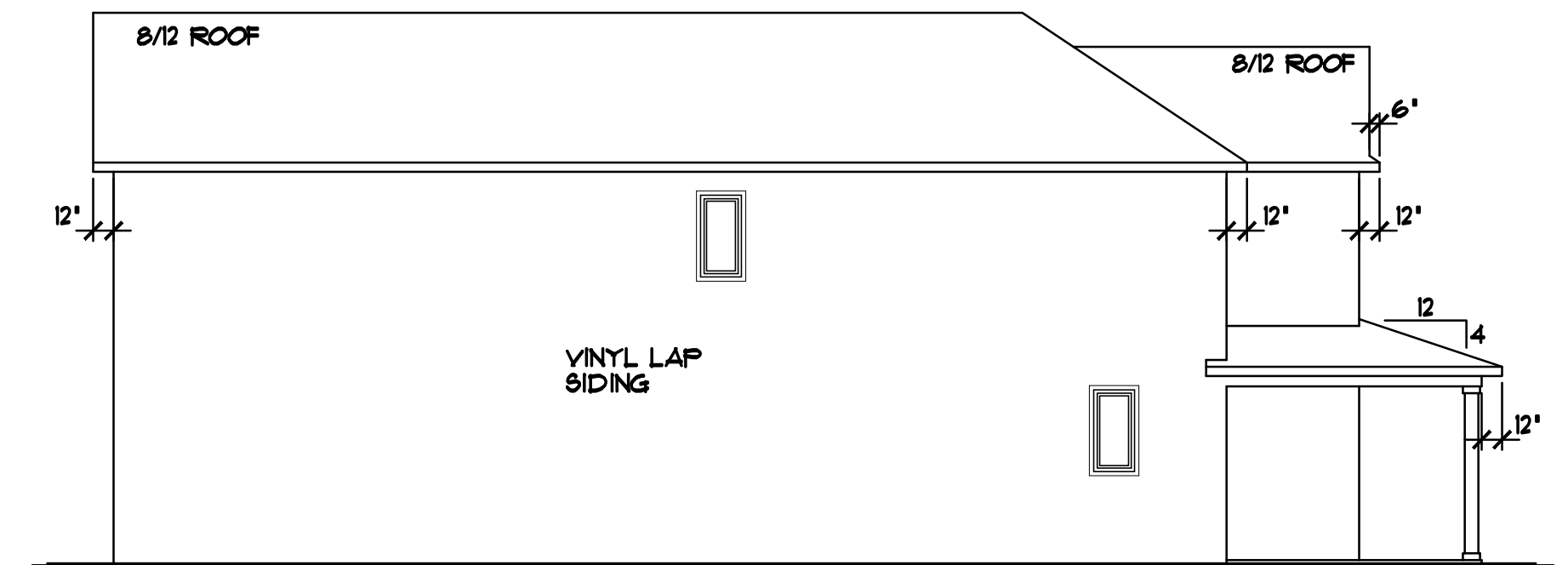
711 SQ. FT. FIRST FLOOR
1033 SQ. FT. SECOND FLOOR
1010 SQ. FT. TOTAL

89 SQ. FT. STAIRS/OPEN AREA (NOT INCLUDED)

DRAWN N.F.	CHECKED
	--
DATE	SCALE
10/03/2023	AS NOTED
CADD FILE #	
23204	
SHEET	
1 OF 6	



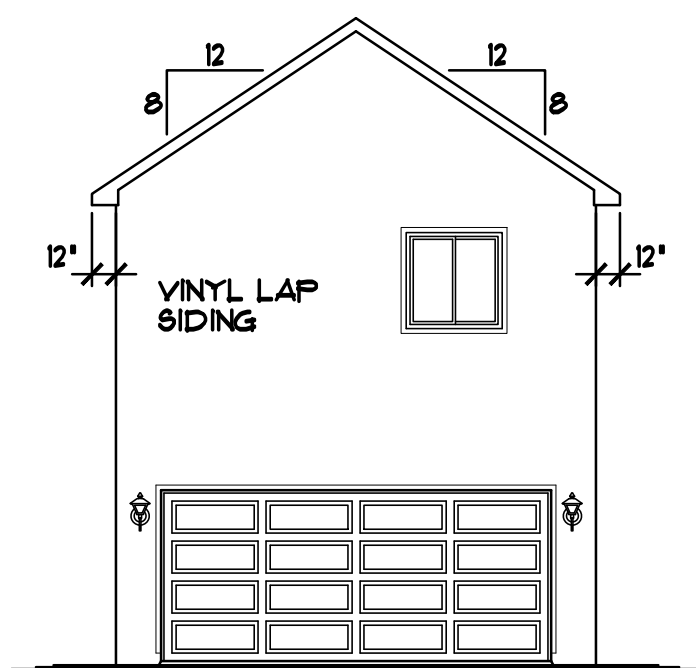
RIGHT ELEVATION 1/8"=1'-0"



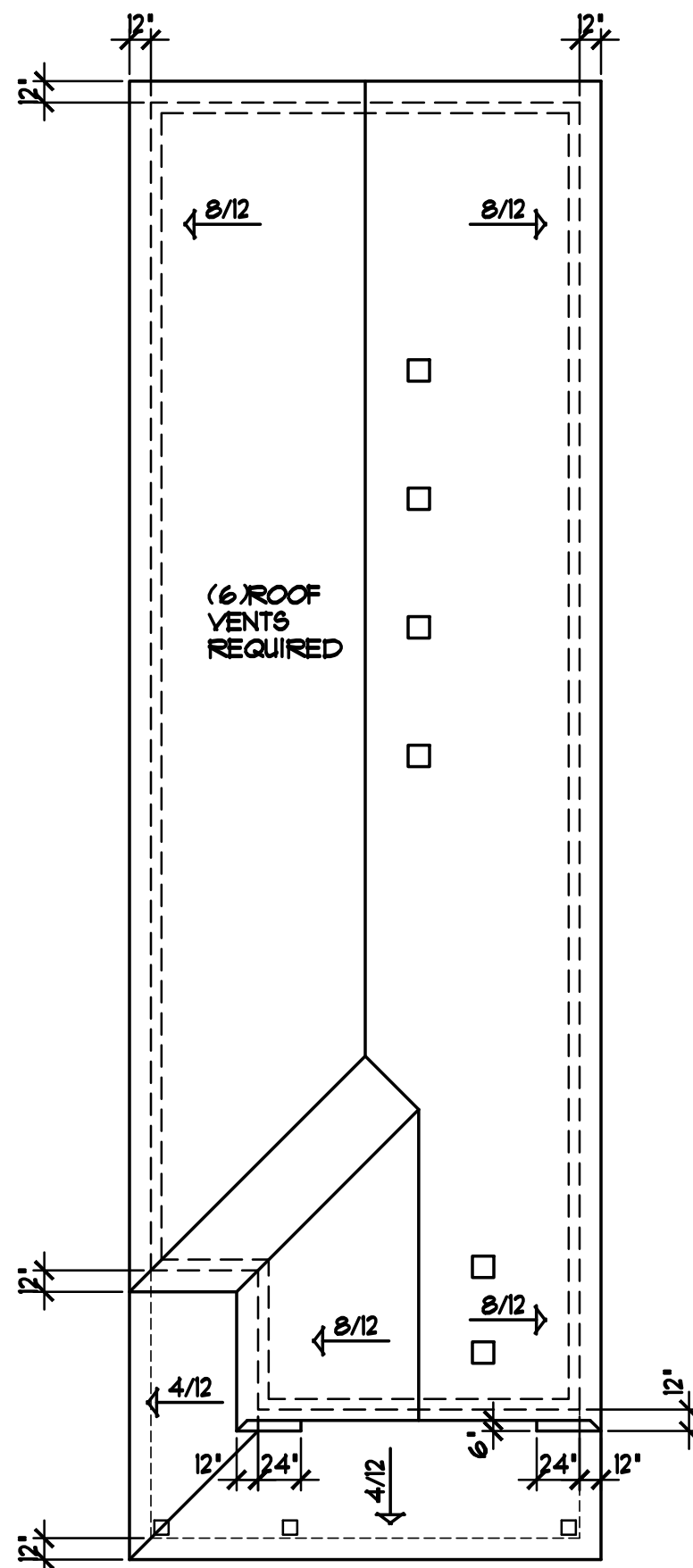
LEFT ELEVATION 1/8"=1'-0"

GENERAL FRAMING & CONSTRUCTION NOTES

- 9'-1 1/8' PLATE HEIGHT • ENTIRE FIRST FLOOR (UNLESS NOTED OTHERWISE)
- 8'-1 1/8' PLATE HEIGHT • ENTIRE SECOND FLOOR (UNLESS NOTED OTHERWISE)
- PROVIDE 12" HEEL • ALL 8/12 ROOF TRUSSES (UNLESS NOTED OTHERWISE)
- PROVIDE STANDARD HEEL (NOT RAISED) • 4/12 ROOF TRUSSES (UNLESS NOTED OTHERWISE)

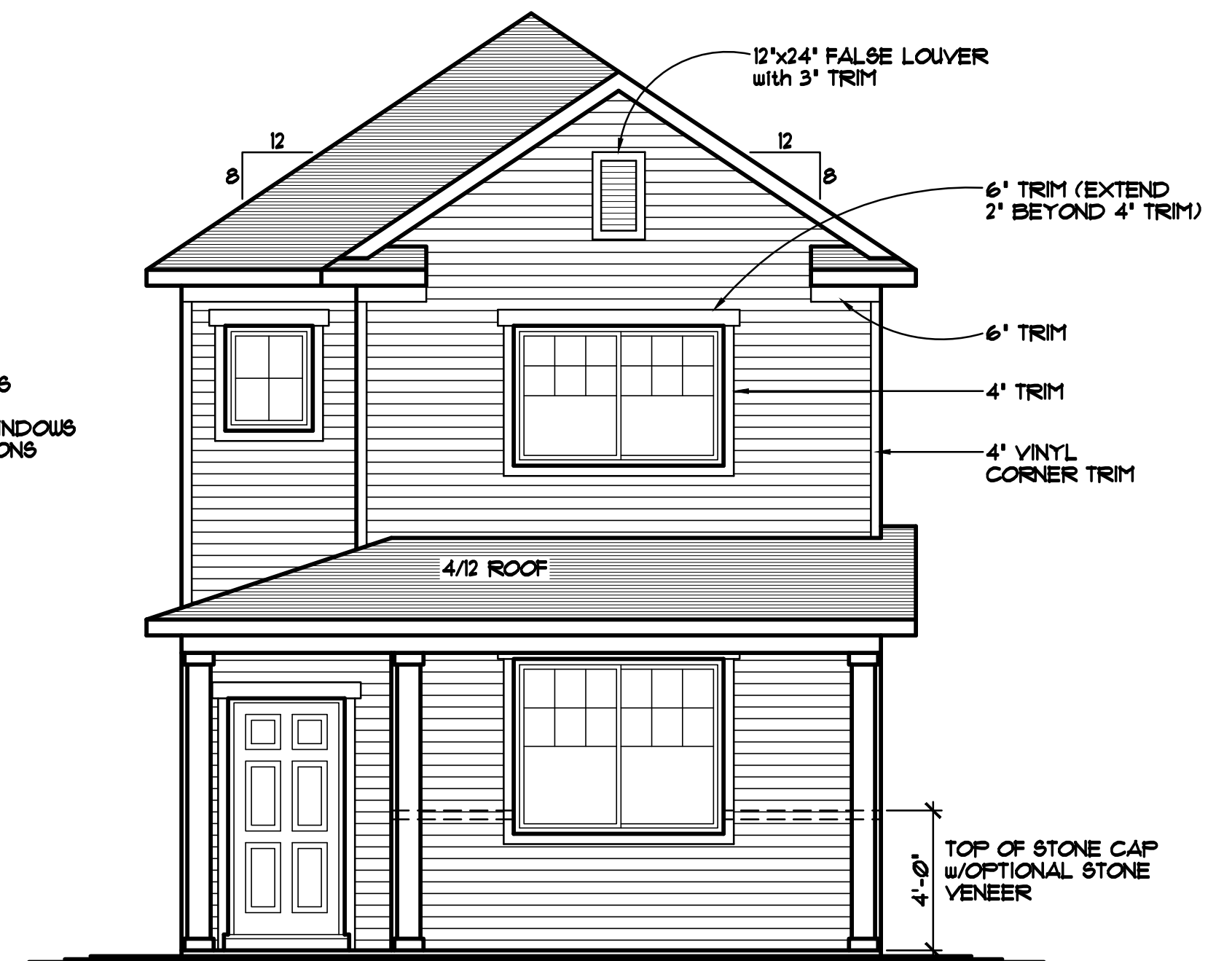


REAR ELEVATION 1/8"=1'-0"



BIRD'S-EYE ROOF PLAN 1/8"=1'-0"

- GENERIC WINDOW SIZES SPECIFIED
- VINYL SIDING/CORNER TRIM
- ALUMINUM SOFFITS & FASCIA
- WINDOWS SHOWN w/OPTIONAL GRIDS
- 2 1/2" VINYL J-CHANNEL AROUND WINDOWS & DOORS • REAR & SIDE ELEVATIONS



FRONT ELEVATION "B" 1/4"=1'-0"

© 2023 COPYRIGHT NOTICE, ALL RIGHTS RESERVED
CROIX DESIGN and DRAFTING, INC.

REVISIONS	BY
XXXXX	XX

SPECIAL NOTICE:
CROIX DESIGN and DRAFTING, INC. ACCEPTS NO RESPONSIBILITY FOR ERRORS OR OMISSIONS. THESE DRAWINGS ARE DESIGN CONCEPT ONLY. EVERY EFFORT HAS BEEN MADE DESIGNING AND PREPARING THESE PLANS AND CHECKING THEM FOR ACCURACY. THE OWNER, GENERAL CONTRACTOR, SUB-CONTRACTORS, AND SUPPLIERS MUST CHECK ALL DETAILS AND DIMENSIONS AND BE RESPONSIBLE FOR ANY CHANGES OR ADJUSTMENTS REQUIRED DURING ACTUAL CONSTRUCTION. NO REPRESENTATION IS MADE OR IMPLIED FOR ACCURACY.

© COPY RIGHT NOTICE, ALL RIGHTS RESERVED
CROIX DESIGN and DRAFTING, INC.
THESE ARCHITECTURAL PLANS AND ALL RELATED WORKS ARE PROTECTED BY UNITED STATES COPY RIGHT LAWS, AND MAY NOT BE REPRODUCED, DISTRIBUTED OR OTHERWISE USED IN ANY MANNER WITHOUT THE EXPRESS WRITTEN PERMISSION OF CROIX DESIGN and DRAFTING, INC.

DESIGN and DRAFTING BY:



- ARCHITECTURAL DESIGN and DRAFTING SERVICE •
- HOME PALN SERVICE • CUSTOM HOMES • REMODELING •
- PHONE: 763.757.5997 • ANDOVER, MINNESOTA •
- WWW.CROIXDESIGN.COM •

BUILT BY:

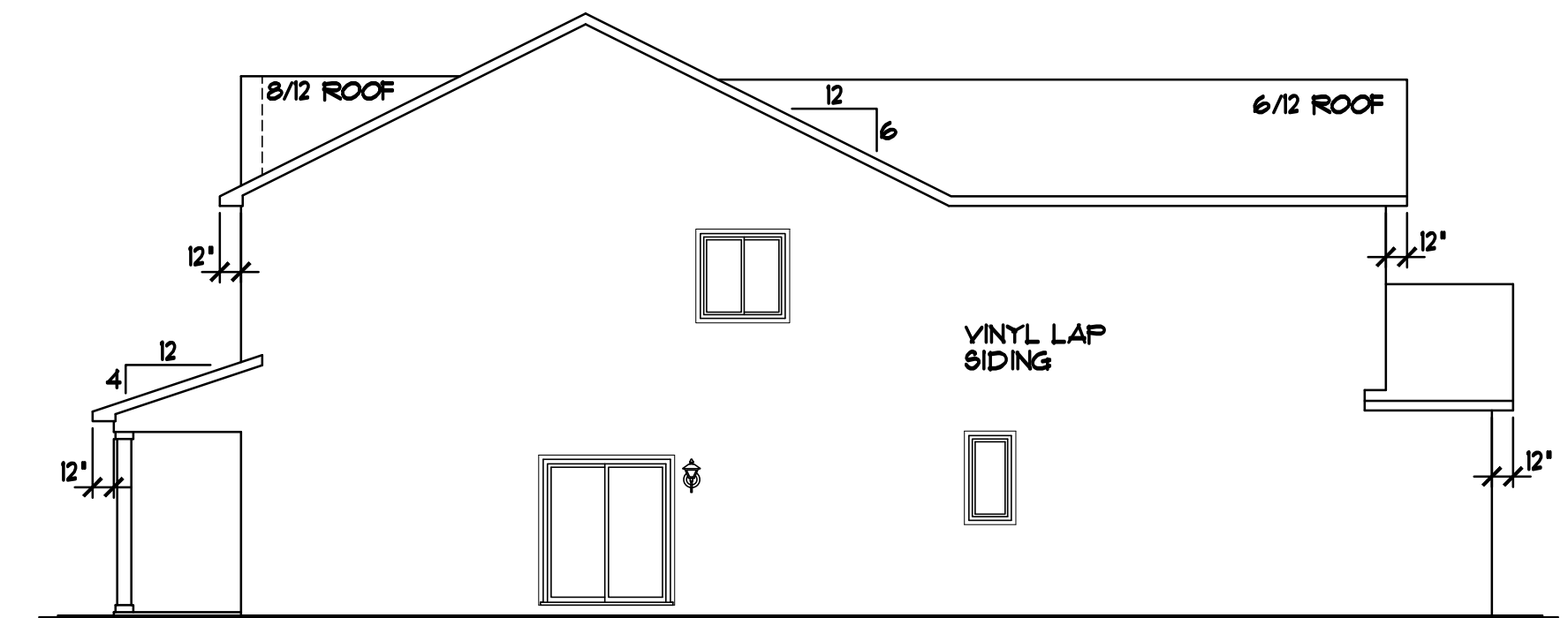
CENTRA HOMES LLC

THE TERRACE

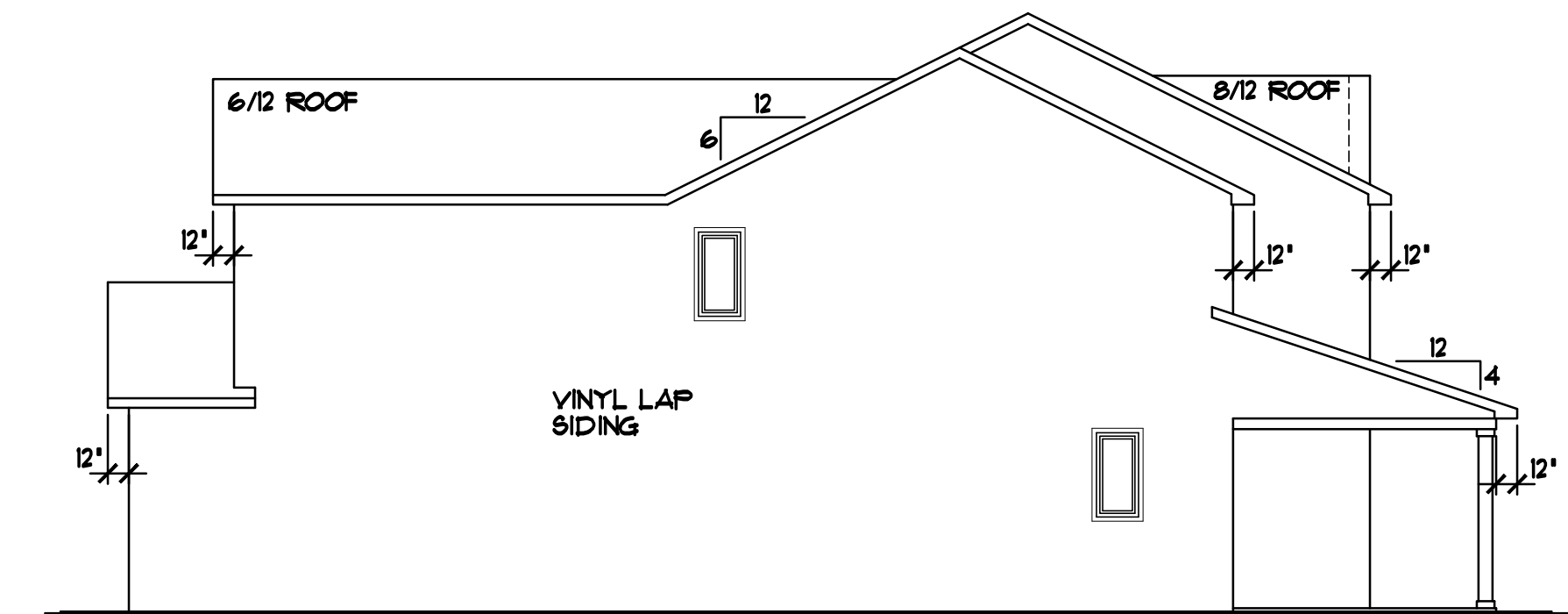
711 SQ. FT. FIRST FLOOR
1233 SQ. FT. SECOND FLOOR
1810 SQ. FT. TOTAL

89 SQ. FT. STAIRS/OPEN AREA (NOT INCLUDED)

DRAWN N.F.	CHECKED
	--
DATE	SCALE
10/03/2023	AS NOTED
CADD FILE #	
23204	
SHEET	
1 OF 6	



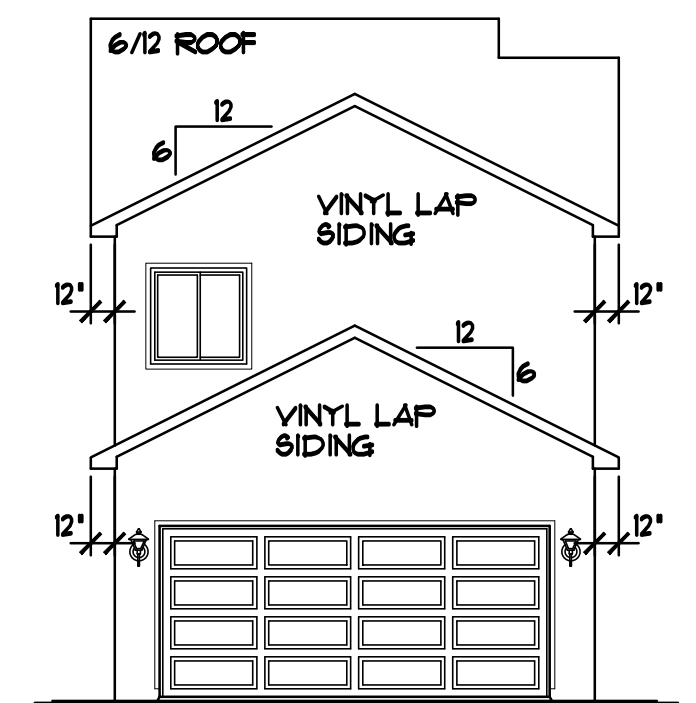
RIGHT ELEVATION 1/8"=1'-0"



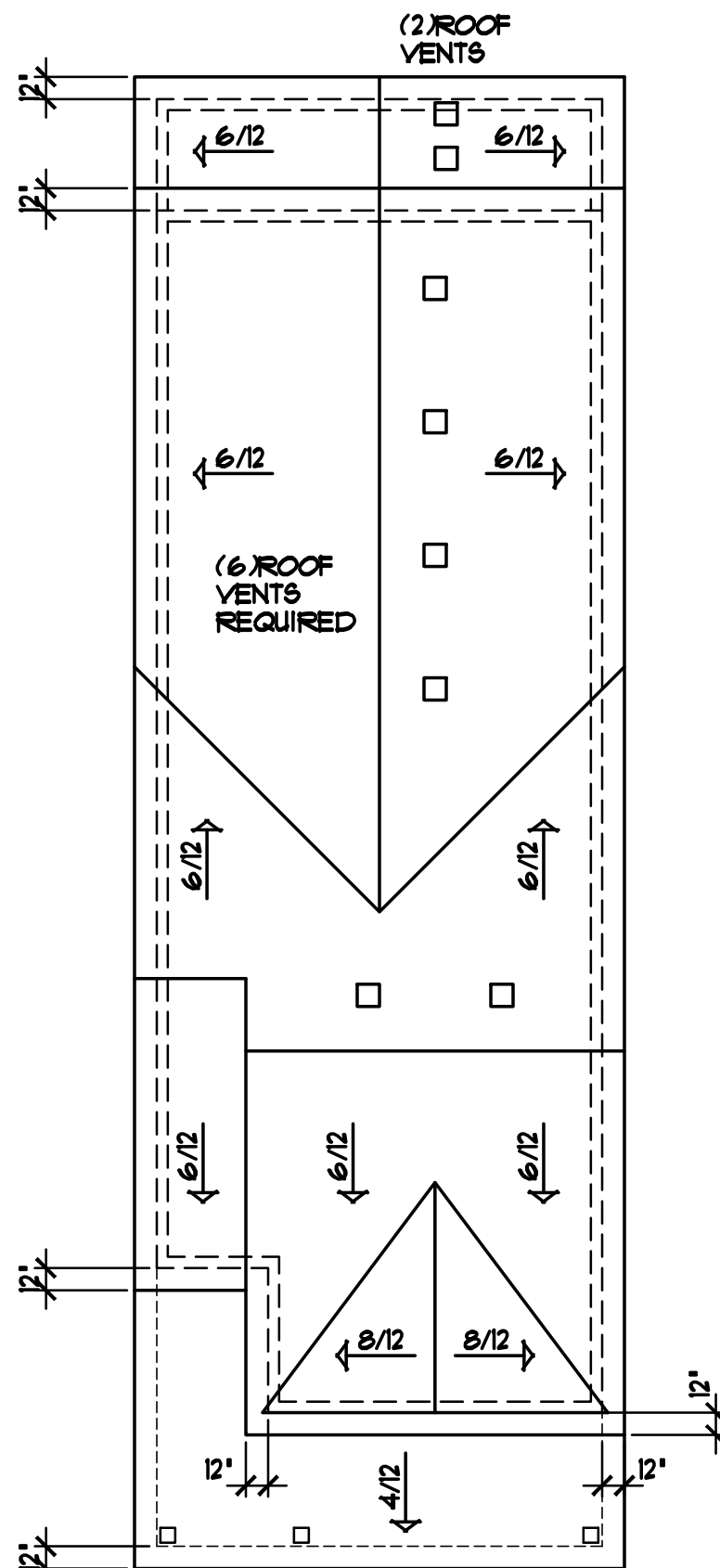
LEFT ELEVATION 1/8"=1'-0"

GENERAL FRAMING & CONSTRUCTION NOTES

- 9'-1 1/8' PLATE HEIGHT • ENTIRE FIRST FLOOR (UNLESS NOTED OTHERWISE)
- 8'-1 1/8' PLATE HEIGHT • ENTIRE SECOND FLOOR (UNLESS NOTED OTHERWISE)
- PROVIDE 12" HEEL • ALL 6/12 ROOF TRUSSES (UNLESS NOTED OTHERWISE)
- PROVIDE STANDARD HEEL (NOT RAISED) • 4/12 ROOF TRUSSES (UNLESS NOTED OTHERWISE)

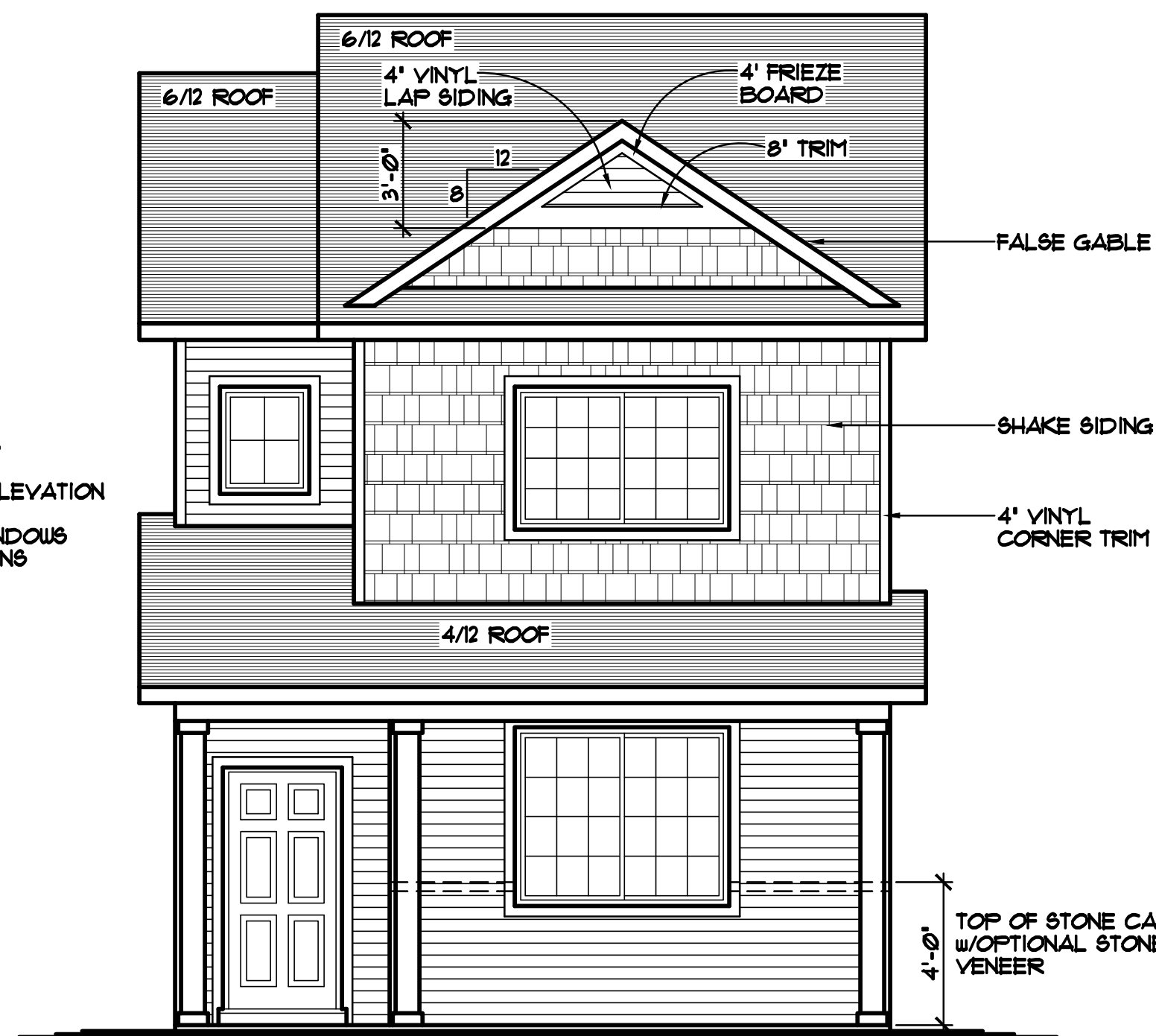


REAR ELEVATION 1/8"=1'-0"



BIRD'S-EYE ROOF PLAN 1/8"=1'-0"

- GENERIC WINDOW SIZES SPECIFIED
- VINYL SIDING/CORNER TRIM
- ALUMINUM SOFFITS & FASCIA
- WINDOWS SHOWN w/OPTIONAL GRIDS
- 4' WINDOW & DOOR TRIM • FRONT ELEVATION
- 2 1/2" VINYL J-CHANNEL AROUND WINDOWS & DOORS • REAR & SIDE ELEVATIONS



FRONT ELEVATION "A" 1/4"=1'-0"

© 2023 COPYRIGHT NOTICE, ALL RIGHTS RESERVED
CROIX DESIGN and DRAFTING, INC.

REVISIONS	BY
XXXXX	XX

SPECIAL NOTICE:
CROIX DESIGN and DRAFTING, INC. ACCEPTS NO RESPONSIBILITY FOR ERRORS OR OMISSIONS. THESE DRAWINGS ARE DESIGN CONCEPT ONLY. EVERY EFFORT HAS BEEN MADE DESIGNING AND PREPARING THESE PLANS AND CHECKING THEM FOR ACCURACY. THE OWNER, GENERAL CONTRACTOR, SUB-CONTRACTORS, AND SUPPLIERS MUST CHECK ALL DETAILS AND DIMENSIONS AND BE RESPONSIBLE FOR ANY CHANGES OR ADJUSTMENTS REQUIRED DURING ACTUAL CONSTRUCTION. NO REPRESENTATION IS MADE OR IMPLIED FOR ACCURACY.

© COPY RIGHT NOTICE, ALL RIGHTS RESERVED
CROIX DESIGN and DRAFTING, INC.

THESE ARCHITECTURAL PLANS AND ALL RELATED WORKS ARE PROTECTED BY UNITED STATES COPY RIGHT LAWS, AND MAY NOT BE REPRODUCED, DISTRIBUTED OR OTHERWISE USED IN ANY MANNER WITHOUT THE EXPRESS WRITTEN PERMISSION OF CROIX DESIGN and DRAFTING, INC.

DESIGN and DRAFTING BY:



- ARCHITECTURAL DESIGN and DRAFTING SERVICE •
- HOME PALN SERVICE • CUSTOM HOMES • REMODELING •
- PHONE: 763.757.5997 • ANDOVER, MINNESOTA •
- WWW.CROIXDESIGN.COM •

BUILT BY:

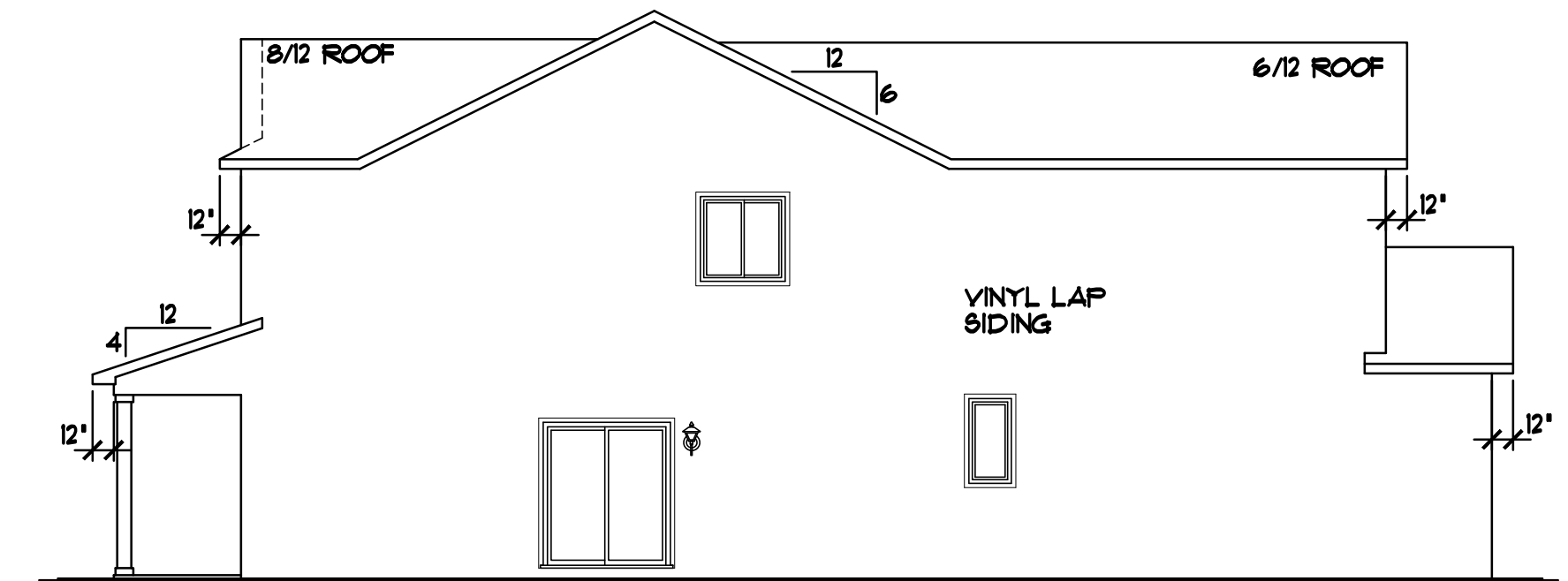
CENTRA HOMES LLC

THE ALPINE

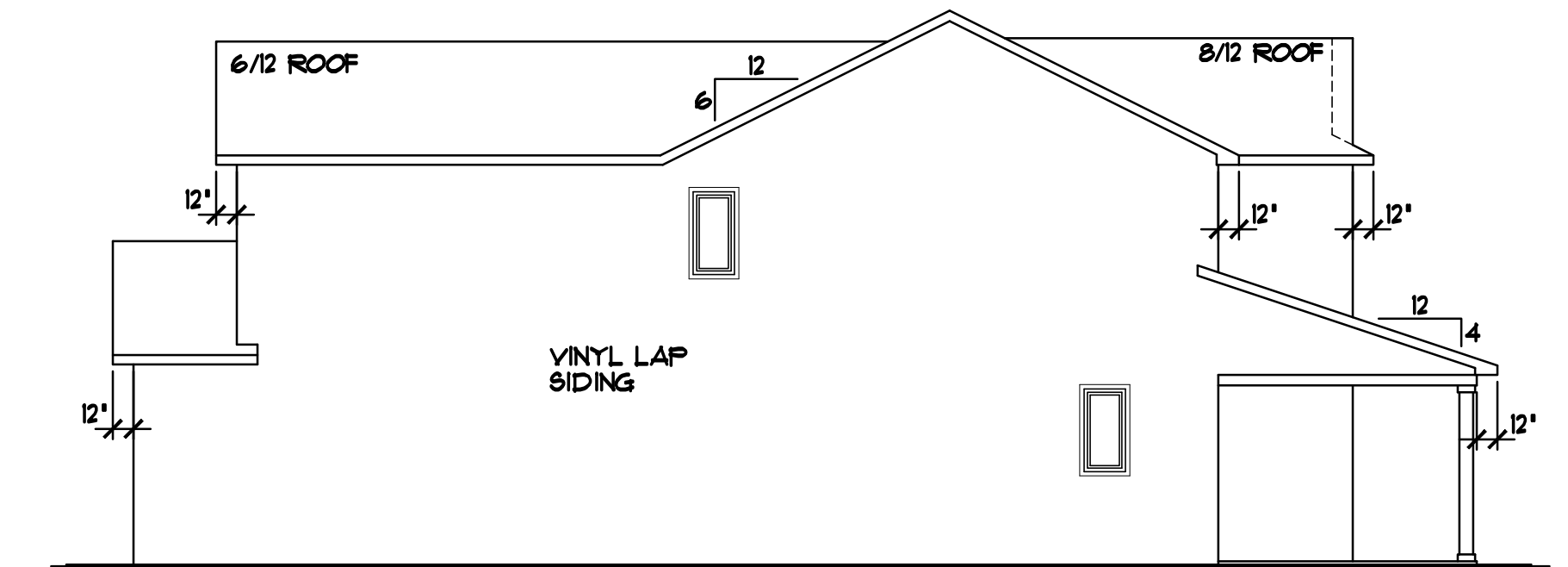
111 SQ. FT. FIRST FLOOR
959 SQ. FT. SECOND FLOOR
1670 SQ. FT. TOTAL

89 SQ. FT. STAIRS/OPEN AREA (NOT INCLUDED)

DRAWN N.F.	CHECKED --
DATE: 10/03/2023	SCALE: AS NOTED
CADD FILE # 23205	
SHEET 1 OF 6	



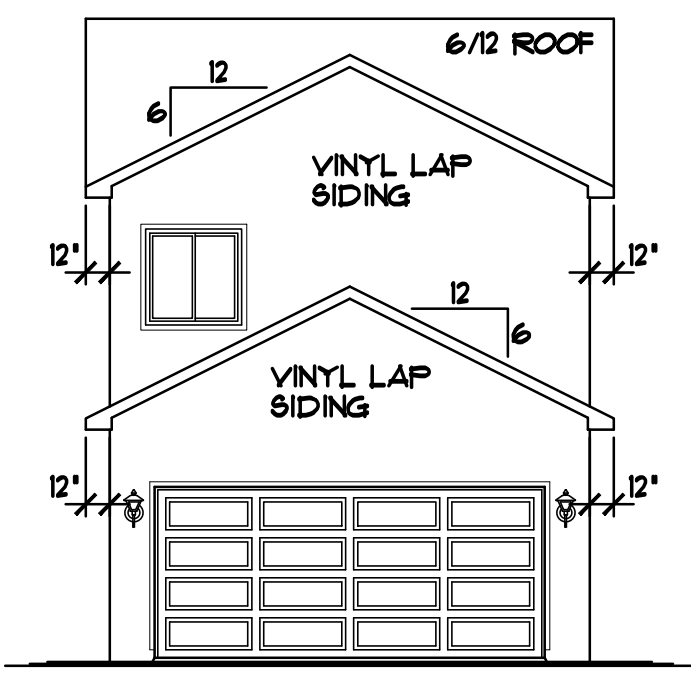
RIGHT ELEVATION 1/8"=1'-0"



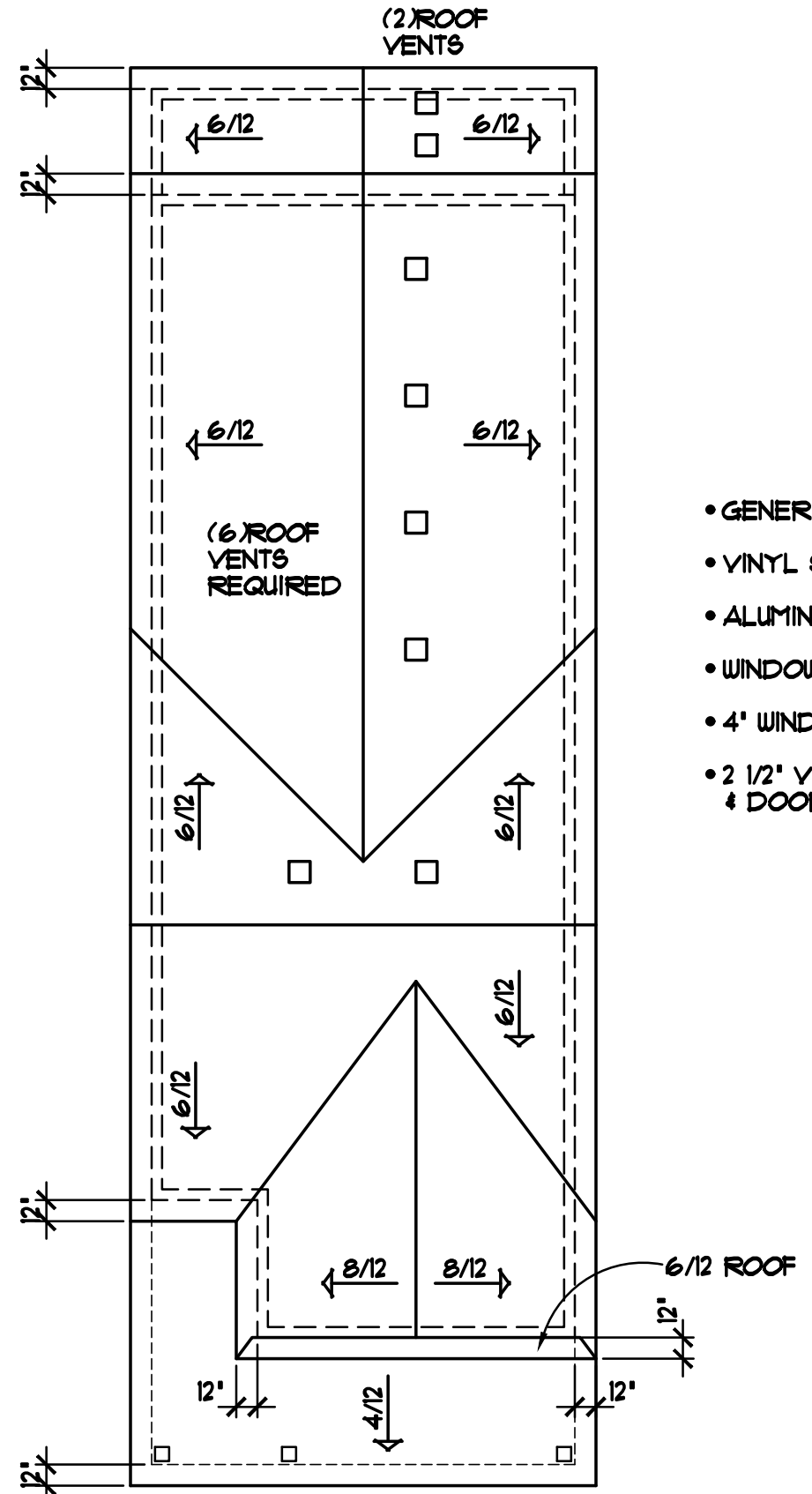
LEFT ELEVATION 1/8"=1'-0"

GENERAL FRAMING & CONSTRUCTION NOTES

- 9'-1 1/8' PLATE HEIGHT • ENTIRE FIRST FLOOR (UNLESS NOTED OTHERWISE)
- 8'-1 1/8' PLATE HEIGHT • ENTIRE SECOND FLOOR (UNLESS NOTED OTHERWISE)
- PROVIDE 12" HEEL • ALL 6/12 ROOF TRUSSES, ADJUST HEEL HEIGHT • 8/12 ROOF TO MATCH FASCIA WITH 6/12 ROOF (UNLESS NOTED OTHERWISE)
- PROVIDE STANDARD HEEL (NOT RAISED) • 4/12 ROOF TRUSSES (UNLESS NOTED OTHERWISE)

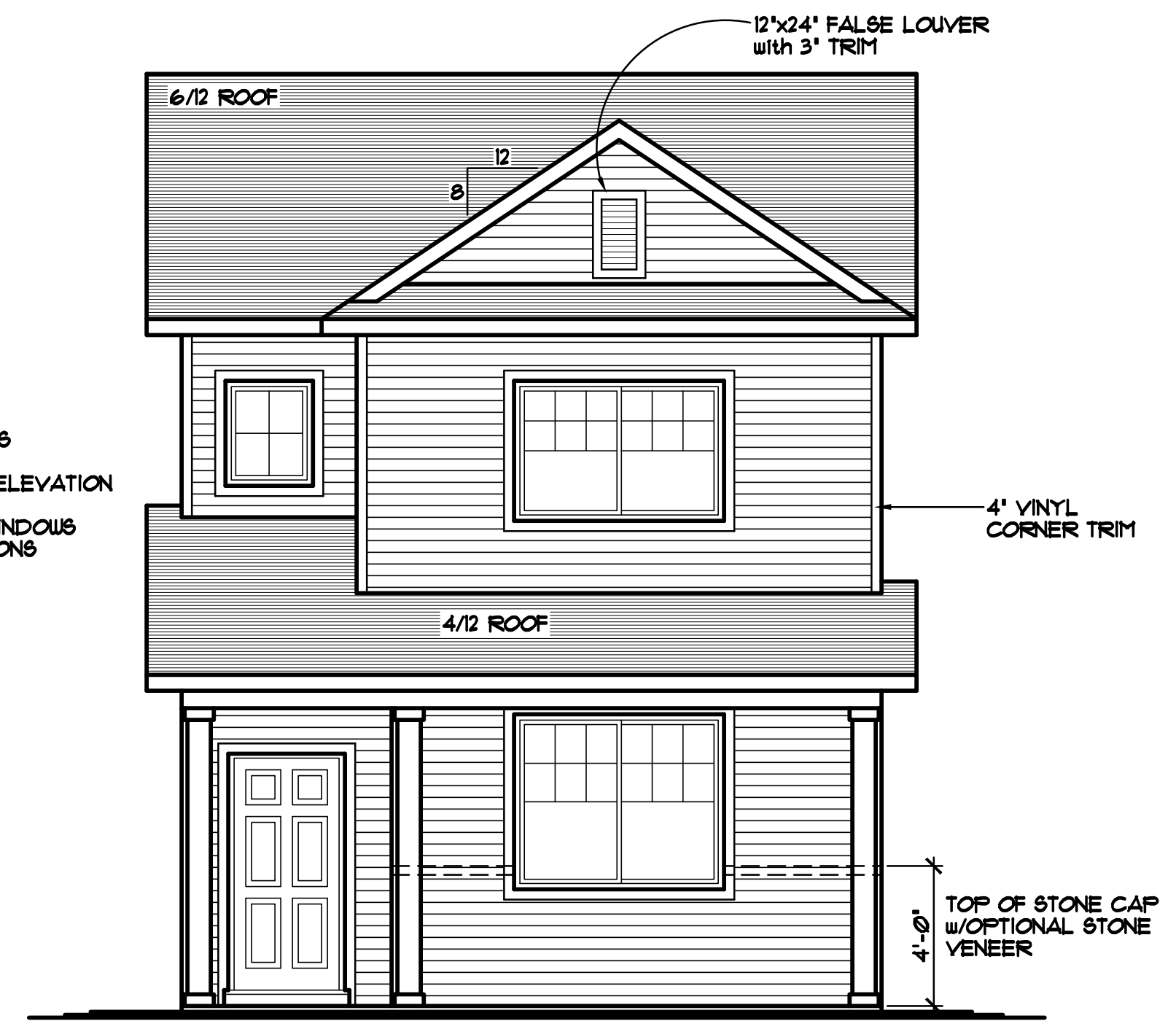


REAR ELEVATION 1/8"=1'-0"



BIRD'S-EYE ROOF PLAN 1/8"=1'-0"

- GENERIC WINDOW SIZES SPECIFIED
- VINYL SIDING/CORNER TRIM
- ALUMINUM SOFFITS & FASCIA
- WINDOWS SHOWN w/OPTIONAL GRIDS
- 4" WINDOW & DOOR TRIM • FRONT ELEVATION
- 2 1/2" VINYL J-CHANNEL AROUND WINDOWS & DOORS • REAR & SIDE ELEVATIONS



FRONT ELEVATION "B" 1/4"=1'-0"

© 2023 COPYRIGHT NOTICE, ALL RIGHTS RESERVED CROIX DESIGN and DRAFTING, INC.

REVISIONS	BY
XXXXX	XX

SPECIAL NOTICE:
CROIX DESIGN and DRAFTING, INC. ACCEPTS NO RESPONSIBILITY FOR ERRORS OR OMISSIONS. THESE DRAWINGS ARE DESIGN CONCEPT ONLY. EVERY EFFORT HAS BEEN MADE DESIGNING AND PREPARING THESE PLANS AND CHECKING THEM FOR ACCURACY. THE OWNER, GENERAL CONTRACTOR, SUB-CONTRACTORS, AND SUPPLIERS MUST CHECK ALL DETAILS AND DIMENSIONS AND BE RESPONSIBLE FOR ANY CHANGES OR ADJUSTMENTS REQUIRED DURING ACTUAL CONSTRUCTION. NO REPRESENTATION IS MADE OR IMPLIED FOR ACCURACY.

© COPY RIGHT NOTICE, ALL RIGHTS RESERVED CROIX DESIGN and DRAFTING, INC.
THESE ARCHITECTURAL PLANS AND ALL RELATED WORKS ARE PROTECTED BY UNITED STATES COPY RIGHT LAWS, AND MAY NOT BE REPRODUCED, DISTRIBUTED OR OTHERWISE USED IN ANY MANNER WITHOUT THE EXPRESS WRITTEN PERMISSION OF CROIX DESIGN and DRAFTING, INC.

DESIGN and DRAFTING BY:

• ARCHITECTURAL DESIGN and DRAFTING SERVICE •
• HOME PALN SERVICE • CUSTOM HOMES • REMODELING •
• PHONE: 763.757.5997 • ANDOVER, MINNESOTA •
• WWW.CROIXDESIGN.COM •

BUILT BY:

CENTRA HOMES LLC

THE ALPINE

711 SQ. FT. FIRST FLOOR
959 SQ. FT. SECOND FLOOR
1670 SQ. FT. TOTAL

89 SQ. FT. STAIRS/OPEN AREA (NOT INCLUDED)

DRAWN N.F.	CHECKED --
DATE: 10/03/2023	SCALE: AS NOTED
CADD FILE # 23205	
SHEET 1 OF 6	