

CALYX DESIGN GROUP
 Landscape Architecture - Planning
 475 Cleveland Avenue N. | Suite 101A | St. Paul, MN 55104
 telephone: 651.788.9018
 internet: www.calyxdesigngroup.com

I hereby certify that this plan, specification or other document was prepared by me or under my direct supervision and that I am a duly Licensed Professional Engineer in the State of Minnesota.
PRELIMINARY
 Print Name: _____ License No. 46324
 Signature: _____ Date: _____

WATERFRONT VILLAGE
 RAMSEY, MINNESOTA
PRELIMINARY LANDSCAPE PLAN
 FOR
CENTRA HOMES
 11460 ROBINSON DRIVE, COON RAPIDS, MN

DRAWN BY	BH
DATE	12/15/23
REVISIONS	
1/12/24	SITE PLAN REV.
CAD FILE	24108-L
PROJECT NO.	24108
	L6.1

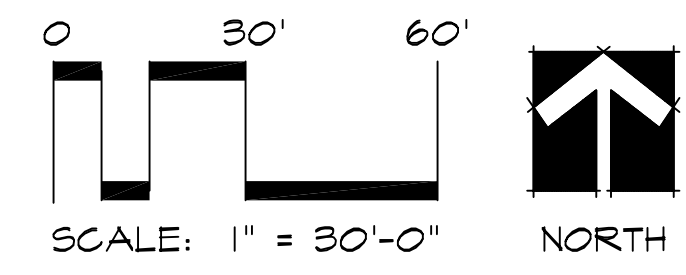
MUNICIPAL LANDSCAPE CALCULATIONS:

Minimum Planting Sizes
 Coniferous Trees: 5' Hgt.
 Ornamental Trees: 1.0" Cal.
 Shade/Deciduous Island Trees: 1.0" Cal.
 Shade/Deciduous Overstory Trees: 1.0" Cal.
 Deciduous Shrubs: 24"

City of Ramsey COR-4b Residential Units:
 One Overstory Tree Per 35 Feet of Street Frontage
 2,250 LF Public Street Facing Frontage = 64
 2,660LF Internal Roads X2 (Double-Loaded) / 35 = 152
 Development Front Yard Trees To Be Planted: 216
 Development Rear Yard & Buffer Trees To Be Planted: 42

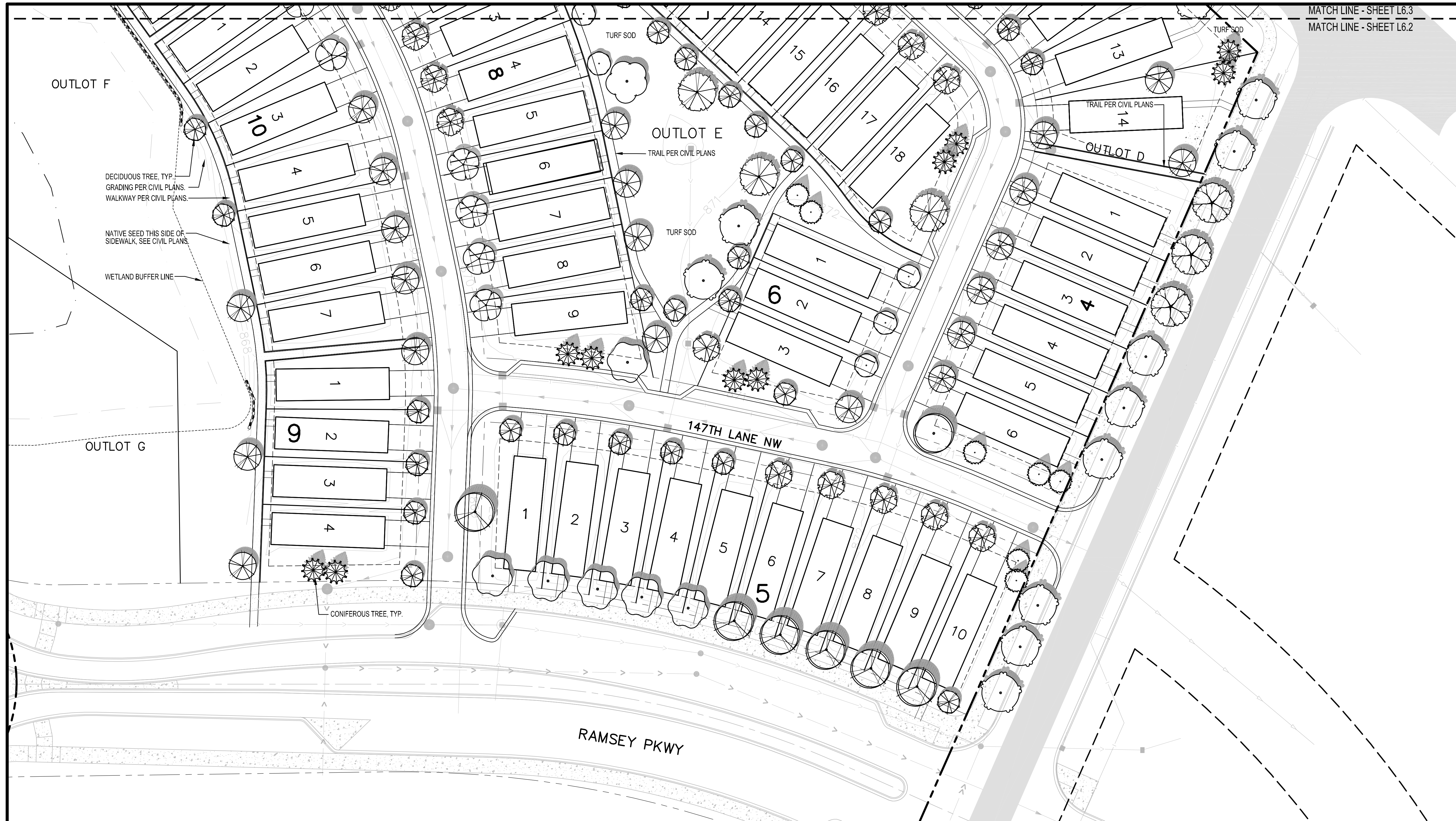
GENERAL NOTES:

- Landscape contractor to provide a new irrigation layout plan for the property. See Landscape Notes.
- See Civil Engineer's plans for grading layout and requirements
- Contractor to coordinate any work in the right-of-way with City of Ramsey Public Works Department.
- Sod all disturbed areas except plant beds and areas noted to receive mulch or native seed.
- Place a minimum of 4" topsoil, with not more than 35% and content. Topsoil inspection is required prior to installing sod and trees.
- Refer to builder's specifications for additional requirements.
- See Sheet L6.4 for Landscape Details, Notes, Schedules, and Typical Foundation Planting Enlargement. Landscape contractor shall be responsible for determine their own plant quantities per unit during bidding.
- Landscape contractor is responsible for verification of soils and graded condition prior to mobilization and shall notify the General Contractor if earthwork is not acceptable. Landscape contractor is responsible for fine grading, or grade to within 1" of final set elevation.



See Sheet L6.4 for Planting Details, Notes, and Requirements

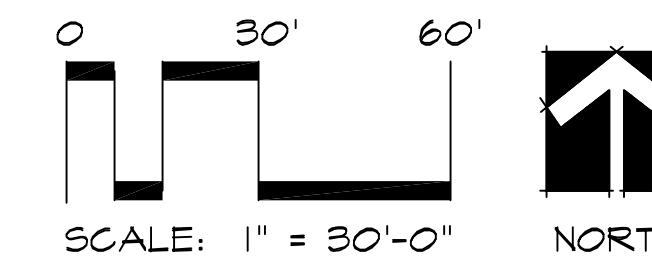
LANDSCAPE LAYOUT WEST:



GENERAL NOTES:

1. Landscape contractor to provide a new irrigation layout plan for the property. See Landscape Notes.
2. See Civil Engineer's plans for grading layout and requirements
3. Contractor to coordinate any work in the right-of-way with City of Ramsey Public Works Department.
4. Sod all disturbed areas except plant beds and areas noted to receive mulch or native seed.
5. Place a minimum of 4" topsoil, with not more than 35% sand content. Topsoil inspection is required prior to installing sod and trees.
6. Refer to builder's specifications for additional requirements.
7. See Sheet L6.4 for Landscape Details, Notes, Schedules, and Typical Foundation Planting Enlargement. Landscape contractor shall be responsible for determine their own plant quantities per unit during bidding.
8. Landscape contractor is responsible for verification of soils and graded condition prior to mobilization and shall notify the General Contractor if earthwork is not acceptable. Landscape contractor is responsible for fine grading, or grade to within 1" of final set elevation.

LANDSCAPE LAYOUT SOUTH:



See Sheet L6.4 for Planting Details, Notes, and Requirements

CALYX DESIGN GROUP
 Landscape Architecture - Planning
 475 Cleveland Avenue N. | Suite 101A | St. Paul, MN 55104
 telephone: 651.788.9018
 internet: www.calyxdesigngroup.com

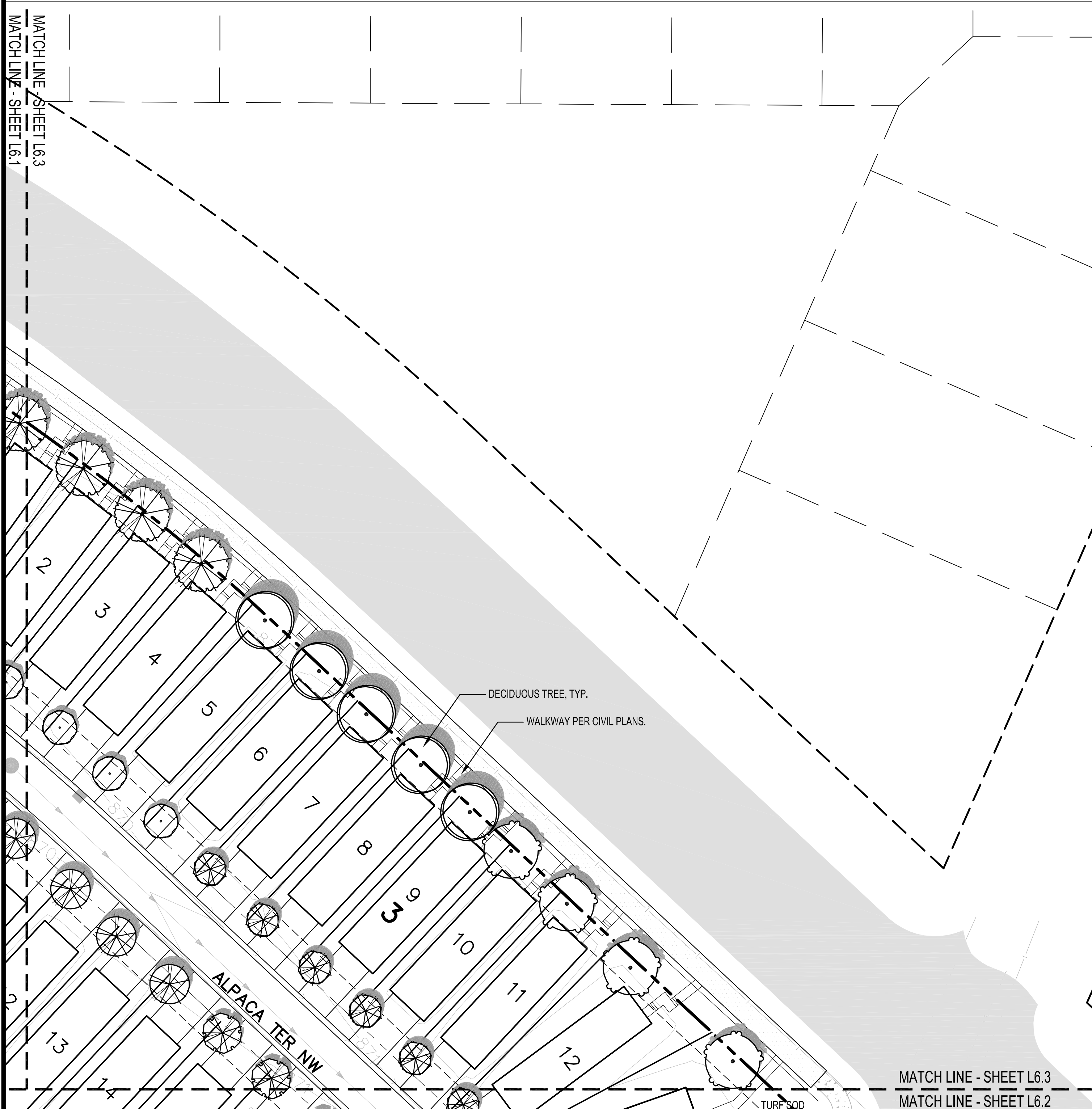
I hereby certify that this plan, specification, or contract was prepared by me or under my direct supervision and that I am a duly Licensed Professional Landscape Architect in the State of Minnesota.
 Print Name: **Barbara Hageman, RLA**
 Signature: _____
 Date: _____
PRELIMINARY
 License No. 46924

WATERFRONT VILLAGE
 RAMSEY, MINNESOTA
PRELIMINARY LANDSCAPE PLAN
 FOR
CENTRA HOMES
 11460 ROBINSON DRIVE, COON RAPIDS, MN

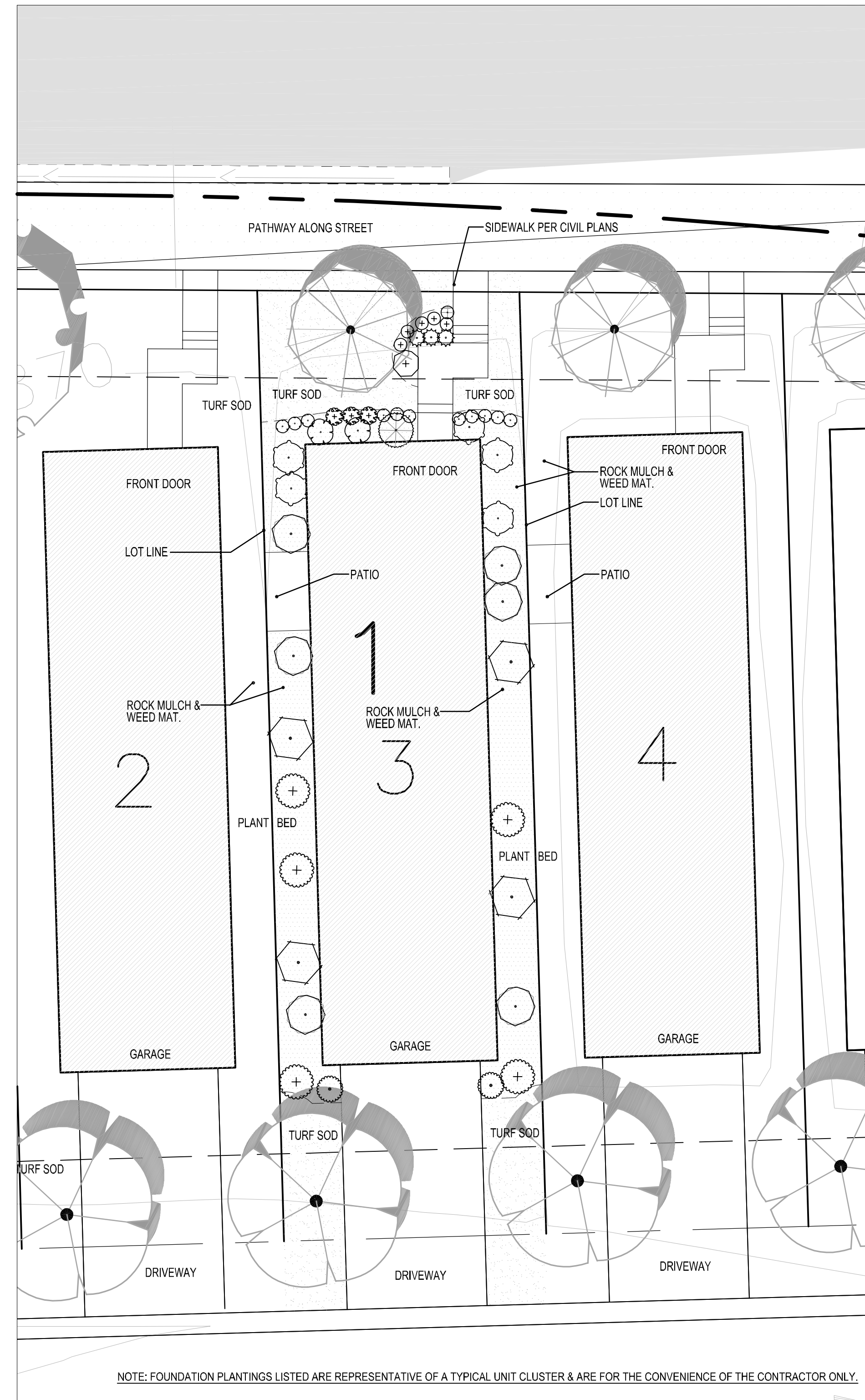
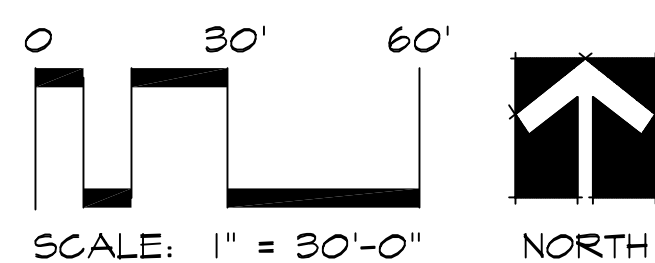
DRAWN BY	BH
DATE	12/15/23
REVISIONS	
1/12/24	SITE PLAN REV.
CAD FILE	24108-L
PROJECT NO.	24108
	L6.2

GENERAL NOTES:

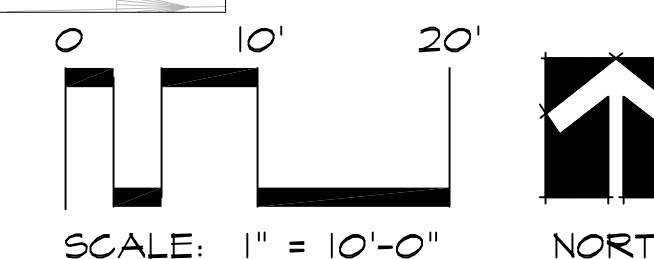
1. Landscape contractor to provide a new irrigation layout plan for the property. See Landscape Notes.
2. See Civil Engineer's plans for grading layout and requirements
3. Contractor to coordinate any work in the right-of-way with City of Ramsey Public Works Department.
4. Sod all disturbed areas except plant beds and areas noted to receive mulch or native seed.
5. Place a minimum of 4" topsoil, with not more than 35% and content. Topsoil inspection is required prior to installing sod and trees.
6. Refer to builder's specifications for additional requirements.
7. See Sheet L6.4 for Landscape Details, Notes, Schedules, and Typical Foundation Planting Enlargement. Landscape contractor shall be responsible for determine their own plant quantities per unit during bidding.
8. Landscape contractor is responsible for verification of soils and graded condition prior to mobilization and shall notify the General Contractor if earthwork is not acceptable. Landscape contractor is responsible for fine grading, or grade to within 1" of final set elevation.



LANDSCAPE LAYOUT EAST:

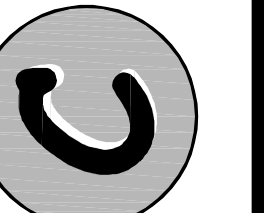


TYPICAL FOUNDATION PLANTING ENLARGEMENT:



See Sheet L6.4 for Planting Details, Notes, and Requirements

CALYX DESIGN GROUP
 Landscape Architecture - Planning
 475 Cleveland Avenue N. | Suite 101A | St. Paul, MN 55104
 telephone: 651.788.9018
 internet: www.calyxdesigngroup.com



I hereby certify that this plan, specification, or other document was prepared by me or under my direct supervision and that I am a duly Licensed Professional Engineer in the State of Minnesota.
 Print Name: Benjamin Berg, R.L.A.
 Signature: _____
 Date: _____
PRELIMINARY
 License No. 48924

WATERFRONT VILLAGE
 RAMSEY, MINNESOTA
PRELIMINARY LANDSCAPE PLAN
 FOR
CENTRA HOMES
 11460 ROBINSON DRIVE, COON RAPIDS, MN

DRAWN BY	BH
DATE	12/15/23
REVISIONS	
1/12/24	SITE PLAN REV.

CAD FILE
 24108-L
 PROJECT NO.
 24108
 L6.2

