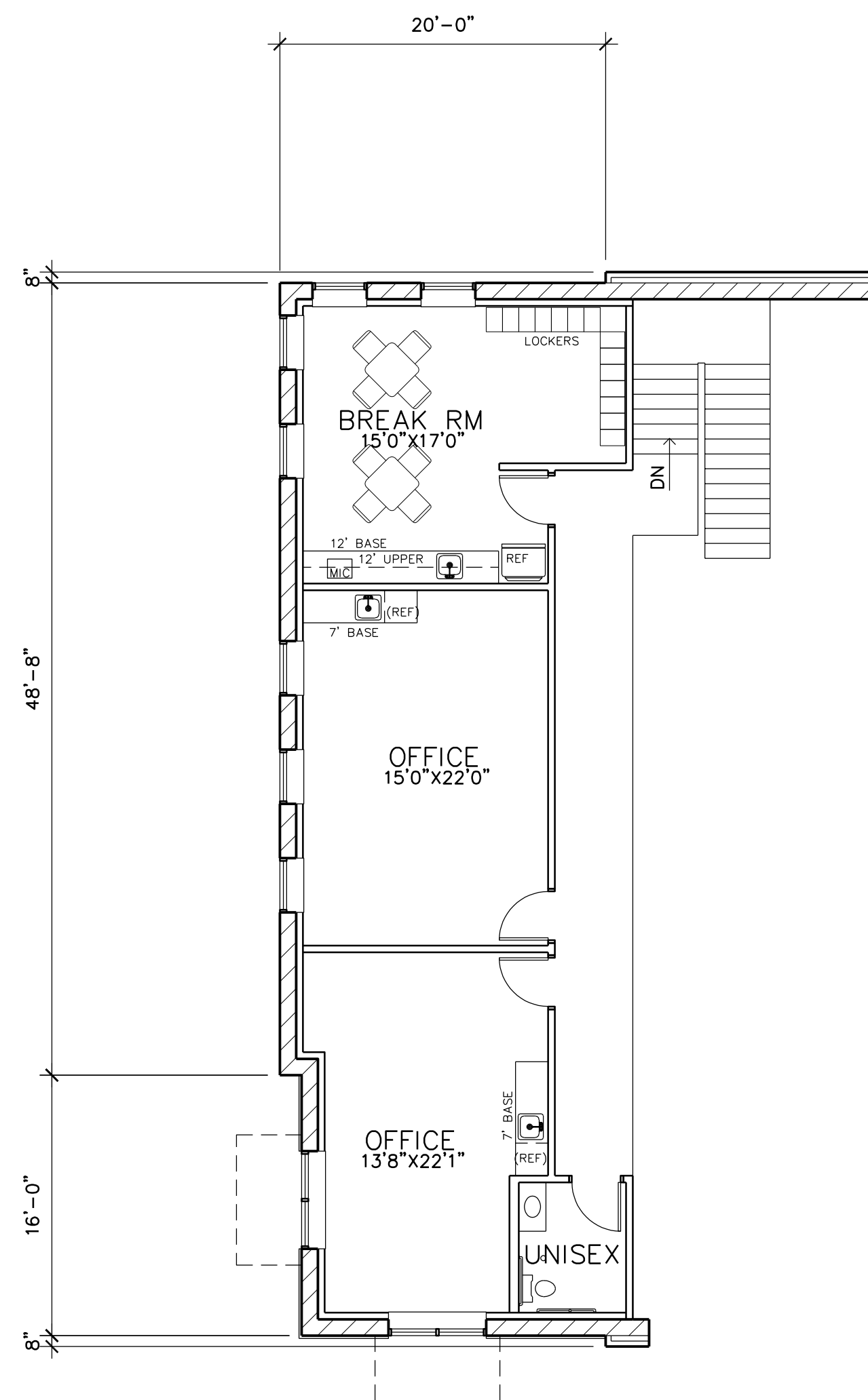
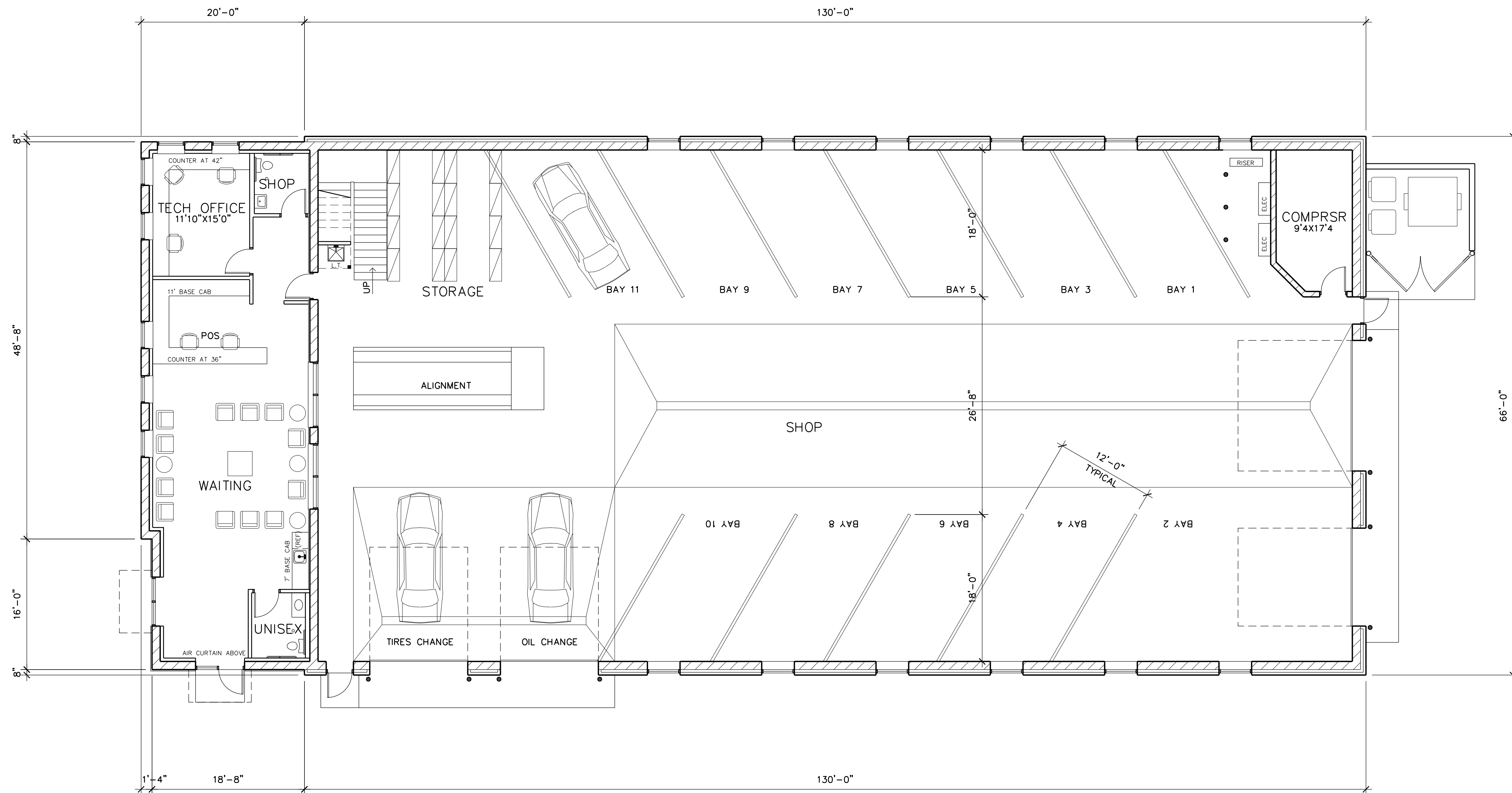


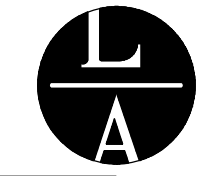
Filename: COMPLETE AUTO SERVICE RAMSEY\COMPLETE AUTO SERVICE RAMSEY-A2



2 MEZZANINE PLAN
A2 SCALE: 1/8" = 1'-0"



1 FLOOR PLAN
A2 SCALE: 1/8" = 1'-0"



LAMPERT ARCHITECTS

420 Summit Avenue
St. Paul, MN 55102
Phone: 763.755.1211 Fax: 763.757.2849
lampert@lampert-arch.com

ARCHITECT CERTIFICATION:
I HEREBY CERTIFY THAT THIS PLAN, SPECIFICATION OR REPORT WAS PREPARED BY ME OR UNDER MY DIRECT SUPERVISION AND THAT I AM A DULY LICENSED ARCHITECT UNDER THE LAWS OF THE STATE OF MINNESOTA.

PRELIMINARY
NOT FOR CONSTRUCTION

SIGNATURE
LEONARD LAMPERT
PROJECT NO.
13669
LICENSE NO.
DATE



CONCRETE & MASONRY WORK - RESIDENTIAL & COMMERCIAL
1844 ULYSSES ST. NE. PHONE: (763) 434-8870
EAST BETHEL, MN 55011 FAX: (763) 434-7120

COMPLETE AUTO SERVICE
Ramsey, Minnesota

Copyright 2023
Leonard Lampert Architects Inc.

Project Designer: JAMES B

Drawn By: JRB

Checked By: LL

Revisions

12/1/23	PRELIMINARY
12/8/23	EDA SUBMITTAL
1/23/24	CITY SUBMITTAL

FLOOR PLAN

Sheet Number

A2

Project No. 230608-3