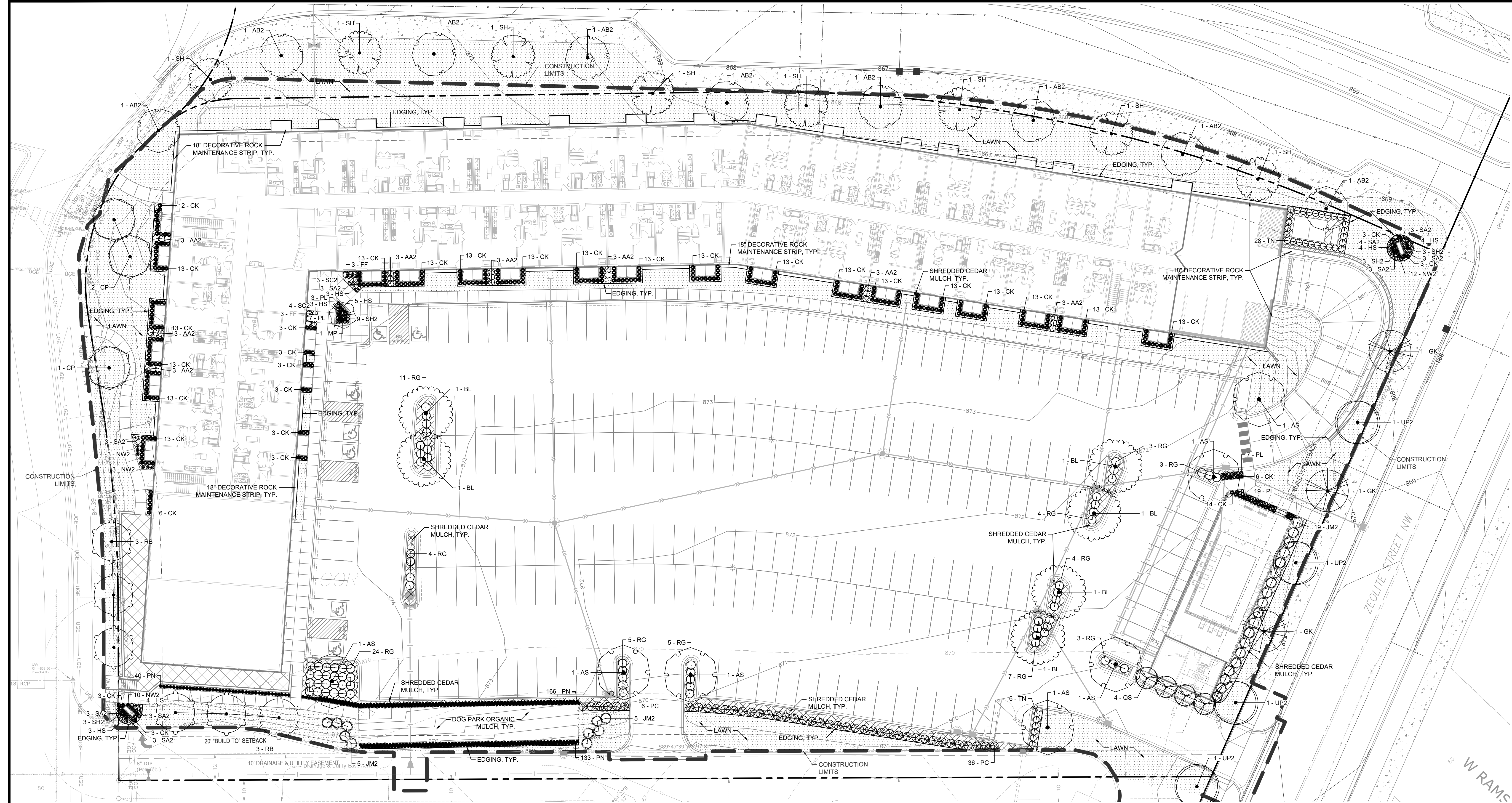


**PRELIMINARY:
NOT FOR
CONSTRUCTION**



NORHART RAMSEY
ZEOLITE ST NW & RAMSEY PKWY, RAMSEY, MN 55303
NORHART
1081 4TH ST SW, FOREST LAKE, MN 55025

PROJECT: NORHART RAMSEY
ISSUE/SUBMITTAL SUMMARY
DATE: 04/03/24
DESCRIPTION: CITY SUBMITTAL
REVISION SUMMARY
DATE: DESCRIPTION
LANDSCAPE PLAN
L1.0

CODE	COMMON / BOTANICAL NAME	QTY	CONT	NATIVE PLANTS	POLLINATOR FRIENDLY
DECIDUOUS TREES					
AS	Sugar Maple / <i>Acer saccharum</i>	7	2.5' Cal. B&B	NATIVE	Y
AB2	Autumn Blaze Maple / <i>Acer x freemanii</i> 'Jeffersred' TM	9	2.5' Cal. B&B	NATIVE CULTIVAR	Y
RB	River Birch / <i>Betula nigra</i>	6	2.5' Cal. B&B	NATIVE	N
CP	Prairie Sentinel Hackberry / <i>Celtis occidentalis</i> 'JFS-KSU1' TM	3	2.5' Cal. B&B	NATIVE CULTIVAR	Y
SH	Skyline Thornless Honey Locust / <i>Gleditsia triacanthos inermis</i> 'Skycole' TM	8	2.5' Cal. B&B	NATIVE CULTIVAR	N
GK	Kentucky Coffeetree / <i>Gymnocladus dioica</i>	3	2.5' Cal. B&B	NATIVE CULTIVAR	Y
QS	Crimson Spire Oak / <i>Quercus robur x alba</i> 'Crimschmidt' TM	4	2.5' Cal. B&B	NOT NATIVE	Y
BL	Boulevard Linden / <i>Tilia americana</i> 'Boulevard'	6	2.5' Cal. B&B	NATIVE CULTIVAR	Y
UP2	Princeton American Elm / <i>Ulmus americana</i> 'Princeton'	4	2.5' Cal. B&B	NATIVE CULTIVAR	Y
ORNAMENTAL TREES					
MP	Prairie Fire Crabapple / <i>Malus x</i> 'Prairie Fire'	1	1.5' Cal. B&B	NATIVE CULTIVAR	Y
SHRUBS					
AA2	Autumn Magic Black Chokeberry / <i>Aronia melanocarpa</i> 'Autumn Magic'	24	24" HT.	NATIVE	Y
FF	Gold Cluster™ Forsythia / <i>Forsythia x intermedia</i> 'Courtaneur'	6	24" HT.	NATIVE	Y
JM2	Medora Juniper / <i>Juniperus scopulorum</i> 'Medora'	29	#5 CONT	NOT NATIVE	N
PC	Dwarf Norway Spruce / <i>Picea abies</i> 'Nana'	42	24" HT.	NATIVE	Y
RG	Gro-Low Fragrant Sumac / <i>Rhus aromatica</i> 'Gro-Low'	73	24" HT.	NATIVE	Y
TN	Nova Japanese Yew / <i>Taxus cuspidata</i> 'Nova'	34	#5 CONT	NATIVE	Y
GRASSES					
CK	Feather Reed Grass / <i>Calamagrostis x acutiflora</i> 'Karl Foerster'	328	#1 CONT	NOT NATIVE	N
PN	Northwind Switch Grass / <i>Panicum virgatum</i> 'Northwind'	339	#1 CONT	NOT NATIVE	N
SH2	Prairie Dropseed / <i>Sporobolus heterolepis</i>	18	#1 CONT	NATIVE	Y
PERENNIALS					
HS	Stella Supreme Daylily / <i>Hemerocallis x</i> 'Stella Supreme'	27	#1 CONT	NATIVE	Y
NW2	Walkers Low Catmint / <i>Nepeta x faassenii</i> 'Walkers Low'	28	#1 CONT	NOT NATIVE	Y
PL	Little Spire Russian Sage / <i>Perovskia atriplicifolia</i> 'Little Spire'	36	#1 CONT	NOT NATIVE	Y
SC2	Cardonna Salvia / <i>Salvia x superba</i> 'Cardonna'	7	#1 CONT	NOT NATIVE	Y
SA2	Showy Stonecrop / <i>Sedum spectabile</i> 'Autumn Fire'	27	#1 CONT	NOT NATIVE	Y

Planting Type	Required Numbers
Deciduous/ coniferous trees	1 tree per 50 lineal feet of site perimeter, or 1 tree per 1,000 square feet of building footprint, whichever is greater. For building expansions, 1 additional tree is required for each 1,000 square feet of new building footprint area.
Shrubs	1 shrub per 30 lineal feet of site perimeter or 1 shrub per 300 square feet of building footprint area, whichever is greater.

BUSINESS OR COMMERCIAL LANDSCAPE REQUIREMENTS	
1 TREE / 50 LF OF SITE PERIMETER	1,665 LF / 50 = 33 TREES REQUIRED SEE PLANT SCHEDULE
1 TREE / 1,000 SF OF BUILDING FOOTPRINT	43,905 SF / 1,000 = 44 TREES REQUIRED SEE PLANT SCHEDULE
1 SHRUB / 30 LF OF SITE PERIMETER	1,665 SF / 30 = 56 SHRUBS REQUIRED SEE PLANT SCHEDULE
1 SHRUB / 300 SF OF BUILDING FOOTPRINT	43,905 SF / 300 = 146 SHRUBS REQUIRED SEE PLANT SCHEDULE

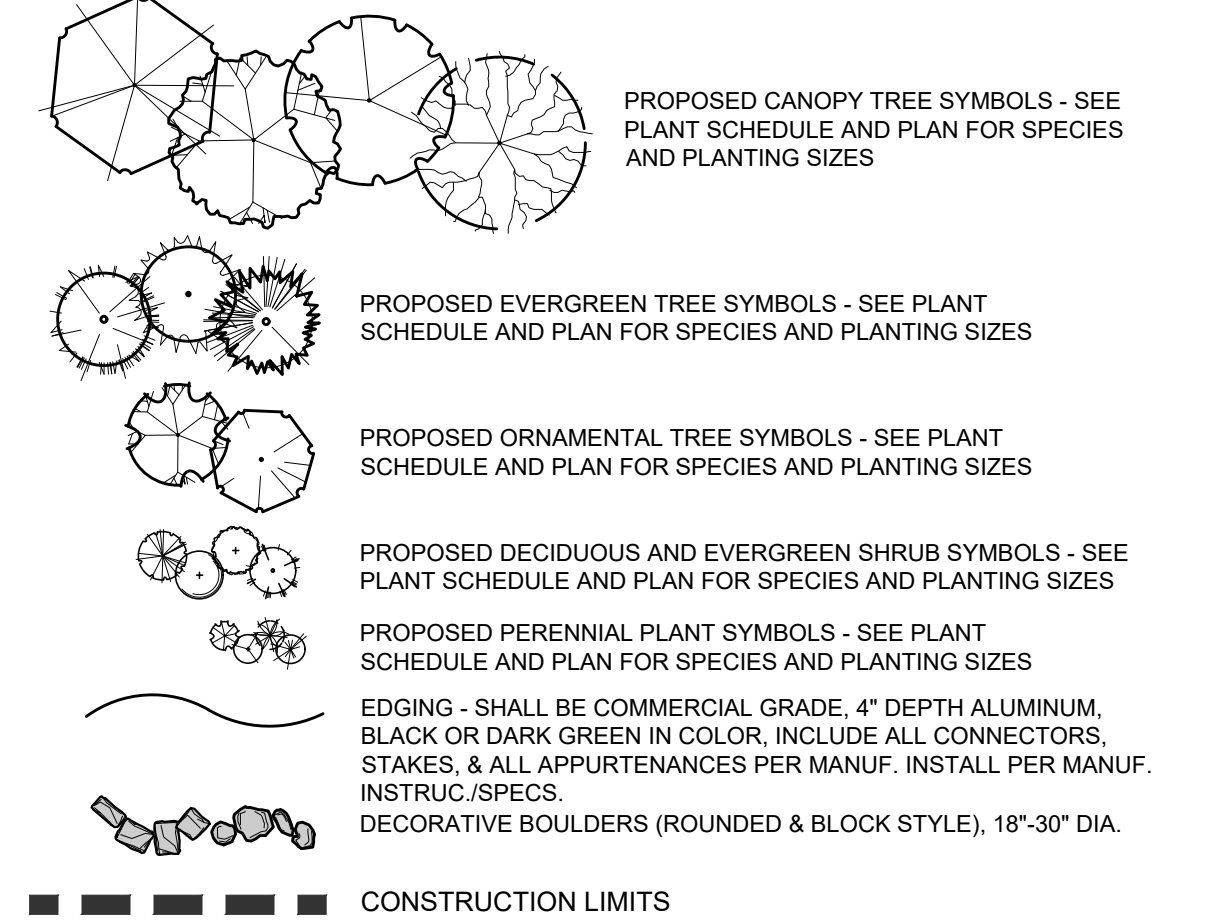
AREA	MULCH TYPE		EDGING	FABRIC	REMARKS
	MULCH TYPE	EDGING			
TREE RINGS	4" DEPTH, SHREDDED CEDAR	YES	NO		SEE DETAIL SHT. L1.1
PLANTING BEDS	4" DEPTH, SHREDDED CEDAR	YES	NO		
MAINT. STRIP AT BUILDING FOUNDATION	NA	NA	NA	NA	
PLAYGROUND MULCH	12" DEPTH ENGINEERED PLAYGROUND MULCH. SEE REMARKS. DEPTH AS SPECIFIED BY PLAYGROUND EQUIPMENT MANUFACTURER.	SEE SITE PLAN	YES		ORGANIC MULCH DESIGNED SPECIFICALLY FOR USE ON PLAYGROUNDS (CERTIFIED BY ANSI/ASTM FOR PLAYGROUND USE. (I.E. SYLVIA SOFTSTEP, SET, INC. PLAYGROUND, OR EQUIVALENT). PROVIDE SHOP DRAWINGS/DATA SHEETS FOR REVIEW.
DOG PARK MULCH	4" DEPTH, SHREDDED WOOD. SEE REMARKS	YES	YES		ORGANIC MULCH SPECIFICALLY FOR USE IN DOG PARKS OR PLAYGROUNDS. SHALL KNOT TOGETHER TO FORM MATTED, ACCESSIBLE SURFACE. (I.E. SYLVIA SOFTSTEP, SET, INC. PLAYGROUND, OR EQUIVALENT). PROVIDE SHOP DRAWINGS/DATA SHEETS FOR REVIEW.
NATIVE SEED AREAS	NA	NA	NA		

NOTE: COORDINATE ALL MULCH AND PLANTING BED MATERIAL PRIOR TO INSTALLATION. PROVIDE SAMPLES AND SHOP DRAWINGS/PHOTOS/DATA SHEETS OF ALL MATERIALS.

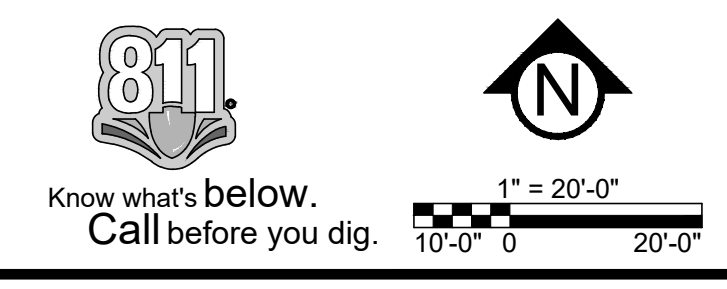
SEASON	PLANTING SEASON SCHEDULE		REMARKS
	CONIFEROUS	DECIDUOUS	
SPRING PLANTING	APRIL 15 - JUNE 15	APRIL 15 - JUNE 15	
FALL PLANTING	AUGUST 21 - SEPTEMBER 30	AUGUST 15 - NOVEMBER 15	

NOTE: ADJUSTMENTS TO PLANTING DATES MUST BE APPROVED IN WRITING BY THE LANDSCAPE ARCHITECT.

LEGEND	
	Dog Park Organic Mulch / Dog Park Mulch
	Rock Maintenance Strip / Rock Maintenance Strip
	Shredded Cedar Mulch / Shredded Hardwood Mulch
	Blue Grass Based / Sod



SEE SHEET C0.1 FOR GENERAL LANDSCAPE NOTES



L1.0

