

HARMONY FARMS 2ND ADDITION

CITY OF RAMSEY
 COUNTY OF ANOKA
 SEC. 10, T. 32, R. 25

KNOW ALL PERSONS BY THESE PRESENTS: That DRP MN 1, LLC, a Delaware limited liability company, fee owner of the following described property situated in the City of Ramsey, County of Anoka, State of Minnesota:

Outlot B, Harmony Farms, Anoka County, Minnesota.

AND

Outlot C, Harmony Farms, Anoka County, Minnesota.

Has caused the same to be surveyed and platted as HARMONY FARMS 2ND ADDITION and does hereby dedicate to the public for public use the public ways and the drainage and utility easements as shown on this plat.

In witness whereof said DRP MN 1, LLC, a Delaware limited liability company, has caused these presents to be signed by its proper officer this ____ day of _____, 20____.

DRP MN 1

 signature
 _____ as _____
 printed Title

STATE OF MINNESOTA
 COUNTY OF _____

This instrument was acknowledged before me on _____ by _____ as _____ of DRP MN 1, LLC, a Delaware limited liability company, on behalf of the company.

 signature

 printed
 Notary Public, _____, County, Minnesota
 My Commission Expires _____

SURVEYOR'S CERTIFICATE

I Peter J. Hawkinson do hereby certify that this plat was prepared by me or under my direct supervision; that I am a duly Licensed Land Surveyor in the State of Minnesota; that this plat is a correct representation of the boundary survey; that all mathematical data and labels are correctly designated on this plat; that all monuments depicted on this plat have been, or will be correctly set within one year; that all water boundaries and wet lands, as defined in Minnesota Statutes, Section 505.01, Subd. 3, as of the date of this certificate are shown and labeled on this plat; and all public ways are shown and labeled on this plat.

Dated this ____ day of _____, 20____.

 Peter J. Hawkinson, Licensed Land Surveyor
 Minnesota License No. 42299

STATE OF MINNESOTA
 COUNTY OF _____

This instrument was acknowledged before me on this ____ day of _____, 20____ by Peter J. Hawkinson.

 signature

 printed
 Notary Public, _____, County, Minnesota
 My Commission Expires _____

CITY COUNCIL, CITY OF RAMSEY, Minnesota

This plat of HARMONY FARMS 2ND ADDITION was approved and accepted by the City Council of the City of Ramsey, Minnesota at a regular meeting thereof held this ____ day of _____, 20____, and said plat is in compliance with the provisions of Minnesota Statutes, Section 505.03, Subd. 2.

City Council, City of Ramsey, Minnesota

By: _____
 Mayor

By: _____
 Clerk

COUNTY SURVEYOR

I hereby certify that in accordance with Minnesota Statutes, Section 505.021, subd. 11, this plat has been reviewed and approved this ____ day of _____, 20____.

By: _____
 Charles F. Gitzen
 Anoka County Surveyor

COUNTY AUDITOR/TREASURER

Pursuant to Minnesota Statutes, Section 505.021, Subd. 9, taxes payable in the year 20____ on the land hereinbefore described have been paid. Also, pursuant to Minnesota Statutes, Section 272.12, there are no delinquent taxes and transfer entered this day of _____, 20____.

 Property Tax Administrator
 By: _____, Deputy

COUNTY RECORDER/REGISTRAR OF TITLES

I hereby certify that this plat of HARMONY FARMS 2ND ADDITION was filed in the Office of the County Recorder/Registrar of Titles for public record on this ____ day of _____, 20____, at ____ o'clock ____ .M. and was duly recorded as Document Number _____.

 County Recorder/Registrar of Titles
 By: _____, Deputy

HARMONY FARMS 2ND ADDITION

ANOKA HENNEPIN 2ND ADDITION

S89°22'16"E (PLAT)
S89°50'41"E (MEAS.)

1300.75 (PLAT)
1300.69 (MEAS.)

N LINE OF OUTLOT C, HARMONY FARMS

LAWRENCE
ESTATES

S89°50'41"E
1335.52

E 1/4 CORNER OF
SEC. 10, TWP. 32,
RGE. 25

W 1/4 CORNER OF
SEC. 10, TWP. 32,
RGE. 25

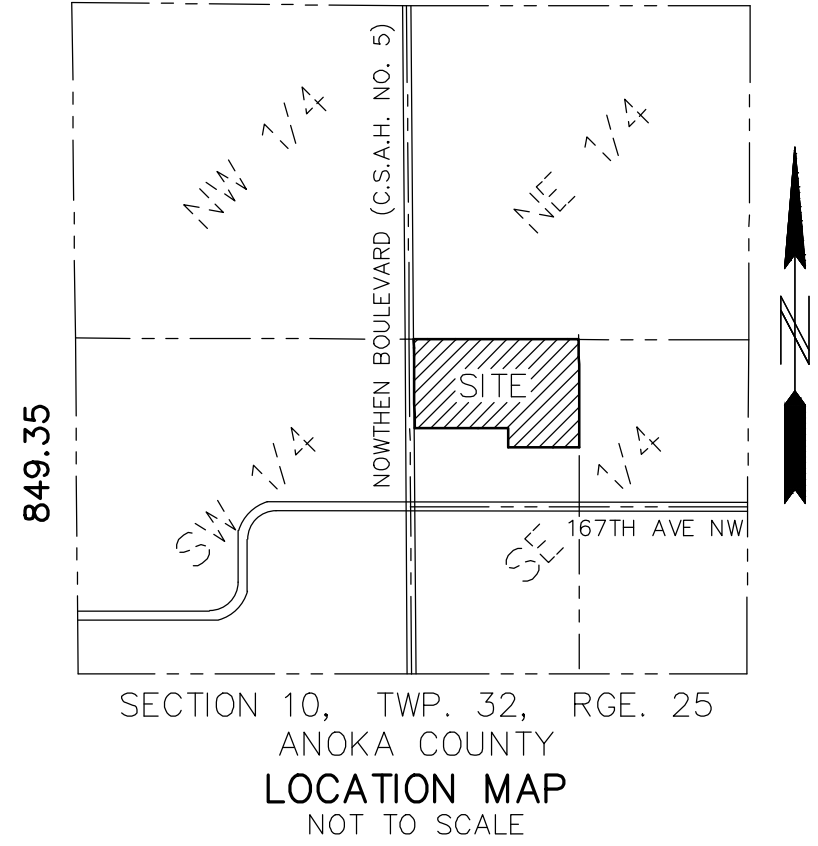
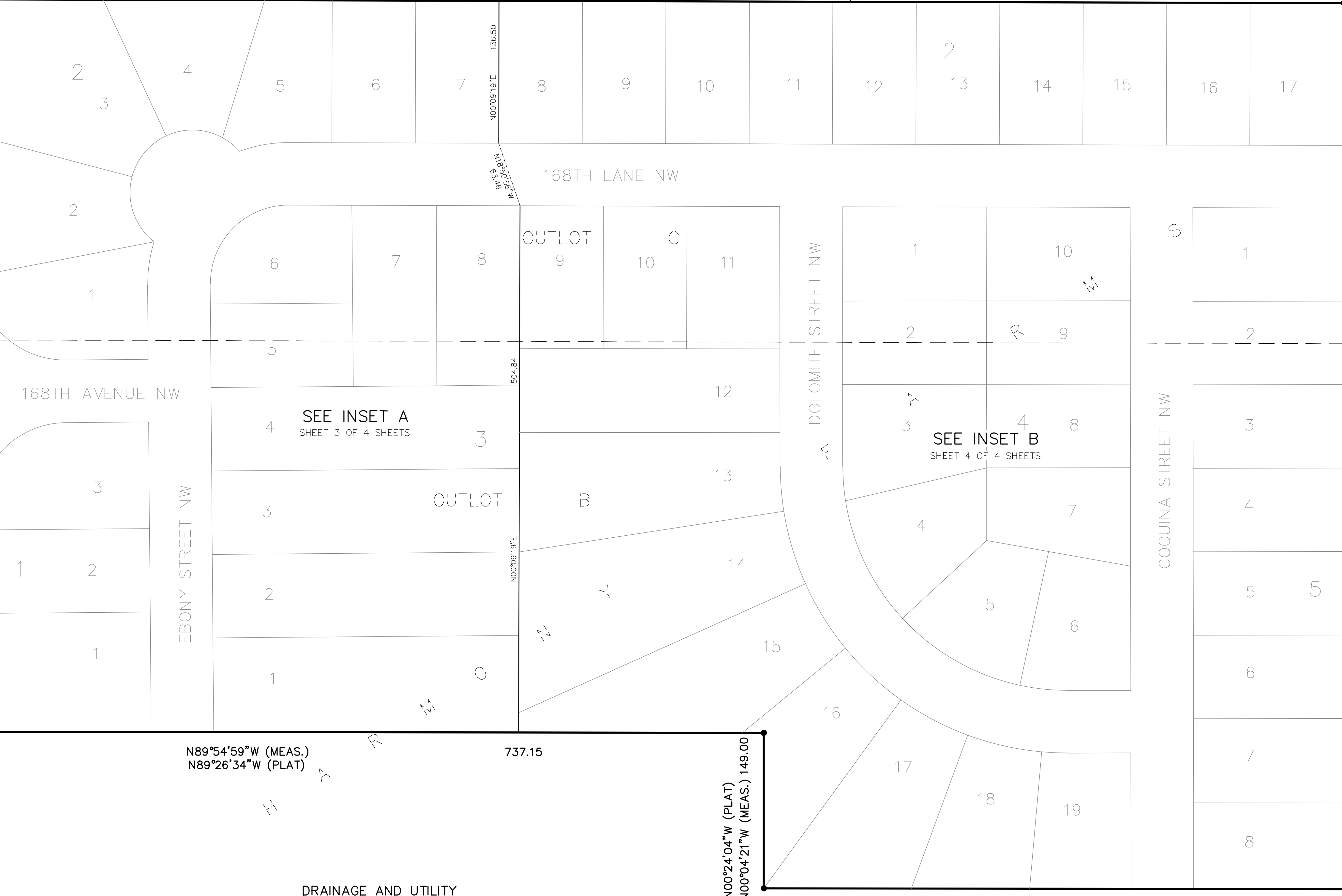
72.77
S01°29'26"E (MEAS.)
S01°01'01"E (PLAT)

52.75
R=2924.79
Δ=01°02'00"

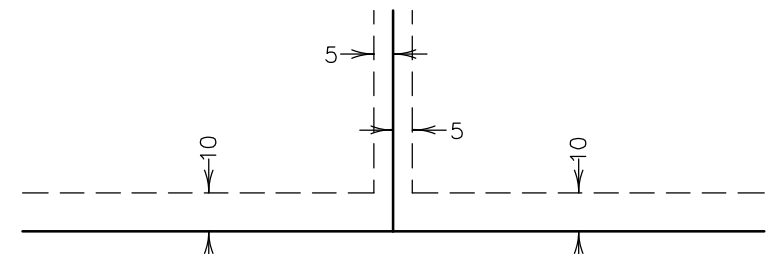
BROOK FIELD
FIRST ADDITION

COUNTY STATE AID HIGHWAY NO. 5
(NOWTHIAN BLVD N.W.)

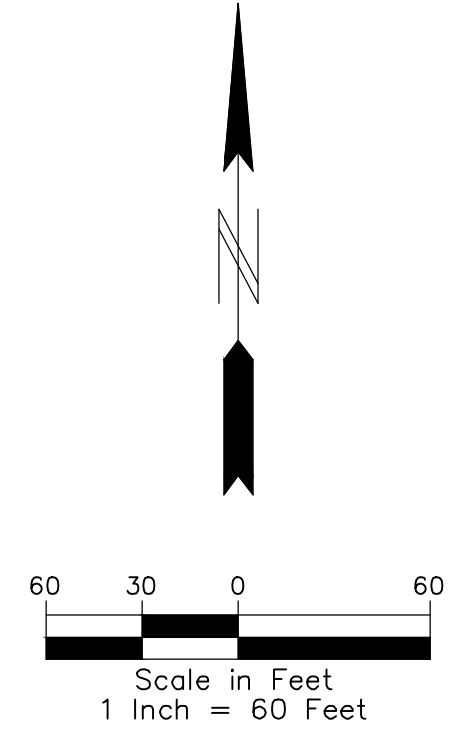
S00°27'26"E (MEAS.)
S00°00'59"E (PLAT)



DRAINAGE AND UTILITY
EASEMENTS ARE SHOWN THUS:



Being 5 feet in width, and adjoining lot lines
unless otherwise indicated, and 10 feet in width
and adjoining right of way and rear lot lines
unless otherwise indicated on the plat.



THE ORIENTATION OF THIS BEARING SYSTEM IS BASED ON
THE NORTH LINE OF OUTLOT C, HARMONY FARMS, WHICH IS
ASSUMED TO HAVE A BEARING OF SOUTH 89°50'41" EAST.

- DENOTES FOUND CAST IRON MONUMENT
- DENOTES 1/2 INCH BY 14 INCH IRON PIPE MONUMENT SET AND MARKED BY LICENSE NUMBER 42299, OR WILL BE SET IN ACCORDANCE WITH MS SECTION 505.021, SUBD. 10.
- DENOTES FOUND 1/2 INCH IRON MONUMENT MARKED BY LICENSE NUMBER 42299 UNLESS OTHERWISE NOTED.

