

STATEMENT OF ESTIMATED QUANTITIES								
ITEM NO.	MNDOT SPEC NO.	ITEM	NOTES	UNIT	TOTAL QUANTITY	RAMSEY PARKWAY QUANTITIES	ZEOLITE STREET NW QUANTITIES	CENTER STREET QUANTITIES
1	2021.501	MOBILIZATION		LUMP SUM	1	0.67	0.17	0.16
2	2104.502	REMOVE HYDRANT		EACH	2		1	1
3	2104.502	REMOVE GATE VALVE & BOX		EACH	1		1	
4	2104.502	REMOVE DRAINAGE STRUCTURE		EACH	7	2		5
5	2104.502	REMOVE PIPE APRON		EACH	2		2	
6	2104.503	REMOVE PIPE SEWERS (STORM)		LIN FT	742	175	100	467
7	2104.503	REMOVE CURB & GUTTER		LIN FT	2116	251	15	1850
8	2104.503	REMOVE BITUMINOUS CURB		LIN FT	215			215
9	2104.503	SAWING CONCRETE PAVEMENT (FULL DEPTH)		LIN FT	40		40	
10	2104.503	SAWING BIT PAVEMENT (FULL DEPTH)		LIN FT	904	247	125	532
11	2104.503	REMOVE WATER MAIN		LIN FT	26		26	
12	2104.504	REMOVE CONCRETE PAVEMENT		SQ YD	25		25	
13	2104.504	REMOVE BITUMINOUS PAVEMENT		SQ YD	5090	160	580	4350
14	2106.507	EXCAVATION - COMMON (EV) (P)	1	CU YD	6080	2600	1350	2130
15	2106.507	COMMON EMBANKMENT (CV)	1	CU YD	5080	4170	300	610
16	2106.601	DEWATERING		LUMP SUM	1	1		
17	2108.504	GEOTEXTILE FABRIC TYPE 5		SQ YD	1170	1170		
18	2112.519	SUBGRADE PREPARATION		SQ YD	27820	14830	6320	6670
19	2123.610	STREET SWEEPER (WITH PICKUP BROOM)		HR	130	60	35	35
20	2130.523	WATER FOR DUST CONTROL		MGAL	2000	1000	500	500
21	2211.509	AGGREGATE BASE, CLASS 5 MODIFIED		TON	11060	6150	2440	2470
22	2232.504	MILL BITUMINOUS SURFACE (2")		SQ YD	1500			1500
23	2357.506	BITUMINOUS MATERIAL FOR TACK COAT		GAL	1350	700	300	350
24	2360.509	TYPE SP 9.5 WEARING COURSE MIX (3,C)		TON	2970	1480	660	830
25	2360.509	TYPE SP 12.5 NON WEARING COURSE MIX (3,C)		TON	4170	2220	980	970
26	2411.502	8" CONCRETE HEADWALL		EACH	2	2		
27	2451.507	COARSE FILTER AGGREGATE (CV)		CU YD	200	200		
28	2502.503	6" PERF PVC PIPE DRAIN		LIN FT	750	750		
29	2503.503	8" PVC PIPE SEWER		LIN FT	410	360	50	
30	2503.503	10" PVC PIPE SEWER		LIN FT	343	343		
31	2503.503	12" RC PIPE SEWER 3006 CLASS V		LIN FT	216	73	98	45
32	2503.503	15" RC PIPE SEWER 3006 CLASS V		LIN FT	580	93	442	45
33	2503.503	18" RC PIPE SEWER 3006 CLASS III		LIN FT	413	413		
34	2503.503	24" RC PIPE SEWER 3006 CLASS III		LIN FT	439			439
35	2503.503	36" RC PIPE SEWER 3006 CLASS III		LIN FT	616	400	216	
36	2503.503	42" RC PIPE SEWER 3006 CLASS III		LIN FT	166	166		
37	2503.602	CONNECT TO EXISTING SANITARY SEWER		EACH	2	1	1	
38	2503.602	CONNECT TO EXISTING STORM SEWER		EACH	9	3	4	2
39	2503.602	PLUG FILL & ABANDON PIPE SEWER		LIN FT	80	80		
40	2503.603	CLEAN & TELEVIEW PIPE SEWER		LIN FT	3933	2598	806	529
41	2503.608	DUCTILE IRON FITTINGS		POUND	3543	3241	151	151
42	2504.602	CONNECT TO EXISTING WATER MAIN (WET TAP)		EACH	2		1	1
43	2504.602	CONNECT TO EXISTING WATER MAIN		EACH	6	6		
44	2504.602	6" GATE VALVE & BOX		EACH	5	5		
45	2504.602	8" GATE VALVE & BOX		EACH	5	3	1	1
46	2504.602	12" GATE VALVE & BOX		EACH	6	6		
47	2504.602	HYDRANT		EACH	7	5	2	
48	2504.602	WATERMAIN OFFSET		EACH	3	3		
49	2504.603	6" WATER MAIN DUCTILE IRON CL 53		LIN FT	208	208		
50	2504.603	8" WATER MAIN DUCTILE IRON CL 52		LIN FT	315	230	35	50
51	2504.603	12" WATER MAIN DUCTILE IRON CL 52		LIN FT	1800	1800		
52	2504.604	4" WATERMAIN INSULATION		SQ YD	50	50		
53	2506.502	ADJUST FRAME & RING CASTING		EACH	9	4	1	4
54	2506.502	CASTING ASSEMBLY (SANITARY SEWER)		EACH	2	2		
55	2506.502	CASTING ASSEMBLY (STORM SEWER)		EACH	35	20	7	8
56	2506.603	CONSTRUCT SANITARY SEWER MANHOLE		LIN FT	54	39.6	14	
57	2506.603	CONSTRUCT DRAINAGE STRUCTURE DESIGN SPEC 1 (2'X3')		LIN FT	38	13.8	16.2	7.9
58	2506.603	CONSTRUCT DRAINAGE STRUCTURE DES 48-4020		LIN FT	56	41.2	8.3	6.7
59	2506.603	CONSTRUCT DRAINAGE STRUCTURE DES 60-4020		LIN FT	47	25.6		21.5
60	2506.603	CONSTRUCT DRAINAGE STRUCTURE DES 72-4020		LIN FT	6			5.7
61	2506.603	CONSTRUCT DRAINAGE STRUCTURE DES 84-4020		LIN FT	11	5.6	5.4	
62	2506.603	CONSTRUCT DRAINAGE STRUCTURE DES 60-4020 WITH 4' SUMP		LIN FT	11	10.8		
63	2506.603	CONSTRUCT DRAINAGE STRUCTURE DES 84-4020 WITH 4' SUMP		LIN FT	22	11.3		10.6
64	2521.518	6" CONCRETE WALK		SQ FT	54700	39150	9700	5850
65	2531.503	CONCRETE CURB & GUTTER DESIGN B618		LIN FT	10350	5300	2250	2800

STATEMENT OF ESTIMATED QUANTITIES								
ITEM NO.	MNDOT SPEC NO.	ITEM	NOTES	UNIT	TOTAL QUANTITY	RAMSEY PARKWAY QUANTITIES	ZEOLITE STREET NW QUANTITIES	CENTER STREET QUANTITIES
66	2531.503	CONCRETE CURB & GUTTER DESIGN SPECIAL (RIBBON)		LIN FT	1700	1700		
67	2531.503	4" CONCRETE MEDIAN		SQ FT	815	815		
68	2531.504	7" CONCRETE PAVEMENT	3	SQ FT	1317	1112		205
69	2531.504	8" CONCRETE DRIVEWAY PAVEMENT		SQ FT	2950	700	2250	
70	2531.602	CONCRETE MEDIAN NOSE SPECIAL		EACH	2	1		1
71	2531.604	7" CONCRETE VALLEY GUTTER		SQ FT	305			305
72	2531.618	TRUNCATED DOMES		SQ FT	564	500	64	
73	2563.601	TRAFFIC CONTROL		LUMP SUM	1	0.67	0.17	0.16
74	2573.501	STABILIZED CONSTRUCTION EXIT		EACH	6	2	2	2
75	2573.501	STORM DRAIN INLET PROTECTION		EACH	45	20	7	18
76	2573.503	SILT FENCE, TYPE MS		LIN FT	2850	1400	850	600
77	2574.507	FILTER TOPSOIL BORROW (LV)		CU YD	500	500		
78	2574.507	COMMON TOPSOIL BORROW	2	CU YD	2320	740	450	1130
79	2575.505	SEEDING		SQ YD	13840	4400	2670	6770
80	2575.508	SEED MIXTURE 25-121		POUND	190	60	40	90
81	2575.504	SODDING TYPE NATIVE		SQ YD	1250	1250		
82	2575.508	HYDRAULIC BONDED FIBER MATRIX		POUND	13840	4400	2670	6770
83	2574.508	FERTILIZER TYPE 3		POUND	857	272	165	420
84	2582.503	4" SOLID LINE MULTI COMP		LIN FT	9378	4948	2850	1580
85	2582.503	4" BROKEN LINE MULTI COMP		LIN FT	327		300	27
86	2582.503	4" DOTTED LINE MULTI COMP		LIN FT	75			75
87	2582.503	4" DBLE SOLID LINE MULTI COMP		LIN FT	1650		375	1275
88	2582.503	6" SOLID LINE MULTI COMP		LIN FT	35	35		
89	2582.503	12" SOLID LINE MULTI COMP		LIN FT	270			270
90	2582.503	12" DOTTED LINE MULTI COMP		LIN FT	10	10		
91	2582.518	CROSSWALK MULTI COMP		SQ FT	2040	2040		
92	2582.518	PAVEMENT MESSAGE MULTI COMP		SQ FT	314	18	201	95

STRUC NO.	SIZE	TYPE	DETAIL	CASTING ASSEMBLY TYPE	BUILD
1	42"	HEADWALL			
2	84.00"	CBMH	4' SUMP	R-3246R	11.3
3	60.00"	CBMH	STO-3	R-2560-E1	5.9
3A	48.00"	CBMH	STO-2	R-2560-E1	4.1
4	60.00"	CBMH	STO-3	R-3246R	7.2
5	84.00"	CBMH	STO-3	R-3246R	5.6
7	48.00"	CBMH	STO-3	R-3246R	8.5
8	48.00"	CBMH	STO-3	R-3246R	7.7
8A	2'X3'	CB	STO-1	R-3246R	6.1
10	36"	HEADWALL			
11	60.00"	CBMH	4' SUMP	R-3246R	10.8
12	60.00"	CBMH	STO-3	R-2560-E1	5.5
12A	48.00"	CBMH	STO-2	R-2560-E1	3.6
13	60.00"	CBMH	STO-3	R-3246R	7.1
14	2'X3'	CB	STO-1	R-3246R	4.6
15	84.00"	CBMH	STO-3	R-3246R	5.4
15A	2'X3'	CB	STO-1	R-3246R	3.9
15B	84.00"	CBMH	STO-3	R-3246R	6.6
16	48.00"	CBMH	STO-3	R-3246R	4.0
16A	2'X3'	CB	STO-1	R-3246R	3.8
17	48.00"	CBMH	STO-3	R-3246R	4.3
17A	2'X3'	CB	STO-1	R-3246R	4.0
18	48.00"	CBMH	STO-3	R-3246R	4.4
18A	2'X3'	CB	STO-1	R-3246R	4.0
19	48.00"	CBMH	STO-3	R-3246R	4.6
19A	48.00"	CBMH	STO-3	R-3246R	4.6
19B	48.00"	CBMH	STO-3	R-3246R	3.7
19C	2'X3'	CB	STO-1	R-3246R	3.7
20	60.00"	MH	STO-3	R-3246R	4.9
21	48.00"	CBMH	STO-3	R-3246R	6.7
22	2'X3'	CB	STO-1	R-3246R	4.0
23	60.00"	CBMH	STO-3	R-3246R	5.3
24	60.00"	CBMH	STO-3	R-3246R	5.2
25	72.00"	CBMH	STO-3	R-3246R	5.7
25A	2'X3'	CB	STO-1	R-3246R	3.9
26	60.00"	CBMH	STO-3	R-3246R	6.1

- NOTES:
- SITE MATERIALS WILL BE FULLY BALANCED, WITH NO IMPORT OR EXPORT OF COMMON EXCAVATION OR BORROW MATERIALS ANTICIPATED. THE PROJECT SITE CONTAINS SUFFICIENT MATERIALS AND SPACE TO ACHIEVE SUBGRADE SOIL BALANCE.
 - ALL COMMON TOPSOIL BORROW SHALL COME FROM ON SITE STOCKPILE.
 - MOTORCYCLE PARKING AREAS

© Bolton & Menk, Inc. 2024. All Rights Reserved. P:\Projects\2024\240013\240013.dwg 4/10/2024 4:35:16 PM

I HEREBY CERTIFY THAT THIS PLAN, SPECIFICATION, OR REPORT WAS PREPARED BY ME OR UNDER MY DIRECT SUPERVISION AND THAT I AM A DULY LICENSED PROFESSIONAL ENGINEER UNDER THE LAWS OF THE STATE OF MINNESOTA.

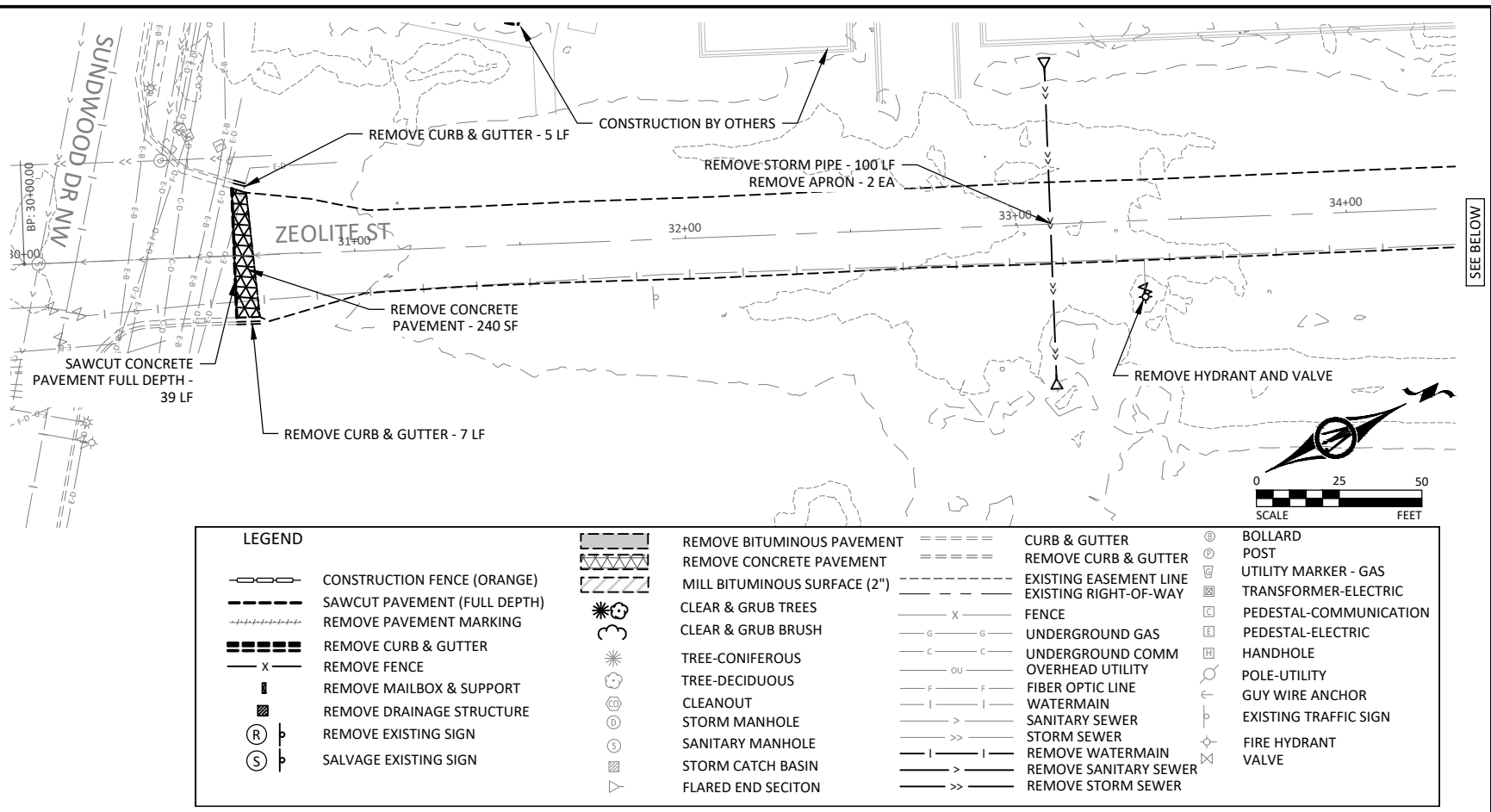
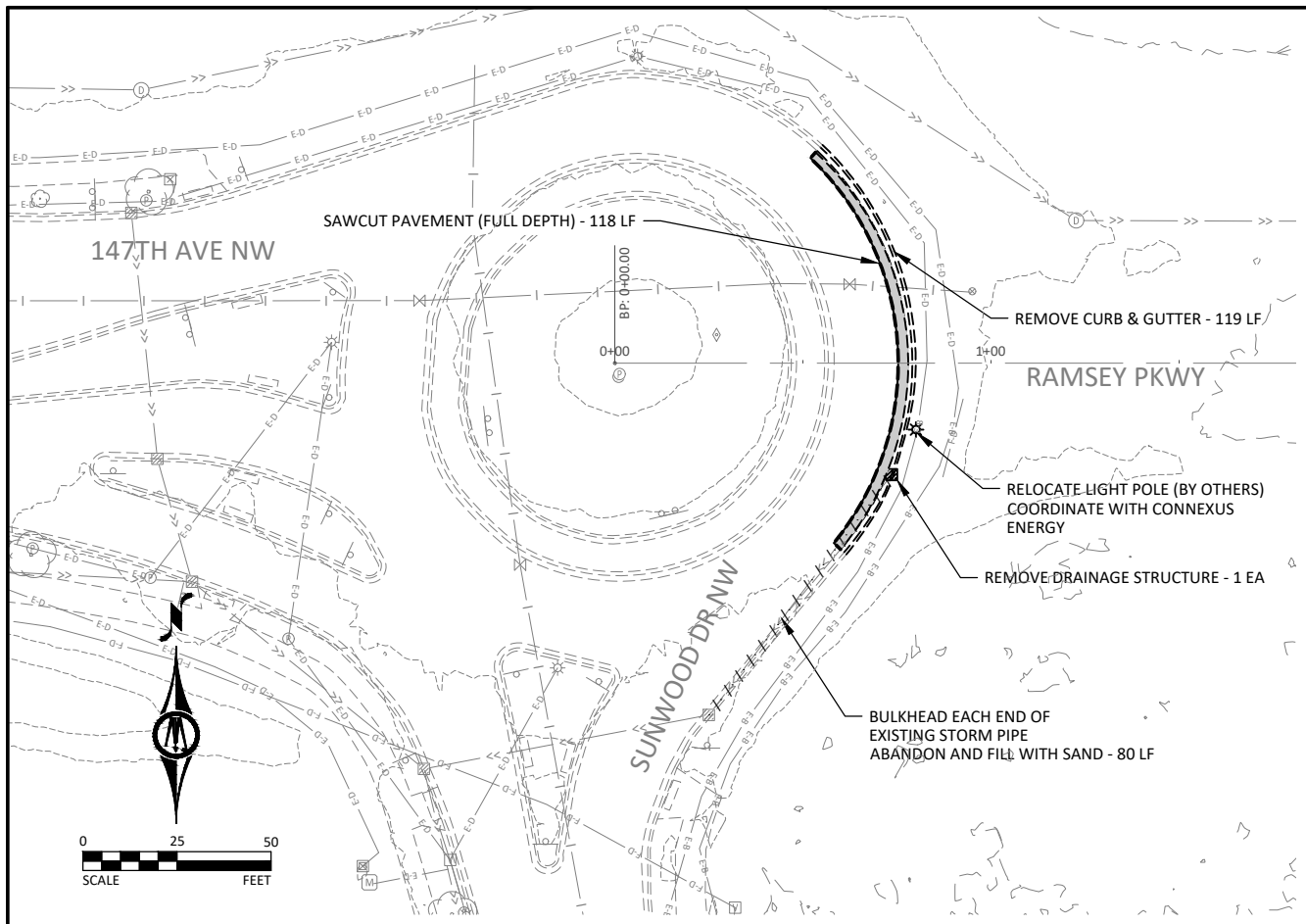
Kevin P. Kiehl
 KEVIN P. KIEHL, P.E.
 LIC. NO. 23211 DATE 02/13/2024



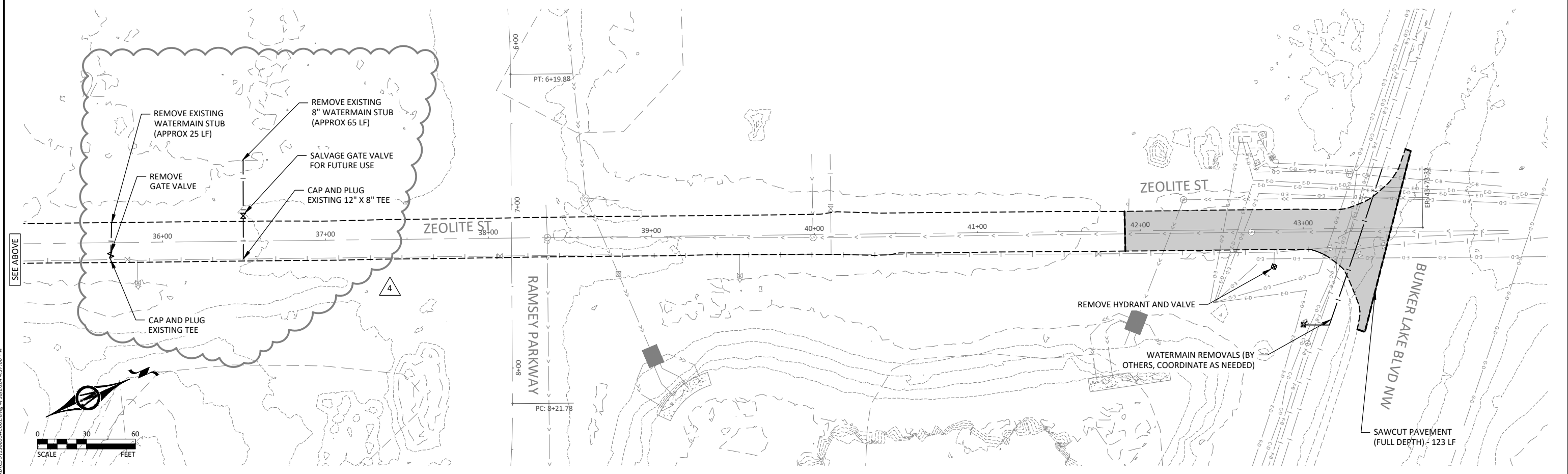
7533 SUNWOOD DR NW, SUITE 206
 RAMSEY, MINNESOTA 55303
 Phone: (763) 433-2851
 Email: Ramsey@bolton-menk.com
 www.bolton-menk.com



DESCRIPTION	DATE
DRAWN	02-13-2024
ADD 1	03-07-2024
ADD 2	03-08-2024
REV 1	04-09-2024
REV 2	04-09-2024



LEGEND	
	CONSTRUCTION FENCE (ORANGE)
	SAWCUT PAVEMENT (FULL DEPTH)
	REMOVE PAVEMENT MARKING
	REMOVE CURB & GUTTER
	REMOVE FENCE
	REMOVE MAILBOX & SUPPORT
	REMOVE DRAINAGE STRUCTURE
	REMOVE EXISTING SIGN
	SALVAGE EXISTING SIGN
	REMOVE BITUMINOUS PAVEMENT
	REMOVE CONCRETE PAVEMENT
	MILL BITUMINOUS SURFACE (2")
	CLEAR & GRUB TREES
	CLEAR & GRUB BRUSH
	TREE-CONIFEROUS
	TREE-DECIDUOUS
	CLEANOUT
	STORM MANHOLE
	SANITARY MANHOLE
	STORM CATCH BASIN
	FLARED END SECTION
	CURB & GUTTER
	REMOVE CURB & GUTTER
	EXISTING EASEMENT LINE
	EXISTING RIGHT-OF-WAY
	FENCE
	UNDERGROUND GAS
	UNDERGROUND COMM
	OVERHEAD UTILITY
	FIBER OPTIC LINE
	WATERMAIN
	SANITARY SEWER
	STORM SEWER
	REMOVE WATERMAIN
	REMOVE SANITARY SEWER
	REMOVE STORM SEWER
	BOLLARD POST
	UTILITY MARKER - GAS
	TRANSFORMER-ELECTRIC
	PEDESTAL-COMMUNICATION
	PEDESTAL-ELECTRIC
	HANDHOLE
	POLE-UTILITY
	GUY WIRE ANCHOR
	EXISTING TRAFFIC SIGN
	FIRE HYDRANT
	VALVE



© Bolton & Menk, Inc. 2024. All Rights Reserved.
 P:\Projects\113893\113893.dwg, 10/2024, 4:37:00 PM

I HEREBY CERTIFY THAT THIS PLAN, SPECIFICATION, OR REPORT WAS PREPARED BY ME OR UNDER MY DIRECT SUPERVISION AND THAT I AM A DULY LICENSED PROFESSIONAL ENGINEER UNDER THE LAWS OF THE STATE OF MINNESOTA.

 KEVIN P. KIEL, P.E.
 LIC. NO. 23211 DATE 02/13/2024



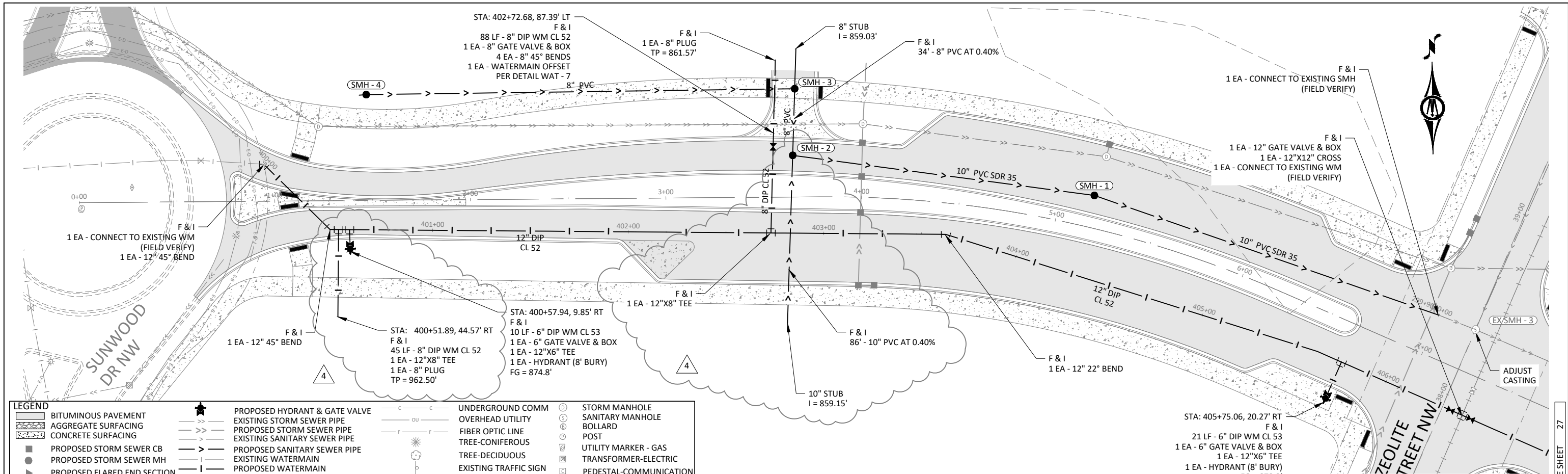
7533 SUNWOOD DR NW, SUITE 206
 RAMSEY, MINNESOTA 55303
 Phone: (763) 433-2851
 Email: Ramsey@bolton-menk.com
 www.bolton-menk.com



DESIGNED	NO.	ISSUED FOR	DATE
JDG/ZFL	0	BID	02-13-2024
DRAWN	1	ADD 1	03-07-2024
	2	ADD 2	03-08-2024
CHECKED	3	REV 1	04-09-2024
	4	REV 2	04-09-2024
CLIENT PROJ. NO.	23-19		

CITY OF RAMSEY, MINNESOTA
 THE COR INFRASTRUCTURE IMPROVEMENTS
 EXISTING CONDITIONS & REMOVALS
 RAMSEY PARKWAY - ZEOLITE STREET NW

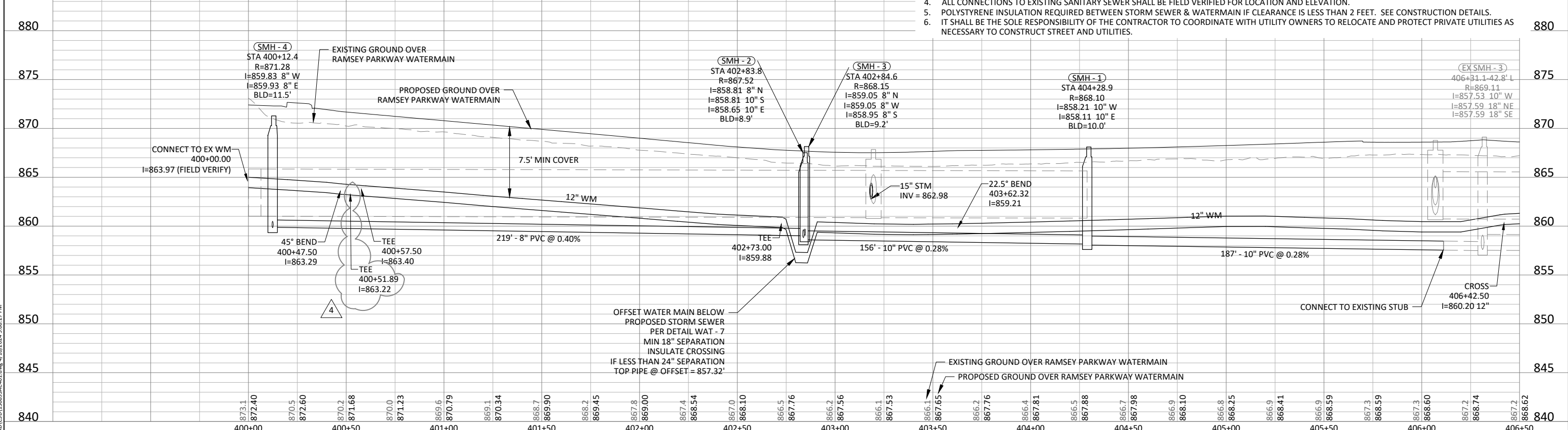
SHEET
 17
 OF
 60



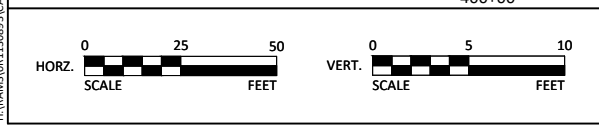
LEGEND	
	BITUMINOUS PAVEMENT
	AGGREGATE SURFACING
	CONCRETE SURFACING
	PROPOSED STORM SEWER CB
	PROPOSED STORM SEWER MH
	PROPOSED FLARED END SECTION
	RANDOM RIP RAP CL III
	PROPOSED SANITARY SEWER MH
	PROPOSED GATE VALVE
	PROPOSED HYDRANT & GATE VALVE
	EXISTING STORM SEWER PIPE
	PROPOSED STORM SEWER PIPE
	EXISTING SANITARY SEWER PIPE
	PROPOSED SANITARY SEWER PIPE
	EXISTING WATERMAIN
	PROPOSED WATERMAIN
	PAVEMENT MESSAGE MULTI-COMP
	SIGN INSTALLATION (BY OTHERS)
	CURB & GUTTER
	EXISTING CURB & GUTTER
	UNDERGROUND COMM
	OVERHEAD UTILITY
	FIBER OPTIC LINE
	TREE-CONIFEROUS
	TREE-DECIDUOUS
	EXISTING TRAFFIC SIGN
	FIRE HYDRANT
	VALVE
	CLEANOUT
	STORM CATCH BASIN
	FLARED END SECTION
	STORM MANHOLE
	SANITARY MANHOLE
	BOLLARD
	POST
	UTILITY MARKER - GAS
	TRANSFORMER-ELECTRIC
	PEDESTAL-COMMUNICATION
	PEDESTAL-ELECTRIC
	HANDHOLE
	POLE-UTILITY
	GUY WIRE ANCHOR

RAMSEY PARKWAY

- NOTES:
- SANITARY SEWER PIPE LENGTH AND GRADES ARE CALCULATED AND PAID USING THE DISTANCE FROM CENTER OF STRUCTURE TO CENTER OF STRUCTURE.
 - THE CONTRACTOR SHALL MAKE PROVISIONS TO PROTECT ALL SANITARY SEWER MANHOLES FROM DEBRIS AND SEDIMENT ENTERING THE SANITARY SEWER SYSTEM (INCIDENTAL).
 - ALL NEW SANITARY SEWER MAINS SHALL BE CONSTRUCTED STARTING AT THE LOWER END AND PROGRESSING UPSTREAM.
 - ALL CONNECTIONS TO EXISTING SANITARY SEWER SHALL BE FIELD VERIFIED FOR LOCATION AND ELEVATION.
 - POLYSTYRENE INSULATION REQUIRED BETWEEN STORM SEWER & WATERMAIN IF CLEARANCE IS LESS THAN 2 FEET. SEE CONSTRUCTION DETAILS.
 - IT SHALL BE THE SOLE RESPONSIBILITY OF THE CONTRACTOR TO COORDINATE WITH UTILITY OWNERS TO RELOCATE AND PROTECT PRIVATE UTILITIES AS NECESSARY TO CONSTRUCT STREET AND UTILITIES.



© Bolton & Menk, Inc. 2024. All Rights Reserved. P:\Projects\113893\CD\CD13893.dwg, 02/13/2024, 5:08:27 PM

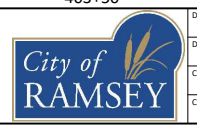


I HEREBY CERTIFY THAT THIS PLAN, SPECIFICATION, OR REPORT WAS PREPARED BY ME OR UNDER MY DIRECT SUPERVISION AND THAT I AM A DULY LICENSED PROFESSIONAL ENGINEER UNDER THE LAWS OF THE STATE OF MINNESOTA.

Kevin P. Kiehl
 KEVIN P. KIEHL, P.E.
 LIC. NO. 23211 DATE 02/13/2024



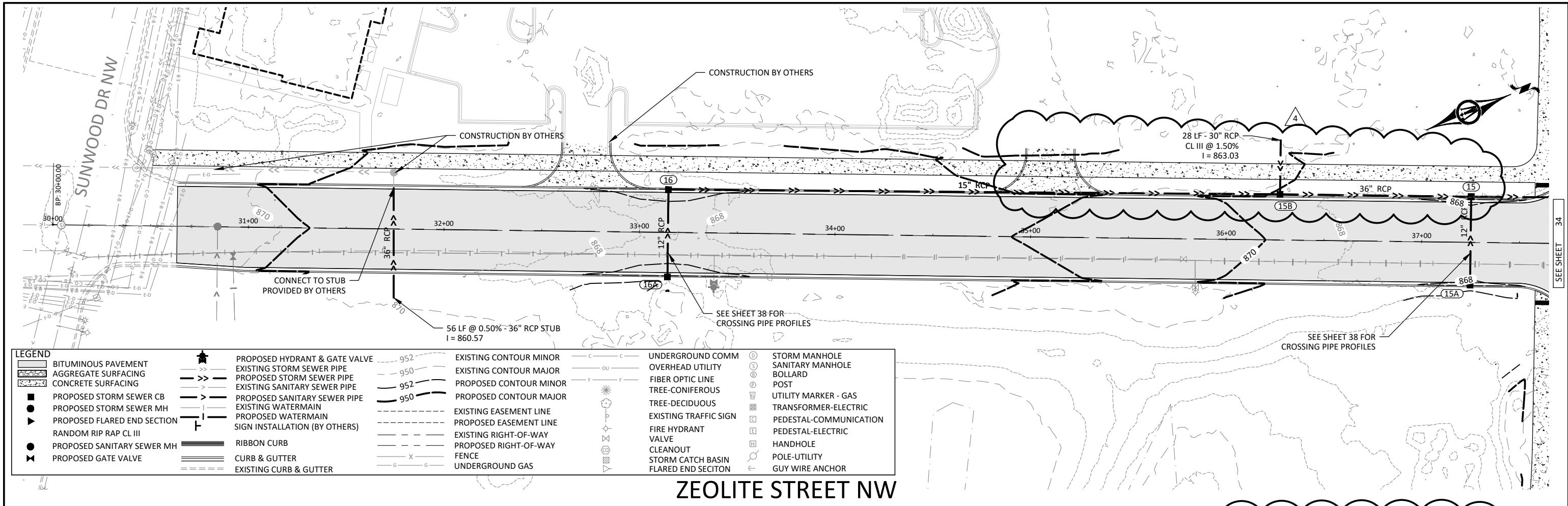
7533 SUNWOOD DR NW, SUITE 206
 RAMSEY, MINNESOTA 55303
 Phone: (763) 433-2851
 Email: Ramsey@bolton-menk.com
 www.bolton-menk.com



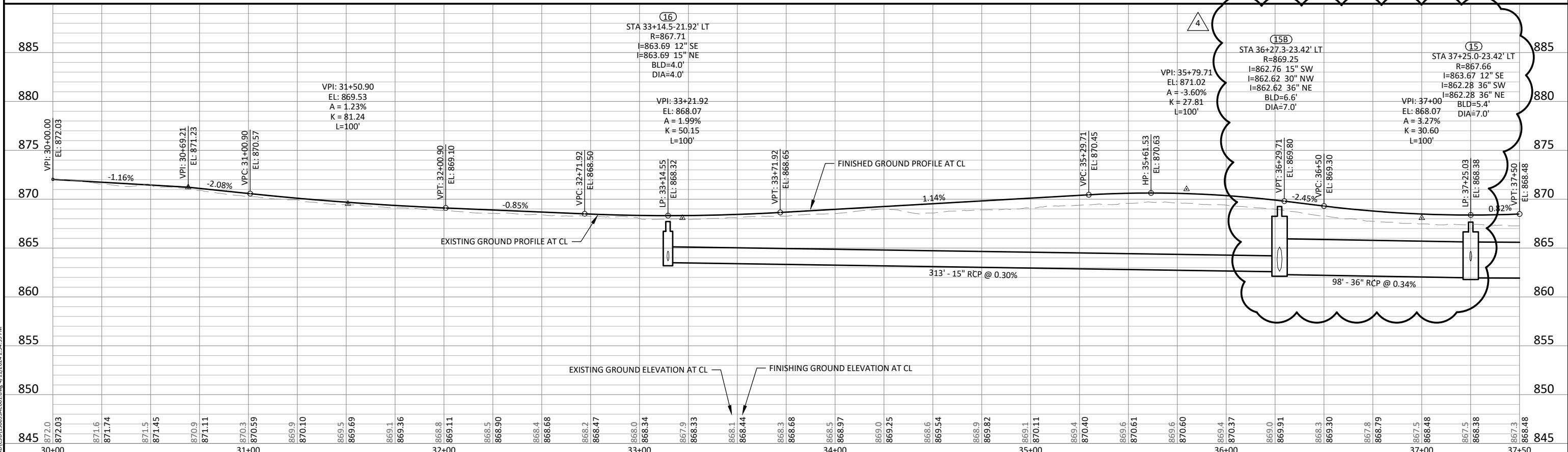
DESIGNED	NO.	ISSUED FOR	DATE
JDG/ZFL	0	BID	02-13-2024
	1	ADD 1	03-07-2024
	2	ADD 2	03-08-2024
CHECKED	3	REV 1	04-09-2024
	4	REV 2	04-09-2024

CITY OF RAMSEY, MINNESOTA
 THE COR INFRASTRUCTURE IMPROVEMENTS
 WATERMAIN & SANITARY SEWER - PLAN & PROFILE
 RAMSEY PARKWAY

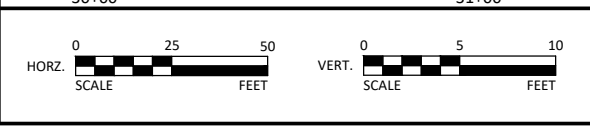
SHEET 26 OF 60



ZEOLITE STREET NW



© Bolton & Menk, Inc. 2024. All Rights Reserved. P:\Projects\113893\113893.dwg, 01/12/2024, 2:54:59 PM

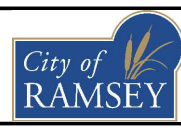


I HEREBY CERTIFY THAT THIS PLAN, SPECIFICATION, OR REPORT WAS PREPARED BY ME OR UNDER MY DIRECT SUPERVISION AND THAT I AM A DULY LICENSED PROFESSIONAL ENGINEER UNDER THE LAWS OF THE STATE OF MINNESOTA.

Kevin P. Kielb
 KEVIN P. KIELB, P.E.
 LIC. NO. 23211 DATE 02/13/2024



7533 SUNWOOD DR NW, SUITE 206
 RAMSEY, MINNESOTA 55303
 Phone: (763) 433-2851
 Email: Ramsey@bolton-menk.com
 www.bolton-menk.com



DESIGNED	NO.	ISSUED FOR	DATE
JDG/ZFL	0	BID	02-13-2024
	1	ADD 1	03-07-2024
	2	ADD 2	03-08-2024
	3	REV 1	04-09-2024
	4	REV 2	04-09-2024

CITY OF RAMSEY, MINNESOTA
 THE COR INFRASTRUCTURE IMPROVEMENTS
 STORM SEWER & STREET - PLAN & PROFILE
 ZEOLITE STREET NW

SHEET 33 OF 60