

# WATERFRONT VILLAGE

CITY OF RAMSEY  
COUNTY OF ANOKA  
SEC. 28, T. 32, R. 25

KNOW ALL PERSONS BY THESE PRESENTS: That the City of Ramsey, a Minnesota municipal corporation, owner of the following described property:

Outlot A, RAMSEY PROPERTIES ADDITION, Anoka County, Minnesota

Has caused the same to be surveyed and platted as WATERFRONT VILLAGE and does hereby dedicate to the public for public use the public ways and the drainage and utility easements as created on this plat.

In witness whereof said City of Ramsey, a Minnesota municipal corporation, has caused these presents to be signed by its proper officer this \_\_\_\_\_ day of \_\_\_\_\_, 20 \_\_\_\_\_.

City of Ramsey

By: \_\_\_\_\_ its Mayor  
Mark E. Kuzma

By: \_\_\_\_\_ its City Administrator  
Brian Hagen

STATE OF \_\_\_\_\_  
COUNTY OF \_\_\_\_\_

This instrument was acknowledged before me on \_\_\_\_\_ day of \_\_\_\_\_, 20 \_\_\_\_\_  
by Mark E. Kuzma, the Mayor of City of Ramsey, a Minnesota municipal corporation, on behalf of the company.

\_\_\_\_\_  
(Signature)  
\_\_\_\_\_  
(Print Name)  
\_\_\_\_\_  
County, \_\_\_\_\_  
My commission expires \_\_\_\_\_

STATE OF \_\_\_\_\_  
COUNTY OF \_\_\_\_\_

This instrument was acknowledged before me on \_\_\_\_\_ day of \_\_\_\_\_, 20 \_\_\_\_\_  
by Brian Hagen, the City Administrator of City of Ramsey, a Minnesota municipal corporation, on behalf of the company.

\_\_\_\_\_  
(Signature)  
\_\_\_\_\_  
(Print Name)  
\_\_\_\_\_  
County, \_\_\_\_\_  
My commission expires \_\_\_\_\_

I, Marcus F. Hampton do hereby certify that this plat was prepared by me or under my direct supervision; that I am a duly Licensed Land Surveyor in the State of Minnesota; that this plat is a correct representation of the boundary survey; that all mathematical data and labels are correctly designated on this plat; that all monuments depicted on this plat have been, or will be correctly set within one year; that all water boundaries and wet lands, as defined in Minnesota Statutes, Section 505.01, Subd. 3, as of the date of this certificate are shown and labeled on this plat; and all public ways are shown and labeled on this plat.

Dated this \_\_\_\_\_ day of \_\_\_\_\_, 20 \_\_\_\_\_

Marcus F. Hampton, Licensed Land Surveyor, Minnesota License No. 47481

STATE OF MINNESOTA  
COUNTY OF \_\_\_\_\_

This instrument was acknowledged before me on this \_\_\_\_\_ day of \_\_\_\_\_, 20 \_\_\_\_\_  
by Marcus F. Hampton.

\_\_\_\_\_  
(Signature)  
\_\_\_\_\_  
(Print Name)  
\_\_\_\_\_  
County, \_\_\_\_\_  
My commission expires \_\_\_\_\_

### CITY COUNCIL, CITY OF RAMSEY, MINNESOTA

This plat of WATERFRONT VILLAGE was approved and accepted by the City Council of the City of Ramsey, Minnesota at a regular meeting thereof held this \_\_\_\_\_ day of \_\_\_\_\_, 20 \_\_\_\_\_, and said plat is in compliance with the provisions of Minnesota Statutes, Section 505.03, Subd. 2.

By: \_\_\_\_\_ Mayor  
\_\_\_\_\_ Clerk

### ANOKA COUNTY SURVEYOR

I hereby certify that in accordance with Minnesota Statutes, Section 505.021, Subd. 11, this plat has been reviewed and approved this \_\_\_\_\_ day of \_\_\_\_\_, 20 \_\_\_\_\_.

David M. Ziegler, Anoka County Surveyor

### ANOKA COUNTY AUDITOR/TREASURER

Pursuant to Minnesota Statutes, Section 505.021, Subd. 9, taxes payable in the year 20 \_\_\_\_\_ on the land hereinbefore described have been paid. Also, pursuant to Minnesota Statutes, Section 272.12, there are no delinquent taxes and transfer entered this \_\_\_\_\_ day of \_\_\_\_\_, 20 \_\_\_\_\_.

By: \_\_\_\_\_ Property Tax Administrator  
By: \_\_\_\_\_ Deputy

### COUNTY RECORDER/REGISTRAR OF TITLES, COUNTY OF ANOKA, STATE OF MINNESOTA

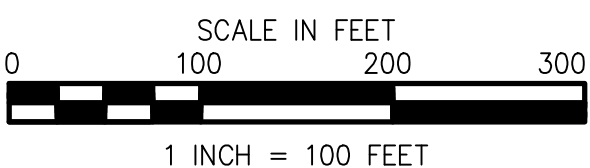
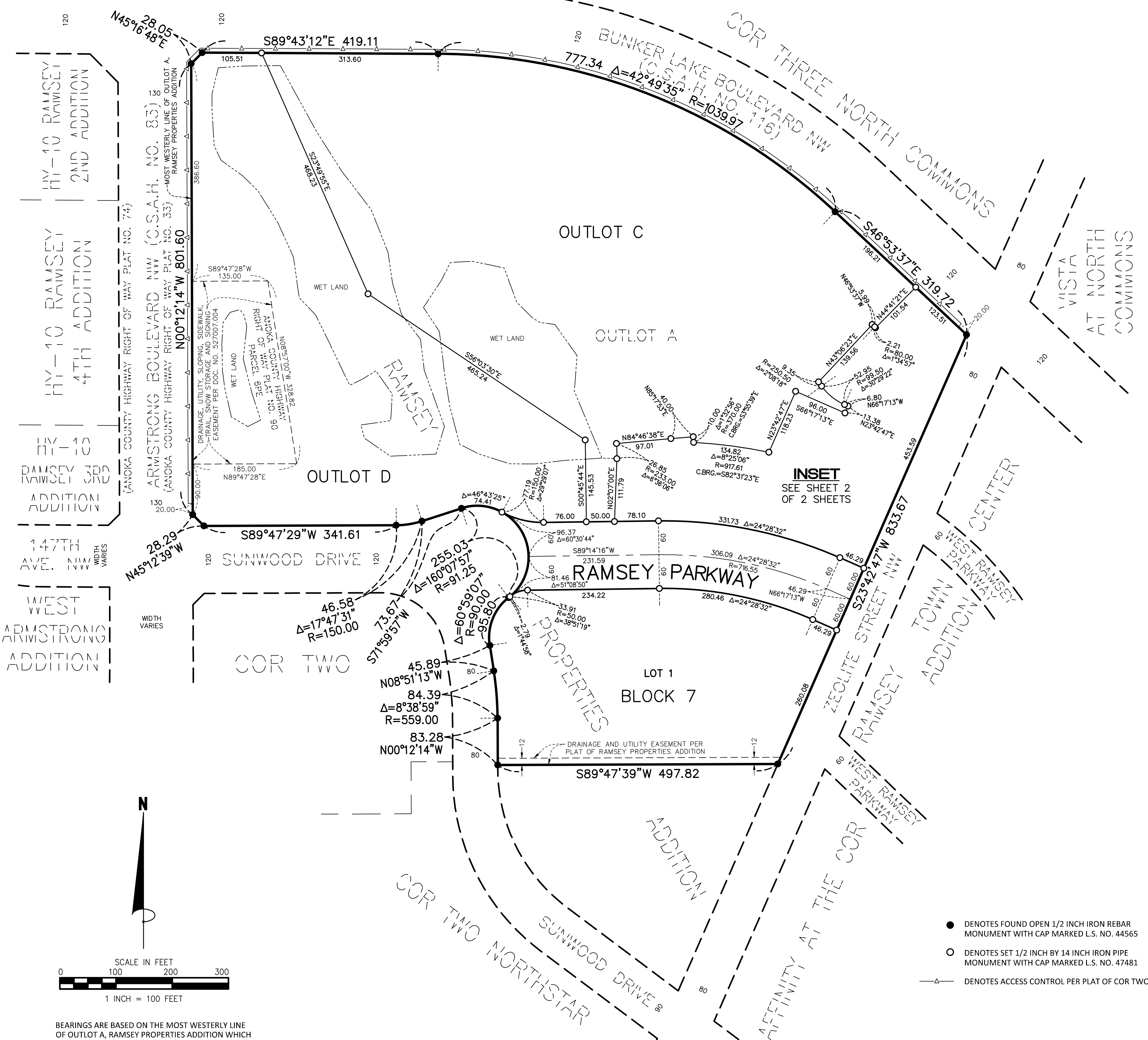
I hereby certify that this plat of WATERFRONT VILLAGE was filed in the office of the County Recorder/Registrar of Titles for public record on this \_\_\_\_\_ day of \_\_\_\_\_, 20 \_\_\_\_\_, at \_\_\_\_\_ o'clock \_\_\_\_\_ M. and was duly recorded as Document Number \_\_\_\_\_.

By: \_\_\_\_\_ County Recorder/Registrar of Titles  
By: \_\_\_\_\_ Deputy

ALPHA  
ALPHA  
DEVELOPMENT  
DEVELOPMENT

RAMSEY TOWN  
BISON STREET NW

COR THREE NORTH COMMONS  
148TH LANE NW



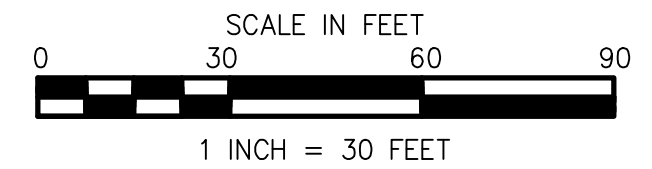
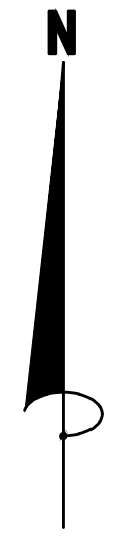
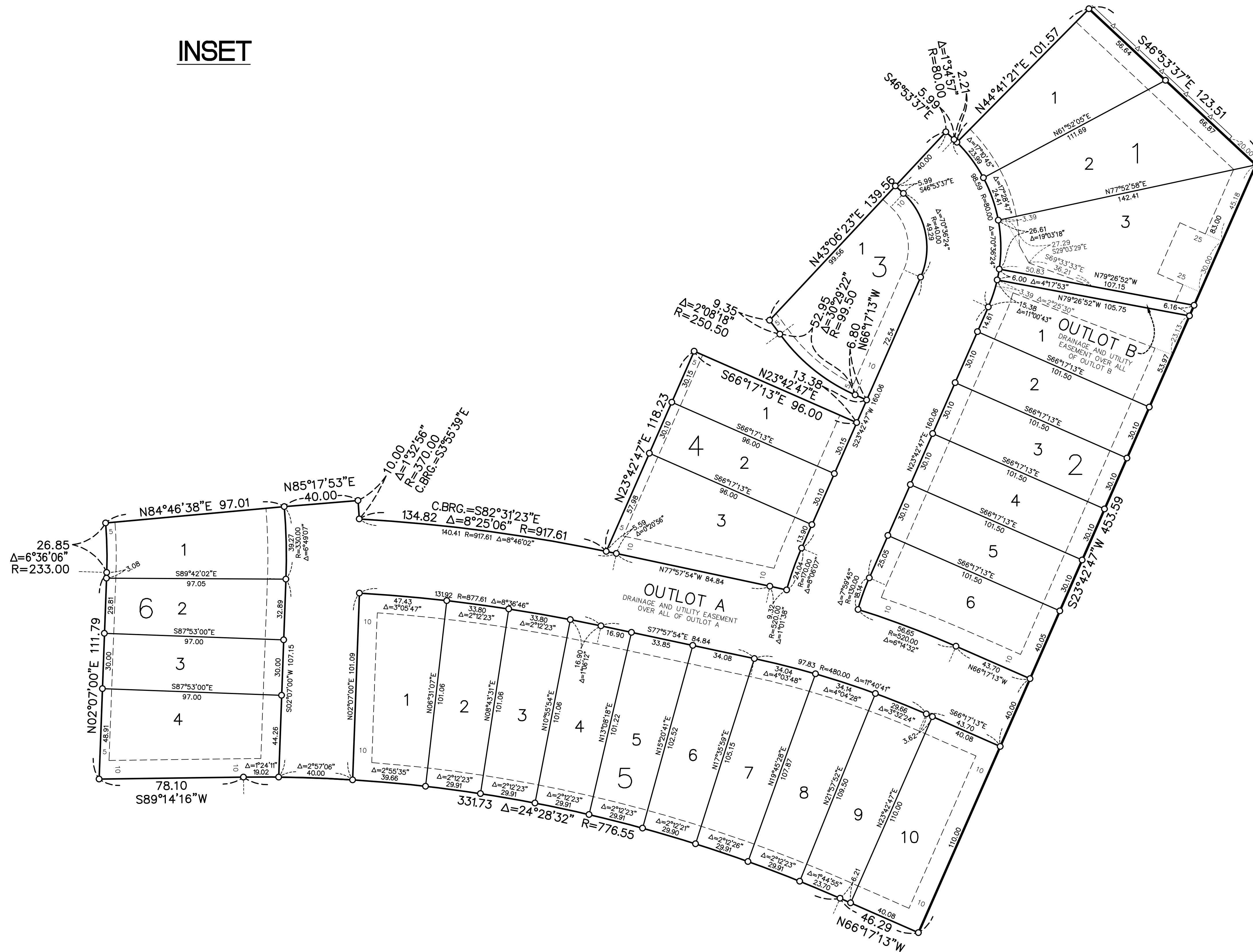
BEARINGS ARE BASED ON THE MOST WESTERLY LINE OF OUTLOT A, RAMSEY PROPERTIES ADDITION WHICH IS ASSUMED TO HAVE A BEARING OF N 00°12'14" W

- DENOTES FOUND OPEN 1/2 INCH IRON REBAR MONUMENT WITH CAP MARKED L.S. NO. 44565
- DENOTES SET 1/2 INCH BY 14 INCH IRON PIPE MONUMENT WITH CAP MARKED L.S. NO. 47481
- △— DENOTES ACCESS CONTROL PER PLAT OF COR TWO

# WATERFRONT VILLAGE

CITY OF RAMSEY  
COUNTY OF ANOKA  
SEC. 28, T. 32, R. 25

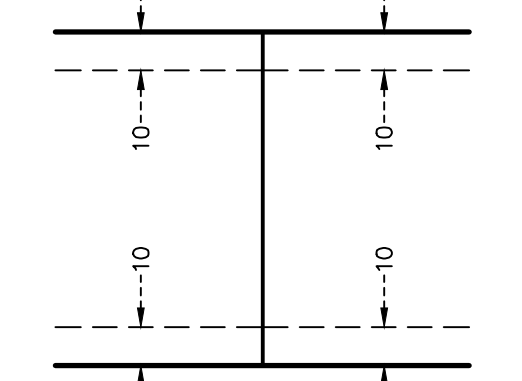
INSET



BEARINGS ARE BASED ON THE MOST WESTERLY LINE OF OUTLOT A, RAMSEY PROPERTIES ADDITION WHICH IS ASSUMED TO HAVE A BEARING OF N 00°12'14" W

- DENOTES FOUND OPEN 1/2 INCH IRON REBAR MONUMENT WITH CAP MARKED L.S. NO. 44565
- DENOTES SET 1/2 INCH BY 14 INCH IRON PIPE MONUMENT WITH CAP MARKED L.S. NO. 47481
- △ DENOTES ACCESS CONTROL PER PLAT OF COR TWO

DRAINAGE AND UTILITY EASEMENTS ARE SHOWN THUS:



DRAINAGE AND UTILITY EASEMENTS BEING 10 FEET IN WIDTH, UNLESS OTHERWISE INDICATED, ADJOINING FRONT AND REAR LOT LINES, AS SHOWN ON THIS PLAT.