

CITY OF RAMSEY 2024 MSA STREET OVERLAY IMPROVEMENTS

CITY IMPROVEMENT PROJECT NO. 24-06

GOVERNING SPECIFICATIONS

THE 2020 EDITION OF THE MINNESOTA DEPARTMENT OF TRANSPORTATION "STANDARD SPECIFICATIONS FOR CONSTRUCTION SHALL GOVERN.

ALL FEDERAL, STATE AND LOCAL LAWS, REGULATIONS AND ORDINANCES SHALL BE COMPLIED WITH IN THE CONSTRUCTION OF THIS PROJECT.

ALL TRAFFIC CONTROL DEVICES AND SIGNING SHALL CONFORM TO THE MINNESOTA MANUAL ON UNIFORM TRAFFIC CONTROL DEVICES, INCLUDING THE FIELD MANUAL FOR TEMPORARY TRAFFIC CONTROL ZONE LAYOUTS.

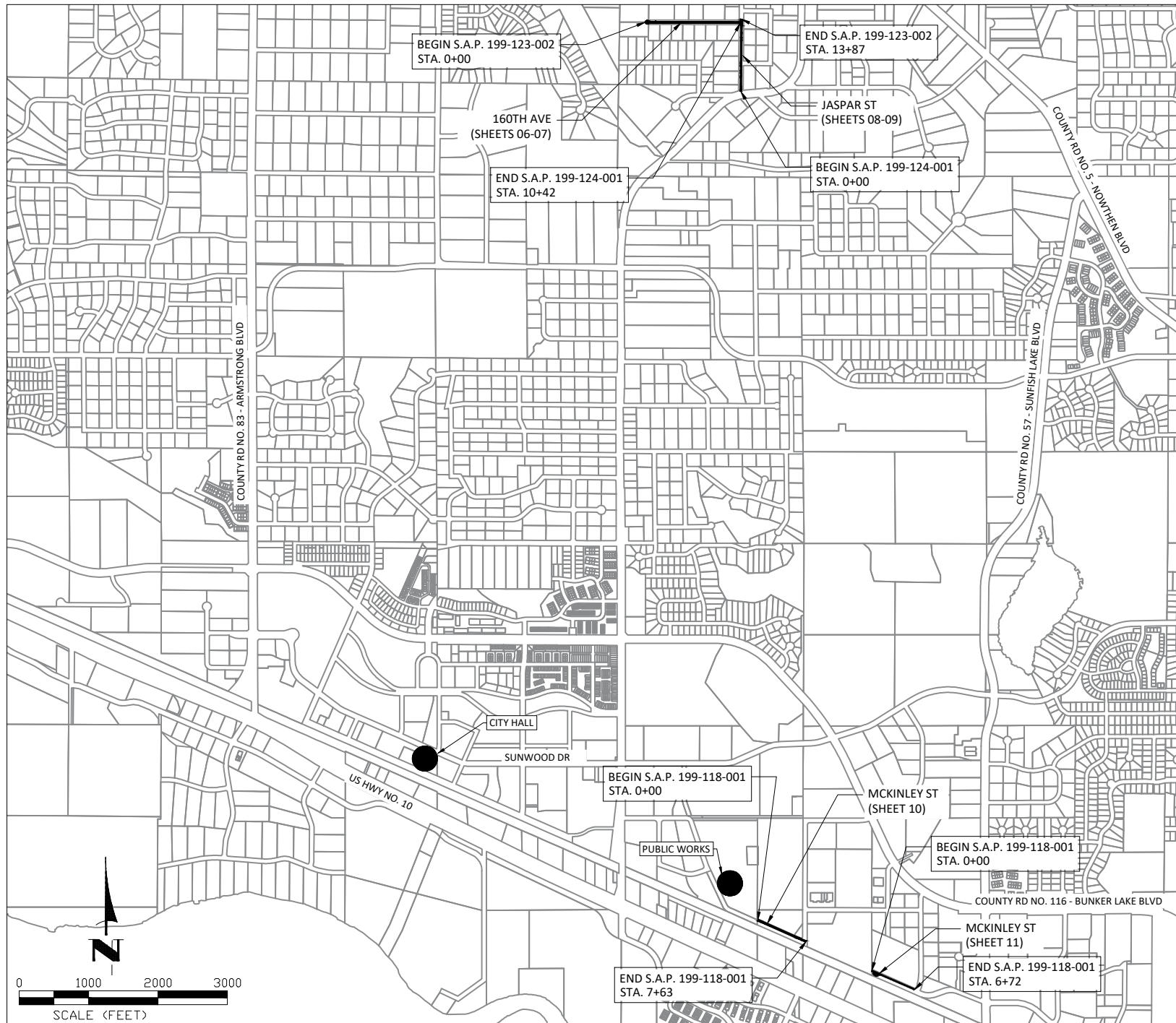
SHEET INDEX

THIS PLAN CONTAINS 11 SHEETS

SHEET NO.	DESCRIPTION
01	TITLE SHEET
02	STATEMENT OF ESTIMATED QUANTITIES
03	CITY DETAILS
04	TYPICAL SECTIONS
05	ALIGNMENT LAYOUT
06-07	MILL & OVERLAY - 160TH AVE
08-09	MILL & OVERLAY - JASPAR ST
10-11	MILL & OVERLAY - MCKINLEY ST

LEGEND

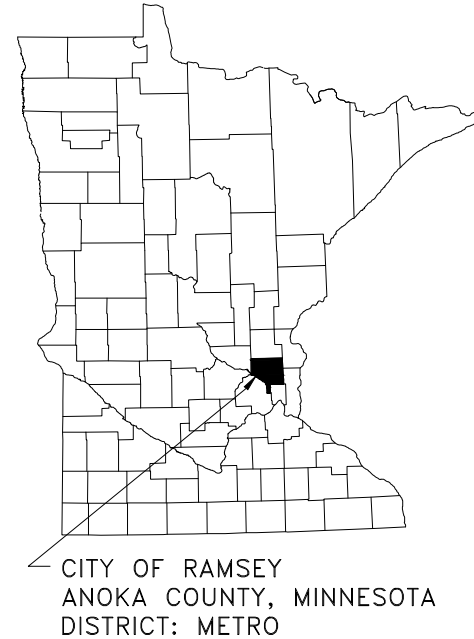
	SANITARY MANHOLE		Easement - Drainage & Utility
	STORM SEWER MANHOLE		Easement - Roadway
	CATCH BASIN MANHOLE		LOT LINE
	CATCH BASIN		ELECTRIC LINE
	CATCH BASIN - GROUT		ELECTRIC LINE - BURIED
	CATCH BASIN - RESET		ELECTRIC LINE - OVERHEAD
	FLARED END SECTION		GAS LINE
	CULVERT END SECTION		TELECOMMUNICATION LINE
	HYDRANT		TELECOMM - OVERHEAD
	VALVE		FIBER OPTIC LINE
	TREE - CONIFEROUS		TREE LINE
	TREE - DECIDUOUS		LANDSCAPE
	SHRUB		RETAINING WALL
	LIGHT POLE		FENCE
	SIGN		SILT FENCE
	MAILBOX		WATERMAIN
	PEDESTAL - TELECOM		SANITARY SEWER
	PEDESTAL - ELECTRIC		STORM SEWER
	HAND HOLE		DRAIN TILE
	DRIVE - BITUMINOUS		LANDSCAPE - ROCK
	DRIVE - CONCRETE		LANDSCAPE - MULCH
	DRIVE - GRAVEL		LANDSCAPE - RIP RAP
	CONCRETE WALK		PR. DRIVE - BITUMINOUS
	BITUMINOUS TRAIL		PR. DRIVE - CONCRETE
	REMOVE CONCRETE PAVE		PR. DRIVE - GRAVEL
	REMOVE GRAVEL SURFACE		PR. CONCRETE WALK
	MILL BIT PAVEMENT - TIE IN		PR. CONCRETE
	RECLAIM BIT PAVEMENT		RESTORATION AREA
	PAVEMENT PATCH		EROSION CONTROL BLANKET
	MILL BIT PAVEMENT		CONSTRUCTION EXIT
	BITUMINOUS PAVEMENT		EROSION CONTROL LOG
			DRAINAGE ARROW



S.A.P. 199-123-002 LOCATED ON 160TH LN FROM MSAS 124 ST TO THE CUL-DE-SAC TO THE WEST FROM SW 1/4 OF THE S 1/2 OF S15, T32, R25 TO SW 1/4 OF THE S 1/2 OF S15, T32, R25

S.A.P. 199-124-001 LOCATED ON JASPAR ST BETWEEN RAMSEY BLVD AND MSAS 123 FROM SW 1/4 OF THE S 1/2 OF S15, T32, R25 TO SW 1/4 OF THE S 1/2 OF S15, T32, R25

S.A.P. 199-118-001 LOCATED ON MCKINLEY ST FROM EBONY ST TO THE DEAD END TO THE WEST AND FROM AZURITE ST TO THE CUL-DE-SAC TO THE WEST FROM NW 1/4 OF S34, T32, R25 TO NE 1/4 OF S34, T32, R25



THE SUBSURFACE UTILITY INFORMATION IN THIS PLAN IS UTILITY QUALITY LEVEL D. THIS QUALITY LEVEL WAS DETERMINED ACCORDING TO THE GUIDELINES OF CI/ASCE 38-02, ENTITLED "STANDARD GUIDELINES FOR THE COLLECTION AND DEPICTION OF EXISTING SUBSURFACE UTILITY DATA."

NOTE: EXISTING UTILITY INFORMATION SHOWN ON THIS PLAN HAS BEEN PROVIDED BY THE UTILITY OWNER. THE CONTRACTOR SHALL FIELD VERIFY EXACT LOCATIONS PRIOR TO COMMENCING CONSTRUCTION AS REQUIRED BY STATE LAW. NOTIFY GOPHER STATE ONE CALL 1-800-252-1166 OR 651-454-0002



NO.	PROJECT	STA. TO STA.	GROSS LENGTH	BRIDGE LENGTH	NET LENGTH	NET LENGTH (MILES)	ADT (2024)	ADT (2044)	DESIGN ESAL	R VALUE	TON DESIGN	DESIGN SPEED	NUMBER OF LANES	WIDTH OF LANES	FUNCTIONAL CLASSIFICATION
1	S.A.P. 199-123-002 160TH LN	0+00 TO 13+87	1,387 FT	0 FT	1,387 FT	0.26 MI	120	132	14,000	60	10	30	2	12'	COLLECTOR
2	S.A.P. 199-124-001 JASPAR ST	0+00 TO 10+42	1,042 FT	0 FT	1,042 FT	0.20 MI	800	880	92,000	60	10	30	2	12.5'	COLLECTOR
3	S.A.P. 199-118-001 MCKINLEY ST	0+00 TO 7+63 0+00 TO 6+72	1,435 FT	0 FT	1,435 FT	0.27 MI	1,230	1,353	143,000	60	10	30	2	15.5'-16'	COLLECTOR

CITY OF RAMSEY
7550 SUNWOOD DRIVE
RAMSEY, MN 55303
(763) 427-1410 FAX (763) 433-9898

DATE	REVISION
SAP 199-123-002	
199-124-001	
199-118-001	

I hereby certify that this plan, specification, or report was prepared by me or under my direct supervision and that I am a duly Licensed Professional Engineer under the laws of the State of Minnesota.

JOE FERIANCEK, P.E. 57095 DATE XX/XX/XX
LIC. NO.

APPROVED: _____ DATE _____
CITY ENGINEER, CITY OF RAMSEY

DISTRICT STATE AID ENGINEER: REVIEWED FOR COMPLIANCE WITH STATE AID RULES/POLICY DATE _____

STATE AID ENGINEER: APPROVED FOR STATE AID FUNDING DATE _____

SHEET 01 OF 11 SHEETS

Jun 27, 2024 - 9:31am G:\Engineering\AutoCad Dwg\Projects N-Z\Overlays\24-06 2024 MSA Overlay Improvements\Plan Drawings\24-06 Title Sheet No. Alpacca.dwg