

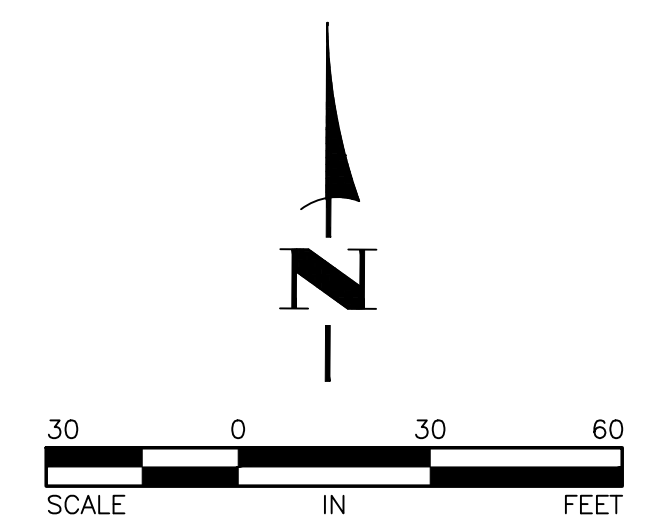
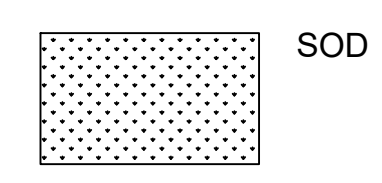
PLANT SCHEDULE

	QTY	CODE	SCIENTIFIC NAME/Common Name	SIZE	ROOT	REMARKS
OVERSTORY TREES						
	10	AF	ACER x FREEMANI 'JEFFERSRED'	2.5" cal	BB	space 35' o.c, straight trunk,
			AUTUMN BLAZE MAPLE			single leader, 7' clear bole
	11	CO	CELTIS OCCIDENTALIS	2.5" cal	BB	space 30' o.c, straight trunk,
			HACKBERRY			single leader, 7' clear bole
	5	QB	QUERCUS BICOLOR	2.5" CAL	BB	see plan for spacing, straight trunk,
			SWAMP WHITE OAK			single leader, 7' clear bole
ORNAMENTAL TREES						
	7	AG	AMELANCHIER x GRANDIFLORA 'AUT. BRI	6' HT	BB	see plan for spacing, clump form
			AUTUMN BRILLIANCE SERVICEBERRY			
	58	CC	CRATAEGUS CRUS-GALLI VAR. INERMIS	2" CAL	BB	space 15' o.c., straight trunk,
			THORNLESS HAWTHORN			single leader
	8	MS	MALUS 'PINK SPIRES'	2" CAL	BB	space 15' o.c., straight trunk,
			PINK SPIRES CRABAPPLE			single leader
EVERGREEN UPRIGHTS						
	11	TO	THUJA OCCIDENTALIS 'ART BOE'	#10	cont.	space 4' o.c.
			NORTH POLE ARBORVITAE			
SHRUBS (24" MIN. SHRUB SIZE AT TIME OF INSTALLATION)						
	27	AA	AMELANCHIER ALNIFOLIA 'REGENT'	#5	cont.	space 4' o.c.
			REGENT SERVICEBERRY			
	39	AM	ARONIA MELANOCARPA 'MORTON'	#5	cont.	space 3 to 4' o.c.
			IROQUOIS BEAUTY CHOKEBERRY			
	42	CS	CORNUS SERICEA 'FIREDANCE'	#5	cont.	space 4' o.c.
			FIREDANCE REDTWIG DOGWOOD			
	117	DL	DIERVILLA LONICERA	#5	cont.	space 3' o.c.
			DWARF BUSH HONEYSUCKLE			
	20	HP	HYDRANGEA PANICULATA 'JANE'	#5	cont.	space 4' o.c.
			LITTLE LIME HYDRANGEA			
	27	JV	JUNIPERUS VIRGINIANA 'GREY OWL'	#5	#5	space 4' o.c.
			GREY OWL JUNIPER			
	73	RA	RHUS AROMATICA 'GRO-LOW'	#5	cont.	space 4 to 4.5' o.c.
			GRO-LOW SUMAC			
	44	SB	SPIREA BETULIFOLIA 'TOR'	#5	cont.	space 3' o.c.
			TOR SPIREA			
	21	SP	SYRINGA PATULA 'MISS KIM'	#5	cont.	space 5' o.c.
			MISS KIM LILAC			
PERENNIALS						
	52	AB	AMSONIA 'BLUE ICE'	#1	cont.	space 1.5' o.c.
			BLUE ICE AMSONIA			
	53	GR	GERANIUM 'ROZANNE'	#1	cont.	space 2' o.c.
			ROZANNE GERANIUM			
	40	HH	HEMEROCALLIS 'HAPPY RETURNS'	#1	cont.	space 2' o.c.
			HAPPY RETURNS DAYLILY			
	45	HR	HOSTA ROYAL STANDARD	#1	cont.	space 2' o.c.
			ROYAL STANDARD HOSTA			
	89	NF	NEPETA FAASSENII 'WALKER'S LOW'	#1	cont.	space 2-2.5' o.c.
			WALKER'S LOW CATMINT			
	24	SS	SCHIZACHRIUM SCOPARIUM	#1	cont.	space 2' o.c.
			LITTLE BLUESTEM			
	44	SH	SPOROBOLUS HETEROLEPIS	#1	cont.	space 2' o.c.
			PRAIRIE DROPS EED			

NOTES:

- SEE SHEET L2 - L3 FOR PLANTING DETAILS & LANDSCAPE SPECIFICATIONS.
- ALL LANDSCAPE AREAS TO RECEIVE 4" OF TOPSOIL.
- CONTRACTOR TO PROVIDE LOAD TICKETS TO THE CITY FOR ALL TOPSOIL IMPORTED TO THE SITE PRIOR TO ANY LANDSCAPE WORK OCCURRING.
- ALL LANDSCAPED AREAS TO BE IRRIGATED, INCLUDING LANDSCAPING IN CITY RIGHT-OF-WAY ALONG SUNWOOD DRIVE, SAPPHIRE STREET, AND 145TH AVENUE. SEE SHEET L2 FOR IRRIGATION SPECS.

LEGEND



DATE	06.12.2024
PLAN REVISIONS PER CITY COMMENTS AND BASE CHANGES	

I hereby certify that this plan, specification, or report was prepared by me or under my direct supervision and that I am a duly Licensed Landscape Architect under the laws of the State of Minnesota. Name: Carmen Simonet
 Signature: _____
 License # 24236 Date: 03.09.2023

LANDSCAPE ARCHITECT:
 Carmen Simonet Design LLC
 354 Stonebridge Blvd., St. Paul, MN 55105
 (651) 695-0273 carmen@simonetdesign.com
 www.simonetdesign.com



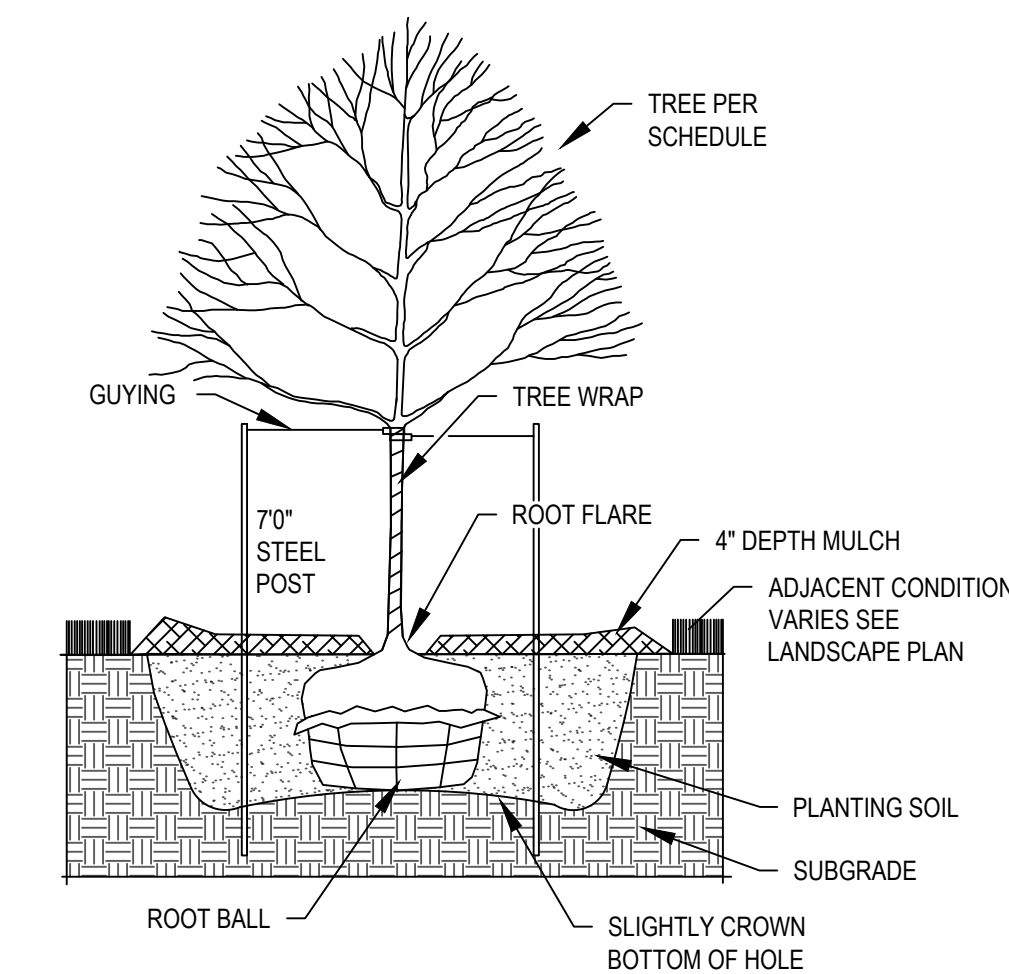
Hakanson Anderson
 Civil Engineers and Land Surveyors
 3601 Thurston Ave., Anoka, Minnesota 55303
 763-427-5860 FAX 763-427-0520
 www.hakanson-anderson.com

SKYLINE ON SUNWOOD

LANDSCAPE PLAN
 CITY OF RAMSEY, MINNESOTA

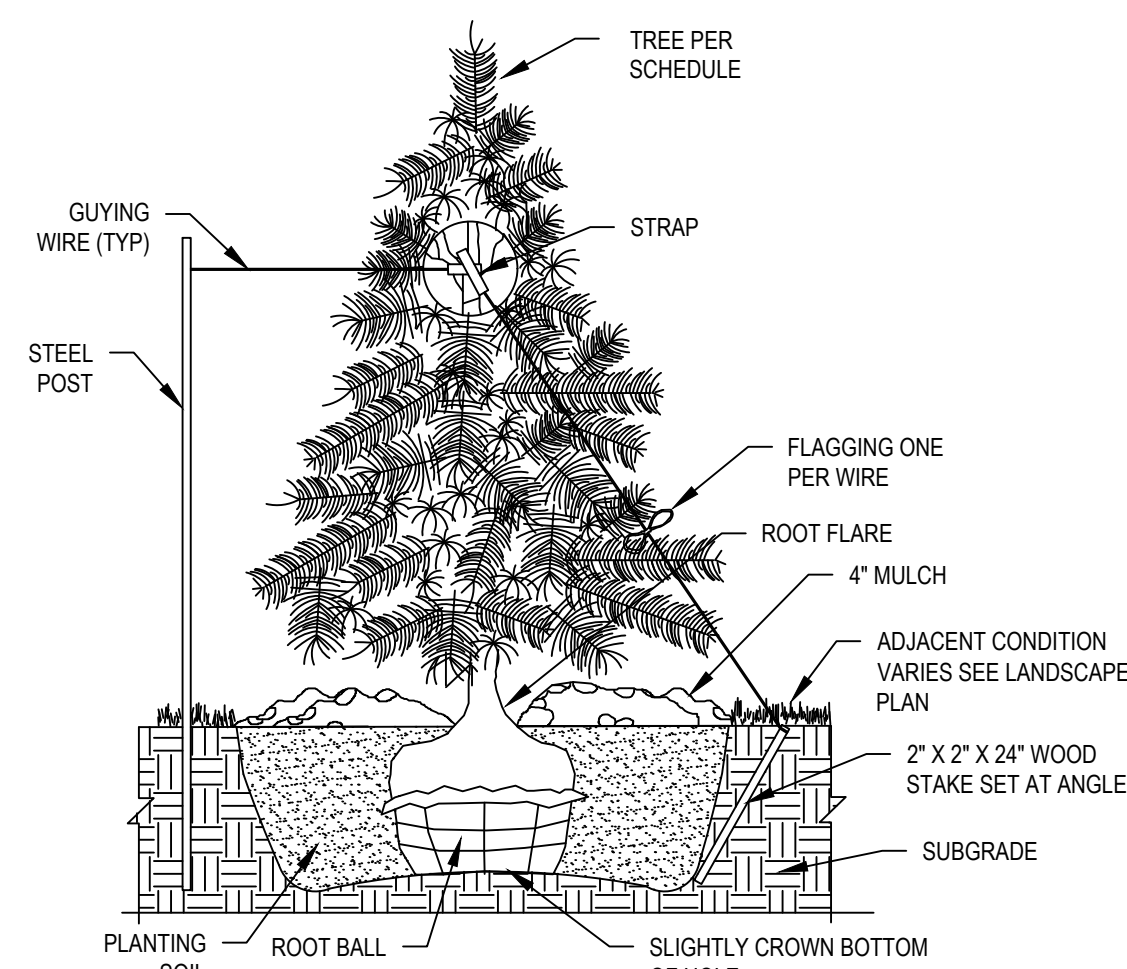
SHEET L1 OF L3 SHEETS

PLANTING DETAILS



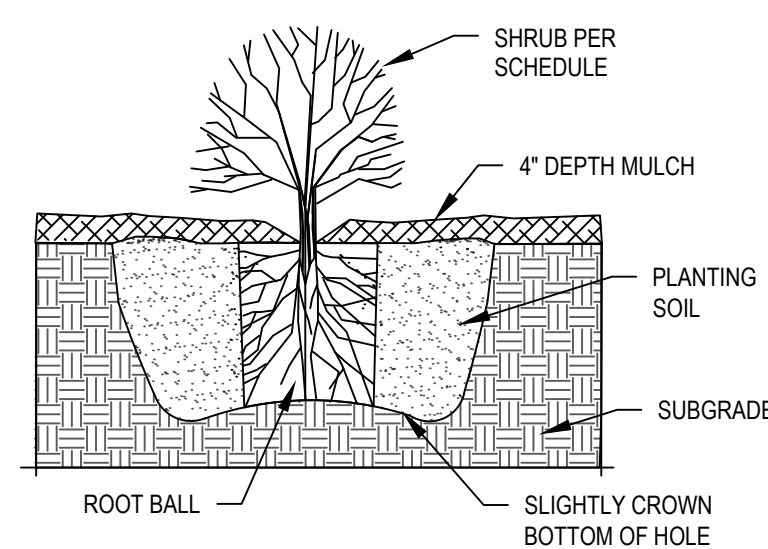
- NOTES:
1. Remove dead or damaged branches. Retain the natural form of the tree. Do not cut the leader.
 2. Width of planting hole: 18" min. larger than root ball, on all sides.
 3. Depth of hole: root flare to sit at or up to 2" above the top of the finished soil elevation. Leave soil undisturbed beneath the root ball.
 4. Scarify bottom and sides of hole prior to planting.
 5. Set plant on undisturbed soil or thoroughly compacted planting soil.
 6. Remove top 1/3 of the basket or the top two horizontal rings whichever is greater. Remove all burlap from top 1/3 of root ball. Remove all twine.
 7. Remove or correct stem girdling roots or reject plant.
 8. Slit remaining burlap at 6" intervals.
 9. Plumb & backfill with planting soil. Thoroughly water in tree within 2 hours to settle plants and fill voids.
 10. Backfill voids and water a second time.
 11. Place double shredded hardwood mulch within 48 hours of the second watering. No mulch to be in contact w/ trunk.
 12. Contractor is responsible for maintaining trees in a plumb position throughout the guarantee period. Stake trees if site conditions, such as soil and wind, prevent the trees from staying plumb. Use 16" x 1.5" polypropylene or polyethylene straps, attach to post with 10 gauge wire. Remove within one year.
 13. Wrap trunk in fall, remove wrap in spring.
 14. Refer to plan and specs. for additional information.

1 TREE PLANTING DETAIL
L2 NOT TO SCALE



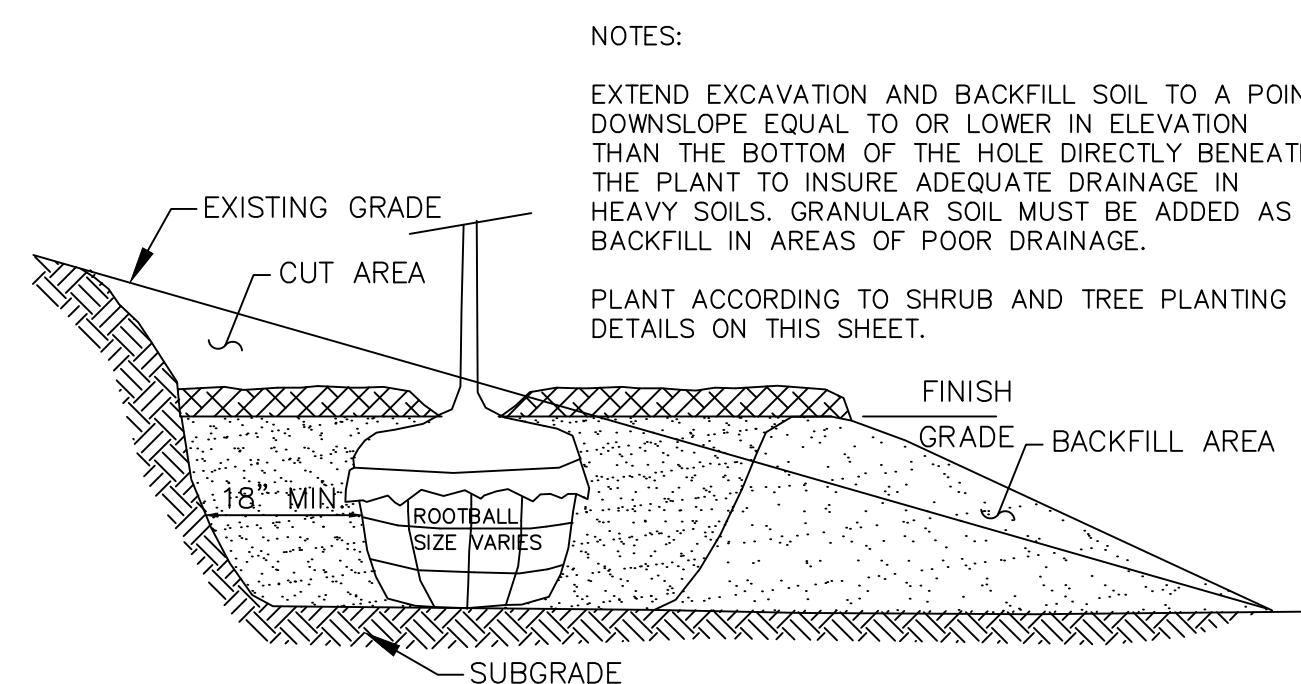
- NOTES:
1. Width of planting hole: 18" min. larger than root ball, on all sides.
 2. Depth of hole: root flare to sit at or up to 2" above the top of the finished soil elevation. Leave soil undisturbed beneath the root ball.
 3. Scarify bottom and sides of hole prior to planting.
 4. Set plant on undisturbed soil or thoroughly compacted planting soil.
 5. Remove top 1/3 of the basket or the top two horizontal rings whichever is greater. Remove all burlap from top 1/3 of root ball. Remove all twine.
 6. Remove or correct stem girdling roots or reject plant.
 7. Remove or correct stem girdling roots or reject plant.
 8. Slit remaining burlap at 6" intervals.
 9. Plumb & backfill with planting soil. Thoroughly water in tree within 2 hours to settle plant and fill voids.
 10. Backfill voids and water a second time.
 11. Place double shredded hardwood mulch within 48 hours of the second watering. No mulch to be in contact w/ trunk or branches.
 12. Two alternate methods of staking trees are illustrated in detail.
 13. Contractor is responsible for maintaining trees in a plumb position throughout the guarantee period. Stake trees if site conditions, such as soil and wind, prevent the trees from staying plumb. Use 16" x 1.5" polypropylene or polyethylene straps, attach to post or stake with 10 gauge wire. Remove within one year.
 14. Refer to plan and specs. for additional information.

2 EVERGREEN TREE PLANTING DETAIL
L2 NOT TO SCALE



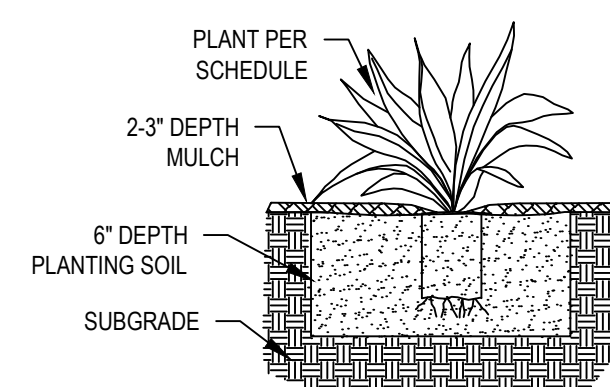
- NOTES:
1. Dig shrub hole 12" min. larger than container size, all sides.
 2. Scarify bottom and sides of hole prior to planting.
 3. Remove dead or damaged branches. Retain the natural form of the shrub.
 4. Hand loosen roots of containerized material. Score outside of soil mass to redirect circling fibrous roots.
 5. Set shrub on undisturbed soil or on thoroughly compacted planting soil. Install plant so the top of the root flare is at or up to 2" above the finished grade.
 6. Plumb and backfill with planting soil. Thoroughly water in shrub prior to placing mulch.
 7. Place double shredded hardwood mulch. Do not place any mulch on vegetation or in contact with trunk/stems.
 8. Refer to plan and specs. for additional information.

3 SHRUB PLANTING DETAIL
L2 NOT TO SCALE



- NOTES:
1. EXTEND EXCAVATION AND BACKFILL SOIL TO A POINT DOWNSLOPE EQUAL TO OR LOWER IN ELEVATION THAN THE BOTTOM OF THE HOLE DIRECTLY BENEATH THE PLANT TO INSURE ADEQUATE DRAINAGE IN HEAVY SOILS. GRANULAR SOIL MUST BE ADDED AS BACKFILL IN AREAS OF POOR DRAINAGE.
 2. PLANT ACCORDING TO SHRUB AND TREE PLANTING DETAILS ON THIS SHEET.

4 PLANTING ON A SLOPE DETAIL
L2 NOT TO SCALE



- NOTES:
1. Plant into prepared planting bed.
 2. Plant at same depth as in container.
 3. Place double shredded hardwood mulch over perennial bed. Do not place any mulch on vegetation.
 4. Thoroughly water in plants.
 5. Refer to plan and specs. for additional information.

5 PERENNIAL PLANTING DETAIL
L2 NOT TO SCALE

LANDSCAPE SPECIFICATIONS

TREES, SHRUBS, AND PERENNIALS

1. REFERENCES
 - A. MnDOT - Minnesota Department of Transportation, Standard Specifications for Construction, 2020 Edition.
 - B. American Standard for Nursery Stock, ANSI Z60.1-2014.
 - C. ASTM, American Society for Testing and Materials.
2. QUALITY ASSURANCE
 - A. Work shall be performed by a landscape contractor with extensive horticulture knowledge, and a min. of 3 years of experience.
 - B. Handle plants in such a way as to protect from damage either physical or by exposure to sun and wind. Mishandled plants are subject to rejection by Landscape Architect.
 - C. Plants used on this project shall meet the grading standards recommended by the ANSI Z60.1-2014.
3. PRODUCTS
 - A. Plants: Provide as specified on Plant Schedule.
 - B. Edging: Heavy duty poly edger: 5" depth w/ v-lip to prevent frost heave, and steel stakes, black color, Sure-loc Elite-Edge or equal.
 - C. Mulch: Mink mulch.
 - D. Water: Contractor to provide.
 - E. Planting Soil: rich friable, loam topsoil, free of debris and seeds, conforming to MnDOT 3877.2, Loam Topsoil Borrow.
 - F. Compost: Conforming to MnDOT 3890.2, Grade 2.
 - G. Tree Wrap: Two-ply weather resistant paper product.

4. PLANTING DATES: Spring Planting: Apr. 1 - June 15. These dates may be extended if daytime temps. remain below 80 degrees. Fall: Sept. 30 - Oct. 30th. Daytime temps. need to drop below 80 degrees before planting begins, and may continue until freeze up. Coniferous trees Aug. 15 - Oct. 1st. Plant under favorable weather conditions, do not plant during days of extreme heat.

5. EXECUTION
 - A. Prior to digging, Contractor to have utilities located.
 - B. Contractor to notify Owner and Landscape Architect 3 days in advance of when planting work will occur.
 - C. Plant into prepared planting beds.
 - D. Install trees, shrubs, and perennials per planting details, adjust location if in conflict with utilities. Verify new location with Landscape Architect prior to planting.
 - E. Separate all shrub and perennial beds from sod areas with edger.
 - F. Clean-up entire site following planting operations.

6. ACCEPTANCE OF PLANTING WORK
 - A. Contractor to notify Owner when planting work is complete for review and punch list.
 - B. Contractor to water and maintain the trees, shrubs, and perennials until Owner Acceptance.
 - C. Owner will give Acceptance of Work following satisfactory correction of punch list items.
 - D. Watering and regular landscape maintenance of trees, shrubs, and perennials will be Owners responsibility following acceptance of work.

7. GUARANTEE PERIOD
 - A. Contractor to warranty trees, shrubs and perennials for 2-years following acceptance of Work by Owner.
 - B. Contractor to maintain the trees in a plumb position throughout the guarantee period.
 - C. Contractor to remove all staking/wiring/ straps and plant tags from trees at the end of the guarantee period.
 - D. Replacements: At the end of the guarantee period, all plants which are unhealthy, dead, not having a normal density, size, shape or color shall be replaced. Replacements shall match caliper and/or height of the other plants at time of replacement. Selection of replacement material and installation practices shall follow the requirements of the Drawings and Specifications.

SODDING

1. AREAS TO SOD
 - A. Sod areas noted on plan. Sod all landscape areas not called out for other plant material.
2. REFERENCES
 - A. MnDOT - Minnesota Department of Transportation, Standard Specifications for Construction, 2020 Edition.
3. PRODUCTS
 - A. Sod: Provide drought tolerant, strongly rooted sod, machine cut to pad thickness of 1", excluding top growth and thatch. Sod to be at least 2 years old, free of weeds, disease, or other material which might be detrimental to the development of the sod. Sod to be moist when cut and maintained in moist condition during transportation and storage at the site. Do not use sod that shows signs of visible heating on this project.
 - B. Fertilizer: Slow release 5-10-5 starter fertilizer.
 - C. Water: Contractor to provide.
 - D. Topsoil: provide rich friable, sandy loam, free of debris and seeds, and conforming to MnDOT 3877.2 Common Topsoil Borrow.
4. SOIL PREPARATION
 - A. Verify all sod areas have a minimum of 4" of topsoil.
 - B. Immediately prior to sodding, loosen topsoil to minimum depth of 3".
 - C. On slopes operate cultivating equipment at right angles to the direction of surface drainage.
 - D. Contractor to work all areas to receive sod until the soil is smooth and an even grade is established. Fill all holes, depressions and rivulets to ensure an even grade and that proper elevation is established. Fill material shall be compacted sufficiently to provide uniform density and to resist erosion. Remove all rubble, sticks, branches, stones and other extraneous material over 1/2" in diameter on the surface prior to sodding.
 - E. For all areas to be sodded work in dry, free flowing slow release starter fertilizer into the top 1 inch of soil.
5. EXECUTION
 - A. Install sod during favorable weather, do not sod if ground is frozen or sod is dormant.
 - B. Lay sod with tightly fitting joints, no overlapping joints, and stagger rows to offset joints. Anchor sod on slopes to prevent slippage.
 - C. Thoroughly water sod immediately after installing. Continue watering at frequency necessary to initiate rooting, and until the work is accepted by Owner.
 - D. Clean up and remove all debris resulting from sodding activity and dispose of properly. Restore all areas disturbed by sodding operation to their original condition.
6. ACCEPTANCE OF SOD WORK
 - A. Contractor to notify Owner when sod work is complete for review and punch list.
 - B. Owner to accept work following satisfactory correction of punch list items.
 - C. Contractor will maintain all turf areas in a healthy, growing condition by watering, mowing, and any other maintenance necessary to establish the lawn, for a minimum of 30 days from time of acceptance.
 - D. Any sod that does not show definite growth and establishment during the 30 days from time of acceptance, shall be replaced and established at the proper season by the Contractor at Contractor's expense.

IRRIGATION

1. DESCRIPTION
 - A. Work includes: design, furnish, and install complete, fully automatic and programmable underground irrigation system, capable of alternate date watering for all landscape areas. The system shall provide full coverage with uniform levels of total precipitation throughout all irrigated areas.
 - B. The system is to include water efficient technologies including: a WaterSense labeled controller, a flow meter, soil moisture and/or evapotranspiration (ET) sensors, a rain sensor, and be calibrated to meet all applicable City Codes.
 - C. Dripline to be used in perennial and shrub beds not covered by lawn sprinklers.
 - D. The system is to meet state department of health standards and have a backflow preventer.
 - E. Materials, equipment, and methods of design and installation shall comply with, but not be limited to, the following codes and standards:
 - All local and state laws and ordinances, and with all the established codes applicable thereto.
 - National Electrical Code.
 - American Society for Testing and Materials (ASTM).
 - National Sanitation Foundation (NSF).
 - The best management practices developed by the Irrigation Association.
 - F. The designer shall provide balanced pressure and flow and optimum operating efficiency.
 - G. The contractor is responsible for obtaining all permits and licenses required for installation of irrigation system.
2. QUALITY ASSURANCE
 - A. The irrigation system shall be designed and installed by a contractor specializing in irrigation work, and will have a minimum of 5 years of experience designing and installing systems of similar scope and size.
 - B. The contractor shall maintain a skilled foreman on site during the installation of all work and the foreman will have a Minnesota Power Limited Technician License.
3. SUBMITTALS
 - A. Shop Drawings: submit irrigation plan, product schedule, and specifications for review and acceptance.
 - B. Operation and Maintenance Manual: following completion of work, provide the Owner with an operation and maintenance manual of the complete system in a digital pdf file format and one hard copy.
 - C. As-Built Plan: following completion of work, contractor to furnish Owner a scaled as-built irrigation map, with dimensions as needed, on durable paper or laminated to be mounted on wall with the main control panel and a digital file in pdf format. The map shall indicate the zones, location of all controls, piping and depths, heads (including type), drip-lines, valves, connection to water service, and other related components.
4. PRODUCTS
 - A. Select products suitable to the landscape areas.
 - B. All products and materials used in the system shall be new and professional grade.
 - C. Provide sprinkler heads, driplines, electric valves, and automatic controller from one manufacturer: Toro, Rainbird, Hunter Industries, or equal.
5. EXECUTION
 - A. Prior to digging, contractor to have utilities located.
 - B. Water Coverage: Provide uniform water coverage over turf areas and planting beds.
 - C. Turf: Turf areas to be irrigated with spray heads. Locate heads to avoid overspray onto sidewalks, parking areas, signs and buildings.
 - D. Planting Beds: All continuous shrubs, trees, perennial beds to be irrigated with a drip system and spray heads where drip lines are impractical.
 - E. Winterization: System to accommodate winterization by blowing system dry with compressed air.
 - F. Install the irrigation system per contractor's plan and specifications.
 - G. Instructions: Contractor to instruct the Owner in proper operation and maintenance of the system.
 - H. Cleanup: Replace landscaping disturbed by operations. Cleanup all debris and restore site to original condition.
6. REVIEW AND ACCEPTANCE
 - A. Contractor to test system to a hydrostatic pressure of not less than 100 psi. Remove and replace any components that do not pass test.
 - B. Contractor to contact Owner and perform operational test after system is fully in place and demonstrate to the Owner that the irrigation system meets coverage requirements and that automatic controls function properly. Any corrective work identified shall be completed within two weeks of receipt of comments.
 - C. Owner to accept work following: satisfactory completion of any corrective work, receiving hands-on instructions for operation, and receiving as-built plan and operation and maintenance manual submittals.
7. MAINTENANCE
 - A. Contractor to drain and winterize irrigation system in the fall, following first year of operation, and shall put the system back in service the following spring as part of the work of this contract at no additional cost to the Owner.
8. GUARANTEE
 - A. Warranty irrigation system materials and labor for one year following acceptance of work by Owner. Contractor to promptly furnish and install, at no cost to Owner, any parts that prove defective in material or workmanship.

DATE	REVISIONS
06.12.2024	PLAN REVISIONS PER CITY COMMENTS

I hereby certify that this plan, specification, or report was prepared by me or under my direct supervision and that I am a duly Licensed Landscape Architect under the laws of the State of Minnesota. Name: Carmen Simonet
Signature: _____
License # 24236 Date 03.09.2023

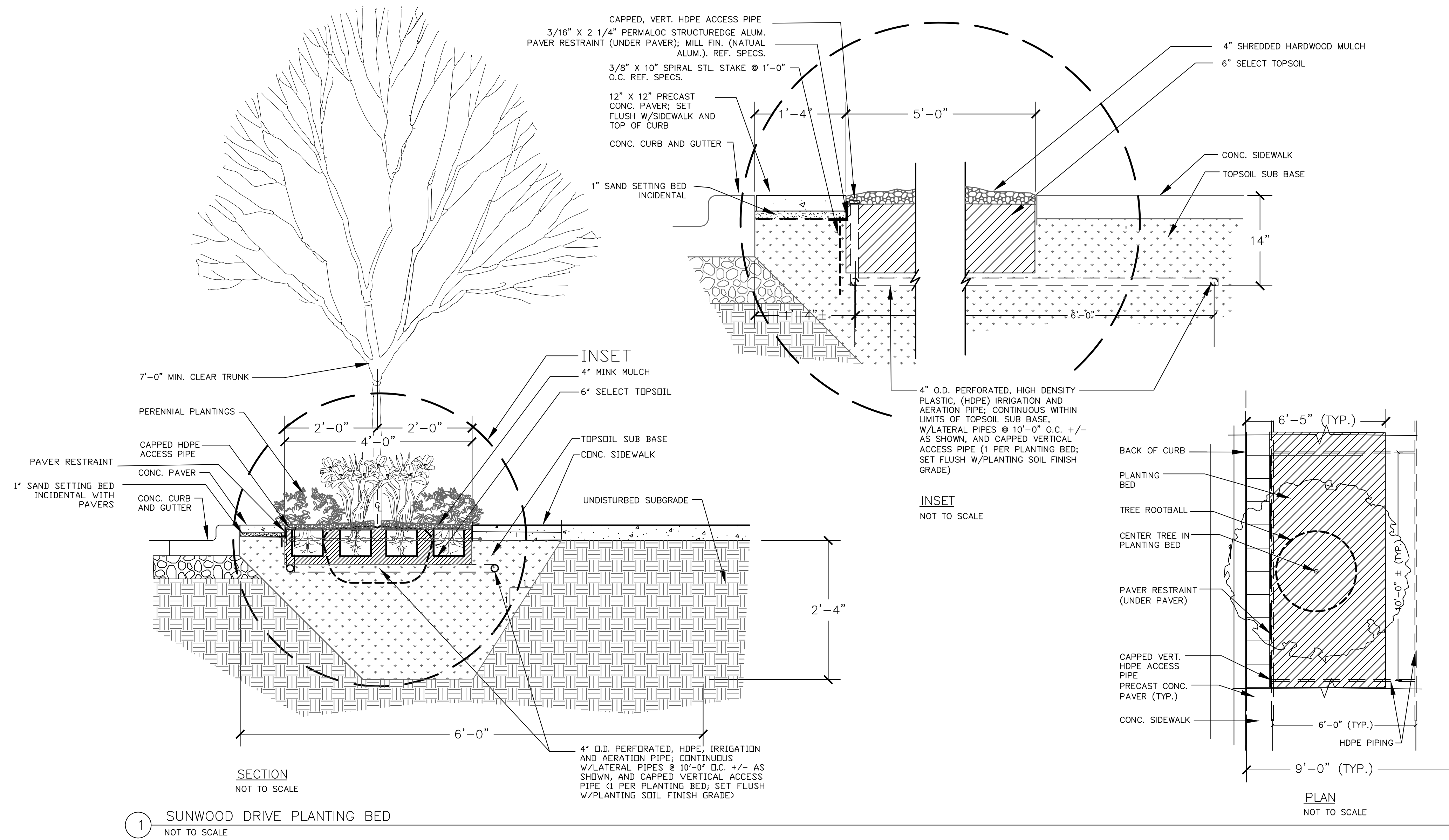
LANDSCAPE ARCHITECT:
Carmen Simonet Design LLC
354 Stonebridge Blvd., St. Paul, MN 55105
(651) 695-0273 carmen@simonetdesign.com
www.simonetdesign.com



Hakanson Anderson
Civil Engineers and Land Surveyors
3601 Thurston Ave., Anoka, Minnesota 55303
763-427-5860 FAX 763-427-0520
www.hakanson-anderson.com

SKYLINE ON SUNWOOD

PLANTING DETAILS &
LANDSCAPE SPECS.
CITY OF RAMSEY, MINNESOTA



DATE	REVISIONS
06.12.2024	PLAN REVISIONS PER CITY COMMENTS

I hereby certify that this plan, specification, or report was prepared by me or under my direct supervision and that I am a duly Licensed Landscape Architect under the laws of the State of Minnesota. Name: Carmen Simonet
 Signature: _____
 License # 24236 Date 03.09.2023

LANDSCAPE ARCHITECT:
 Carmen Simonet Design LLC
 354 Stonebridge Blvd., St. Paul, MN 55105
 (651) 695-0273 carmen@simonetdesign.com
 www.simonetdesign.com



Hakanson Anderson
 Civil Engineers and Land Surveyors
 3601 Thurston Ave., Anoka, Minnesota 55303
 763-427-5860 FAX 763-427-0520
 www.hakanson-anderson.com

SKYLINE ON SUNWOOD

SIDEWALK PLANTER DETAIL
 CITY OF RAMSEY, MINNESOTA

SHEET
 L3
 OF
 L3
 SHEETS