

SKETCH & DESCRIPTION

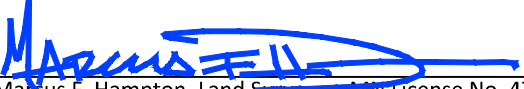
FOR: Centra Homes, LLC

EASEMENT VACATION

The permanent drainage easement, originally granted in document number 447984, office of the Registrar or Titles, Anoka County, Minnesota.

I hereby certify that this survey, plan or report was prepared by me or under my direct supervision and that I am a duly licensed Professional Land Surveyor under the laws of the State of Minnesota.

Signed this 16th day of February, 2024
For: James R. Hill, Inc.

By: 
Marcus F. Hampton, Land Surveyor, Min License No. 47481

DRAWN BY	PLM
DATE	2/16/2024
REVISIONS	
CAD FILE	24108vac-2.dwg
PROJECT NO.	24108-00
PAGE 1 OF 2	

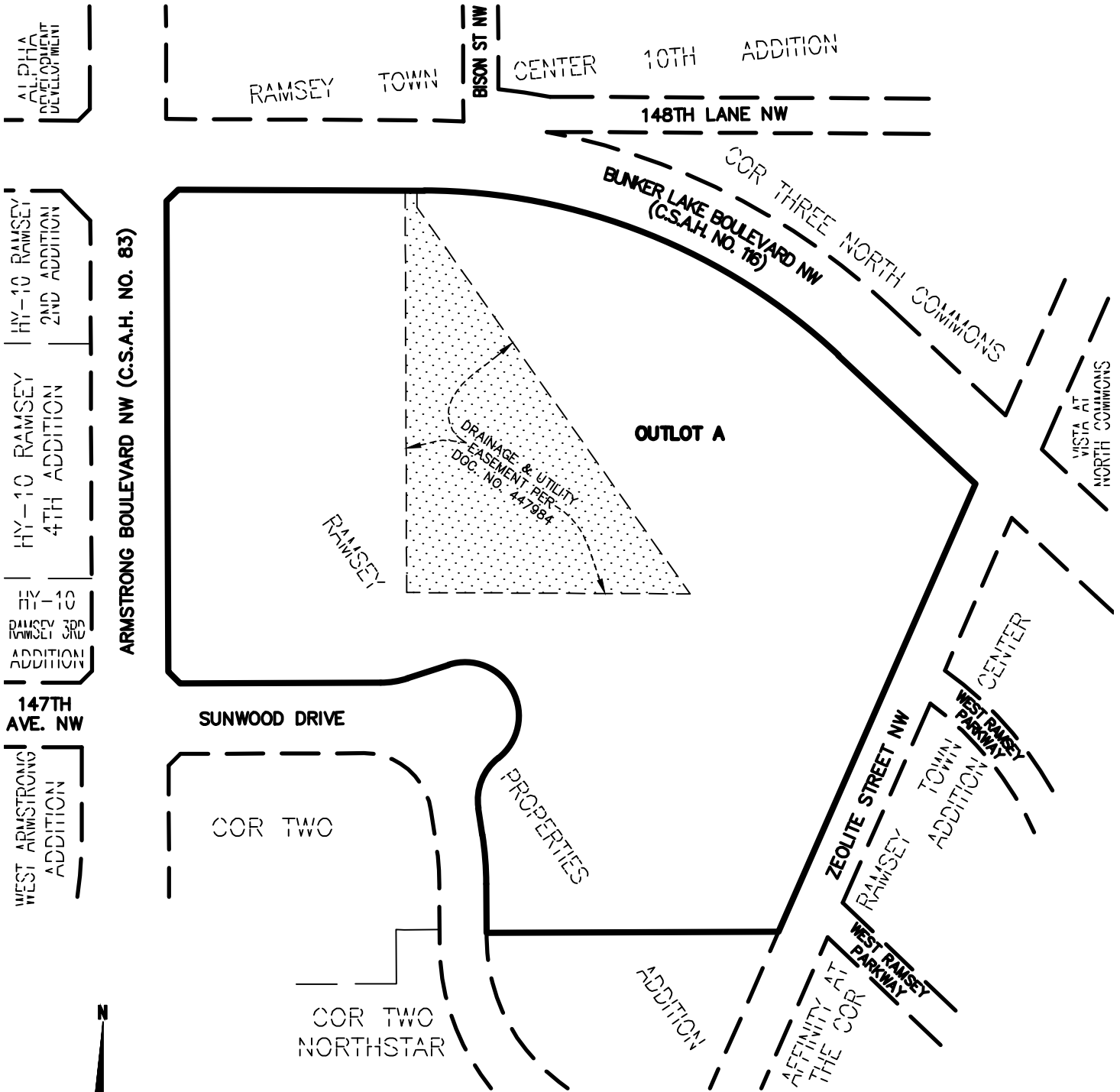


James R. Hill, Inc.

PLANNERS / ENGINEERS / SURVEYORS
2999 WEST C.R. 42, SUITE 100, BURNSVILLE, MN 55306
PHONE: 952.890.6044 www.jrhinc.com

SKETCH & DESCRIPTION

FOR: Centra Homes, LLC



Scale: 1"=250'

 EASEMENT
 VACATION