

SKETCH & DESCRIPTION

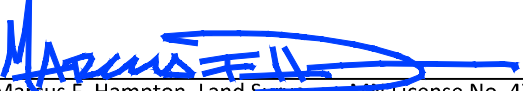
FOR: Centra Homes, LLC

EASEMENT VACATION


That particular drainage and utility easement, originally dedicated on the recorded plat of COR TWO, Anoka County, Minnesota, and now to be vacated, which lies within Outlot A, said plat of COR TWO.

I hereby certify that this survey, plan or report was prepared by me or under my direct supervision and that I am a duly licensed Professional Land Surveyor under the laws of the State of Minnesota.

Signed this 16th day of February, 2024
For: James R. Hill, Inc.

By: 
Marcus F. Hill, Land Surveyor, Min License No. 47481

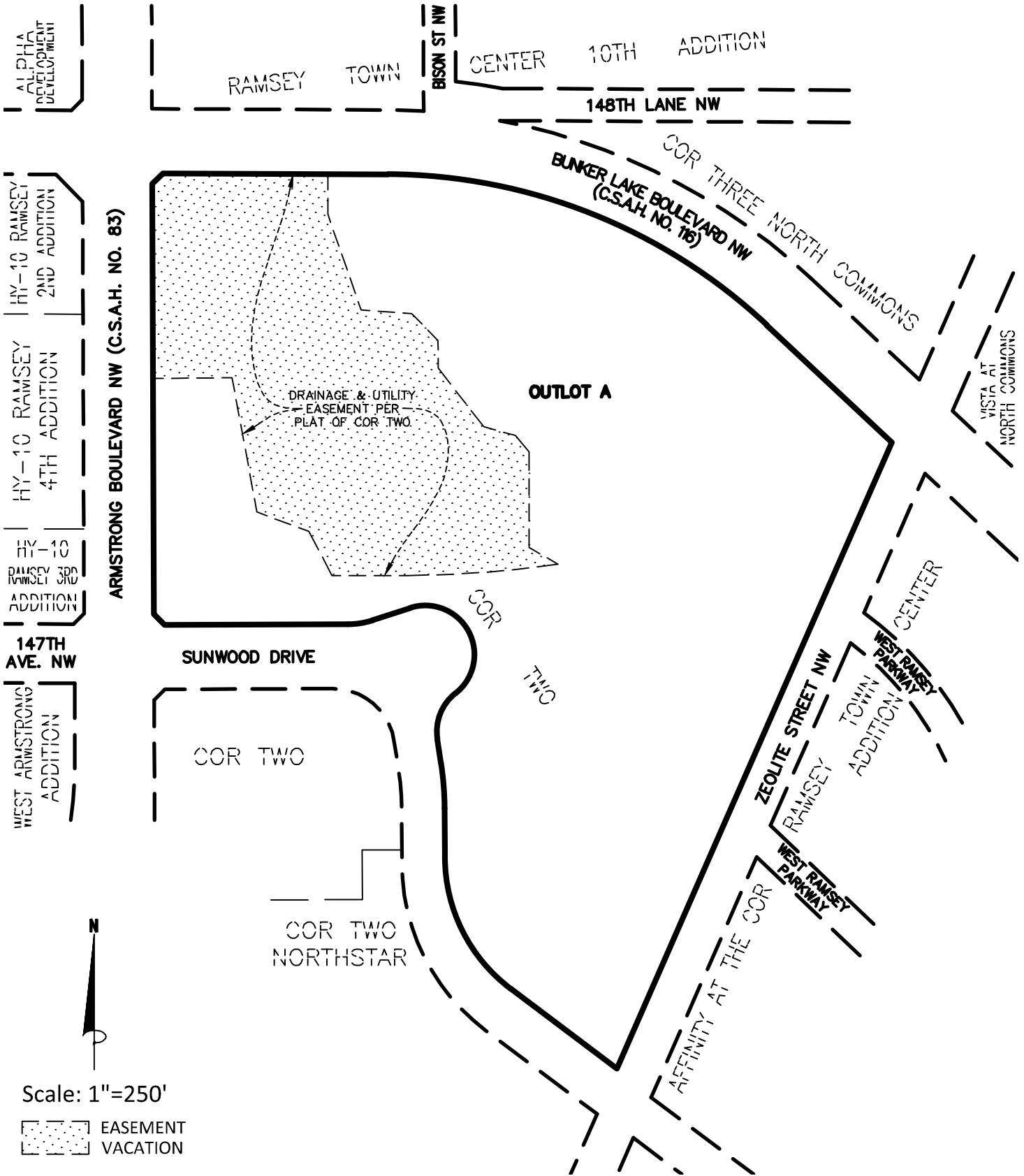
DRAWN BY	PLM
DATE	2/16/2024
REVISIONS	
CAD FILE	24108vac-1.dwg
PROJECT NO.	24108-00
PAGE 1 OF 2	



James R. Hill, Inc.
 PLANNERS / ENGINEERS / SURVEYORS
 2999 WEST C.R. 42, SUITE 100, BURNSVILLE, MN 55306
 PHONE: 952.890.6044 www.jrhinc.com

SKETCH & DESCRIPTION

FOR: Centra Homes, LLC



Scale: 1"=250'

■ EASEMENT
■ VACATION