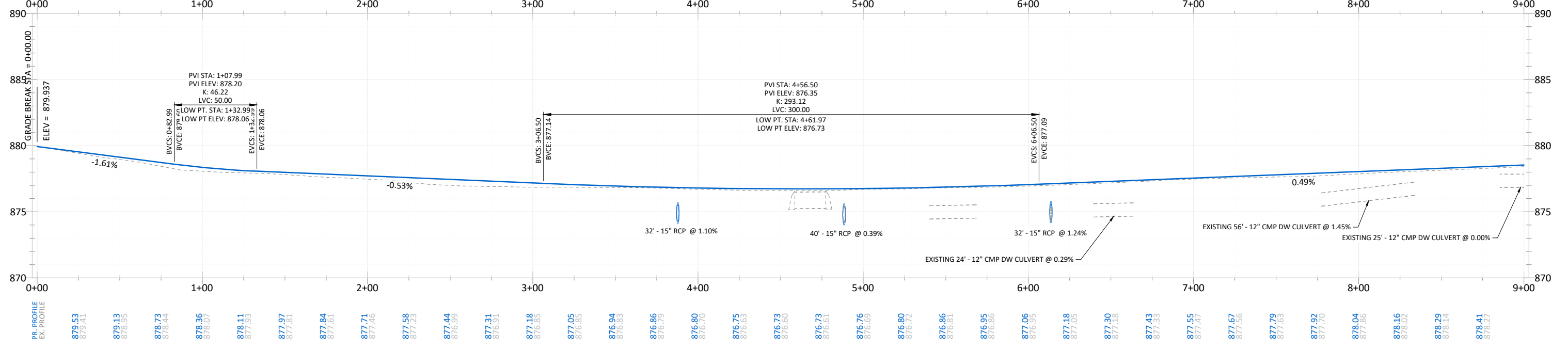


LEGEND		B618 CURB & GUTTER		PR. CONTOUR		PR. STORM MANHOLE	
	BIT PAVEMENT		NEW DRIVEWAY - CONCRETE		PR. CONTOUR		PR. STORM MANHOLE
	NEW DRIVEWAY - CONC SPECIAL		EASEMENT - NORTHERN NATURAL GAS		PR. STORM SEWER		PR. STORM CATCH BASIN
	NEW DRIVEWAY - BITUMINOUS		EASEMENT - DRAINAGE & UTILITY		RIPRAP CLASS III		PR. FLARED END SECTION
	NEW DRIVEWAY - GRAVEL		SURMOUNTABLE CURB & GUTTER		SEEDING AREA		DRAINAGE ARROW

NOTE:
 1. ALL RADII TO BE CONSTRUCTED AT 20' UNLESS OTHERWISE NOTED.
 2. TYPICAL SECTION SEE SHEET 04.
 3. RESTORATION AREAS ARE SHOWN IN A GENERAL MANNER ONLY.
 4. RESTORE ALL DISTURBED AREAS WITH 4" TOPSOIL, HYDROSEED, MNDOT SEED MIX 25-151, AND HYDRAULIC MATRIX TYPE MULCH UNLESS OTHERWISE NOTED.

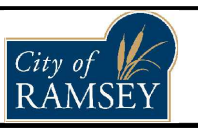
Profile View of 24-01 - 164TH LN CL



DATE	REVISION
07/11/24	ADDED DITCH GRADING

I hereby certify that this plan, specification, or report was prepared by me or under my direct supervision and that I am a duly Licensed Professional Engineer under the laws of the State of Minnesota.
 JOE FERIANCEK
 Date 12/12/23 Lic. No. 57095

DESIGNED BY:	LWC
DRAWN BY:	LWC
CHECKED BY:	JJF



CITY OF RAMSEY
 7550 SUNWOOD DRIVE
 RAMSEY, MN 55303
 (763) 427-1410 FAX (763) 433-9898

STREET CONSTRUCTION

BARTHEL'S RUM RIVER ACRES & WHITE PINE ESTATES
 STREET RECONSTRUCTION
 CITY PROJECT NO. 24-01
 CITY OF RAMSEY, MINNESOTA