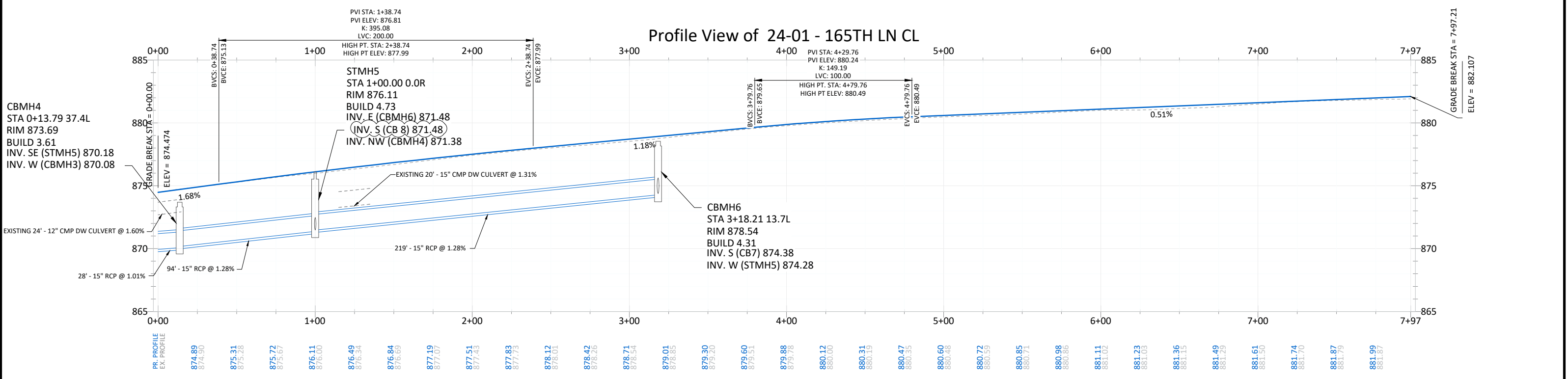


LEGEND	
	BIT PAVEMENT
	NEW DRIVEWAY - CONCRETE
	NEW DRIVEWAY - CONC SPECIAL
	NEW DRIVEWAY - BITUMINOUS
	NEW DRIVEWAY - GRAVEL
	B618 CURB & GUTTER
	EASEMENT - NORTHERN NATURAL GAS
	EASEMENT - DRAINAGE & UTILITY
	LOT LINE
	PR. CONTOUR
	PR. STORM SEWER
	RIPRAP CLASS III
	SEEDING AREA
	PR. STORM MANHOLE
	PR. STORM CATCH BASIN
	PR. FLARED END SECTION

- NOTE:
1. ALL RADII TO BE CONSTRUCTED AT 20' UNLESS OTHERWISE NOTED.
  2. TYPICAL SECTION SEE SHEET 04.
  3. RESTORATION AREAS ARE SHOWN IN A GENERAL MANNER ONLY.
  4. RESTORE ALL DISTURBED AREAS WITH 4" TOPSOIL, HYDROSEED, MNDOT SEED MIX 25-151, AND HYDRAULIC MATRIX TYPE MULCH UNLESS OTHERWISE NOTED.



DATE: 01/24/24 REVISION: ADDED CB7 INFO 07/11/24 ADDED CB8	I hereby certify that this plan, specification, or report was prepared by me or under my direct supervision and that I am a duly Licensed Professional Engineer under the laws of the State of Minnesota.  JOE FERIANCEK Date: 12/12/23 Lic. No. 57095	DESIGNED BY: LWC DRAWN BY: LWC CHECKED BY: JJF	DATE: 12/12/23 FILE: 24-01	 <b>CITY OF RAMSEY</b> 7550 SUNWOOD DRIVE RAMSEY, MN 55303 (763) 427-1410 FAX (763) 433-9898	<b>STREET CONSTRUCTION</b> BARTHEL'S RUM RIVER ACRES & WHITE PINE ESTATES STREET RECONSTRUCTION CITY PROJECT NO. 24-01 CITY OF RAMSEY, MINNESOTA	SHEET 28 OF 50 SHEETS
--	---	--	-------------------------------	--	--	-----------------------