

ISSUE #	DATE	DESCRIPTION
1	2024-02-09	SITE PLAN REVIEW
2	2024-03-12	SITE PLAN REVIEW r1

NOT FOR CONSTRUCTION

DRAWN BY	SB
CHECKED BY	BH
COMMISSION NUMBER	2236-10

SHEET TITLE

**ALL AGES BUILDING
ZONE D - LANDSCAPE
PLAN**

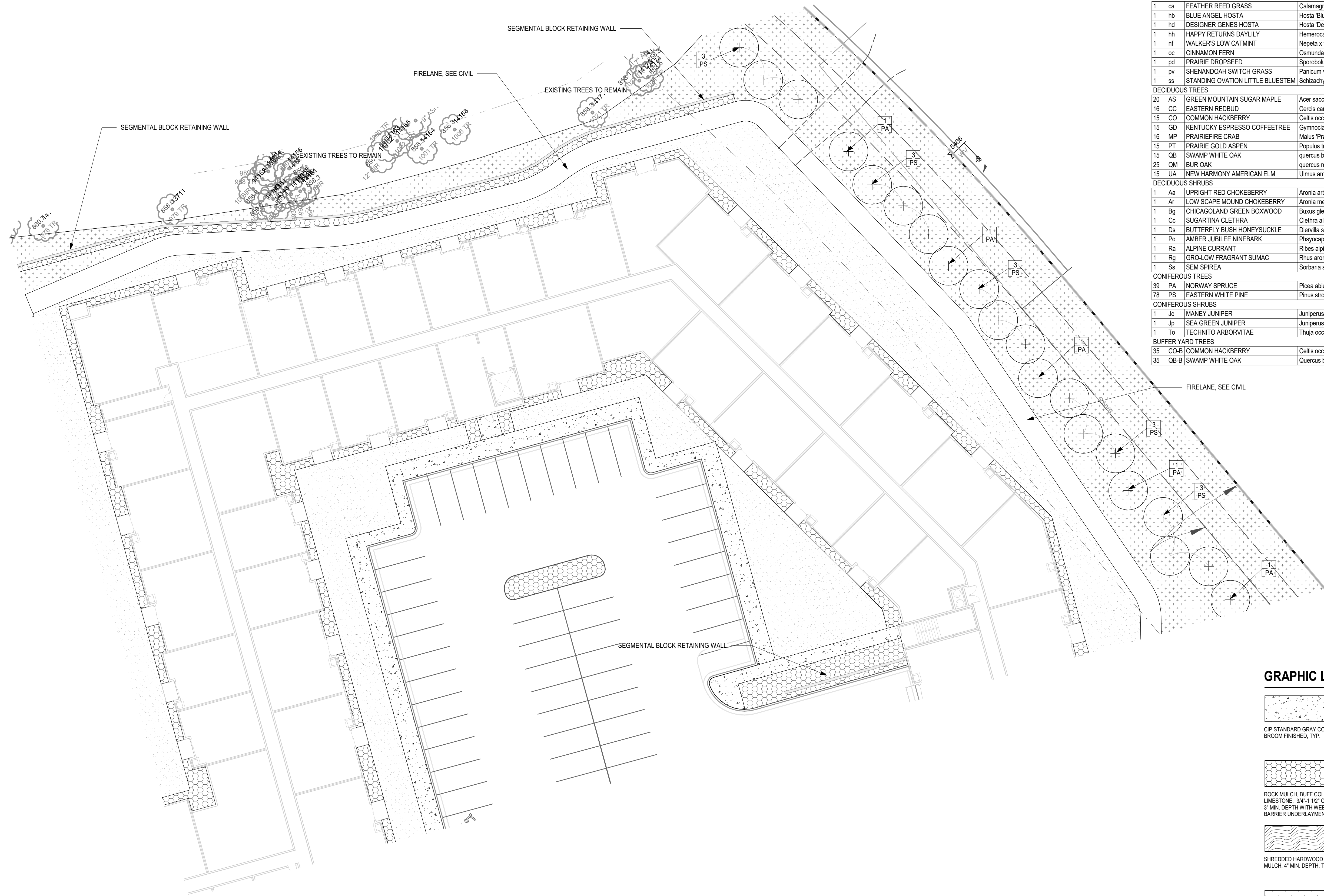
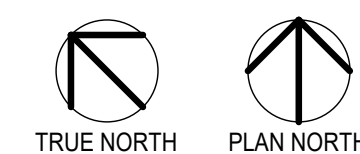
SHEET NUMBER

LS3111

PROPOSED PLANT SCHEDULE:

QTY	SYM	COMMON NAME	SCIENTIFIC NAME	PLANTING SIZE
PERENNIALS/GRASSES/VINES				
1	ca	FEATHER REED GRASS	Calamagrostis arundinacea var. brachytricha	#1 CONT.
1	hb	BLUE ANGEL HOSTA	Hosta 'Blue Angel'	#1 CONT.
1	hd	DESIGNER GENES HOSTA	Hosta 'Designer Genes'	#1 CONT.
1	hh	HAPPY RETURNS DAYLILY	Hemerocallis 'Happy Returns'	#1 CONT.
1	nf	WALKER'S LOW CATMINT	Nepeta x faassenii 'Walker's Low'	#1 CONT.
1	oc	CINNAMON FERN	Osmunda cinnamomea	#1 CONT.
1	pd	PRAIRIE DROPSSEED	Sporobolus heterolepis	#1 CONT.
1	pv	SHENANDOAH SWITCH GRASS	Panicum virgatum 'Shenandoah'	#1 CONT.
1	ss	STANDING OVATION LITTLE BLUESTEM	Schizachyrium scoparium 'Standing Ovation' (PP25, 202)	#1 CONT.
DECIDUOUS TREES				
20	AS	GREEN MOUNTAIN SUGAR MAPLE	Acer saccharum 'Green Mountain'	1" CAL.
16	CC	EASTERN REDBUD	Cercis canadensis	1" CAL.
15	CO	COMMON HACKBERRY	Celtis occidentalis	1" CAL.
15	GD	KENTUCKY ESPRESSO COFFEETREE	Gymnocladus dioica 'Espresso-JFS'	1" CAL.
16	MP	PRAIRIEFIRE CRAB	Malus 'Prairiefire'	1" CAL.
15	PT	PRAIRIE GOLD ASPEN	Populus tremuloides 'NEArb'	1" CAL.
15	QB	SWAMP WHITE OAK	quercus bicolor	1" CAL.
25	QM	BUR OAK	quercus macrocarpa	1" CAL.
15	UA	NEW HARMONY AMERICAN ELM	Ulmus americana 'New Harmony'	1" CAL.
DECIDUOUS SHRUBS				
1	Aa	UPRIGHT RED CHOKEBERRY	Aronia arbutifolia 'Erecta'	#5 CONT.
1	Ar	LOW SCAPE MOUND CHOKEBERRY	Aronia melanocarpa 'UCONNAM 165' (PP28,789)	#5 CONT.
1	Bg	CHICAGO LAND GREEN BOXWOOD	Buxus glencoe	#5 CONT.
1	Cc	SUGARTINA CLETHRA	Clethra alnifolia 'Crystalina' (PP21, 561)	#3 CONT.
1	Ds	BUTTERFLY BUSH HONEYSUCKLE	Diervilla sessilifolia 'Butterfly'	#5 CONT.
1	Po	AMBER JUBILEE NINEBARK	Physocarpus opulifolius 'Jefam' (PP23, 177)	#5 CONT.
1	Ra	ALPINE CURRANT	Ribes alpinum	#5 CONT.
1	Rg	GRO-LOW FRAGRANT SUMAC	Rhus aromatica 'Gro-Low'	#5 CONT.
1	Ss	SEM SPIREA	Sorbaria sorbifolia 'Sem'	#5 CONT.
CONIFEROUS TREES				
39	PA	NORWAY SPRUCE	Picea abies	5' B&B
78	PS	EASTERN WHITE PINE	Pinus strobus	5' B&B
CONIFEROUS SHRUBS				
1	Jc	MANEY JUNIPER	Juniperus chinensis 'Maney'	#5 CONT.
1	Jp	SEA GREEN JUNIPER	Juniperus x pfitzeriana 'Sea Green'	#5 CONT.
1	To	TECHNITO ARBORVITAE	Thuja occidentalis 'Ballohn' (PP15, 850)	5' B&B
BUFFER YARD TREES				
35	CO-B	COMMON HACKBERRY	Celtis occidentalis	2" CAL.
35	QB-B	SWAMP WHITE OAK	Quercus bicolor	2" CAL.

GRAPHIC LEGEND:



1 ALL AGES BUILDING ZONE D - LANDSCAPE PLAN
LS3111 1" = 20'-0"

CONSULTANTS

PROJECT TITLE
HAVILAND FIELDS

ISSUE #	DATE	DESCRIPTION
1	2024-02-09	SITE PLAN REVIEW
2	2024-03-12	SITE PLAN REVIEW r1

CERTIFICATION

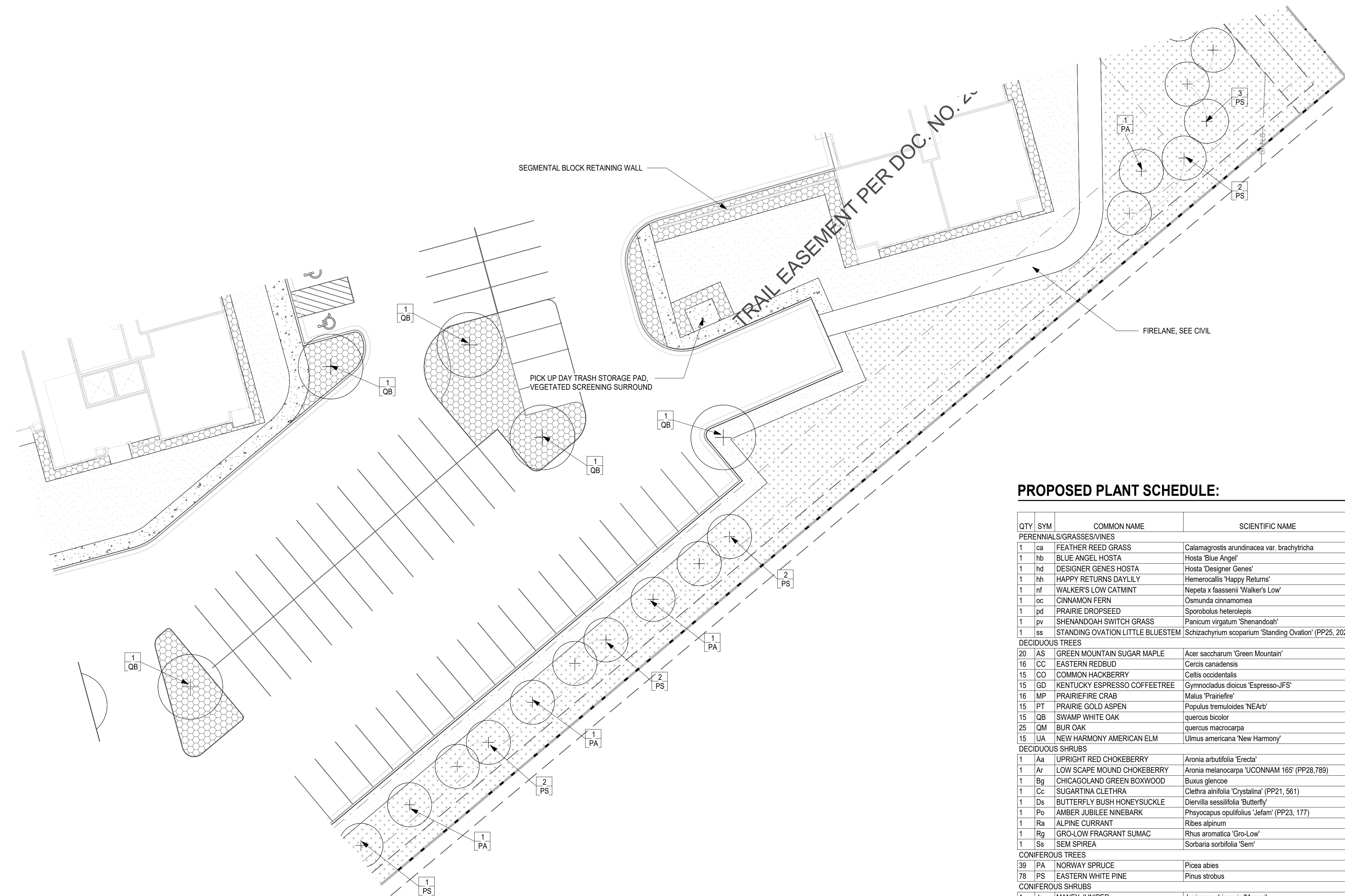
DRAWN BY	SB
CHECKED BY	BH
COMMISSION NUMBER	2236-10

SHEET TITLE

**ALL AGES BUILDING
ZONE E - LANDSCAPE
PLAN**

SHEET NUMBER

LS3112

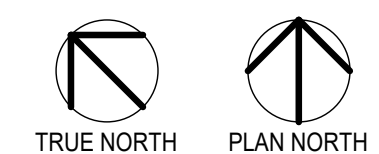


PROPOSED PLANT SCHEDULE:

QTY	SYM	COMMON NAME	SCIENTIFIC NAME	PLANTING SIZE
PERENNIALS/GRASSES/VINES				
1	ca	FEATHER REED GRASS	Calamagrostis arundinacea var. brachytricha	#1 CONT.
1	hb	BLUE ANGEL HOSTA	Hosta 'Blue Angel'	#1 CONT.
1	hd	DESIGNER GENES HOSTA	Hosta 'Designer Genes'	#1 CONT.
1	hh	HAPPY RETURNS DAYLILY	Hemerocallis 'Happy Returns'	#1 CONT.
1	nl	WALKER'S LOW CATMINT	Nepeta x faassenii 'Walker's Low'	#1 CONT.
1	oc	CINNAMON FERN	Osmunda cinnamomea	#1 CONT.
1	pd	PRAIRIE DROPSEED	Sporobolus heterolepis	#1 CONT.
1	pv	SHENANDOAH SWITCH GRASS	Panicum virgatum 'Shenandoah'	#1 CONT.
1	ss	STANDING OVATION LITTLE BLUESTEM	Schizachyrium scoparium 'Standing Ovation' (PP25, 202)	#1 CONT.
DECIDUOUS TREES				
20	AS	GREEN MOUNTAIN SUGAR MAPLE	Acer saccharum 'Green Mountain'	1" CAL.
16	CC	EASTERN REDBUD	Cercis canadensis	1" CAL.
15	CO	COMMON HACKBERRY	Celtis occidentalis	1" CAL.
15	GD	KENTUCKY ESPRESSO COFFEETREE	Gymnocladus dioica 'Espresso-JFS'	1" CAL.
16	MP	PRAIRIEFIRE CRAB	Malus 'Prairiefire'	1" CAL.
15	PT	PRAIRIE GOLD ASPEN	Populus tremuloides 'NEArb'	1" CAL.
15	QB	SWAMP WHITE OAK	quercus bicolor	1" CAL.
25	QM	BUR OAK	quercus macrocarpa	1" CAL.
15	UA	NEW HARMONY AMERICAN ELM	Ulmus americana 'New Harmony'	1" CAL.
DECIDUOUS SHRUBS				
1	Aa	UPRIGHT RED CHOKEBERRY	Aronia arbutifolia 'Erecta'	#5 CONT.
1	Ar	LOW SCAPE MOUND CHOKEBERRY	Aronia melanocarpa 'UCONNAM 165' (PP28, 789)	#5 CONT.
1	Bg	CHICAGOLAND GREEN BOXWOOD	Buxus glencoe	#5 CONT.
1	Cc	SUGARTINA CLETHRA	Clethra alnifolia 'Crystalina' (PP21, 561)	#3 CONT.
1	Ds	BUTTERFLY BUSH HONEYSUCKLE	Diervilla sessilifolia 'Butterfly'	#5 CONT.
1	Po	AMBER JUBILEE NINEBARK	Physocarpus opulifolius 'Jefam' (PP23, 177)	#5 CONT.
1	Ra	ALPINE CURRANT	Ribes alpinum	#5 CONT.
1	Rg	GRO-LOW FRAGRANT SUMAC	Rhus aromatica 'Gro-Low'	#5 CONT.
1	Ss	SEM SPIREA	Sorbaria sorbifolia 'Sem'	#5 CONT.
CONIFEROUS TREES				
39	PA	NORWAY SPRUCE	Picea abies	5' B&B
78	PS	EASTERN WHITE PINE	Pinus strobus	5' B&B
CONIFEROUS SHRUBS				
1	Jc	MANEY JUNIPER	Juniperus chinensis 'Maney'	#5 CONT.
1	Jp	SEA GREEN JUNIPER	Juniperus x pfitzeriana 'Sea Green'	#5 CONT.
1	To	TECHNITO ARBORVITAE	Thuja occidentalis 'Balljohn' (PP15, 850)	5' B&B
BUFFER YARD TREES				
35	CO-B	COMMON HACKBERRY	Celtis occidentalis	2" CAL.
35	QB-B	SWAMP WHITE OAK	Quercus bicolor	2" CAL.

*SHRUBS AND PERENNIALS SHOWN FOR SPECIES REFERENCE ONLY. FINAL PLANT COUNTS TO BE DETERMINED

GRAPHIC LEGEND:



**NOT FOR
CONSTRUCTION**