

**STATE OF MINNESOTA
DEPARTMENT OF TRANSPORTATION
AND
ANOKA COUNTY
AND
CITY OF RAMSEY
AMENDMENT NO. 1**

State Project Number:	<u>0202-116</u>	Original Amount Encumbered
Trunk Highway Number:	<u>10=003</u>	<u>\$28,000,000.00</u>
State Project Number:	<u>002-596-026</u>	Total Obligation
State Project Number:	<u>002-656-001</u>	<u>\$28,000,000.00</u>
State Project Number:	<u>002-657-003</u>	
State Project Number:	<u>199-113-003</u>	
State Project Number:	<u>199-115-006</u>	
Federal Project Number:	<u>NHFP-STBG 0010(340)</u>	
Lighting System A Feed Point No.:	<u>F04R</u>	
Lighting System B Feed Point No.:	<u>F04W</u>	
Lighting System C Feed Point No.:	<u>F04U</u>	
Lighting System D Feed Point No.:	<u>F04Y</u>	
Lighting System E Feed Point No.:	<u>City</u>	
Lighting System F Feed Point No.:	<u>City</u>	
Lighting System G Feed Point No.:	<u>City</u>	
Lighting System H Feed Point No.:	<u>City</u>	
Bridge Numbers:	<u>02061, 02062</u>	

This Amendment is to Agreement 1052605 between the State of Minnesota, acting through its Commissioner of Transportation (State), Anoka County, acting through its Board of Commissioners (County), and the City of Ramsey, acting through its City Council (City).

Recitals

1. The State has an Agreement with the County and the City identified as MnDOT Agreement 1052605 (Original Agreement) to provide payment by the State to the County for the State's share of the costs of the grading, bituminous surfacing, ADA improvements, retaining walls, noise walls, high tension cable guardrail, TMS, lighting, and roundabouts construction and other associated construction upon, along, and adjacent to Trunk Highway (TH) 10 from 0.37 miles east of Armstrong Boulevard (County State Aid Highway [CSAH] 83) to 0.57 miles east of Sunfish Lake Boulevard (CSAH 57) and on CSAH 56 from 0.02 miles south of TH 10/169 to 0.40 miles south of Bunker Lake Boulevard (CSAH 116) and on CSAH 57 from TH 10/169 to 0.11 miles south of Bunker Lake Boulevard (CSAH 116) and on Riverdale Drive from 0.15 miles west of Ramsey Boulevard to 0.13 miles east of Ramsey Boulevard, and on Sunfish Lake Boulevard from Riverdale Drive to TH 10 according to County-prepared plans, specifications, and special provisions designated by the County as State Project (SP) 002-596-026 and by the City and the State as SP 0202-116 (TH 10=003); and
2. The Original Agreement is amended to clarify the maintenance responsibilities for Bridges 02061 and 02062; and
3. The State, County, and City are willing to amend the Original Agreement as stated below.

Agreement Amendment

REVISION 1. Article 1.6, Exhibits, is amended as follows (deleted contract terms are struck out and added contract terms are underlined):

- 1.6 Exhibits.** Preliminary Schedule "I" is attached and incorporated into this Agreement. Exhibit A – Signing Ownership and Maintenance, Exhibit B – Drainage Ownership and Maintenance, Exhibit C – Wall Maintenance, ~~and~~ Exhibit D – Lighting Maintenance, and Exhibit E – Shared Use Paths Ownership and Maintenance are on file in the office of the State's Cooperative Agreements Engineer at Saint Paul and incorporated into this Agreement by reference.

REVISION 2. Article 5.5, Trails, regarding City maintenance, is deleted in its entirety and replaced with Article 5.5, Shared Use Paths, as follows:

- 5.5 Shared Use Paths.** The City will own and provide routine and minor maintenance of the shared use path construction on State Right-of-Way as shown on Exhibit E – Shared Use Paths Ownership and Maintenance. Routine and minor maintenance may include, but are not limited to, snow and ice control/removal, sweeping and debris removal, patching, crack repair, replacement of failing section(s) of pavement, vegetation control, signing, pavement markings, and any other maintenance activities necessary to perpetuate the shared use path in a safe, usable, and aesthetically acceptable condition as determined by the State's District Maintenance Engineer and all applicable laws including, but not limited to, the Americans with Disabilities Act. If the City fails to perform its maintenance services under this Agreement in compliance with applicable laws, the State will provide the City with a notice of non-compliance. Within three business days of sending the notice of non-compliance, the State's District Maintenance Engineer and the City Engineer will meet to discuss the City's performance of maintenance and decide upon next steps to remedy any non-compliant performance. If the parties cannot agree upon a remedy, the State may perform such obligation and the City will reimburse the State for the cost thereof plus 10 percent of such cost for overhead and supervision within 30 days of receipt of the State's invoice. The State and the City agree that full pavement replacement is outside of routine and minor maintenance, and the State and the City will share in the cost of pavement replacement according to the State's Cost Participation and Maintenance Responsibilities with Local Units of Government Manual, as amended or revised.

REVISION 3. Add the following Articles 5.11, State Right-of-Way Access, and 5.12, Environmental, regarding City maintenance:

- 5.11 State Right-of-Way Access.** The State authorizes the City to enter upon State Right-of-Way to perform the maintenance activities described in this Agreement. The City must notify and coordinate with the State's District Maintenance Engineer prior to accessing State Right-of-Way. While the City is occupying the State's Right-of-Way, they must comply with the approved traffic control plan and with applicable provisions of the Work Zone Field Handbook (<http://www.dot.state.mn.us/trafficeng/workzone/index.html>). All City personnel occupying the State's Right-of-Way must be provided with required reflective clothing and hats.
- 5.12 Environmental.** The City will not dispose of any materials regulated by any governmental or regulatory agency onto the ground, or into any body of water, or into any container on the State's Right-of-Way. In the event of spillage of regulated materials, the City will immediately notify the State's Authorized Representative in writing and will provide for cleanup of the spilled material and any materials contaminated by the spillage in accordance with all applicable federal, state, and local laws and regulations, at the sole expense of the City.

REVISION 4. Add the following Articles 6.5, Shared Use Paths, 6.6, State Right-of-Way Access, and 6.7, Environmental, regarding County maintenance:

- 6.5 Shared Use Paths.** The County will own and provide routine and minor maintenance of the shared use path construction on State Right-of-Way as shown on Exhibit E – Shared Use Paths Ownership and Maintenance. Routine and minor maintenance may include, but are not limited to, snow and ice control/removal, sweeping and debris removal, patching, crack repair, replacement of failing section(s) of pavement, vegetation control, signing, pavement markings, and any other maintenance activities necessary to perpetuate the shared use path in a safe, usable, and aesthetically acceptable condition as determined by the State's District Maintenance Engineer and all applicable laws including, but not limited to, the Americans with Disabilities Act. If the County fails to perform its maintenance services under this Agreement in compliance with applicable laws, the State will provide the County with a notice of non-compliance. Within three business days of sending the notice of non-compliance, the State's District Maintenance Engineer and the County Engineer will meet to discuss the County's performance of maintenance and decide upon next steps to remedy any non-compliant performance. If the parties cannot agree upon a remedy, the State may perform such obligation and the County will reimburse the State for the cost thereof plus 10 percent of such cost for overhead and supervision within 30 days of receipt of the State's invoice. The State and the County agree that full pavement replacement is outside of routine and minor maintenance, and the State and the County will share in the cost of pavement replacement according to the State's Cost Participation and Maintenance Responsibilities with Local Units of Government Manual, as amended or revised.
- 6.6 State Right-of-Way Access.** The State authorizes the County to enter upon State Right-of-Way to perform the maintenance activities described in this Agreement. The County must notify and coordinate with the State's District Maintenance Engineer prior to accessing State Right-of-Way. While the County is occupying the State's Right-of-Way, they must comply with the approved traffic control plan and with applicable provisions of the Work Zone Field Handbook (<http://www.dot.state.mn.us/trafficeng/workzone/index.html>). All County personnel occupying the State's Right-of-Way must be provided with required reflective clothing and hats.
- 6.7 Environmental.** The County will not dispose of any materials regulated by any governmental or regulatory agency onto the ground, or into any body of water, or into any container on the State's Right-of-Way. In the event of spillage of regulated materials, the County will immediately notify the State's Authorized Representative in writing and will provide for cleanup of the spilled material and any materials contaminated by the spillage in accordance with all applicable federal, state, and local laws and regulations, at the sole expense of the County.

REVISION 5. Article 8, Bridge Ownership and Maintenance, is deleted in its entirety and replaced as follows:

8. Bridge Ownership and Maintenance

- 8.1 Bridge 02061 (CSAH 56/Ramsey Boulevard Over TH 10) and Bridge 02062 (CSAH 57/Sunfish Lake Boulevard Over TH 10)** The State will share ownership responsibilities for Bridges 02061 and 02062 with the County. The State will be listed as the owner of the bridges in the National Bridge Inspection Standards database. The State will perform or contract bridge inspections and major bridge maintenance and will invoice the County for 55 percent of the cost of these activities, including administrative costs, for Bridge 02061 and 58 percent of the cost, including administrative costs, for Bridge 02062. The County will be responsible for all CSAH 56 and CSAH 57 maintenance and minor bridge maintenance, except those items identified below, which are the City's and the State's responsibility.

- A. County Responsibilities**The County will be responsible for minor maintenance, which includes all non-structural maintenance activities on the bridges. The County will keep the roadways and bridges reasonably clear from ice, snow, litter, and debris and undertake proper and timely cleaning and ice and snow control measures when necessary. The County will be responsible for pavement markings, guardrail on the local roadway, graffiti removal that is visible from the local roadway, and non-structurally supported signing. The County will be responsible for oversize, overweight, and special use permits.

Future replacement of the bridge will be in accordance with the Cost Participation Policy.

- B. City Responsibilities**The City will be responsible for maintenance of any sidewalk and/or shared use paths on the bridges and approach panels, without any cost to the State. Maintenance includes, but is not limited to, snow, ice, debris, and graffiti removal, pavement marking maintenance, and signing maintenance. The City will own and maintain non-standard (aesthetic) elements such as decorative lighting, ornamental metal railing and any elements later added to the bridge. Maintenance of the aesthetic elements includes, but is not limited to, graffiti removal and other routine maintenance activities necessary to perpetuate the aesthetic elements in a safe, usable, and aesthetically acceptable condition.
- C. State Responsibilities**The State will perform or contract structural inspections and major maintenance of the bridges and will invoice the County for the cost of those activities at the cost sharing percentages defined above. . Major maintenance includes all structural related maintenance, including expansion joint flushing, deck crack sealing, painting, overlays, redecking and rehabilitation of the bridge, concrete bridge approach panels, and structurally-supported signing on the bridge. The State will be responsible for maintenance of all guardrails on TH 10 below the bridges, roadway signing that is attached to the bridges for the purpose of TH 10 traffic, non-ornamental fencing on the Trunk Highway Right-of-Way, and graffiti removal within the control of access below the bridges. The State will determine the safe load rating for the bridges. The State will provide emergency response for traffic hits and restitution from insurance companies or private parties who have damaged the bridges.

The terms of the Original Agreement are expressly reaffirmed and are incorporated by reference. Except as amended herein, the terms and conditions of the Original Agreement and all previous amendments remain in full force and effect.

(The remainder of this page has been intentionally left blank.)

STATE ENCUMBRANCE VERIFICATION

Individual certifies that funds have been encumbered as required by Minnesota Statutes § 16A.15 and 16C.05.

Signed: _____

Date: _____

SWIFT Purchase Order: 3000710184

ANOKA COUNTY

The undersigned certify that they have lawfully executed this contract on behalf of the Governmental Unit as required by applicable charter provisions, resolutions, or ordinances.

By: _____
(Chair, Anoka County Board of Commissioners)

Date: _____

By: _____
(Anoka County Administrator)

Date: _____

Recommended for Approval:

By: _____
(Anoka County Engineer)

Date: _____

Approved as to form:

By: _____
(Assistant Anoka County Attorney)

Date: _____

DEPARTMENT OF TRANSPORTATION

Recommended for Approval:

By: _____
(District Engineer)

Date: _____

Approved:

By: _____
(State Design Engineer)

Date: _____

COMMISSIONER OF ADMINISTRATION

By: _____
(With Delegated Authority)

Date: _____

CITY OF RAMSEY

The undersigned certify that they have lawfully executed this contract on behalf of the Governmental Unit as required by applicable charter provisions, resolutions, or ordinances.

By: _____

Title: _____

Date: _____

By: _____

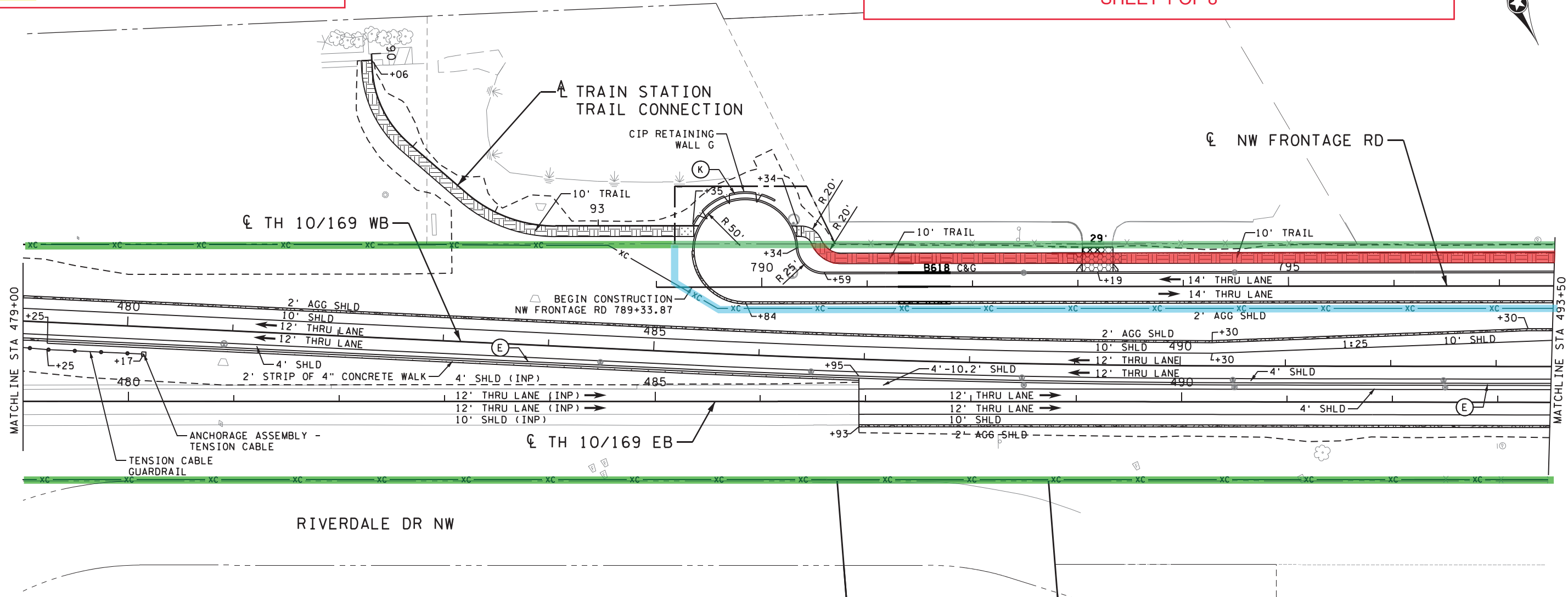
Title: _____

Date: _____

LEGEND

- Existing MnDOT RW
- New MnDOT RW
- City of Ramsey Ownership & Maintenance
- Anoka County Ownership & Maintenance

EXHIBIT E
SHARED USE PATHS OWNERSHIP AND MAINTENANCE
 AGREEMENT 1052605
 ANOKA COUNTY AND CITY OF RAMSEY
 SHEET 1 OF 8



LEGEND

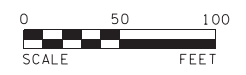
- | | | | |
|--|---|--|--------------------------------|
| | 4" CONCRETE WALK | | TRAFFIC FLOW |
| | 6" CONCRETE WALK | | TRAFFIC BARRIER DESIGN TYPE 31 |
| | CONCRETE CURB RAMP WALK | | PROPOSED CHAIN LINK FENCE |
| | 6" CONCRETE DRIVEWAY PAVEMENT | | PAVEMENT SECTION TRANSITION |
| | 7" CONCRETE WALK (TRUCK APRON) | | EXISTING PERM EASEMENT |
| | 8" CONCRETE DRIVEWAY PAVEMENT | | EXISTING RR RIGHT-OF-WAY |
| | BITUMINOUS COMMERCIAL DRIVEWAY/PARKING LOT PAVEMENT | | EXISTING RIGHT-OF-WAY |
| | 3" BITUMINOUS WALK | | PROPOSED RIGHT-OF-WAY |
| | AGGREGATE SURFACING (CV) CLASS 2 | | TEMPORARY EASEMENT |
| | | | PERMANENT EASEMENT |
| | | | CONSTRUCTION LIMITS |
| | | | STORM SEWER STRUCTURE |

CONSTRUCTION NOTES:

- SEE INTERSECTION DETAIL SHEETS FOR INTERSECTION, SIDEWALK, DRIVEWAY AND PEDESTRIAN RAMP DETAILS.
- SEE ACCESS ROAD PLAN FOR ACCESS ROAD ALIGNMENTS, PROFILES, AND ADDITIONAL DESIGN INFORMATION.
- SEE TURF ESTABLISHMENT, EROSION CONTROL, AND SUPERELEVATION PLAN FOR SUPERELEVATION AND PAVEMENT CROSS SLOPE TRANSITIONS.

SHEET NOTES:

- (E) CONCRETE MEDIAN BARRIER DESIGN SINGLE SLOPE TYPE 42 A, MNDOT STANDARD PLAN (5-297.681).
- (K) 36" TYPE P-1, (TL-2) BARRIER CONCRETE (3S52) & ORNAMENTAL METAL RAILING TYPE SPECIAL PC (SEE MSE RETAINING WALL PLAN FOR DETAILS).



12224 NICOLLET AVENUE
 BURNSVILLE, MINNESOTA 55337
 Phone: (952) 890-0509
 Email: Burnsville@bolton-menk.com
 www.bolton-menk.com

REV.	BY	DATE

I HEREBY CERTIFY THAT THIS PLAN, SPECIFICATION, OR REPORT WAS PREPARED BY ME OR UNDER MY DIRECT SUPERVISION AND THAT I AM A DULY LICENSED PROFESSIONAL ENGINEER UNDER THE LAWS OF THE STATE OF MINNESOTA.

Benjamin A. Ulrich
 BENJAMIN A. ULRICH
 LIC. NO. 59444 DATE 03-08-2023

DESIGNED: BAW
 DRAWN: TWB
 CHECKED: BAW

S.P. 0202-116 (TH10), S.P. 002-596-026, S.P. 002-656-001, S.P. 002-657-003, S.P. 199-113-003, S.P. 199-115-006
 TH 10/169 IMPROVEMENTS
 CONSTRUCTION PLAN

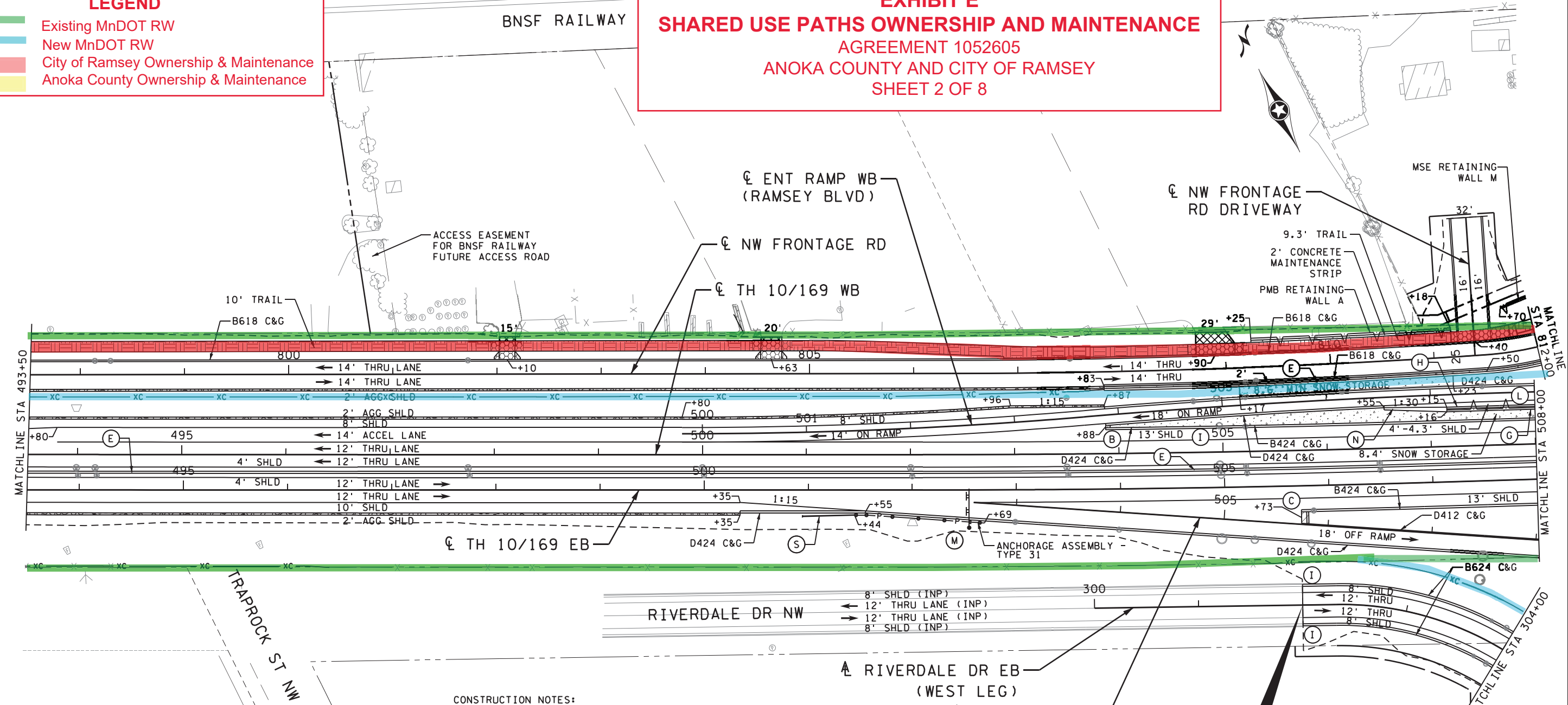
SHEET 232 OF 685

bmi.tbi
pdf-B and W.pltctfg
6:27:28 PM
denaki
6/1/2023

LEGEND

- Existing MnDOT RW
- New MnDOT RW
- City of Ramsey Ownership & Maintenance
- Anoka County Ownership & Maintenance

EXHIBIT E
SHARED USE PATHS OWNERSHIP AND MAINTENANCE
 AGREEMENT 1052605
 ANOKA COUNTY AND CITY OF RAMSEY
 SHEET 2 OF 8



LEGEND

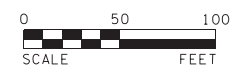
	4" CONCRETE WALK		TRAFFIC FLOW
	6" CONCRETE WALK		TRAFFIC BARRIER DESIGN TYPE 31
	CONCRETE CURB RAMP WALK		PROPOSED CHAIN LINK FENCE
	6" CONCRETE DRIVEWAY PAVEMENT		PAVEMENT SECTION TRANSITION
	7" CONCRETE WALK (TRUCK APRON)		EXISTING PERM EASEMENT
	8" CONCRETE DRIVEWAY PAVEMENT		EXISTING RR RIGHT-OF-WAY
	BITUMINOUS COMMERCIAL DRIVEWAY/PARKING LOT PAVEMENT		EXISTING RIGHT-OF-WAY
	3" BITUMINOUS WALK		PROPOSED RIGHT-OF-WAY
	AGGREGATE SURFACING (CV) CLASS 2		TEMPORARY EASEMENT
			PERMANENT EASEMENT
			CONSTRUCTION LIMITS
			STORM SEWER STRUCTURE

- CONSTRUCTION NOTES:**
- SEE INTERSECTION DETAIL SHEETS FOR INTERSECTION, SIDEWALK, DRIVEWAY AND PEDESTRIAN RAMP DETAILS.
 - SEE ACCESS ROAD PLAN FOR ACCESS ROAD ALIGNMENTS, PROFILES, AND ADDITIONAL DESIGN INFORMATION.
 - SEE TURF ESTABLISHMENT, EROSION CONTROL, AND SUPERELEVATION PLAN FOR SUPERELEVATION AND PAVEMENT CROSS SLOPE TRANSITIONS.

- SHEET NOTES:**
- (B) CONCRETE ENTRANCE NOSE STANDARD PLATE 7107. (PAID FOR AS 6" CONCRETE WALK)
 - (C) CONCRETE EXIT NOSE, SEE MISCELLANEOUS DETAILS. (PAID FOR AS 6" CONCRETE WALK)
 - (E) CONCRETE MEDIAN BARRIER DESIGN SINGLE SLOPE TYPE 42 A, MNDOT STANDARD PLAN (5-297.681).
 - (G) CONCRETE MEDIAN BARRIER SPECIAL (SEE MSE RETAINING WALL PLAN FOR DETAILS).
 - (H) 36" TYPE P-4, (TL-4) BARRIER CONCRETE (3552) (SEE MSE RETAINING WALL PLAN FOR DETAILS).

- REGIONAL PARK TRAIL**
- (I) 10' CURB TYPE TRANSITION.
 - (L) MOMENT SLAB (SEE MSE RETAINING WALL PLAN FOR DETAILS).
 - (M) OVERHEAD SIGN LOCATION (SEE SIGNING PLANS FOR PANEL AND STRUCTURAL DETAILS).
 - (N) SEE MSE RETAINING WALL DETAILS FOR BARRIER/WALL TRANSITION.
 - (S) END TREATMENT - TANGENT TERMINAL, MNDOT STANDARD PLAN (5-297.612).

bmi,tbl
pdf-B and W.pltctfg
12:37:03 PM
Tombu
5/3/2023



BOLTON & MENK

12224 NICOLLET AVENUE
 BURNSVILLE, MINNESOTA 55337
 Phone: (952) 890-0509
 Email: Burnsville@bolton-menk.com
 www.bolton-menk.com

REV. BY DATE

I HEREBY CERTIFY THAT THIS PLAN, SPECIFICATION, OR REPORT WAS PREPARED BY ME OR UNDER MY DIRECT SUPERVISION AND THAT I AM A DULY LICENSED PROFESSIONAL ENGINEER UNDER THE LAWS OF THE STATE OF MINNESOTA.

Benjamin A. Ulrich
 BENJAMIN A. ULRICH
 LIC. NO. 59444 DATE 03-08-2023

DESIGNED: BAU
 DRAWN: TWB
 CHECKED: BAU

S.P. 0202-116 (TH10), S.P. 002-596-026, S.P. 002-656-001, S.P. 002-657-003, S.P. 199-113-003, S.P. 199-115-006
 TH 10/169 IMPROVEMENTS
 CONSTRUCTION PLAN

SHEET 233 OF 685

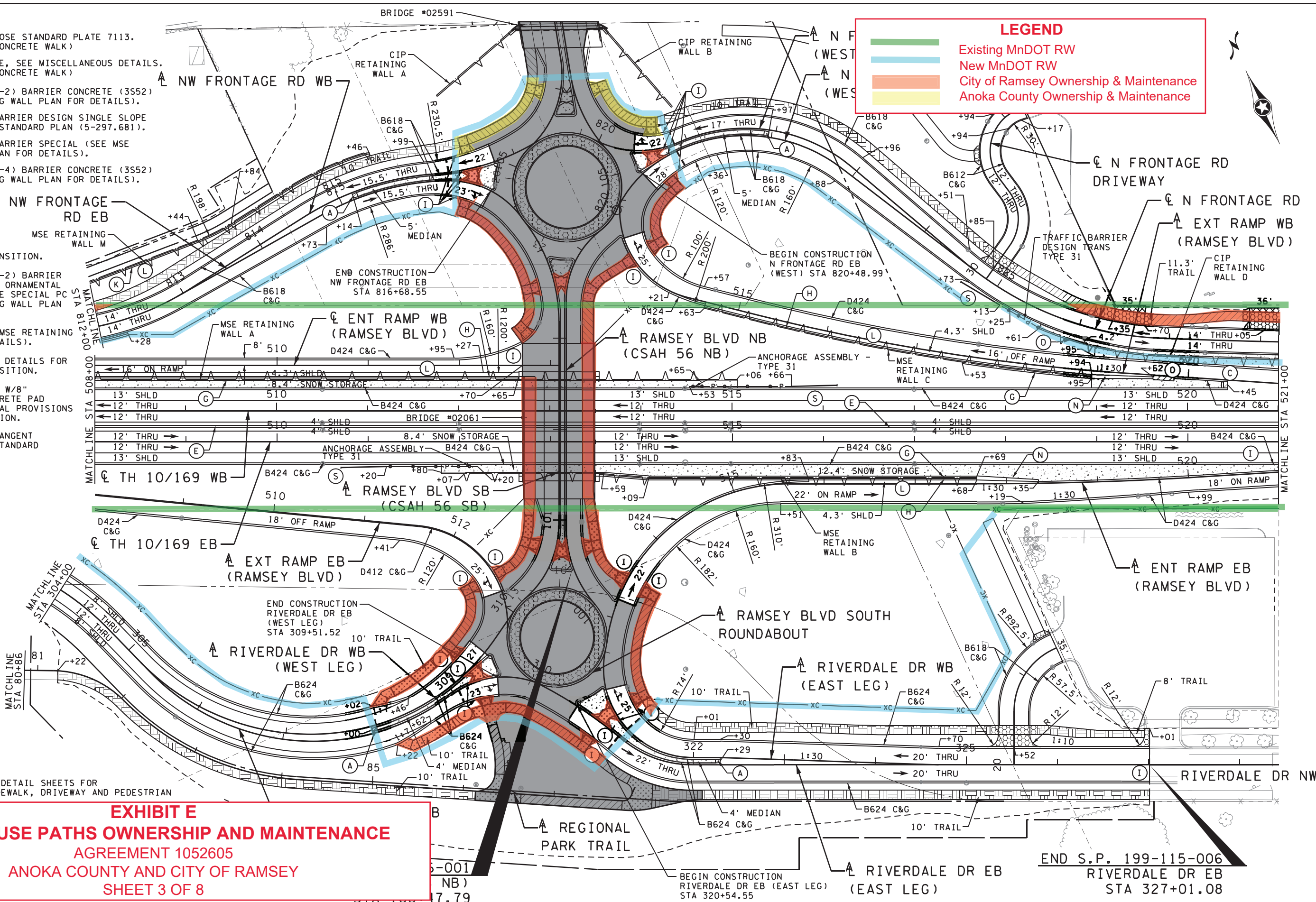
SHEET NOTES:

- (A) CONCRETE MEDIAN NOSE STANDARD PLATE 7113. (PAID FOR AS 6" CONCRETE WALK)
- (C) CONCRETE EXIT NOSE, SEE MISCELLANEOUS DETAILS. (PAID FOR AS 6" CONCRETE WALK)
- (D) 36" TYPE P-1, (TL-2) BARRIER CONCRETE (3S52) (SEE MSE RETAINING WALL PLAN FOR DETAILS).
- (E) CONCRETE MEDIAN BARRIER DESIGN SINGLE SLOPE TYPE 42 A, MNDOT STANDARD PLAN (5-297.681).
- (G) CONCRETE MEDIAN BARRIER SPECIAL (SEE MSE RETAINING WALL PLAN FOR DETAILS).
- (H) 36" TYPE P-4, (TL-4) BARRIER CONCRETE (3S52) (SEE MSE RETAINING WALL PLAN FOR DETAILS).

- (I) 10' CURB TYPE TRANSITION.
- (K) 36" TYPE P-1, (TL-2) BARRIER CONCRETE (3S52) & ORNAMENTAL METAL RAILING TYPE SPECIAL PC (SEE MSE RETAINING WALL PLAN FOR DETAILS).
- (L) MOMENT SLAB (SEE MSE RETAINING WALL PLAN FOR DETAILS).
- (N) SEE MISCELLANEOUS DETAILS FOR BARRIER/WALL TRANSITION.
- (O) IMPACT ATTENUATOR W/8" UNREINFORCED CONCRETE PAD (TL-3). SEE SPECIAL PROVISIONS FOR MORE INFORMATION.
- (S) END TREATMENT - TANGENT TERMINAL, MNDOT STANDARD PLAN (5-297.612).

LEGEND

- Existing MnDOT RW
- New MnDOT RW
- City of Ramsey Ownership & Maintenance
- Anoka County Ownership & Maintenance

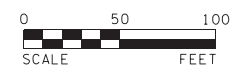


RAMSEY BLVD CONSTRUCTION

CONSTRUCTION NOTES:

- 1. SEE INTERSECTION DETAIL SHEETS FOR INTERSECTION, SIDEWALK, DRIVEWAY AND PEDESTRIAN RAMP DETAILS.

EXHIBIT E
SHARED USE PATHS OWNERSHIP AND MAINTENANCE
 AGREEMENT 1052605
 ANOKA COUNTY AND CITY OF RAMSEY
 SHEET 3 OF 8



12224 NICOLLET AVENUE
 BURNSVILLE, MINNESOTA 55337
 Phone: (952) 890-0509
 Email: Burns@bolton-menk.com
 www.bolton-menk.com

REV.	BY	DATE

I HEREBY CERTIFY THAT THIS PLAN, SPECIFICATION, OR REPORT WAS PREPARED BY ME OR UNDER MY DIRECT SUPERVISION AND THAT I AM A DULY LICENSED PROFESSIONAL ENGINEER UNDER THE LAWS OF THE STATE OF MINNESOTA.

Benjamin A. Ulrich
 BENJAMIN A. ULRICH
 LIC. NO. 59444 DATE 03-08-2023

DESIGNED
 BAW
 DRAWN
 TWE
 CHECKED
 BAW

S.P. 0202-116 (TH10), S.P. 002-596-026, S.P. 002-656-001,
 S.P. 002-657-003, S.P. 199-113-003, S.P. 199-115-006
 TH 10/169 IMPROVEMENTS
 CONSTRUCTION PLAN

SHEET
 234
 OF
 685

bmi.tbl
pdf-B and W.pltctg
12:37:05 PM
Tombu
5/3/2023

LEGEND

	4" CONCRETE WALK		TRAFFIC FLOW
	6" CONCRETE WALK		TRAFFIC BARRIER DESIGN TYPE 31
	CONCRETE CURB RAMP WALK		PROPOSED CHAIN LINK FENCE
	6" CONCRETE DRIVEWAY PAVEMENT		PAVEMENT SECTION TRANSITION
	7" CONCRETE WALK (TRUCK APRON)		EXISTING PERM EASEMENT
	8" CONCRETE DRIVEWAY PAVEMENT		EXISTING RIGHT-OF-WAY
	BITUMINOUS COMMERCIAL DRIVEWAY/PARKING LOT PAVEMENT		PROPOSED RIGHT-OF-WAY
	3" BITUMINOUS WALK		TEMPORARY EASEMENT
	AGGREGATE SURFACING (CV) CLASS 2		PERMANENT EASEMENT
			CONSTRUCTION LIMITS
			STORM SEWER STRUCTURE

CONSTRUCTION NOTES:

1. SEE INTERSECTION DETAIL SHEETS FOR INTERSECTION, SIDEWALK, DRIVEWAY AND PEDESTRIAN RAMP DETAILS.
2. SEE ACCESS ROAD PLAN FOR ACCESS ROAD ALIGNMENTS, PROFILES, AND ADDITIONAL DESIGN INFORMATION.
3. SEE TURF ESTABLISHMENT, EROSION CONTROL, AND SUPERELEVATION PLAN FOR SUPERELEVATION AND PAVEMENT CROSS SLOPE TRANSITIONS.

SHEET NOTES:

- (B) CONCRETE ENTRANCE NOSE STANDARD PLATE 7107. (PAID FOR AS 6" CONCRETE WALK)
- (D) 36" TYPE P-1, (TL-2) BARRIER CONCRETE (3S52) (SEE MSE RETAINING WALL PLAN FOR DETAILS).
- (E) CONCRETE MEDIAN BARRIER DESIGN SINGLE SLOPE TYPE 42 A, MNDOT STANDARD PLAN (5-297.681).
- (M) OVERHEAD SIGN LOCATION (SEE SIGNING PLANS FOR PANEL AND STRUCTURAL DETAILS).
- (S) END TREATMENT - TANGENT TERMINAL, MNDOT STANDARD PLAN (5-297.612).

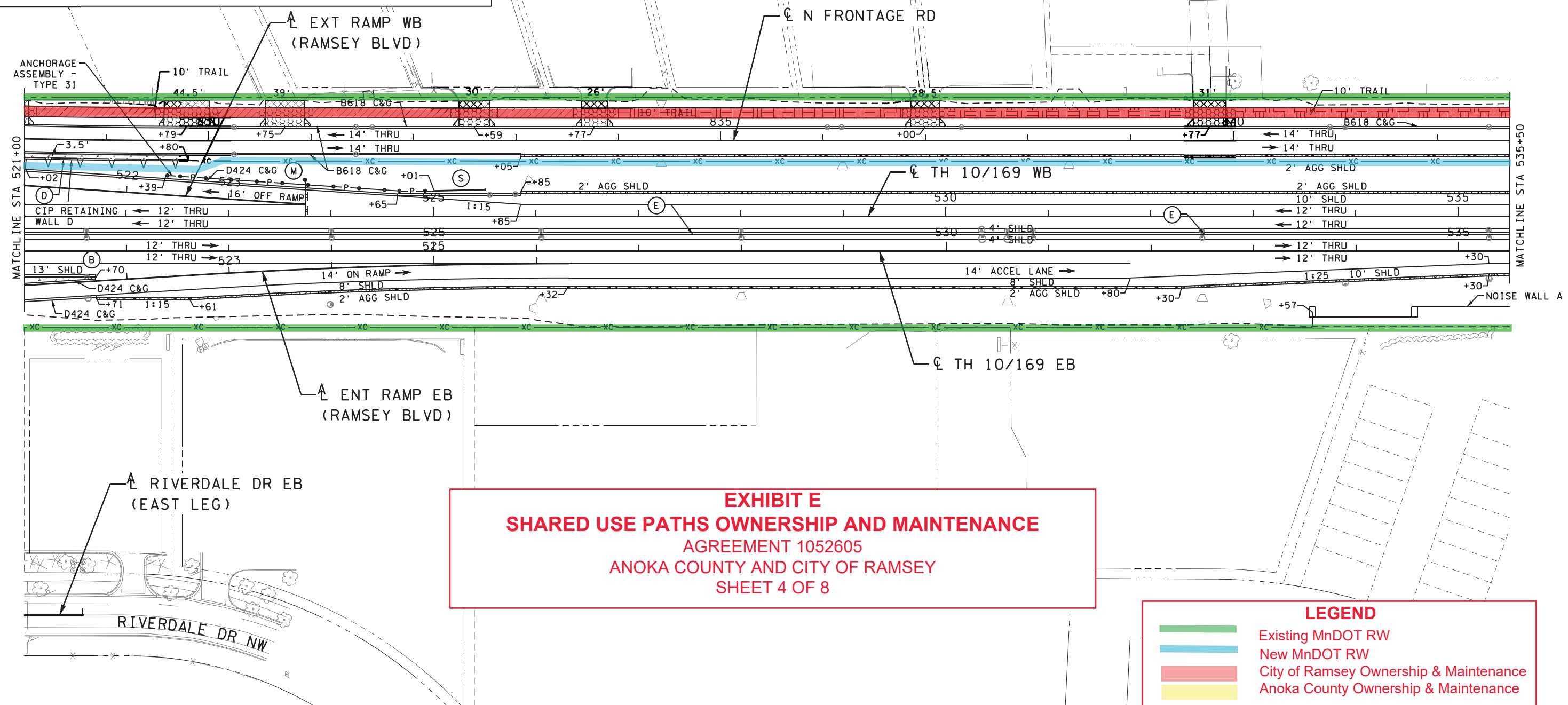


EXHIBIT E
SHARED USE PATHS OWNERSHIP AND MAINTENANCE
 AGREEMENT 1052605
 ANOKA COUNTY AND CITY OF RAMSEY
 SHEET 4 OF 8

LEGEND

	Existing MnDOT RW
	New MnDOT RW
	City of Ramsey Ownership & Maintenance
	Anoka County Ownership & Maintenance

bmi.tbl
pdf-B and W.pltctfg
12:37:06 PM
Tombu
5/3/2023



12224 NICOLLET AVENUE
 BURNSVILLE, MINNESOTA 55337
 Phone: (952) 890-0509
 Email: Burnsville@bolton-menk.com
 www.bolton-menk.com

REV.	BY	DATE

I HEREBY CERTIFY THAT THIS PLAN, SPECIFICATION, OR REPORT WAS PREPARED BY ME OR UNDER MY DIRECT SUPERVISION AND THAT I AM A DULY LICENSED PROFESSIONAL ENGINEER UNDER THE LAWS OF THE STATE OF MINNESOTA.

Benjamin A. Ulrich
 BENJAMIN A. ULRICH
 LIC. NO. 59444 DATE 03-08-2023

DESIGNED BAU
DRAWN TWE
CHECKED BAU

S.P. 0202-116 (TH10), S.P. 002-596-026, S.P. 002-656-001,
 S.P. 002-657-003, S.P. 199-113-003, S.P. 199-115-006
 TH 10/169 IMPROVEMENTS
 CONSTRUCTION PLAN

SHEET
235
OF
685

LEGEND

	4" CONCRETE WALK		TRAFFIC FLOW
	6" CONCRETE WALK		TRAFFIC BARRIER DESIGN TYPE 31
	CONCRETE CURB RAMP WALK		PROPOSED CHAIN LINK FENCE
	6" CONCRETE DRIVEWAY PAVEMENT		PAVEMENT SECTION TRANSITION
	7" CONCRETE WALK (TRUCK APRON)		EXISTING PERM EASEMENT
	8" CONCRETE DRIVEWAY PAVEMENT		EXISTING RR RIGHT-OF-WAY
	BITUMINOUS COMMERCIAL DRIVEWAY/PARKING LOT PAVEMENT		EXISTING RIGHT-OF-WAY
	3" BITUMINOUS WALK		PROPOSED RIGHT-OF-WAY
	AGGREGATE SURFACING (CV) CLASS 2		TEMPORARY EASEMENT
			PERMANENT EASEMENT
			CONSTRUCTION LIMITS
			STORM SEWER STRUCTURE

CONSTRUCTION NOTES:

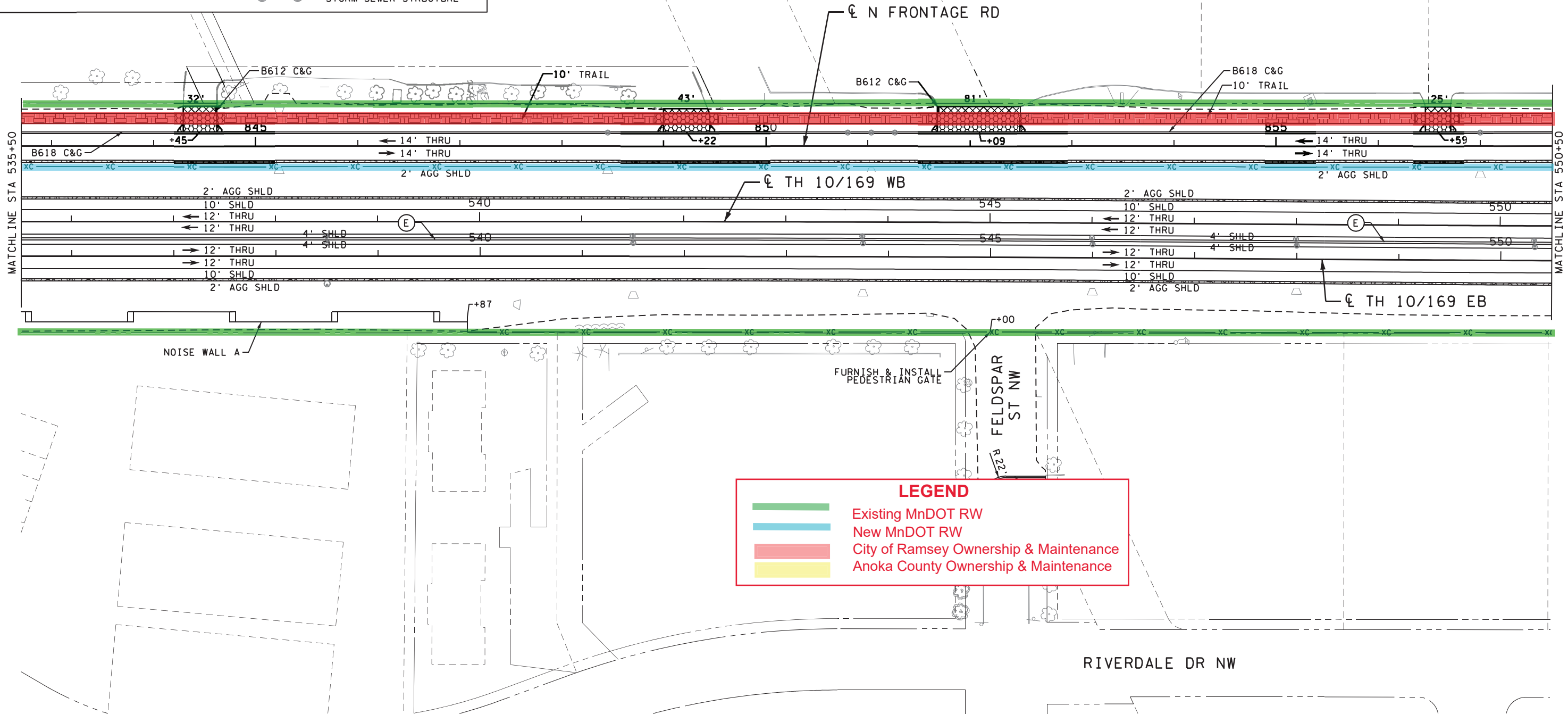
1. SEE INTERSECTION DETAIL SHEETS FOR INTERSECTION, SIDEWALK, DRIVEWAY AND PEDESTRIAN RAMP DETAILS.
2. SEE ACCESS ROAD PLAN FOR ACCESS ROAD ALIGNMENTS, PROFILES, AND ADDITIONAL DESIGN INFORMATION.
3. SEE TURF ESTABLISHMENT, EROSION CONTROL, AND SUPERELEVATION PLAN FOR SUPERELEVATION AND PAVEMENT CROSS SLOPE TRANSITIONS.

SHEET NOTES:

- (E) CONCRETE MEDIAN BARRIER DESIGN SINGLE SLOPE TYPE 42 A, MNDOT STANDARD PLAN (5-297.681).



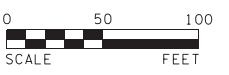
EXHIBIT E
SHARED USE PATHS OWNERSHIP AND MAINTENANCE
 AGREEMENT 1052605
 ANOKA COUNTY AND CITY OF RAMSEY
 SHEET 5 OF 8



LEGEND

- Existing MnDOT RW
- New MnDOT RW
- City of Ramsey Ownership & Maintenance
- Anoka County Ownership & Maintenance

bmi.tbl
pdf-B and W.pltctfg
12:37:07 PM
Tombu
5/3/2023



BOLTON & MENK
 12224 NICOLLET AVENUE
 BURNSVILLE, MINNESOTA 55337
 Phone: (952) 890-0509
 Email: Burns@bolton-menk.com
 www.bolton-menk.com

REV.	BY	DATE

I HEREBY CERTIFY THAT THIS PLAN, SPECIFICATION, OR REPORT WAS PREPARED BY ME OR UNDER MY DIRECT SUPERVISION AND THAT I AM A DULY LICENSED PROFESSIONAL ENGINEER UNDER THE LAWS OF THE STATE OF MINNESOTA.

Benjamin A. Ulrich
 BENJAMIN A. ULRICH
 LIC. NO. 59444 DATE 03-08-2023

DESIGNED BAU	S.P. 0202-116 (TH10), S.P. 002-596-026, S.P. 002-656-001, S.P. 002-657-003, S.P. 199-113-003, S.P. 199-115-006	SHEET 236 OF 685
DRAWN TWE		
CHECKED BAU		
TH 10/169 IMPROVEMENTS		
CONSTRUCTION PLAN		

LEGEND

	4" CONCRETE WALK		TRAFFIC FLOW
	6" CONCRETE WALK		TRAFFIC BARRIER DESIGN TYPE 31
	CONCRETE CURB RAMP WALK		PROPOSED CHAIN LINK FENCE
	6" CONCRETE DRIVEWAY PAVEMENT		PAVEMENT SECTION TRANSITION
	7" CONCRETE WALK (TRUCK APRON)		EXISTING PERM EASEMENT
	8" CONCRETE DRIVEWAY PAVEMENT		EXISTING RIGHT-OF-WAY
	BITUMINOUS COMMERCIAL DRIVEWAY/PARKING LOT PAVEMENT		PROPOSED RIGHT-OF-WAY
	3" BITUMINOUS WALK		TEMPORARY EASEMENT
	AGGREGATE SURFACING (CV) CLASS 2		PERMANENT EASEMENT
			CONSTRUCTION LIMITS
			STORM SEWER STRUCTURE

CONSTRUCTION NOTES:

1. SEE INTERSECTION DETAIL SHEETS FOR INTERSECTION, SIDEWALK, DRIVEWAY AND PEDESTRIAN RAMP DETAILS.
2. SEE ACCESS ROAD PLAN FOR ACCESS ROAD ALIGNMENTS, PROFILES, AND ADDITIONAL DESIGN INFORMATION.
3. SEE TURF ESTABLISHMENT, EROSION CONTROL, AND SUPERELEVATION PLAN FOR SUPERELEVATION AND PAVEMENT CROSS SLOPE TRANSITIONS.

SHEET NOTES:

- (B) CONCRETE ENTRANCE NOSE STANDARD PLATE 7107. (PAID FOR AS 6" CONCRETE WALK)
- (E) CONCRETE MEDIAN BARRIER DESIGN SINGLE SLOPE TYPE 42 A, MNDOT STANDARD PLAN (5-297.681).
- (M) OVERHEAD SIGN LOCATION (SEE SIGNING PLANS FOR PANEL AND STRUCTURAL DETAILS).
- (S) END TREATMENT - TANGENT TERMINAL, MNDOT STANDARD PLAN (5-297.612).

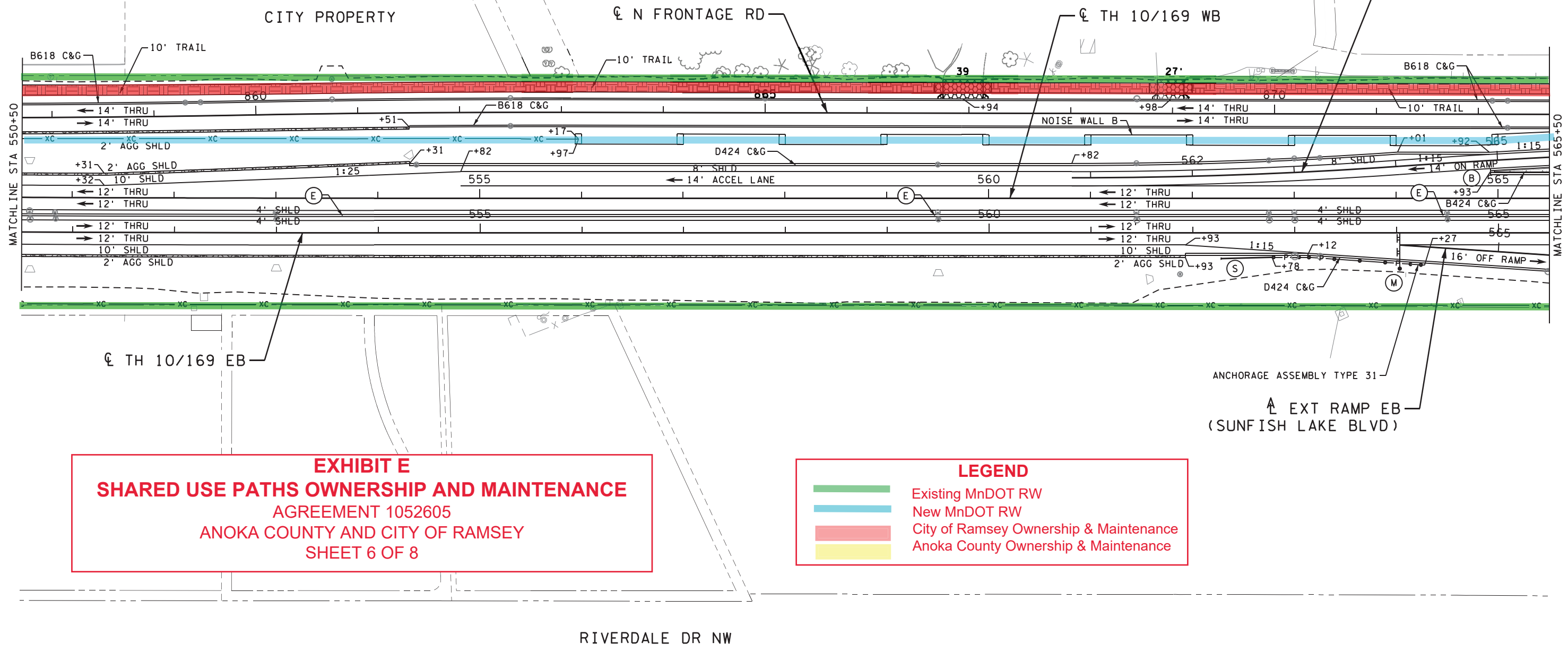
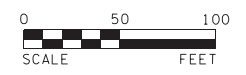


EXHIBIT E
SHARED USE PATHS OWNERSHIP AND MAINTENANCE
 AGREEMENT 1052605
 ANOKA COUNTY AND CITY OF RAMSEY
 SHEET 6 OF 8

LEGEND

	Existing MnDOT RW
	New MnDOT RW
	City of Ramsey Ownership & Maintenance
	Anoka County Ownership & Maintenance

bmi.tbl
pdf-B and W.pltctfg
12:37:08 PM
Tombu
5/3/2023



12224 NICOLLET AVENUE
 BURNSVILLE, MINNESOTA 55337
 Phone: (952) 890-0509
 Email: Burnsville@bolton-menk.com
 www.bolton-menk.com

REV.	BY	DATE

I HEREBY CERTIFY THAT THIS PLAN, SPECIFICATION, OR REPORT WAS PREPARED BY ME OR UNDER MY DIRECT SUPERVISION AND THAT I AM A DULY LICENSED PROFESSIONAL ENGINEER UNDER THE LAWS OF THE STATE OF MINNESOTA.

Benjamin A. Ulrich
 BENJAMIN A. ULRICH
 LIC. NO. 59444 DATE 03-08-2023

DESIGNED BAU
DRAWN TWE
CHECKED BAU

S.P. 0202-116 (TH10), S.P. 002-596-026, S.P. 002-656-001,
 S.P. 002-657-003, S.P. 199-113-003, S.P. 199-115-006
 TH 10/169 IMPROVEMENTS
 CONSTRUCTION PLAN

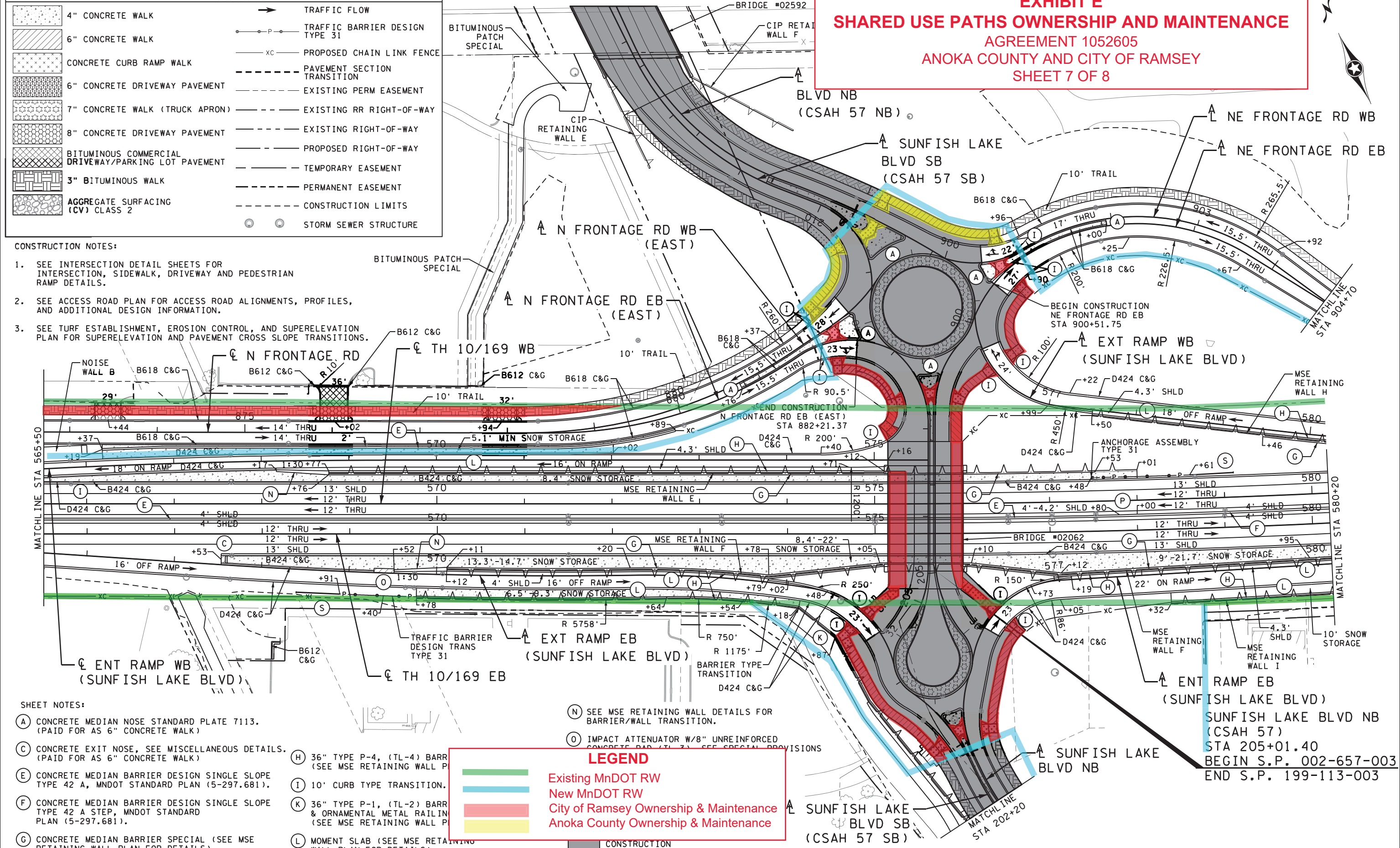
SHEET
 237
 OF
 685

LEGEND

	4" CONCRETE WALK		TRAFFIC FLOW
	6" CONCRETE WALK		TRAFFIC BARRIER DESIGN TYPE 31
	CONCRETE CURB RAMP WALK		PROPOSED CHAIN LINK FENCE
	6" CONCRETE DRIVEWAY PAVEMENT		PAVEMENT SECTION TRANSITION
	7" CONCRETE WALK (TRUCK APRON)		EXISTING PERM EASEMENT
	8" CONCRETE DRIVEWAY PAVEMENT		EXISTING RIGHT-OF-WAY
	BITUMINOUS COMMERCIAL DRIVEWAY/PARKING LOT PAVEMENT		PROPOSED RIGHT-OF-WAY
	3" BITUMINOUS WALK		TEMPORARY EASEMENT
	AGGREGATE SURFACING (CV) CLASS 2		PERMANENT EASEMENT
			CONSTRUCTION LIMITS
			STORM SEWER STRUCTURE

EXHIBIT E
SHARED USE PATHS OWNERSHIP AND MAINTENANCE
 AGREEMENT 1052605
 ANOKA COUNTY AND CITY OF RAMSEY
 SHEET 7 OF 8

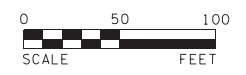
- CONSTRUCTION NOTES:**
- SEE INTERSECTION DETAIL SHEETS FOR INTERSECTION, SIDEWALK, DRIVEWAY AND PEDESTRIAN RAMP DETAILS.
 - SEE ACCESS ROAD PLAN FOR ACCESS ROAD ALIGNMENTS, PROFILES, AND ADDITIONAL DESIGN INFORMATION.
 - SEE TURF ESTABLISHMENT, EROSION CONTROL, AND SUPERELEVATION PLAN FOR SUPERELEVATION AND PAVEMENT CROSS SLOPE TRANSITIONS.



- SHEET NOTES:**
- (A) CONCRETE MEDIAN NOSE STANDARD PLATE 7113. (PAID FOR AS 6" CONCRETE WALK)
 - (C) CONCRETE EXIT NOSE, SEE MISCELLANEOUS DETAILS. (PAID FOR AS 6" CONCRETE WALK)
 - (E) CONCRETE MEDIAN BARRIER DESIGN SINGLE SLOPE TYPE 42 A, MNDOT STANDARD PLAN (5-297.681).
 - (F) CONCRETE MEDIAN BARRIER DESIGN SINGLE SLOPE TYPE 42 A STEP, MNDOT STANDARD PLAN (5-297.681).
 - (G) CONCRETE MEDIAN BARRIER SPECIAL (SEE MSE RETAINING WALL PLAN FOR DETAILS).
 - (H) 36" TYPE P-4, (TL-4) BARR (SEE MSE RETAINING WALL P...
 - (I) 10' CURB TYPE TRANSITION.
 - (K) 36" TYPE P-1, (TL-2) BARR & ORNAMENTAL METAL RAILIN (SEE MSE RETAINING WALL P...
 - (L) MOMENT SLAB (SEE MSE RETAINING WALL PLAN FOR DETAILS).

LEGEND

- Existing MnDOT RW
- New MnDOT RW
- City of Ramsey Ownership & Maintenance
- Anoka County Ownership & Maintenance



BOLTON & MENK
 12224 NICOLLET AVENUE
 BURNSVILLE, MINNESOTA 55337
 Phone: (952) 890-0509
 Email: Burns@bolton-menk.com
 www.bolton-menk.com

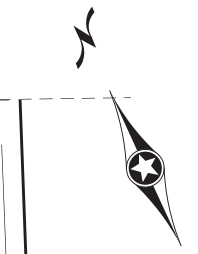
REV. BY DATE
 I HEREBY CERTIFY THAT THIS PLAN, SPECIFICATION, OR REPORT WAS PREPARED BY ME OR UNDER MY DIRECT SUPERVISION AND THAT I AM A DULY LICENSED PROFESSIONAL ENGINEER UNDER THE LAWS OF THE STATE OF MINNESOTA.

 BENJAMIN A. ULRICH
 LIC. NO. 59444 DATE 03-08-2023

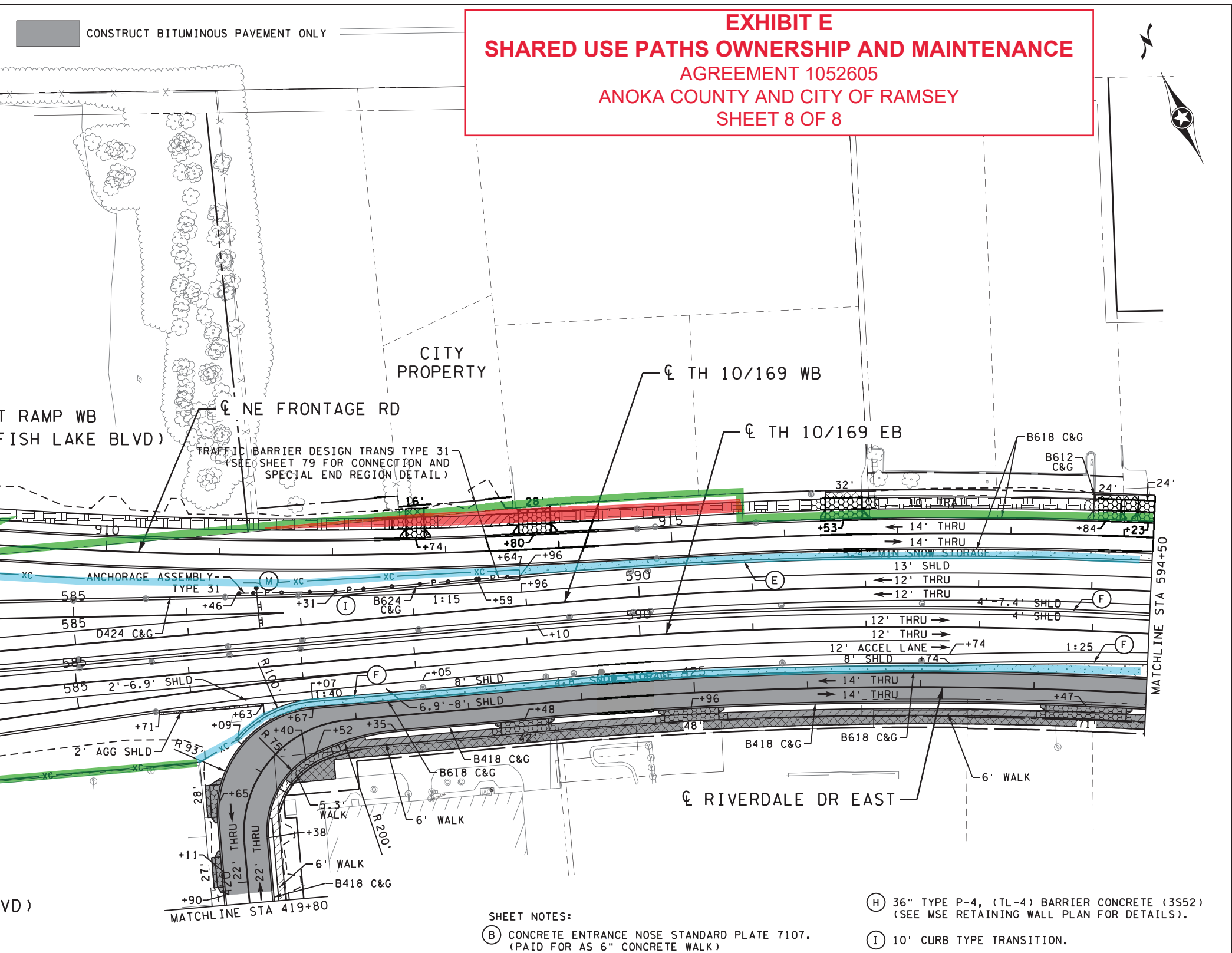
DESIGNED: BAU
 DRAWN: TWE
 CHECKED: BAU
 S.P. 0202-116 (TH10), S.P. 002-596-026, S.P. 002-656-001, S.P. 002-657-003, S.P. 199-113-003, S.P. 199-115-006
 TH 10/169 IMPROVEMENTS
 CONSTRUCTION PLAN
 SHEET 238 OF 685

bmi.tdi
 pdf-B and W.plt.ctg
 12:37:10 PM
 Tombu
 5/3/2023

EXHIBIT E
SHARED USE PATHS OWNERSHIP AND MAINTENANCE
 AGREEMENT 1052605
 ANOKA COUNTY AND CITY OF RAMSEY
 SHEET 8 OF 8



LEGEND	
	4" CONCRETE WALK
	6" CONCRETE WALK
	CONCRETE CURB RAMP WALK
	6" CONCRETE DRIVEWAY PAVEMENT
	7" CONCRETE WALK (TRUCK APRON)
	8" CONCRETE DRIVEWAY PAVEMENT
	BITUMINOUS COMMERCIAL DRIVEWAY/PARKING LOT PAVEMENT
	3" BITUMINOUS WALK
	AGGREGATE SURFACING (CV) CLASS 2
	TRAFFIC FLOW
	TRAFFIC BARRIER DESIGN TYPE 31
	PROPOSED CHAIN LINK FENCE
	PAVEMENT SECTION TRANSITION
	EXISTING PERM EASEMENT
	EXISTING RR RIGHT-OF-WAY
	EXISTING RIGHT-OF-WAY
	PROPOSED RIGHT-OF-WAY
	TEMPORARY EASEMENT
	PERMANENT EASEMENT
	CONSTRUCTION LIMITS
	STORM SEWER STRUCTURE



CONSTRUCTION NOTES:

- SEE INTERSECTION OF TH 10/169 AND RIVERDALE DR EAST FOR INTERSECTION, SIDE RAMP DETAILS.
- SEE ACCESS ROAD PLAN AND ADDITIONAL DETAILS FOR RIVERDALE DR EAST.
- SEE TURF ESTABLISHMENT PLAN FOR SUPERELEVATION AND PAVEMENT CROSS SLOPE TRANSITIONS.

LEGEND

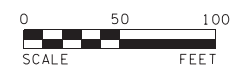
Existing MnDOT RW

New MnDOT RW

City of Ramsey Ownership & Maintenance

Anoka County Ownership & Maintenance

- SHEET NOTES:**
- (H) 36" TYPE P-4, (TL-4) BARRIER CONCRETE (3S52) (SEE MSE RETAINING WALL PLAN FOR DETAILS).
 - (B) CONCRETE ENTRANCE NOSE STANDARD PLATE 7107. (PAID FOR AS 6" CONCRETE WALK)
 - (C) CONCRETE EXIT NOSE, SEE MISCELLANEOUS DETAILS. (PAID FOR AS 6" CONCRETE WALK)
 - (E) CONCRETE MEDIAN BARRIER DESIGN SINGLE SLOPE TYPE 42 A, MNDOT STANDARD PLAN (5-297.681).
 - (F) CONCRETE MEDIAN BARRIER DESIGN SINGLE SLOPE TYPE 42 A STEP, MNDOT STANDARD PLAN (5-297.681).
 - (G) CONCRETE MEDIAN BARRIER SPECIAL (SEE MSE RETAINING WALL PLAN FOR DETAILS).
 - (I) 10' CURB TYPE TRANSITION.
 - (L) MOMENT SLAB (SEE MSE RETAINING WALL PLAN FOR DETAILS).
 - (M) OVERHEAD SIGN LOCATION (SEE SIGNING PLANS FOR PANEL AND STRUCTURAL DETAILS).
 - (N) SEE MSE RETAINING WALL DETAILS FOR BARRIER/WALL TRANSITION.
 - (O) IMPACT ATTENUATOR W/8" UNREINFORCED CONCRETE PAD (TL-3). SEE SPECIAL PROVISIONS FOR MORE INFORMATION.



BOLTON & MENK

12224 NICOLLET AVENUE
 BURNSVILLE, MINNESOTA 55337
 Phone: (952) 890-0509
 Email: Burns@bolton-menk.com
 www.bolton-menk.com

REV. BY DATE

I HEREBY CERTIFY THAT THIS PLAN, SPECIFICATION, OR REPORT WAS PREPARED BY ME OR UNDER MY DIRECT SUPERVISION AND THAT I AM A DULY LICENSED PROFESSIONAL ENGINEER UNDER THE LAWS OF THE STATE OF MINNESOTA.

Benjamin A. Ulrich

BENJAMIN A. ULRICH
 LIC. NO. 59444 DATE 03-08-2023

DESIGNED BAU	S.P. 0202-116 (TH10), S.P. 002-596-026, S.P. 002-656-001, S.P. 002-657-003, S.P. 199-113-003, S.P. 199-115-006	SHEET 239
DRAWN TWE		OF 685
CHECKED BAU		CONSTRUCTION PLAN

bmi.tbl
pdf-B and W.pltctfg
12:37:12 PM
Tombu
5/3/2023