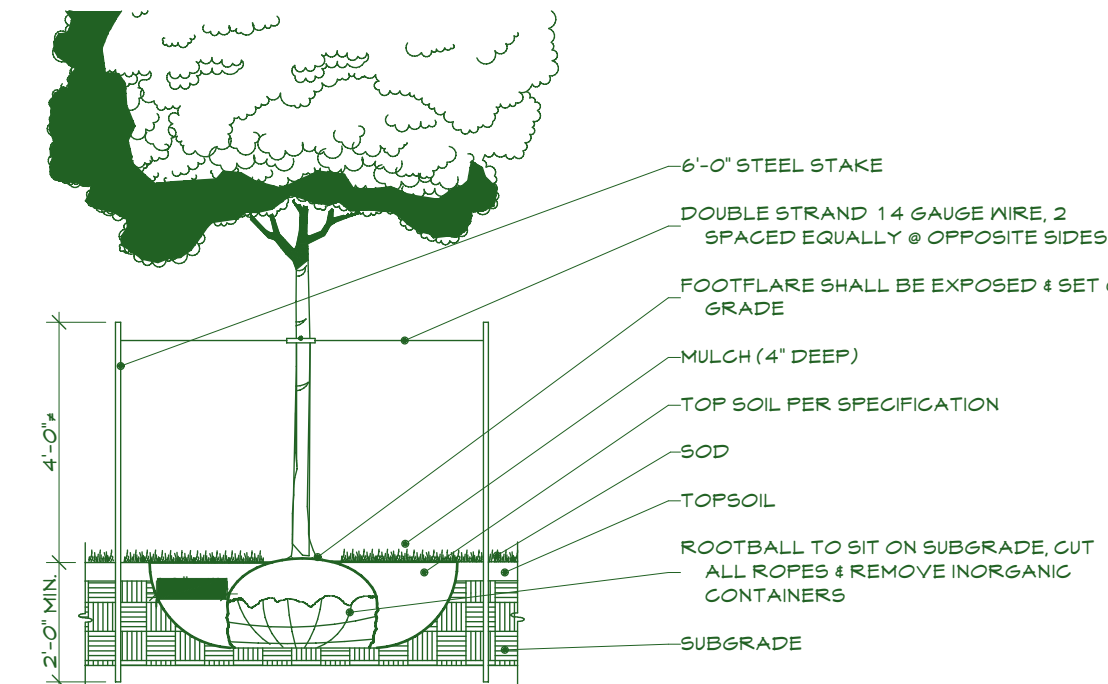


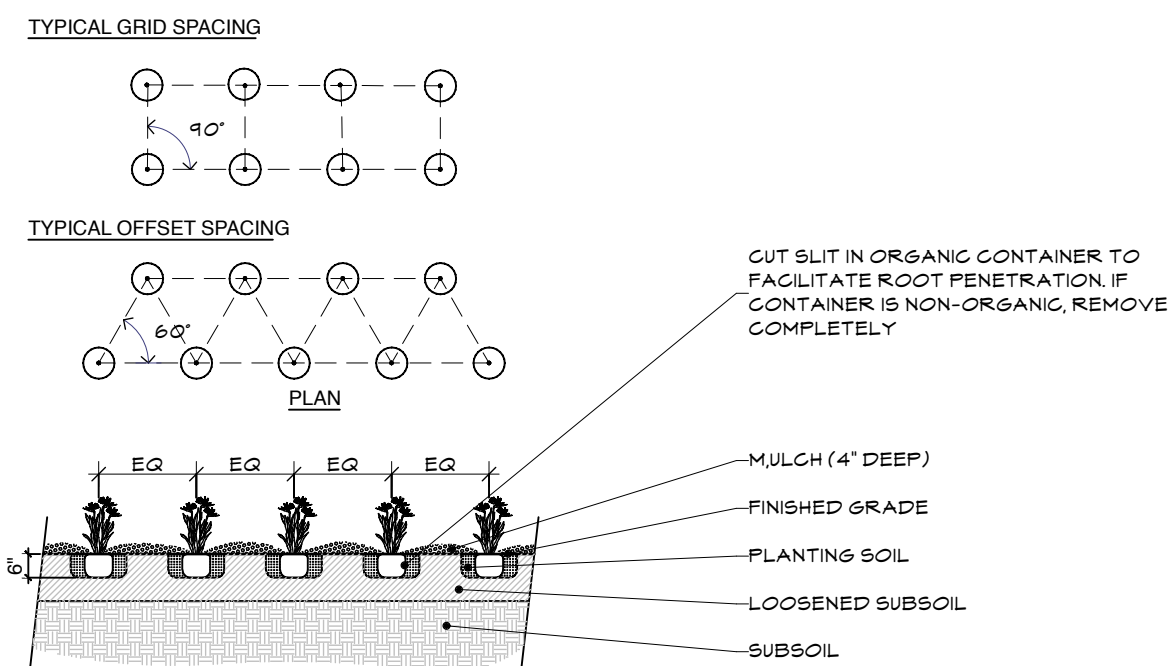
Coniferous Tree

SCALE: 1" = 20'



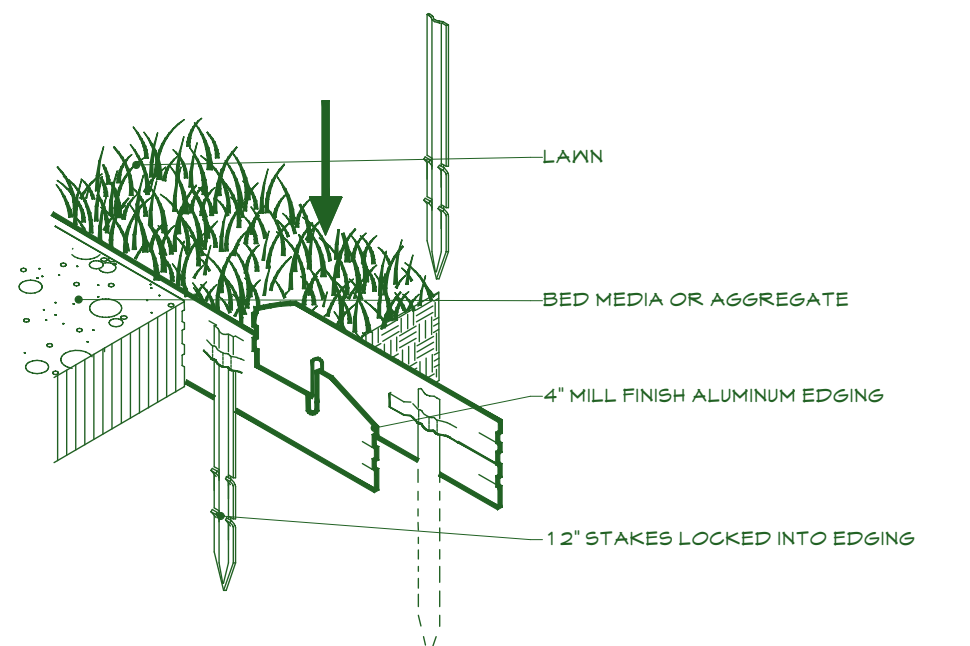
Deciduous Tree

SCALE: 1" = 20'



Perennials

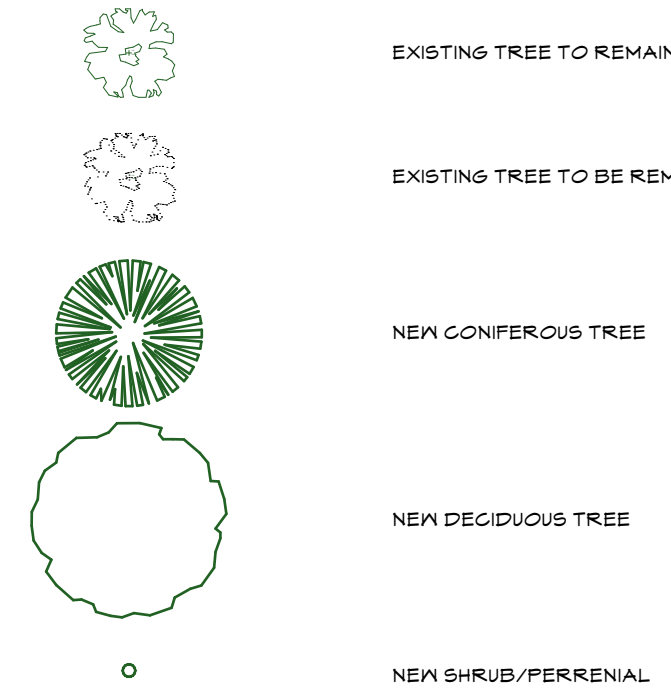
SCALE: 1" = 20'



Aluminum Edge

SCALE: 1" = 20'

LANDSCAPE SYMBOL LEGEND



LANDSCAPE SUMMARY

DESIGN AND DEVELOPMENT STANDARDS Section 106-670

Existing tree quantity:	29	292'
Trees to be removed:	18	284'
Trees to remain:	1	8'
Removal thresholds:		205'
Deficit:		79'
Reforestation requirement (79'x1.25'):		99'
Proposed:		40'
Restoration (\$9x\$125.00):	\$7,375.00	
REQUIRED:		
Trees:	16 (800/50)	
Shrubs:	32 (8000/300)	
PROPOSED:		
Trees:	16	
Shrubs:	18	

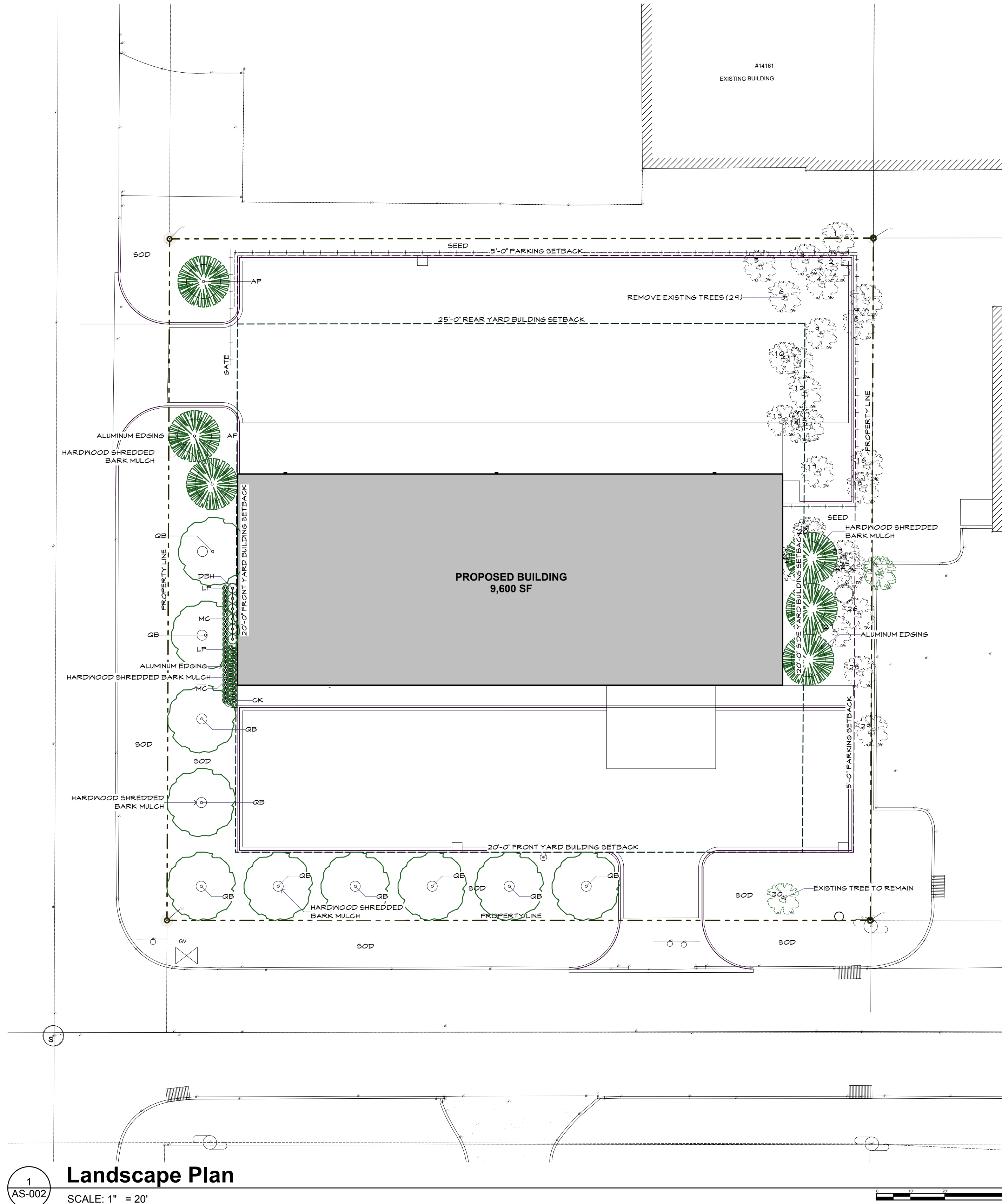
LANDSCAPING SCHEDULE

KEY	BOTANICAL / COMMON NAME	SIZE	QTY	TOTAL INCHES
DECIDUOUS TREE				
QB	QUERCUS BICOLOR / SHAMP WHITE OAK	2.5' BB	10	25
CONIFEROUS				
AP	PICEA ABIES / NORWAY SPRUCE	8/2.5' BB	6	15
SHRUBS				
LP	SPIRAEA JAPONICA 'LITTLE PRINCESS'	2.4'	12	
DBH	DIERVILLA IONICERA 'DWARF BUSH HONEYSUCKLE'	2.4'	6	
PERENNIALS				
CK	CALAMAGROSTIS X ACUTIFLORA 'KARL FOERSTER' / FEATHER REED GRASS	#1 CONT.	21	
MC	MOLINA CAERULEA 'VARIEGATA' / VARIEGATED MOOR GRASS	#1 CONT.	13	

EXISTING	QTY	SIZE	COND.	STATUS	REASON
1	OAK	11"	GOOD	REMOVED	MASS GRADING
2	OAK	11"	GOOD	REMOVED	MASS GRADING
3	OAK	8"	GOOD	REMOVED	MASS GRADING
4	OAK	6"	GOOD	REMOVED	MASS GRADING
5	ELM	19"	GOOD	REMOVED	MASS GRADING
6	OAK	16"	GOOD	REMOVED	MASS GRADING
7	OAK	6"	GOOD	REMOVED	MASS GRADING
8	HAPLE	4"	GOOD	REMOVED	MASS GRADING
9	MAPLE	7"	GOOD	REMOVED	MASS GRADING
10	OAK	20"	GOOD	REMOVED	MASS GRADING
11	OAK	10"	GOOD	REMOVED	MASS GRADING
12	ELM	6"	GOOD	REMOVED	MASS GRADING
13	OAK	18"	GOOD	REMOVED	MASS GRADING
14	OAK	18"	GOOD	REMOVED	MASS GRADING
15	OAK	7"	GOOD	REMOVED	MASS GRADING
16	OAK	11"	GOOD	REMOVED	MASS GRADING
17	OAK	7"	GOOD	REMOVED	MASS GRADING
18	OAK	7"	GOOD	REMOVED	MASS GRADING
19	OAK	7"	GOOD	REMOVED	MASS GRADING
20	OAK	6"	GOOD	REMOVED	MASS GRADING
21	OAK	5"	GOOD	REMOVED	MASS GRADING
22	OAK	6"	GOOD	REMOVED	MASS GRADING
23	OAK	6"	GOOD	REMOVED	MASS GRADING
24	ASH	6"	GOOD	REMOVED	MASS GRADING
25	ASH	4"	GOOD	REMOVED	MASS GRADING
26	OAK	6"	GOOD	REMOVED	MASS GRADING
27	OAK	6"	GOOD	REMOVED	MASS GRADING
28	OAK	15"	GOOD	REMOVED	MASS GRADING
29	OAK	18"	GOOD	REMOVED	MASS GRADING
30	OAK	8"	GOOD	PRESERVED	MASS GRADING
		2.4'		28.4' REMOVED	
		205 (70%)		8' PRESERVED	

LANDSCAPE PLAN NOTES

- THE CONTRACTOR SHALL CONTACT Gopher One Call TO VERIFY THE LOCATIONS OF ALL UNDERGROUND UTILITIES PRIOR TO THE INSTALLATION OF ANY PLANT OR LANDSCAPING.
- THE CONTRACTOR SHALL PROVIDE A TWO-YEAR GUARANTEE OF ALL PLANT MATERIALS. THE GUARANTEE BEGINS ON THE DATE OF THE OWNER'S WRITTEN ACCEPTANCE OF THE INITIAL PLANTING. REPLACEMENT PLANT MATERIALS SHALL ALSO HAVE A TWO-YEAR GUARANTEE COMMENCING UPON PLANTING.
- ALL DISTURBED AREAS THAT ARE NOT IMPROVED WITH IMPERVIOUS SURFACE SHALL RECEIVE 4" OF TOPSOIL WITH NOT MORE THAN 35% SAND CONTENT.
- ALL DISTURBED AREAS ARE TO BE SEEDED UNLESS NOTED OTHERWISE.
- SOD TO BE STANDARD MINNESOTA GROWN. ALL SOD AREAS SHALL BE PREPARED WITH 4" OF TOPSOIL AND RAKED TO REMOVE DEBRIS AND ENSURE DRAINAGE. SLOPES OF 3:1 OR GREATER SHALL BE STAKED.
- ALL PLANTS TO BE SPECIMEN GRADE AND SHALL ADHERE TO BUT IS NOT LIMITED BY THE FOLLOWING STANDARDS: ALL PLANTS TO BE MINNESOTA-GROWN AND/OR HARDY. ALL PLANTS SHALL BE FREE FROM DISEASE, PESTS, WOUNDS, SCARS, ETC. ALL PLANTS SHALL BE FREE FROM NOTICEABLE GAPS, HOLES OR DEFORMITIES. ALL PLANTS SHALL HAVE HEAVY, HEALTHY BRANCHING AND LEAFING. CONIFEROUS TREES SHALL HAVE AN ESTABLISHED MAIN LEADER AND A HEIGHT-TO-WIDTH RATIO OF NO LESS THAN 5:5.
- PLANTS MUST MEET AMERICAN STANDARD FOR NURSERY STOCK REQUIREMENTS FOR SIZE AND TYPE SPECIFIED.
- PRUNE PLANTS AS NECESSARY - PER STANDARD NURSERY PRACTICE AND TO CORRECT POOR BRANCHING.
- PLANTS TO BE INSTALLED AS PER STANDARD AN PLANTING PRACTICES.
- USE MINIMUM 1.2" LOAM PLANTING SOIL ON TREES AND 6" ON SHRUBS (SIDES AND BOTTOM OF HOLE).
- STAKING OF TREES OPTIONAL; REPOSITION IF NOT PLUMB AFTER ONE YEAR.
- WRAP ALL SMOOTH-BARKED TREES-FASTEN TOP AND BOTTOM. REMOVE BY APRIL 1.
- OPEN THE TOP OF THE BURLAP ON BB MATERIALS; REMOVE THE POT ON POTTED PLANTS; SPLIT AND BREAK APART FEAT POTS.
- PLANTS SHALL BE IMMEDIATELY PLANTED UPON ARRIVAL AT SITE. PROPERLY HEEL-IN MATERIALS IF NECESSARY; TEMPORARY ONLY.
- SIX INCHES OF SHREDDED HARDWOOD BARK MULCH SHALL BE USED AROUND ALL TREES WITHIN TURF AREAS.
- ALL SHRUB PLANTING BEDS (WITHIN SODDED AREAS) SHALL HAVE WEED BARRIER FABRIC, 4" OF SHREDDED HARDWOOD BARK MULCH (EXCEPT AS NOTED) AND VALLEY-VIEW BLACK DIAMOND OR EQUAL POLY EDGING. THE EDGING SHALL BE PLACED WITH SMOOTH CURVES AND AT LEAST 4" FROM THE CENTERS OF EVERGREEN TREES. PARKING LOT ISLANDS TO BE SEEDED. UTILIZE CURBS AND SIDEWALKS FOR EDGING WHERE POSSIBLE.
- ROCK MULCH 4" DEEP SHALL BE PROVIDED IN ALL PLANTING BEDS ADJACENT TO SIDEWALKS AND DRIVEWAYS. ROCK MULCH SHALL BE WASHED, 3/4"-1 1/2".
- ACTUAL LOCATION OF PLANT MATERIAL IS SUBJECT TO FIELD AND SITE CONDITIONS.
- THE CONTRACTOR SHALL CONTACT Gopher State One Call (1-800-292-1166) TO VERIFY THE LOCATIONS OF ALL UNDERGROUND UTILITIES.
- CONTRACTOR SHALL PROVIDE NECESSARY WATERING OF PLANT MATERIALS UNTIL THE PLANT IS FULLY ESTABLISHED. THE OWNER WILL NOT PROVIDE WATER FOR THE CONTRACTOR.
- NO PLANT MATERIAL SUBSTITUTIONS WILL BE ACCEPTED UNLESS APPROVED BY THE ARCHITECT/CITY OF RAMSEY.



Landscape Plan

SCALE: 1" = 20'

Consultant

Certification
I hereby certify that this plan, specification, or report was prepared by me or under my direct supervision and that I am a duly Licensed Architect under the laws of the State of Minnesota.
Print Name: Lon Negen
Signature:

Date: 11/1/24 License No: 41402

AUTO REPAIR SHOP

6590 141st Avenue
NW
Ramsey, MN 55303

Revisions

MARK	DATE

COMM. NO.: 240124

ARCHITECT: L D N

DATE: 11/1/24

DRAWN BY: ---

The designs shown and described herein including all technical drawings, graphics, and models thereof, are proprietary and cannot be copied, duplicated or commercially exploited, in whole or in part, without the expressed written consent of Negen & Associates, Inc. These are available for limited review and evaluation by clients, consultants, contractors government agencies vendors and office personnel only in accordance with this notice.

© 2004-2024 Negen and Associates, St. Cloud, MN 56303

SD2.4 City Submittal

Landscape Plan

AS-002