

CALYX DESIGN GROUP
 Landscape Architecture - Planning
 475 Cleveland Avenue N. | Suite 101A | St. Paul, MN 55104
 telephone: 651.788.9018
 internet: www.calyxdesigngroup.com

I hereby certify that this plan, specification or other document was prepared by me or under my direct supervision and that I am a duly Licensed Professional Engineer in the State of Minnesota.
PRELIMINARY
 Print Name: _____ License No. 48922
 Signature: _____ Date: _____

WATERFRONT VILLAGE
 RAMSEY, MINNESOTA
PRELIMINARY LANDSCAPE PLAN
 FOR
CENTRA HOMES
 11460 ROBINSON DRIVE, COON RAPIDS, MN

DRAWN BY	BH
DATE	12/15/23
REVISIONS	
CAD FILE	24108-L
PROJECT NO.	24108
	L6.1

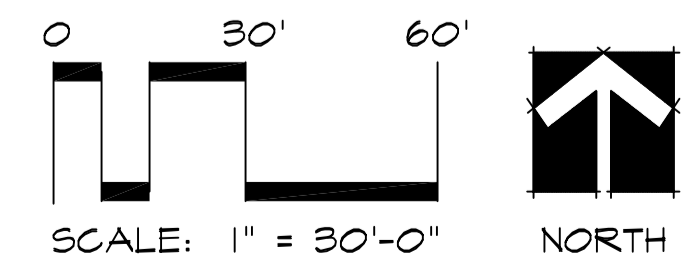
MUNICIPAL LANDSCAPE CALCULATIONS:

Minimum Planting Sizes
 Coniferous Trees: 5' Hgt.
 Ornamental Trees: 1.0" Cal.
 Shade/Deciduous Island Trees: 1.0" Cal.
 Shade/Deciduous Overstory Trees: 1.0" Cal.
 Deciduous Shrubs: 24"

City of Ramsey COR-4b Residential Units:
 One Overstory Tree Per 35 Feet of Street Frontage
 2,250 LF Public Street Facing Frontage = 64
 2,660LF Internal Roads X2 (Double-Loaded) / 35 = 152
 Development Front Yard Trees To Be Planted: 216
 Development Rear Yard & Buffer Trees To Be Planted: 41

GENERAL NOTES:

- Landscape contractor to provide a new irrigation layout plan for the property. See Landscape Notes.
- See Civil Engineer's plans for grading layout and requirements
- Contractor to coordinate any work in the right-of-way with City of Ramsey Public Works Department.
- Sod all disturbed areas except plant beds and areas noted to receive mulch or native seed.
- Place a minimum of 4" topsoil, with not more than 35% and content. Topsoil inspection is required prior to installing sod and trees.
- Refer to builder's specifications for additional requirements.
- See Sheet L6.4 for Landscape Details, Notes, Schedules, and Typical Foundation Planting Enlargement. Landscape contractor shall be responsible for determine their own plant quantities per unit during bidding.
- Landscape contractor is responsible for verification of soils and graded condition prior to mobilization and shall notify the General Contractor if earthwork is not acceptable. Landscape contractor is responsible for fine grading, or grade to within 1" of final set elevation.



See Sheet L6.4 for Planting Details, Notes, and Requirements

LANDSCAPE LAYOUT WEST:

1 - Changemark note #01 AM

Status as of 12/27/2023 10:38 AM

Type: Action

State: For Discussion

Created by: Adam Martin
On: 12/27/2023 10:38 AM
Type: Action
State: For Discussion

Clarify the need for stairs and jogs in each of the sidewalks that connect to Bunker Lake Blvd.

----- 0 Replies -----

2 - Changemark note #02 AM

Status as of 12/27/2023 10:38 AM

Type: Action

State: For Discussion

Created by: Adam Martin
On: 12/27/2023 10:38 AM
Type: Action
State: For Discussion

Four-sided architectural design will be needed on this unit.

----- 0 Replies -----

3 - Changemark note #03 AM

Status as of 12/27/2023 10:39 AM

Type: Action

State: For Discussion

Created by: Adam Martin
On: 12/27/2023 10:39 AM
Type: Action
State: For Discussion

To account for a prevalent northwest wind and traffic coming from Bunker Lake Blvd and Armstrong Blvd, please consider installing additional trees and shrubs here at the northwest corner of the development.

----- 0 Replies -----

4 - Identify Tree Species

Status as of 01/02/2024 12:18 PM

Type: Action

State: For Discussion

Created by: Chris Anderson
On: 01/02/2024 12:18 PM
Type: Action

State: For Discussion

Please label what each symbol is in terms of species. With the legend on a separate page, it is not very convenient trying to see which symbol represents what species.

----- 0 Replies -----

5 - Growing Space?

Status as of 01/02/2024 12:20 PM

Type: Action

State: For Discussion

Created by: Chris Anderson

On: 01/02/2024 12:20 PM

Type: Action

State: For Discussion

Is there sufficient growing space for these 2 trees? Especially once they reach mature size. Consider relocating them to behind the units.

----- 0 Replies -----

1 - Changemark note #01 AM

Status as of 12/27/2023 10:40 AM

Type: Action

State: For Discussion

Created by: Adam Martin
On: 12/27/2023 10:40 AM
Type: Action
State: For Discussion

Four-sided architectural design will be needed on this lot.

----- 0 Replies -----

2 - Changemark note #02 AM

Status as of 12/27/2023 10:40 AM

Type: Action

State: For Discussion

Created by: Adam Martin
On: 12/27/2023 10:40 AM
Type: Action
State: For Discussion

Four-sided architectural design will be needed on this lot.

----- 0 Replies -----

3 - Shift into Boulevard

Status as of 01/02/2024 12:58 PM

Type: Action

State: For Discussion

Created by: Chris Anderson
On: 01/02/2024 12:58 PM
Type: Action
State: For Discussion

This row of trees should be shifted into the boulevard along Zeolite St.

----- 0 Replies -----

4 - Growing Space

Status as of 01/02/2024 01:24 PM

Type: Action

State: For Discussion

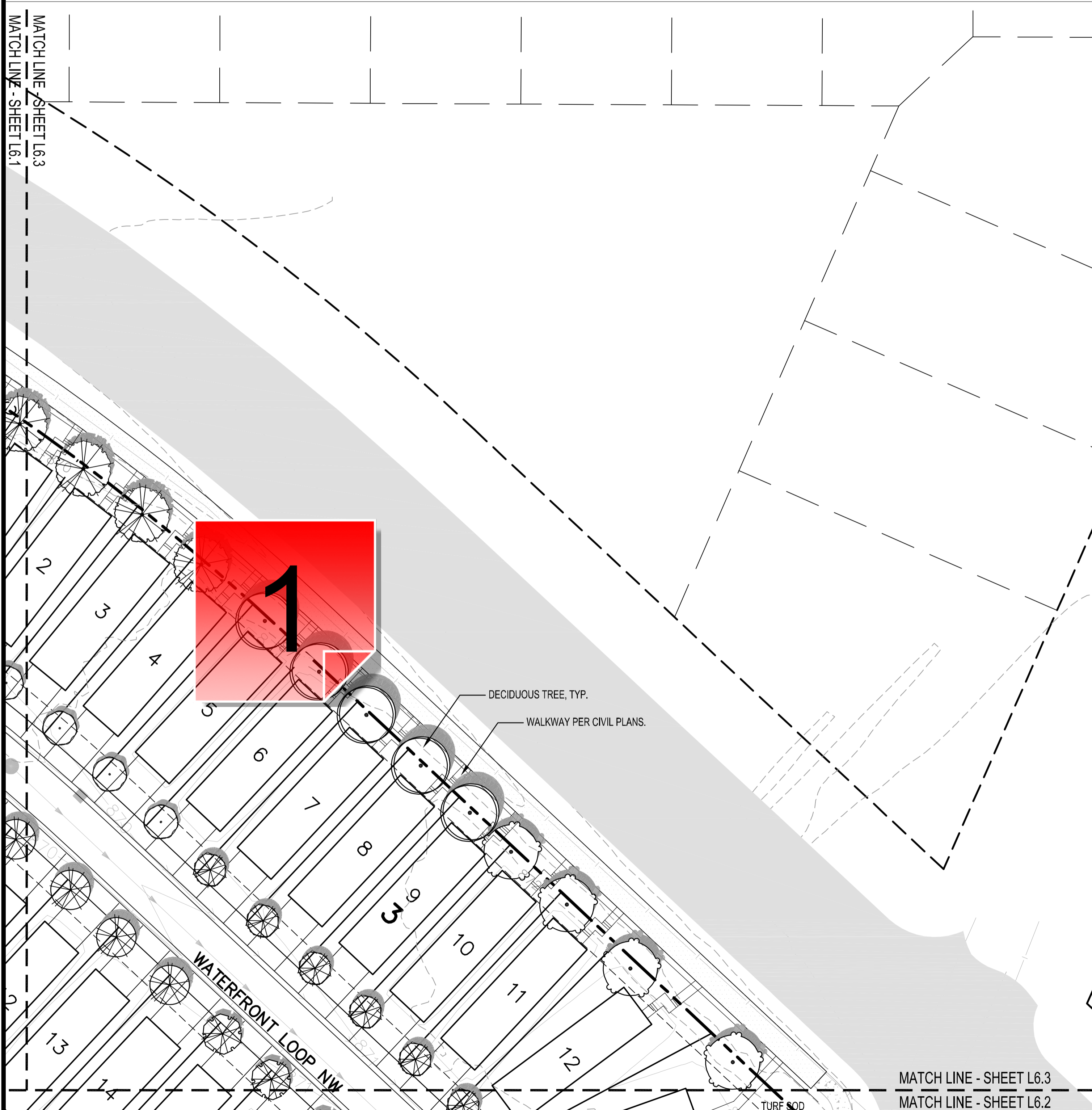
Created by: Chris Anderson
On: 01/02/2024 01:24 PM
Type: Action
State: For Discussion

When these trees are installed in the rear of these lots, make sure there is sufficient growing space so that at maturity, there is no conflict between trees and structures.

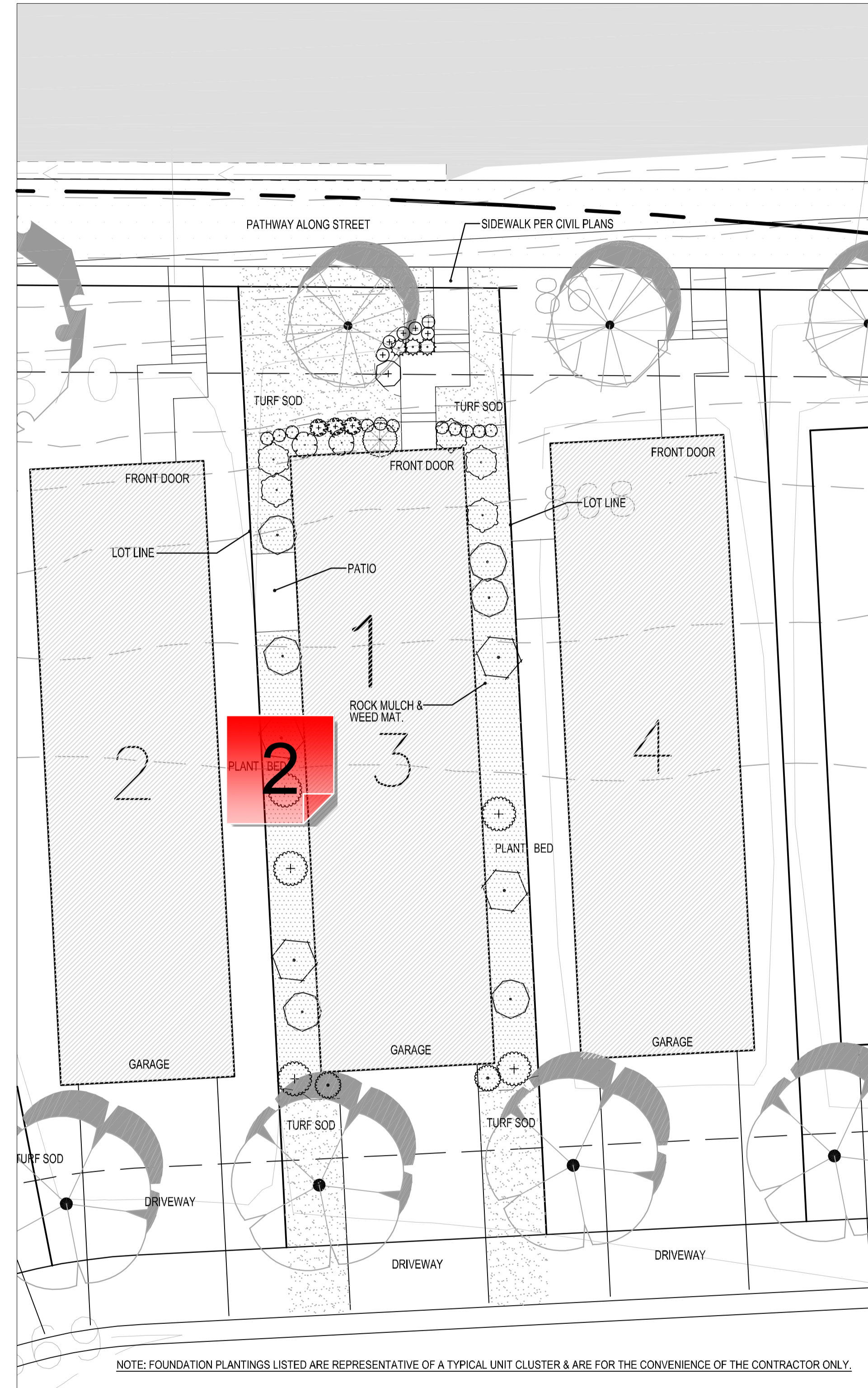
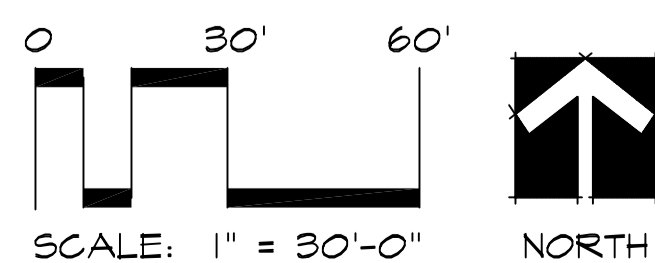
----- 0 Replies -----

GENERAL NOTES:

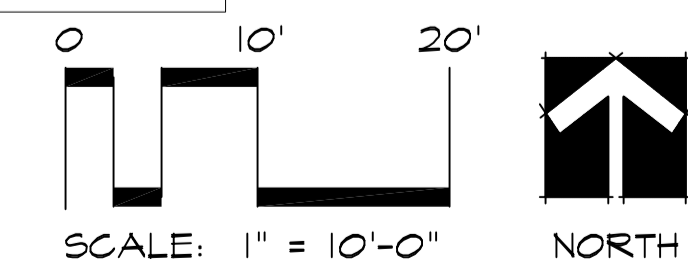
1. Landscape contractor to provide a new irrigation layout plan for the property. See Landscape Notes.
2. See Civil Engineer's plans for grading layout and requirements
3. Contractor to coordinate any work in the right-of-way with City of Ramsey Public Works Department.
4. Sod all disturbed areas except plant beds and areas noted to receive mulch or native seed.
5. Place a minimum of 4" topsoil, with not more than 35% and content. Topsoil inspection is required prior to installing sod and trees.
6. Refer to builder's specifications for additional requirements.
7. See Sheet L6.4 for Landscape Details, Notes, Schedules, and Typical Foundation Planting Enlargement. Landscape contractor shall be responsible for determine their own plant quantities per unit during bidding.
8. Landscape contractor is responsible for verification of soils and graded condition prior to mobilization and shall notify the General Contractor if earthwork is not acceptable. Landscape contractor is responsible for fine grading, or grade to within 1" of final set elevation.



LANDSCAPE LAYOUT EAST:



TYPICAL FOUNDATION PLANTING ENLARGEMENT:



NOTE: FOUNDATION PLANTINGS LISTED ARE REPRESENTATIVE OF A TYPICAL UNIT CLUSTER & ARE FOR THE CONVENIENCE OF THE CONTRACTOR ONLY.



See Sheet L6.4 for Planting Details, Notes, and Requirements

CALYX DESIGN GROUP
 Landscape Architecture - Planning
 475 Cleveland Avenue N. | Suite 101A | St. Paul, MN 55104
 telephone: 651.788.9018
 internet: www.calyxdesigngroup.com



I hereby certify that this plan, specification, or other document was prepared by me or under my direct supervision and that I am a duly Licensed Professional Engineer in the State of Minnesota.
 Print Name: Benjamin Berg, R.L.A.
 Signature: _____
 Date: _____
PRELIMINARY
 License No. 48924

WATERFRONT VILLAGE
 RAMSEY, MINNESOTA
PRELIMINARY LANDSCAPE PLAN
 FOR
CENTRA HOMES
 11460 ROBINSON DRIVE, COON RAPIDS, MN

DRAWN BY
 BH
 DATE
 12/15/23
 REVISIONS

CAD FILE
 24108-L
 PROJECT NO.
 24108
 L6.2

1 - Changemark note #01 AM

Status as of 12/27/2023 10:42 AM

Type: Action

State: For Discussion

Created by: Adam Martin
On: 12/27/2023 10:42 AM
Type: Action
State: For Discussion

As noted on other plan sheets, clarify the need for stairs and jogs on each of the sidewalks that connect to Bunker Lake Blvd.

----- 0 Replies -----

2 - Changemark note #02 AM

Status as of 12/27/2023 10:42 AM

Type: Action

State: For Discussion

Created by: Adam Martin
On: 12/27/2023 10:42 AM
Type: Action
State: For Discussion

Another item regarding the landscaping plans is the proposal to install plant beds, rock mulch, and weed mats in between each house. The Cottages at the COR had proposed commercial turf sod in between houses, but it was ultimately built with rock beds and a few shrubs instead. Please provide clarity on the landscaping in between units.

----- 0 Replies -----

1 - Landscape Maintenance Guarantee

Status as of 01/02/2024 12:06 PM

Type: Action

State: For Discussion

Created by: Chris Anderson

On: 01/02/2024 12:06 PM

Type: Action

State: For Discussion

The City's Development Agreement requires a 2-year warranty period from date of passing city's landscape inspection.

----- 0 Replies -----

2 - Substitutions and Plan Changes

Status as of 01/02/2024 12:07 PM

Type: Action

State: For Discussion

Created by: Chris Anderson

On: 01/02/2024 12:07 PM

Type: Action

State: For Discussion

Both species substitutions and plan changes require approval of city prior to installation. Update this note accordingly.

----- 0 Replies -----

3 - Irrigation System

Status as of 01/02/2024 12:09 PM

Type: Action

State: For Discussion

Created by: Chris Anderson

On: 01/02/2024 12:09 PM

Type: Action

State: For Discussion

Any irrigation system must include a rain sensor and some form of water efficient technology, such as a smart controller, soil moisture sensor(s), etc. Modify Note 17 accordingly.

----- 0 Replies -----