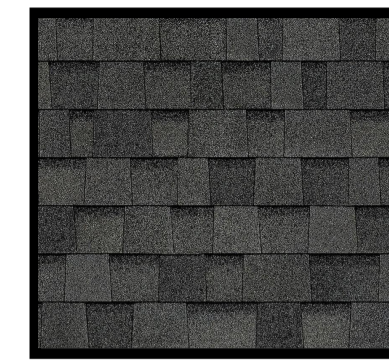
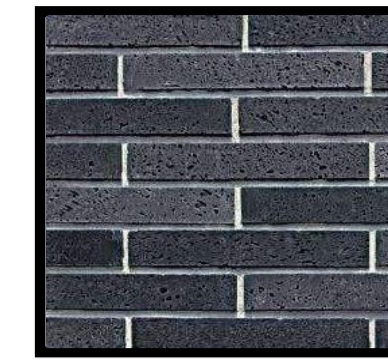


EXTERIOR MATERIAL SCHEDULE:		
KEY ITEM		COLOR
A	ADHERED THIN BRICK VENEER - ROOLAR RUNNING BOND	DARK
B	ADHERED THIN BRICK VENEER - ROOLAR SOLDIER COURSE	LIGHT GRAY
C	STONE CAP/ SILL BY THIN BRICK WR	STANDARD COLOR - TBD
D	CORRUGATED METAL SIDING W/ EXPOSED FASTENERS	TBD BY OWNER
E	LP SHARPSIDE HORIZONTAL LAP SIDING W/ CEDAR MILL TEXTURE - 1" REVEAL	ABYSS BLACK OR CAVERN GRAY
F	LP SHARPSIDE HORIZONTAL LAP SIDING W/ CEDAR MILL TEXTURE - 5" REVEAL	QUARRY GRAY
G	LP SHARPSIDE HORIZONTAL LAP SIDING W/ CEDAR MILL TEXTURE - 5" REVEAL	WHITE GRANITE BY WOODTONE
H	LP SHARPSIDE 4X8 CEDAR WOOD GRAN PANEL WITH MILL FINISH ALUMINUM H-CHANNEL TRIM	QUARRY GRAY
J	LP SHARPSIDE CORNER TRIM 1/2" TYP. 1 1/4" X ITEM "G"	BLACK
K	PRE-FINISHED METAL FASCIA/SOFFIT	BLACK
L	PRE-FAB METAL COPING FLASHING, COLOR TO MATCH ADJ. MAT.	COLOR MATCH ITEM "D"
M	ASPHALT SHINGLES	DARK GRAY
N	CONTINUOUS FILTERED RIDGE VENT	MATCH SHINGLES
P	STANDING SEAM METAL ROOF	BLACK
Q	PRE-FABRICATED ALUM. POWDER COAT SUNSHADE CANOPY BY OTHERS	COLOR MATCH ITEM "D"
R	PRE-FABRICATED ALUM. POWDER COAT COVERED CANOPY BY OTHERS	COLOR MATCH ITEM "D"
S	PRE-FABRICATED SUSPENDED ALUM. BALCONY (RODS ON OUTSIDE)	BLACK
T	ALUM. GUARD RAIL SYSTEM W/ TEMPERED GLASS 42" A.F.F. WALL MOUNTED TO PARAPET, LED STRIP LIGHT UNDER TOP RAIL.	BLACK RAIL SYSTEM - CLEAR GLAZING
U	VINYL BRIDGES	BLACK
V	VINYL WINDOWS	BLACK EXTERIOR - WHITE INTERIOR
W	ALUMINUM GARAGE DOOR W/ FULL VIEW GLAZING	BLACK FRAME - CLEAR GLAZING
X	INSULATED STEEL OVERHEAD DOOR	QUARRY GRAY
Y	PT/AC TRAC PAK LOUVER	PAINTED TO MATCH ADJ MATERIAL
Z	SCAFFOLD LOCATION - VEYBY W/ OTHER KEEP BRICK BEHIND IT)	N/A
AA	PRE-FABRICATED ALUM. POWDER COAT PERGOLA	BLACK
BB	LP SHARPSIDE HOR. TRIM BOARD W/ CEDAR MILL TEXTURE - 1" REVEAL	BLACK
CC	LP SHARPSIDE VERT. TRIM BOARD W/ CEDAR MILL TEXTURE - 5" REVEAL	BLACK
DD	RETAINING WALL	SEE CIVIL PLANS
EE	5' HIGH ALUM. POWDER COAT FENCE	BLACK

NOTE: DOWNSPOUTS PAINTED TO MATCH ADJ. HTL.



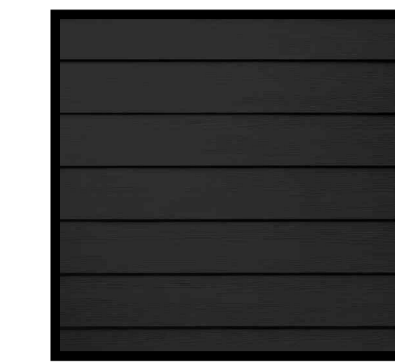
ASPHALT SHINGLES
ITEM "M"



THIN BRICK VENEER
ITEM "A"



CORRUGATED METAL SIDING
ITEM "D"



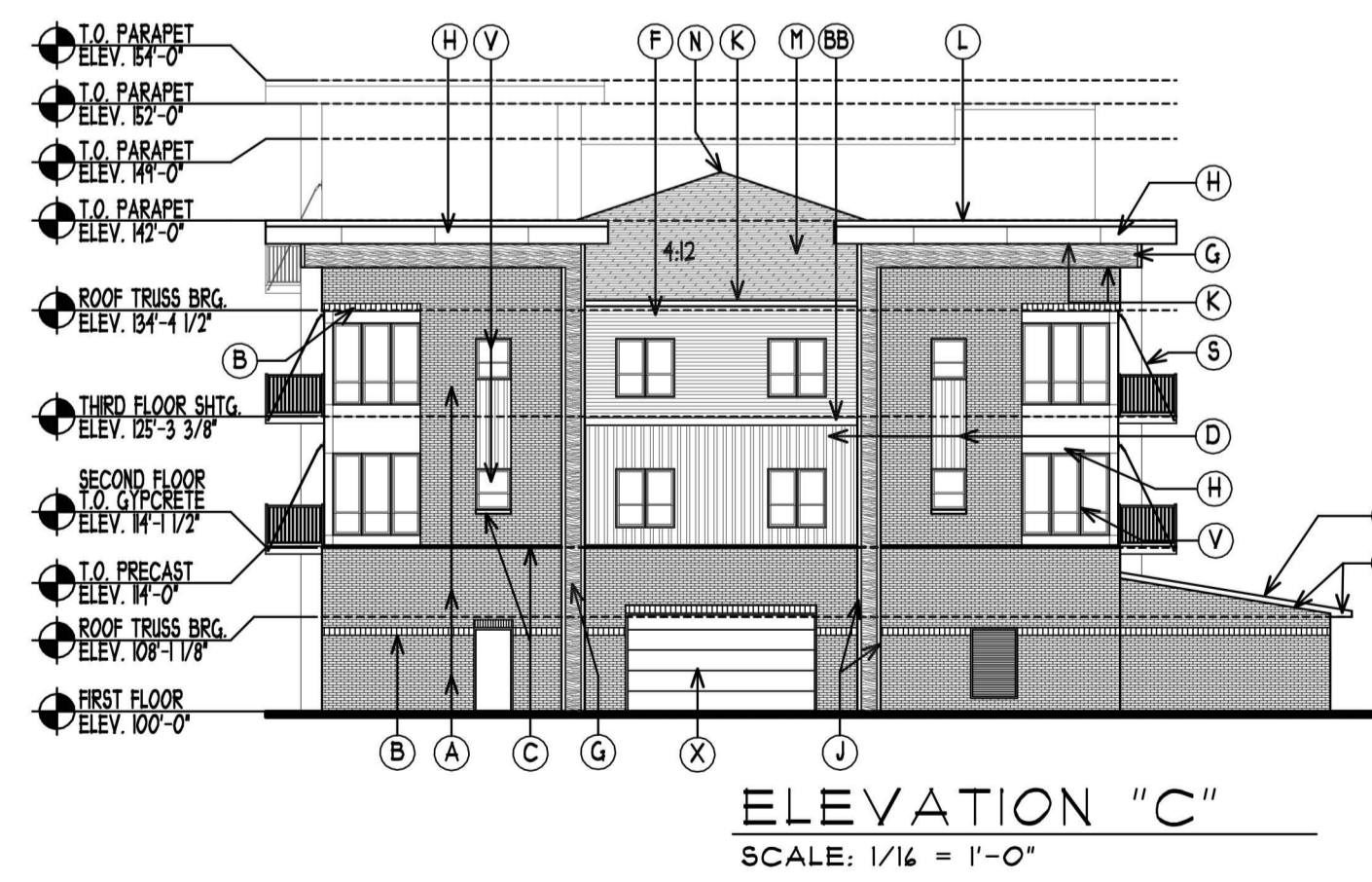
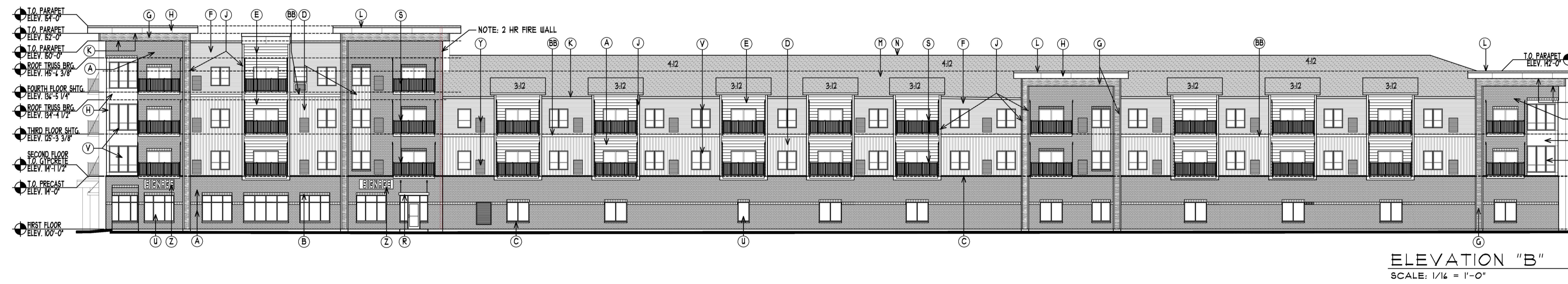
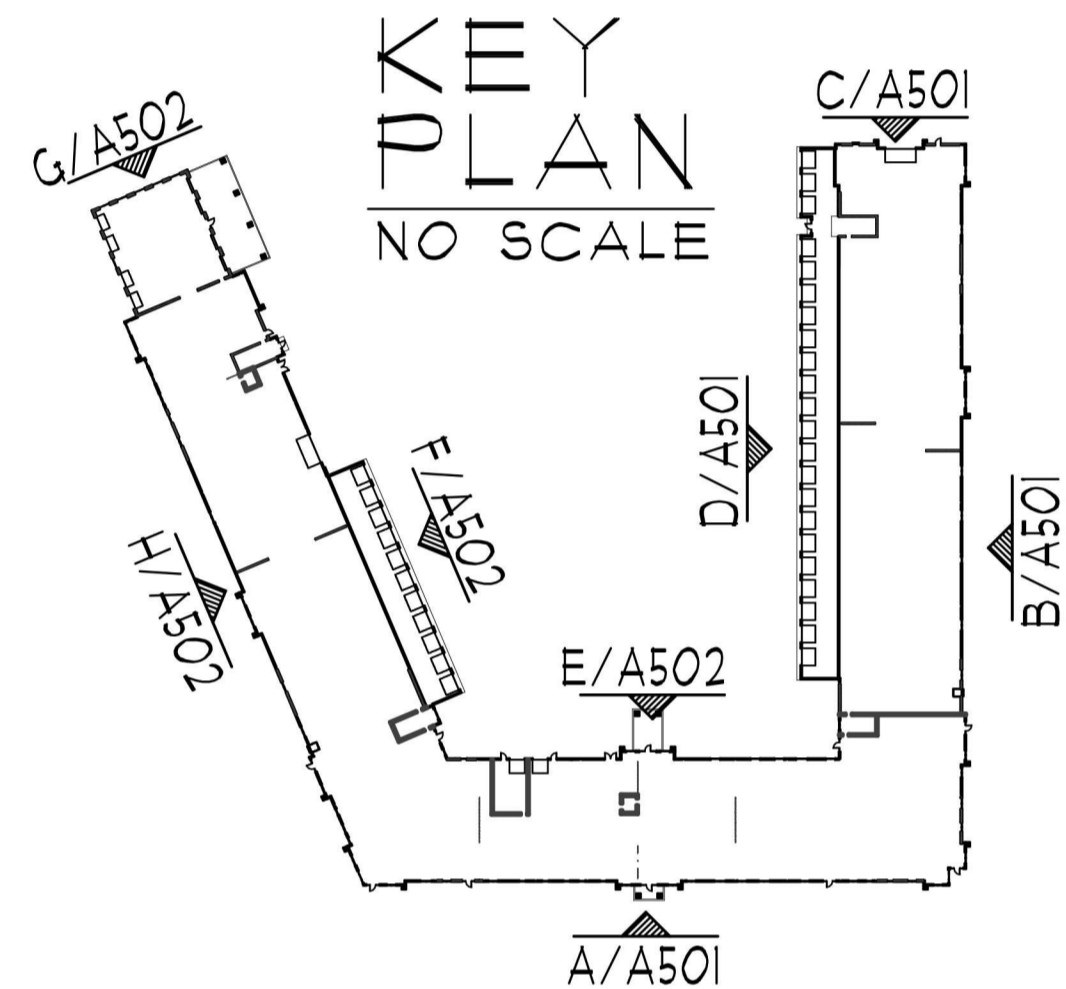
7" LAP SIDING
ITEM "E"



5" LAP SIDING
ITEM "F"



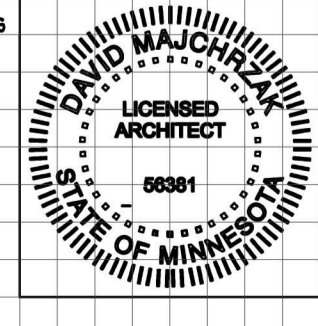
LP PANEL
ITEM "G"



COLE GROUP ARCHITECTS, LLC. reserves its copyright and other property rights in these plans. These plans are not to be reproduced, changed, or copied in any form or manner whatsoever, nor are they to be assigned to a third party without first obtaining the written permission and consent of Cole Group Architects, Inc. In the event of unauthorized reuse of these plans by a third party, the third party shall hold Cole Group Architects, Inc. harmless. COPYRIGHT 2024 Cole Group Architects, Inc.

COLE GROUP ARCHITECTS, LLC.
214 Park Avenue South, Suite 102
Saint Cloud, MN 56301
(320) 454-4510
www.colegrouparchitects.com

These documents are not valid for building permit unless signed in ink or by digital signature. Copies are not valid.
I hereby certify that this plan, specification or report was prepared by me or under my direct supervision and that I am a duly licensed Architect under the laws of the state of MINNESOTA.
Name **DAVID J. MAJCHRZAK**

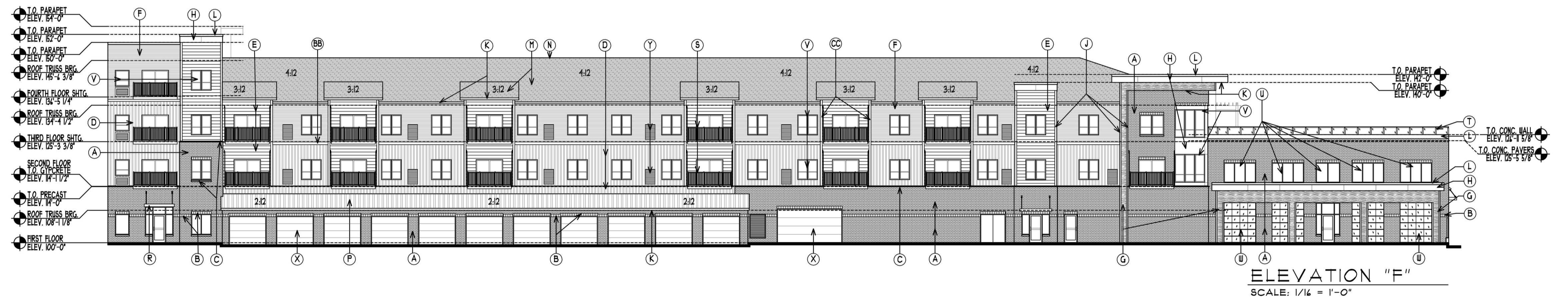
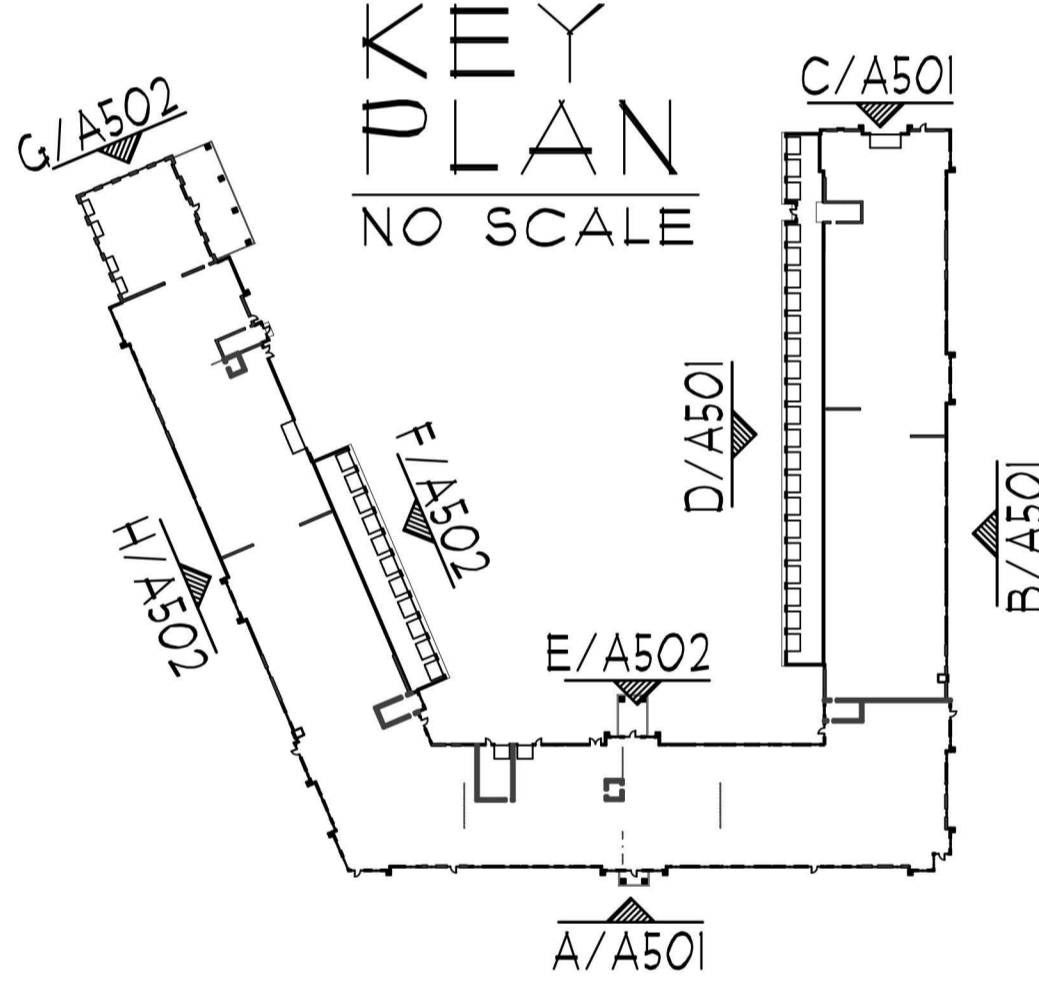
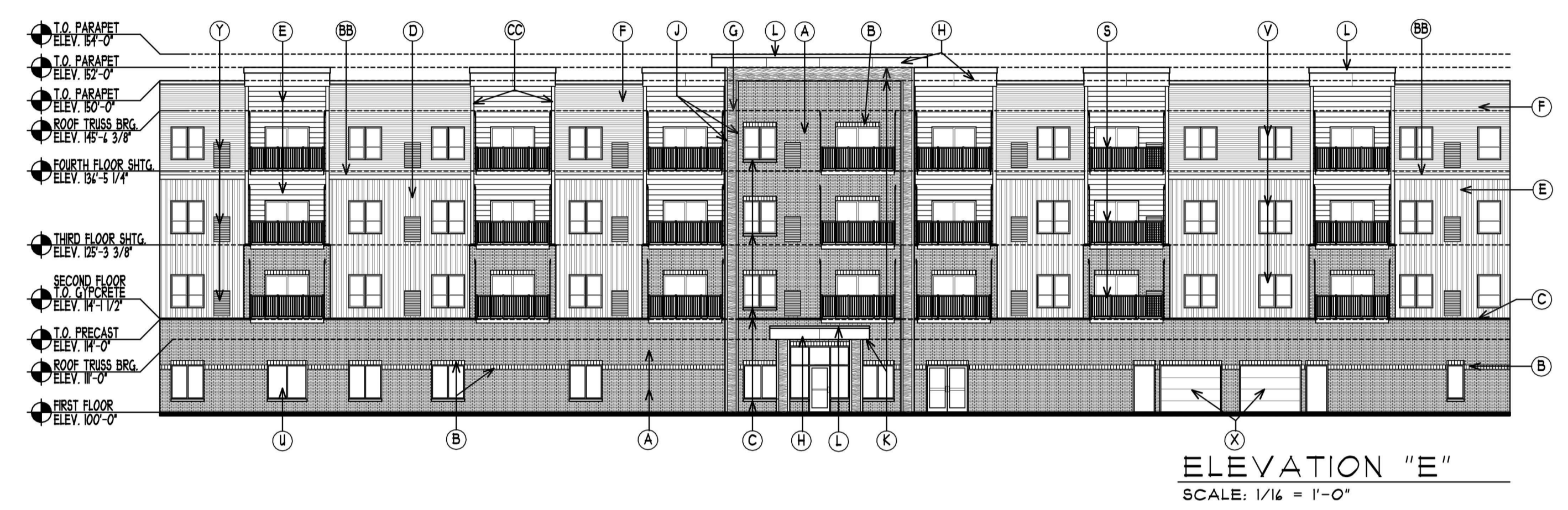
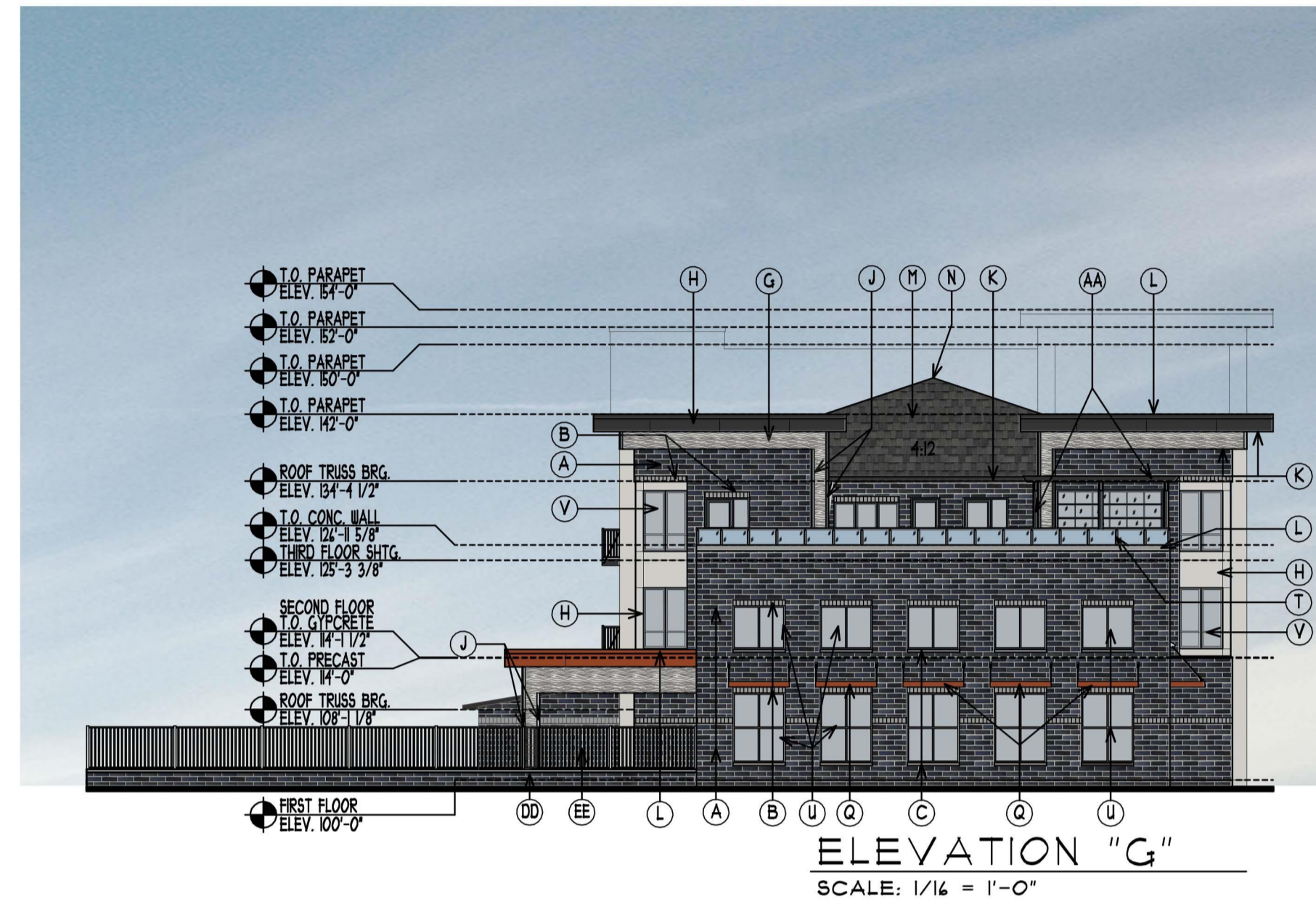
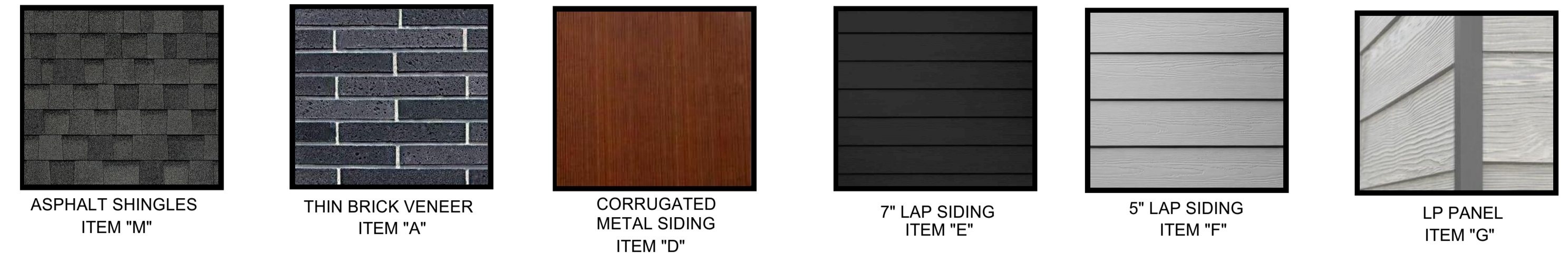


DEVELOPER:
PSD; LLC
MATT KUKER
7533 SUNWOOD DR NW
SUITE 315
RAMSEY, MN 55303
PHONE: (763) 427-5955

PROPOSED MIXED USE BLDG.:
SKYLINE ON SUNWOOD
RAMSEY, MN

REVISIONS	COMMENTS	REVISIONS	COMMENTS

Project No. **22070**
Issue Date: **May 13th, 2024**
Document Set: **SITE PLAN SUBMITTAL**
A501



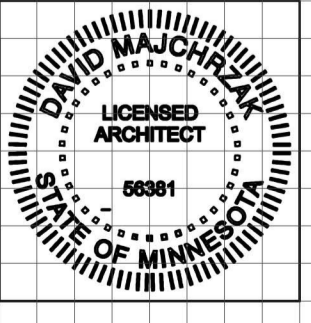
KEY ITEM	COLOR
A ADHERED THIN BRICK VENEER - MODULAR RUNNING BOND	DARK
B ADHERED THIN BRICK VENEER - MODULAR SOLDIER COURSE	LIGHT GRAY
C STONE CAP/ SILL BY THIN BRICK MFR	STANDARD COLOR - TBD
D CORRUGATED METAL SIDING W/ EXPOSED FASTENERS	TBD BY OWNER
E LP SHARTSIDE HORIZONTAL LAP SIDING W/ CEDAR MILL TEXTURE - 1" REVEAL	ABYSS BLACK OR CAVERN GRAY
F LP SHARTSIDE HORIZONTAL LAP SIDING W/ CEDAR MILL TEXTURE - 5" REVEAL	QUARRY GRAY
G LP SHARTSIDE HORIZONTAL LAP SIDING W/ CEDAR MILL TEXTURE - 5" REVEAL	WHITE GRANITE BY WOODSTONE
H LP SHARTSIDE 6X8 CEDAR WOOD GRAIN PANEL WITH MILL FINISH ALUMINUM H-CHANNEL TRIM	QUARRY GRAY
J LP SHARTSIDE CORNER TRIM 1/2" TYP. 4" x 4" ITEM "G"	BLACK
K PRE-FINISHED METAL PASCAL/SOFT	BLACK
L PRE-FAB METAL COPING FLASHING; COLOR TO MATCH ADJ. MAT.	COLOR MATCH ITEM "D"
M ASPHALT SHINGLES	DARK GRAY
N CONTINUOUS FILTERED RIDGE VENT	MATCH SHINGLES
P STANDING SEAM METAL ROOF	BLACK
Q PRE-FABRICATED ALUM. POWDER COAT SUNSHADE CANOPY BY OTHERS	COLOR MATCH ITEM "D"
R PRE-FABRICATED ALUM. POWDER COAT COVERED CANOPY BY OTHERS	COLOR MATCH ITEM "D"
S PRE-FABRICATED SUSPENDED ALUM. BALCONY ROOFS ON OUTSIDE	BLACK
T ALUM. GUARD RAIL SYSTEM W/ TEmPERED GLASS 42" A.F.F. WALL MOUNTED TO PARAPET. LED STRIP LIGHT UNDER TOP RAIL.	BLACK RAIL SYSTEM - CLEAR GLAZING
U VINYL WINDOWS	BLACK
V VINYL WINDOWS	BLACK EXTERIOR - WHITE INTERIOR
W ALUMINUM GARAGE DOOR W/ FULL VIEW GLAZING	BLACK FRAME - CLEAR GLAZING
X INSULATED STEEL OVERHEAD DOOR	QUARRY GRAY
Y PTAC/ MAGIC PAK LOUVER	PAINTED TO MATCH ADJ. MATERIAL
Z SIGNAGE LOCATION - VERIFY W/ OWNER KEEP BRICK BEHIND IT!	N/A
AA PRE-FABRICATED ALUM. POWDER COAT FRIGOLA	BLACK
BB LP SHARTSIDE HOR. TRIM BOARD W/ CEDAR MILL TEXTURE - 1" REVEAL	BLACK
CC LP SHARTSIDE VERT. TRIM BOARD W/ CEDAR MILL TEXTURE - 5" REVEAL	BLACK
DD RETAINING WALL	SEE CIVIL PLANS
EE 5' HIGH ALUM. POWDER COAT FENCE	BLACK

NOTE: DOWNSPOUTS PAINTED TO MATCH ADJ. MTL.

COLE GROUP ARCHITECTS, Inc. expressly reserves its common law copyright and other property rights in these plans. These plans are not to be reproduced, changed, or copied in any form or manner whatsoever, nor are they to be assigned to a third party without first obtaining the written permission and consent of Cole Group Architects, Inc. In the event of unauthorized reuse of these plans by a third party, the third party shall hold Cole Group Architects, Inc. harmless. COPYRIGHT 2024 Cole Group Architects, Inc.

COLE GROUP ARCHITECTS LLC.
216 Park Avenue South Suite 102
Saint Cloud, MN 56301
(320) 451-4510
www.colegrouparchitects.com

These documents are not valid for building permit unless signed in ink or by digital signature. Copies are not valid.
I hereby certify that this plan, specification or report was prepared by me or under my direct supervision and that I am a duly licensed Architect under the laws of the state of MINNESOTA.
Name: **DAVID J. MAJCHERZAK**



DEVELOPER:
PSD; LLC
MATT KUKER
7533 SUNWOOD DR NW
SUITE 315
RAMSEY, MN 55303
PHONE: (763) 427-5955

PROPOSED MIXED USE BLDG.:
SKYLINE ON SUNWOOD
RAMSEY, MN

REVISIONS COMMENTS	REVISIONS COMMENTS	Project No.	Document Set:
		22070	SITE PLAN SUBMITTAL
		Issue Date:	
		May 13th, 2024	
			A502