



Option A - \$100,000

Option B - \$ 170,000

KOMPAN
Let's play



 Sliding

 Climbing



 Rocking



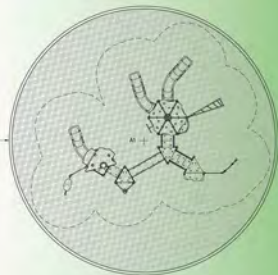
 Training

 Balancing



 Activity Hyperlinks

**Alpine Park
Option 1**



2-12
AGE RANGE

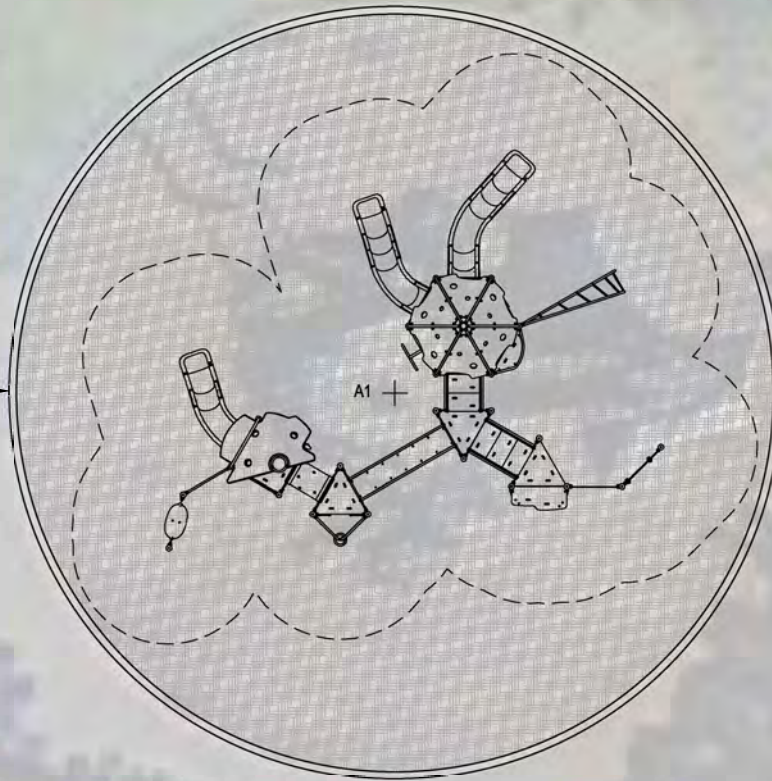
36
USERS

15
PLAY ACTIVITIES



Option A

Ø49'-7 3/4"
[Ø1513cm]

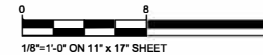


TOTAL EWF SURFACING AREA: 1860 SF

6" CONCRETE BORDERS
PERIMETER: 156 LF

#	Product Number	Product Name	M.F.H.	Count
A	PCE410132-xx02	Denali with Roof	73"	1

ALPINE PARK
CITY OF RAMSEY
6600 Alpine Drive NW
Anoka, MN
Site Plan - Option 1



MANUFACTURER'S SHOP DRAWING:

FOR USE BY CONTRACTOR, ENGINEER, OR DESIGN PROFESSIONAL OF RECORD. SEE BIDDING SALES PROPOSAL FOR COMPLETE SCOPE TO BE PROVIDED BY KOMPAN OR REPRESENTATIVE AGENCY. CONFIRM FINAL PLAN AND SCOPE WITH KOMPAN SALES REPRESENTATIVE PRIOR TO USE FOR REVIEW, PERMITTING, OR CONSTRUCTION.

TO BE READ CONTINGENTLY WITH KOMPAN'S STANDARDS FOR SITE PREPARATION, MATERIALS AND INSTALLATION PROCESSES PROVIDED AFTER EQUIPMENT PURCHASE. A COMPLIANT PLAYGROUND TO KOMPAN'S STANDARDS MUST SATISFY ALL REQUIREMENTS IN THE CODE OF CONDUCT.

SLAB BY OTHERS UNLESS OTHERWISE NOTED: FOR SURFACE MOUNT OPTIONS, THE CONCRETE REQUIREMENTS MAY BE UP TO 20% OF 3,000 PSI MINIMUM COMPRESSIVE STRENGTH. CONTACT KOMPAN FOR SPECIFIC PRODUCT REQUIREMENTS. ALL COMPOSITE STRUCTURES SHOWN REQUIRE A SITE GRADE OF 2% MAXIMUM 1% OPTIMAL. SPECIFICATIONS FOR EACH KOMPAN STRUCTURE MAY BE FOUND AT WWW.KOMPAN.COM/COMPANMASTER

DIMENSIONS OF PI AREA, SIZE AND ORIENTATION, LOCATIONS OF ALL EXISTING UTILITIES, EQUIPMENT AND SITE FURNISHINGS TO BE FIELD VERIFIED PRIOR TO CONSTRUCTION.

PREPARED AND PRINTED IN USA BY KOMPAN © 2023 KOMPAN, INC. AUSTIN, TX, USA 800-426-8188

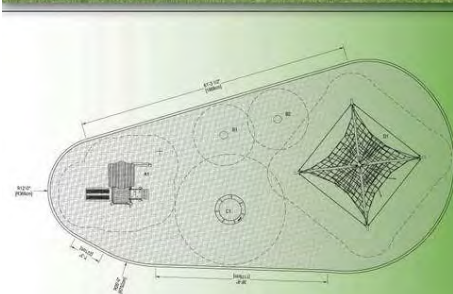


SALES REPRESENTATIVE			SHEET	
John Engler			K1.0	
REVIEW BY DESIGN	DRAWN BY SurSub	DATE 01/02/2024		
REV. NO.	REV. BY	REV. DATE	REVISION NOTES	
-	-	-	-	

LAYOUT IS IN ACCORDANCE WITH ASTM F1487

Option A

KOMPAN
Let's play



Alpine Park Option 2

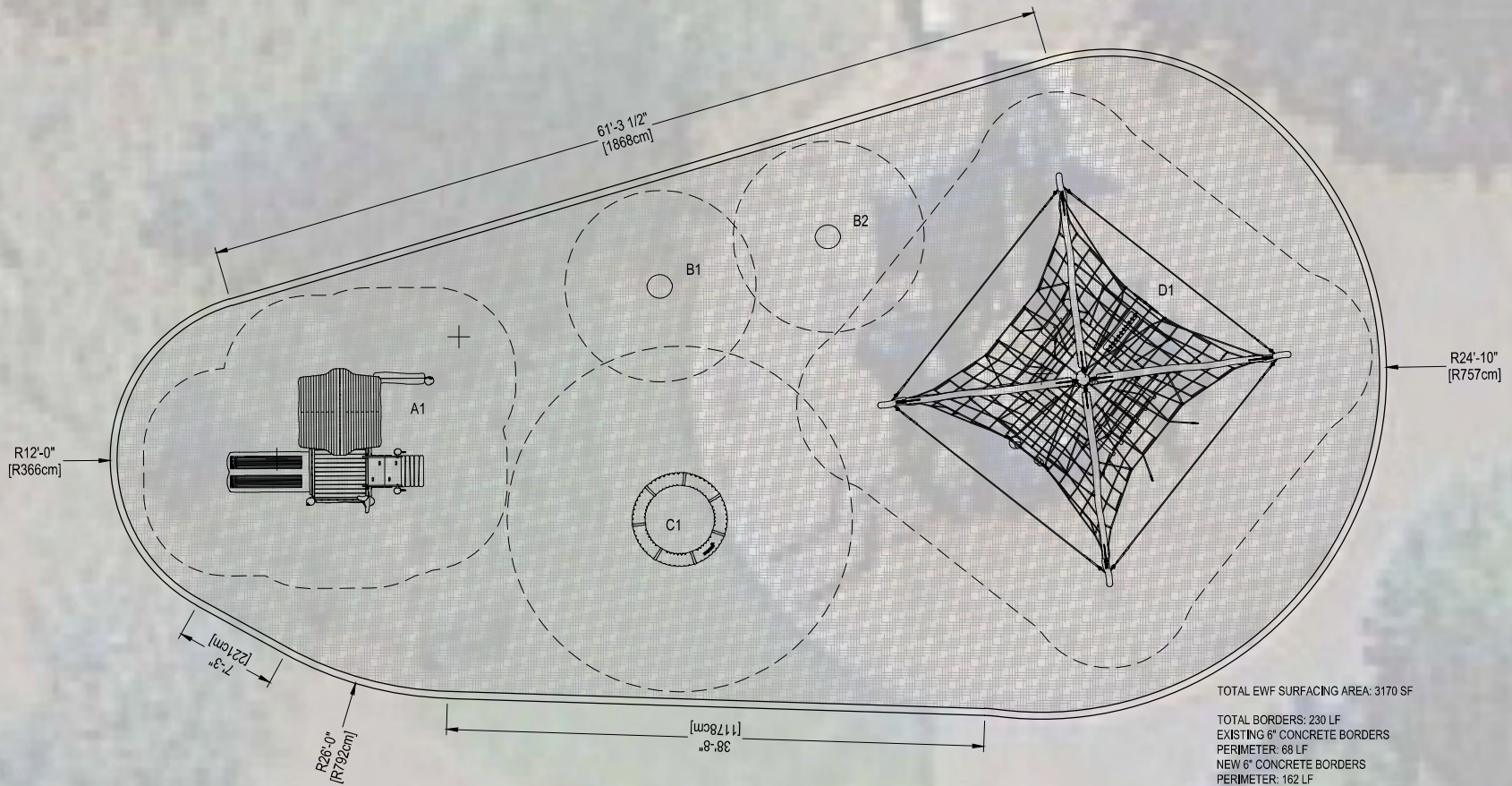
2-12
AGE
RANGE

71
USERS

7
PLAY
ACTIVITIES



Option B



TOTAL EWF SURFACING AREA: 3170 SF

TOTAL BORDERS: 230 LF
 EXISTING 6" CONCRETE BORDERS
 PERIMETER: 68 LF
 NEW 6" CONCRETE BORDERS
 PERIMETER: 162 LF

#	Product Number	Product Name	M.F.H.	Count
A	NRC409-xx21	The Wizard's Hideaway	211'	1
B	ELE40034-xx17SC	Spinner Bowl	112'	2
C	GXY980014-xx17	Supernova	24'	1
D	NRC836-xx01	Jungle Dome	7'10"	1

ALPINE PARK
CITY OF RAMSEY
 6600 Alpine Drive NW
 Anoka, MN
 Site Plan - Option 2



MANUFACTURER'S SHOP DRAWING:

FOR USE BY CONTRACTOR, ENGINEER, OR DESIGN PROFESSIONAL OF RECORD. SEE BIDDING SALES PROPOSAL FOR COMPLETE SCOPE TO BE PROVIDED BY CONTRACTOR/PROFESSIONAL AGENCY. CONSULT FINAL PLAN AND SCOPE WITH KOMPAN SALES REP OR PROJECT MANAGER PRIOR TO USE FOR PERMITS, CONSTRUCTION, OR INSTALLATION. THIS DRAWING IS TO BE READ CONJUNCTIVELY WITH KOMPAN STANDARDS FOR SITE PREPARATION, MATERIALS AND INSTALLATION PROCESSES PROVIDED TO USER BY EMAIL PURCHASE, A COMPLIANT PLAYGROUND CONFORMANCE STANDARDS USER SAFETY ALL REQUIREMENTS IN THE CODES OF CONDUCT.

SLAB BY OTHERS UNLESS OTHERWISE NOTED FOR SURFACE MOUNT OPTIONS. THE CONCRETE REQUIREMENTS MAY BE UP TO 4" OF SLAB FOR MINIMUM COMPRESSIVE STRENGTH. CONTACT KOMPAN FOR SPECIFIC PRODUCT REQUIREMENTS. ALL CONCRETE STRUCTURES SHOWN REQUIRE A SITE GRADE OF 2% MAXIMUM 1% OPTIMAL SPECIFICATIONS FOR EACH COMPONENT STRUCTURE MAY BE FOUND AT WWW.KOMPAN.COM OR MANAGER.

DIMENSIONS OF PLAY AREA, SITE AND ORIENTATION, LOCATIONS OF ALL EXISTING UTILITIES, EQUIPMENT AND SITE FURNISHINGS TO BE FIELD VERIFIED PRIOR TO CONSTRUCTION.

PREPARED AND PRINTED IN USA BY KOMPAN © 2023 KOMPAN, INC., AUSTIN, TX, USA 800-626-5478



SALES REPRESENTATIVE		SHEET	
John Engler		K1.0	
REVIEW BY	DRAWN BY	DATE	
DESIGN	SusSub	01/02/2024	
REV. NO.	REV. BY	REV. DATE	REVISION NOTES
-	-	-	-

LAYOUT B IN ACCORDANCE WITH ASTM F4147

Option B



Option A - \$100,000

Option B - \$150,000



COLOR KEY	
	TAN
	BLUE
	AQUA
	GREEN
	TAN/GREEN



Option A

3D Designer: Kendra

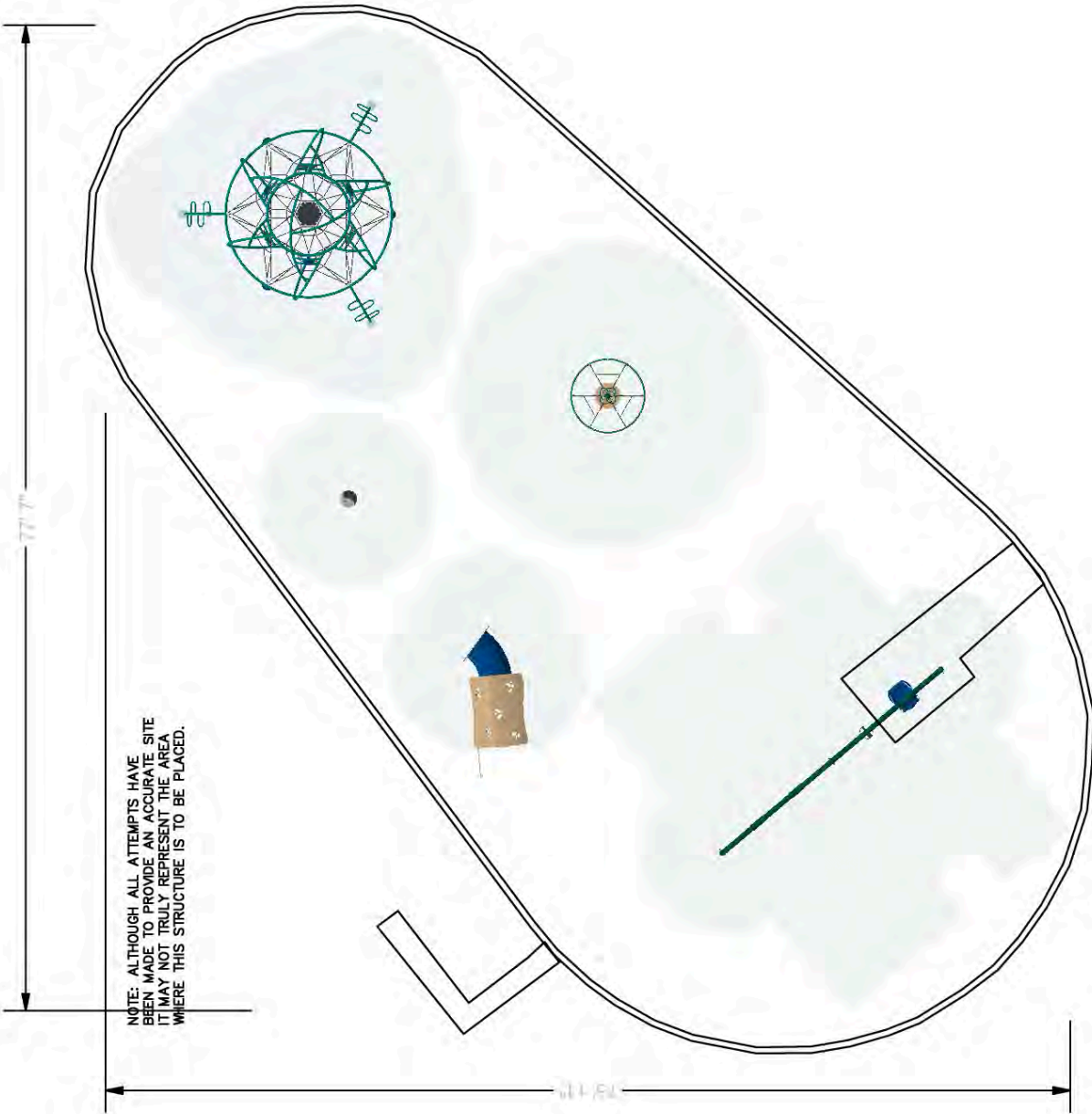


3D Designer: Kendra



Option A

Option A



The use and layout of play components identified in this plan conform to the CPSC guidelines. U.S. CPSC recommends the separation of age groups in playground layouts.

PLAYGROUND ACCESSIBILITY (Provided/Required)			
TOTAL ELEVATED EVENTS	TRANSFER ACCESSIBLE EVENTS	RAMP ACCESSIBLE EVENTS	TYPES OF GROUND EVENTS
9	4 / 2	0 / 0	7 / 1
			4 / 1

OVERALL BOUNDING OF USE ZONES
 Area: 5887.8 sq.ft.
 Perimeter: 306.9 ft.
 STRUCTURE SIZE: 11'x77' 7"
 POST SIZE(S):

**The space requirements shown here are to ASTM standards. Requirements for other standards may be different.

Warning: Accessible safety surfacing material is required beneath and around this equipment that is compliant with ASTM, CPSC, and ADAAG requirements.

SERIES Burke Basics

SITE PLAN VIEW

GROUP:
BB-2765|Free Standing

Alpine Park
Ramsey, MN 55303

01/04/2024

DESIGNED FOR AGES:
5 to 12



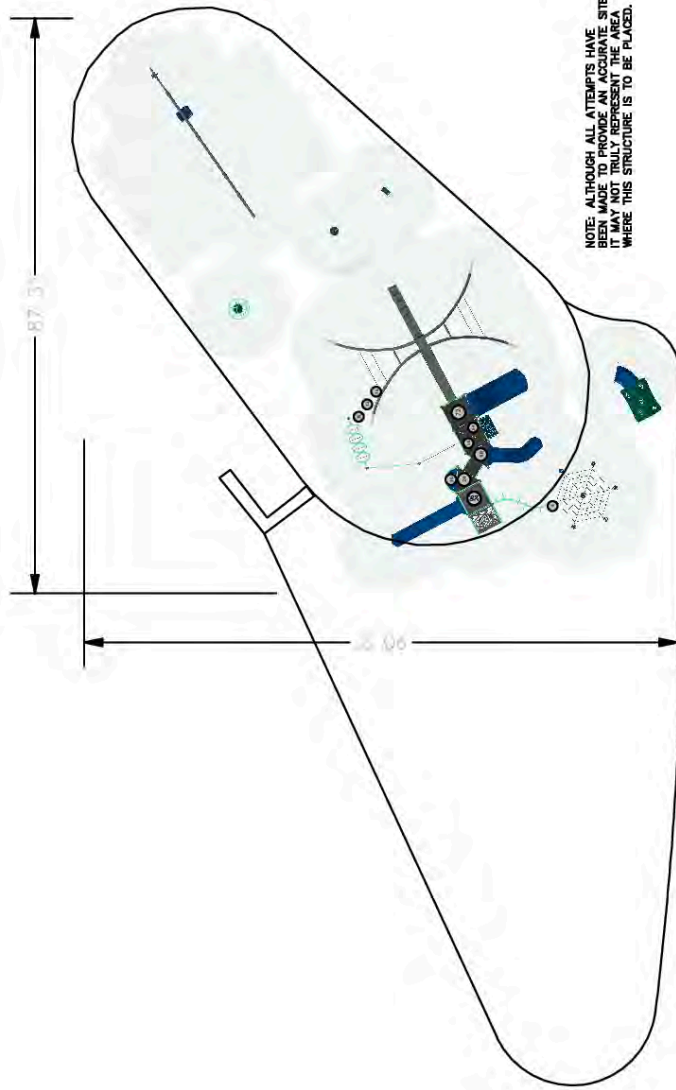
St. Croix Recreation Fun Playgrounds
100-178955-1

Designer: Leah Kirssin





Option B



The use and layout of play components identified in this plan conform to the CPSC guidelines. U.S. CPSC recommends the separation of age groups in playground layouts.

TOTAL EVENTS	PLAYGROUND ACCESSIBILITY (Provided/Required)			TYPES OF GROUND EVENTS
	ELEVATED EVENTS	TRANSFER ACCESSIBLE EVENTS	RAMP ACCESSIBLE EVENTS	
28	10 / 5	10 / 0	0 / 0	20 / 3
				8 / 3

**The space requirements shown here are to ASTM standards. Requirements for other standards may be different.

OVERALL BOUNDING OF USE ZONES
 Area: 7855.2 sq. ft.
 Perimeter: 354.6 ft.
STRUCTURE SIZE: 90' 2" x 87' 3"
POST SIZE(S): 5"

Warning: Accessible safety surfacing material is required beneath and around this equipment that is compliant with ASTM, CPSC, and ADAAG requirements.

SERIES LINE: Nucleus | Intensity | Burke Basics

SITE PLAN VIEW

GROUP:
Structure | Free Standing

Ramsey Alpine Park Option 2

01/05/2024

Ramsey, MN 55303

St. Croix Recreation Fun Playgrounds

DESIGNED FOR AGES:
5 to 12

Burke
PLAY THAT MOVES YOU.

100-178990-1

Designer: Leah Kirssin

MIDWEST PLAYSCAPES

Option A - \$100,000

Option B - \$170,000

Option A



Alpine Park
Scope A

MW010524-1

Sales Representative

**MIDWEST
PLAYSCAPES**

8632 EAGLE CREEK CIRCLE
SAVAGE, MN 55378

PHONE: 1.800.747.1452
EMAIL: playscapes@earthlink.net

Equipment Manufacturer

PLAYWORLD
The world needs play.

POST & COMPONENT

Dark Brown
Beige
Azure

ROTOMOLD PLASTIC

Sky
Brownstone

2-COLOR PLASTIC

Forest Green-Sand

ECO-ARMOR

Brown



Alpine Park
Scope A
MW010524-1

Sales Representative
MIDWEST
PLAYSCAPES
8632 EAGLE CREEK CIRCLE
SAVAGE, MN 55378
PHONE: 1.800.747.1452
EMAIL: playscapes@earthlink.net

Equipment Manufacturer
PLAYWORLD
The world needs play.



Alpine Park

Scope A

MW010524-1

Sales Representative



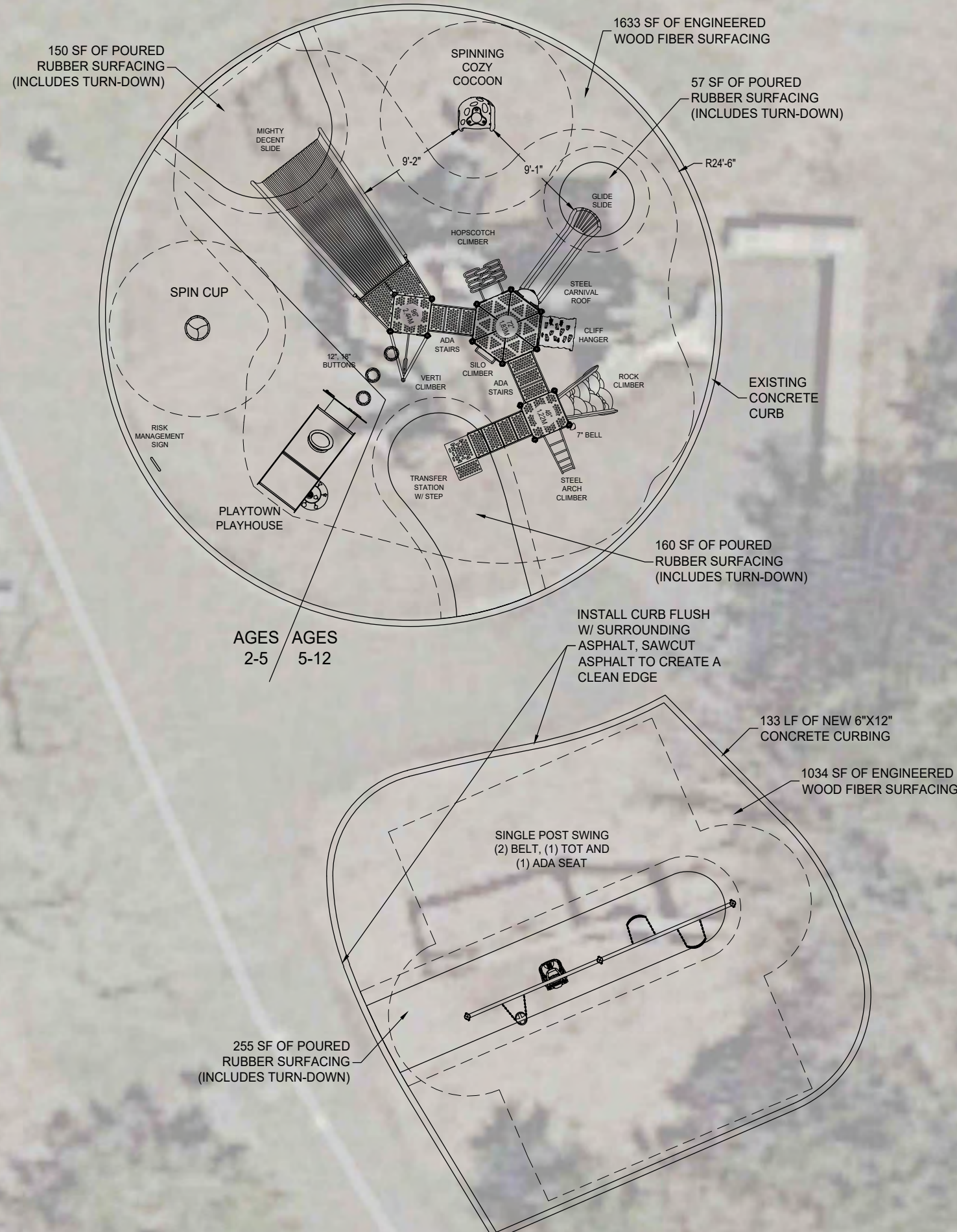
**MIDWEST
PLAYSCAPES**
8632 EAGLE CREEK CIRCLE
SAVAGE, MN 55378
PHONE: 1.800.747.1452
EMAIL: playscapes@earthlink.net

Equipment Manufacturer



The world needs play.

Option A



8632 EAGLE CREEK CIRCLE
SAVAGE, MN 55378

PHONE: 1.800.747.1452
EMAIL: playscapes@earthlink.net

EQUIPMENT SIZE:

USE ZONE:

AREA: see plan
PERIMETER:

FALL HEIGHT:
8 Ft.

USER CAPACITY: 71
AGE GROUP: 2-12

✓ ASTM F1487-17
✓ CPSC #325



PROJECT NO:
MW010524-1

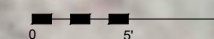
SCALE:
1" = 10'-0"

DRAWN BY:
TKA

Paper Size

DATE:
1-5-24

B



*PLAYGROUND SUPERVISION REQUIRED

Alpine Park - Scope A

City of Ramsey, MN



Alpine Park
 Scope B
 MW010524-2

Sales Representative
MIDWEST PLAYSCAPES
 8632 EAGLE CREEK CIRCLE
 SAVAGE, MN 55378
 PHONE: 1.800.747.1452
 EMAIL: playscapes@earthlink.net

Equipment Manufacturer
PLAYWORLD
 The world needs play.

POST & COMPONENT	ROTOMOLD PLASTIC	2-COLOR PLASTIC	ECO-ARMOR
Dark Brown	Sky	Forest Green-Sand	Brown
Beige	Brownstone		
Azure			



Alpine Park
Scope B
MW010524-2

Sales Representative



**MIDWEST
PLAYSCAPES**

8632 EAGLE CREEK CIRCLE
SAVAGE, MN 55378

PHONE: 1.800.747.1452
EMAIL: playscapes@earthlink.net

Equipment Manufacturer



The world needs play.

Option B



Alpine Park
Scope B

MW010524-2

Sales Representative

MIDWEST
PLAYSCAPES

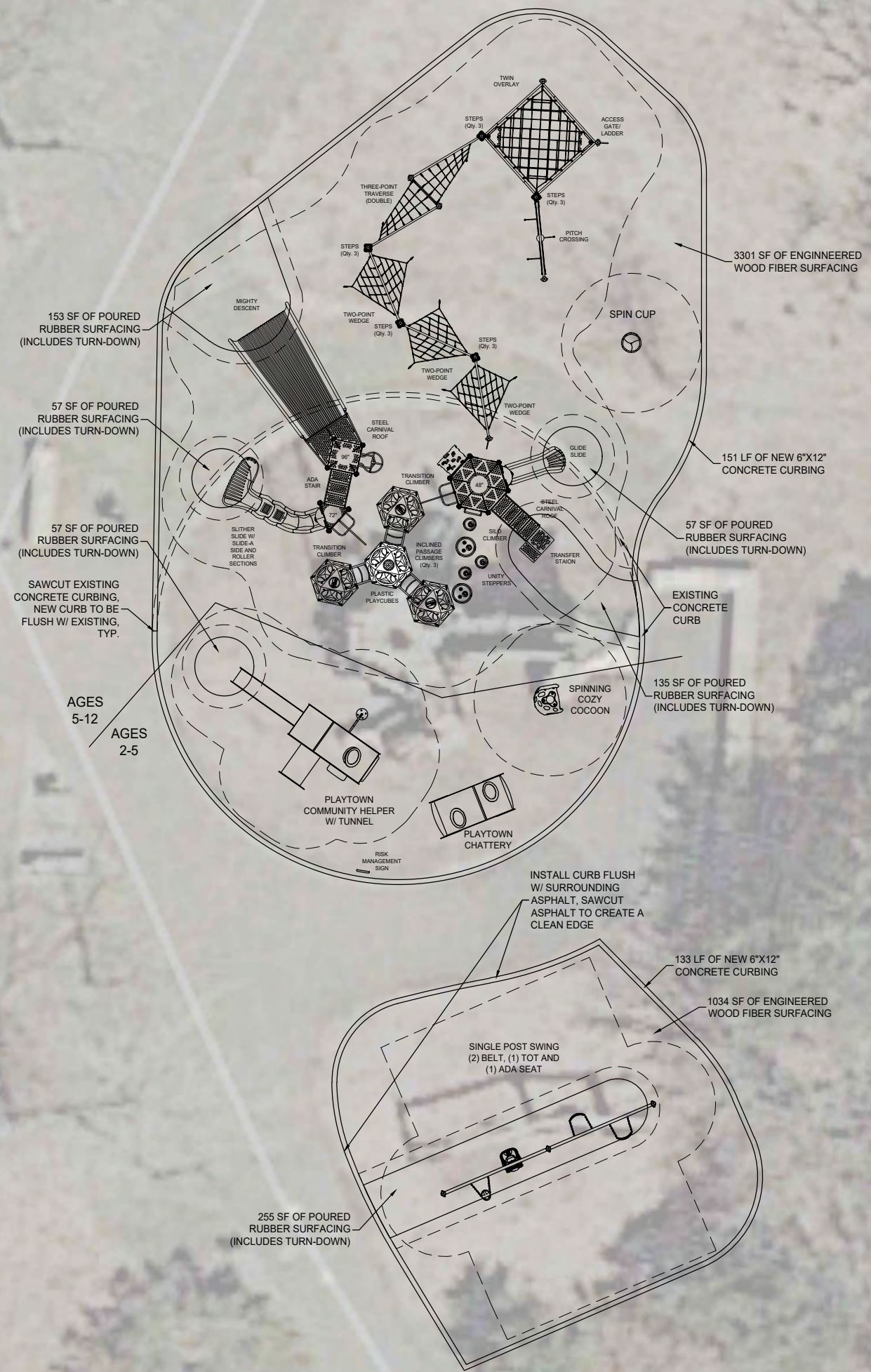
8632 EAGLE CREEK CIRCLE
SAVAGE, MN 55378

PHONE: 1.800.747.1452
EMAIL: playscapes@earthlink.net

Equipment Manufacturer

PLAYWORLD
The world needs play.

Option B



8632 EAGLE CREEK CIRCLE
SAVAGE, MN 55378
PHONE: 1.800.747.1452
EMAIL: playscapes@earthlink.net

EQUIPMENT SIZE:

USE ZONE:

AREA: see plan
PERIMETER:

FALL HEIGHT:
8 Ft.

USER CAPACITY: 148
AGE GROUP: 2-12

✓ ASTM F1487-17
✓ CPSC #325



PROJECT NO:
MW010524-2

SCALE:
NTS

DRAWN BY:
TKA

Paper Size

DATE:
1-5-24

B

Alpine Park - Scope B

City of Ramsey, MN

*PLAYGROUND SUPERVISION REQUIRED

