



# THE WATERFRONT

CITY OF RAMSEY

RAMSEY, MN 55303

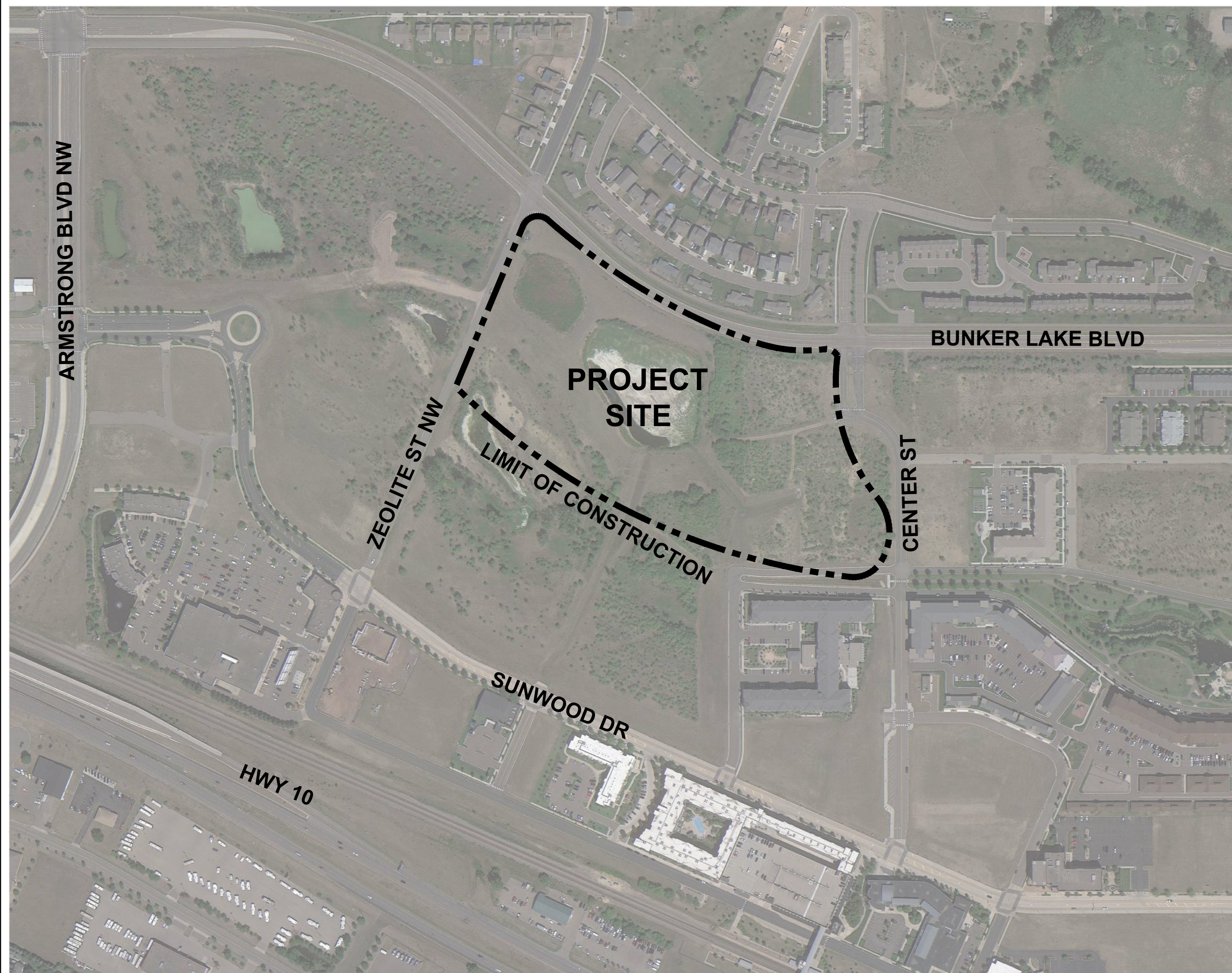
**DF/**  
DAMON FARBER  
LANDSCAPE ARCHITECTS

310 South 4th Avenue, Suite 7050  
Minneapolis, MN 55415  
p: 612.332.7522

## TREE PLANTING PLAN

PROJECT # 23-176

CONTEXT MAP



PROJECT DIRECTORY

**OWNER**

CITY OF RAMSEY  
MARK RIVERBLOOD | PARKS & ASSISTANT PUBLIC WORKS DIRECTOR  
7550 SUNWOOD DRIVE NW  
RAMSEY, MINNESOTA 55303  
MRIVERBLOOD@CITYOFRAMSEY.COM  
P. 763.433.9853

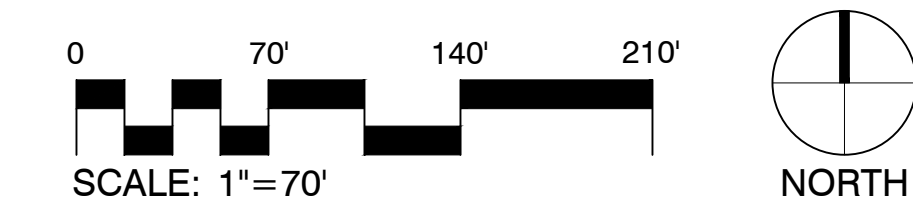
**LANDSCAPE ARCHITECT**

DAMON FARBER LANDSCAPE ARCHITECTS  
310 S 4TH AVE  
MINNEAPOLIS, MN 55415  
CONTACT: CHUCK EVENS, PLA  
CEVENS@DAMONFARBER.COM  
651.216.6115  
ABBY GLASTETTER, PLA  
AGLASTER@DAMONFARBER.COM  
314.413.7180

Sheet List Table	
Sheet Number	Sheet Title
G000	COVER SHEET
G001	EXISTING CONDITIONS
G003	NOTES, ABBREVIATIONS & SYMBOLS
L100	TREE PLANTING PLAN
L500	SITE DETAILS



01 SITE ORIENTATION PLAN  
1" = 50'-0"



100% CONSTRUCTION SET FOR CONTRACTOR QUOTES

TREE PLANTING PLAN

THE WATERFRONT

RAMSEY, MINNESOTA

I hereby certify that this document was prepared by me or under my direct supervision and that I am a duly licensed Landscape Architect under the laws of the State of Minnesota.

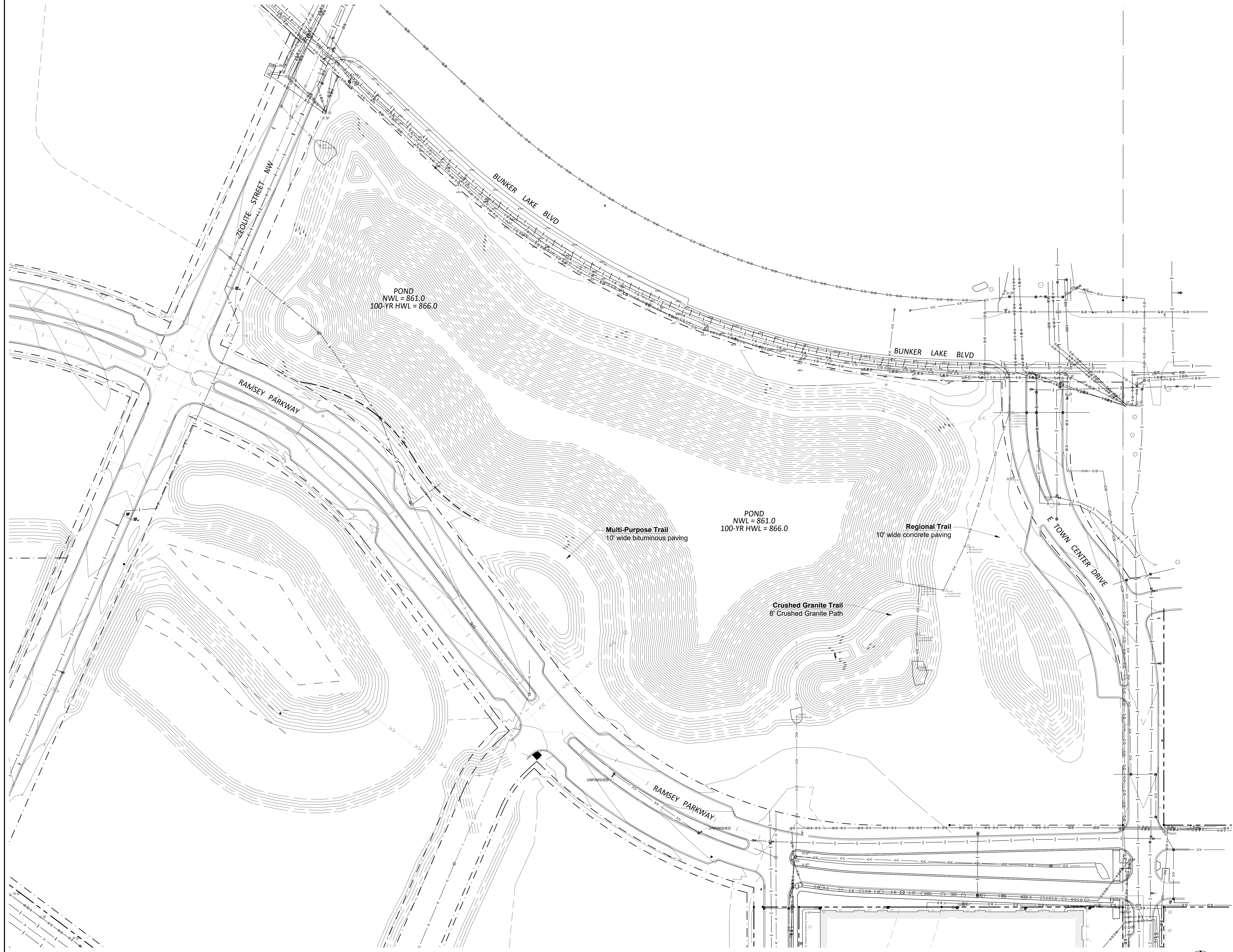
Name Charles Evens  
Registration# 50575  
Signature *Charles Evens* 03/08/2024  
Date

Date 03/08/2024  
DF/ Project # 23-176  
Scale AS SHOWN  
Drawn/Checked AG/CE

REVISION	

COVER SHEET

G000



100% CONSTRUCTION  
SET FOR CONTRACTOR  
QUOTES

TREE PLANTING PLAN

## THE WATERFRONT

RAMSEY, MINNESOTA

I hereby certify that this document was prepared by me or under my direct supervision and that I am a duly licensed Landscape Architect under the laws of the State of Minnesota.

Name Charles Evens  
Registration# 50575  
*Charles Evens*  
Signature 03/08/2024  
Date

Date 03/08/2024  
DF/ Project # 23-176  
Scale AS SHOWN  
Drawn/Checked AG/CE

REVISION

EXISTING  
CONDITIONS

# G001

# GENERAL PROJECT NOTES

## CONTRACT DOCUMENTS

- THE WORK SHALL CONFORM TO THE CONTRACT DOCUMENTS.
- THE CONTRACT DOCUMENTS ARE COMPLEMENTARY. READ THE DRAWINGS IN CONJUNCTION WITH THE SPECIFICATIONS AND EXECUTE THE WORK.
- THE WORK IS DEPENDENT ON SEVERAL DISCIPLINES. READ THE DRAWINGS BY CROSS-REFERENCING BETWEEN DISCIPLINES.
- REPORT DISCREPANCIES IMMEDIATELY TO THE OWNER'S REPRESENTATIVE FOR DIRECTION BEFORE PROCEEDING WITH THE WORK.

## SITE ACCESS & PROTECTION

- STAGING AREA IS WITHIN THE CONTRACT LIMIT (OR "PROJECT LIMITS") LINE. STAGING AREA DOES NOT INCLUDE ACCESS ROUTES TO THE SITE. THE CONSTRUCTION (AND REMOVAL) OF TEMPORARY STAGING AREAS AND/OR ACCESS ROUTES SHALL BE THE CONTRACTOR'S SOLE RESPONSIBILITY AND EXPENSE.
- CONSTRUCTION RELATED VEHICLES REQUIRED FOR THE WORK EXITING AND/OR ENTERING THE SITE SHALL NOT DEPOSIT DIRT, MUD, OR OTHER DELETERIOUS MATERIALS THAT WOULD PRESENT A NUISANCE OR HAZARD TO THE PUBLIC TRAVELING ON RIGHT OF WAYS. PREVENTION AND CLEANING SHALL BE THE CONTRACTOR'S SOLE RESPONSIBILITY AND EXPENSE.
- NO WORK, EQUIPMENT OR STAGING IS PERMITTED OUTSIDE THE LIMIT LINES UNLESS THE CONTRACTOR HAS APPROVAL FROM AUTHORITIES. COORDINATION PERMITS AND TRAFFIC CONTROL REQUIRED SHALL BE THE CONTRACTOR'S SOLE RESPONSIBILITY AND EXPENSE.
- THE DOCUMENTS DO NOT SPECIFY SAFETY MATERIALS, EQUIPMENT, METHODS OR SEQUENCING TO PROTECT PERSONS AND PROPERTY. IT SHALL BE THE CONTRACTOR'S SOLE RESPONSIBILITY AND EXPENSE TO DIRECT AND IMPLEMENT SAFETY OPERATIONS TO PROTECT PERSONS AND PROPERTY.

## QUALITY ASSURANCE

- EXECUTE THE WORK AND SCHEDULE INSPECTIONS IN ACCORDANCE WITH APPLICABLE FEDERAL, STATE, AND LOCAL STANDARDS, LAWS AND REGULATIONS.
- ENSURE SUBCONTRACTORS, MANUFACTURERS AND SUPPLIERS HAVE THE LATEST CONTRACT DOCUMENTS PRIOR TO THE SUBMITTAL OF THEIR SHOP DRAWINGS AND/OR DELEGATED DESIGN DRAWINGS.
- REFER TO THE SPECIFICATIONS FOR REQUIRED SUBMITTALS, INSPECTIONS AND NOTICE TO PROCEED.

## EXISTING CONDITIONS SURVEY

- THE DOCUMENTS ARE BASED ON THE FOLLOWING TOPOGRAPHIC AND UTILITY SURVEY:
  - SURVEYED UNDERGROUND UTILITIES ARE PROVIDED FOR INFORMATION ONLY AS THEY ARE INFERRED BY SURFACE MARKINGS AND FEATURES AND AS SUCH MAY NOT BE ACCURATE OR COMPLETE.

## GEOTECHNICAL REPORT

- THE GEOTECHNICAL REPORTS ARE MADE AVAILABLE FOR INFORMATION ONLY AS SOME RECOMMENDATIONS IN THE REPORT MAY NOT BE RELEVANT OR USED IN THE DOCUMENTS.

## UTILITIES

- THE LOCATIONS AND SIZES OF EXISTING UTILITIES (IF SHOWN) ARE APPROXIMATE ONLY. IDENTIFY, LOCATE AND PROTECT UNDERGROUND AND OVERHEAD UTILITIES TO REMAIN.
- COORDINATE WITH THE LOCAL UTILITY COMPANIES AND/OR AGENCIES. CALL LOCAL '811' OR REQUEST LOCATES ONLINE NO LESS THAN 48 HOURS PRIOR TO DIGGING TO LOCATE UNDERGROUND UTILITIES OR AS REQUIRED BY LOCAL REGULATIONS.
- BE FULLY RESPONSIBLE FOR THE COST OF DAMAGES WHICH OCCUR AS A RESULT OF A FAILURE TO ACCURATELY LOCATE AND/OR RETAIN UTILITIES TO REMAIN.

## LAYOUT

- THE VERTICAL CONTROL FOR THE PROJECT IS: NORTH AMERICAN VERTICAL DATUM (NAV88) OR NATIONAL GEODETIC DATUM (NGDV29) UNLESS OTHERWISE NOTED.
- VERIFY THE LOCATION OF EXISTING FEATURES TO REMAIN THAT CONNECT TO NEW WORK. DIMENSIONAL CLEARANCES, SETBACKS AND OFFSETS AND VERTICAL DATUM. REPORT DISCREPANCIES IMMEDIATELY TO THE OWNER'S REPRESENTATIVE FOR DIRECTION BEFORE PROCEEDING WITH THAT PORTION OF THE WORK.
- VERIFY PREVIOUS UNDERLYING TRADEWORK CONFORMS TO THE DOCUMENTS PRIOR TO PROCEEDING WITH OVERLYING TRADEWORK. REPORT DISCREPANCIES IMMEDIATELY TO THE OWNER'S REPRESENTATIVE FOR DIRECTION BEFORE PROCEEDING WITH THAT PORTION OF THE WORK.
- GENERAL CONTRACTOR SHALL RETAIN SURVEY CONTROL FOR LAYOUT OF THE WORKS AND AS-BUILT SURVEYS.
- COORDINATE AND COLLATE SUBCONTRACTOR'S SURVEYS. IT IS THE CONTRACTOR'S RESPONSIBILITY TO FIELD VERIFY EXISTING SITE CONDITIONS AND EVOLVING SITE CONDITIONS PRIOR TO THE START OF SITE WORK. DISCREPANCY AND/OR UNFORESEEN CONDITIONS FOUND SHALL BE BROUGHT TO THE IMMEDIATE ATTENTION OF THE OWNER'S REPRESENTATIVE PRIOR TO STARTING THE SITE WORK. DO NOT BEGIN WORK IN SUCH AFFECTED AREA UNTIL THE DISCREPANCY HAS BEEN RESOLVED.
- ERECT AND INSTALL ALL WORK LEVEL, PLUMB, SQUARE, TRUE, STRAIGHT AND IN PROPER ALIGNMENT.
- DO NOT SCALE FROM DRAWINGS. USE DIMENSIONS SHOWN AND/OR SUPPLIED CAD DRAWING FILE AND SURVEY INTERPOLATION.
- DIMENSIONS NOTED "CLR" OR "CLEAR" MUST BE STRICTLY MAINTAINED ALLOWING FOR THICKNESS OF FINISHES. FIELD VERIFY PRIOR TO CONSTRUCTION.
- ANGLES ARE 90 DEGREES UNLESS NOTED OTHERWISE.
- CURVES FOR PAVING, BANDS, PATHS, EDGING AND HEADER BOARDS SHALL BE SMOOTH AND CONTINUOUS WITHOUT ABRUPT CHANGES, OBVIOUS TANGENTS OR BENDS.
- PITCH EVENLY BETWEEN SPOT GRADES AND CONTOUR LINES UNLESS GRADE BREAKS, RIDGELINES, SWALES ARE INDICATED OR OTHERWISE NOTED. PAVED AREAS SHALL PITCH AT A MINIMUM OF 1% UNLESS OTHERWISE NOTED ON DRAWINGS. DISCREPANCIES OR CONDITIONS NOT ALLOWING THIS TO OCCUR SHALL BE REPORTED TO THE OWNER'S REPRESENTATIVE FOR RESOLUTIONS PRIOR TO CONTINUING WORK.
- PEDESTRIAN SIDEWALKS AND PAVING SHALL HAVE A CROSS PITCH LESS THAN 2% UNLESS OTHERWISE NOTED TO MEET ADA REQUIREMENTS.

- REQUEST A FIELD REVIEW BY THE LANDSCAPE ARCHITECT OF THE LAYOUT OF ELEMENTS AS SHOWN. OBTAIN LANDSCAPE ARCHITECT'S APPROVAL OF LAYOUT BEFORE INSTALLING THE FOLLOWING:
  - FIRST TYPICAL SITE LIGHTING FIXTURES, JUNCTION BOXES, TRANSFORMERS.
  - FIRST TYPICAL SITE UTILITY FIXTURES, INCLUDING BUT NOT LIMITED TO BOXES, VAULTS, PULL BOXES, MAN HOLES, AIR RELEASE VALVES, VENTS, BFP, AND OTHER CIVIL, MECHANICAL, ELECTRICAL, PLUMBING, TELECOM, HEATING/COOLING, AND IRRIGATION STRUCTURES.
  - FIRST TYPICAL FORMWORK OF WALLS.
  - TREE LOCATIONS. STAKE ALL TREE LOCATIONS. OBTAIN APPROVAL OF LANDSCAPE ARCHITECT BEFORE PLANTING TREES.
  - FIRST TYPICAL CURVED EDGING AND CUTTING.
  - FIRST TYPICAL EXPANSION JOINTS IN CONCRETE PAVING.

## WORK BY OTHERS

- COOPERATE AND COORDINATE WITH OTHER CONTRACTORS WORKING CONCURRENTLY SO AS TO NOT VIOLATE EACH OTHER'S PERMITS AND TO AVOID DAMAGE TO EACH OTHER'S WORK.
- EACH CONTRACTOR SHALL PROTECT AND MAINTAIN THEIR OWN WORK FOR THE DURATION OF THEIR CONTRACTS.

## CODE COMPLIANCE

- WORK SHALL BE IN ACCORDANCE WITH APPLICABLE LAWS, CODES AND REQUIREMENTS OF REGULATORY AGENCIES HAVING JURISDICTION.
- NOTIFY THE OWNER'S REPRESENTATIVE OF DISCREPANCIES BETWEEN THE WORK AND APPLICABLE CODES. DO NOT WORK IN AN AFFECTED AREA UNTIL THE DISCREPANCY HAS BEEN RESOLVED.
- VERIFY CODES IN EFFECT AT THE TIME OF THE NOTICE TO PROCEED AND STAY CURRENT WITH CODE CHANGES WHICH AFFECT THE WORK UNTIL SUBSTANTIAL COMPLETION.
- IT IS THE SOLE RESPONSIBILITY OF THE CONTRACTOR TO OBTAIN AND PAY FOR CONSTRUCTION RELATED PERMITS.

## CODES IN EFFECT

- THE FOLLOWING CODES ARE APPLICABLE AND IN EFFECT:
  - REVISIONS TO THE APPROVED AND PERMITTED DRAWINGS OR DOCUMENTS SHALL BE SUBMITTED TO THE CODE AUTHORITIES FOR REVIEW. NOTIFY THE OWNER'S REPRESENTATIVE OF THE PROCESSING TIME FOR EACH REVISION SUBMITTED FOR PLAN CHECK.

## COPYRIGHT AND REPRODUCTION

- THE USE OF REPRODUCTIONS OF THE CONTRACT DOCUMENTS OR ELECTRONIC FILES AS SHOP DRAWING DOCUMENTS BY THE CONTRACTOR IS AT THEIR OWN RISK. THE DESIGN CONSULTANTS ASSUME NO LIABILITY AS A RESULT OF THE USE OF REPRODUCTIONS OF THE CONTRACT DOCUMENTS FOR SHOP DRAWINGS AND/OR DELEGATED DESIGN DRAWINGS.
- THE ENTIRE CONTRACT DOCUMENT PACKAGE HEREIN IS THE ORIGINAL AND UNPUBLISHED PROPERTY OF THE OWNER AND MAY NOT BE DUPLICATED, USED OR DISCLOSED WITHOUT THE PRIOR EXPLICIT WRITTEN CONSENT.
- THE USE OF DIGITAL DESIGN FILES SHALL REQUIRE THE CONTRACTOR TO AGREE TO PRIME CONSULTANT'S LICENSE CONDITIONS BEFORE USE.

## CONSTRUCTION LOADS, DAMAGES & REPAIRS

- THE CONTRACTOR IS SOLELY RESPONSIBLE FOR SLOPE STABILITY AND DE-WATERING DURING THE WORKS UNLESS UNKNOWN CONDITIONS ARE ENCOUNTERED.
- THE CONTRACTOR IS SOLELY RESPONSIBLE FOR PROTECTING THE WORKS FROM CONSTRUCTION LOADS AND DAMAGES TO EXISTING STRUCTURES TO REMAIN, NEW STRUCTURES AND NEW PAVEMENTS DURING THE WORKS.
- BE FULLY RESPONSIBLE FOR THE COST OF DAMAGES WHICH OCCUR AS A RESULT OF A FAILURE TO MITIGATE CONSTRUCTION LOADS AND/OR PROTECT THE WORKS FROM CONSTRUCTION RELATED IMPACTS. REPAIRS SHALL BE TO A NEW OR BETTER CONDITION COMPARED TO THE EXISTING CONDITION BEFORE DAMAGE, AND AS APPROVED BY THE OWNER'S REPRESENTATIVE.
- CONFIRM ON-STRUCTURE UNIFORM AND POINT LOAD LIMITS WITH ENGINEER PRIOR TO IMPORTING AND HANDLING LANDSCAPE MATERIALS OVER VAULTS, AND/OR TUNNELS, INCLUDING UTILITY STRUCTURES, AND FLOOD CONTROL STRUCTURES.

## CONSTRUCTION WASTE MANAGEMENT

- REMOVE FROM THE SITE EXCESS MATERIAL AND/OR DEBRIS. DISPOSAL OF MATERIALS IS THE RESPONSIBILITY OF THE CONTRACTOR. EXCESS MATERIAL AND/OR DEBRIS TO ABLE TO BE RECYCLED OR REUSED SHALL BE DISPOSED OF OFF THE PROJECT SITE IN A PERMITTED LANDFILL.

# EXISTING CONDITIONS & SITE REMOVAL NOTES

## SITE REMOVAL NOTES

- EXISTING SITE INFORMATION WAS PROVIDED BY OTHERS. ACTUAL FIELD CONDITIONS MAY VARY. FIELD VERIFY UTILITY LOCATIONS AND ELEVATIONS PRIOR TO CONSTRUCTION.
- THE LOCATIONS OF EXISTING UTILITIES SHOWN ON THIS PLAN HAVE BEEN DETERMINED FROM THE BEST INFORMATION AVAILABLE AND ARE GIVEN FOR THE CONVENIENCE OF THE CONTRACTOR. THE LANDSCAPE ARCHITECT ASSUMES NO RESPONSIBILITY FOR THEIR ACCURACY. PRIOR TO THE START OF DEMOLITION ACTIVITY, THE CONTRACTOR SHALL NOTIFY THE UTILITY COMPANIES FOR ONSITE LOCATIONS OF EXISTING UTILITIES. THE CONTRACTOR IS REQUIRED TO TAKE DUE PRECAUTIONARY MEASURES TO PROTECT EXISTING UTILITIES OR STRUCTURES LOCATED AT THE WORK SITE.
- CONTRACTOR TO VERIFY THE LOCATION OF UNDERGROUND UTILITIES PRIOR TO BEGINNING ANY CONSTRUCTION BY CALLING GOPHER STATE ONE-CALL AT 651-454-0002 (METRO) OR 1-800-252-1166 (OUT-STATE).
- THE CONTRACTOR SHALL COORDINATE WITH RESPECTIVE UTILITY COMPANIES PRIOR TO THE REMOVAL AND/OR RELOCATION OF UTILITIES. THE CONTRACTOR SHALL COORDINATE WITH THE UTILITY COMPANY CONCERNING PORTIONS OF WORK WHICH MAY BE PERFORMED BY UTILITY COMPANY'S FORCES AND FEES WHICH ARE TO BE PAID TO THE UTILITY COMPANY FOR THEIR SERVICES. THE CONTRACTOR IS RESPONSIBLE FOR PAYING FEES AND CHARGES.
- ALWAYS VERIFY BENCHMARK ELEVATIONS BETWEEN TWO BENCHMARKS.
- REMOVAL ITEMS BECOME THE PROPERTY OF THE CONTRACTOR UNLESS SPECIFIED OTHERWISE. THE CONTRACTOR IS RESPONSIBLE FOR REMOVING DEBRIS FROM THE SITE AND DISPOSING THE DEBRIS

- IN A LAWFUL MANNER PER LOCAL GOVERNING AGENCIES. THE CONTRACTOR IS RESPONSIBLE FOR OBTAINING PERMITS REQUIRED FOR DEMOLITION AND DISPOSAL. FACILITIES TO BE REMOVED SHALL BE UNDERCUT TO SUITABLE MATERIAL AND BROUGHT TO GRADE WITH SUITABLE COMPACTED FILL MATERIAL PER THE SPECIFICATIONS.
- PRIOR TO DEMOLITION, EROSION CONTROL DEVICES ARE TO BE INSTALLED WHERE NECESSARY AND OBTAIN AN NPDES STORM WATER PERMIT. REFER TO CIVIL FOR EROSION CONTROL.
- DAMAGE TO REMAINING EXISTING CONDITIONS WILL BE REPLACED AT CONTRACTOR'S EXPENSE AND SHALL BE EQUAL TO OR EXCEED THE QUALITY OF CONSTRUCTION PRIOR TO DAMAGE.
- CONCRETE PAVEMENT, SIDEWALKS, CURB AND GUTTER, AND OTHER POURED CONCRETE ITEMS ARE TO BE REMOVED TO AN EXISTING EXPANSION OR CONTRACTION JOINT.
- CONTRACTOR SHALL LIMIT SAW-CUT AND PAVEMENT REMOVAL TO ONLY THOSE AREAS WHERE IT IS REQUIRED AS SHOWN ON THESE CONSTRUCTION PLANS. IF DAMAGE IS INCURRED ON THE SURROUNDING PAVEMENT, ETC. THE CONTRACTOR SHALL BE RESPONSIBLE FOR ITS REMOVAL AND REPAIR AT NO ADDITIONAL COST TO THE OWNER. BITUMINOUS PAVEMENT REMOVALS ARE TO BE MADE WITH A VERTICAL SAW CUT OR TO A NEAT MILLED EDGE.
- CONTRACTOR SHALL PRESERVE VEGETATION NOT TO BE REMOVED BY CONSTRUCTION. CONTRACTOR SHALL BE RESPONSIBLE FOR RE-SEEDING OR SODDING AREAS DISTURBED BY CONSTRUCTION.
- LOCATION AND ELEVATIONS OF IMPROVEMENTS TO BE MET (OR AVOIDED) SHALL BE CONFIRMED BY THE CONTRACTOR THROUGH FIELD EXPLORATIONS PRIOR TO CONSTRUCTION. CONTRACTOR SHALL REPORT TO THE LANDSCAPE ARCHITECT DISCREPANCIES BETWEEN THEIR MEASUREMENTS AND THESE PLANS. CONTRACTOR SHALL ALSO MAKE EXPLORATIONS AND LOCATE EXISTING UNDERGROUND UTILITIES SUFFICIENTLY AHEAD OF CONSTRUCTION TO PERMIT REVISIONS TO PLANS IF REVISIONS ARE NECESSARY BECAUSE OF ACTUAL LOCATION OF EXISTING FACILITIES. CONTRACTOR IS REQUIRED TO TAKE PRECAUTIONARY MEASURES TO PROTECT THE UTILITY LINES SHOWN AND OTHER EXISTING LINES NOT OF RECORD OR NOT SHOWN ON THESE PLANS.
- EXISTING UTILITIES TO REMAIN IN PLACE UNLESS SPECIFICALLY MARKED ON THIS SHEET.

# SITE AND LANDSCAPE NOTES

## SITE PREPARATION NOTES

- CONTRACTOR SHALL INSPECT THE SITE AND BECOME FAMILIAR WITH EXISTING CONDITIONS RELATING TO THE NATURE AND SCOPE OF WORK.
- CONTRACTOR SHALL VERIFY PLAN LAYOUT AND BRING TO THE ATTENTION OF THE LANDSCAPE ARCHITECT DISCREPANCIES WHICH MAY COMPROMISE THE DESIGN OR INTENT OF THE LAYOUT.
- CONTRACTOR SHALL ASSURE COMPLIANCE WITH APPLICABLE CODES AND REGULATIONS GOVERNING THE WORK AND MATERIALS SUPPLIED.
- CONTRACTOR SHALL PROTECT EXISTING ROADS, CURBS/GUTTERS, TRAILS, TREES, LAWNS AND SITE ELEMENTS DURING CONSTRUCTION OPERATIONS. DAMAGE TO SAME SHALL BE REPAIRED AT NO ADDITIONAL COST TO THE OWNER.
- CONTRACTOR SHALL VERIFY ALIGNMENT AND LOCATION OF UNDERGROUND AND ABOVE GRADE UTILITIES AND PROVIDE THE NECESSARY PROTECTION FOR SAME BEFORE CONSTRUCTION BEGINS (MINIMUM 10' CLEARANCE).
- CONTRACTOR SHALL COORDINATE THE PHASES OF CONSTRUCTION AND PLANTING INSTALLATION WITH OTHER CONTRACTORS WORKING ON SITE.
- EXISTING CONTOURS, TRAILS, VEGETATION, CURB/GUTTER AND OTHER ELEMENTS ARE BASED UPON INFORMATION SUPPLIED TO THE LANDSCAPE ARCHITECT BY OTHERS. CONTRACTOR SHALL VERIFY DISCREPANCIES PRIOR TO CONSTRUCTION AND NOTIFY LANDSCAPE ARCHITECT OF SAME.
- CONTRACTOR SHALL REVIEW THE SITE FOR DEFICIENCIES IN SITE CONDITIONS WHICH MIGHT NEGATIVELY AFFECT PLANT ESTABLISHMENT, SURVIVAL OR WARRANTY. UNDESIRABLE SITE CONDITIONS SHALL BE BROUGHT TO THE ATTENTION OF THE LANDSCAPE ARCHITECT PRIOR TO COMMENCEMENT OF WORK.
- CONTRACTOR IS RESPONSIBLE FOR ONGOING MAINTENANCE OF NEWLY INSTALLED MATERIALS UNTIL TIME OF SUBSTANTIAL COMPLETION. REPAIR OF ACTS OF VANDALISM OR DAMAGE WHICH MAY OCCUR PRIOR TO SUBSTANTIAL COMPLETION SHALL BE THE RESPONSIBILITY OF THE LANDSCAPE CONTRACTOR.
- CONTRACTOR SHALL PREPARE AND SUBMIT A WRITTEN REQUEST FOR THE SUBSTANTIAL COMPLETION INSPECTION OF LANDSCAPE AND SITE IMPROVEMENTS PRIOR TO SUBMITTING FINAL PAY REQUEST.
- SYMBOLS ON PLAN DRAWING TAKE PRECEDENCE OVER SCHEDULES IF DISCREPANCIES IN QUANTITIES EXIST. SPECIFICATIONS AND DETAILS TAKE PRECEDENCE OVER NOTES.
- CONTRACTOR SHALL PROVIDE PROPER EROSION CONTROL MEASURES AS REQUIRED TO ENSURE THAT EROSION IS KEPT TO AN ABSOLUTE MINIMUM.

## SOIL TESTING

- CONTRACTOR SHALL OBTAIN A SOIL SAMPLE(S) FROM PROJECT SITE AND/OR SALVAGED TOPSOIL STOCKPILE AND SUBMIT TO INDEPENDENT TESTING AGENCY. ANALYSIS AND RECOMMENDATIONS FOR (INCLUDING BUT NOT LIMITED TO) MACRONUTRIENTS, MICRONUTRIENTS, COMPOSITION AND SOLUBLE SALTS SHALL BE PROVIDED.
- CONTRACTOR SHALL PROVIDE ANALYSIS RESULTS AND RECOMMENDATIONS TO THE LANDSCAPE ARCHITECT FOR REVIEW AND APPROVAL PRIOR TO SOIL AMENDMENT AND PRIOR TO PLANTING.

## PLANTING

- SPRING PLANT MATERIAL INSTALLATION IS FROM APRIL 15 TO JUNE 15.
- FALL CONIFEROUS PLANTING IS ACCEPTABLE FROM AUGUST 21 TO SEPTEMBER 30.
- FALL DECIDUOUS PLANTING IS ACCEPTABLE FROM AUGUST 15 UNTIL NOVEMBER 15.
- ADJUSTMENTS TO PLANTING DATES MUST BE APPROVED IN WRITING BY THE LANDSCAPE ARCHITECT.
- STAKE PROPOSED PLANTING LOCATIONS PER PLAN FOR REVIEW AND APPROVAL BY LANDSCAPE ARCHITECT PRIOR TO INSTALL.
- PLANT MATERIAL SHALL COMPLY WITH THE CURRENT EDITION OF THE AMERICAN STANDARD FOR NURSERY STOCK, ANSI Z60.1, UNLESS NOTED OTHERWISE. DECIDUOUS SHRUBS SHALL HAVE AT

- LEAST 5 CANES AT THE SPECIFIED HEIGHT. ORNAMENTAL TREES SHALL HAVE NO "V" CROTCHES AND SHALL BEGIN BRANCHING NO LOWER THAN 3' FEET ABOVE THE ROOT BALL. STREET AND BOULEVARD TREES SHALL BEGIN BRANCHING NO LOWER THAN 6' ABOVE PAVED SURFACE.
- INSTALL PLANT MATERIAL AFTER FINAL GRADING AND CONSTRUCTION HAS BEEN COMPLETED IN THE IMMEDIATE AREA.
- INSTALL PLANT MATERIALS PER PLANTING DETAILS.
- SUBSTITUTION REQUESTS FOR PLANT MATERIAL TYPE & SIZE SHALL BE SUBMITTED TO THE LANDSCAPE ARCHITECT FOR CONSIDERATION PRIOR TO BIDDING. SUBSTITUTIONS AFTER BIDDING MUST BE APPROVED BY LANDSCAPE ARCHITECT AND ARE SUBJECT TO CONTRACT ADJUSTMENTS.
- ADJUSTMENTS IN LOCATION OF PROPOSED PLANT MATERIALS MAY BE NEEDED IN FIELD. LANDSCAPE ARCHITECT MUST BE NOTIFIED PRIOR TO ADJUSTMENT OF PLANTS.
- FERTILIZE PLANT MATERIAL UPON INSTALLATION WITH DRIED BONE MEAL AND OTHER APPROVED FERTILIZER MIXED IN WITH THE PLANTING SOIL (PER THE MANUFACTURER'S INSTRUCTIONS) OR TREAT FOR SUMMER AND FALL INSTALLATION WITH AN APPLICATION OF GRANULAR 10-0-5 OF 12 OZ. PER 2.5" CALIPER TREE AND 6 OZ. PER SHRUB WITH AN ADDITIONAL APPLICATION OF 10-10-10 THE FOLLOWING SPRING IN THE TREE SAUCER.]
- TREE WRAPPING MATERIAL SHALL BE PAPER APPLIED FROM TRUNK FLARE TO FIRST BRANCH. WRAP SMOOTH-BARKED DECIDUOUS TREES PLANTED IN THE FALL PRIOR TO DECEMBER 1 AND REMOVE WRAPPING AFTER MAY 1. APPLY PRE-EMERGENT HERBICIDE (PREEN OR APPROVED EQUAL) IN ANNUAL, PERENNIAL, AND SHRUB BEDS FOLLOWED BY SHREDDED HARDWOOD MULCH. REFER TO SPECIFICATIONS FOR ADDITIONAL INFORMATION REGARDING USE OF HERBICIDES.

## MULCHING

- INSTALL 4" DEEP FINELY SHREDDED HARDWOOD MULCH RINGS AT CONIFEROUS & DECIDUOUS TREES WITH NO MULCH IN DIRECT CONTACT WITH TREE TRUNK.

## WATERING

- PLANTED MATERIALS SHALL BE WATERED BY TEMPORARY MEANS UNTIL PLANTS ARE ESTABLISHED.
- TEMPORARY WATERING MEANS, METHODS, AND SCHEDULING SHALL BE THE CONTRACTOR'S RESPONSIBILITY. REMOVE TEMPORARY WATERING EQUIPMENT UPON PLANT ESTABLISHMENT.

## WARRANTY

- WARRANTY NEW PLANT MATERIAL THROUGH ONE CALENDAR YEAR FROM THE DATE OF SUBSTANTIAL COMPLETION. NO PARTIAL ACCEPTANCE WILL BE CONSIDERED.

# ABBREVIATIONS

APPROX AVG	APPROXIMATE AVERAGE	PB	PULL BOX
BLDG	BUILDING	PC	POINT OF CURVE
BM	BENCHMARK	PCC	PRECAST CONCRETE
BOS	BOTTOM OF STAIR	PERF	PERFORATED
BOT	BOTTOM	PERP	PERPENDICULAR
C	CHILLER	pH	ACID/ALKALINE SCALE
CB	CATCH BASIN	PH	PHASE
CIP	CAST-IN-PLACE	PI	POINT OF INTERSECTION
CJ	CONTROL JOINT	PKG	PACKAGE
CL	CENTER LINE	PL	PROPERTY LINE
CLR	CLEAR	PLBG	PLUMBING
LL	CONTRACT LIMIT LINE	PRCST	PRECAST
CMU	CONCRETE MASONRY UNIT	PREFAB	PREFABRICATE
CONC	CONCRETE	PROV	PROVISIONAL
CTR	CENTER	PVC	POLYVINYL CHLORIDE
		PWR	POWER
DAT	DATUM	QTR	QUARTER
DEG	DEGREE	QTY	QUANTITY
DIA	DIAMETER	R	RADIUS
DIM	DIMENSION	RCP	REINFORCED CONCRETE PIPE
DIST	DISTANCE	RECIRC	RECIRCULATE
DIV	DIVISION	RECPT	RECEPTACLE
DWG	DRAWING	REINF	REINFORCE
		REQD	REQUIRED
E	EAST	REV	REVISION
EA	EACH	RLG	RAILING
EJ	EXPANSION JOINT	ROW	RIGHT OF WAY
EL	ELEVATION	S	SOUTH
EP	EDGE OF PAVEMENT	SALV	SALVAGE
EQ	EQUAL	SEG	SEGMENT
EQSP	EQUAL SPACING	SHT	SHEET
EQUIV	EQUIVALENT	SIM	SIMILAR
EX	EXISTING	SPEC	SPECIFICATION
		SO	SQUARE
F	FAHRENHEIT	SSD	SUBSOIL DRAIN
FC	FOOTCANDLE	SST	STAINLESS STEEL
FFE	FINISH FLOOR ELEVATION	STA	STATION
FF&E	FURNITURE, FIXTURE, AND EQUIPMENT	STD	STANDARD
FG	FINISHED GRADE	SUCT	SUCTION
FOC	FACE OF CURB	T	TRANSFORMER
FOW	FACE OF WALL	TAN	TANGENT
FV	FIELD VERIFY	TBD	TO BE DETERMINED
		TB-XX	TEST BORING
GALV	GALVANIZED	TD	TRENCH DRAIN
GDR	GUARDRAIL	TEMP	TEMPORARY
		THK	THICKNESS
H	HIGH	THRU	THROUGH
HB	HOSE BIBB	TO	TOP OF
HDPE	HIGH DENSITY POLYETHYLENE	TOC	TOP OF CURB
HH	HAND HOLE	TOL	TOLERANCE
HDR	HANDRAIL	TOS	TOP OF SLOPE
HORIZ	HORIZONTAL	TOW	TOP OF WALL
HT	HEIGHT	TR	TRASH
HV	HIGH VOLTAGE	TS	TOP OF STAIR
		TYP	TYPICAL
ID	INSIDE DIMENSION	UGND	UNDERGROUND
INV.EL	INVERT ELEVATION	UNIF	UNIFORM
		UP	UTILITY POLE
KW	KILOWATT	UV	ULTRAVIOLET
LDPE	LOW DENSITY POLYETHYLENE	VAR	VARIES
LED	LIGHT EMITTING DIODE	VERT	VERTICAL
LF	LINEAR FEET	VRFY	VERIFY
LPT	LOW POINT		
LTD	LIMITED	W	WEST
LV	LOW VOLTAGE	W/	WITH
LW	LOW WATER	W/O	WITHOUT
		WL	WATERLINE
MAX	MAXIMUM	WLD	WELDED
MFR.REC	MANUFACTURER'S RECOMMENDATIONS	WT.EL	WATER ELEVATION
MH	MANHOLE	XFMR	TRANSFORMER
MID	MIDDLE	YR	YEAR
MIN	MINIMUM		
N	NORTH	@	AT
NA	NOT APPLICABLE	&	AND
NIC	NOT IN CONTRACT	- / +	DIMENSION TOLERANCE
NO	NUMBER	IJ	ISOLATION JOINT
NOM	NOMINAL	HW	HIGH WATER
NTS	NOT TO SCALE	NP	NORMAL POOL
		GB	GRADE BREAK



310 South 4th Avenue, Suite 7050  
Minneapolis, MN 55415  
p. 612.332.7522

100% CONSTRUCTION SET FOR CONTRACTOR QUOTES

TREE PLANTING PLAN

# THE WATERFRONT

RAMSEY, MINNESOTA

I hereby certify that this document was prepared by me or under my direct supervision and that I am a duly licensed Landscape Architect under the laws of the State of Minnesota.

Name: Charles Evens  
Registration#: 50575  
Signature: *Charles Evens*  
Date: 03/08/2024

Date	03/08/2024
Df/ Project #	23-176
Scale	AS SHOWN
Drawn/Checked	AG/CE
REVISION	--

NOTES, ABBREVIATIONS & SYMBOLS

G002

PLANT SCHEDULE						
SYMBOL	CODE	QTY	BOTANICAL NAME	COMMON NAME	SIZE	CONT.
<b>TREES</b>						
	AB	3	ACER NIGRUM	BLACK MAPLE	1" CAL.	BARE ROOT
	AR	2	ACER RUBRUM	RED MAPLE	2.5" CAL.	B&B
	AS	10	ACER SACCHARUM	SUGAR MAPLE	1" CAL.	BARE ROOT
	BA	2	BETULA ALLEGHANIENSIS	YELLOW BIRCH	2.5" CAL.	B&B
	BP	2	BETULA PAPYRIFERA	PAPER BIRCH	2.5" CAL.	B&B
	BP2	6	BETULA PENDULA	EUROPEAN WHITE BIRCH	2.5" CAL.	B&B
	CC	3	CARYA CORDIFORMIS	BITTERNUT HICKORY	1" CAL.	BARE ROOT
	LL	6	LARIX LARICINA	TAMARACK	6' HT.	B&B
	OV	3	OSTRYA VIRGINIANA	AMERICAN HOPHORNBEAM	1" CAL.	BARE ROOT
	PB	2	PICEA MARIANA	BLACK SPRUCE	6' HT.	B&B
	PR	3	PINUS RESINOSA	RED PINE	6' HT.	B&B
	PS2	5	PINUS STROBUS	WHITE PINE	6' HT.	B&B
	QR	3	QUERCUS RUBRA	RED OAK	2.5" CAL.	B&B
	TA	4	TILIA AMERICANA	AMERICAN LINDEN	1" CAL.	BARE ROOT
	TC	3	TSUGA CANADENSIS	EASTERN HEMLOCK	6' HT.	B&B
	UR	3	ULMUS RUBRA	SLIPPERY ELM	1" CAL.	BARE ROOT

100% CONSTRUCTION  
SET FOR CONTRACTOR  
QUOTES

TREE PLANTING PLAN

## THE WATERFRONT

RAMSEY, MINNESOTA

I hereby certify that this document was prepared by me or under my direct supervision and that I am a duly licensed Landscape Architect under the laws of the State of Minnesota.

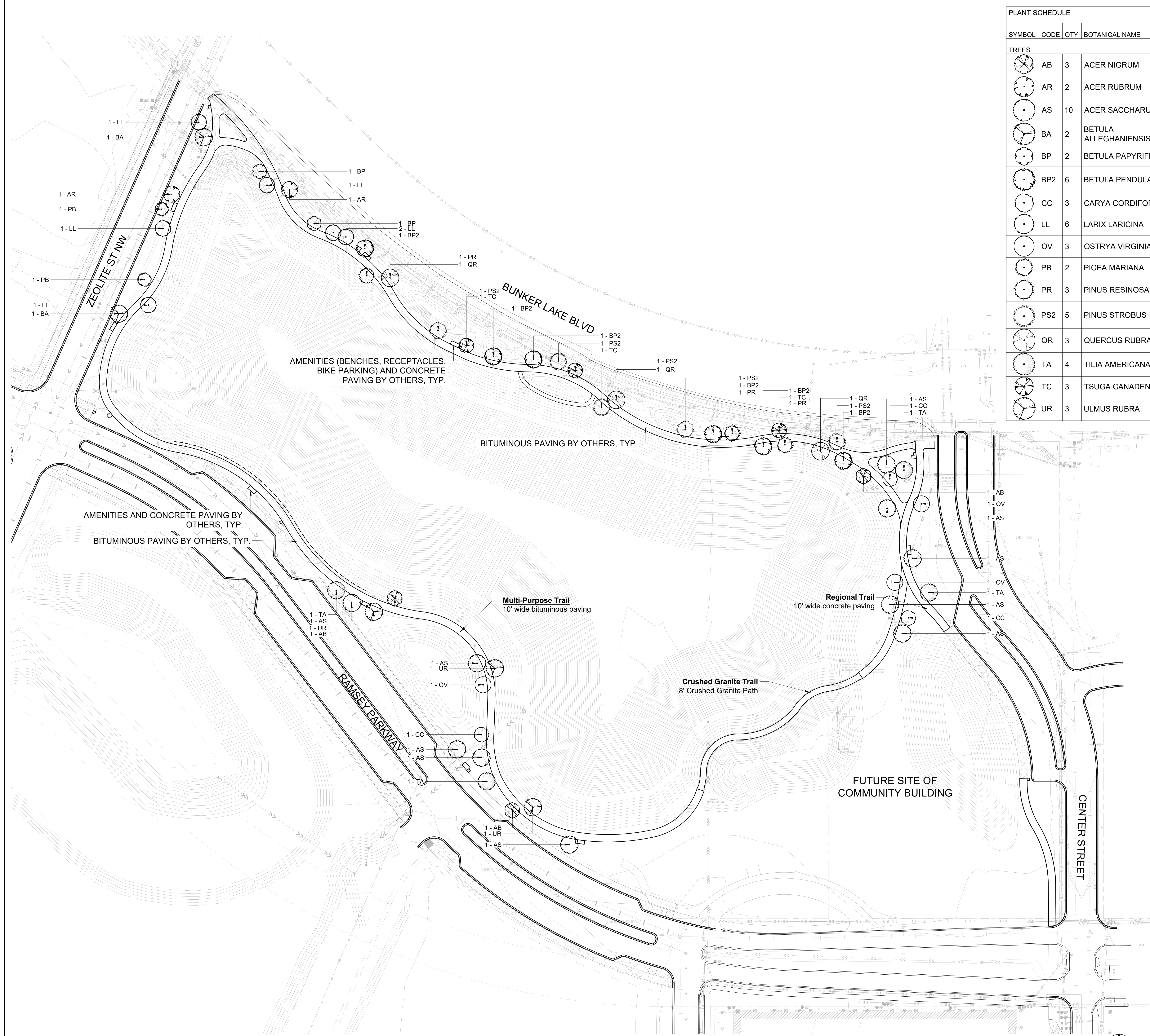
Name: Charles Evens  
Registration#: 50575  
Signature: Date: 03/08/2024

Date: 03/08/2024  
DF/ Project #: 23-176  
Scale: AS SHOWN  
Drawn/Checked: AG/CE

REVISION: --

TREE  
PLANTING  
PLAN

# L100



100% CONSTRUCTION  
SET FOR CONTRACTOR  
QUOTES

TREE PLANTING PLAN

## THE WATERFRONT

RAMSEY, MINNESOTA

I hereby certify that this document was prepared by me or under my direct supervision and that I am a duly licensed Landscape Architect under the laws of the State of Minnesota.

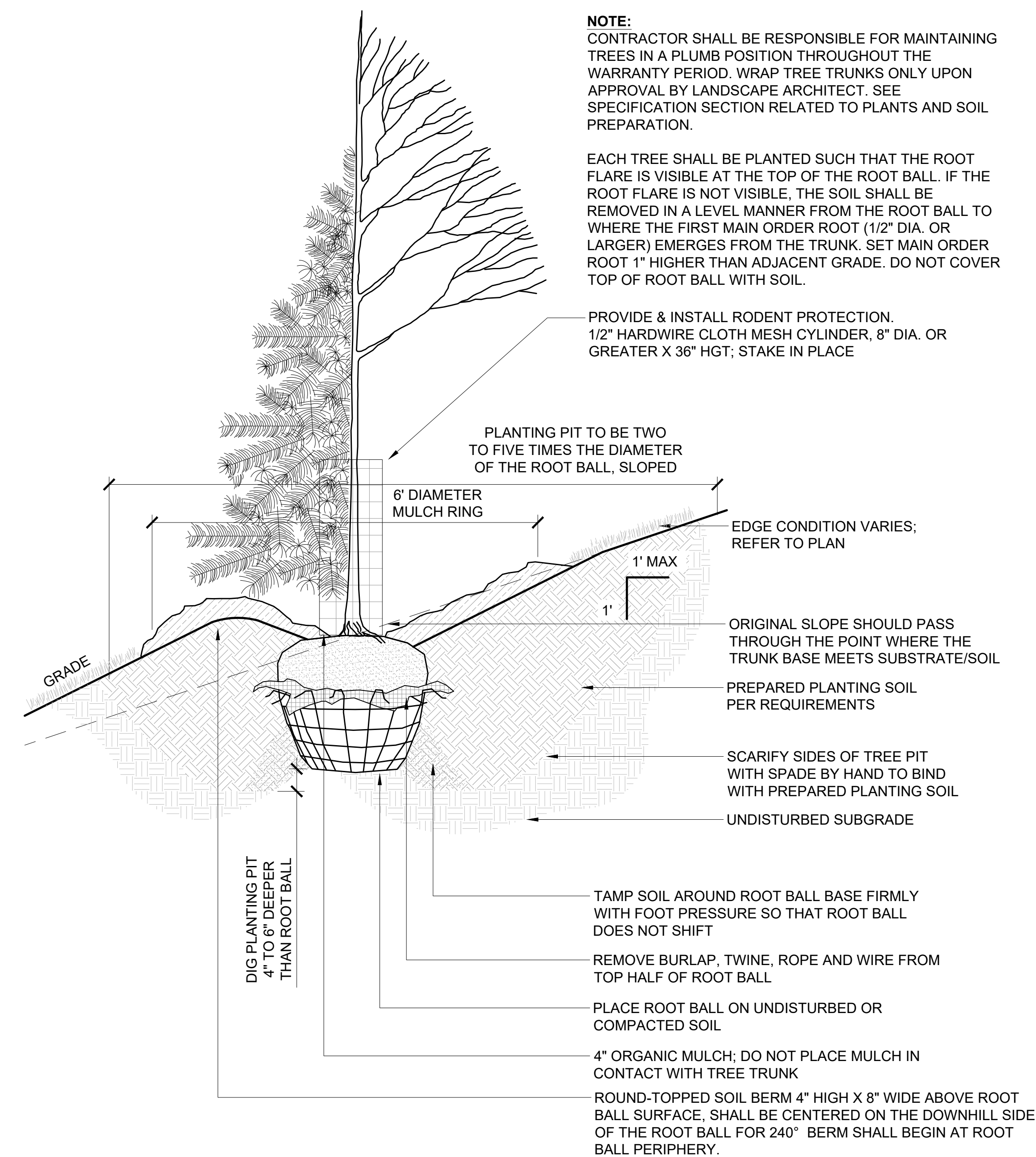
Name Charles Evens  
Registration# 50575  
*Charles Evens*  
Signature 03/08/2024 Date

Date 03/08/2024  
DF/ Project # 23-176  
Scale AS SHOWN  
Drawn/Checked AG/CE

REVISION --

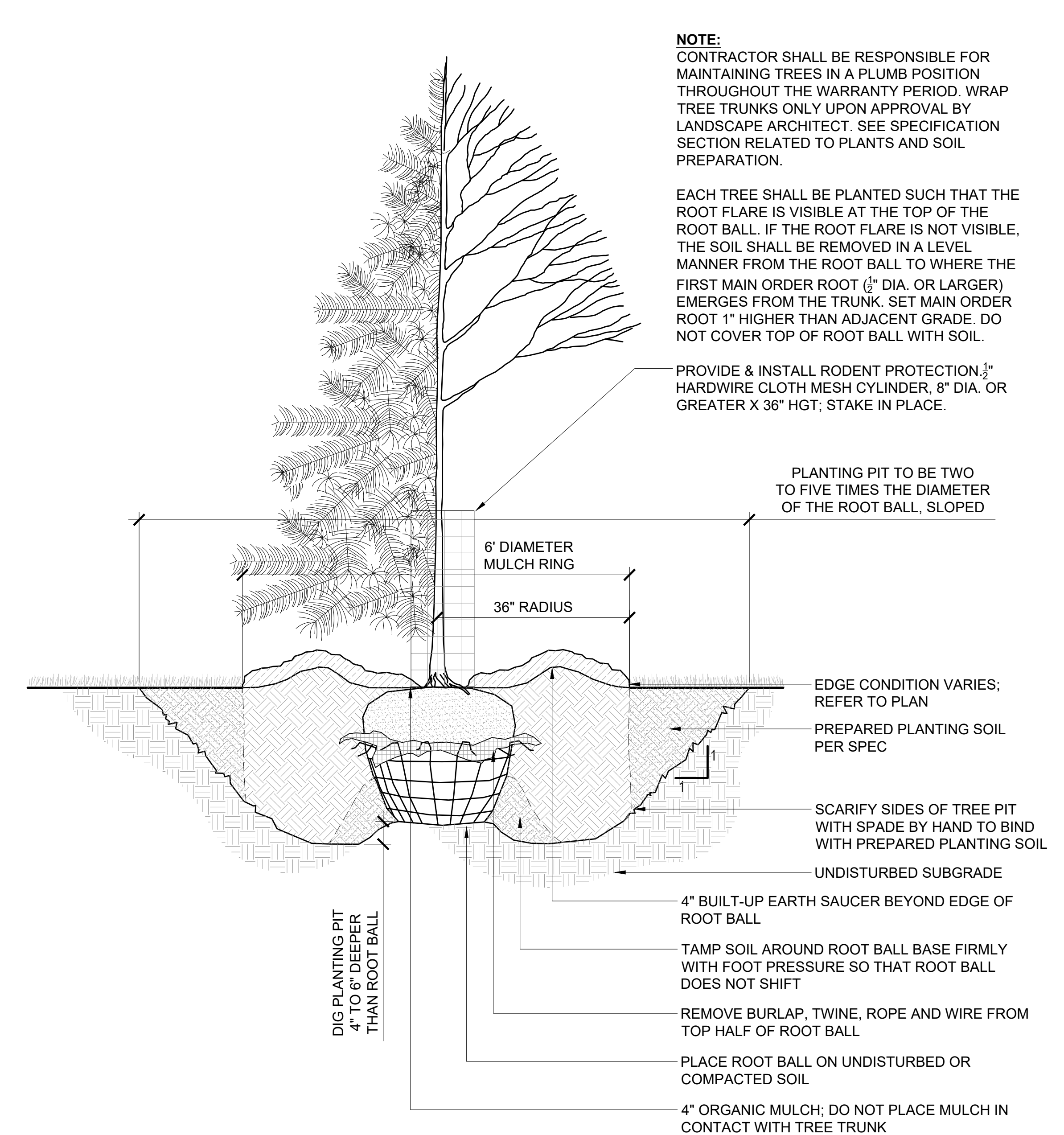
SITE DETAILS

# L500



2 DETAIL - TREE PLANTING ON SLOPE 5% (20:1) TO 50% (2:1)  
3/4" = 1'-0"

P-23 176-29



1 DETAIL - TREE PLANTING  
3/4" = 1'-0"

P-23 176-01