

FRONT ELEVATION
TAKE 5
OIL CHANGE
 11851 Hanson Blvd NW
 Coon Rapids, MN 55448

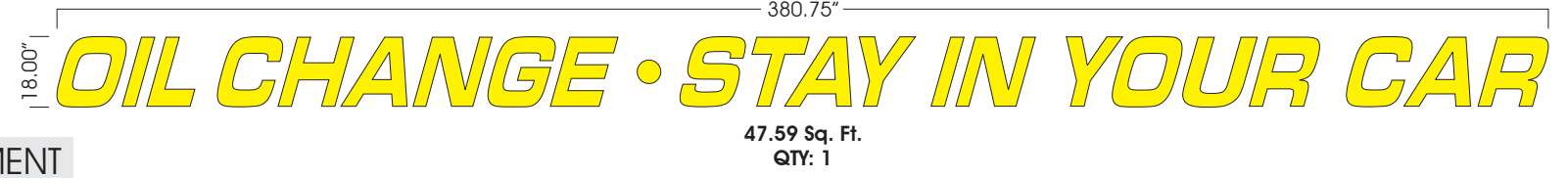
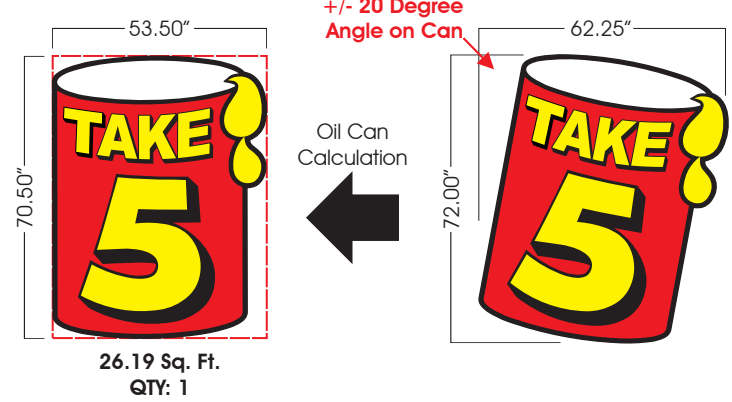
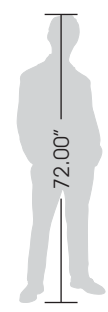
UL Underwriters Laboratories Inc.®
 UL File #E225670

Copyright Notice ©
 This drawing and all reproductions thereof are the property of Signs Unlimited, Inc. and may not be reproduced, published, changed or used in any way without written consent.

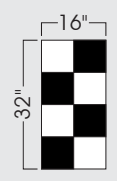
PROOF
 Sq. Ft. Signage: 73.78
 Signage Allowance: 100.75 Sq. Ft. (10% of Wall)
 Zoned GC, City of Coon Rapids

INITIAL LAYOUT: April 6, 2023
REVISIONS:

I
 II
 III
 IV
 V



ADDITIONAL ELEMENT

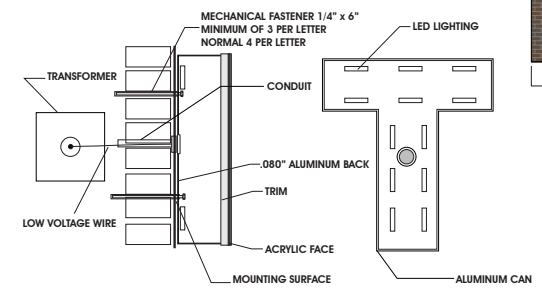


ALUMINUM PANS
 Quantity: 4
 Size: As in drawing
 Color: Black and White
 Returns: 1
 Mounting: Angle into facade

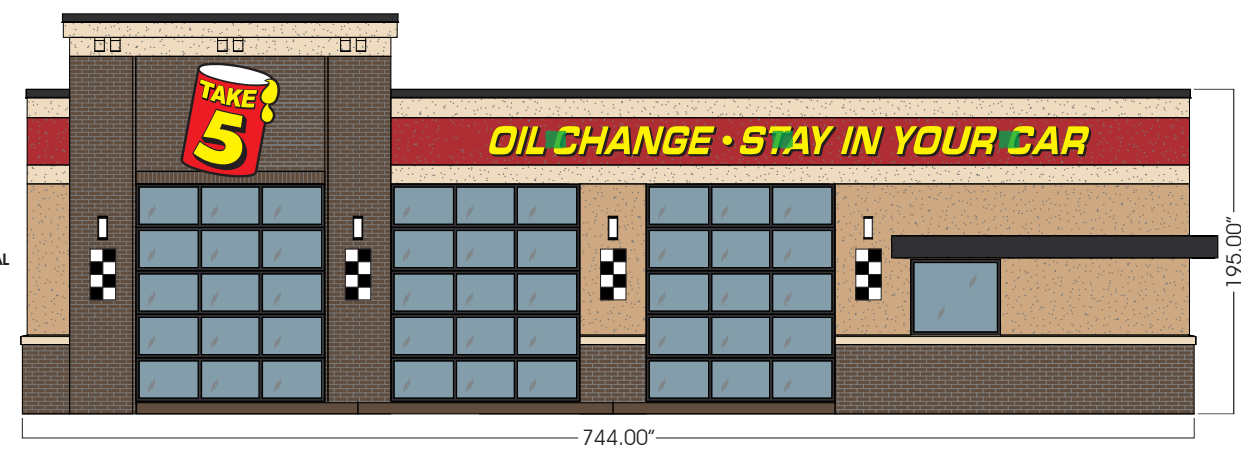
NOTE:
 • CENTERED UNDER LIGHTS & 6" DOWN FROM BOTTOM OF SCORCE VERTICALLY. IF SCORCE IS NOT IN PLACE, INSTALL PAN 8' FROM GRADE TO TOP OF PAN

- GENERAL LOCATION OF J-BOXES (BY ELECTRICIAN)
- TO BE LOCATED INSIDE BUILDING & ACCESSIBLE FOR HOOKUP TO POWER SUPPLIES.
- NOTE: IF THE PERMANENT POWER IS NOT RUN BEFORE THE SIGNS ARE INSTALLED, IT IS THE ELECTRICIAN'S RESPONSIBILITY TO MAKE THE FINAL CONNECTIONS WHEN THEY RUN THE LINES

DETAIL



IMPOSED IMAGERY



NOTE:
 • IF ELECTRICAL LINE/J-BOX IS WITHIN 6' OF ELECTRICAL, CONNECTION TO BE HANDLED BY INSTALLER. IF NOT, ELECTRICAL HANDLED BY GC/OWNER
 • IF ROOF PENETRATIONS ARE NECESSARY, THEY ARE TO BE SEALED BY A ROOFER. HANDLED BY THE GC/OWNER
 • REMOVAL AND DISPOSAL OF EXISTING WALL SIGNS HANDLED BY GC/OWNER

SPECIFICATIONS

ILLUMINATED CHANNEL LETTERS

- Size:** As in drawing
- Trim:** 1"
- Trim Color:** Black
- Return Color:** Black
- Return Depth:** 5"
- Face Color:** See above
- Face:** 1/8" Acrylic
- Letter Interior:** Gloss White
- Illumination:** LED
- Mounting:** Studded Letters

Owner/Landlord Approval _____

SIGNS UNLIMITED
 communicate your identity

6801 Mount Hermon Church Rd, Ste C, Durham, NC 27705 • (P) 919-552-8689 • (F) 919-557-1322

SIDE A ELEVATION

TAKE 5

OIL CHANGE

11851 Hanson Blvd NW
Coon Rapids, MN 55448



Underwriters Laboratories Inc.®
UL File #E225670

Copyright Notice ©

This drawing and all reproductions thereof are the property of Signs Unlimited, Inc. and may not be reproduced, published, changed or used in any way without written consent.

PROOF

Sq. Ft. Signage:
29.58

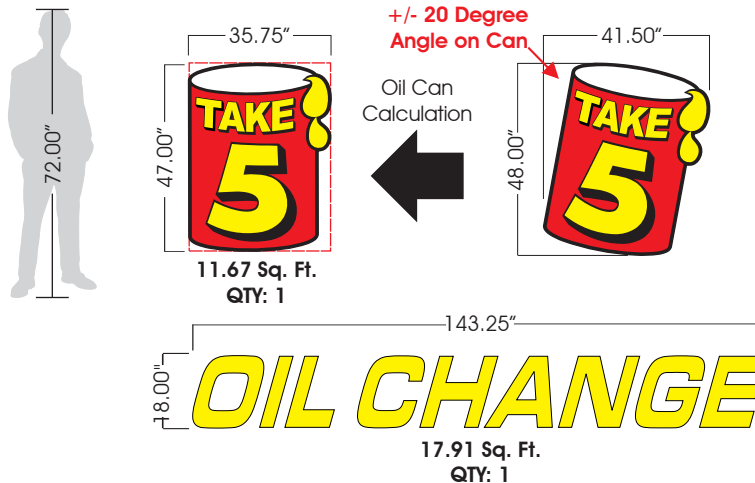
Signage Allowance:
48.75 Sq. Ft.
(10% of Wall)
Zoned GC,
City of Coon Rapids

INITIAL LAYOUT:

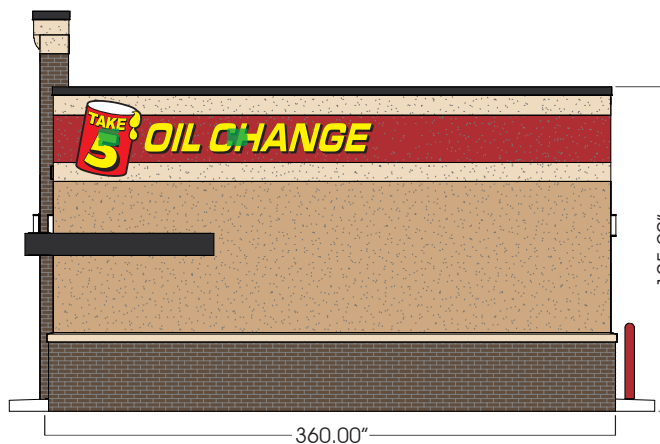
April 6, 2023

REVISIONS:

- I 4/25/23
- II -
- III -
- IV -
- V -



IMPOSED IMAGERY



NOTE:

- IF ELECTRICAL LINE/J-BOX IS WITHIN 6' OF ELECTRICAL, CONNECTION TO BE HANDLED BY INSTALLER. IF NOT, ELECTRICAL HANDLED BY GC/OWNER
- IF ROOF PENETRATIONS ARE NECESSARY, THEY ARE TO BE SEALED BY A ROOFER. HANDLED BY THE GC/OWNER
- REMOVAL AND DISPOSAL OF EXISTING WALL SIGNS HANDLED BY GC/OWNER

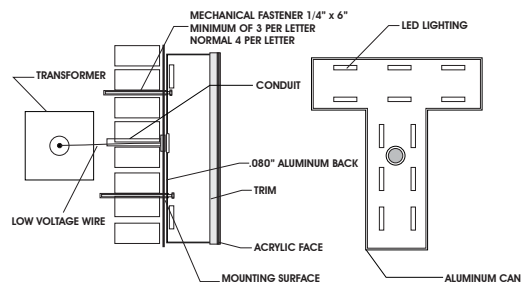
SPECIFICATIONS

ILLUMINATED CHANNEL LETTERS

- Size: As in drawing
- Trim: 1"
- Trim Color: Black
- Return Color: Black
- Return Depth: 5"
- Face Color: See above
- Face: 1/8" Acrylic
- Letter Interior: Gloss White
- Illumination: LED
- Mounting: Studded Letters

- GENERAL LOCATION OF J-BOXES (BY ELECTRICIAN)
 - TO BE LOCATED INSIDE BUILDING & ACCESSIBLE FOR HOOKUP TO POWER SUPPLIES.
- NOTE: IF THE PERMANENT POWER IS NOT RUN BEFORE THE SIGNS ARE INSTALLED, IT IS THE ELECTRICIAN'S RESPONSIBILITY TO MAKE THE FINAL CONNECTIONS WHEN THEY RUN THE LINES

DETAIL



Owner/Landlord Approval _____

SIGNS UNLIMITED
communicate your identity

6801 Mount Hermon Church Rd, Ste C, Durham, NC 27705 • (P) 919-552-8689 • (F) 919-557-1322

DIRECTIONAL SIGNAGE

TAKE 5
OIL CHANGE
11851 Hanson Blvd NW
Coon Rapids, MN 55448

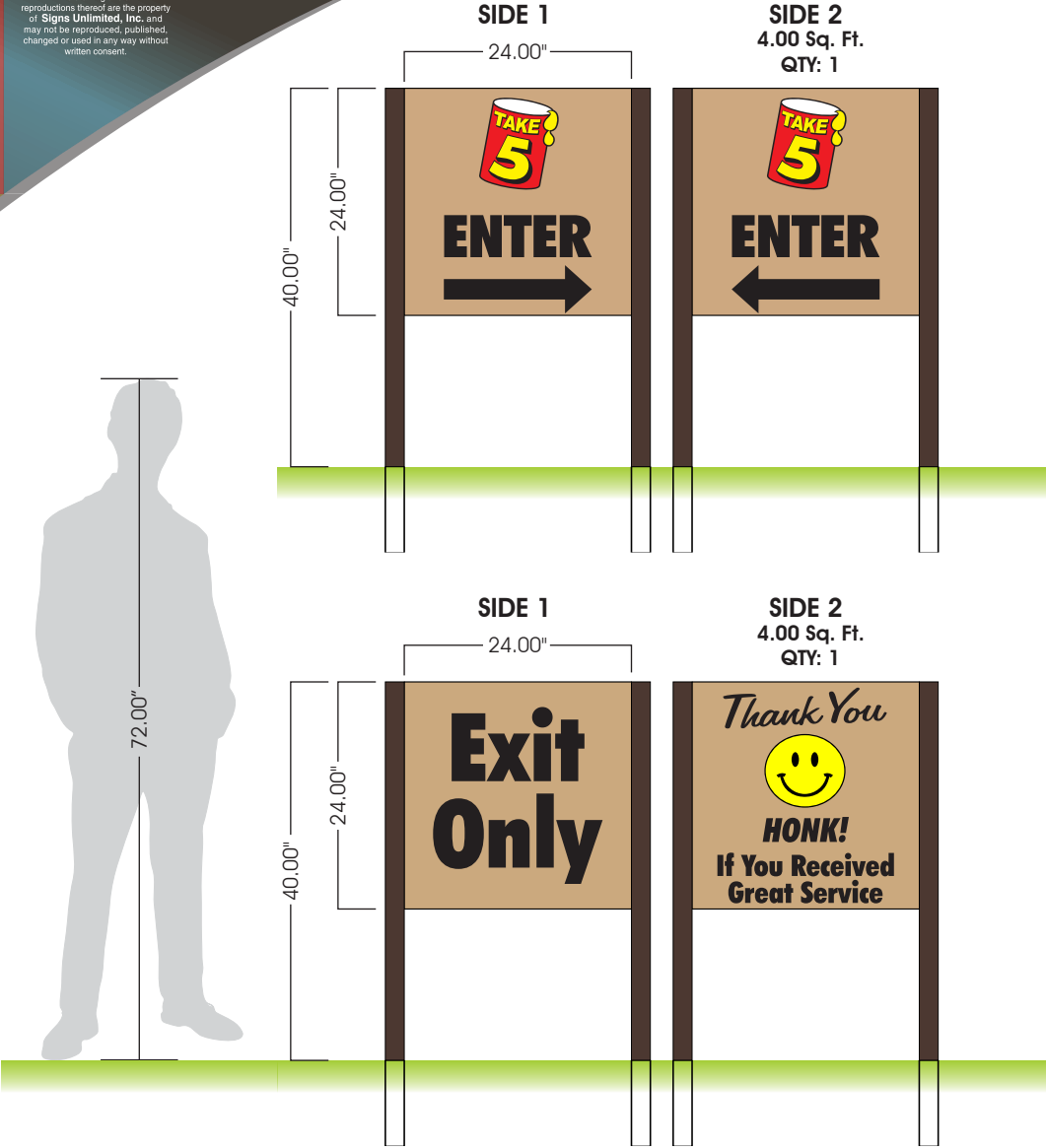


Underwriters Laboratories Inc. •
UL File #E225670

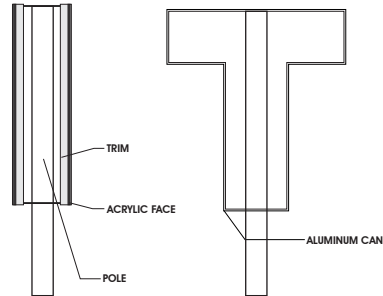
Copyright Notice ©
This drawing and all
reproductions thereof are the property
of Signs Unlimited, Inc. and
may not be reproduced, published,
changed or used in any way without
written consent.

INITIAL LAYOUT: April 6, 2023

- REVISIONS:
- I
 - II
 - III
 - IV
 - V



DETAILS



NOTE:
• ALL WAYFINDING HOLES MUST BE HAND DUG TO AVOID DAMAGING UNMARKED UNDERGROUND LINES

SPECIFICATIONS

NON ILLUMINATED
DOUBLE-SIDED POST & PANEL

- Size:** As In Drawing
- Material:** Aluminum Square Tubing & Panels
- Face Color:** SW 7693 Stonebriar And As Determined By Message
- Leg Color:** SW 6076 Turkish Coffee
- Mounting:** Into Earth

Owner/Landlord Approval _____

