



2727 N. CENTRAL AVENUE
PHOENIX, ARIZONA 85004
P: 602.263.6841



Preliminary Proposal

SHEET 01

©2024 ALL RIGHTS RESERVED 2024-07-17



9"H x 3"D EYEBROW TRIMS CREATE AN ARCHITECTURAL DESIGN ELEMENT, PROVIDING INTEREST AT THE SKYLINE

CURVILINEAR CORNICE TO ACCENTUATE BUILDING ELEMENTS

VERTICAL OFFSETS CREATE A PATTERN OF LIGHT, SHADOW, AND LYRICAL ARTICULATION

PROMINENT OVERHANG OVER CUSTOMER ENTRANCE AREA, CREATES ARCHITECTURAL INTEREST WHILE PROTECTING CUSTOMERS FROM THE ELEMENTS.



2727 N. CENTRAL AVENUE
PHOENIX, ARIZONA 85004
P: 602.263.6841



of Ramsey
Ramsey, MN
(729074)

Southeast Elevation
Composite Rendering

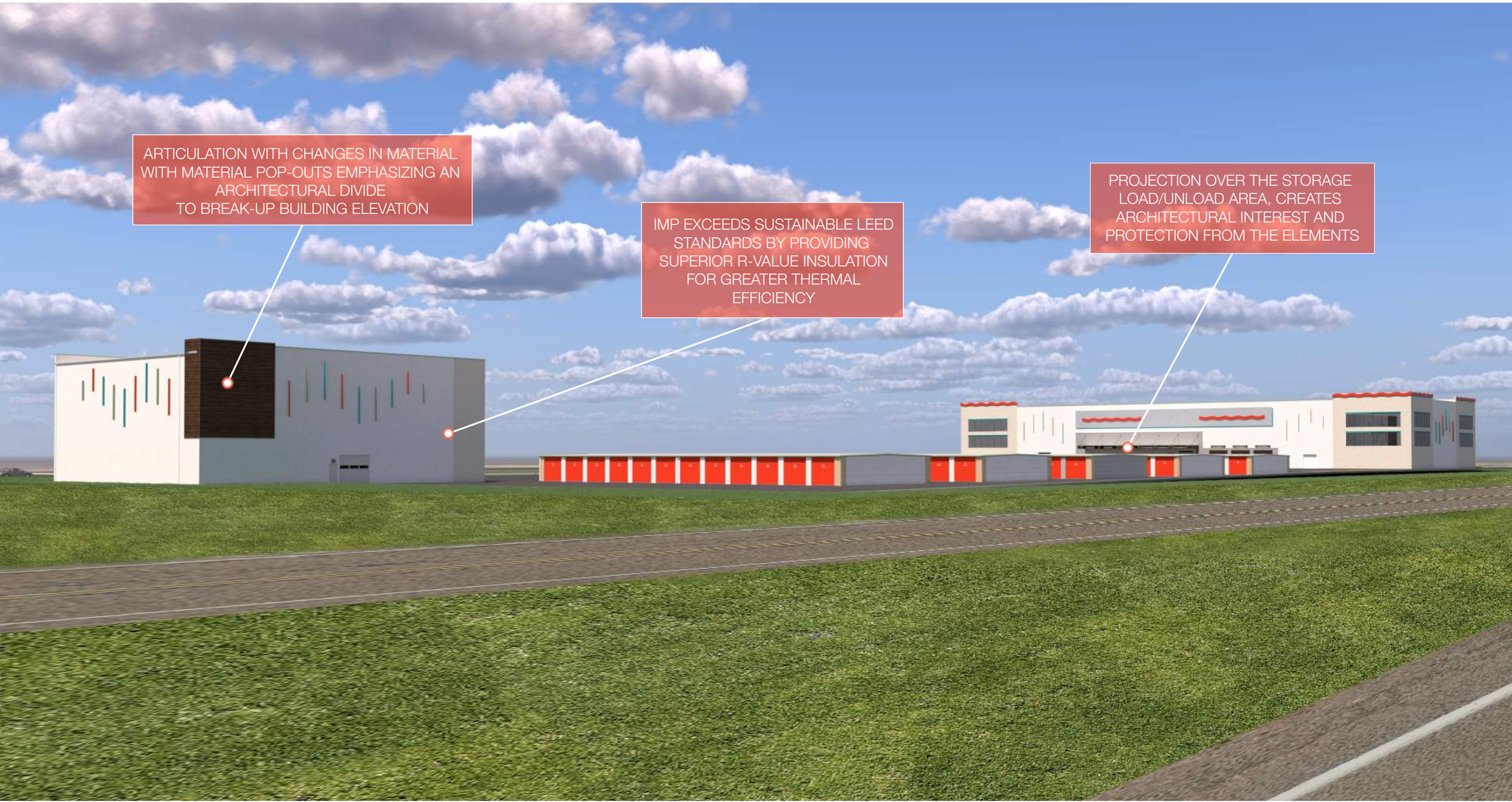
SHEET 02

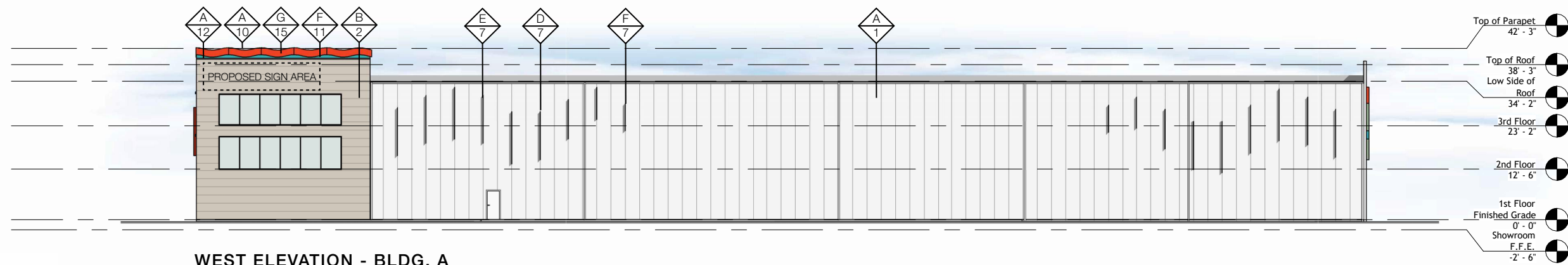
©2024 ALL RIGHTS RESERVED 2024-07-17

ARTICULATION WITH CHANGES IN MATERIAL WITH MATERIAL POP-OUTS EMPHASIZING AN ARCHITECTURAL DIVIDE TO BREAK-UP BUILDING ELEVATION

IMP EXCEEDS SUSTAINABLE LEED STANDARDS BY PROVIDING SUPERIOR R-VALUE INSULATION FOR GREATER THERMAL EFFICIENCY

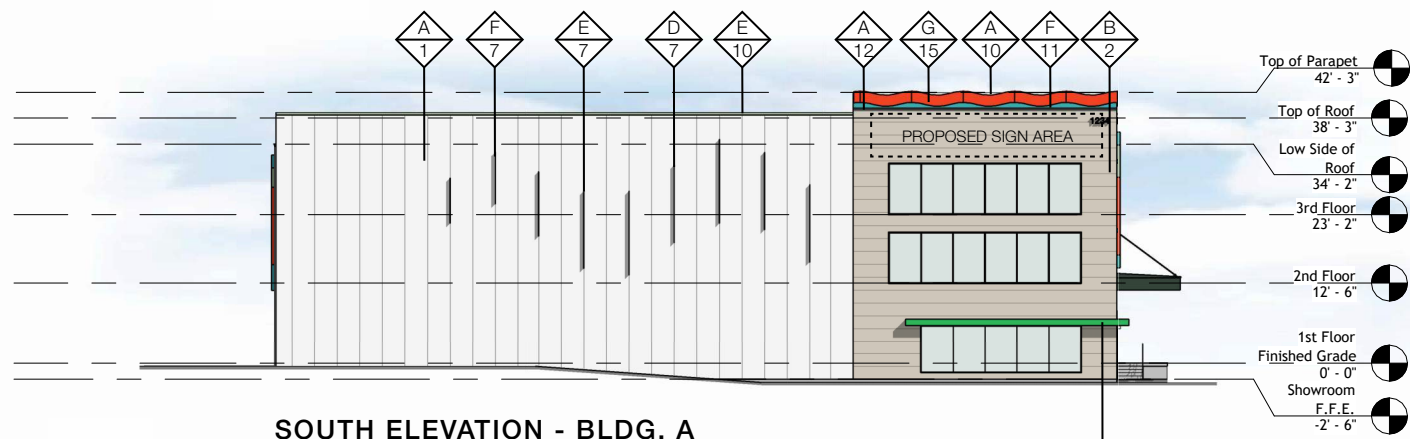
PROJECTION OVER THE STORAGE LOAD/UNLOAD AREA, CREATES ARCHITECTURAL INTEREST AND PROTECTION FROM THE ELEMENTS





WEST ELEVATION - BLDG. A

Scale: 1" = 30'



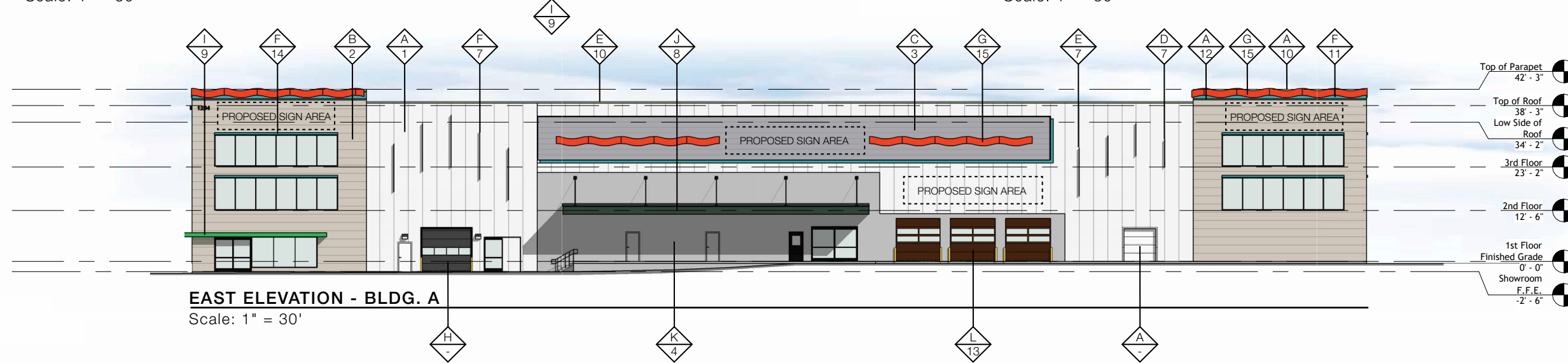
SOUTH ELEVATION - BLDG. A

Scale: 1" = 30'



NORTH ELEVATION - BLDG. A

Scale: 1" = 30'



EAST ELEVATION - BLDG. A

Scale: 1" = 30'

GENERAL NOTES:

D1 - THE PROPOSED IMP USES FULL-WIDTH PANELS. **DO NOT CUT IMP** DUE TO PAINT VARIATIONS. CONTACT THE DESIGNER AT A&M ASSOCIATES TO FIND A SOLUTION. P: 602.623.6841

D2 - THE PROPOSED PROJECT CONSISTS OF **42" WIDE IMP**. DEVIATING FROM THIS SIZE PANEL WILL ALTER THE LYRICAL FIN DESIGN. PLEASE CONTACT THE DESIGNER AT A&M ASSOCIATES SO THE PLAN DRAWINGS CAN BE UPDATED. P: 602.623.6841

COLOR CHART

A	POLAR WHITE (IMP CUSTOM COLOR)	H	SW EGGHELL BLACK
B	SANDSTONE (IMP CUSTOM COLOR)	I	U-HAUL PROMO GREEN
C	GALVANIZED	J	U-HAUL FOREST GREEN
D	SW 6884 OBSTINATE ORANGE	K	LIGHT BROOM FINISHED TILT WALL
E	SW 6451 NURTURE GREEN	L	WALNUT (FAUX WOODGRAIN FINISH)
F	DESERT JEWEL (SW 6767 AQUARIUM)	M	
G	SIERRA SUNSET		

MATERIALS

1	42"W METL-SPAN SANTA FE STUCCO EMBOSSED VERTICAL IMP	9	1'H x 35'W x 2'D CUSTOMER ENTRANCE AWNING
2	24"W METL-SPAN SANTA FE STUCCO EMBOSSED HORIZONTAL IMP	10	4.5"H TRIM TYP.
3	16"W METL-SPAN CONCEPT SERIES CS-620 HORIZONTAL PANELS	11	10.25"H FLAT METAL TRIM TYP.
4	LIGHT BROOM TILT-UP CONCRETE	12	3"H FLAT METAL TRIM TYP.
5	2"W GALVANIZED TRIM ON SIDES OF WALNUT PANELS	13	ULTRA-GRAIN CLASSIC WALNUT CARRIAGE DOORS
6	9"H x 3"D ARCHITECTURAL DETAILS	14	HORIZONTAL WALNUT LAP SIDING
7	9"D LYRICAL ARTICULATED ACCENT FIN (DESIGN ELEMENT)	15	ARCHITECTURAL DETAILS
8	2'H x 75'W x 10'D STORAGE: LOAD/UNLOAD AWNING	16	1'H FASCIA



A&M ASSOCIATES, INC.
 2727 N. CENTRAL AVENUE
 PHOENIX, ARIZONA 85004
 P: 602.263.6841

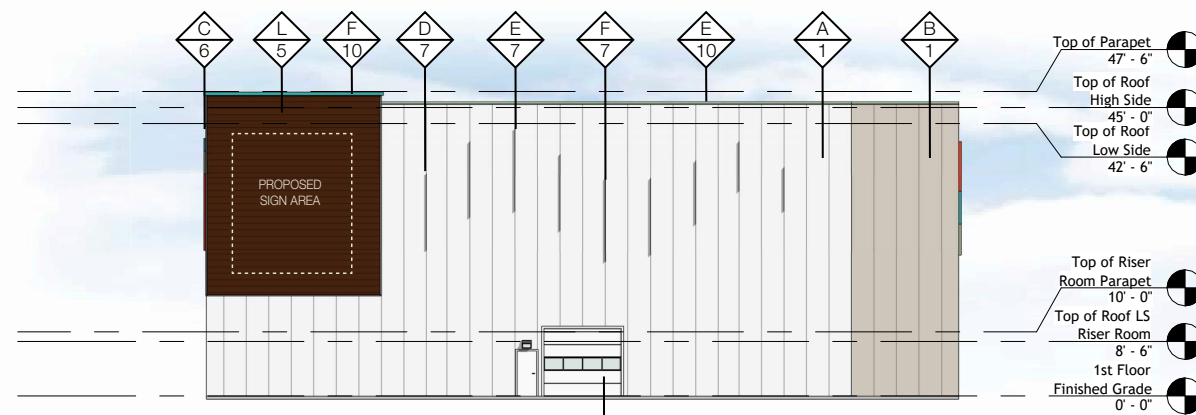


of Ramsey
 Ramsey, MN
 (729074)

Colors & Materials

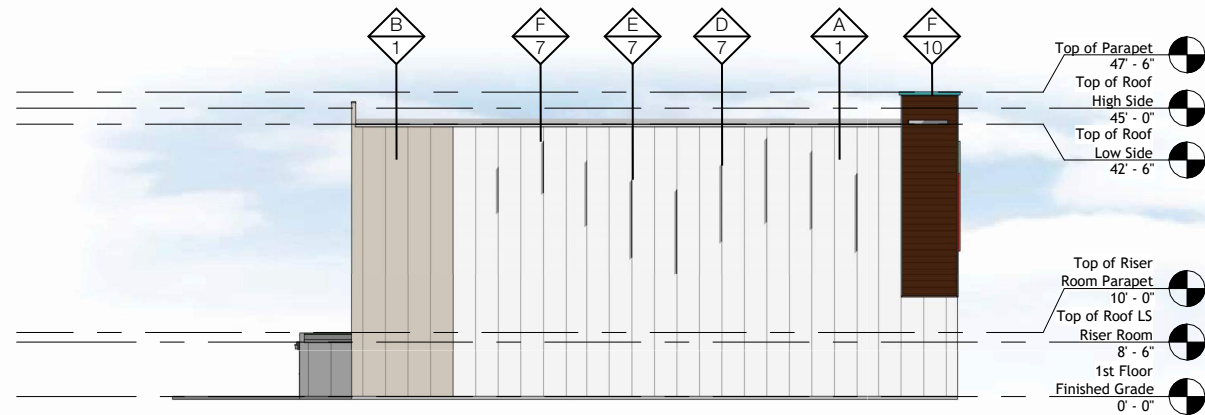
SHEET 04

©2024 ALL RIGHTS RESERVED 2024-07-17



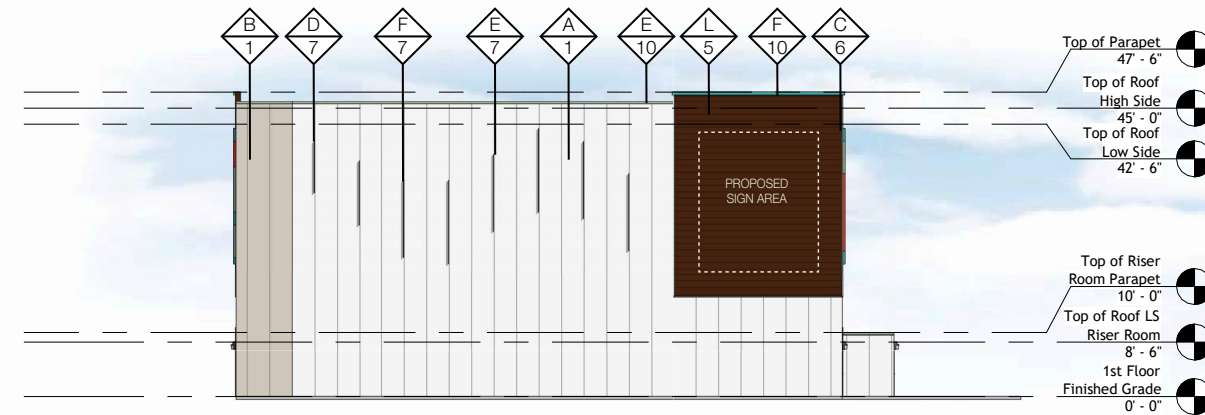
NORTH ELEVATION - BLDG. B

Scale: 1" = 30'



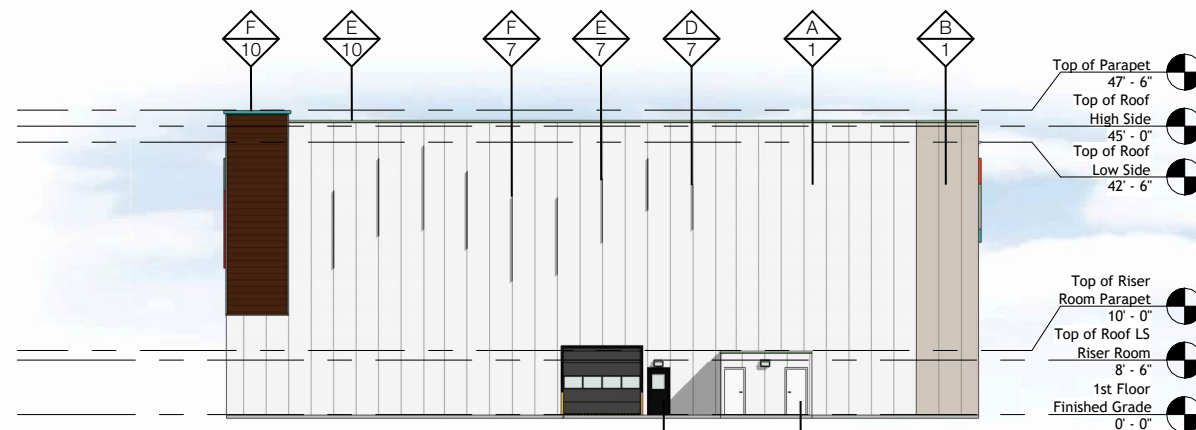
EAST ELEVATION - BLDG. B

Scale: 1" = 30'



WEST ELEVATION - BLDG. B

Scale: 1" = 30'



SOUTH ELEVATION - BLDG. B

Scale: 1" = 30'

MATERIALS	
1	42"W METL-SPAN SANTA FE STUCCO EMBOSSED VERTICAL IMP
2	42"W METL-SPAN SANTA FE STUCCO EMBOSSED HORIZONTAL IMP
3	16"W METL-SPAN CONCEPT SERIES CS-620 HORIZONTAL PANELS
4	LIGHT BROOM TILT-UP CONCRETE
5	HORIZONTAL WALNUT LAP SIDING
6	2"W GALVANIZED TRIM ON SIDES OF WALNUT PANELS
7	9"D LYRICAL ARTICULATED ACCENT FIN (<i>DESIGN ELEMENT</i>)
8	2'H x 75'W x 10'D STORAGE: LOAD/UNLOAD AWNING
9	1'H x 35'W x 2'D CUSTOMER ENTRANCE AWNING
10	4.5"H TRIM TYP.
11	10.25"H FLAT METAL TRIM TYP.
12	3"H FLAT METAL TRIM TYP.
13	ULTRA-GRAIN CLASSIC WALNUT CARRIAGE DOORS
14	9"H x 3"D ARCHITECTURAL DETAILS
15	ARCHITECTURAL DETAILS
16	1'H FASCIA

GENERAL NOTES:

D1 - THE PROPOSED IMP USES FULL-WIDTH PANELS. **DO NOT CUT IMP** DUE TO PAINT VARIATIONS. CONTACT THE DESIGNER AT A&M ASSOCIATES TO FIND A SOLUTION. P: 602.623.6841

D2 - THE PROPOSED PROJECT CONSISTS OF **42" WIDE IMP**. DEVIATING FROM THIS SIZE PANEL WILL ALTER THE LYRICAL FIN DESIGN. PLEASE CONTACT THE DESIGNER AT A&M ASSOCIATES SO THE PLAN DRAWINGS CAN BE UPDATED. P: 602.623.6841

COLOR CHART				
A		POLAR WHITE (<i>IMP CUSTOM COLOR</i>)	H	SW EGGSHELL BLACK
B		SANDSTONE (<i>IMP CUSTOM COLOR</i>)	I	U-HAUL PROMO GREEN
C		GALVANIZED	J	U-HAUL FOREST GREEN
D		SW 6884 OBSTINATE ORANGE	K	LIGHT BROOM FINISHED TILT WALL
E		SW 6451 NURTURE GREEN	L	WALNUT (<i>FAUX WOODGRAIN FINISH</i>)
F		DESERT JEWEL (<i>SW 6767 AQUARIUM</i>)	M	
G		SIERRA SUNSET		



A&M ASSOCIATES, INC.
 2727 N. CENTRAL AVENUE
 PHOENIX, ARIZONA 85004
 P: 602.263.6841

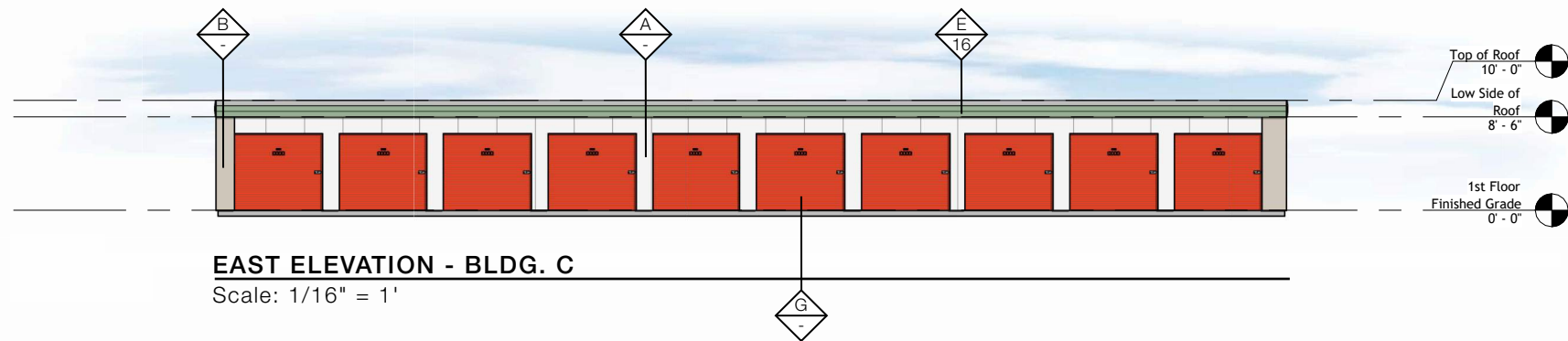
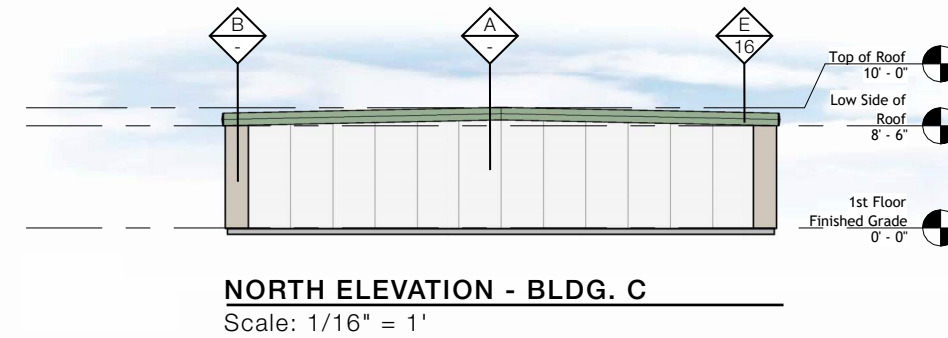
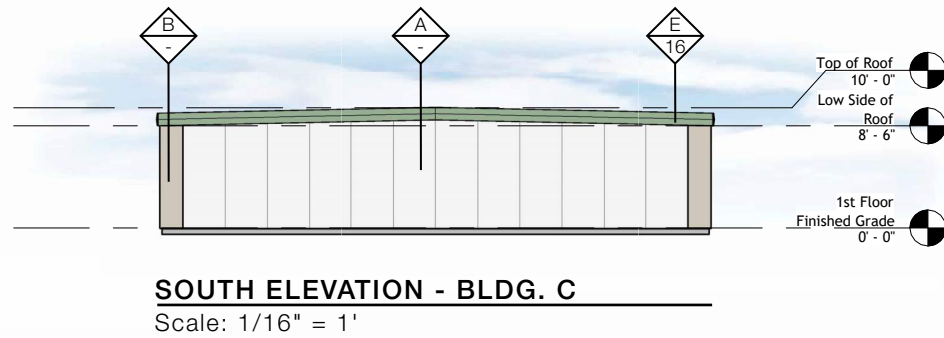
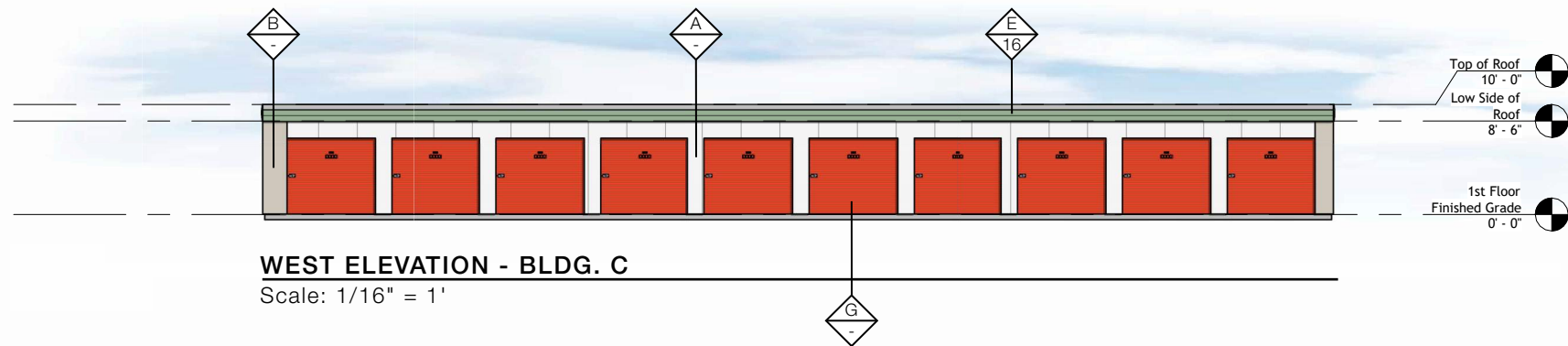


of Ramsey
 Ramsey, MN
 (729074)

Colors & Materials

SHEET 05

©2024 ALL RIGHTS RESERVED 2024-07-17



GENERAL NOTES:

D1 - THE PROPOSED IMP USES FULL-WIDTH PANELS. **DO NOT CUT IMP** DUE TO PAINT VARIATIONS. CONTACT THE DESIGNER AT A&M ASSOCIATES TO FIND A SOLUTION. P: 602.623.6841

D2 - THE PROPOSED PROJECT CONSISTS OF **42" WIDE IMP**. DEVIATING FROM THIS SIZE PANEL WILL ALTER THE LYRICAL FIN DESIGN. PLEASE CONTACT THE DESIGNER AT A&M ASSOCIATES SO THE PLAN DRAWINGS CAN BE UPDATED. P: 602.623.6841

COLOR CHART			
A	POLAR WHITE (IMP CUSTOM COLOR)	H	SW EGGSHELL BLACK
B	SANDSTONE (IMP CUSTOM COLOR)	I	U-HAUL PROMO GREEN
C	GALVANIZED	J	U-HAUL FOREST GREEN
D	SW 6884 OBSTINATE ORANGE	K	LIGHT BROOM FINISHED TILT WALL
E	SW 6451 NURTURE GREEN	L	WALNUT (FAUX WOODGRAIN FINISH)
F	DESERT JEWEL (SW 6767 AQUARIUM)	M	
G	SIERRA SUNSET		

MATERIALS	
1	42"W METL-SPAN SANTA FE STUCCO EMBOSSED VERTICAL IMP
2	42"W METL-SPAN SANTA FE STUCCO EMBOSSED HORIZONTAL IMP
3	16"W METL-SPAN CONCEPT SERIES CS-620 HORIZONTAL PANELS
4	LIGHT BROOM TILT-UP CONCRETE
5	HORIZONTAL WALNUT LAP SIDING
6	2"W GALVANIZED TRIM ON SIDES OF WALNUT PANELS
7	9"D LYRICAL ARTICULATED ACCENT FIN (DESIGN ELEMENT)
8	2'H x 75'W x 10'D STORAGE: LOAD/UNLOAD AWNING
9	1'H x 35'W x 2'D CUSTOMER ENTRANCE AWNING
10	4.5"H TRIM TYP.
11	10.25"H FLAT METAL TRIM TYP.
12	3"H FLAT METAL TRIM TYP.
13	ULTRA-GRAIN CLASSIC WALNUT CARRIAGE DOORS
14	9"H x 3"D ARCHITECTURAL DETAILS
15	ARCHITECTURAL DETAILS
16	1'H FASCIA



A&M ASSOCIATES, INC.
2727 N. CENTRAL AVENUE
PHOENIX, ARIZONA 85004
P: 602.263.6841



of Ramsey
Ramsey, MN
(729074)

Colors & Materials

SHEET 06

©2024 ALL RIGHTS RESERVED 2024-07-17

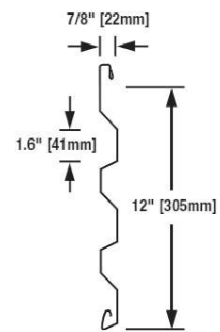
CS-620 Panel (or Equivalent Panel)

CS-260

Concept Series single-skin concealed fastener metal siding panels feature concealed fasteners and a common-lock joint that allows the panels to be integrated with each other. CS-260 interchangeable single-skin metal panels have 12" wide coverage, 7/8" deep profiled panels featuring three asymmetrical ribs.

Systems may vary from an uninsulated screen wall to a lock joint metal wall panel system utilizing BW Systems, which is an insulated composite backup panel system. This wall panel system has two attachment clip options.

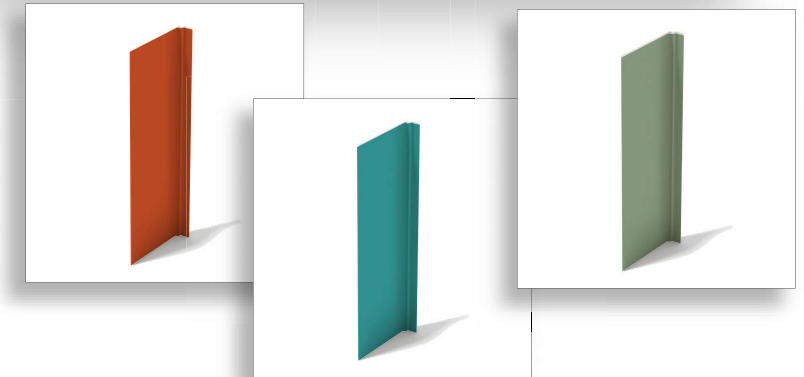
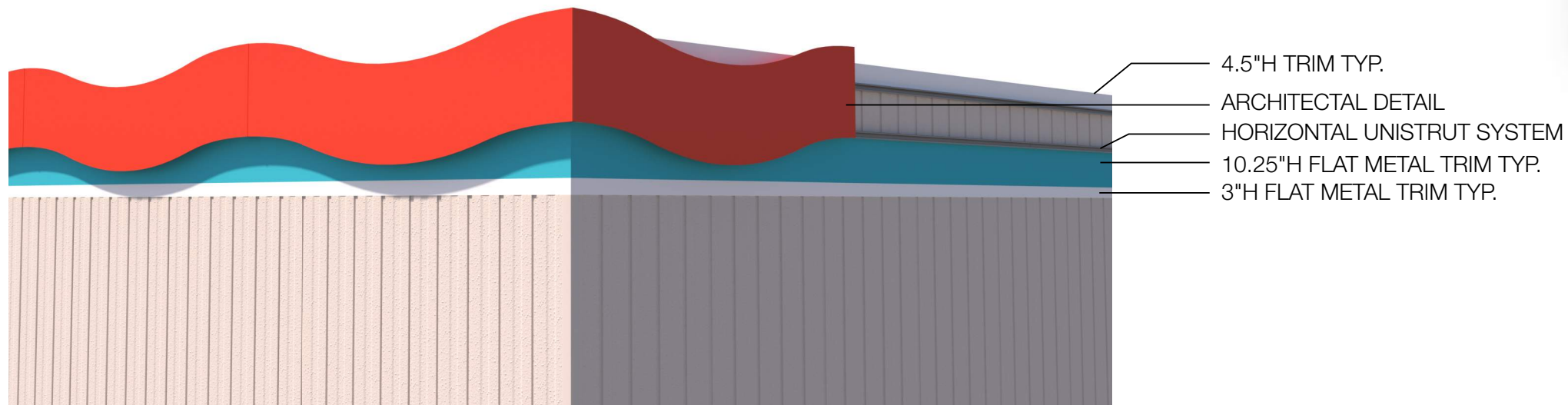
All Concept Series wall panels can be installed in a variety of horizontal or vertical rainscreen applications to form a complete wall system.



9"D Lyrical Articulated Design Element



Parapet Architectural Details



2727 N. CENTRAL AVENUE
PHOENIX, ARIZONA 85004
P: 602.263.6841



of Ramsey
Ramsey, MN
(729074)

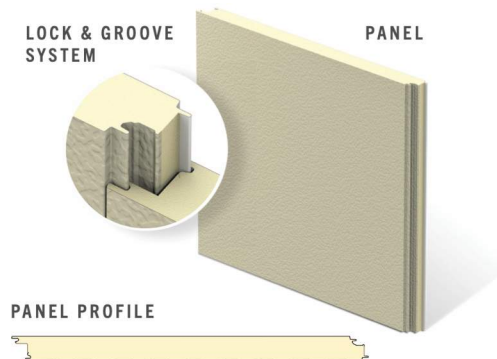
Material Board

SHEET 07

©2024 ALL RIGHTS RESERVED 2024-07-17

Metl-Span Santa Fe (or Equivalent IMP)

The Metl-Span CF Santa Fe panel has a flat exterior profile with a heavy, embossed stucco texture that mimics the look of a masonry stucco finish but with the added value of an insulated metal panel. The profile is flush with the warmth of an old-world finish, providing a visually pleasing building.



PRODUCT SPECIFICATIONS

WIDTH • 24", 30", 36", 42"

THICKNESS • 2", 2½", 2¾", 3", 4"

LENGTH • 8'-0" to 32'-0" Horizontal
8'-0" to 40'-0" Vertical

EXTERIOR PROFILE • Flat profile with heavy embossing resembling desert southwestern appearance

EXTERIOR FACE • G-90 galvanized or AZ-50 aluminum-zinc coated steel in 24 and 22 Ga.

INTERIOR PROFILE • Light Mesa, nominal ¼" deep, embossed or unembossed

INTERIOR FACE • G-90 galvanized or AZ-50 aluminum-zinc coated in 26, 24 and 22 Ga.

CORE • Foamed-in-place, PUR Foam Core, zero ozone depleting (zero ODP) Class 1 foam

JOINT • Offset double tongue-and-groove with extended metal shelf for positive face fastening

REVEAL • Up to 1" reveal options in ¼", ½", ¾" and 1" increments

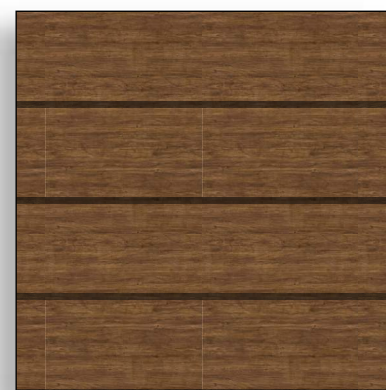
U-FACTORS AND R-VALUES**

U-FACTOR (BTU/h-ft ² ·F)		R-VALUE (h-ft ² ·F/BTU)	
PANEL WIDTH: 42"		PANEL WIDTH: 42"	
35°		35°	
2"	0.059	2"	17.5
2.5"	0.046	2.5"	21.9
3"	0.038	3"	26.2
4"	0.028	4"	35.0

*Available only from Nevada plant
**Based on ASTM C518, ASTM C1363 and thermal modeling



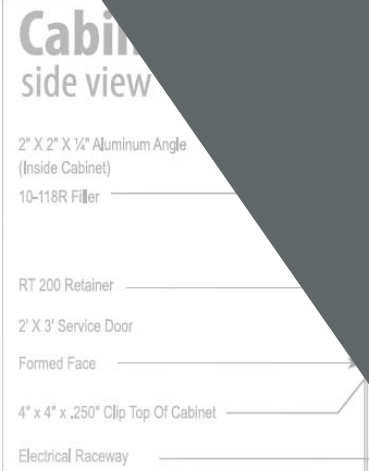
Stucco Embossed IMP
EXAMPLE



Horizontal Lap Siding
ATAS Rumba Shake
Wood grain finish
(or Equivalent)



Light Broom Finished
TILT-UP CONCRETE
EXAMPLE

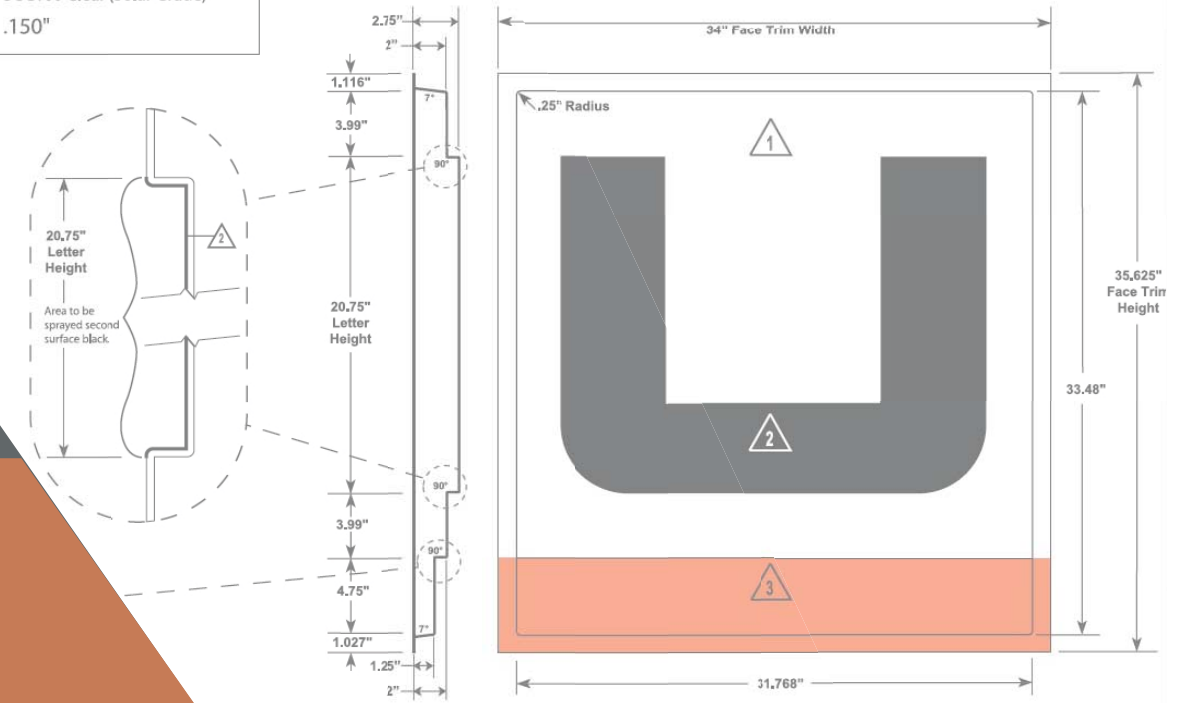


Face Detail n.t.s.

<p>1 "Background"</p> <p>Color: Spray second surface L-403 White Lacryl, by Spraylat.</p> <p>Translucent White</p>	<p>2 "Letter"</p> <p>Color: Spray second surface L-480 Black Lacryl by Spraylat.</p> <p>Black</p>	<p>3 "Orange Bar"</p> <p>Color: Spray second surface L-422 Poppy Orange Lacryl by Spraylat.</p> <p>Translucent Orange</p>
--	---	---

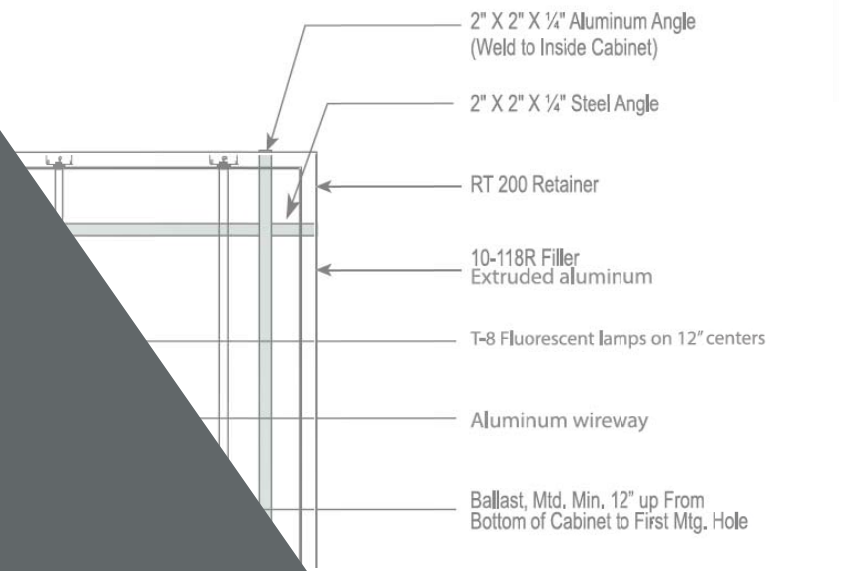
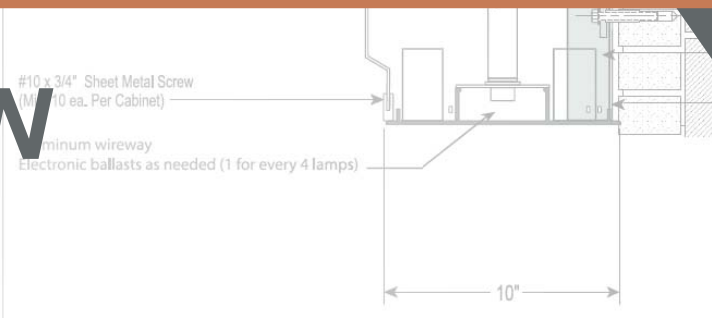
Material(s) Specifications - Sign Face

Material:	G.E. Lexan® SGC100 Clear (Solar Grade)
Typ. Trade:	.150"

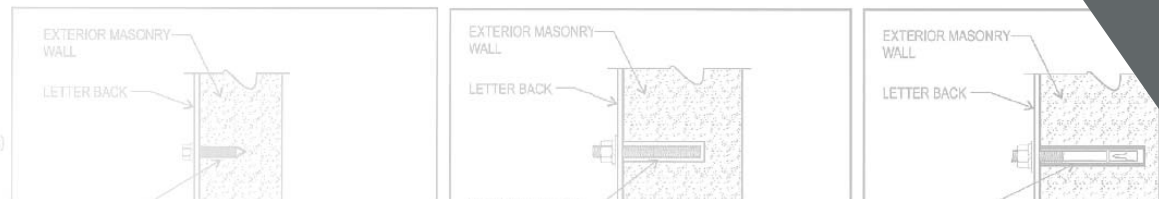


SIGNAGE PROPOSAL

RAMSEY, MN



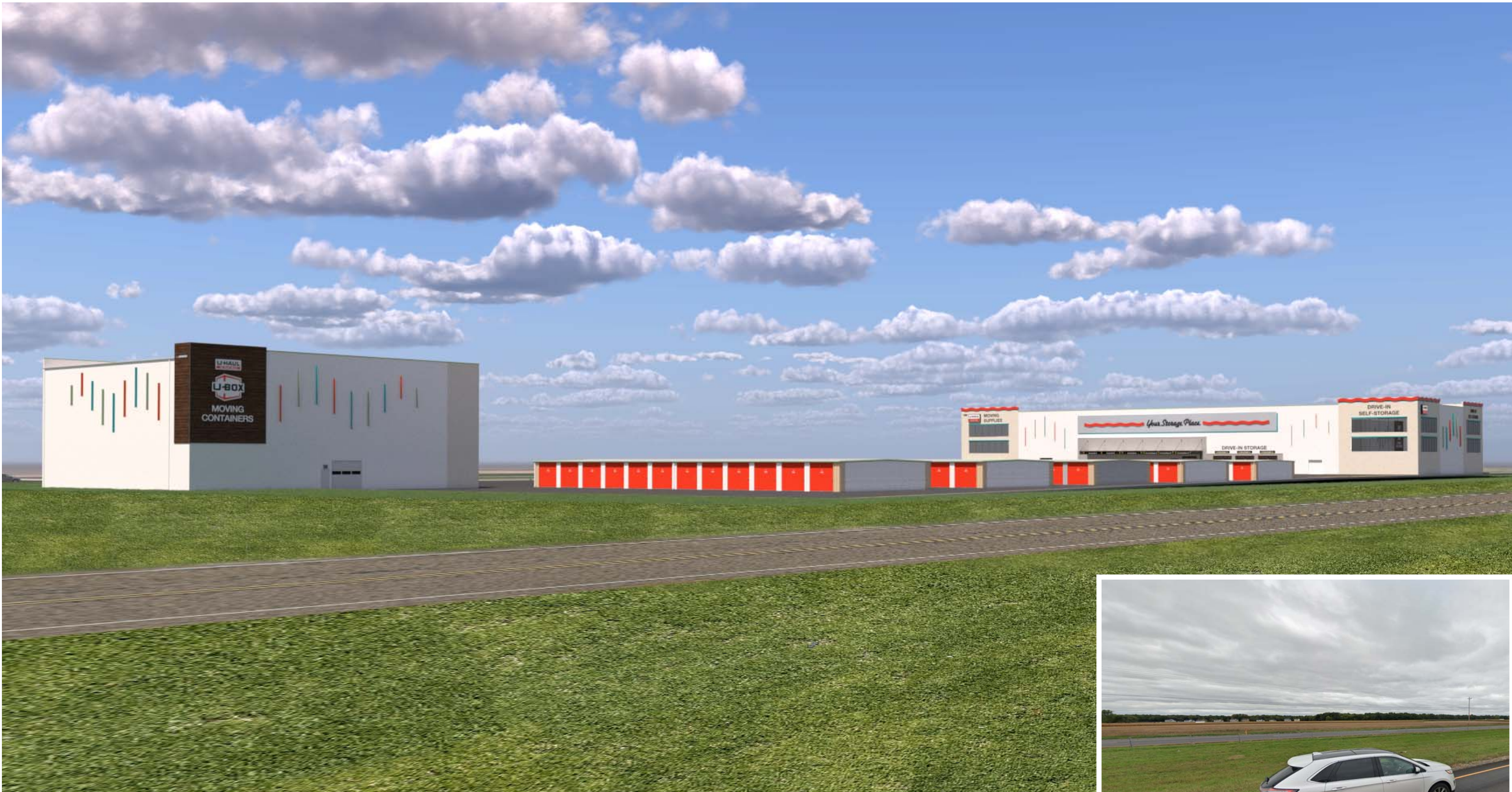
Connection Details n.t.s.



2727 N. CENTRAL AVENUE
PHOENIX, ARIZONA 85004
P: 602.263.6841



Signage Proposal
SHEET 01



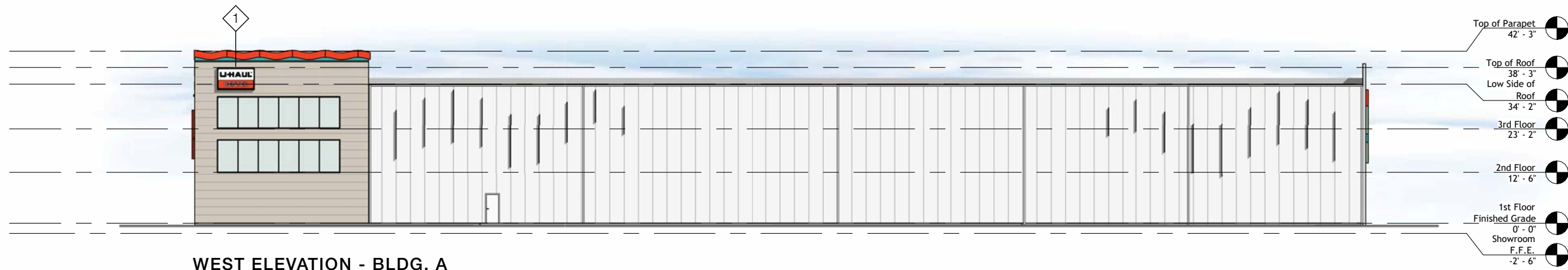
2727 N. CENTRAL AVENUE
PHOENIX, ARIZONA 85004
P: 602.263.6841



Northeast Elevation
Composite Rendering

SHEET 02

©2024 ALL RIGHTS RESERVED 2024-07-17



WEST ELEVATION - BLDG. A
Scale: 1" = 30'



SOUTH ELEVATION - BLDG. A
Scale: 1" = 30'



NORTH ELEVATION - BLDG. A
Scale: 1" = 30'



EAST ELEVATION - BLDG. A
Scale: 1" = 30'

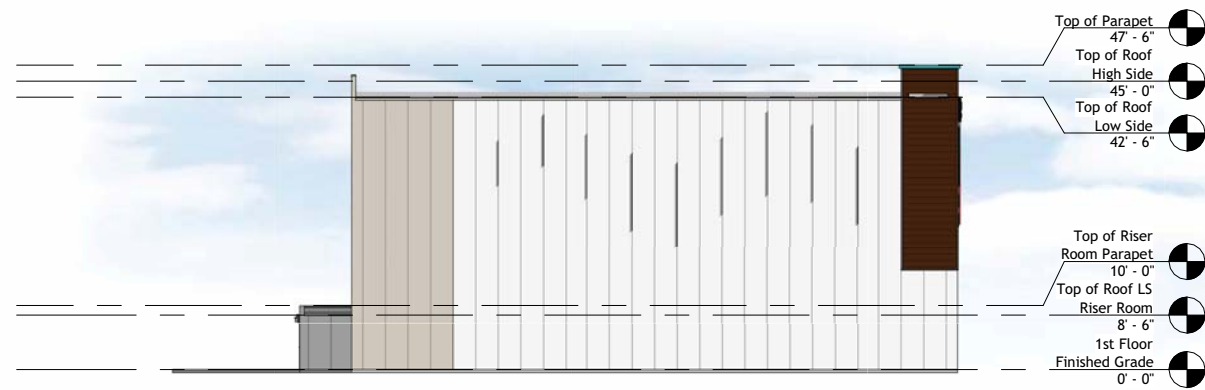
SIGN CALCULATIONS	
1	LIT CABINET SIGN 9'W X 5'H (45 SQFT)
2	DIRECTIONAL DIMENSIONAL LETTERS 12.16'W X 2'H (24.32 SQFT)*
3	DIRECTIONAL DIMENSIONAL LETTERS 21.5'W X 2'H (43 SQFT)*
4	DIRECTIONAL DIMENSIONAL LETTERS 11.11'W X 2'H (22.22 SQFT)*
5	DIRECTIONAL DIMENSIONAL LETTERS 13.61'W X 2'H (27.22 SQFT)*
6	11 GAUGE STEEL BLACK POWDER COAT 34.3'W X 5'H (171.5 SQFT)*
7	DIRECTIONAL DIMENSIONAL LETTERS 26.4'W X 2'H (52.8 SQFT)*

*Lit sign option is available upon request



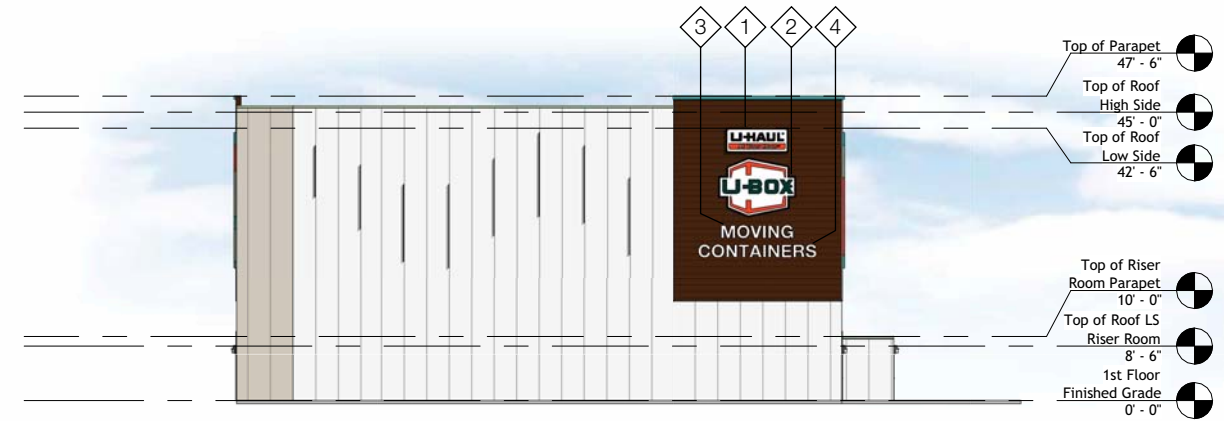
NORTH ELEVATION - BLDG. B

Scale: 1" = 30'



EAST ELEVATION - BLDG. B

Scale: 1" = 30'



WEST ELEVATION - BLDG. B

Scale: 1" = 30'



SOUTH ELEVATION - BLDG. B

Scale: 1" = 30'

SIGN CALCULATIONS

1	LIT CABINET SIGN 9.66'W X 3.8'H (36.71 SQFT)
2	LIT CABINET SIGN 11.95'W X 9.19'H (109.82 SQFT)
3	LIT PAN-FACE/CHANNEL LETTERS (OR) DIMENSIONAL LETTERS 11.23'W X 2'H (22.46 SQFT)
4	LIT PAN-FACE/CHANNEL LETTERS (OR) DIMENSIONAL LETTERS 18.26'W X 2'H (36.52 SQFT)

*Lit sign option is available upon request



A&M ASSOCIATES, INC.
 2727 N. CENTRAL AVENUE
 PHOENIX, ARIZONA 85004
 P: 602.263.6841

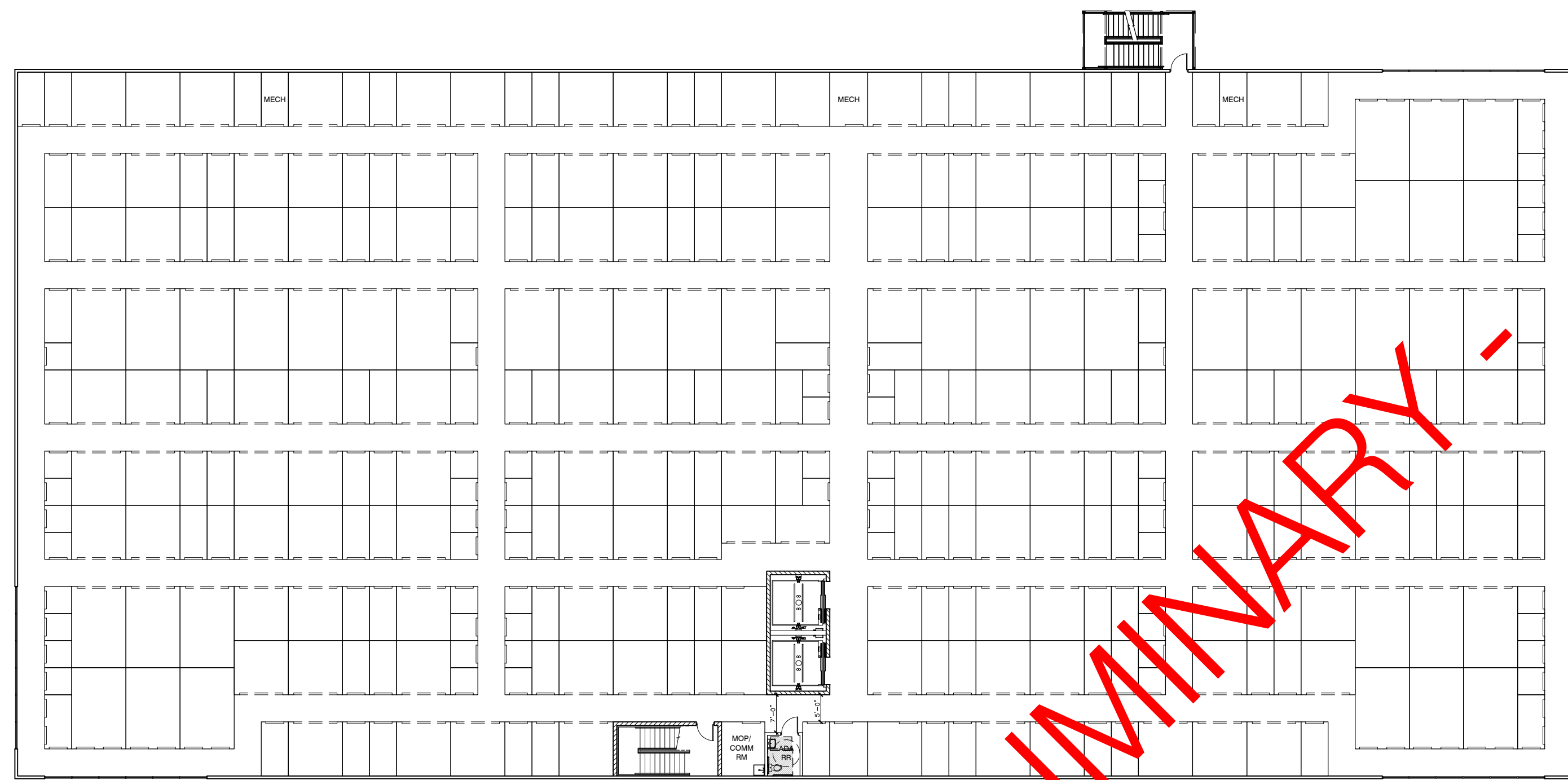


of Ramsey
 Ramsey, MN
 (729074)

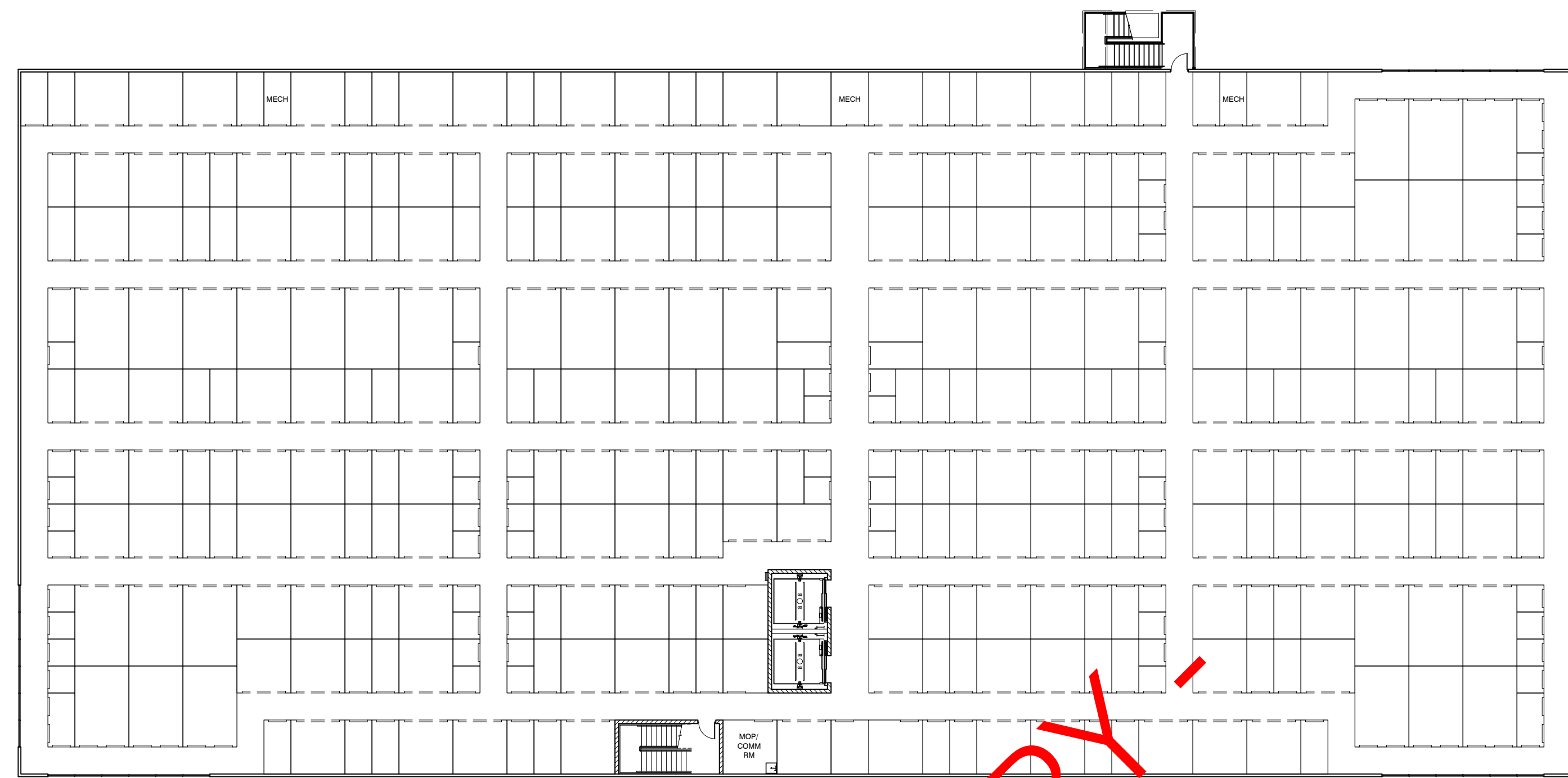
Sign Calculations

SHEET 04

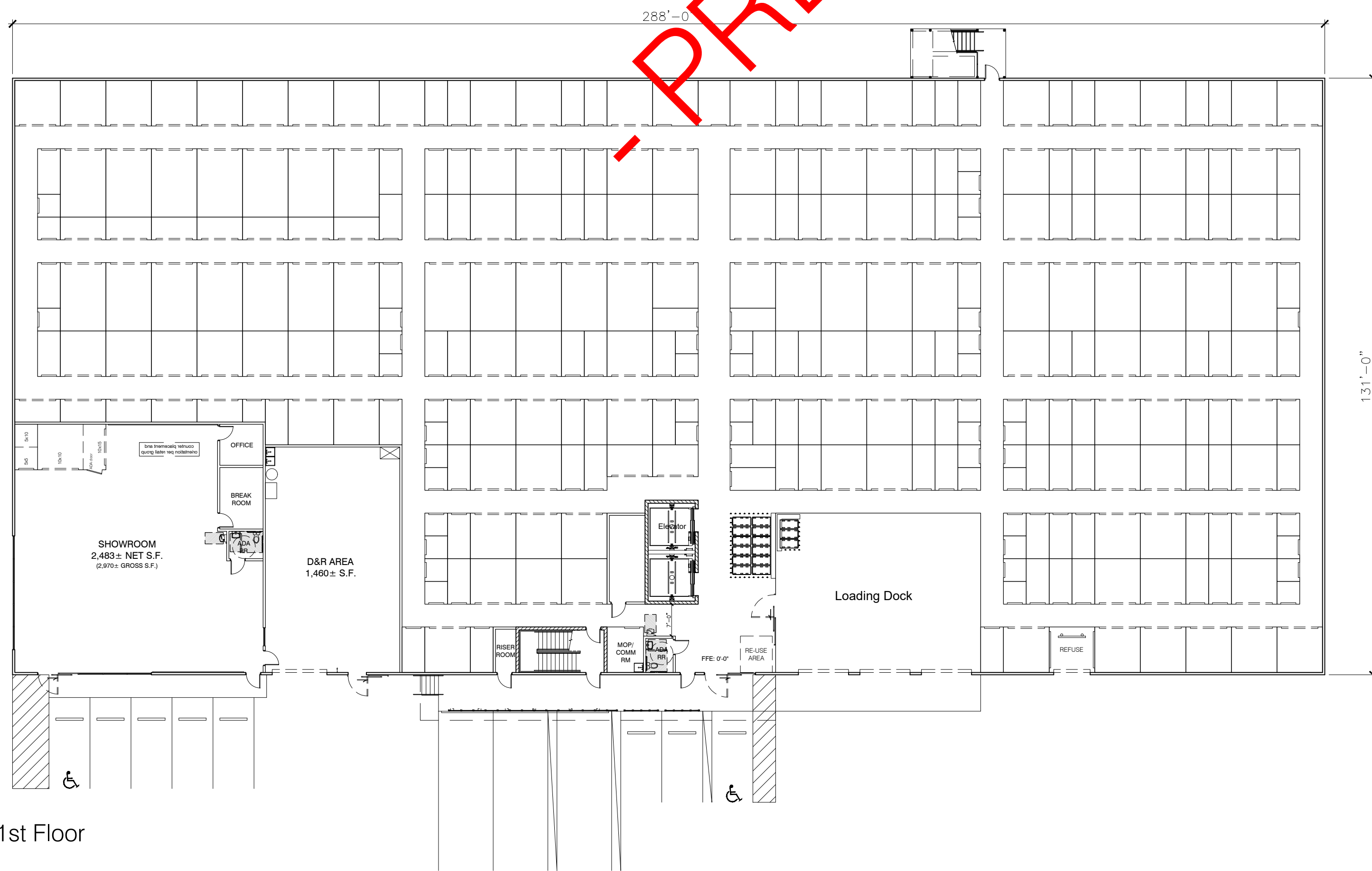
©2024 ALL RIGHTS RESERVED 2024-07-17



2nd Floor



3rd Floor



1st Floor

PRELIMINARY

PRELIMINARY

LOCKER SIZE	PROPOSED MIX																	
	INTERIOR						EXTERIOR MINIS			GRAND TOTAL								
	1st Flr	SQ. FT.	%	2nd Flr	SQ. FT.	%	3rd Flr	SQ. FT.	%	TOTAL	SQ. FT.	%	QTY	SQ. FT.	%	QTY	SQ. FT.	%
5 x 5	47	1,175	5%	58	1,450	5%	58	1,450	5%	163	4,075	5%	0	0	0%	163	4,075	4%
5 x 10	123	6,150	28%	147	7,350	28%	146	7,300	28%	416	20,800	28%	0	0	0%	416	20,800	22%
7 x 10	3	210	1%	3	210	1%	3	210	1%	9	630	1%	0	0	0%	9	630	1%
10 x 8	0	0	0%	2	160	1%	2	160	1%	4	320	0%	0	0	0%	4	320	0%
10 x 10	97	9,700	45%	115	11,500	43%	116	11,600	43%	328	32,800	44%	0	0	0%	328	32,800	34%
10 x 15	29	4,350	20%	40	6,000	22%	40	6,000	22%	109	16,350	22%	0	0	0%	109	16,350	17%
19.5 x 7.67	0	0	0%	0	0	0%	0	0	0%	0	0	0%	60	8,974	43%	60	8,974	9%
26 x 7.67	0	0	0%	0	0	0%	0	0	0%	0	0	0%	60	11,965	57%	60	11,965	13%
TOTAL	299	21,585	100%	365	26,670	100%	365	26,720	100%	1,029	74,975	100%	120	20,939	100%	1,149	95,914	100%

U-BOX AREA = 10,807± S.F.
TOTAL U-BOXES = 800 (160 x 5-HIGH)

REVISIONS:

NO.	DATE	INITIALS	NOTES
1	05/16/24	BLC	PLAN REVISIONS, UPDATE MIX
2			
3			
4			
5			
6			
7			
8			

PROFESSIONAL SEAL:

PRELIMINARY DOCUMENTS;
NOT FOR CONSTRUCTION;
FOR INFORMATION ONLY

ARCHITECT LOGO:

AMERCO
REAL ESTATE COMPANY

CONSTRUCTION DEPARTMENT
2727 NORTH CENTRAL AVENUE
PHOENIX, ARIZONA 85004
P: (602) 263-6502

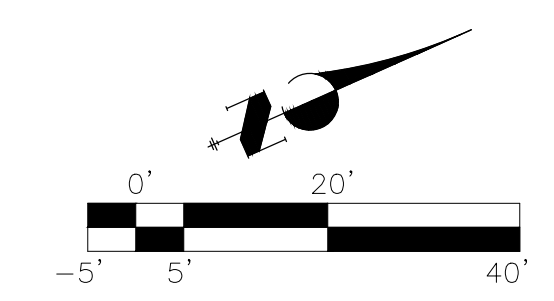
SITE ADDRESS:
U-Haul M&S of Ramsey
Hwy 10 & Riverdale Dr.
Ramsey, MN 55303

SHEET CONTENTS:
Preliminary
Floor Plan

729074

DRAWN: KMB
CHECKED: NH
DATE: 05/07/24

729074A1C.dwg



SCALE: 1" = 20' - 0"

NO.	DATE	INITIALS	NOTES
1	05/16/24	BLC	PLAN REVISIONS
2			
3			
4			
5			
6			
7			
8			

PROFESSIONAL SEAL:

PRELIMINARY DOCUMENTS;
NOT FOR CONSTRUCTION;
FOR INFORMATION ONLY.

ARCHITECT LOGO:

AMERCO
REAL ESTATE COMPANY

CONSTRUCTION DEPARTMENT
2727 NORTH CENTRAL AVENUE
PHOENIX, ARIZONA 85004
P: (602) 263-6502

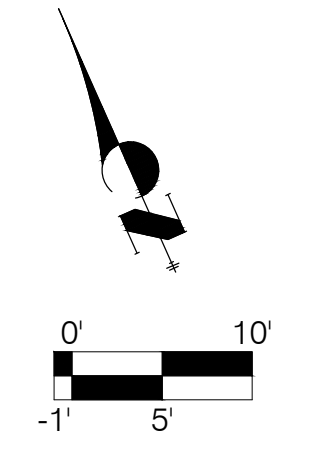
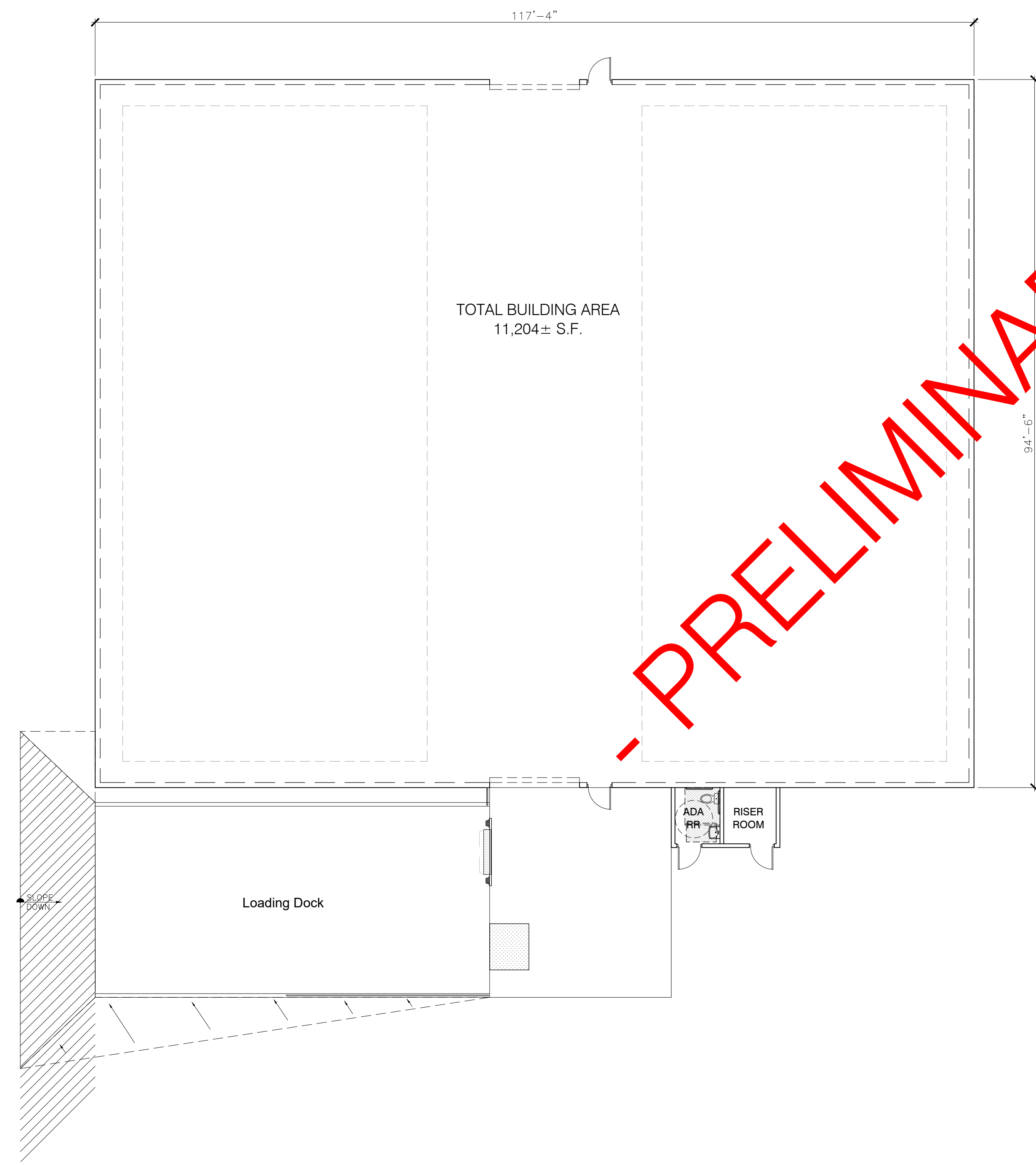
SITE ADDRESS:
U-Haul M&S of Ramsey
Hwy 10 & Riverdale Dr.
Ramsey, MN 55303

SHEET CONTENTS:
Preliminary
Floor Plan

729074

DRAWN:	KMB	A2.1
CHECKED:	NH	
DATE:	05/07/24	

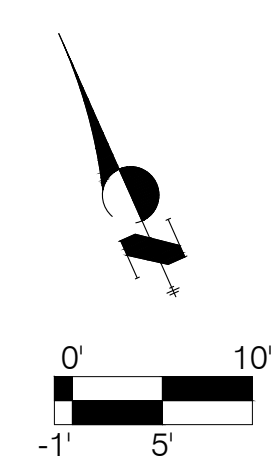
© 2024 AMERCO REAL ESTATE COMPANY 729074A1C.dwg



SCALE: 3/32" = 1' - 0"



PRELIMINARY



NO.	DATE	INITIALS	NOTES
1	05/16/24	BLC	PLAN REVISIONS
2			
3			
4			
5			
6			
7			
8			

PROFESSIONAL SEAL:

*PRELIMINARY DOCUMENTS,
NOT FOR CONSTRUCTION,
FOR INFORMATION ONLY.*

ARCHITECT LOGO:

AMERCO
REAL ESTATE COMPANY

CONSTRUCTION DEPARTMENT
2727 NORTH CENTRAL AVENUE
PHOENIX, ARIZONA 85004
P: (602) 263-6502

SITE ADDRESS:
U-Haul M&S of Ramsey
Hwy 10 & Riverdale Dr.
Ramsey, MN 55303

SHEET CONTENTS:
Preliminary
Floor Plan

729074

DRAWN: KMB
CHECKED: NH
DATE: 05/07/24

A2.3

GENERAL NOTES

GENERAL DESIGN: CANOPY DESIGN TO BE HIP STRUCTURE. SHOP DRAWINGS MUST BE APPROVED BY U-HAUL CONSTRUCTION DEPARTMENT PRIOR TO ORDER/MANUFACTURE.

DESIGN LOADS:
DESIGN TO MEET OR EXCEED THE REQUIREMENTS OF THE 2006 IBC, AND/OR LOCAL GOVERNING CODE. REFER TO SHOP DRAWINGS FOR PROJECT SPECIFIC DESIGN/ENGINEERING AND GEOGRAPHICAL CONDITIONS FOR LIVE LOADS.

NOTES:
DESIGN STRUCTURE TO 5 PSF SNOW LOAD. FABRIC TOP TO BE REMOVED IF SNOW ACCUMULATION IS ANTICIPATED.
FABRIC TOP TO BE REMOVED IF WINDS EXCEEDING 90 MPH ARE ANTICIPATED.

STRUCTURAL STEEL SHALL CONFORM TO AISC SPECIFICATIONS AND CODE OF STANDARD PRACTICES.

STEEL MATERIAL SCHEDULE:

ITEMS	SPECIFICATIONS
HSS TUBE STEEL	ASTM A500, GRADE B.
ROUND HSS OR STEEL PIPE	ASTM A500, GRADE B OR ASTM A53, GRADE B.
ROUND STEEL TUBING	ASTM A500
GUSSET PLATES	ASTM A36
HEX BOLTS	ASTM A325
NUTS	ASTM A563
WASHERS	ASTM F436
REINFORCING STEEL	ASTM A615, GRADE 60 (GALVANIZED)
ANCHOR RODS	ASTM F1554 GRADE 55 (GALVANIZED)
WELDING ELECTRODES	E70XX

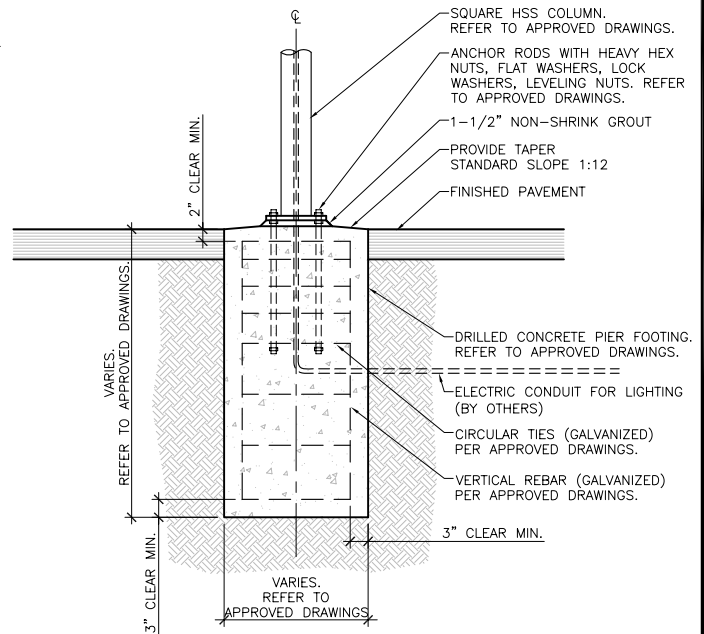
ALL WELDING SHALL CONFORM TO AWS D1.1

FABRIC: **USE "KNITTEX® COLOURSHADE"** OR FABRIC IN LIKE AND KIND PER LOCAL CANOPY MANUFACTURER. APPROVED COLORS ARE "RAINFOREST" AND "ROYAL BLUE" ("KNITTEX" COLORS). COLOR MUST BE APPROVED BY U-HAUL CONSTRUCTION DEPARTMENT BASED ON FACILITY LOCATION. FABRIC TO BE U.V. STABILIZED HIGH DENSITY POLYETHYLENE, WITH MONOFILAMENT YARN AND TAPE CONSTRUCTION AND LOCK-STITCH KNITTED TO ENSURE MATERIAL WILL NOT TEAR, FRAY OR UNRAVEL IF CUT.

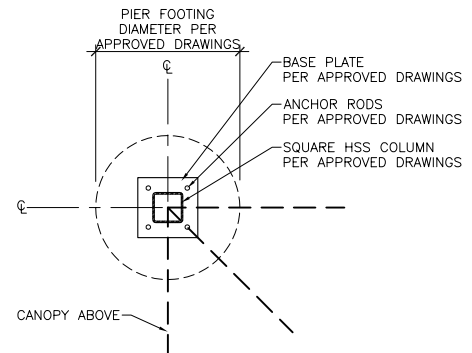
STEEL CABLE: CABLE TO BE 3/8"Ø, 7X19 STRAND CORE GALVANIZED WIRE ROPE WITH A BREAKING STRENGTH VALUE OF 14,000 LBS. GALVANIZED STEEL CABLE CLAMPS. CABLES SHALL BE FED THROUGH THE FABRIC SLEEVES AROUND THE PERIMETER OF THE CANOPY AND TENSIONED UNTIL THE FABRIC PANEL (DESIGNED PURPOSELY UNDERSIZED) REACHES A TAUNT APPEARANCE.

NON-CANTILEVERED FREESTANDING CANOPY

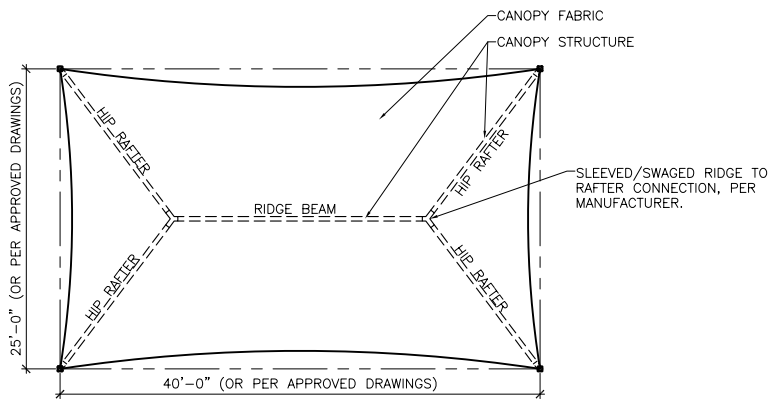
A NON-CANTILEVERED CANOPY IS TYPICALLY USED AT D&R AREAS, OR WHERE ROOF RUN-OFF DOES NOT REQUIRE REDIRECTION.



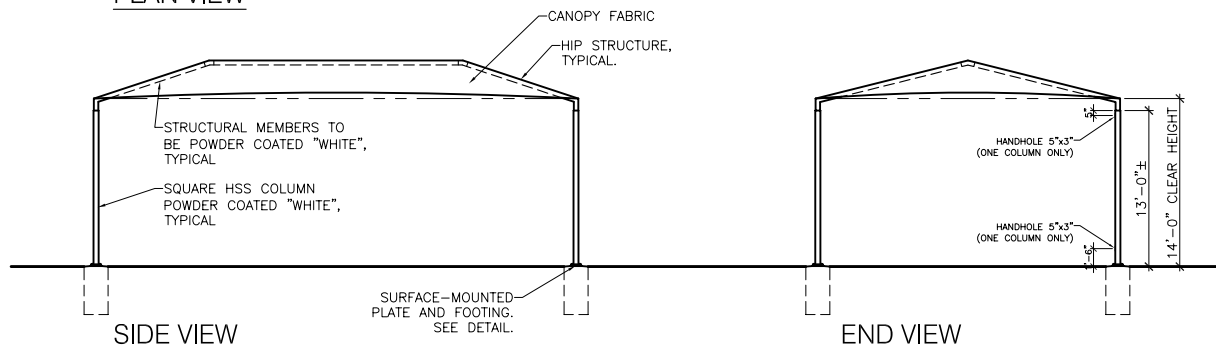
FOOTING DETAIL - SECTION



FOOTING DETAIL - PLAN VIEW



PLAN VIEW



SIDE VIEW

END VIEW

AMERCO.
REAL ESTATE COMPANY

FREESTANDING CANOPY

FILE NAME: Freestanding Canopy.dwg

SECTION #: -

REVISED: 01/08/10

SCALE: N.T.S.

SHEET:

-

DETAIL

© 2010 AMERCO REAL ESTATE COMPANY