

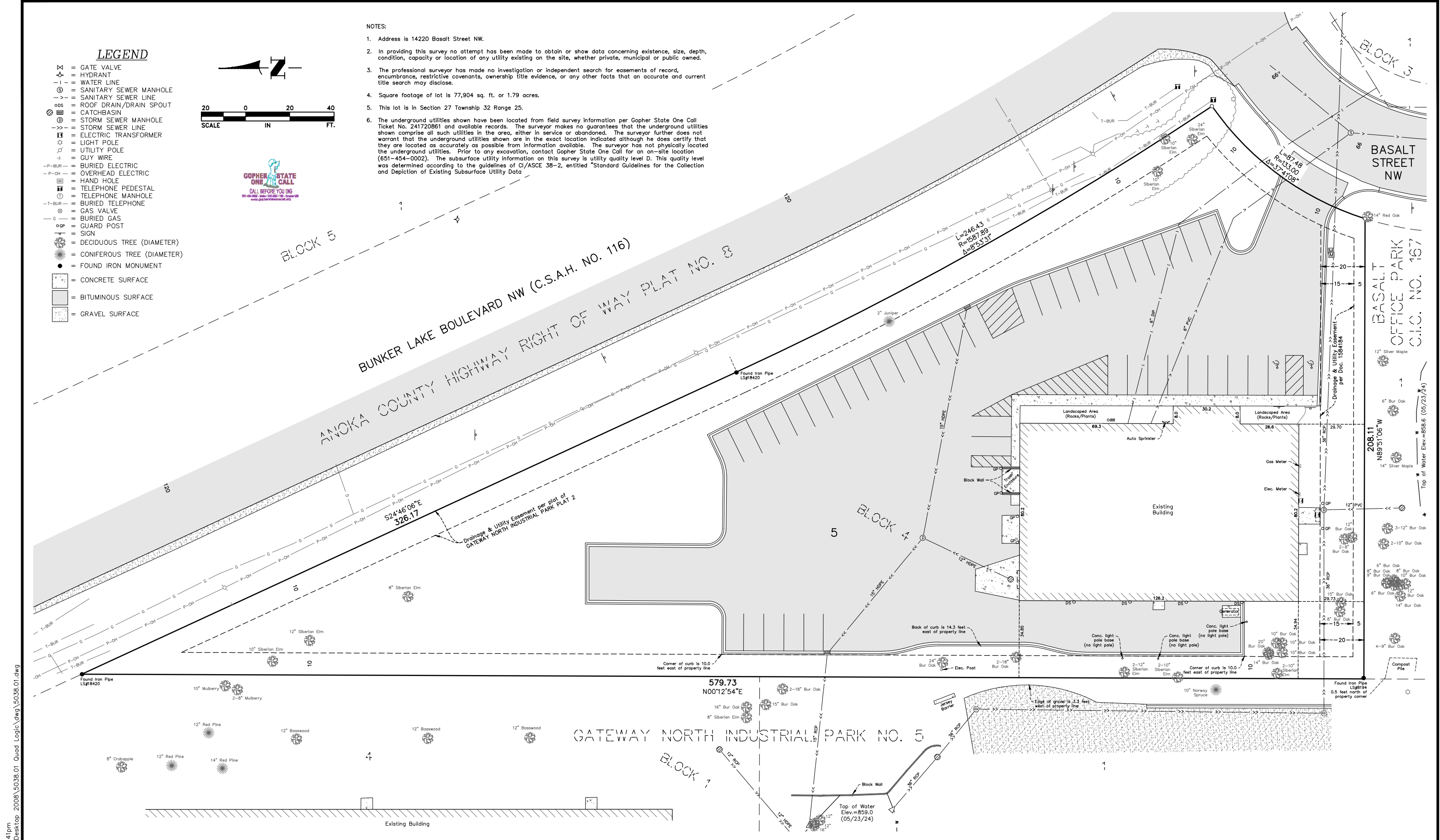
**LEGEND**

- = GATE VALVE
- = HYDRANT
- = WATER LINE
- = SANITARY SEWER MANHOLE
- = SANITARY SEWER LINE
- = ROOF DRAIN/RAIN SPOUT
- = CATCHBASIN
- = STORM SEWER MANHOLE
- = STORM SEWER LINE
- = ELECTRIC TRANSFORMER
- = LIGHT POLE
- = UTILITY POLE
- = GUY WIRE
- = BURIED ELECTRIC
- = OVERHEAD ELECTRIC
- = HAND HOLE
- = TELEPHONE PEDESTAL
- = TELEPHONE MANHOLE
- = BURIED TELEPHONE
- = GAS VALVE
- = BURIED GAS
- = GUARD POST
- = SIGN
- = DECIDUOUS TREE (DIAMETER)
- = CONIFEROUS TREE (DIAMETER)
- = FOUND IRON MONUMENT
- = CONCRETE SURFACE
- = BITUMINOUS SURFACE
- = GRAVEL SURFACE



**NOTES:**

1. Address is 14220 Basalt Street NW.
2. In providing this survey no attempt has been made to obtain or show data concerning existence, size, depth, condition, capacity or location of any utility existing on the site, whether private, municipal or public owned.
3. The professional surveyor has made no investigation or independent search for easements of record, encumbrances, restrictive covenants, ownership title evidence, or any other facts that an accurate and current title search may disclose.
4. Square footage of lot is 77,904 sq. ft. or 1.79 acres.
5. This lot is in Section 27 Township 32 Range 25.
6. The underground utilities shown have been located from field survey information per Gopher State One Call Ticket No. 241720861 and available records. The surveyor makes no guarantees that the underground utilities shown comprise all such utilities in the area, either in service or abandoned. The surveyor further does not warrant that the underground utilities shown are in the exact location indicated although he does certify that they are located as accurately as possible from information available. The surveyor has not physically located the underground utilities. Prior to any excavation, contact Gopher State One Call for an on-site location (651-454-0002). The subsurface utility information on this survey is utility quality level D. This quality level was determined according to the guidelines of CI/ASCE 38-2, entitled "Standard Guidelines for the Collection and Depiction of Existing Subsurface Utility Data"



Jul 12, 2024 1:41pm K:\lead\_sur\land Desktop 2008\5038.01 Quad Logic.dwg\5038.01.dwg

DATE	REVISION

I hereby certify that this survey, plan or report was prepared by me or under my direct supervision and that I am a duly Licensed Professional Land Surveyor under the laws of the State of Minnesota.

*Brian Person*  
 BRIAN PERSON  
 Date 7/12/24 Lic. No. 49138

DESIGNED BY: BP  
 DRAWN BY: MSS  
 CHECKED BY: BP



**Hakanson Anderson**  
 Civil Engineers and Land Surveyors  
 3601 Thurston Ave., Anoka, Minnesota 55303  
 763-427-5860 FAX 763-427-0520  
 www.hakanson-anderson.com

**LOT 5, BLOCK 4,  
 GATEWAY NORTH INDUSTRIAL PARK PLAT 2  
 ANOKA COUNTY, MINNESOTA**

**CERTIFICATE OF SURVEY  
 QUAD LOGIC ADDITION  
 CITY OF RAMSEY, MINNESOTA**

SHEET 4 OF 7 SHEETS