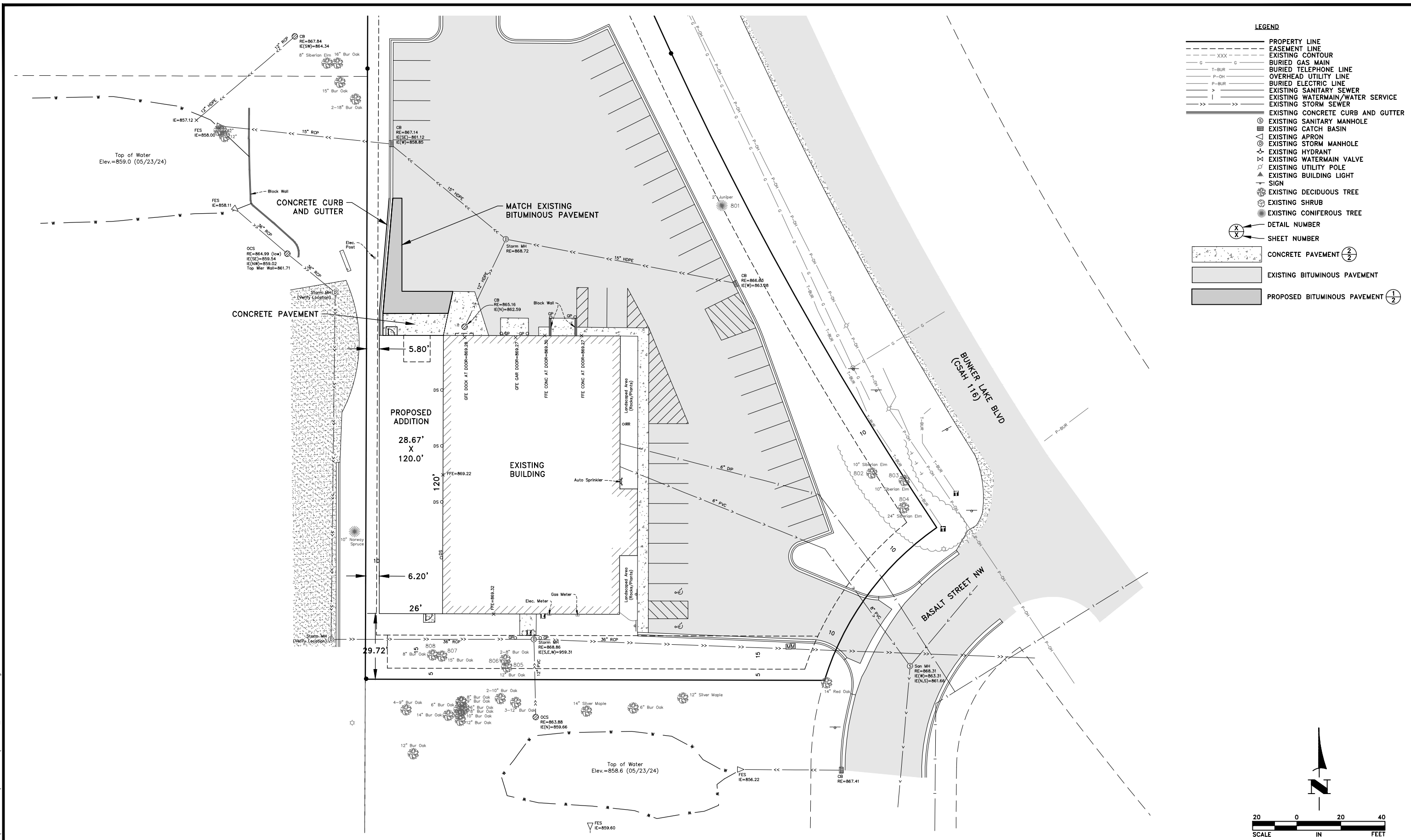
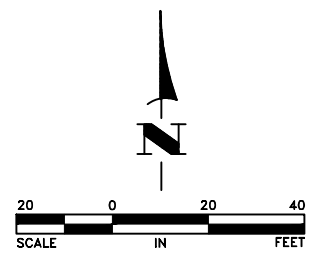


Aug 13, 2024 - 12:43pm K:\PRIVATE\5038.01\ENGINEERING\PLAN DWG\5038.01_SITE_PLAN.gwg



- LEGEND**
- PROPERTY LINE
 - - - EASEMENT LINE
 - - - XXX - - - EXISTING CONTOUR
 - G --- G BURIED GAS MAIN
 - T-BUR BURIED TELEPHONE LINE
 - P-OH OVERHEAD UTILITY LINE
 - P-BUR BURIED ELECTRIC LINE
 - > --- > EXISTING SANITARY SEWER
 - | --- | EXISTING WATERMAIN/WATER SERVICE
 - >> --- >> EXISTING STORM SEWER
 - EXISTING CONCRETE CURB AND GUTTER
 - ⊙ EXISTING SANITARY MANHOLE
 - ⊠ EXISTING CATCH BASIN
 - ⊕ EXISTING APRON
 - ⊙ EXISTING STORM MANHOLE
 - ⊕ EXISTING HYDRANT
 - ⊕ EXISTING WATERMAIN VALVE
 - ⊕ EXISTING UTILITY POLE
 - ⊕ EXISTING BUILDING LIGHT SIGN
 - ⊕ EXISTING DECIDUOUS TREE
 - ⊕ EXISTING SHRUB
 - ⊕ EXISTING CONIFEROUS TREE
 - ⊕ DETAIL NUMBER
 - ⊕ SHEET NUMBER
 - CONCRETE PAVEMENT 2/2
 - EXISTING BITUMINOUS PAVEMENT
 - PROPOSED BITUMINOUS PAVEMENT 1/2



DATE	REVISION
8/13/24	REVISE DOOR LOCATION

I hereby certify that this plan, specification, or report was prepared by me or under my direct supervision and that I am a duly Licensed Professional Engineer under the laws of the State of Minnesota.

Shane Nelson
SHANE NELSON, P.E.
 Date 7/12/24 Lic. No. 43381

DESIGNED BY: SN
 DRAWN BY: AW
 CHECKED BY: SN



Hakanson Anderson
 Civil Engineers and Land Surveyors
 3601 Thurston Ave., Anoka, Minnesota 55303
 763-427-5860 FAX 763-427-0520
 www.hakanson-anderson.com

**LOT 5, BLOCK 4,
 GATEWAY NORTH INDUSTRIAL PARK PLAT 2
 ANOKA COUNTY, MINNESOTA**

CIVIL SITE PLAN
**QUAD LOGIC ADDITION
 CITY OF RAMSEY, MINNESOTA**

SHEET 6 OF 7 SHEETS
 5038.01