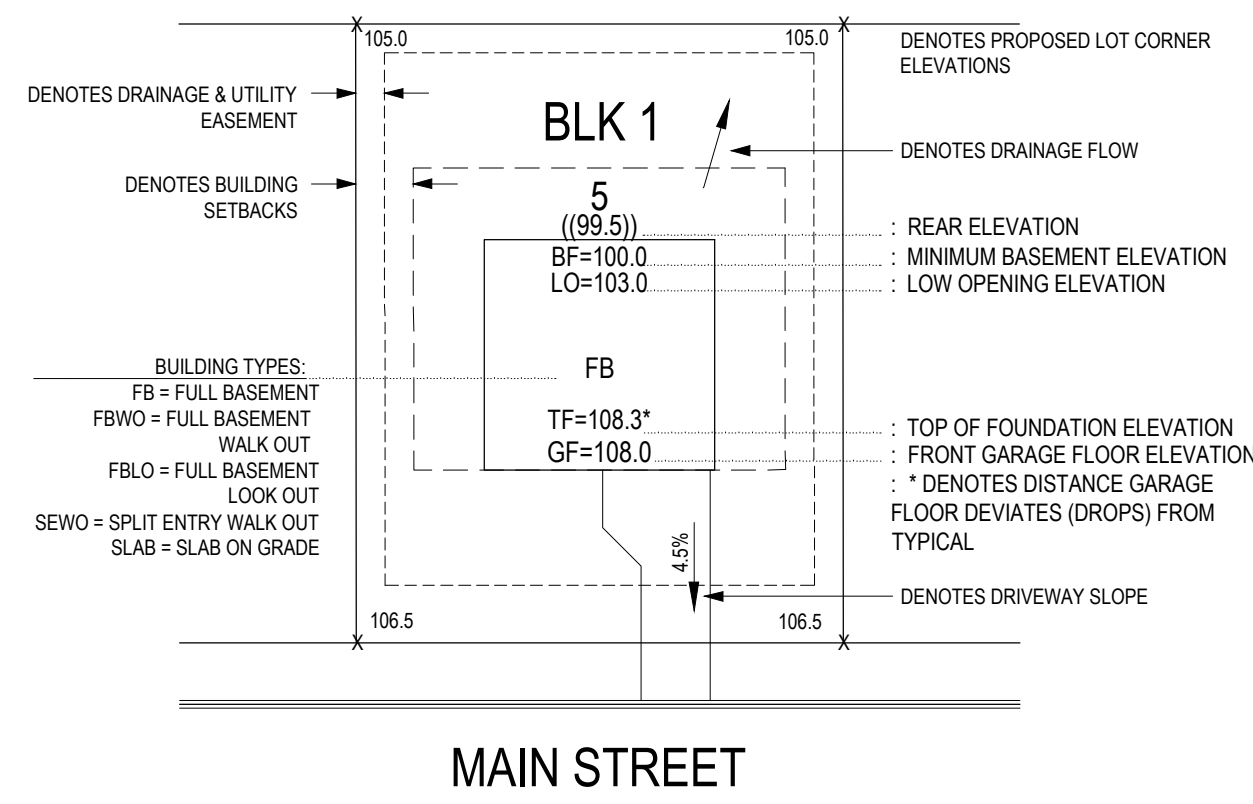


DATA TABLE

Parcel	Bldg. Type	Garage Floor	Low Opening	Low Floor	HWL	EOF
Block1, Lot1	Look Out	915.0	910.0	907.0	907.2	907.0
Block1, Lot2	Look Out	912.0	909.0	906.0	904.0	903.7
Block1, Lot3	Look Out	910.0	906.0	903.0	900.2	900.0
Block1, Lot4	Walk Out	914.0	906.0	906.0	900.4	900.2
Block1, Lot5	Walk Out	914.0	906.0	906.0	900.3	900.2
Block1, Lot6	Full Basement	911.5	911.5	903.5	907.6	907.2
Block1, Lot7	Full Basement	915.0	915.0	907.0	904.8	904.7
Block1, Lot8	Full Basement	915.0	915.0	907.0	907.0	906.7
Block1, Lot9	Walk Out	912.0	904.0	904.0	899.4	899.0
Block1, Lot10	Look Out	907.5	903.5	900.5	900.7	900.2
Block1, Lot11	Look Out	908.5	903.5	900.5	900.0	899.7
Block1, Lot12	Look Out	907.5	903.5	900.5	899.5	899.3
Block1, Lot13	Full Basement	904.0	904.0	896.0	900.1	900.0



NOTES:
1. GARAGE LOCATION INDICATED BY DRIVEWAY.

1 TYPICAL LOT DETAIL NO SCALE

GENERAL NOTES

1. For construction staking and surveying services contact Landform at 612.252.9070.

AREA CALCULATION

Area of Disturbance = XX SF = XX Acres

LEGEND

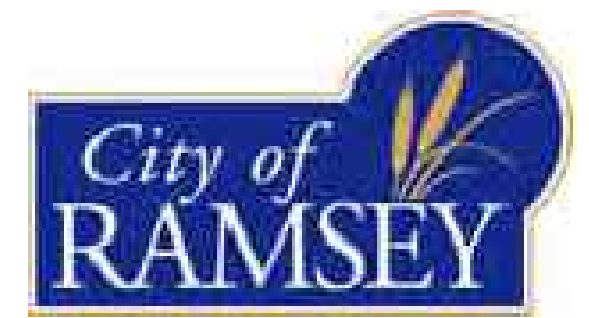
SYMBOL	DESCRIPTION	ESTIMATED QUANTITY
	Inlet Protection	X ea.
	Silt Fence	8990 ft.
	Septic Field Protection Fence	X ft.
	Compost or Bio Log	X ft.
	Vehicle Tracking Pad	X ea.
	Erosion Control Blanket	X ea.
	Tip Out Curb	
	Pavement Sawcut	
	Construction Limits	
	Top of Wall	
	Bottom of Wall	

OWNER

ALAN & JONI GREENWALDT

4741 153RD AVENUE NW
RAMSEY, MN 55303
612-202-9421

CITY



PROJECT

EMERALD ESTATES
RAMSEY, MINNESOTA

ISSUE / REVISION HISTORY

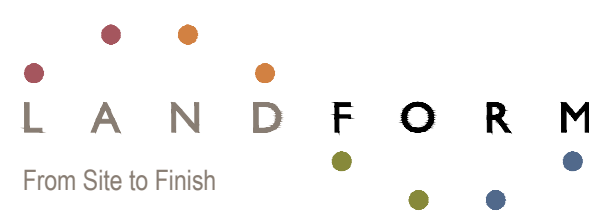
DATE	ISSUE / REVISION	REVIEW
16 Oct 2024	Title Inventory	ETL
14 Nov 2024	Pre Plat Resubmittal	ETL

CERTIFICATION

PRELIMINARY
NOT FOR
CONSTRUCTION

IF THE SIGNATURE, SEAL OR FOUR LINES DIRECTLY ABOVE ARE NOT VISIBLE, THIS SHEET HAS BEEN REPRODUCED BEYOND INTENDED READABILITY AND IS NO LONGER A VALID DOCUMENT. PLEASE CONTACT THE ENGINEER TO REQUEST ADDITIONAL DOCUMENTS.

PRELIMINARY PLAT
NOVEMBER 14, 2024



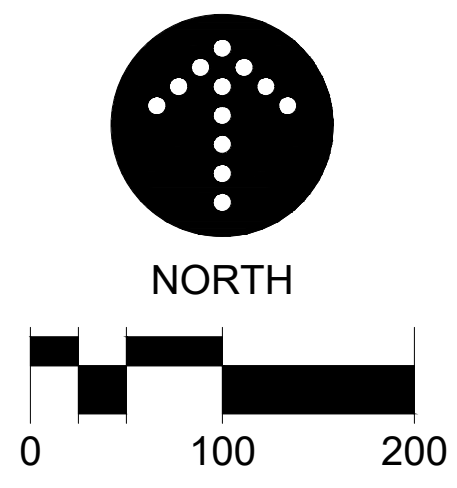
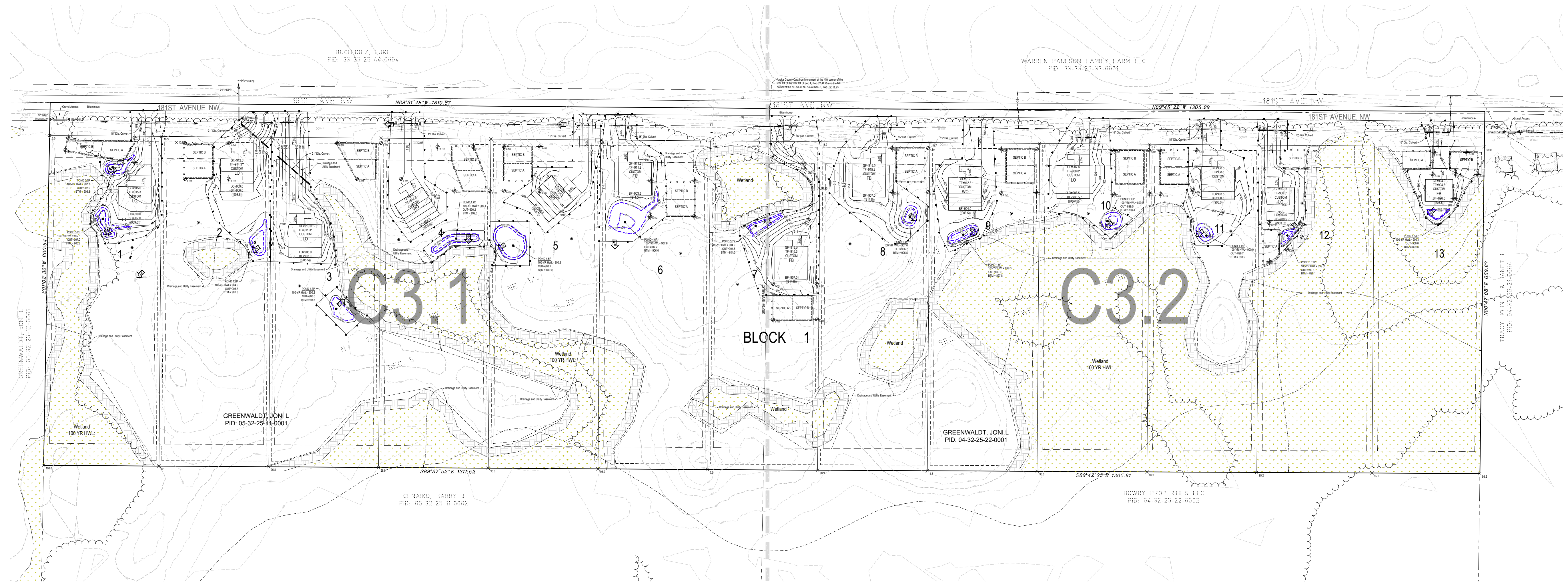
105 South Fifth Avenue Tel: 612-252-9070
Suite 513 Fax: 612-252-9077
Minneapolis, MN 55401 Web: landform.net

FILE NAME C300ZZZ725.DWG
PROJECT NO. ZZZZ4725

GRADING, DRAINAGE & EROSION CONTROL INDEX

C3.0

Landform and Site to Finish are registered service marks of Landform Professional Services, LLC.

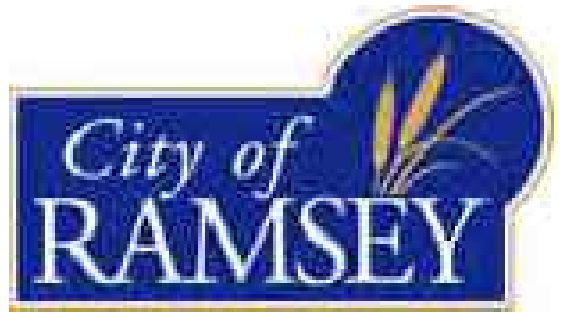


OWNER

ALAN & JONI GREENWALDT

4741 153RD AVENUE NW
RAMSEY, MN 55303
612-202-9421

CITY



PROJECT

EMERALD ESTATES
RAMSEY, MINNESOTA

ISSUE / REVISION HISTORY

DATE	ISSUE / REVISION	REVIEW
18 Oct 2024	Tree Inventory	ETL
14 Nov 2024	Pre Plat Resubmittal	ETL

CERTIFICATION

PRELIMINARY
NOT FOR
CONSTRUCTION

IF THE SIGNATURE, SEAL OR FOUR LINES DIRECTLY ABOVE ARE NOT VISIBLE, THIS SHEET HAS BEEN REPRODUCED BEYOND INTENDED READABILITY AND IS NO LONGER A VALID DOCUMENT. PLEASE CONTACT THE ENGINEER TO REQUEST ADDITIONAL DOCUMENTS.

PRELIMINARY PLAT
NOVEMBER 14, 2024



105 South Fifth Avenue
Suite 513
Minneapolis, MN 55401

Tel: 612-252-9070
Fax: 612-252-9077
Web: landform.net

FILE NAME C3002ZZ725.DWG

PROJECT NO. ZZZ24725

GRADING, DRAINAGE & EROSION
CONTROL INSET 1

C3.1

Landform and Site to Finish are registered service marks of Landform Professional Services, LLC.

BUCHHOLZ, LUKE
PID: 33-33-25-44-0004

181ST AVENUE NW

181ST AVE NW N89°31'48"W 1310.87

BLOCK

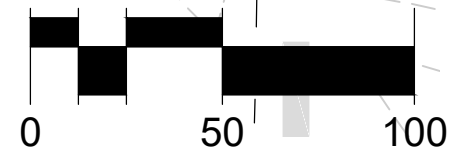
MATCHLINE
SEE SHEET C3.2

GREENWALDT, JONI L
PID: 05-32-25-11-0001

CENAICO, BARRY J
PID: 05-32-25-11-0002

S89°37'52"E 1311.52

NORTH



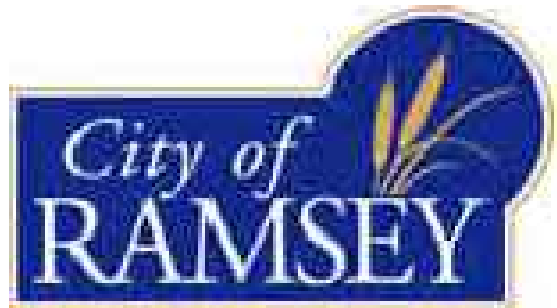
© LANDFORM 2024

OWNER

ALAN & JONI GREENWALDT

4741 153RD AVENUE NW
RAMSEY, MN 55303
612-202-9421

CITY



PROJECT

EMERALD ESTATES
RAMSEY, MINNESOTA

ISSUE / REVISION HISTORY

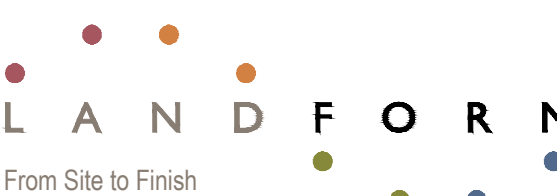
DATE	ISSUE / REVISION	REVIEW
16 Oct 2024	Title Inventory	ETL
14 Nov 2024	Pre Plat Resubmittal	ETL

CERTIFICATION

PRELIMINARY
NOT FOR
CONSTRUCTION

IF THE SIGNATURE, SEAL OR FOUR LINES DIRECTLY ABOVE ARE NOT VISIBLE, THIS SHEET HAS BEEN REPRODUCED BEYOND INTENDED READABILITY AND IS NO LONGER A VALID DOCUMENT. PLEASE CONTACT THE ENGINEER TO REQUEST ADDITIONAL DOCUMENTS.

PRELIMINARY PLAT
NOVEMBER 14, 2024



105 South Fifth Avenue
Suite 513
Minneapolis, MN 55401

Tel: 612-252-9070
Fax: 612-252-9077
Web: landform.net

FILE NAME C30022725.DWG

PROJECT NO. ZZZ24725

GRADING, DRAINAGE & EROSION
CONTROL INSET 2

C3.2

WARREN PAULSON FAMILY FARM LLC
PID: 33-33-25-33-0001

Anoka County Cast Iron Monument at the NW corner of the NW 1/4 of the NW 1/4 of Sec. 4, Twp. 32, R. 25 and the NE corner of the NE 1/4 of NE 1/4 of Sec. 5, Twp. 32, R. 25

