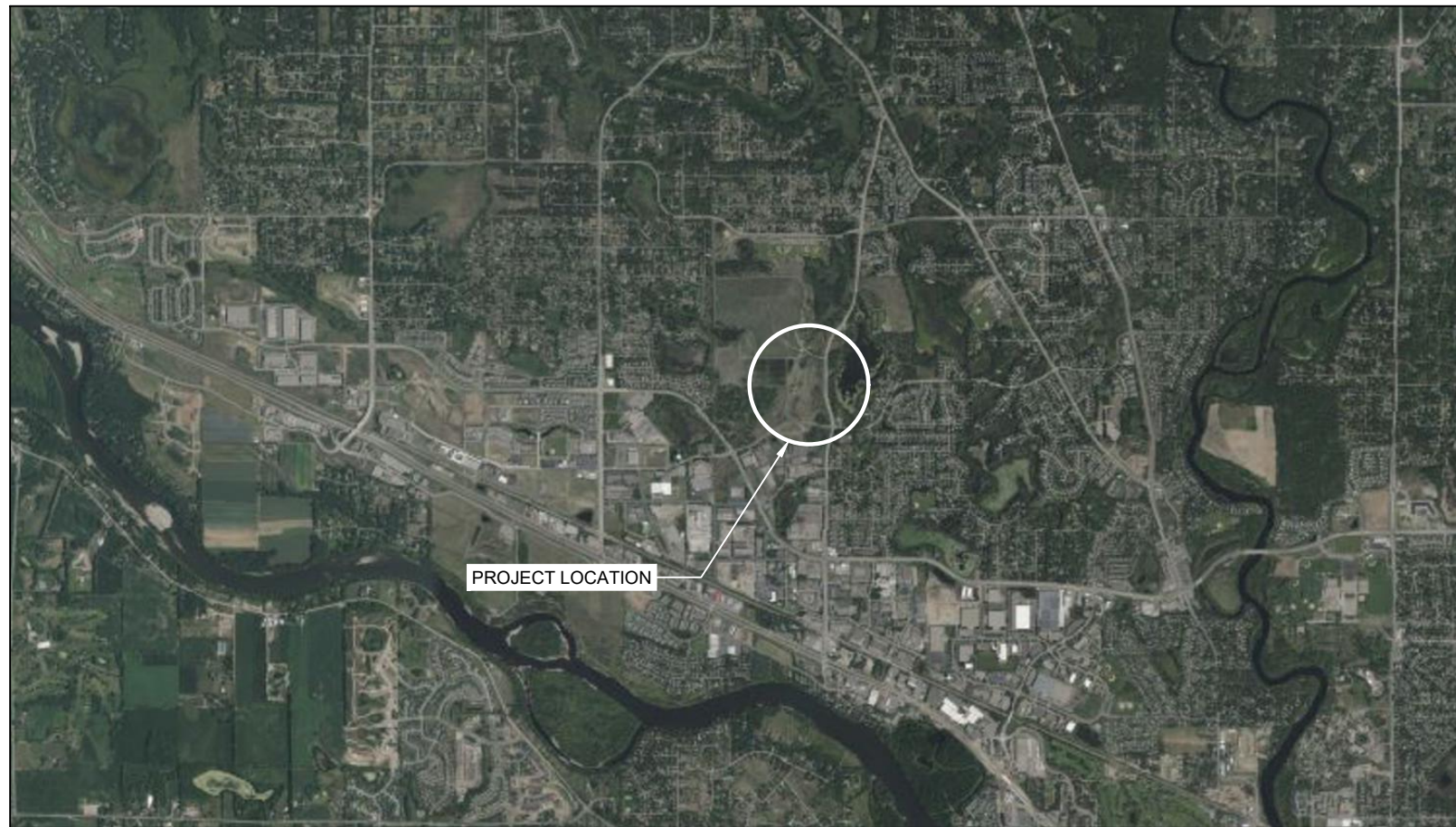


Sheet List Table	
Sheet Number	Sheet Title
01	TITLE SHEET
02	NOTES & SEQ
03	ALTA SURVEY (DONE BY OTHERS)
04	EXISTING CONDITIONS AND REMOVALS PLAN
05	TREE PRESERVATION PLAN
06	SITE PLAN
07	GRADING & DRAINAGE PLAN
08	EROSION & SEDIMENT CONTROL AND RESTORATION PLAN
09	RESTORATION NOTES
10	DETAILS SHEET 01
11	DETAILS SHEET 02



CEDAR CREEK ENERGY

LANDFILL SOLAR

RAMSEY, ANOKA COUNTY, MINNESOTA

IFPR - ISSUED FOR PERMIT REVIEW



PROJECT LOCATION, REFERENCE MAP

FEATURE	EXISTING	PROPOSED
SILT FENCE		~SF~
GUY WIRE	G	
BURIED ELECTRIC LINES	E-U	
BURIED TELEPHONE	T-U	
GAS LINE	G	
CHAIN LINK FENCE	X X X X	—
PERIMETER FENCE	—	—
CONTOUR	- - - -	- - - -
SEDIMENT LOGS		+ + + +
DRAINAGE FLOW ARROWS	➔	
LEASE BOUNDARY	- - - -	
CONSTRUCTION LIMITS		- - - -
EASEMENT	- - - -	
EXISTING LIGHT POLE	☀	
EXISTING WATER LINE	—	
EXISTING FIELD ROAD	- - - -	
CONSTRUCTION EXIT		▨
SOIL RETENTION BLANKET		▨

LANDOWNER NAME AND ADDRESS
 MINNESOTA STATE OF
 IN CARE OF: PCA CLOSED LANDFILL PROG UNIT
 520 LAFAYETTE RD N
 ST PAUL MN 55155

GENERAL NOTES

EXISTING UTILITIES

THE LOCATION OF UNDERGROUND FACILITIES AND/OR STRUCTURES AS SHOWN ON THE PLANS ARE BASED ON AVAILABLE RECORDS AT THE TIME THE PLANS WERE PREPARED AND ARE NOT GUARANTEED TO BE COMPLETE OR CORRECT.

THE SUBSURFACE UTILITY INFORMATION SHOWN IS UTILITY QUALITY LEVEL D, AS DETERMINED USING THE GUIDELINES OF "C/ASCE 38-02 STANDARD GUIDELINES FOR THE COLLECTION AND DEPICTION OF EXISTING SUBSURFACE UTILITY DATA."

THE CONTRACTOR IS RESPONSIBLE FOR CONTACTING ALL UTILITIES 72 HOURS PRIOR TO CONSTRUCTION TO DETERMINE THE EXACT LOCATION OF ALL FACILITIES AND TO PROVIDE ADEQUATE PROTECTION OF SAID UTILITIES DURING THE COURSE OF WORK.

CONSTRUCTION NOTE

CONTRACTOR SHALL TAKE ALL NECESSARY MEASURES TO MAINTAIN OPERATION OF EXISTING UTILITIES THROUGHOUT THE DURATION OF THE PROJECT. IN THE EVENT THAT AN INTERRUPTION OF SERVICE IS UNAVOIDABLE IN ORDER TO COMPLETE THE WORK, CONTRACTOR SHALL PROVIDE ADEQUATE NOTIFICATION TO ALL AFFECTED ENTITIES A MINIMUM OF 3 WORKING DAYS IN ADVANCE OF ANY INTERRUPTION.

GOVERNING SPECIFICATIONS

THE 2020 EDITION OF THE MINNESOTA DEPARTMENT OF TRANSPORTATION "STANDARD SPECIFICATIONS FOR CONSTRUCTION" SHALL GOVERN.

ALL TRAFFIC CONTROL DEVICES AND SIGNING SHALL CONFORM TO MINNESOTA MANUAL ON UNIFORM TRAFFIC CONTROL DEVICES, INCLUDING FIELD MANUAL FOR TEMPORARY CONTROL ZONE LAYOUTS.

GOPHER STATE ONE-CALL

IT IS THE LAW THAT ANYONE EXCAVATING AT ANY SITE MUST NOTIFY GOPHER STATE ONE CALL (GSOC) SO THAT UNDERGROUND ELECTRIC, NATURAL GAS, TELEPHONE OR OTHER UTILITY LINES CAN BE MARKED ON OR NEAR YOUR PROPERTY BEFORE ANY DIGGING BEGINS. A 48-HOUR NOTICE, NOT INCLUDING WEEKENDS, IS REQUIRED. CALLS CAN BE MADE TO GSOC AT 1-800-252-1166 OR (651) 454-0002, MONDAY THROUGH FRIDAY (EXCEPT HOLIDAYS) FROM 7 A.M. TO 5 P.M.



I HEREBY CERTIFY THAT THIS PLAN, SPECIFICATION, OR REPORT WAS PREPARED BY ME OR UNDER MY DIRECT SUPERVISION AND THAT I AM A DULY LICENSED PROFESSIONAL ENGINEER UNDER THE LAWS OF THE STATE OF MINNESOTA.

Kyle D. Crawford
 KYLE D. CRAWFORD DATE: 02/18/2025 LICENSE #54906

DATE	NO.	DESCRIPTION
02/18/2025	1	IFPR - ISSUED FOR PERMIT REVIEW
03/10/2025	2	IFPR UPDATED PER CITY REVIEW COMMENTS
	3	
	4	
	5	
	6	

DESIGNED BY: ERK
 DRAWN BY: BMP
 CHECKED BY: KDC
 EOR JOB #1518-0020



LANDFILL SOLAR
 RAMSEY, ANOKA COUNTY, MINNESOTA

CEDAR CREEK ENERGY RAMSEY, MINNESOTA, 55303

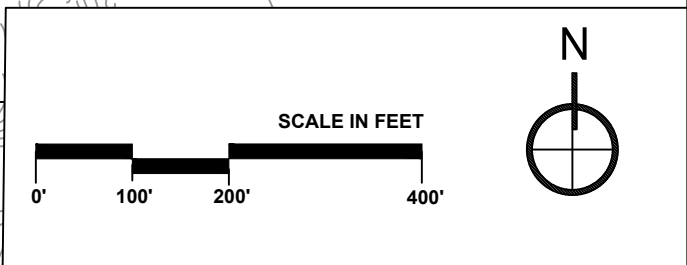
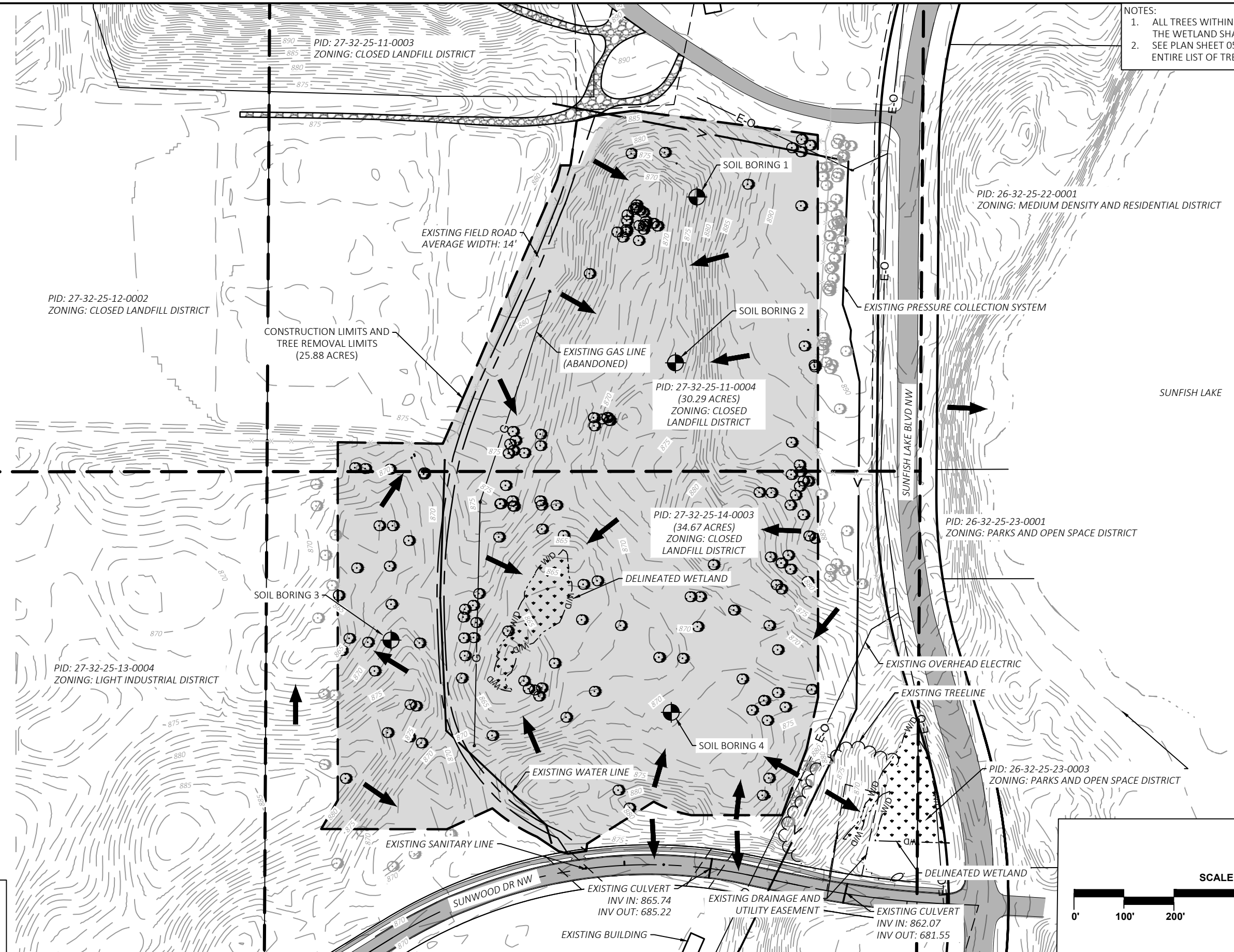
TITLE SHEET

SHEET 01 OF 11

Plot Date: 03/10/2025
 Drawing Name: X:\Clients_Photos\1518_Cedar_Creek_Energy\0020_Cedar_Creek_Energy\1518_001.dwg
 User: Kyle D. Crawford
 Path: \\server\projects\1518_Cedar_Creek_Energy\1518_001.dwg
 Project: 1518_Cedar_Creek_Energy
 Title: 001 - TITLE SHEET
 Author: Kyle D. Crawford
 Date: 02/18/2025
 Time: 10:00:00 AM
 Plot Date: 03/10/2025
 Plot Time: 10:00:00 AM
 Plot User: Kyle D. Crawford
 Plot Device: HP DesignJet T1100e
 Plot Path: \\server\projects\1518_Cedar_Creek_Energy\1518_001.dwg
 Plot Scale: 1:1
 Plot Orientation: Landscape
 Plot Color: Black
 Plot Lineweight: 0.25
 Plot Font: Arial, 10
 Plot Background: None
 Plot Border: Yes
 Plot Title: Yes
 Plot Sheet: Yes
 Plot Scale: 1:1
 Plot Orientation: Landscape
 Plot Color: Black
 Plot Lineweight: 0.25
 Plot Font: Arial, 10
 Plot Background: None
 Plot Border: Yes
 Plot Title: Yes
 Plot Sheet: Yes



- NOTES:
1. ALL TREES WITHIN CONSTRUCTION LIMITS AND OUTSIDE THE WETLAND SHALL BE REMOVED.
 2. SEE PLAN SHEET 05 - TREE PRESERVATION PLAN FOR ENTIRE LIST OF TREES ONSITE AND TRANSPLANTED.



Plot Date: 03/10/2025
 Drawing Name: X:\Clients\ER\1518_Cedar_Creek_Energy\0020_Corpus_Landfill_Solar\09_GIS\dwg\Sheet04\1518_0020_Existing_Conditions.dwg
 User: jkennedy
 Plot Date: 03/10/2025



know what's below.
Call before you dig.



MINNESOTA
GOPHER STATE ONE CALL



EMMONS & OLIVIER RESOURCES, INC.
 1919 UNIV. AVE. W. #300 ST. PAUL, MN
 TEL: 651.770.8448 WWW.EORINC.COM

I HEREBY CERTIFY THAT THIS PLAN, SPECIFICATION, OR REPORT WAS PREPARED BY ME OR UNDER MY DIRECT SUPERVISION AND THAT I AM A DULY LICENSED PROFESSIONAL ENGINEER UNDER THE LAWS OF THE STATE OF MINNESOTA.

Kyle D. Crawford
 KYLE D. CRAWFORD DATE: 02/18/2025 LICENSE #54906

DATE	NO.	DESCRIPTION
02/18/2025	1	IFPR - ISSUED FOR PERMIT REVIEW
03/10/2025	2	IFPR UPDATED PER CITY REVIEW COMMENTS
	3	
	4	
	5	
	6	

DESIGNED BY: ERK
 DRAWN BY: BMP
 CHECKED BY: KDC
 EOR JOB #1518-0020



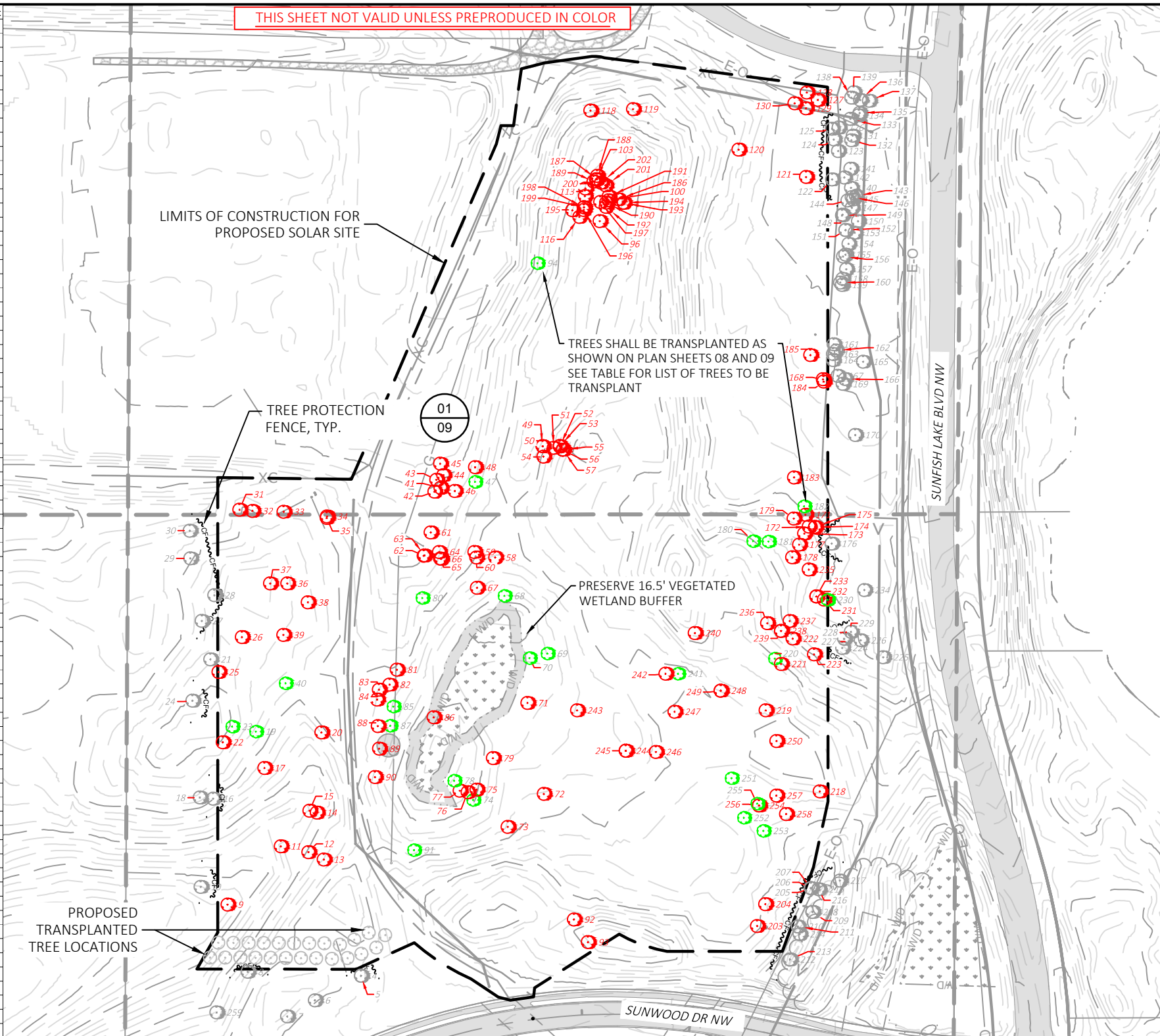
LANDFILL SOLAR
 RAMSEY, ANOKA COUNTY, MINNESOTA

CEDAR CREEK ENERGY RAMSEY, MINNESOTA, 55303

EXISTING CONDITIONS AND REMOVALS PLAN

SHEET 04 OF 11

THIS SHEET NOT VALID UNLESS PREPRODUCED IN COLOR

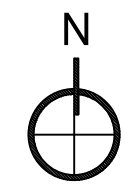


FID	DBH	SPECIES	Preserve	Remove	Transplant
4	5	EASTERN RED CEDAR	Yes		
5	5	EASTERN RED CEDAR	Yes		
6	11	EASTERN RED CEDAR	Yes		
7	17	BLACK CHERRY	Yes		
8	9	EASTERN RED CEDAR	Yes		
9	7	NORTHERN PIN OAK		Remove	
10	10	EASTERN RED CEDAR	Yes		
11	9	EASTERN RED CEDAR		Remove	
12	13	EASTERN RED CEDAR		Remove	
13	5	EASTERN RED CEDAR		Remove	
14	5	EASTERN RED CEDAR		Remove	
15	10	EASTERN RED CEDAR		Remove	
16	5	EASTERN RED CEDAR	Yes		
17	5	EASTERN RED CEDAR		Remove	
18	5	EASTERN RED CEDAR	Yes		
19	4	EASTERN RED CEDAR	Yes		Transplant
20	9	EASTERN RED CEDAR		Remove	
21	5	EASTERN RED CEDAR	Yes		
22	5	EASTERN RED CEDAR		Remove	
23	4	EASTERN RED CEDAR	Yes		Transplant
24	4	EASTERN RED CEDAR	Yes		
25	5	EASTERN RED CEDAR		Remove	
26	8	EASTERN RED CEDAR		Remove	
27	29	BUR OAK	Yes		
28	24	BUR OAK (DEAD)		Exempt	
29	28	BUR OAK	Yes		
30	32	BUR OAK	Yes		
31	15	RED PINE		Remove	
32	16	RED PINE		Remove	
33	35	BUR OAK		Remove	
34	4.5	EASTERN RED CEDAR		Remove	
35	7	EASTERN RED CEDAR		Remove	
36	7	EASTERN RED CEDAR		Remove	
37	5	EASTERN RED CEDAR		Remove	
38	5	EASTERN RED CEDAR		Remove	
39	4.5	EASTERN RED CEDAR		Remove	
40	4	EASTERN RED CEDAR	Yes		Transplant
41	16	BUR OAK		Remove	
42	23	BUR OAK		Remove	
43	24	BUR OAK		Remove	
44	21	BUR OAK		Remove	
45	5	BUR OAK		Remove	
46	5.5	EASTERN RED CEDAR		Remove	
47	4	EASTERN RED CEDAR	Yes		Transplant
48	7	EASTERN RED CEDAR		Remove	
49	4.5	EASTERN RED CEDAR		Remove	
50	4.5	EASTERN RED CEDAR		Remove	
51	12	BUR OAK		Remove	
52	6.5	BUR OAK		Remove	
53	10	BUR OAK		Remove	
54	34	BUR OAK		Remove	
55	13	BUR OAK		Remove	
56	19	BUR OAK		Remove	
57	5	EASTERN RED CEDAR		Remove	
58	25	COTTONWOOD		Remove	
59	28	COTTONWOOD		Remove	
60	9	COTTONWOOD		Remove	
61	6	EASTERN RED CEDAR		Remove	
62	10	COTTONWOOD		Remove	
63	10	COTTONWOOD		Remove	
64	9	COTTONWOOD		Remove	
65	9	COTTONWOOD		Remove	
66	12	COTTONWOOD		Remove	
67	5	EASTERN RED CEDAR		Remove	
68	4	EASTERN RED CEDAR	Yes		Transplant
69	4	EASTERN RED CEDAR	Yes		Transplant
70	4	EASTERN RED CEDAR	Yes		Transplant
71	6	EASTERN RED CEDAR		Remove	
72	12	EASTERN RED CEDAR		Remove	
73	11	EASTERN RED CEDAR		Remove	
74	4	EASTERN RED CEDAR	Yes		Transplant
75	4.5	EASTERN RED CEDAR		Remove	
76	4.5	EASTERN RED CEDAR		Remove	
77	4.5	EASTERN RED CEDAR		Remove	
78	4	EASTERN RED CEDAR	Yes		Transplant
79	5	EASTERN RED CEDAR		Remove	
80	4	EASTERN RED CEDAR	Yes		Transplant

FID	DBH	SPECIES	Preserve	Remove	Transplant
81	5	EASTERN RED CEDAR		Remove	
82	5	EASTERN RED CEDAR		Remove	
83	4	EASTERN RED CEDAR		Remove	
84	6	EASTERN RED CEDAR		Remove	
85	4.5	EASTERN RED CEDAR	Yes		Transplant
86	4.5	EASTERN RED CEDAR		Remove	
87	4	EASTERN RED CEDAR	Yes		Transplant
88	4.5	EASTERN RED CEDAR		Remove	
89	NA	CREEPING JUNIPER	Yes		
90	5	EASTERN RED CEDAR		Remove	
91	4	EASTERN RED CEDAR	Yes		Transplant
92	9	EASTERN RED CEDAR		Remove	
93	5	EASTERN RED CEDAR		Remove	
94	4	EASTERN RED CEDAR	Yes		Transplant
96	10	COTTONWOOD		Remove	
100	16	COTTONWOOD		Remove	
103	9	COTTONWOOD		Remove	
113	18	COTTONWOOD		Remove	
116	11	COTTONWOOD		Remove	
118	5	EASTERN RED CEDAR		Remove	
119	6	EASTERN RED CEDAR		Remove	
120	12	EASTERN RED CEDAR		Remove	
121	4.5	EASTERN RED CEDAR		Remove	
122	5	EASTERN RED CEDAR	Yes		
123	5	EASTERN RED CEDAR	Yes		
124	4.5	EASTERN RED CEDAR	Yes		
125	5.5	EASTERN RED CEDAR	Yes		
126	4	EASTERN RED CEDAR	Yes		
127	5.5	RED PINE		Remove	
128	6.5	EASTERN RED CEDAR		Remove	
129	5	EASTERN RED CEDAR		Remove	
130	5.5	EASTERN RED CEDAR		Remove	
131	7.5	BLACK SPRUCE	Yes		
132	7.5	BLUE SPRUCE	Yes		
133	17	EASTERN RED CEDAR	Yes		
134	12	EASTERN RED CEDAR	Yes		
135	8	EASTERN RED CEDAR	Yes		
136	10	EASTERN RED CEDAR	Yes		
137	12	EASTERN RED CEDAR	Yes		
138	8	EASTERN RED CEDAR	Yes		
139	8	EASTERN RED CEDAR	Yes		
140	20	EASTERN RED CEDAR	Yes		
141	4	EASTERN RED CEDAR	Yes		
142	9	EASTERN RED CEDAR	Yes		
143	12	EASTERN RED CEDAR	Yes		
144	7.5	EASTERN RED CEDAR	Yes		
145	12	EASTERN RED CEDAR	Yes		
146	6.5	EASTERN RED CEDAR	Yes		
147	13	EASTERN RED CEDAR	Yes		
148	6	EASTERN RED CEDAR	Yes		
149	7	EASTERN RED CEDAR	Yes		
150	8.5	EASTERN RED CEDAR	Yes		
151	4	EASTERN RED CEDAR	Yes		
152	7	EASTERN RED CEDAR	Yes		
153	5.5	EASTERN RED CEDAR	Yes		
154	7	EASTERN RED CEDAR	Yes		
155	9	EASTERN RED CEDAR	Yes		
156	6	EASTERN RED CEDAR	Yes		
157	8	EASTERN RED CEDAR	Yes		
158	8	EASTERN RED CEDAR	Yes		
159	9	EASTERN RED CEDAR	Yes		
160	14	EASTERN RED CEDAR	Yes		
161	4	EASTERN RED CEDAR	Yes		
162	4	EASTERN RED CEDAR	Yes		
163	4.5	EASTERN RED CEDAR	Yes		
164	15	EASTERN RED CEDAR	Yes		
165	4	EASTERN RED CEDAR	Yes		
166	4	EASTERN RED CEDAR	Yes		
167	4.5	EASTERN RED CEDAR	Yes		
168	5	EASTERN RED CEDAR		Remove	
169	4	EASTERN RED CEDAR	Yes		
170	4	EASTERN RED CEDAR	Yes		
171	37	BUR OAK		Remove	
172	28	BUR OAK		Remove	
173	21	BUR OAK		Remove	
174	4	BUR OAK		Remove	
175	5.5	BUR OAK		Remove	
176	5	EASTERN RED CEDAR	Yes		
177	4.5	EASTERN RED CEDAR		Remove	
178	5	EASTERN RED CEDAR		Remove	
179	4.5	EASTERN RED CEDAR		Remove	
180	4	EASTERN RED CEDAR	Yes		Transplant
181	4	EASTERN RED CEDAR	Yes		Transplant
182	4	EASTERN RED CEDAR	Yes		Transplant

- NOTES:
- ALL SPECIES OF OAK WITH A DBH OF 4" OR GREATER; ALL CONIFEROUS SPECIES WITH A DBH OF 4" OR GREATER; AND ALL OTHER TREES WITH A DBH OF 8" OR GREATER WERE SURVEYED WITHIN 30' OF PROPOSED CONSTRUCTION LIMITS. TREES BEYOND THAT EXTENT WITHIN THE PROPERTY WERE NOT SURVEYED.
 - #89 CREEPING JUNIPER IDENTIFIED ON SITE IS NOT INCLUDED IN CALCULATIONS BUT WILL BE PRESERVED AND PROTECTED THROUGHOUT CONSTRUCTION.
 - #28 BUR OAK IS DEAD AND WAS NOT INCLUDED IN THE CALCULATIONS.

Total Significant Trees on Site =	2160.5
Total Inches Removed =	1465.5
Removed Significant Tree Inches / Total Significant Tree Inches =	67.83%



EOR ecology community
 EMMONS & OLIVIER RESOURCES, INC.
 1919 UNIV. AVE. W. #300 ST. PAUL, MN
 TEL: 651.770.8448 WWW.EORINC.COM

I HEREBY CERTIFY THAT THIS PLAN, SPECIFICATION, OR REPORT WAS PREPARED BY ME OR UNDER MY DIRECT SUPERVISION AND THAT I AM A DULY LICENSED PROFESSIONAL ENGINEER UNDER THE LAWS OF THE STATE OF MINNESOTA.

KYLE D. CRAWFORD DATE: 02/18/2025 LICENSE #54906

DATE	NO.	DESCRIPTION
02/18/2025	1	IFPR - ISSUED FOR PERMIT REVIEW
03/10/2025	2	IFPR UPDATED PER CITY REVIEW COMMENTS
	3	
	4	
	5	
	6	

DESIGNED BY: ERK
 DRAWN BY: BMP
 CHECKED BY: KDC
 EOR JOB #1518-0020

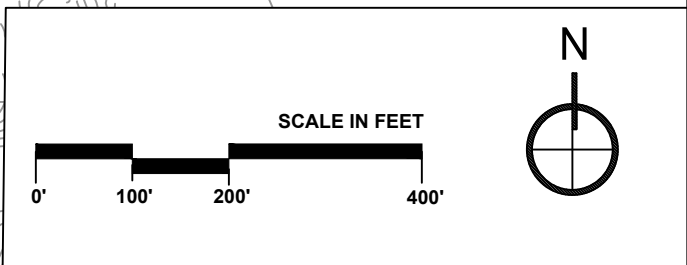
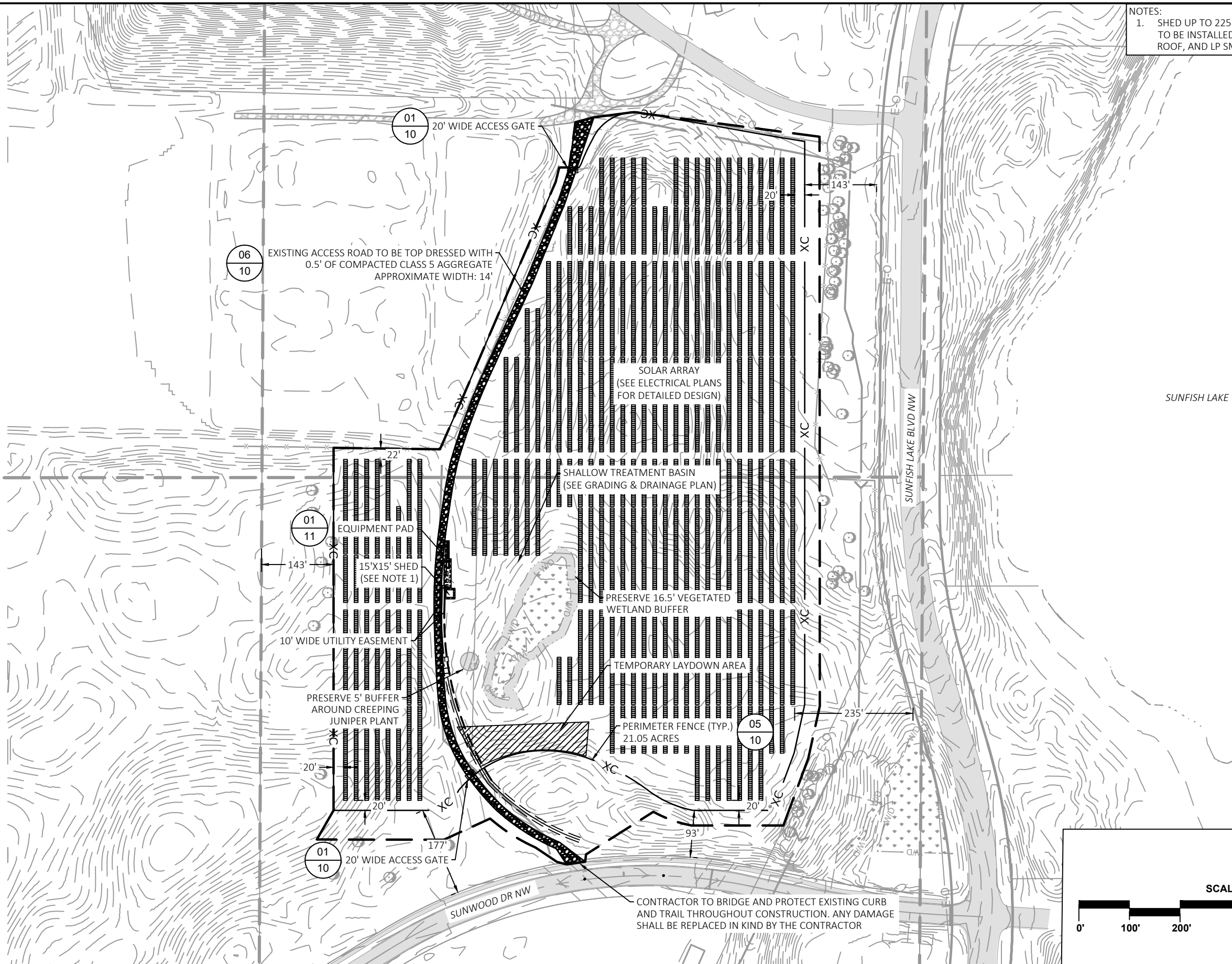


LANDFILL SOLAR
 RAMSEY, ANOKA COUNTY, MINNESOTA
 CEDAR CREEK ENERGY RAMSEY, MINNESOTA, 55303

TREE PRESERVATION PLAN
 SHEET 05 OF 11

FID	DBH	SPECIES	Preserve	Remove	Transplant
183	5	EASTERN RED CEDAR		Remove	
184	5.5	EASTERN RED CEDAR		Remove	
185	4.5	EASTERN RED CEDAR		Remove	
186	9	COTTONWOOD		Remove	
187	11	COTTONWOOD		Remove	
188	12	COTTONWOOD		Remove	
189	13	COTTONWOOD		Remove	
190	11	COTTONWOOD		Remove	
191	9	COTTONWOOD		Remove	
192	12	COTTONWOOD		Remove	
193	10	COTTONWOOD		Remove	
194	12	COTTONWOOD		Remove	
195	8	COTTONWOOD		Remove	
196	10	COTTONWOOD		Remove	
197	20	COTTONWOOD		Remove	
198	16	COTTONWOOD		Remove	
199	13	COTTONWOOD		Remove	
200	12	COTTONWOOD		Remove	
201	27	COTTONWOOD		Remove	
202	12	COTTONWOOD		Remove	
203	18	COTTONWOOD		Remove	
204	13	COTTONWOOD		Remove	
205	4.5	EASTERN RED CEDAR	Yes		
206	4.5	EASTERN RED CEDAR	Yes		
207	4	EASTERN RED CEDAR	Yes		
208	6	EASTERN RED CEDAR	Yes		
209	5	EASTERN RED CEDAR	Yes		
210	5.5	EASTERN RED CEDAR	Yes		
211	4	EASTERN RED CEDAR	Yes		
212	5.5	EASTERN RED CEDAR	Yes		
213	25	BUR OAK	Yes		
214	22	BUR OAK	Yes		
215	10	NORTHERN PIN OAK	Yes		
216	9	NORTHERN PIN OAK	Yes		
217	18	NORTHERN PIN OAK	Yes		
218	5	EASTERN RED CEDAR		Remove	
219	4.5	EASTERN RED CEDAR		Remove	
220	4	EASTERN RED CEDAR	Yes		Transplant
221	4.5	EASTERN RED CEDAR		Remove	
222	6.5	EASTERN RED CEDAR		Remove	
223	4.5	EASTERN RED CEDAR		Remove	
224	6	EASTERN RED CEDAR	Yes		
225	4.5	EASTERN RED CEDAR	Yes		
226	4	EASTERN RED CEDAR	Yes		
227	4	EASTERN RED CEDAR	Yes		
228	4	EASTERN RED CEDAR	Yes		
229	4.5	EASTERN RED CEDAR	Yes		
230	4	EASTERN RED CEDAR	Yes		Transplant
231	5.5	EASTERN RED CEDAR		Remove	
232	5	EASTERN RED CEDAR		Remove	
233	5.5	EASTERN RED CEDAR		Remove	
234	4.5	EASTERN RED CEDAR	Yes		
235	4.5	EASTERN RED CEDAR		Remove	
236	4.5	EASTERN RED CEDAR		Remove	
237	6	EASTERN RED CEDAR		Remove	
238	6.5	EASTERN RED CEDAR		Remove	
239	4.5	EASTERN RED CEDAR		Remove	
240	5	EASTERN RED CEDAR		Remove	
241	4	EASTERN RED CEDAR	Yes		Transplant
242	4.5	EASTERN RED CEDAR		Remove	
243	7	EASTERN RED CEDAR		Remove	
244	40	COTTONWOOD		Remove	
245	12	COTTONWOOD		Remove	
246	28	COTTONWOOD		Remove	
247	4.5				

NOTES:
 1. SHED UP TO 225 SF FOR ONSITE SPARE PARTS STORAGE TO BE INSTALLED, SHED TO HAVE ASPHALT SHINGLE ROOF, AND LP SMART SIDING.



Plot Date: 02/15/2025
 Drawing Name: XC:\Clients_P\1518_0202_Creek_Energy\02020_Consensus_Landfill_Solar\09_GIS\Drawings\Sheets\01518_0202_Site_Plan.dwg
 User: kdc
 Title Block: EOR Imperial CAD Templates\Title Blocks\image_xref\01518_0202_Engineering_Images\XC_Template_EOR_Imperial_CAD_Template.dwg
 Title Block: EOR Imperial CAD Templates\Title Blocks\image_xref\01518_0202_Engineering_Images\XC_Template_EOR_Imperial_CAD_Template.dwg
 Title Block: EOR Imperial CAD Templates\Title Blocks\image_xref\01518_0202_Engineering_Images\XC_Template_EOR_Imperial_CAD_Template.dwg



EOR water ecology community
 EMMONS & OLIVIER RESOURCES, INC.
 1919 UNIV. AVE. W. #300 ST. PAUL, MN
 TEL: 651.770.8448 WWW.EORINC.COM

I HEREBY CERTIFY THAT THIS PLAN, SPECIFICATION, OR REPORT WAS PREPARED BY ME OR UNDER MY DIRECT SUPERVISION AND THAT I AM A DULY LICENSED PROFESSIONAL ENGINEER UNDER THE LAWS OF THE STATE OF MINNESOTA.

Kyle D. Crawford
 KYLE D. CRAWFORD DATE: 02/18/2025 LICENSE #54906

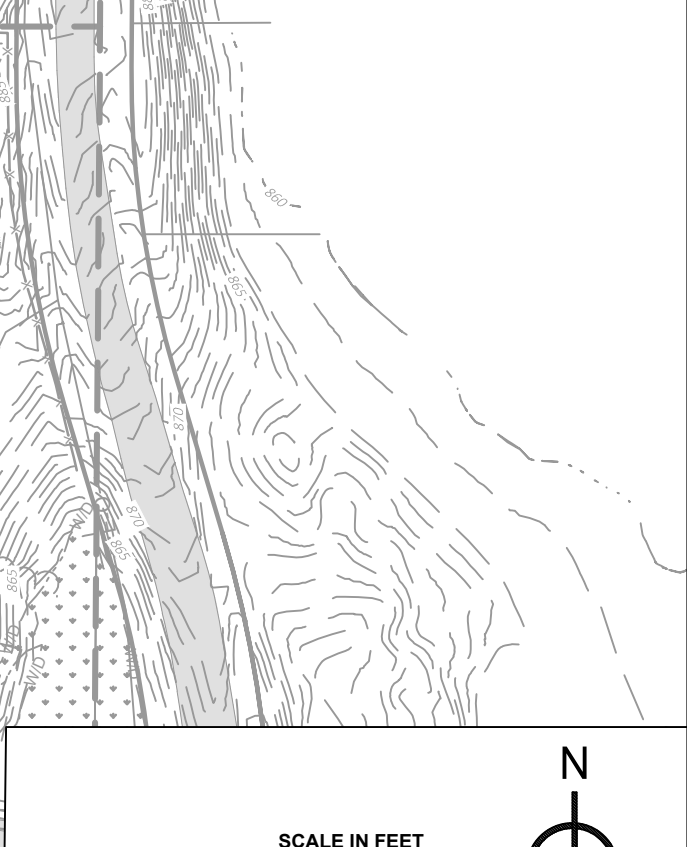
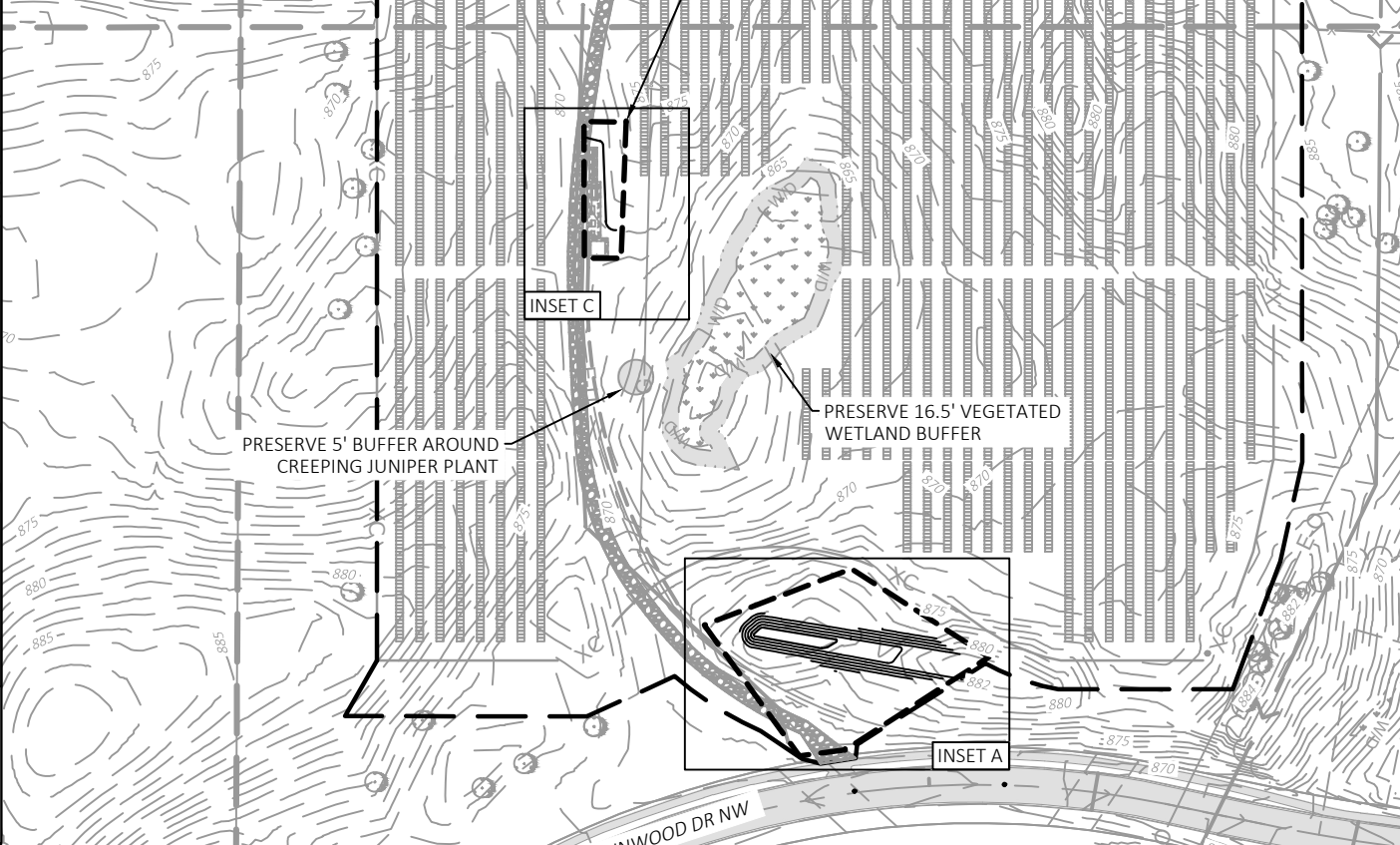
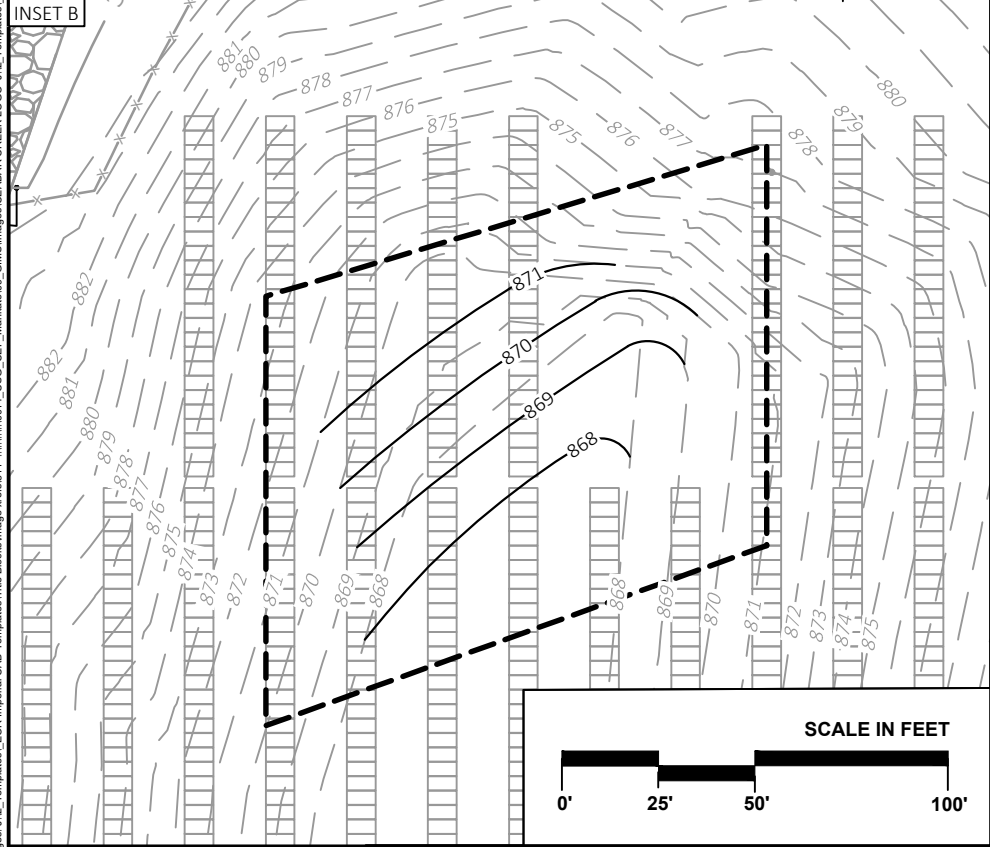
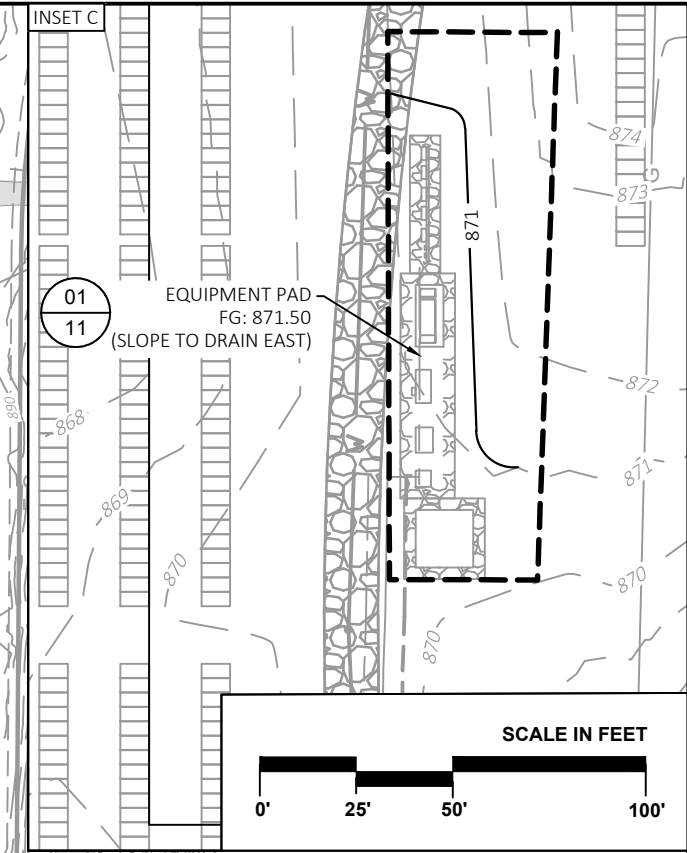
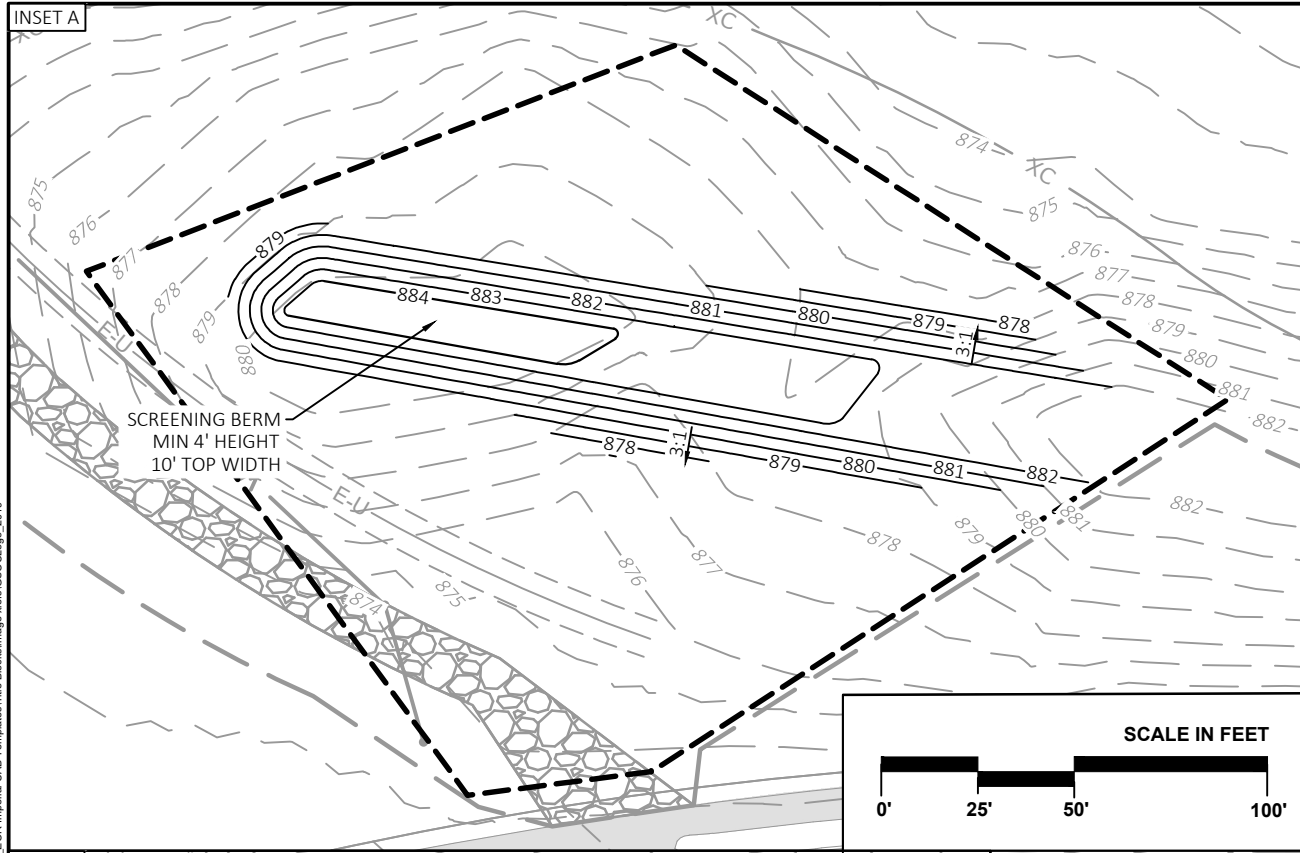
DATE	NO.	DESCRIPTION
02/18/2025	1	IFPR - ISSUED FOR PERMIT REVIEW
03/10/2025	2	IFPR UPDATED PER CITY REVIEW COMMENTS
	3	
	4	
	5	
	6	

DESIGNED BY: ERK
 DRAWN BY: BMP
 CHECKED BY: KDC
 EOR JOB #1518-0020



LANDFILL SOLAR
 RAMSEY, ANOKA COUNTY, MINNESOTA
 CEDAR CREEK ENERGY RAMSEY, MINNESOTA, 55303

SITE PLAN
 SHEET 06 OF 11



Plot Date: 02/15/2025
 Drawing Name: X:\Clients_Plan\1518_Cedar_Creek_Energy\02020_Consensus_Landfill_Solar\09_GIS\Drawings\Sheets\0707_Site_Plan.dwg
 User: 401910_0202_Engineers
 Image: 312_Templates_EOR\Imparal CAD Templates\Title Block\image area\11...11_10014_CSG_CEE_Minneapolis_GIS\Images\CEADAR_CREEK_LOGO_112_Template.dwg
 EOR Imparal CAD Templates\Title Block\image area\11...11_10014_CSG_CEE_Minneapolis_GIS\Images\CEADAR_CREEK_LOGO_112_Template.dwg
 EOR Imparal CAD Templates\Title Block\image area\11...11_10014_CSG_CEE_Minneapolis_GIS\Images\CEADAR_CREEK_LOGO_112_Template.dwg



EOR water ecology community
 EMMONS & OLIVIER RESOURCES, INC.
 1919 UNIV. AVE. W. #300 ST. PAUL, MN
 TEL: 651.770.8448 WWW.EORINC.COM

I HEREBY CERTIFY THAT THIS PLAN, SPECIFICATION, OR REPORT WAS PREPARED BY ME OR UNDER MY DIRECT SUPERVISION AND THAT I AM A DULY LICENSED PROFESSIONAL ENGINEER UNDER THE LAWS OF THE STATE OF MINNESOTA.
 KYLE D. CRAWFORD DATE: 02/18/2025 LICENSE #54906

DATE	NO.	DESCRIPTION
02/18/2025	1	IFPR - ISSUED FOR PERMIT REVIEW
03/10/2025	2	IFPR UPDATED PER CITY REVIEW COMMENTS
	3	
	4	
	5	
	6	

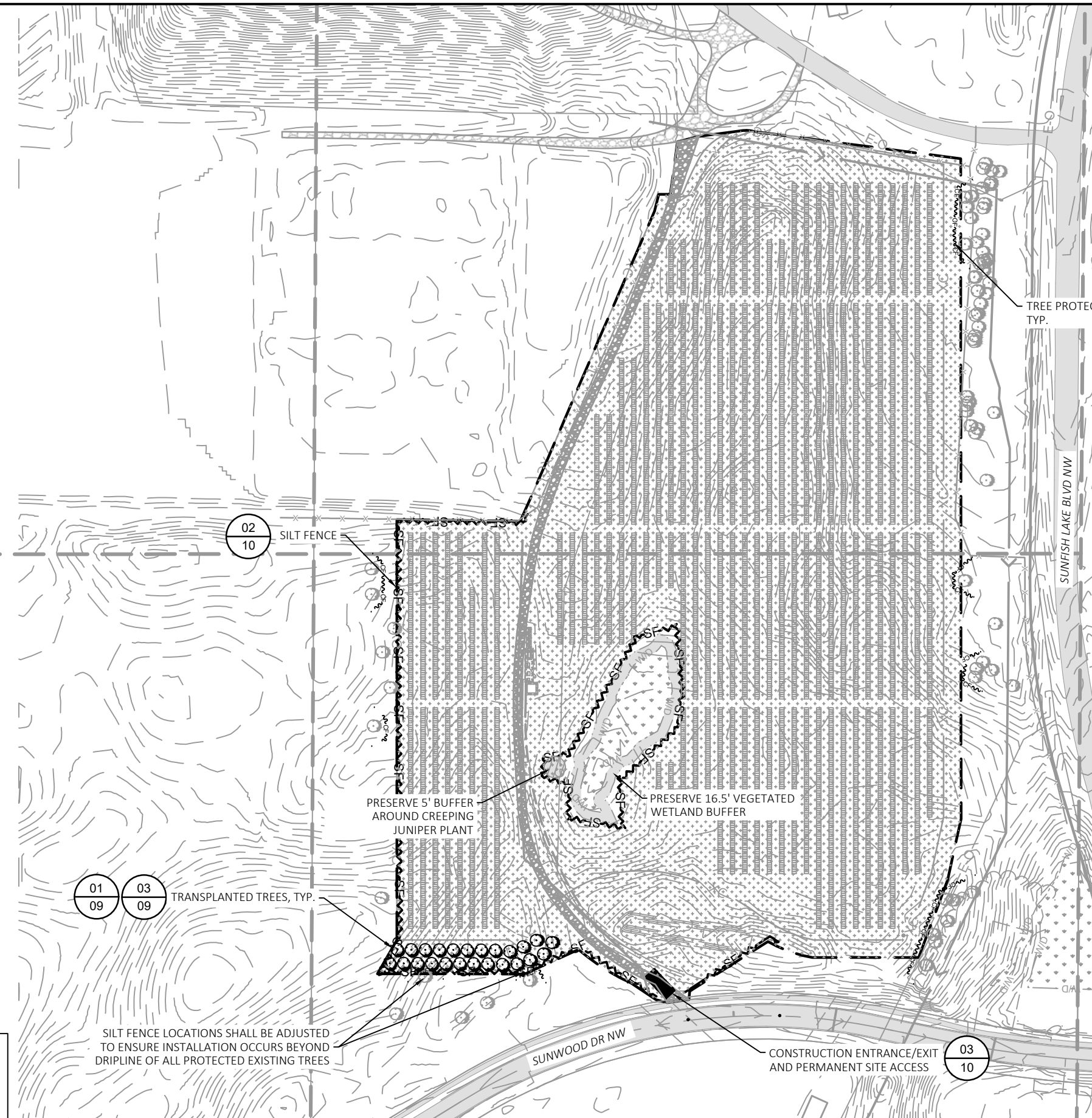
DESIGNED BY: ERK
 DRAWN BY: BMP
 CHECKED BY: KDC
 EOR JOB #1518-0020



LANDFILL SOLAR
 RAMSEY, ANOKA COUNTY, MINNESOTA
 CEDAR CREEK ENERGY RAMSEY, MINNESOTA, 55303

GRADING & DRAINAGE PLAN
 SHEET 07 OF 11

PLANT AND SEED SCHEDULE				
TREES				QTY
	TRANSPLANT EXISTING ONSITE TREES SHOWN ON PLAN SHEET 03 - TREE PRESERVATION PLAN			24
NRS NATIVE MIX	CODE	NRS NATIVE MIX	RATE	AREA
	S1	Dry Prairie Southeast Seed Mix 35-622	13.29 LB/AC	24.46 ACRES 1,065,620 sf



02/10 SILT FENCE

01/09 TREE PROTECTION FENCE, TYP.

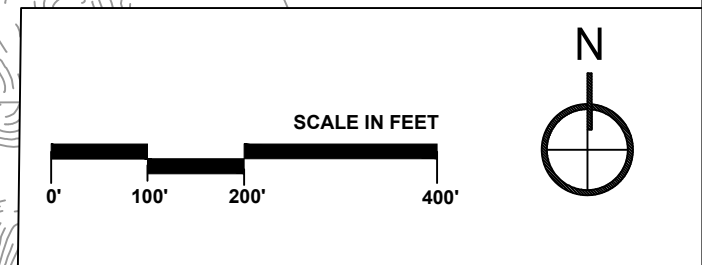
01/09 03/09 TRANSPLANTED TREES, TYP.

PRESERVE 5' BUFFER AROUND CREEPING JUNIPER PLANT

PRESERVE 16.5' VEGETATED WETLAND BUFFER

SILT FENCE LOCATIONS SHALL BE ADJUSTED TO ENSURE INSTALLATION OCCURS BEYOND DRIFLINE OF ALL PROTECTED EXISTING TREES

03/10 CONSTRUCTION ENTRANCE/EXIT AND PERMANENT SITE ACCESS



EOR water ecology community
 EMMONS & OLIVIER RESOURCES, INC.
 1919 UNIV. AVE. W. #300 ST. PAUL, MN
 TEL: 651.770.8448 WWW.EORINC.COM

I HEREBY CERTIFY THAT THIS PLAN, SPECIFICATION, OR REPORT WAS PREPARED BY ME OR UNDER MY DIRECT SUPERVISION AND THAT I AM A DULY LICENSED PROFESSIONAL ENGINEER UNDER THE LAWS OF THE STATE OF MINNESOTA.
 KYLE D. CRAWFORD DATE: 02/18/2025 LICENSE #54906

DATE	NO.	DESCRIPTION
02/18/2025	1	IFPR - ISSUED FOR PERMIT REVIEW
03/10/2025	2	IFPR UPDATED PER CITY REVIEW COMMENTS
	3	
	4	
	5	
	6	

DESIGNED BY: ERK
 DRAWN BY: BMP
 CHECKED BY: KDC
 EOR JOB #1518-0020



LANDFILL SOLAR
 RAMSEY, ANOKA COUNTY, MINNESOTA
 CEDAR CREEK ENERGY RAMSEY, MINNESOTA, 55303

EROSION & SEDIMENT CONTROL AND RESTORATION PLAN
 SHEET 08 OF 11

Plot Date: 02/15/2025
 Drawing Name: X:\Clients_P\1518_Cedar_Creek_Energy\0020_Consensus_Landfill_Solar\09_GIS\Drawings\Sheets\01518_0020_Site_Plan.dwg
 User: kdc
 Title: Erosion & Sediment Control and Restoration Plan
 Project: 1518-0020
 Date: 02/15/2025
 Scale: 1"=400'
 Author: Kyle D. Crawford
 Checker: Kyle D. Crawford
 Designer: Kyle D. Crawford
 Engineer: Kyle D. Crawford
 License: #54906
 State: MN
 Title: Professional Engineer
 Project: 1518-0020
 Date: 02/15/2025
 Scale: 1"=400'
 Author: Kyle D. Crawford
 Checker: Kyle D. Crawford
 Designer: Kyle D. Crawford
 Engineer: Kyle D. Crawford
 License: #54906
 State: MN
 Title: Professional Engineer

GENERAL NOTES

- LANDSCAPE CONTRACTOR SHALL INSPECT THE SITE AND BECOME FAMILIAR WITH EXISTING CONDITIONS RELATING TO THE NATURE AND SCOPE OF WORK.
- LANDSCAPE CONTRACTOR SHALL VERIFY PLAN LAYOUT AND BRING TO THE ATTENTION OF THE LANDSCAPE ARCHITECT DISCREPANCIES WHICH MAY COMPROMISE THE DESIGN OR INTENT OF THE LAYOUT.
- LANDSCAPE CONTRACTOR SHALL ASSURE COMPLIANCE WITH APPLICABLE CODES AND REGULATIONS GOVERNING THE WORK AND MATERIALS SUPPLIED.
- LANDSCAPE CONTRACTOR SHALL VERIFY ALIGNMENT AND LOCATION OF UNDERGROUND AND ABOVE GRADE UTILITIES AND PROVIDE THE NECESSARY PROTECTION FOR SAME BEFORE CONSTRUCTION BEGINS.
- LANDSCAPE CONTRACTOR SHALL REVIEW THE SITE FOR DEFICIENCIES IN SITE CONDITIONS WHICH MIGHT NEGATIVELY AFFECT PLANT ESTABLISHMENT, SURVIVAL OR WARRANTY. UNDESIRABLE SITE CONDITIONS SHALL BE BROUGHT TO THE ATTENTION OF THE LANDSCAPE ARCHITECT PRIOR TO BEGINNING OF WORK.
- LANDSCAPE CONTRACTOR IS RESPONSIBLE FOR ONGOING MAINTENANCE OF NEWLY INSTALLED MATERIALS UNTIL TIME OF FINAL ACCEPTANCE BY LANDSCAPE ARCHITECT. REPAIR OF ACTS OF VANDALISM OR DAMAGE WHICH MAY OCCUR PRIOR TO FINAL ACCEPTANCE SHALL BE THE RESPONSIBILITY OF THE LANDSCAPE CONTRACTOR.

SEEDING NOTES

- SEEDING SHALL FOLLOW MNDOT SEEDING MANUAL 2023 EDITION.
- SEED SHALL BE LOCAL ORIGIN AND WILD ECOTYPE. SEED ORIGIN SHALL BE CERTIFIED BY THE MN CROP IMPROVEMENT ASSOCIATION. LOCAL ORIGIN SHALL MEAN WITHIN 175 MILES OF PROJECT SITE. PROVIDE MCIA DOCUMENTATION TO LANDSCAPE ARCHITECT PRIOR TO SEEDING.
- SOW SEED MIXES ON ALL DISTURBED AREAS AFTER ALL GRADING ACTIVITIES HAVE BEEN COMPLETED. SEEDING MAY TAKE PLACE PRIOR TO PILE DRIVING AND SOLAR ARRAY INSTALLATION, HOWEVER ANY DISTURBED AREAS WILL HAVE TO BE RE-SEEDING.
- ACCEPTABLE SEEDING DATES ARE APRIL 15 - JULY 20 IN THE SPRING, OR SEPTEMBER 20 - OCTOBER 20 IN THE FALL. WRITTEN PERMISSION MUST BE GRANTED BY THE LANDSCAPE ARCHITECT TO PERFORM SEEDING OPERATIONS ON ANY OTHER DATES OF THE YEAR.
- SEEDING METHODS 1-3 ARE ANTICIPATED ACROSS THE SITE IN RESPONSE TO SITE CONDITIONS. CONTRACTOR WILL PREPARE SEEDING PLAN IN CONJUNCTION WITH PROJECT LANDSCAPE ARCHITECT, APPROVAL IS NECESSARY TO EXECUTE.
- SOW NATIVE SEEDS WITH A MULTI-BOX BROADCAST SEEDER SUCH AS THE TRILLION BY TRUAX, WHERE POSSIBLE.
- PREPARE SEED BED PRIOR TO SEEDING PER MNDOT SPEC. 2574.3.A.4.
- SOLAR ARRAYS MUST BE PROTECTED FROM HYDRO-MULCH OVERSPRAY OR CLEANED AFTER APPLICATION PER MNDOT SPEC. 2575.3.E.
- COVER NATIVE SEED MIXES WITH CLEAN STRAW MULCH (TYPE 3), AND DISC ANCHOR, EXCEPT WHERE EROSION CONTROL BLANKET IS INDICATED ON PLANS.
- USE TEMPORARY EROSION CONTROL DEVICES (SEDIMENT LOGS, SILT FENCE) AS NEEDED TO PREVENT EROSION PRIOR TO AND DURING SEED ESTABLISHMENT.
- INCLUDE A COVER CROP OF OATS WITHIN NATIVE GRASS SEED MIX (@ RATE OF 32 LB/ACRE) IF SEEDING BETWEEN OCTOBER 15TH AND AUGUST 1ST. IF SEEDING BETWEEN AUGUST 1ST AND OCTOBER 15TH, SUBSTITUTE WINTER WHEAT FOR OATS AT THE SAME RATE.

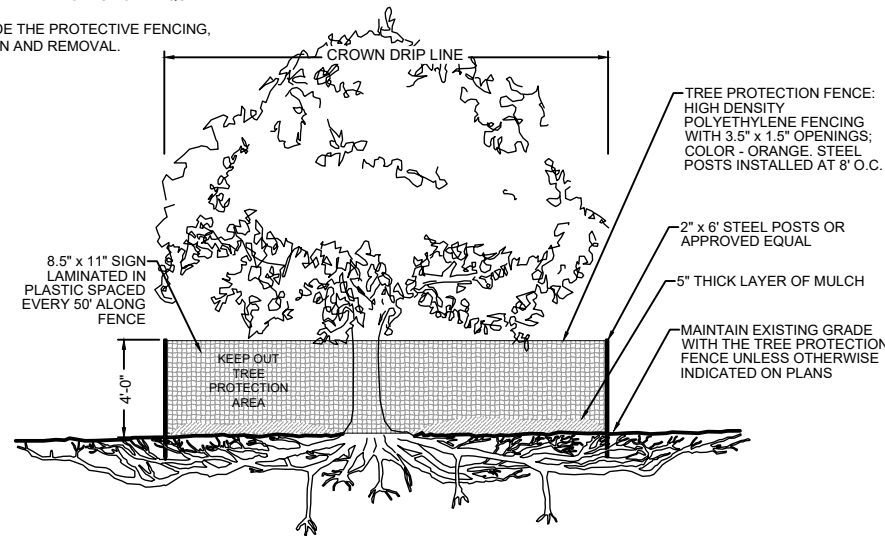
SEED ESTABLISHMENT NOTES

- ESTABLISHMENT PERIOD COMMENCES UPON ACCEPTANCE OF SEEDING (ADEQUATE COVER CROP GERMINATION AND COVERAGE) AND RUNS FOR THREE YEARS FROM THIS DATE.
- MONITOR THE SITE MONTHLY DURING THIS PERIOD TO DETECT AREAS OF WEED COLONIZATION. CUT OR TREAT ALL NOXIOUS WEEDS (AS CURRENTLY DEFINED BY MN DEPARTMENT OF AGRICULTURE) WITH GLYPHOSATE HERBICIDE AS SOON AS DETECTED.
- DURING THE FIRST GROWING SEASON MOW OR CUT THE ENTIRE SEEDED AREA EVERY 30 DAYS UNTIL SEPTEMBER 30TH AT A HEIGHT OF 5-8".
- DURING THE SECOND GROWING SEASON MOW OR CUT THE ENTIRE SEEDED AREA ONCE IN MID-JUNE AND ONCE IN MID-AUGUST AT A HEIGHT OF 5-8".
- IF AREAS OF BARE GROUND PERSIST AFTER FIRST GROWING SEASON RESEED PER PLAN.
- AFTER THE FIRST TWO GROWING SEASONS MOW OR CUT NATIVE SEED AREAS IN LATE FALL OR EARLY SPRING. RAKE OUT AND REMOVE DOWNED VEGETATION.

TREE PRESERVATION AND TRANSPLANT NOTES

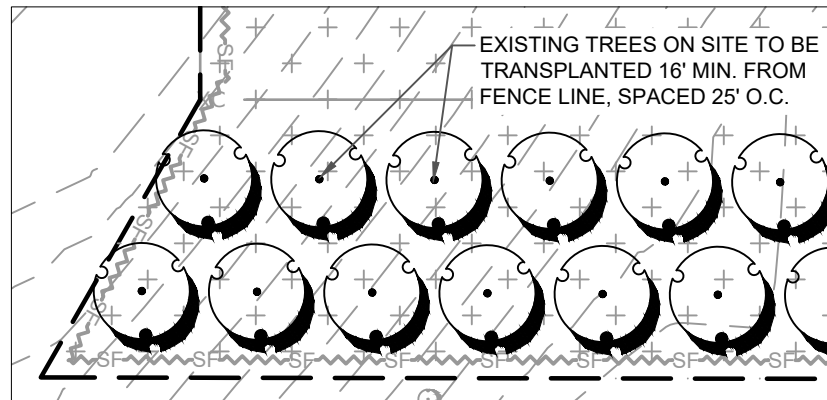
- TREES TO BE RELOCATED WILL BE TAGGED IN THE FIELD BY THE ENGINEER. CONTRACTORS SHALL IMMEDIATELY TRANSPLANT TREES DUG FOR RELOCATIONS, AND WATER AS NECESSARY. CONTRACTOR SHALL BE RESPONSIBLE FOR TREE MORTALITY AND REPLACE FAILED TREES AT NO COST TO PROJECT.

- NOTE:
- SEE SPECIFICATIONS FOR ADDITIONAL TREE PROTECTION REQUIREMENTS.
 - NO PRUNING SHALL BE PERFORMED.
 - NO EQUIPMENT SHALL OPERATE INSIDE THE PROTECTIVE FENCING, INCLUDING DURING FENCE INSTALLATION AND REMOVAL.

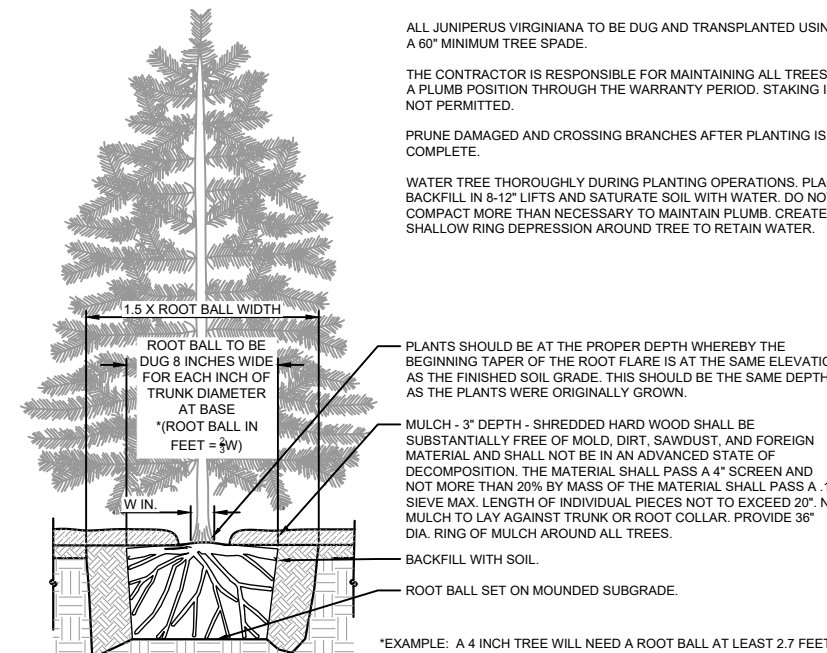


SEEDING SCHEDULE			
Symbol	Seed Type	Seeding Rate (lb/acre)	Total Area (acre)
S1	NRS Native Mix	13.25	24.46
		TOTAL	24.5

Coniferous Tree Transplanting Schedule				
Symbol	Quantity	Scientific Name	Common Name	Size
JV	24	<i>Juniperus virginiana</i>	Eastern Red Cedar	3-4' Height
		Total		



02
09 TREE TRANSPLANTING - LAYOUT PLAN
1:20



03
09 CONIFEROUS TREE TRANSPLANTING DETAIL
NOT TO SCALE

Connexus Landfill Native Mix							
Type	Scientific Name	Common Name	Seeds / sq ft	Rate (lb/ac)	% Mix (by sqft)	% Mix (by wt)	
Cover	<i>Avena sativa / Triticum aestivum</i>	Oats / Winter Wheat		25			
Forb	<i>Achillea millefolium</i>	Common Yarrow	4.91	0.08	5.78%	0.57%	
	<i>Agastache foeniculum</i>	Anise Hyssop	0.40	0.01	0.47%	0.09%	
	<i>Allium stellatum</i>	Prairie Onion	0.06	0.02	0.07%	0.11%	
	<i>Amorpha canescens</i>	Lead Plant	1.01	0.17	1.19%	1.30%	
	<i>Anemone canadensis</i>	Canada Anemone	0.02	0.01	0.03%	0.06%	
	<i>Aquilegia canadensis</i>	Wild Columbine	0.10	0.01	0.12%	0.06%	
	<i>Asclepias syriaca</i>	Common Milkweed	0.03	0.02	0.04%	0.17%	
	<i>Asclepias tuberosa</i>	Butterfly Milkweed	0.03	0.02	0.03%	0.14%	
	<i>Astragalus canadensis</i>	Canada Milkvetch	0.66	0.11	0.77%	0.79%	
	<i>Chamaecrista fasciculata</i>	Partridge Pea	0.30	0.30	0.35%	2.26%	
	<i>Coreopsis palmata</i>	Prairie Coreopsis	0.14	0.04	0.16%	0.28%	
	<i>Dalea candida</i>	White Prairie Clover	3.53	0.51	4.16%	3.82%	
	<i>Dalea purpurea</i>	Purple Prairie Clover	4.96	0.75	5.84%	5.66%	
	<i>Liatis aspera</i>	Rough Blazing Star	0.07	0.01	0.08%	0.09%	
	<i>Lupinus perennis</i>	Wild Lupine	0.01	0.02	0.01%	0.17%	
	<i>Monarda punctata</i>	Spotted Bee Balm	0.50	0.02	0.58%	0.11%	
	<i>Penstemon grandiflorus</i>	Large-flowered Beardtongue	0.19	0.04	0.23%	0.28%	
	<i>Pycnanthemum virginianum</i>	Virginia Mountain Mint	1.21	0.02	1.43%	0.11%	
	<i>Ratibida columnifera</i>	Long-headed Coneflower	2.43	0.16	2.86%	1.19%	
	<i>Rudbeckia hirta</i>	Black-eyed Susan	8.11	0.24	9.54%	1.81%	
Graminoid	<i>Bouteloua curtipendula</i>	Sideoats Grama	8.26	3.75	9.73%	28.30%	
	<i>Bouteloua gracilis</i>	Blue Grama	9.55	0.65	11.24%	4.91%	
	<i>Bromus kalmii</i>	Prairie Brome	0.73	0.25	0.86%	1.89%	
	<i>Carex brevior</i>	Plains Oval Sedge	3.20	0.30	3.76%	2.26%	
	<i>Elymus trachycaulus</i>	Slender Wheatgrass	1.52	0.60	1.79%	4.53%	
	<i>Elymus villosus</i>	Silky Wild Rye	1.21	0.60	1.43%	4.53%	
	<i>Koeleria macrantha</i>	June Grass	3.67	0.05	4.32%	0.38%	
	<i>Schizachyrium scoparium</i>	Little Bluestem	22.04	4.00	25.93%	30.19%	
	<i>Sporobolus heterolepis</i>	Prairie Dropseed	0.29	0.05	0.35%	0.38%	
			Total Guild:	50.47	10.25	59.41%	77.37%
			TOTAL SEED MIX	84.97	13.29	100%	100%

01
09 TREE PROTECTION FENCING
1:20

EOR water ecology community
EMMONS & OLIVIER RESOURCES, INC.
1919 UNIV. AVE. W. #300 ST. PAUL, MN
TEL: 651.770.8448 WWW.EORINC.COM

I HEREBY CERTIFY THAT THIS PLAN, SPECIFICATION, OR REPORT WAS PREPARED BY ME OR UNDER MY DIRECT SUPERVISION AND THAT I AM A DULY LICENSED PROFESSIONAL ENGINEER UNDER THE LAWS OF THE STATE OF MINNESOTA.

KYLE D. CRAWFORD DATE: 02/18/2025 LICENSE #54906

DATE	NO.	DESCRIPTION
02/18/2025	1	IFPR - ISSUED FOR PERMIT REVIEW
03/10/2025	2	IFPR UPDATED PER CITY REVIEW COMMENTS
	3	
	4	
	5	
	6	

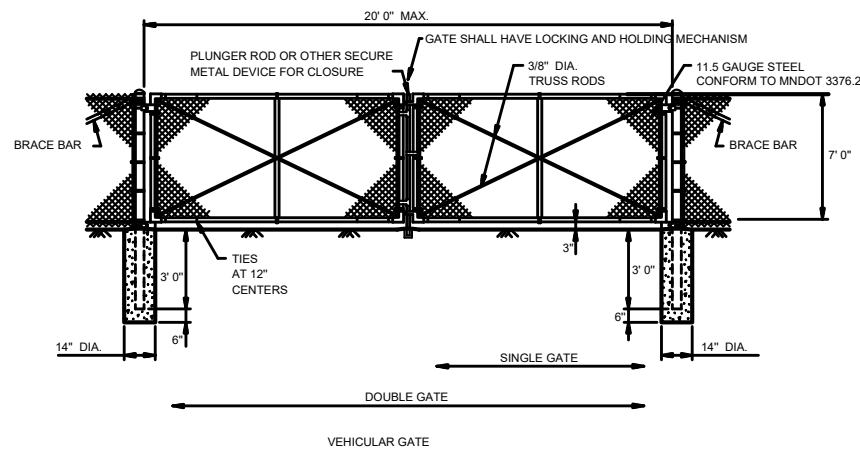
DESIGNED BY: ERK
DRAWN BY: BMP
CHECKED BY: KDC
EOR JOB #1518-0020



LANDFILL SOLAR
RAMSEY, ANOKA COUNTY, MINNESOTA
CEDAR CREEK ENERGY RAMSEY, MINNESOTA, 55303

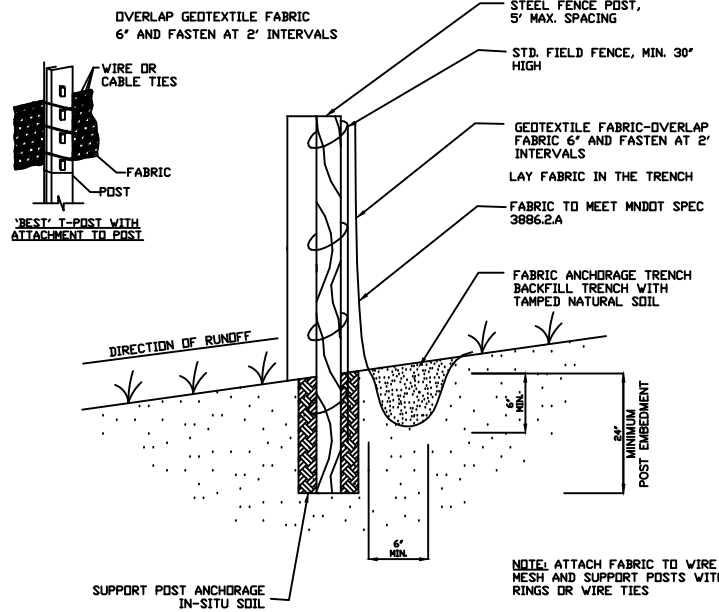
RESTORATION NOTES
SHEET 09 OF 11

Plot Date: 02/15/2025
 Drawing Name: X:\Clients_Plan\1518_Cedar_Creek_Energy\0020_Connexus_Landfill_Solar\09_GIS\dwg\Sheet01518_0920_Site_Plan.dwg
 User: kdc
 Title Block: EOR Imperial CAD Template
 Title Block Image: xref\GSOC.jpg, 2019

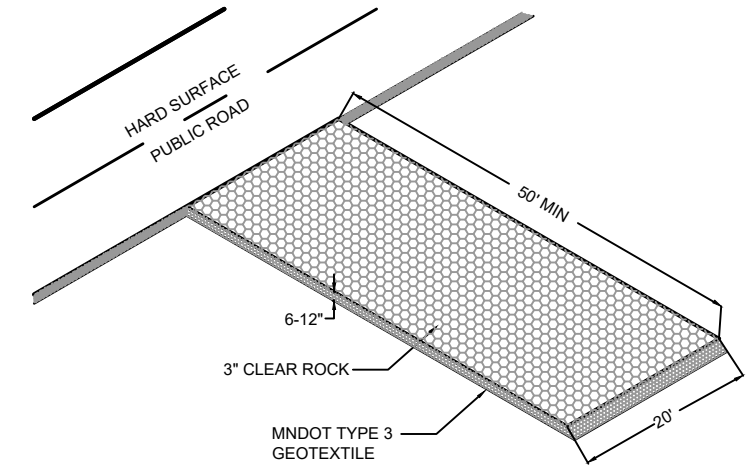


NOTES:

1. POSTS FOR VEHICULAR GATES SHALL BE NPS 3-1/2" NOM. I.D. AASHTO M181, 9.12 LBS./FT., 6'-0" LENGTH.
2. FRAMES FOR VEHICULAR GATES SHALL BE NPS 1-1/2" NOM. I.D. AASHTO M181, 2.72 LBS./FT.
3. CONTRACTOR TO PROVIDE KNOX BOX FOR KEY ACCESS BY MAINTENANCE PERSONNEL AND FIRST RESPONDERS.
4. GATE TO OPEN OUT AND HAVE POSTS FOR SECURING FENCE GATES IN OPEN POSITION.



NOTE: ATTACH FABRIC TO WIRE MESH AND SUPPORT POSTS WITH RINGS OR WIRE TIES



NOTE:
 - STABILIZED CONSTRUCTION ENTRANCE SHALL BE MAINTAINED FOR THE DURATION OF THE CONSTRUCTION PROCESS.
 - ROCK SHALL BE UNDERLINED WITH MNDOT TYPE 3 GEOTEXTILE FABRIC.

01 20' WIDE ACCESS GATE

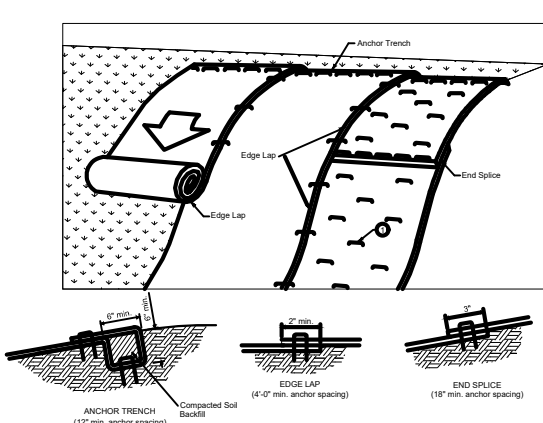
10 NOT TO SCALE

02 SILT FENCE

10 NOT TO SCALE

03 CONSTRUCTION ENTRANCE/EXIT

10 NOT TO SCALE



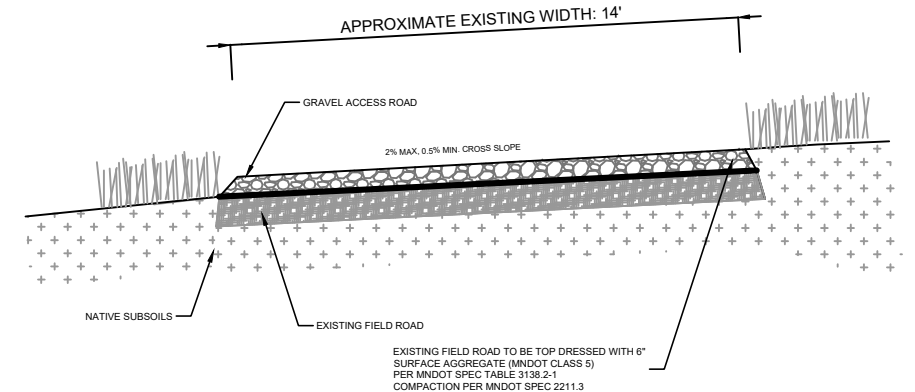
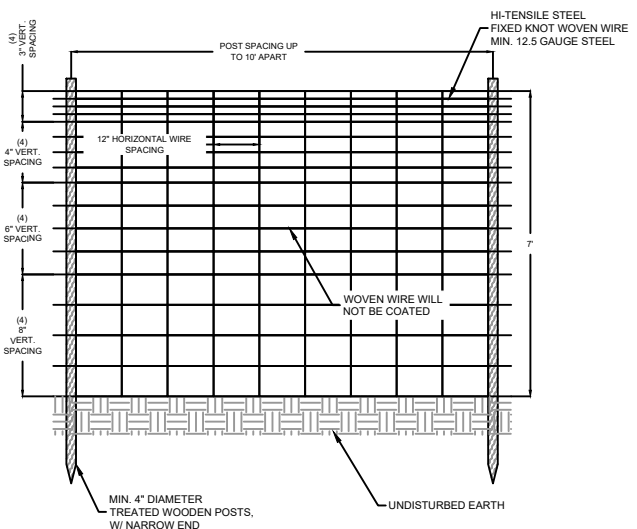
Max. Slope	Min. anchors
≤ 3:1	1.5/yd ²
2:1	2/yd ²
1:1	2.5/yd ²

NOTES:

1. SECURE BLANKET TO GROUND ACCORDING TO MANUFACTURER'S RECOMMENDED ANCHORING PATTERN AND MINIMUM SHOWN IN TABLE 1.
2. SPACE TOP ROW OF STAPLES AT 18 INCH, BOTTOM ROW AT 36 INCH CENTERS, AND ALL OTHERS AT 24 INCH CENTERS. APPROXIMATELY 30 STAPLES REQUIRED PER SQUARE (100 SQ.-FT.) OF EROSION CONTROL MAT.
3. WHERE EROSION GULLIES HAVE DEVELOPED IN BACKSLOPE, FILL WITH SOIL AND COMPACT PRIOR TO PLACEMENT OF EROSION CONTROL MAT.
4. 4 FEET MINIMUM TO 8 FEET MAXIMUM OR AS SPECIFIED. PLACE STAPLES THE SAME AS FOR SPECIAL DITCH CONTROL.
5. 4 FEET UNLESS SPECIFIED OTHERWISE FOR FORESLOPE PROTECTION.
6. IF EROSION RILL HAS DEVELOPED ADJACENT TO SHOULDER MATERIAL, FILL WITH SUITABLE SOIL AND COMPACT PRIOR TO PLACEMENT OF MAT.

NOTES:

1. VERTICAL SPACING MUST BE LARGEST AT THE GROUND SURFACE AND SMALLEST AT THE TOP OF THE FENCE TO ALLOW PASSAGE OF SMALL MAMMALS, REPTILES, AND OTHER WILDLIFE
2. MINIMUM VERTICAL WIRE SPACING AT THE BOTTOM OF THE FENCE SHALL BE 8 INCHES
3. DEPENDING ON SOILS, UTILIZE TREATED WOODEN POSTS DRIVEN INTO THE SOIL (NARROWER END INTO GROUND), AVOID THE USE OF CONCRETE FOOTINGS



04 ROLLED EROSION PREVENTION - CAT. 25

10 NOT TO SCALE

05 PERIMETER FENCE

10 NOT TO SCALE

06 ACCESS ROAD CROSS SECTION

10 NOT TO SCALE



I HEREBY CERTIFY THAT THIS PLAN, SPECIFICATION, OR REPORT WAS PREPARED BY ME OR UNDER MY DIRECT SUPERVISION AND THAT I AM A DULY LICENSED PROFESSIONAL ENGINEER UNDER THE LAWS OF THE STATE OF MINNESOTA.

Kyle D. Crawford
 KYLE D. CRAWFORD DATE: 02/18/2025 LICENSE #54906

DATE	NO.	DESCRIPTION
02/18/2025	1	IFPR - ISSUED FOR PERMIT REVIEW
03/10/2025	2	IFPR UPDATED PER CITY REVIEW COMMENTS
	3	
	4	
	5	
	6	

DESIGNED BY: ERK
 DRAWN BY: BMP
 CHECKED BY: KDC
 EOR JOB #1518-0020



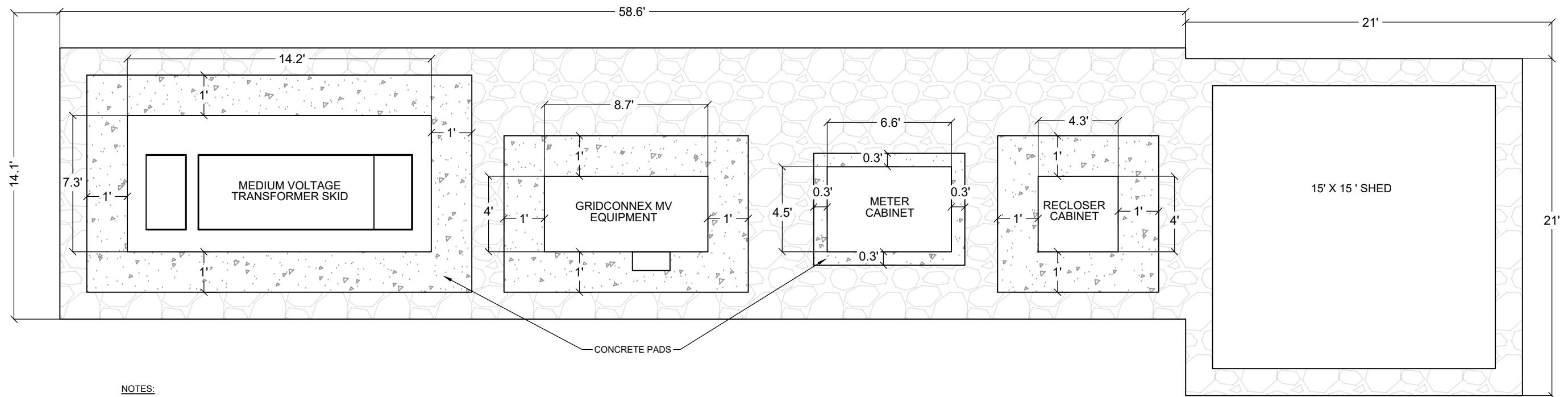
LANDFILL SOLAR
 RAMSEY, ANOKA COUNTY, MINNESOTA

CEDAR CREEK ENERGY RAMSEY, MINNESOTA, 55303

DETAILS SHEET 01

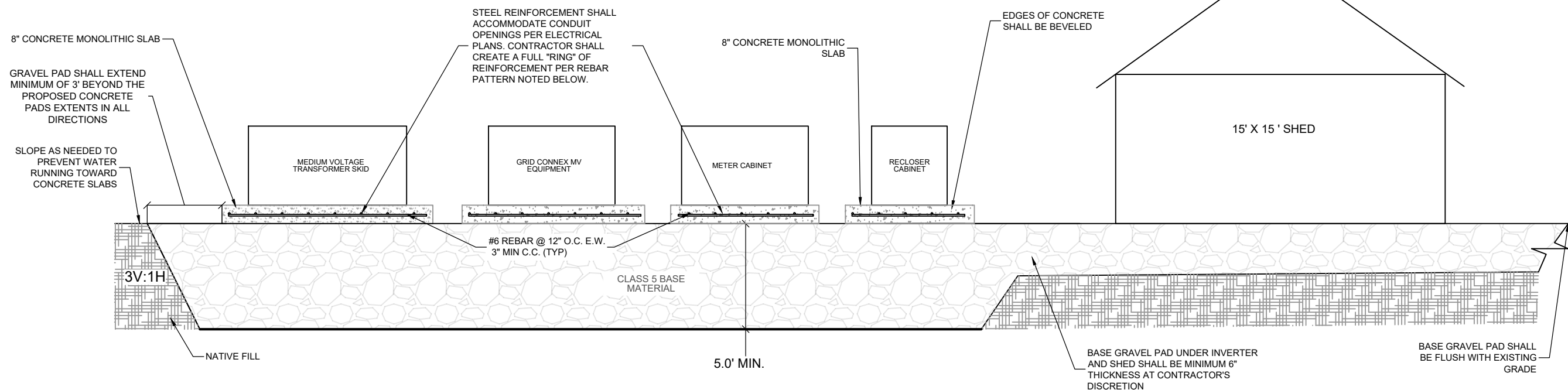
SHEET 10 OF 11

Plot Date: 03/08/2024
 Drawing Name: X:\Clients_Planets\1518_0014_Cedar_Creek_Energy\0014_CSG_CEF_Mat\1518-0014_ExistingConditions.dwg
 User: J.S. O'Neil
 Path: J:\Projects\1518_0014_Cedar_Creek_Energy\0014_CSG_CEF_Mat\1518-0014_ExistingConditions.dwg



NOTES:

1. SUBBASE SHALL BE CLASS 6 MATERIAL AND BACKFILLED IN LIFTS NO GREATER THAN 6" AND COMPACTED TO A MINIMUM OF 95% OF THE STANDARD PROCTOR MAXIMUM DRY DENSITY.
1. CONCRETE SHALL BE MNDOT MIX 3Y64 OR EQUIVALENT. CONTRACTOR SHALL BE RESPONSIBLE FOR ALL COMPACTION AND CONCRETE TESTING TO ENSURE COMPLIANCE WITH DESIGN.
2. ALL ELECTRICAL CONNECTIONS, CONDUIT, WINDOWS, METERS, TRANSFORMERS AND OTHER ELECTRICAL EQUIPMENT SHALL BE INSTALLED PER ELECTRICAL PLANS.
3. CONTRACTOR MAY USE ADDITIVES OR POLYMERS (HIGH-EARLY, E.G.) TO SHORTEN CURE TIME, BUT MUST ENSURE FULL STRUCTURAL STRENGTH IS MAINTAINED.



01 EQUIPMENT PAD
11 NOT TO SCALE

EOR water ecology community
EMMONS & OLIVIER RESOURCES, INC.
1919 UNIV. AVE. W. #300 ST. PAUL, MN
TEL: 651.770.8448 WWW.EORINC.COM

I HEREBY CERTIFY THAT THIS PLAN, SPECIFICATION, OR REPORT WAS PREPARED BY ME OR UNDER MY DIRECT SUPERVISION AND THAT I AM A DULY LICENSED PROFESSIONAL ENGINEER UNDER THE LAWS OF THE STATE OF MINNESOTA.

Kyle D. Crawford
KYLE D. CRAWFORD DATE: 02/18/2025 LICENSE #54906

DATE	NO.	DESCRIPTION
02/18/2025	1	IFPR - ISSUED FOR PERMIT REVIEW
03/10/2025	2	IFPR UPDATED PER CITY REVIEW COMMENTS
	3	
	4	
	5	
	6	

DESIGNED BY: ERK
DRAWN BY: BMP
CHECKED BY: KDC
EOR JOB #1518-0020



LANDFILL SOLAR
RAMSEY, ANOKA COUNTY, MINNESOTA
CEDAR CREEK ENERGY RAMSEY, MINNESOTA, 55303

DETAILS SHEET 02
SHEET 11 OF 11

Plot Date: 03/08/2024
 Drawing Name: X:\Clients_Planets\1518_Cedar_Creek_Energy\0014_CSG_CEF_Munkab\09_GN\Sub\g\Sheets\1518-0014_ExistingConditions.dwg
 User: JLS\JLS\JLS_SurveyData