

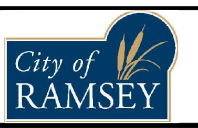
STORM SEWER TABULATION													
STRUCTURE	STATION, OFFSET	STRUCTURE	CASTING	RIM	INVERT	SUMP	BUILD	INVERT	PIPE	PIPE	PIPE	PIPE	STRUCTURE
		SIZE DIA. (IN.)	TYPE	ELEV.	ELEV.	ELEV.	HEIGHT	DIRECTION	DIA. (IN.)	MATERIAL	GRADE (%)	LENGTH (LF)	CONNECTED TO:
FES1	5+44.51, 28.370 R	15	TG	N/A	868.40	N/A	N/A	NW	15	RCP	0.30	13	CBMH1
FES2	5+42.36, 27.479 L	15	TG	N/A	868.58	N/A	N/A	SW	15	RCP	-0.30	11	CBMH2
FES3	18+43.76, 33.171 R	15	TG	N/A	870.50	N/A	N/A	NW	15	RCP	1.00	17	CBMH3
FES4	18+42.12, 38.527 L	18	TG	N/A	869.55	N/A	N/A	SW	18	RCP	-1.00	22	CBMH5
FES5	4+12.09, 97.467 L	24	TG	N/A	874.00	N/A	N/A	SW	24	RCP	2.50	78	CBMH7
FES6	4+61.64, 56.660 L	15	TG	N/A	871.40	N/A	N/A	SW	15	RCP	4.30	41	CBMH26
CBMH1	5+35.55, 11.792 R	48	R-3501TB	872.42	868.46	864.46	7.96	SE	15	RCP	-0.30	13	FES1
					868.46			N	15	RCP	0.30	24	CBMH2
CBMH2	5+35.45, 11.792 L	48	R-3501TB	872.42	868.53	868.53	3.89	S	15	RCP	-0.30	24	CBMH1
					868.53			NE	15	RCP	0.30	11	FES2
CBMH3	18+34.44, 11.792 R	48	R-3501TB	873.92	870.27	870.17	3.75	S	15	RCP	1.00	23	FES3
					870.17			N	18	RCP	-1.00	24	CBMH5
CB4	19+70, 11.792 R	2X3	R-3501TB	876.67	873.21	873.21	3.46	N	15	RCP	-2.00	24	CBMH6
CBMH5	18+34.44, 11.792 L	48	R-3501TB	873.91	869.83	865.83	8.08	N	18	RCP	-1.00	28	FES4
					869.93			E	18	RCP	2.00	136	CBMH6
					869.93			S	18	RCP	1.00	24	CBMH3
CBMH6	19+70, 11.792 L	48	R-3501TB	876.67	872.64	872.64	4.03	W	18	RCP	-2.00	136	CBMH5
					872.74			S	15	RCP	2.00	24	CB4
CBMH7	4+14.71, 14.030 L	72	R-3501TB	880.62	876.09	872.09	8.53	NE	24	RCP	-2.50	78	FES5
					876.19			NW	15	RCP	5.00	28	CB8
					876.19			SW	18	RCP	2.00	97	CBMH9
					876.19			SE	21	RCP	1.59	94	CBMH18
CB8	4+12.71, 14.079 R	2X3	R-3501TB	880.63	877.60	877.60	3.03	NE	15	RCP	-5.00	28	CBMH7
CBMH9	3+25.00, 14.042 L	60	R-3501TB	881.49	878.12	878.12	3.37	SE	18	RCP	-2.00	97	CBMH7
					878.22			S	15	RCP	1.00	28	CB10
					878.22			W	18	RCP	2.00	210	CBMH11
CB10	3+25.00, 14.042 R	2X3	R-3501TB	881.49	878.50	878.50	2.99	N	15	RCP	-1.00	28	CBMH9
CBMH11	1+15.00, 14.042 L	48	R-3501TB	885.86	882.43	882.43	3.43	E	18	RCP	-2.00	210	CBMH9
					882.53			S	15	RCP	1.00	28	CBMH12
CBMH12	1+15.00, 14.042 R	48	R-3501TB	885.86	882.81	882.81	3.05	N	15	RCP	-1.00	28	CBMH11
					882.91			W	15	RCP	1.00	129	CBMH13
CBMH13	1+82.10, 14.042 R	48	R-3501TB	887.53	884.20	884.20	3.33	E	15	RCP	-1.00	129	CBMH12
					884.30			S	15	RCP	0.50	227	CBMH14
CBMH14	4+09.54, 14.042 R	48	R-3501TB	888.50	885.44	885.44	3.06	N	15	RCP	-0.50	227	CBMH13
					885.54			E	15	RCP	1.00	28	CB15
					885.54			S	15	RCP	0.50	165	CBMH16
CB15	4+09.75, 14.042 L	2X3	R-3501TB	888.50	885.82	885.82	2.68	W	15	RCP	-1.00	28	CBMH14
CBMH16	5+75.00, 14.042 R	48	R-3246AL	889.22	886.36	886.36	2.86	N	15	RCP	-0.50	165	CBMH14
					886.46			E	15	RCP	0.50	28	CB17
CB17	5+75.00, 14.042 L	2X3	R-3501TB	889.22	886.60	886.60	2.62	W	15	RCP	-0.50	28	CBMH16
CBMH18	5+00.00, 14.042 L	60	R-3501TB	881.05	877.68	877.68	3.37	NW	21	RCP	-1.59	84	CBMH7
					877.78			W	15	RCP	1.00	28	CB19
					877.78			S	18	RCP	1.00	76	CBMH20
CB19	5+00.00, 14.042 R	2X3	R-3501TB	881.05	878.06	878.06	2.99	E	15	RCP	-1.00	28	CBMH18
CBMH20	5+75.92, 14.042 L	48	R-3246AL	881.50	878.54	878.54	2.96	N	18	RCP	-1.00	76	CBMH18
					878.64			W	15	RCP	1.00	28	CB21
					878.64			S	18	RCP	0.50	149	CBMH22
CB21	5+75.92, 14.042 R	2X3	R-3501TB	881.50	878.92	878.92	2.58	E	15	RCP	-1.00	28	CBMH20
CBMH22	7+25.00, 14.042 L	48	R-3501TB	882.39	879.39	879.39	3.00	N	18	RCP	-0.50	149	CBMH20
					879.49			W	15	RCP	1.00	28	CB23
					879.49			S	15	RCP	0.50	127	CBMH24
CB23	7+25.00, 14.042 R	2X3	R-3501TB	882.39	879.77	879.77	2.62	E	15	RCP	-1.00	28	CBMH22
CBMH24	8+51.54, 14.042 L	48	R-3501TB	883.15	880.12	880.12	3.03	N	15	RCP	-0.50	127	CBMH22
					880.22			W	15	RCP	1.00	28	CB25
CB25	8+51.33, 14.042 R	2X3	R-3501TB	883.15	880.50	880.50	2.65	E	15	RCP	-1.00	28	CBMH24
CBMH26	4+75.00, 14.042 L	48	R-3501TB	877.47	873.42	869.42	8.06	NE	15	RCP	-4.30	41	FES6
					873.52			W	15	RCP	1.00	28	CBMH27
					873.52			S	15	RCP	0.50	135	CBMH28
CBMH27	4+75.00, 14.042 R	48	R-3501TB	877.47	873.80	873.80	3.68	E	15	RCP	-1.00	28	CBMH26
					873.90			N	15	RCP	3.00	8	CB30
CBMH28	6+10.00, 14.042 L	48	R-3501TB	878.53	874.19	874.19	4.34	N	15	RCP	-0.50	135	CBMH26
					874.29			W	15	RCP	1.00	28	CB29
CB29	6+10.00, 14.046 R	2X3	R-3501TB	878.53	874.57	874.57	3.96	E	15	RCP	-1.00	28	CBMH28
CB30	4+65.00, 14.033 R	2X3	R-3501TB	877.49	874.14	874.14	3.35	S	15	RCP	-3.00	8	CBMH27

DATE	REVISION
05/02/25	ADDED MANHOLE SUMPS

I hereby certify that this plan, specification, or report was prepared by me or under my direct supervision and that I am a duly Licensed Professional Engineer under the laws of the State of Minnesota

*Joe Feriancek*  
 JOE FERIANCEK  
 Date 03/17/25 Lic. No. 57095

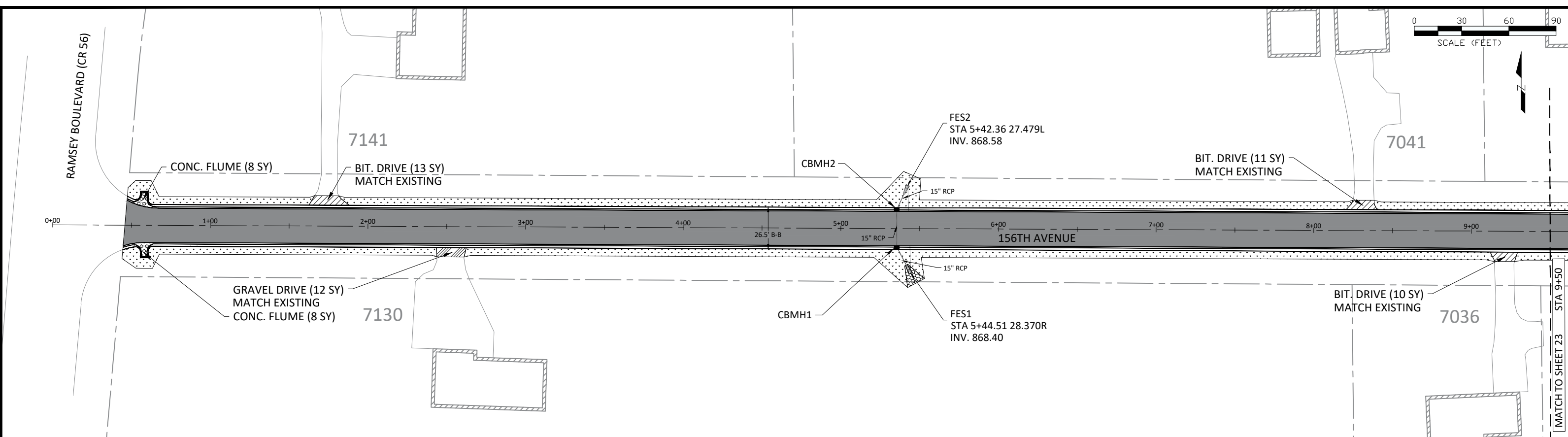
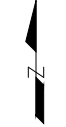
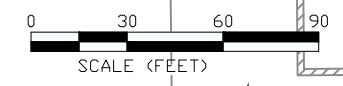
DESIGNED BY:	LWC
DRAWN BY:	LWC
CHECKED BY:	JJF



CITY OF RAMSEY  
 7550 SUNWOOD DRIVE  
 RAMSEY, MN 55303  
 (763) 427-1410 FAX (763) 433-9898

TABULATIONS

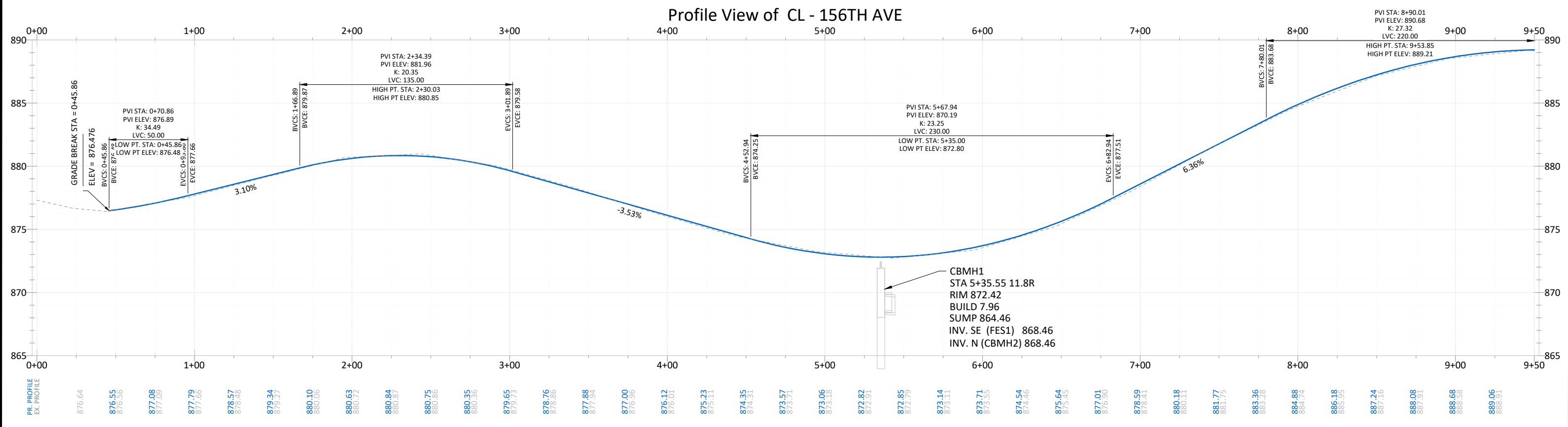
HIGH POINT STREET RECONSTRUCTIONS  
 CITY PROJECT NO. 25-05  
 CITY OF RAMSEY, MINNESOTA



<b>LEGEND</b>		DRIVEWAY - CONCRETE	RIPRAP CLASS III	EX. STORM SEWER	PR. FLARED END SECTION
BIT PAVEMENT	SEEDING AREA	DRIVEWAY - BITUMINOUS	CONCRETE FLUME	PR. STORM SEWER	
SURMOUNTABLE CURB & GUTTER	DRIVEWAY - GRAVEL	VALLEY GUTTER	PR. STORM CATCH BASIN	EASEMENT - DRAINAGE & UTILITY	
B618 CURB & GUTTER				LOT LINE	

**NOTE:**

1. STREET WIDTHS ARE 31' B-B UNLESS OTHERWISE NOTED.
2. TYPICAL SECTION SEE SHEET 05.
3. RESTORATION AREAS ARE SHOWN IN A GENERAL MANNER ONLY.
4. RESTORE ALL DISTURBED AREAS WITH 4" TOPSOIL, HYDROSEED, MNDOT SEED MIX 25-151, AND HYDRAULIC MATRIX TYPE MULCH UNLESS OTHERWISE NOTED.

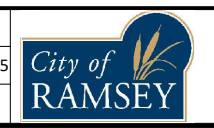


DATE	REVISION
05/02/25	ADDED MANHOLE SUMPS

I hereby certify that this plan, specification, or report was prepared by me or under my direct supervision and that I am a duly Licensed Professional Engineer under the laws of the State of Minnesota

JOE FERIANCEK  
 Date 03/17/25 Lic. No. 57095

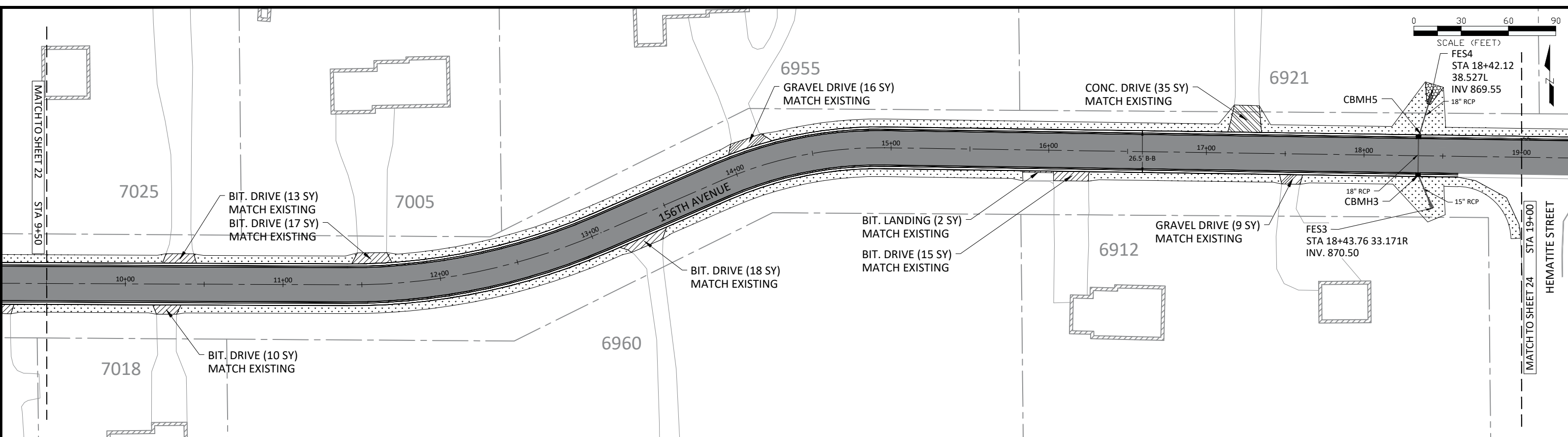
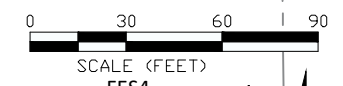
DESIGNED BY:	LWC
DRAWN BY:	LWC
CHECKED BY:	JJF



**CITY OF RAMSEY**  
 7550 SUNWOOD DRIVE  
 RAMSEY, MN 55303  
 (763) 427-1410 FAX (763) 433-9898

**STREET CONSTRUCTION**

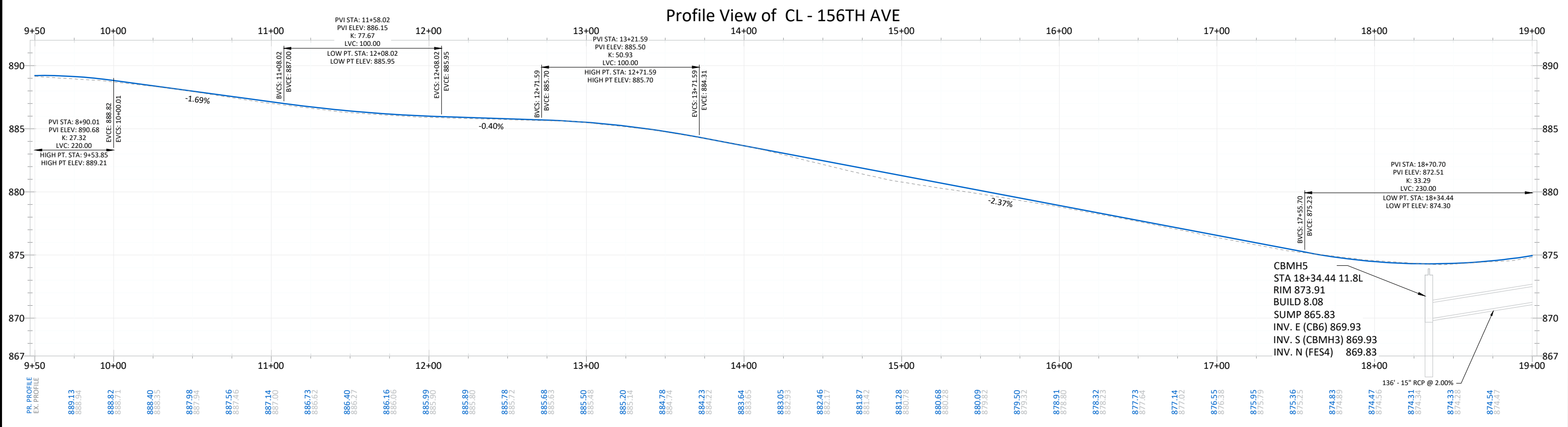
**HIGH POINT STREET RECONSTRUCTIONS**  
 CITY PROJECT NO. 25-05  
 CITY OF RAMSEY, MINNESOTA



**LEGEND**

	BIT PAVEMENT		DRIVEWAY - CONCRETE		RIPRAP CLASS III		EX. STORM SEWER		PR. FLARED END SECTION
	SURMOUNTABLE CURB & GUTTER		SEEDING AREA		CONCRETE FLUME		PR. STORM SEWER		EASEMENT - DRAINAGE & UTILITY
	B618 CURB & GUTTER		DRIVEWAY - BITUMINOUS		VALLEY GUTTER		LOT LINE		
			DRIVEWAY - GRAVEL		PR. STORM CATCH BASIN				

**NOTE:**  
 1. STREET WIDTHS ARE 31' B-B UNLESS OTHERWISE NOTED.  
 2. TYPICAL SECTION SEE SHEET 05.  
 3. RESTORATION AREAS ARE SHOWN IN A GENERAL MANNER ONLY.  
 4. RESTORE ALL DISTURBED AREAS WITH 4" TOPSOIL, HYDROSEED, MNDOT SEED MIX 25-151, AND HYDRAULIC MATRIX TYPE MULCH UNLESS OTHERWISE NOTED.



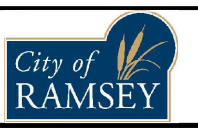
DATE	REVISION
05/02/25	ADDED MANHOLE SUMPS

I hereby certify that this plan, specification, or report was prepared by me or under my direct supervision and that I am a duly Licensed Professional Engineer under the laws of the State of Minnesota

*Joe Feriancek*  
 JOE FERIANCEK  
 Date: 03/17/25 Lic. No. 57095

DESIGNED BY: LWC  
 DRAWN BY: LWC  
 CHECKED BY: JJF

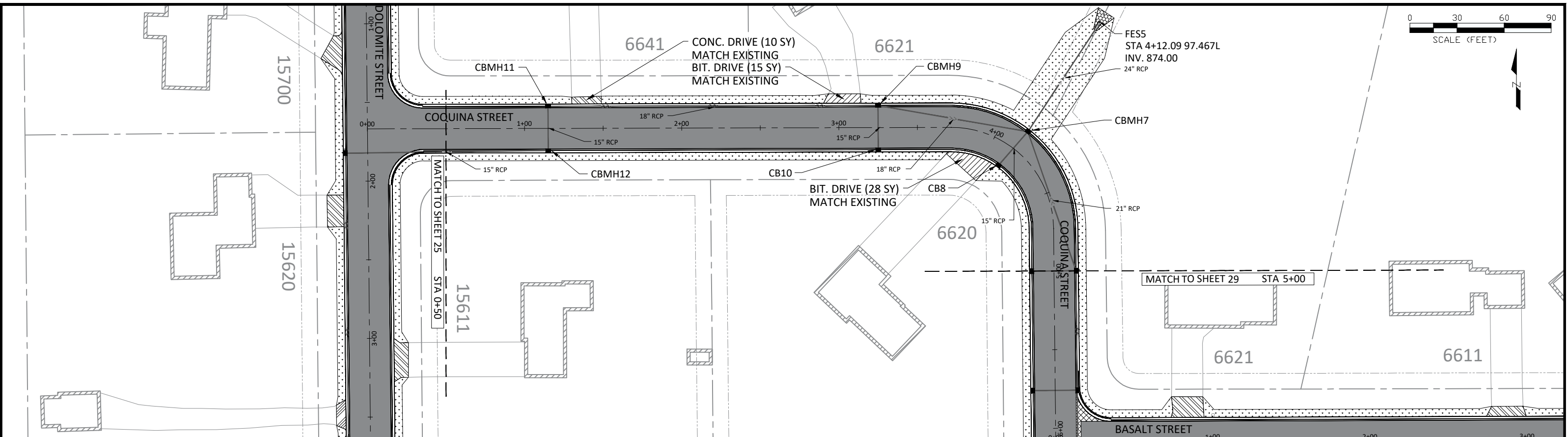
DATE: 03/17/25  
 FILE: 25-05



**CITY OF RAMSEY**  
 7550 SUNWOOD DRIVE  
 RAMSEY, MN 55303  
 (763) 427-1410 FAX (763) 433-9898

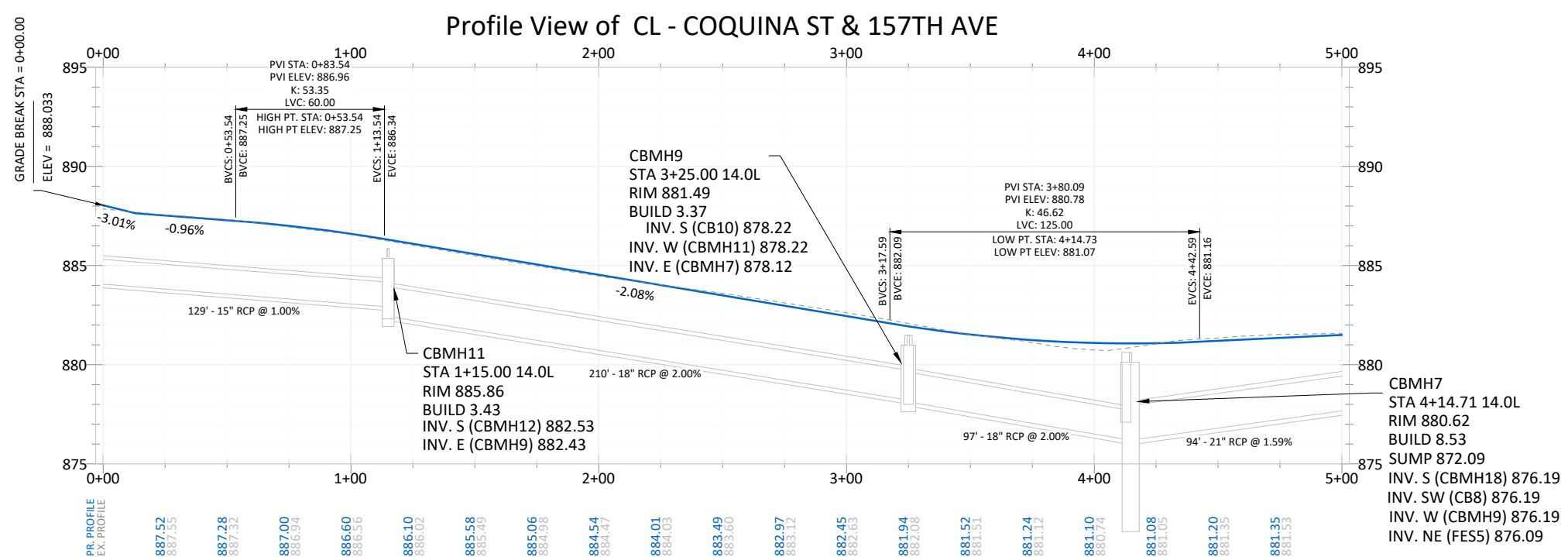
**STREET CONSTRUCTION**

**HIGH POINT STREET RECONSTRUCTIONS**  
 CITY PROJECT NO. 25-05  
 CITY OF RAMSEY, MINNESOTA



<b>LEGEND</b>		DRIVEWAY - CONCRETE	RIPRAP CLASS III	EX. STORM SEWER	PR. FLARED END SECTION
BIT PAVEMENT	SEEDING AREA	DRIVEWAY - BITUMINOUS	CONCRETE FLUME	PR. STORM SEWER	
SURMOUNTABLE CURB & GUTTER	DRIVEWAY - GRAVEL	VALLEY GUTTER	PR. STORM CATCH BASIN	EASEMENT - DRAINAGE & UTILITY	
B618 CURB & GUTTER				LOT LINE	

- NOTE:
1. STREET WIDTHS ARE 31' B-B UNLESS OTHERWISE NOTED.
  2. TYPICAL SECTION SEE SHEET 05.
  3. RESTORATION AREAS ARE SHOWN IN A GENERAL MANNER ONLY.
  4. RESTORE ALL DISTURBED AREAS WITH 4" TOPSOIL, HYDROSEED, MNDOT SEED MIX 25-151, AND HYDRAULIC MATRIX TYPE MULCH UNLESS OTHERWISE NOTED.



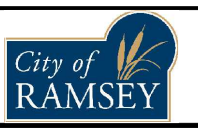
DATE	REVISION
05/02/25	ADDED MANHOLE SUMPS

I hereby certify that this plan, specification, or report was prepared by me or under my direct supervision and that I am a duly Licensed Professional Engineer under the laws of the State of Minnesota

JOE FERIANCEK  
 Date 03/17/25 Lic. No. 57095

DESIGNED BY: LWC  
 DRAWN BY: LWC  
 CHECKED BY: JIF

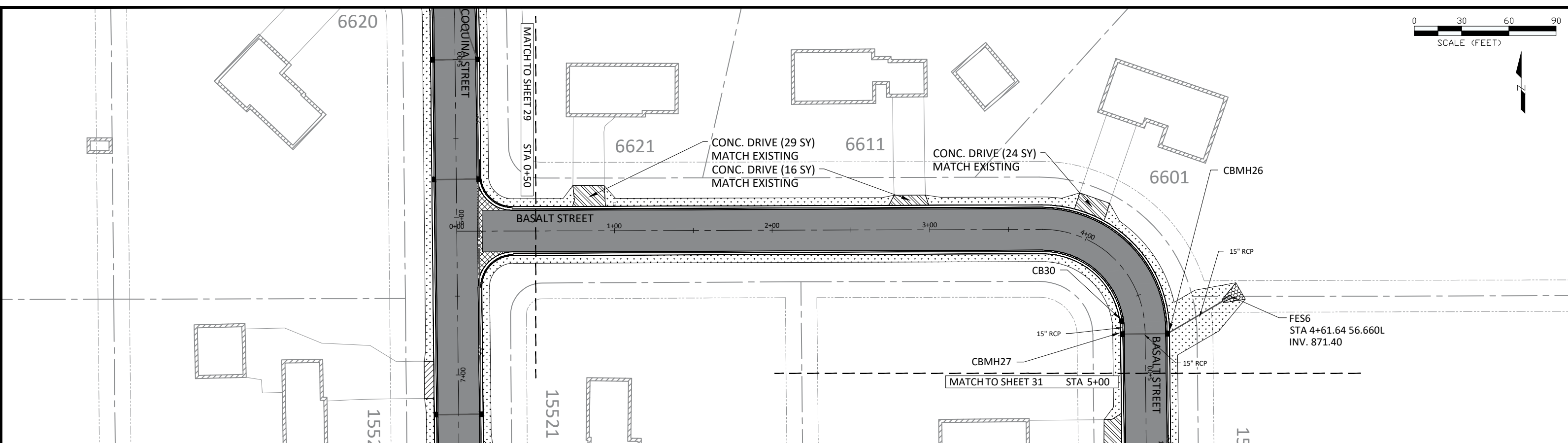
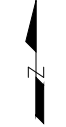
DATE: 03/17/25  
 FILE: 25-05



CITY OF RAMSEY  
 7550 SUNWOOD DRIVE  
 RAMSEY, MN 55303  
 (763) 427-1410 FAX (763) 433-9898

STREET CONSTRUCTION

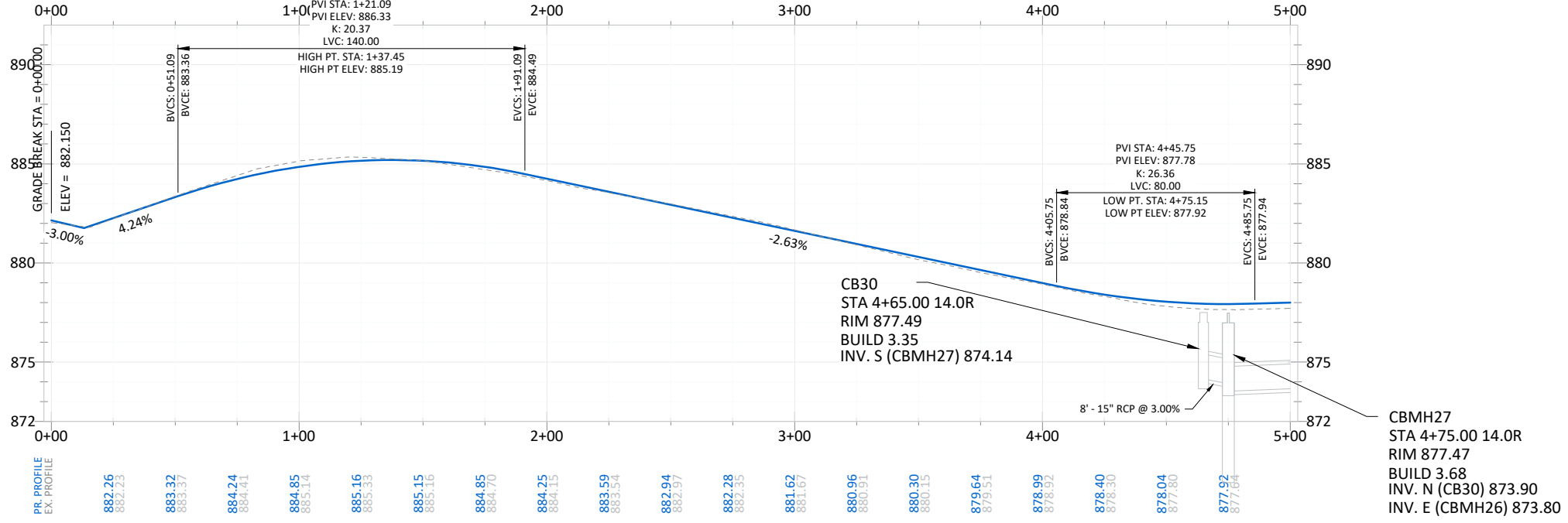
HIGH POINT STREET RECONSTRUCTIONS  
 CITY PROJECT NO. 25-05  
 CITY OF RAMSEY, MINNESOTA



LEGEND	
	BIT PAVEMENT
	SURMOUNTABLE CURB & GUTTER
	B618 CURB & GUTTER
	DRIVEWAY - CONCRETE
	SEEDING AREA
	DRIVEWAY - BITUMINOUS
	DRIVEWAY - GRAVEL
	RIPRAP CLASS III
	CONCRETE FLUME
	VALLEY GUTTER
	PR. STORM CATCH BASIN
	EX. STORM SEWER
	PR. STORM SEWER
	EASEMENT - DRAINAGE & UTILITY
	LOT LINE
	PR. FLARED END SECTION

NOTE:  
 1. STREET WIDTHS ARE 31' B-B UNLESS OTHERWISE NOTED.  
 2. TYPICAL SECTION SEE SHEET 05.  
 3. RESTORATION AREAS ARE SHOWN IN A GENERAL MANNER ONLY.  
 4. RESTORE ALL DISTURBED AREAS WITH 4" TOPSOIL, HYDROSEED, MNDOT SEED MIX 25-151, AND HYDRAULIC MATRIX TYPE MULCH UNLESS OTHERWISE NOTED.

Profile View of CL - BASALT ST & 156TH AVE

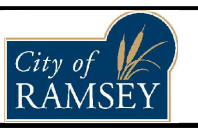


DATE	REVISION
05/02/25	ADDED MANHOLE SUMPS

I hereby certify that this plan, specification, or report was prepared by me or under my direct supervision and that I am a duly Licensed Professional Engineer under the laws of the State of Minnesota

*Joe Feriancek*  
 JOE FERIANCEK  
 Date 03/17/25 Lic. No. 57095

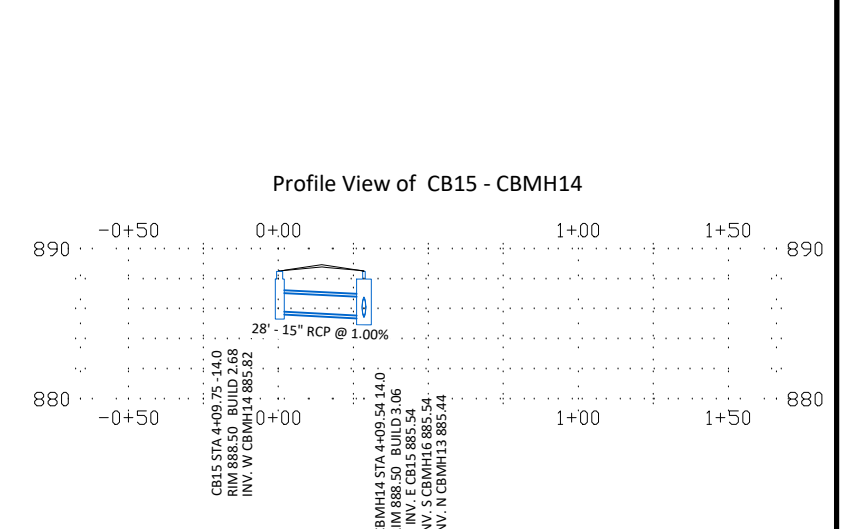
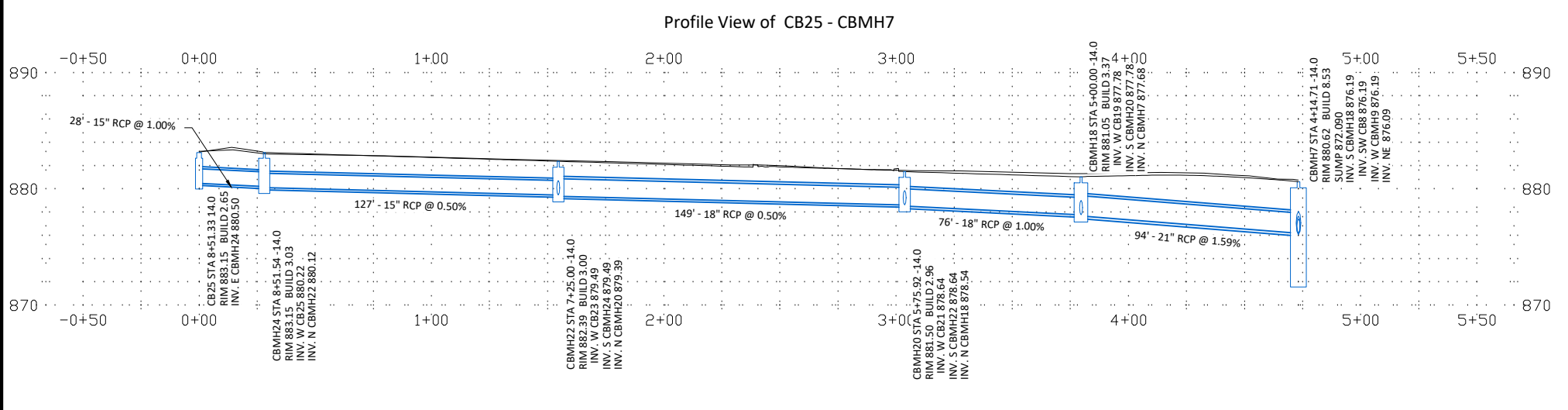
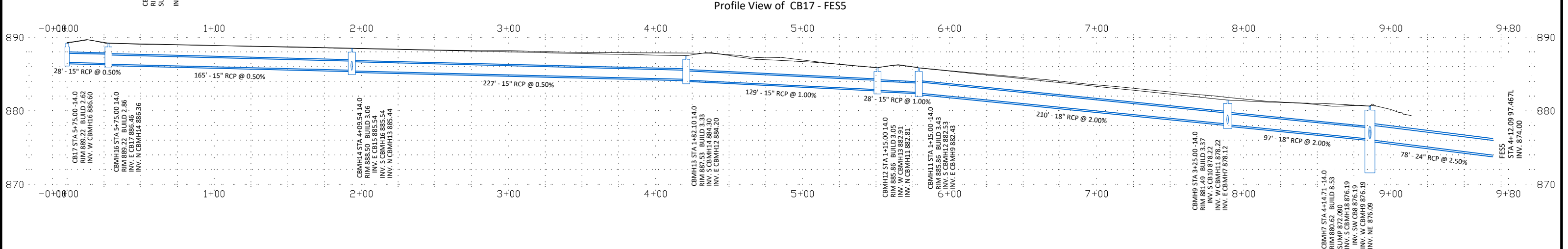
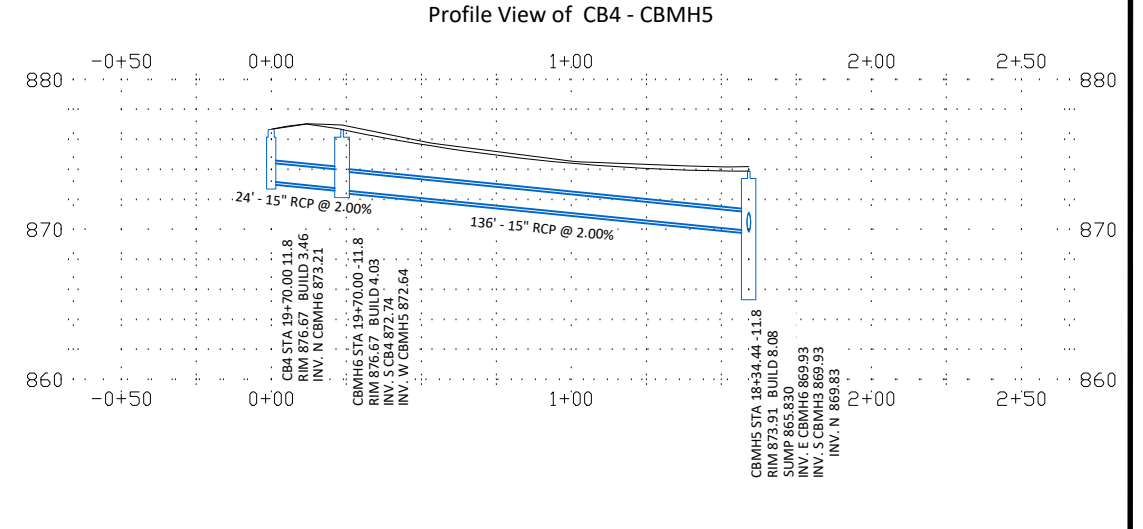
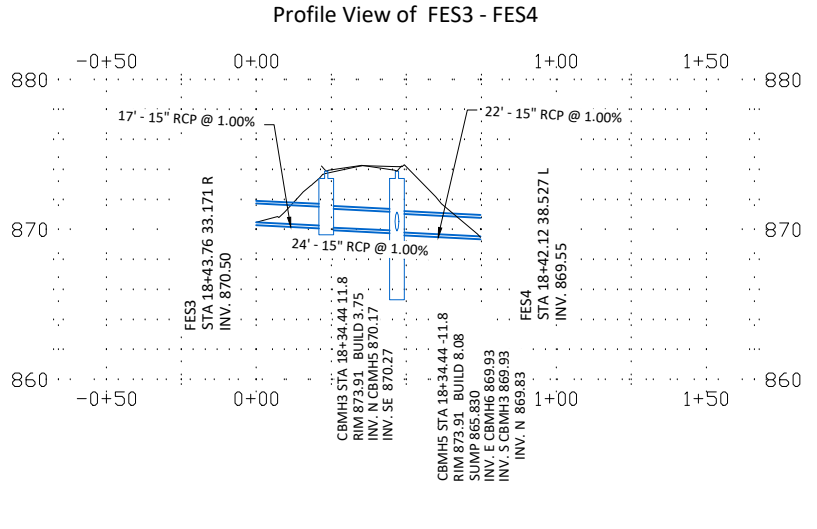
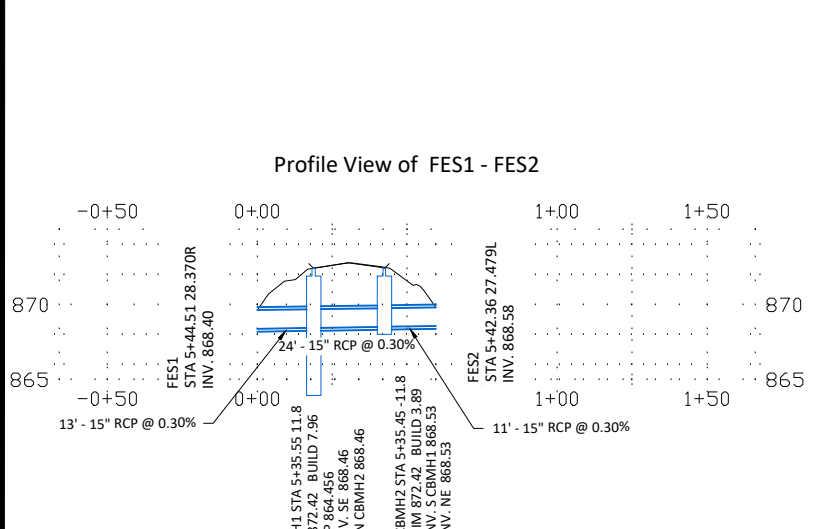
DESIGNED BY:	LWC
DRAWN BY:	LWC
CHECKED BY:	JJF



CITY OF RAMSEY  
 7550 SUNWOOD DRIVE  
 RAMSEY, MN 55303  
 (763) 427-1410 FAX (763) 433-9898

STREET CONSTRUCTION

HIGH POINT STREET RECONSTRUCTIONS  
 CITY PROJECT NO. 25-05  
 CITY OF RAMSEY, MINNESOTA

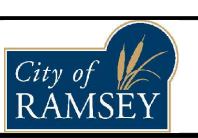


DATE	REVISION
05/02/25	ADDED MANHOLE SUMPS

I hereby certify that this plan, specification, or report was prepared by me or under my direct supervision and that I am a duly Licensed Professional Engineer under the laws of the State of Minnesota

*Joe Feriancek*  
JOE FERIANCEK  
Date 03/17/25 Lic. No. 57095

DESIGNED BY:	LWC
DRAWN BY:	LWC
CHECKED BY:	JJF

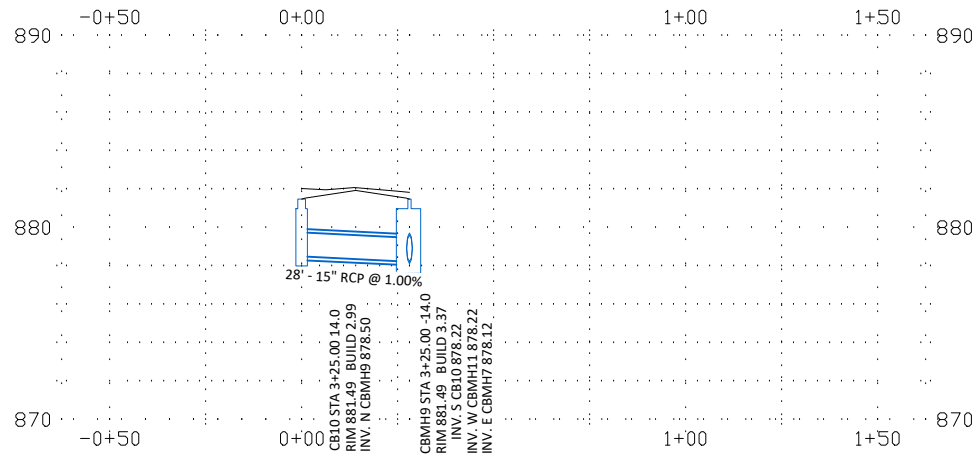


CITY OF RAMSEY  
7550 SUNWOOD DRIVE  
RAMSEY, MN 55303  
(763) 427-1410 FAX (763) 433-9898

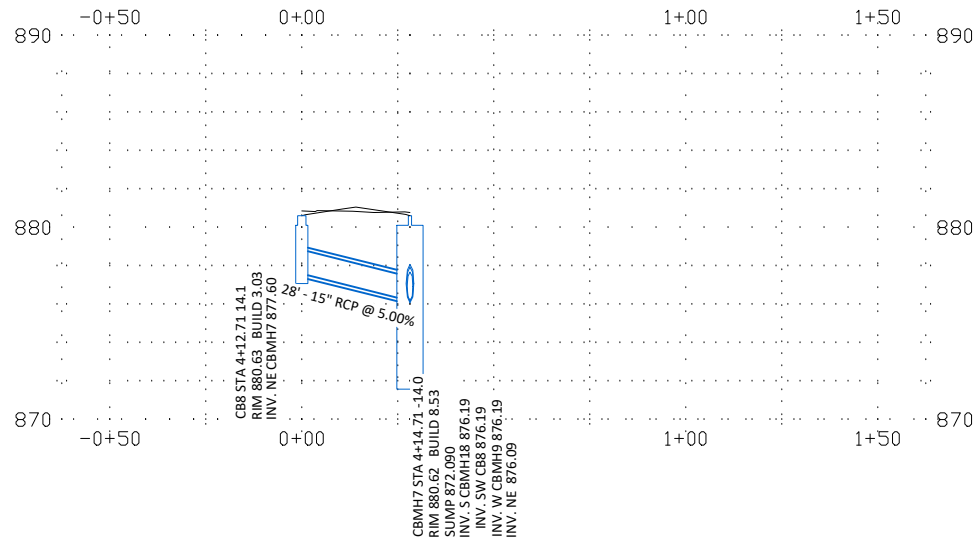
STORM SEWER PROFILES

HIGH POINT STREET RECONSTRUCTIONS  
CITY PROJECT NO. 25-05  
CITY OF RAMSEY, MINNESOTA

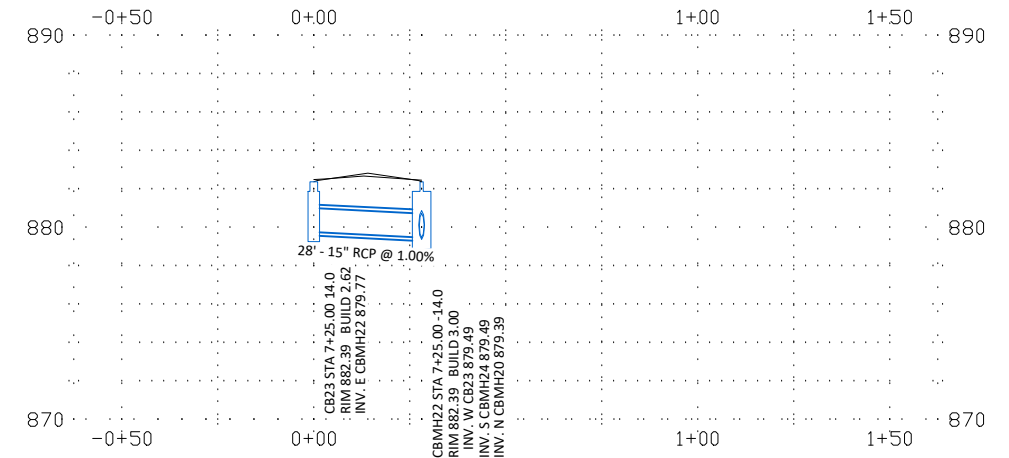
Profile View of CB10 - CBMH9



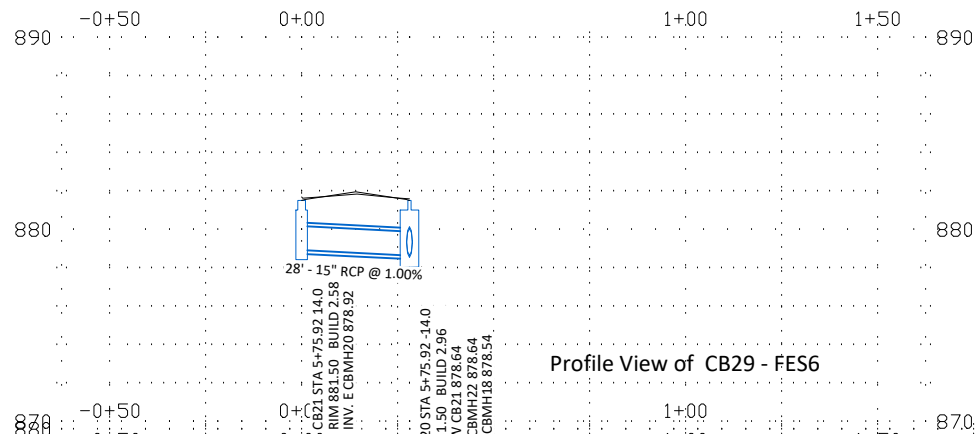
Profile View of CB8 - CBMH7



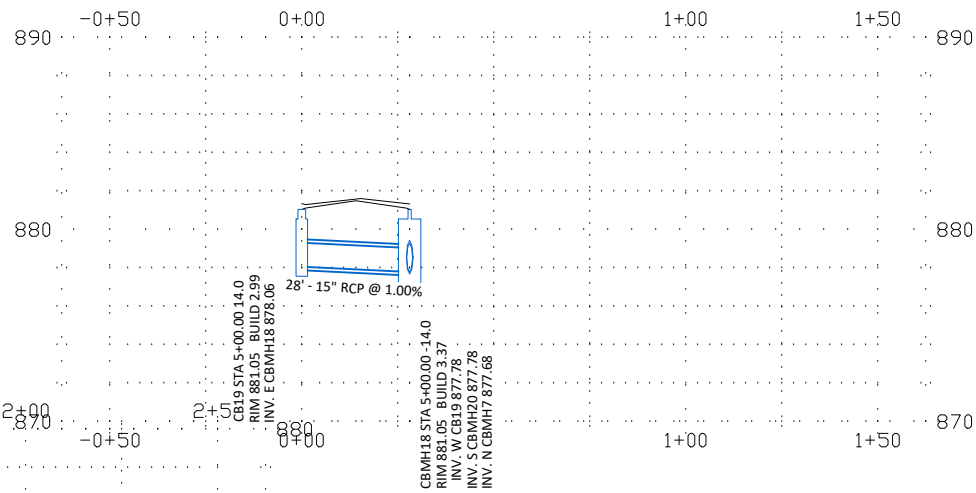
Profile View of CB23 - CBMH22



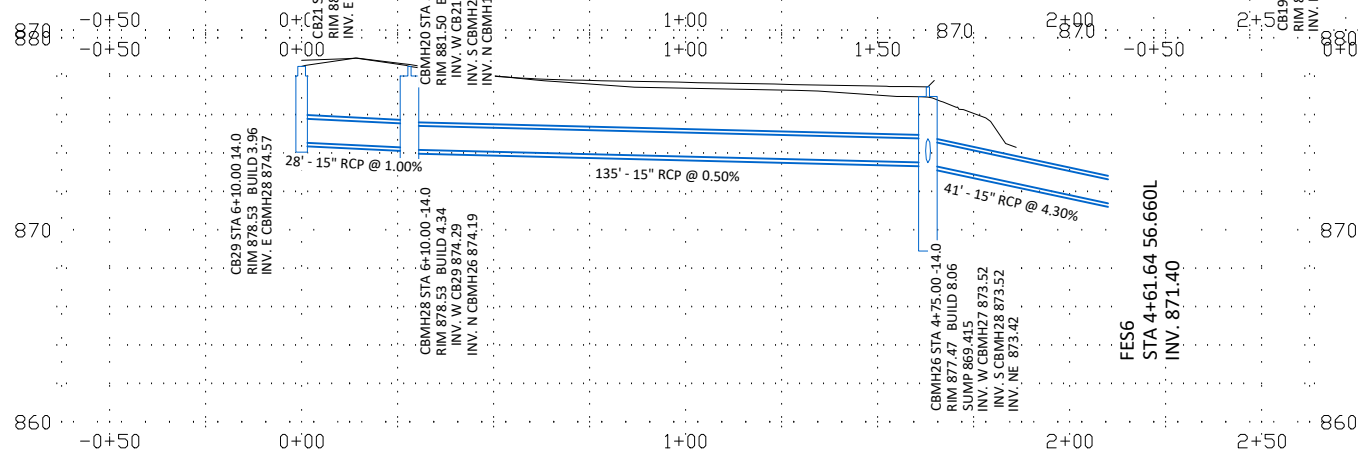
Profile View of CB21 - CBMH20



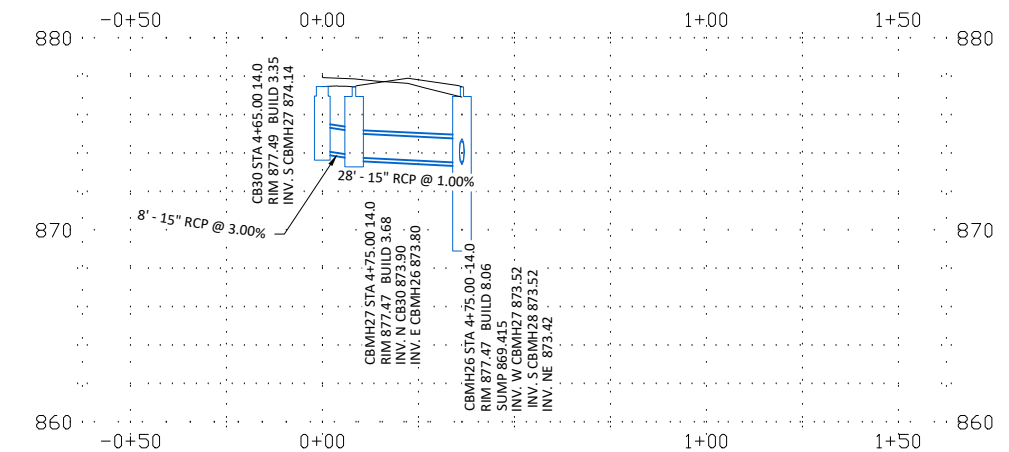
Profile View of CB19 - CBMH18



Profile View of CB29 - FES6



Profile View of CB30 - CBMH26



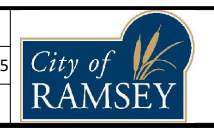
DATE	REVISION
05/02/25	ADDED MANHOLE SUMPS

I hereby certify that this plan, specification, or report was prepared by me or under my direct supervision and that I am a duly Licensed Professional Engineer under the laws of the State of Minnesota.

*Joe Feriancek*  
 JOE FERIANCEK  
 Date 03/17/25 Lic. No. 57095

DESIGNED BY:	LWC
DRAWN BY:	LWC
CHECKED BY:	JJF

DATE:	03/17/25
FILE:	25-05



CITY OF RAMSEY  
 7550 SUNWOOD DRIVE  
 RAMSEY, MN 55303  
 (763) 427-1410 FAX (763) 433-9898

STORM SEWER PROFILES

HIGH POINT STREET RECONSTRUCTIONS  
 CITY PROJECT NO. 25-05  
 CITY OF RAMSEY, MINNESOTA