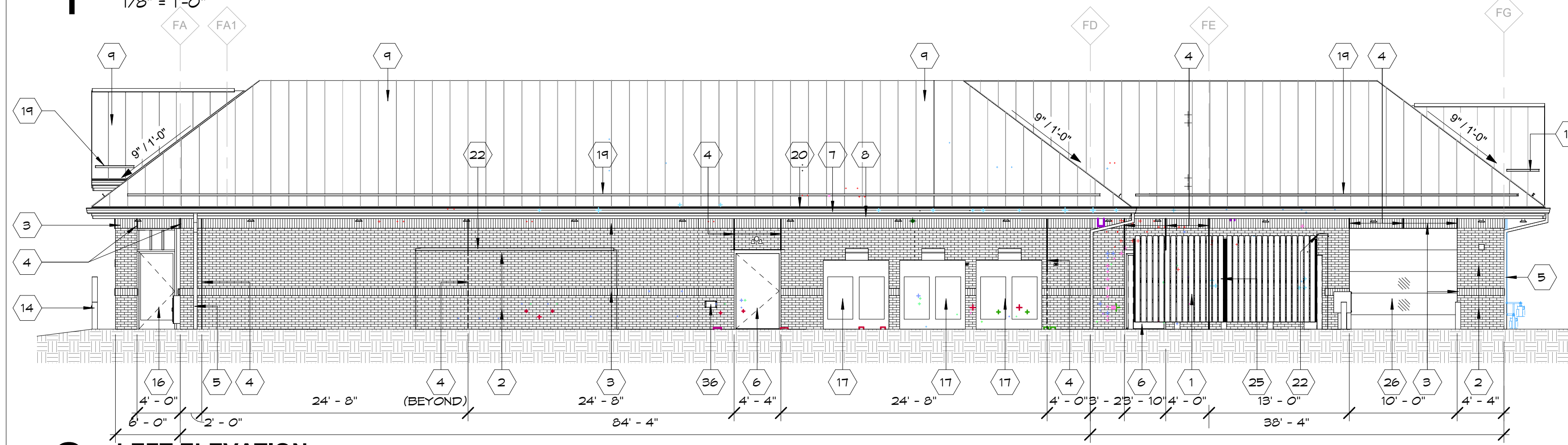


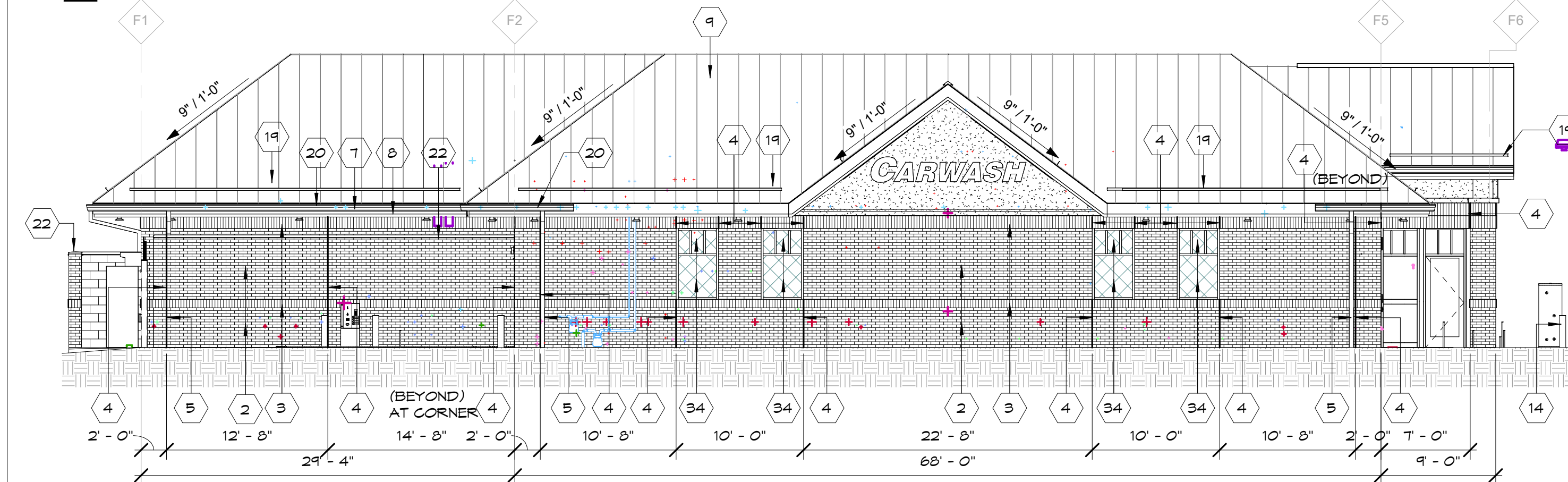
1 FRONT ELEVATION

1/8" = 1'-0"



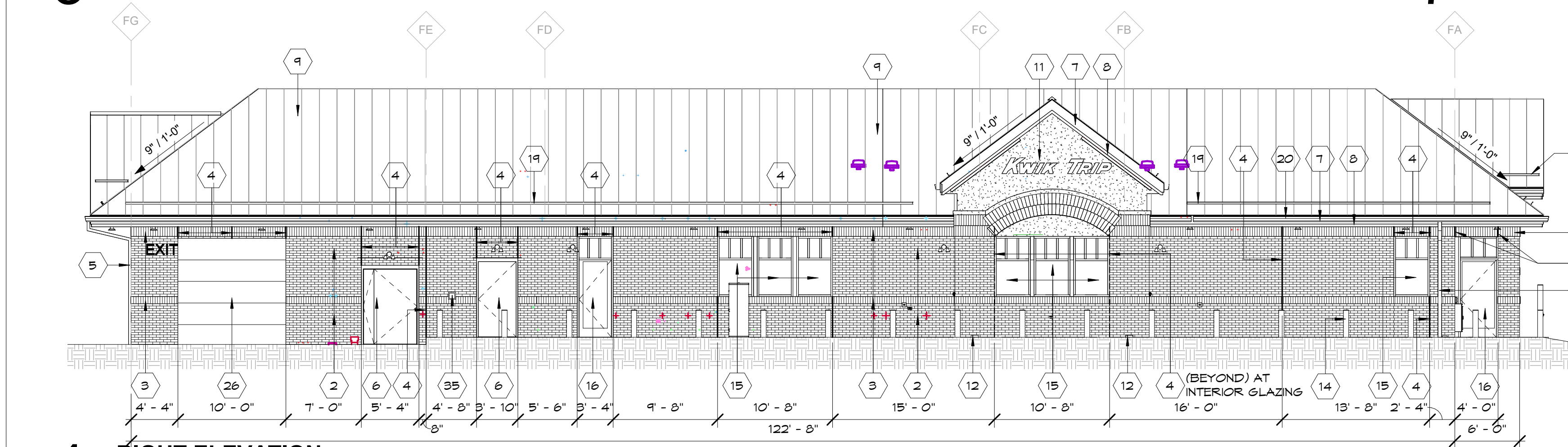
2 LEFT ELEVATION

1/8" = 1'-0"



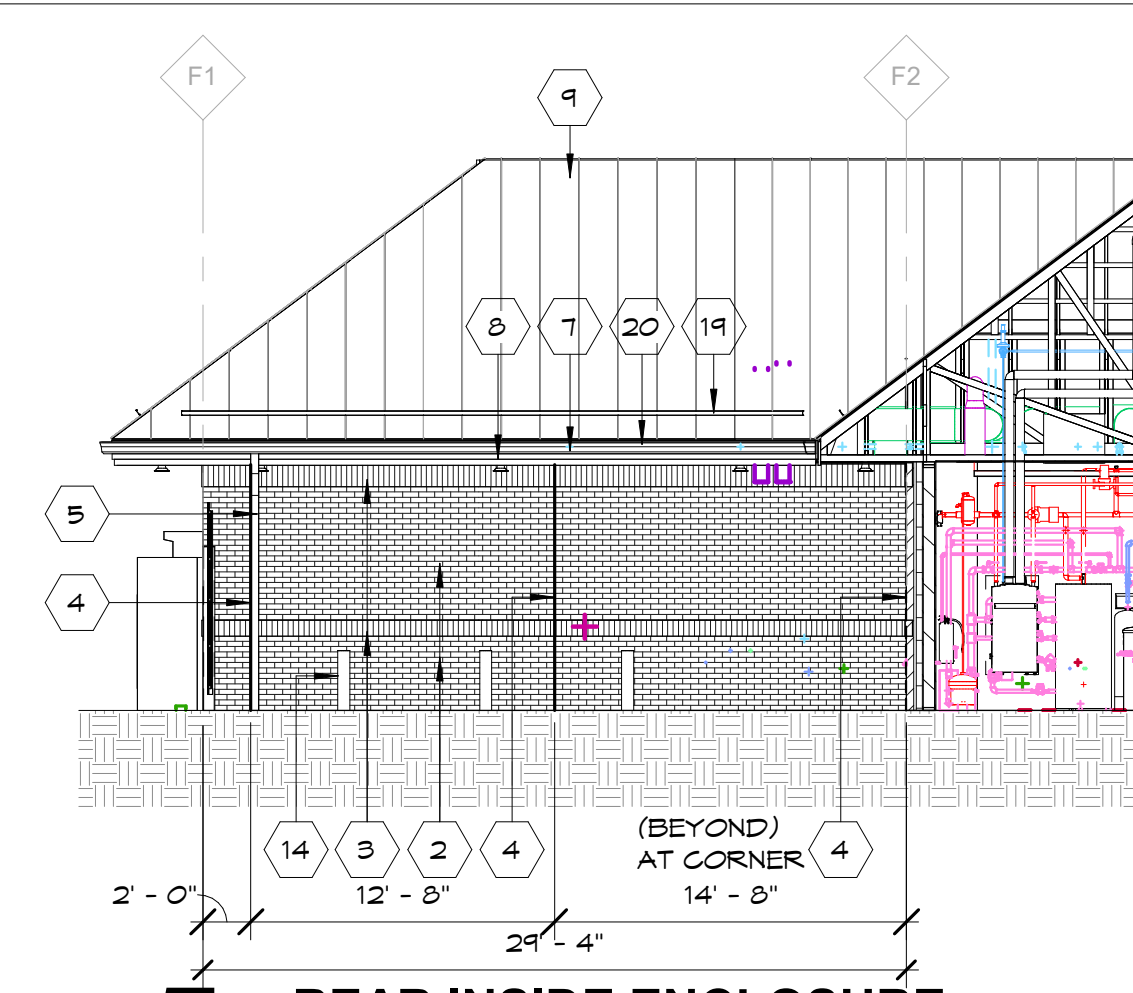
3 REAR ELEVATION

1/8" = 1'-0"



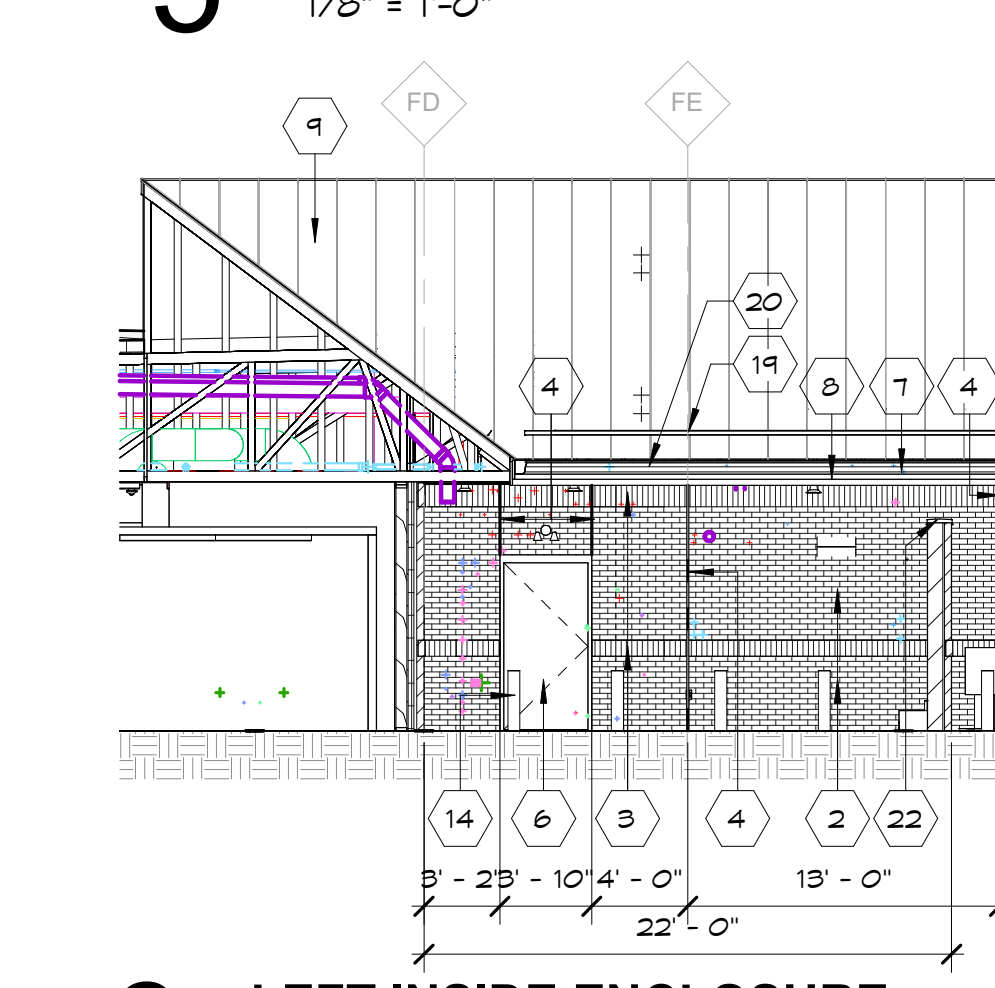
4 RIGHT ELEVATION

1/8" = 1'-0"



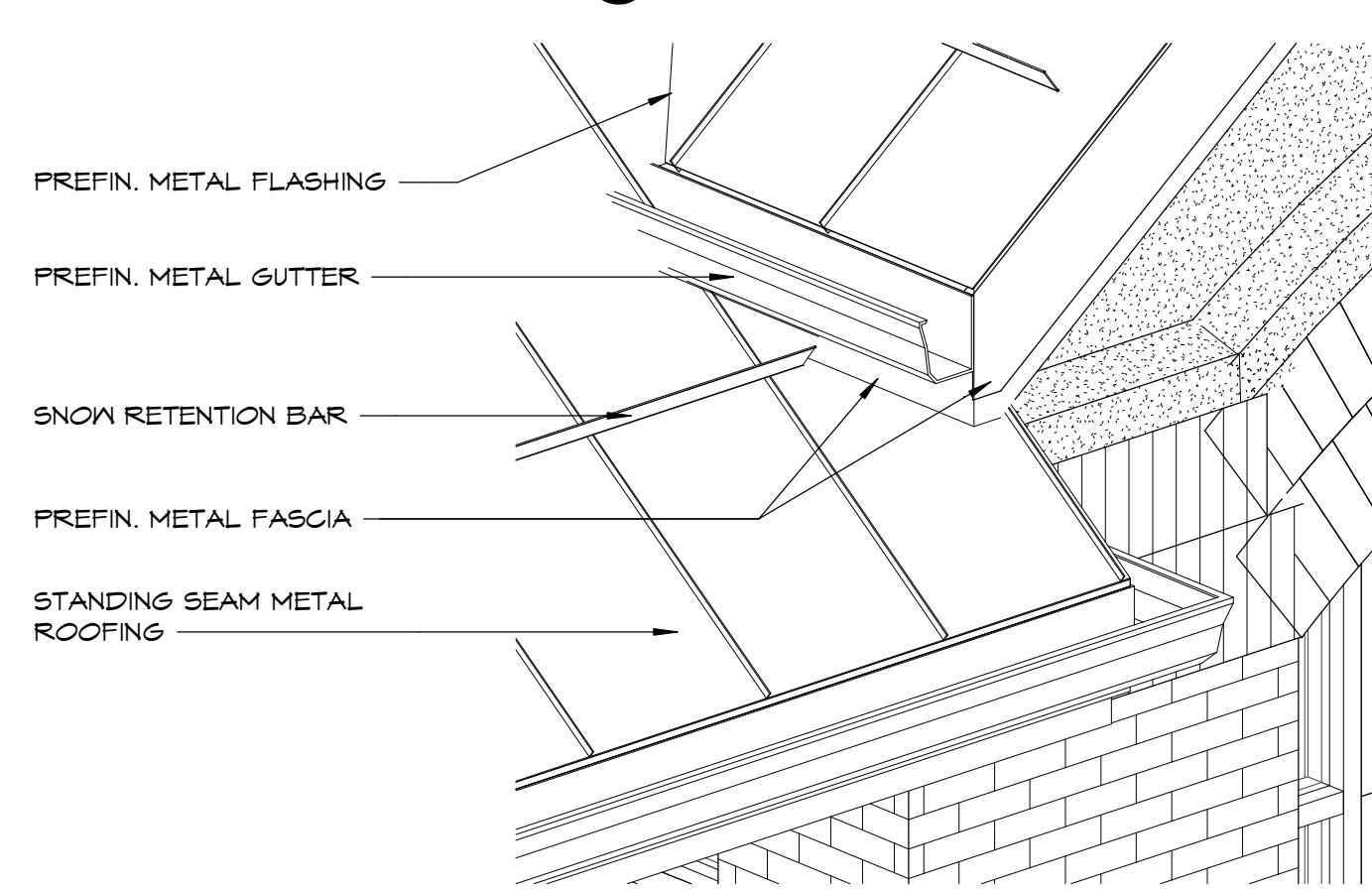
5 REAR INSIDE ENCLOSURE

1/8" = 1'-0"

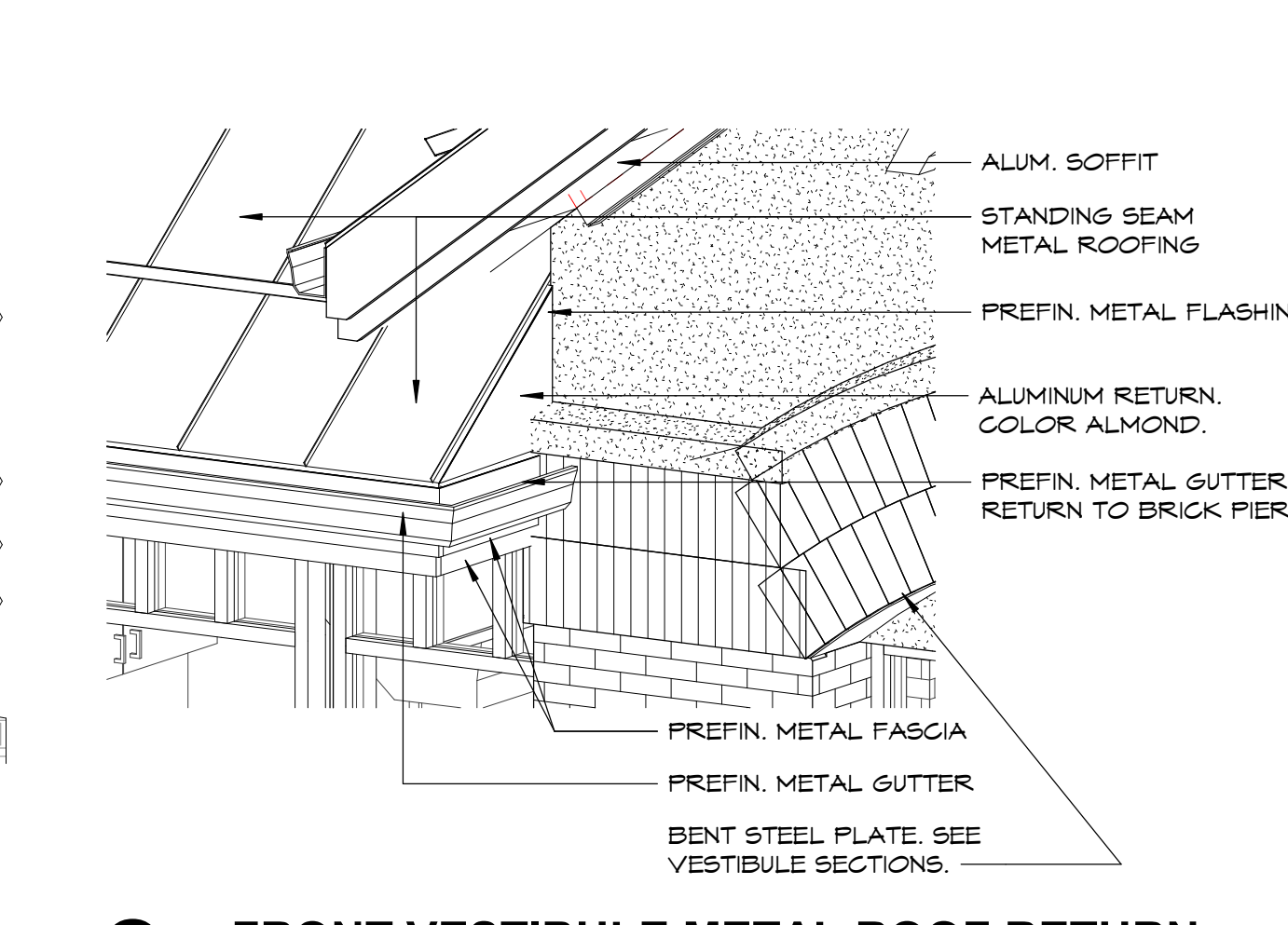


6 LEFT INSIDE ENCLOSURE

1/8" = 1'-0"



7 VESTIBULE EAVE TO ROOF FLASHING DETAIL



8 FRONT VESTIBULE METAL ROOF RETURN

EXTERIOR ELEVATION KEYNOTES

MARK	DESCRIPTION
1	TRASH ENCLOSURE.
2	MODULAR BRICK VENEER (RED).
3	BRICK SOLDIER COURSE (TAN). SEE SECTION FOR SIZE
4	BRICK CONTROL JOINT. SEALANT COLOR TO MATCH BRICK COLOR.
5	ALUMINUM DOWNSPOUT.
6	HOLLOW METAL DOOR & FRAME. PAINT. CAULK COLOR TO MATCH BRICK.
7	ALUMINUM FASCIA - ALMOND.
8	ALUMINUM FASCIA - RED.
9	PREFINISHED STANDING SEAM METAL ROOFING.
10	CT CABINET AND ELECTRICAL METER. RE: ELECT. PLANS.
11	EIFS. COLOR: TAN.
12	CAST ALUMINUM BRICK VENT - ACCEPTABLE OPTIONS: HOHMANN & BARNARD #C025, 8" X 2 1/4" OR EX 025.
13	EMERGENCY FUEL SHUT OFF. RECESS FLUSH W/ WALL.
14	6" BOLLARD W/ 40" PLASTIC SLEEVE. SEE SHEET A124.
15	ALUMINUM STOREFRONT FRAMING W/ INSULATED GLAZING. CAULK COLOR GRAY DYMONIC.
16	ALUMINUM STOREFRONT ENTRANCE. CAULK COLOR GRAY DYMONIC.
17	ICE MERCHANTISER
18	LP CAGE
19	SNOW RETENTION BAR
20	PREFINISHED METAL GUTTER
21	BLUE HDGP. BOLLARD. REFER TO SITE PLANS.
22	PREFINISHED METAL WALL CAP.
23	KNOX BOX LOCATION WHEN NEEDED. OWNER PROVIDED.
24	SPLASH BLOCK
25	PROVIDE LOCK BOLT FOR EACH LEAF
26	INSULATED POLYCARBONATE DOOR
27	12 X 12 GLASS BLOCK
28	6 X 6 GLASS BLOCK
29	SUPPLY FAN. SEE HVAC PLANS.
30	FIRE EXTINGUISHER CABINET
31	HANDICAP PUSH PLATE. SEE ELECTRICAL SHEETS FOR MOUNTING HEIGHTS.
32	STREET ADDRESS NUMBERS TO BE LOCATED ON ENTRANCE DOOR. VERIFY WITH OWNER BEFORE APPLYING.
33	BRICK SOLDIER COURSE FIELD COLOR - (RED).
34	ALUMINUM STOREFRONT FRAMING W/ INSULATED SPANDREL GLAZING. CAULK COLOR GRAY DYMONIC.
35	CO2 FILL BOX. SEE FLOOR PLAN FOR MOUNTING HEIGHTS.
36	RECESSED OIL FILL BOX. SEE FLOOR PLAN FOR MOUNTING HEIGHTS.

Exterior Door Color Code

BAC Blend-a-Color	02	32	64	120
W1 White	-	12	1	-
B1 Black	-	24	1	-
R2 Maroon	-	19	-	-
R3 Magenta	-	26	1	1

EXTERIOR COLOR SCHEDULE

MATERIAL	MANUFACTURER	COLOR
BOLLARDS	--	BLACK, GLOSS
FASCIA	UNA-CLAD 24 GA.	REGAL RED ALMOND
GUTTERS & DOWNSPOUTS	--	ALMOND
SOFFIT	UNA-CLAD	ALMOND
METAL ROOF	UNA-CLAD	HEMLOCK GREEN
MORTAR	--	GREY
SEALANT	TREMCO DYMONIC	REDWOOD TAN
RED BRICK	TREMCO DYMONIC	LIMESTONE
TAN BRICK	TREMCO DYMONIC	HEMLOCK GREEN
ROOF CAP CAR WASH	UNA-CLAD	HEMLOCK GREEN
TAN BRICK	LEGENDARY	CLEAR BUFF
RED BRICK	LEGENDARY	CABERNET BURGUNDY
EIFS	TOTAL WALL	DIRTY MARTINI SWIRL TEXTURE
TRASH ENCLOSURE CAP	UNA-CLAD	HEMLOCK GREEN
BRICK LINTEL PAINT	TOTAL WALL	MORNING MIST (OR EQUAL)

EXTERIOR ELEVATION NOTES

- A. SEE FLOOR PLAN FOR WINDOW TYPE KEYS.
- B. CONTROL JOINT SEALANT TO MATCH VENEER COLOR.
- C. ALL DOWNSPOUTS TO CONNECT W/ BELOW GRADE DRAIN.
- D. VERIFY NUMBER OF GABLES AND LOCATION OF SIGNAGE WITH OWNER.
- E. CAST ALUMINUM BRICK VENT SHALL APPLY TO ALL STORES WITH CANOPY BRICK COLUMNS. REFER TO A100/A101 IF STORE REQUIRES BRICK COLUMNS
- F. CONTROL JOINTS LOCATED AT WINDOW AND DOOR LOCATIONS TO HAVE BACKER ROD AND SEALANT AT LOSSE LINTELS.



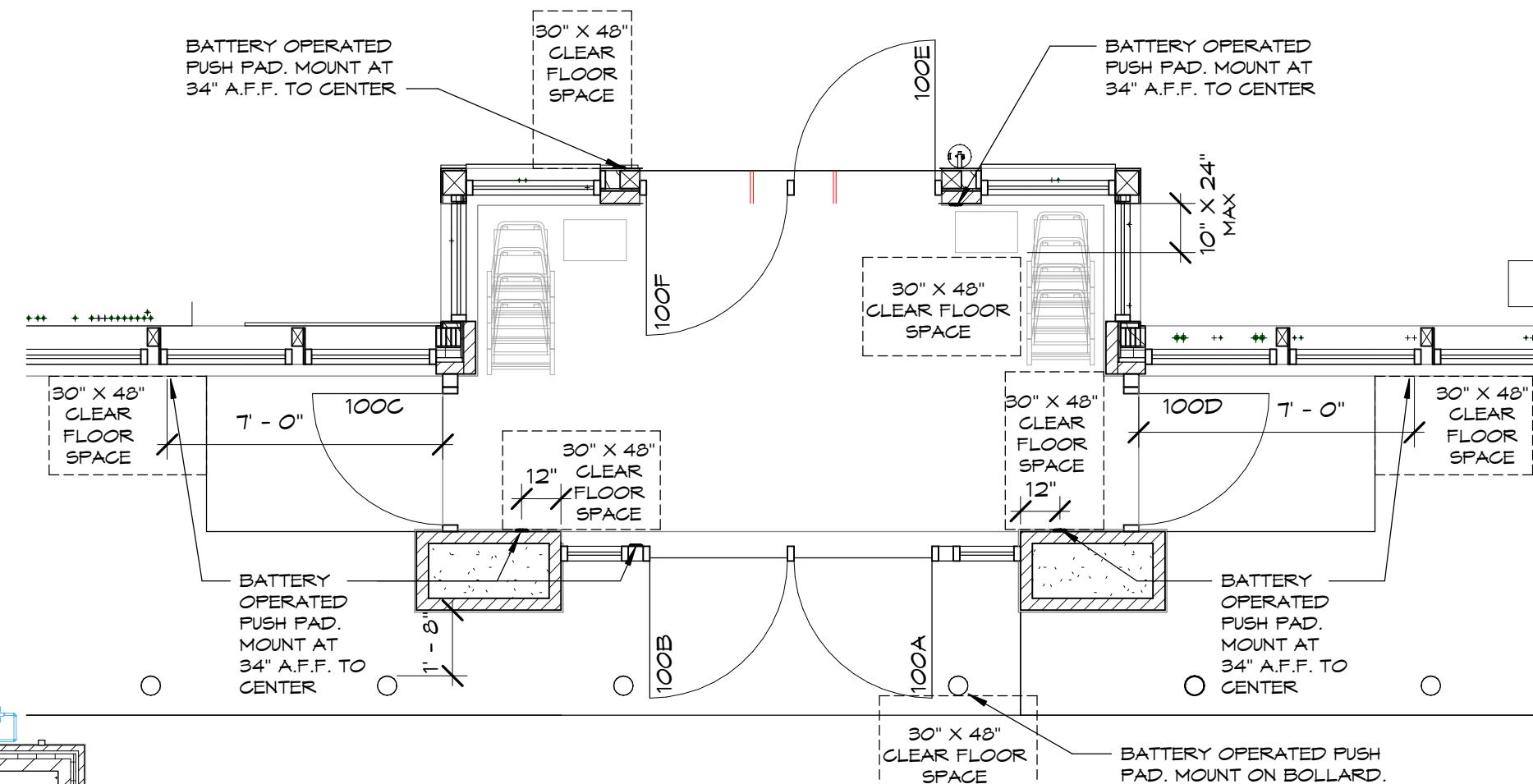
KWIK TRIP, Inc.
 P.O. BOX 2107
 1628 OAK STREET
 LA CROSSE, WI 54602-2107
 PH. (608) 781-8988
 FAX (608) 781-8960

PROJECT TITLE:
 Store #1730 - G3-MN-LH-1CW-SV
 Kwik Trip, Inc.
 PROJECT LOCATION:
 SW Intersection of 13th St SW & 6th Ave SW
 Pine City, MN

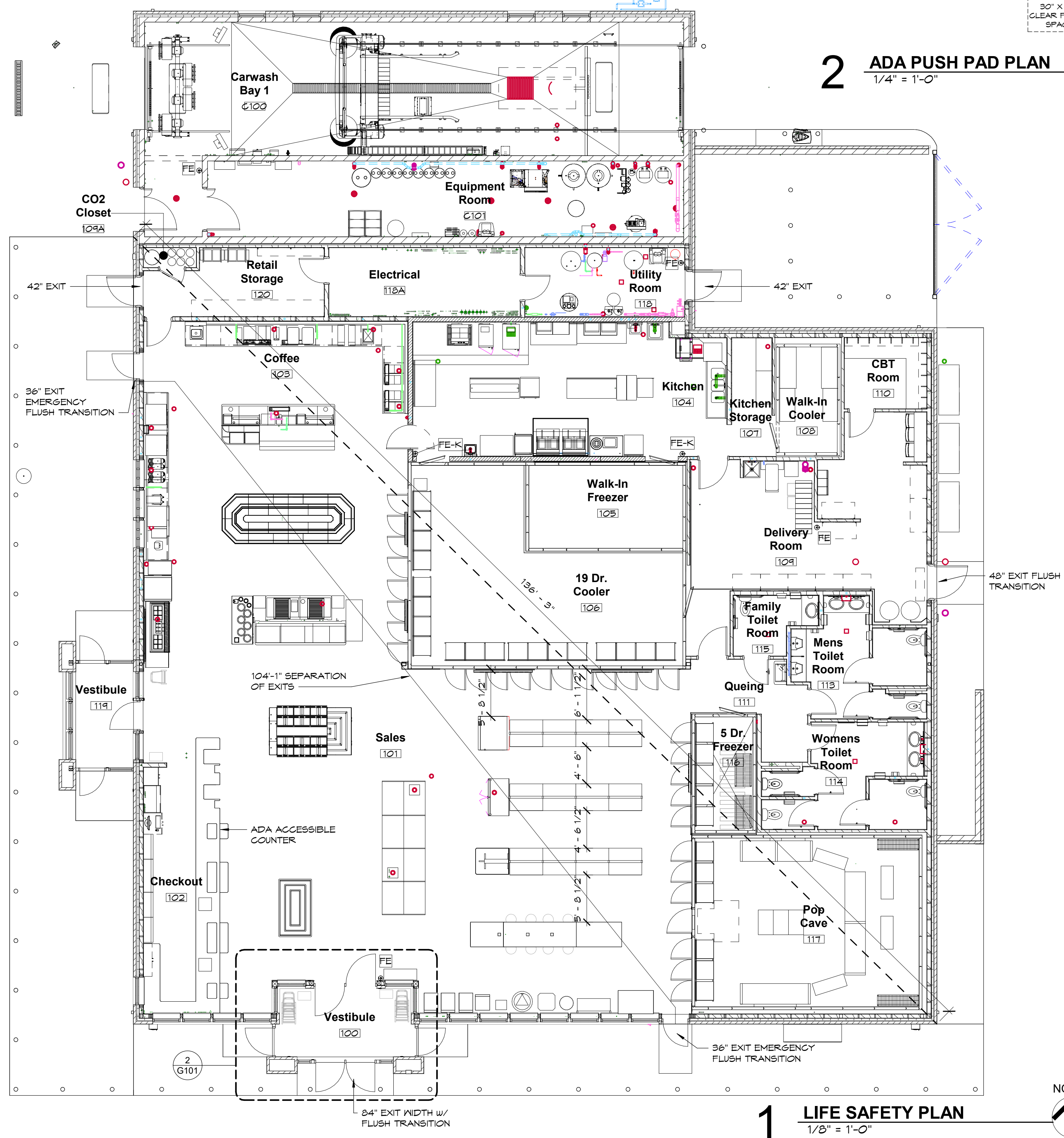
JOB #: 1081.642
 DATE: 09.27.2024
 DRAWN BY: Author
 TYPE: Permit Set
 REVISIONS
 NO. DATE

SHEET TITLE
 Exterior Elevations

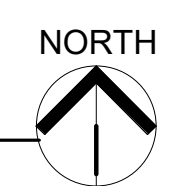
SHEET NO.
A200



2 ADA PUSH PAD PLAN
1/4" = 1'-0"



1 LIFE SAFETY PLAN
1/8" = 1'-0"



BUILDING CODE SUMMARY MN

Applicable Codes: 2018 International Building Code with State Amendments/ Chapter 1305 (2020 MN Building Code)
 2020 Minnesota State Building Code
 2020 Minnesota Accessibility Code
 2020 Minnesota State Fire Code (2018 IFC as amended by the State of Minnesota)
 2023 National Electrical Code
 2020 Minnesota Plumbing Code (Reference to 2018 Uniform Plumbing Code)
 Minimum Plumbing Fixtures/ 2018 IBC Chapter 29, as amended
 Minnesota Mechanical Code/ Chapter 1346/2018 IMC/2018 IFGC (2020 MN Mechanical and Fuel Gas Code)
 2024 Minnesota Commercial Energy Code
 Snow Loads/ MSBC Rules 1303.1700
 Frost Depth/ MSBC Rules 1303.1600
 Wind Speed/ Minimum 90 MPH
 Recycling Space/MSBC 103.1500

Description of Work: New Building

Building Occupancy: Classification: Store: Mercantile Group M
 Carwash: Business Group B

Building Areas: 11,033 sq. ft. (9,000 sq. ft. allowable)

Number of Stories: One (one allowable)

Type of Construction: Store: Type 5B: Non-Sprinklered
 Carwash: Type 5B: Non-Sprinklered

Sprinkler Requirements: Per 903.2.7 An automatic sprinkler system is not required for Group M fire areas less than 12,000 sq. ft.

Fire Alarm: Per 907.2.7 Group M- Manual fire alarm boxes are not required in a Group M occupancy having an occupant load less than 500 persons

Area Modifications: 506.3 Frontage Increase
 (312/440- 25) 30/30 = 0.45 x 9,000 sq. ft. = 4,050 sq. ft. additional per floor
 Section 508.2.4 - no separation is required between occupancy groups B & M.

Building Separations, Fire Partitions: Rated Areas

Fire Resistive Rating for Exterior Walls Table 602 Type V-B Construction, greater than 10 feet = 0 Rating

Attic Separation: Per 718.4 Draft stopping shall be installed in attics such that any horizontal area does not exceed 3,000 sq. ft. provide access to each separated area.

Occupant Load:

Per Table 1004.5	Space
Mercantile	5,500 sq. ft./60 sq. ft. = 91 persons
Grade Floor @ 60 sq. ft.	3,610 sq. ft./300 sq. ft. = 12 persons
Stock Area @ 300 sq. ft.	Total occupant load = 103 persons

Exit Requirements:

Table: 1005.3.2 "Required Exit Width" Based on occupant load - 103 x 0.2 = 20.6"
 Section: 1006 Number of Exits & Exit Access Doorways
 Section: 1006.2.1 Egress based on occupant load and common path of egress travel distance.
 Tables: 1006.2.1 & 1006.3.2 Two exits required where more than 30 person occupant load and less than 500 persons
 Table: 1006.2.1 Common path: Common path of egress travel shall not exceed 75ft.
 Section: 1007 Exit & Exit Access Doorway Configuration
 Table: 1007.1.1 Two exits shall be located a min. of 1/2 the diagonal distance of the building
 Section: 1017 Exit Access Travel Distance
 Table: 1017.2 Travel distance: 200 ft. Non-sprinklered
 Section: 1018 Aisles
 Table: 1018.2.2 Isle width shall not be less than 36"
 Section: 1020 Min. aisle width per section 1005.3.1 = 103 Occupant x .2 = 20.6 inches required.
 Table: 1020.2 Corridors
 Table: 1020.4 Corridor Width & Capacity
 Minimum corridor width = 44"
 Dead end corridors shall not exceed 20'. There are no dead end corridors on this project.

ADA Accessibility:

- The project will provide access to all areas of the facility. All spaces in the project will comply with ADA requirements.
- The Restrooms have toilet compartments with toe clearance on two sides since the interior partitions continue to the floor.

Section 604.9.5.1 Exception 1 & 2 - Min size for floor mounted toilets 65" deep x 66" wide min.

Sanitary Fixtures:

Per Table 2902.1

Area	U or WC (M)	WC(F) Lav	Showers	D.F.	Other
Mercantile	.14	.14	.19	---	.14 1 service sink
Business	.9	.9	1.1	---	.4 1 service sink
Required	2	2	2	---	2 1 service sink
Provided	4	4	4	---	See note below 1 service sink

Drinking Fountain Note: Kwik Trip provides free cups of water from soda machine to all who enter.

Fire Extinguishers: 906 per NFPA 10

Required Areas

- 906.1 - Required in groups B & M
- 906.1.2 - Required within 30 feet distance of travel from commercial cooking equipment.

Fire Hazard Classifications

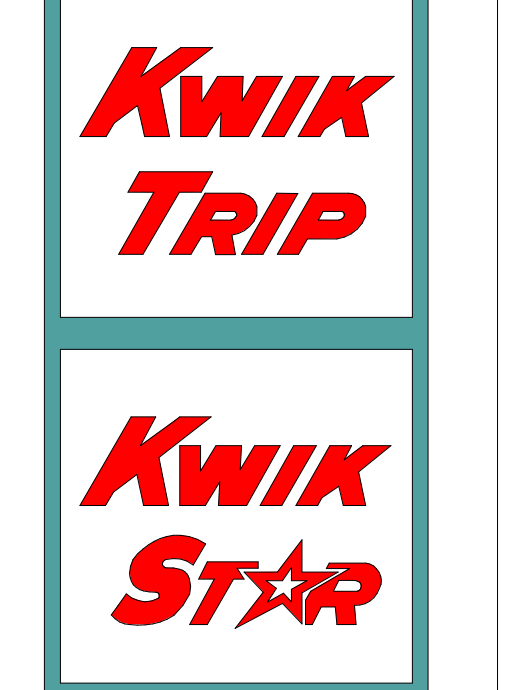
- 906.3.1 Class A Fire Hazards - Maximum distance of travel to extinguisher 75ft. - See floor plans for designated locations
- 906.4 Cooking equipment fires
- 906.4.2 Class K portable fire extinguisher to be included in hazard areas that contain deep fat fryers. See floor plan for location of all fire extinguishers (FE & FEK)

Foam Plastic Insulation: 2603.9 Special Approval - Cooler and freezer panels have passes UL1715 and conform to IBC 2603.9 for foam plastic insulation. See attached product data and Wisconsin Building Products Evaluation # 201305-1

Exhaust Hood: 1346.0507 Section 507 Commercial Kitchen Hoods

- 507.2.1 Type I Hood - Type I hood shall be installed where cooking appliances produce grease
- 507.2.2 Type II Hood - Type II hood shall be installed where cooking or dishwashing appliances produce heat, steam, or products of combustion and do not produce grease or smoke.

See floor plan for locations of both type I & II hoods



KWIK TRIP, Inc.
 P.O. BOX 2107
 1628 OAK STREET
 LA CROSSE, WI 54602-2107
 PH. (608) 781-8988
 FAX (608) 781-8960

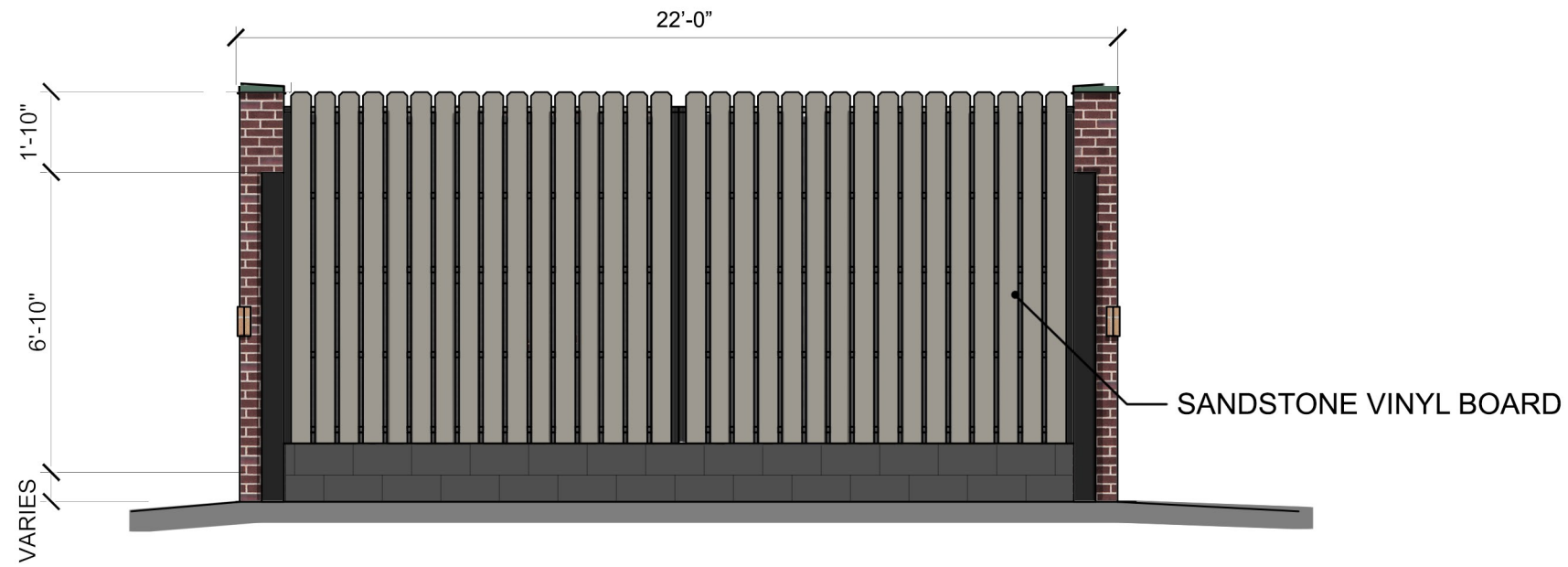
I HEREBY CERTIFY THAT THIS PLAN, SPECIFICATION, OR REPORT WAS PREPARED BY ME OR MY DIRECT SUPERVISION AND THAT I AM A DULY LICENSED ARCHITECT UNDER THE LAWS OF THE STATE OF WISCONSIN.
 SIGNATURE: JERRELL SCHROEDER
 DATE: 09/27/2024 REG. NO. 10110

I HEREBY CERTIFY THAT THIS PLAN, SPECIFICATION, OR REPORT WAS PREPARED BY ME OR MY DIRECT SUPERVISION AND THAT I AM A DULY LICENSED PROFESSIONAL ENGINEER UNDER THE LAWS OF THE STATE OF WISCONSIN.
 SIGNATURE: CARL L. FINE
 DATE: 09/27/2024 REG. NO. 42640

PROJECT TITLE:
 Store #1730 - G3-MN-LH-1CW-SV
 Kwik Trip, Inc.
 PROJECT LOCATION:
 SW Intersection of 13th St SW & 6th Ave SW
 Pine City, MN

JOB #: 1081.642
 DATE: 09.27.2024
 DRAWN BY: Author
 TYPE: Permit Set
 REVISIONS
 NO. DATE

SHEET TITLE
 Life Safety Plan/ Code Compliance
 SHEET NO.
G101

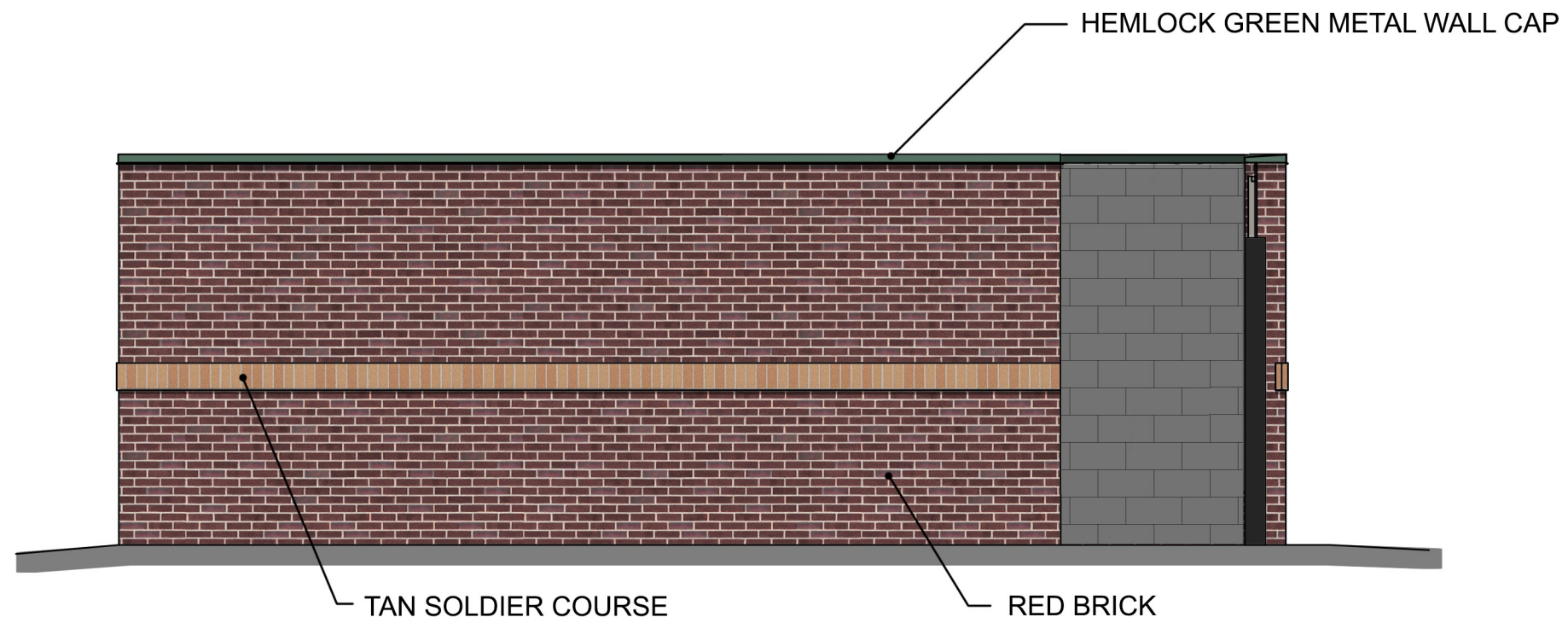


TRASH ENCLOSURE - FRONT ELEVATION

**KWIK
TRIP**

**KWIK
STAR**

KWIK TRIP, Inc.
P.O. BOX 2107
1626 OAK STREET
LA CROSSE, WI 54602-2107
PH. (608) 781-8988
FAX (608) 781-8960



TRASH ENCLOSURE - SIDE ELEVATION



***KWIK
TRIP***

***KWIK
STAR***

KWIK TRIP, Inc.
P.O. BOX 2107
1626 OAK STREET
LA CROSSE, WI 54602-2107
PH. (608) 781-8988
FAX (608) 781-8960

10 MPD



FRONT LEFT VIEW



FRONT RIGHT VIEW



REAR RIGHT VIEW



REAR LEFT VIEW



FRONT ELEVATION

**Kwik
TRIP**

**Kwik
STAR**

KWIK TRIP, Inc.
P. O. BOX 2107
1626 OAK STREET
LA CROSSE, WI 54602-2107
PH. (608) 781-8988
FAX (608) 781-8960

EXTERIOR ELEVATIONS
LEFT HAND GEN 3 with 1 BAY CARWASH