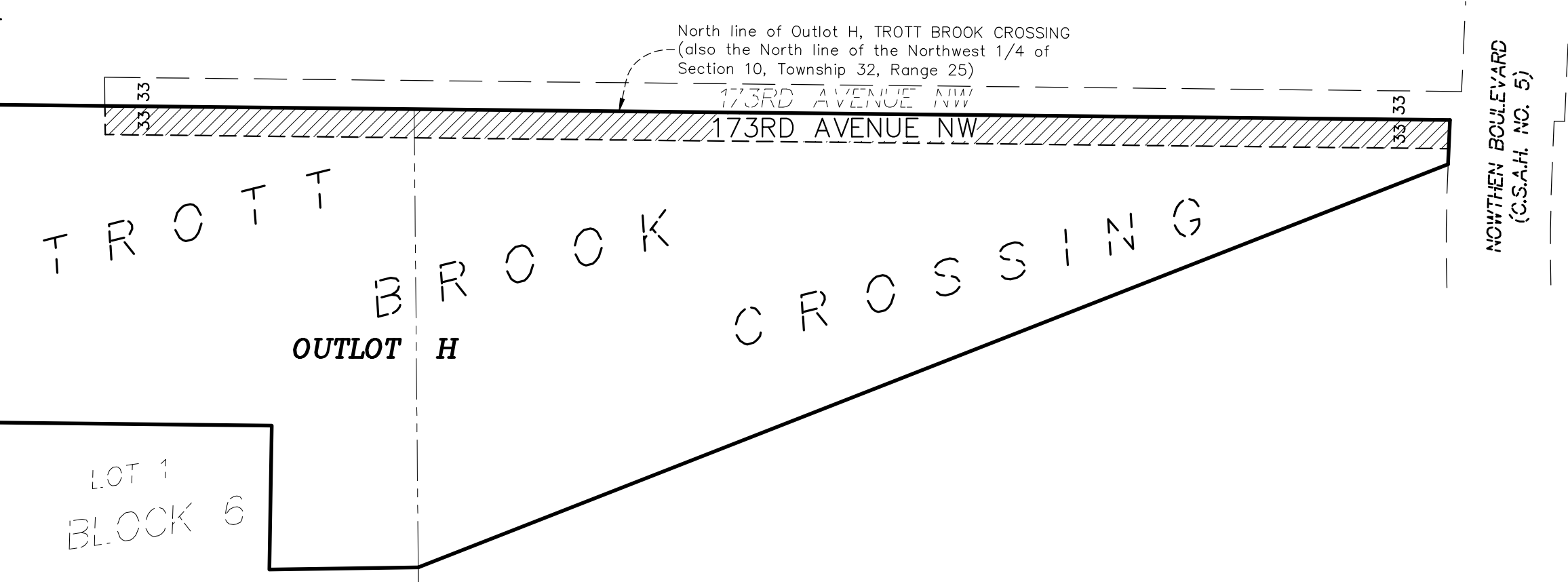
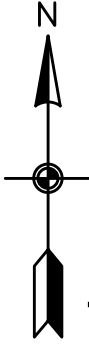
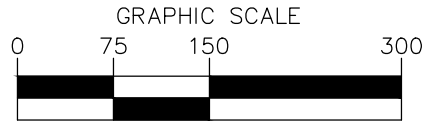


# Road Vacation Description Sketch



**ROADWAY VACATION DESCRIPTION:**

All that part of 173rd Avenue NW embraced within Outlot H, TROTT BROOK CROSSING, according to the recorded plat thereof, Anoka County, Minnesota.



(IN FEET)  
(8.5x11 sheet)



**CARLSON  
ENGINEERING**

ENGINEERING \ SURVEYING \ PLANNING

3890 PHEASANT RIDGE DRIVE NE, SUITE 100, BLAINE, MN 55449  
TEL 763.489.7900 \ FAX 763.489.7959 \ CARLSON-ENGINEERING.COM