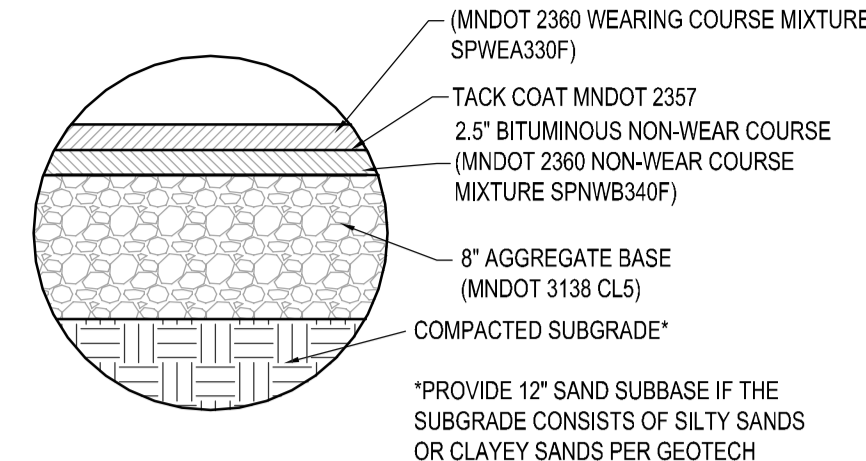
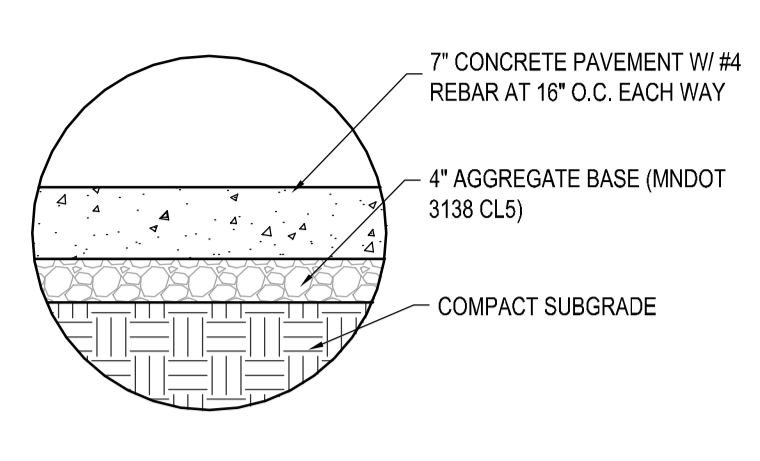


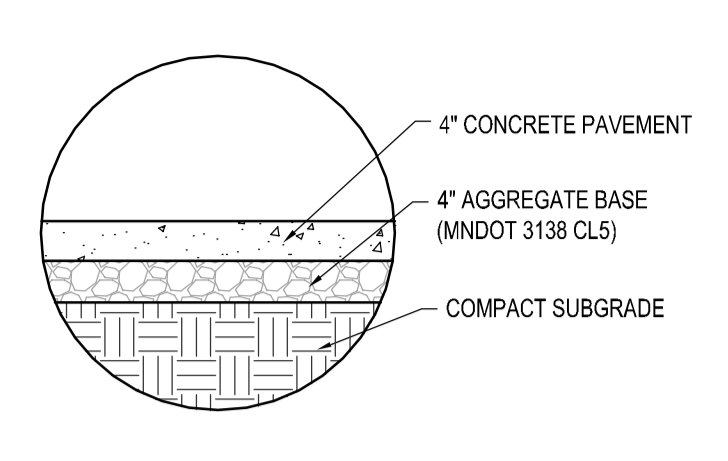
E1 LIGHT DUTY ASPHALT PAVEMENT SECTION NO SCALE



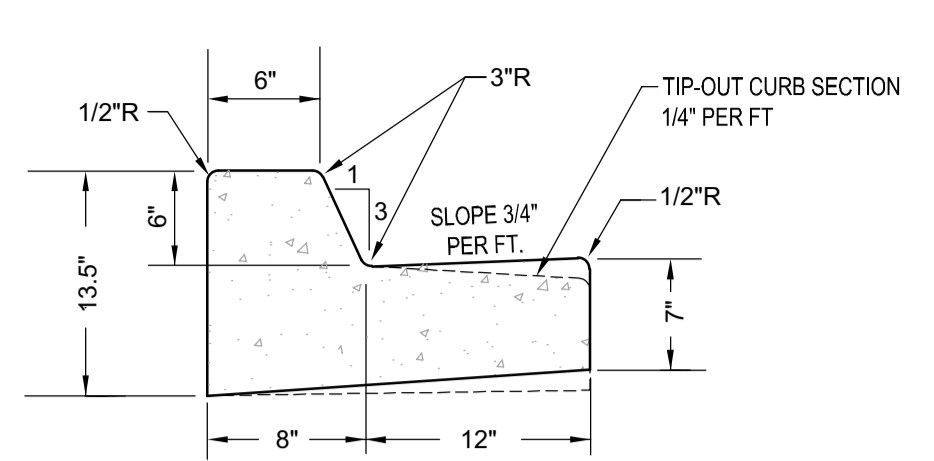
E2 HEAVY DUTY ASPHALT PAVEMENT SECTION NO SCALE



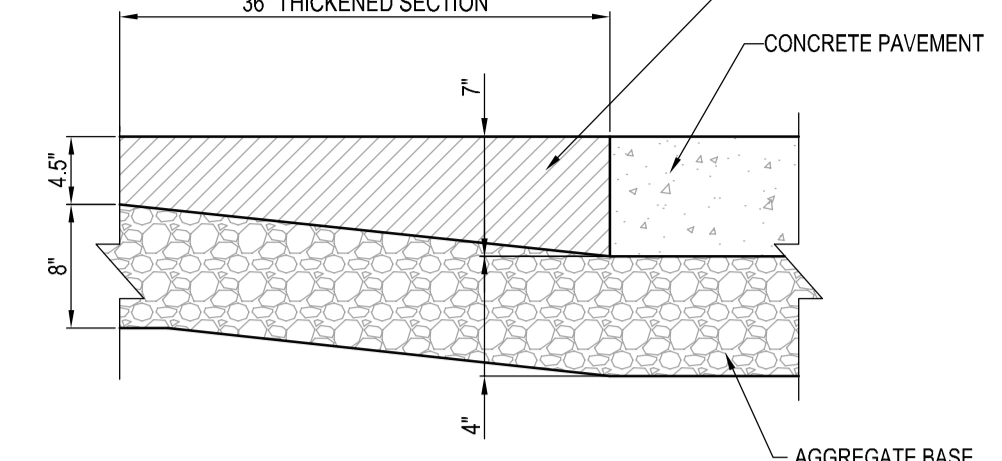
E3 CONCRETE PAVEMENT SECTION NO SCALE



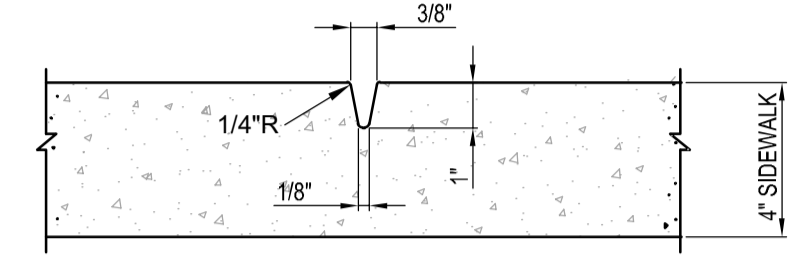
E4 CONCRETE SIDEWALK SECTION NO SCALE



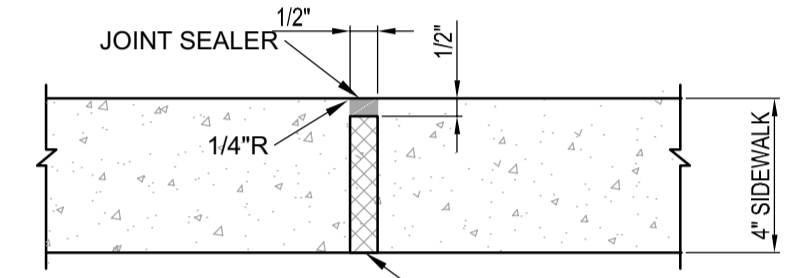
E5 B612 CONCRETE CURB & GUTTER NO SCALE



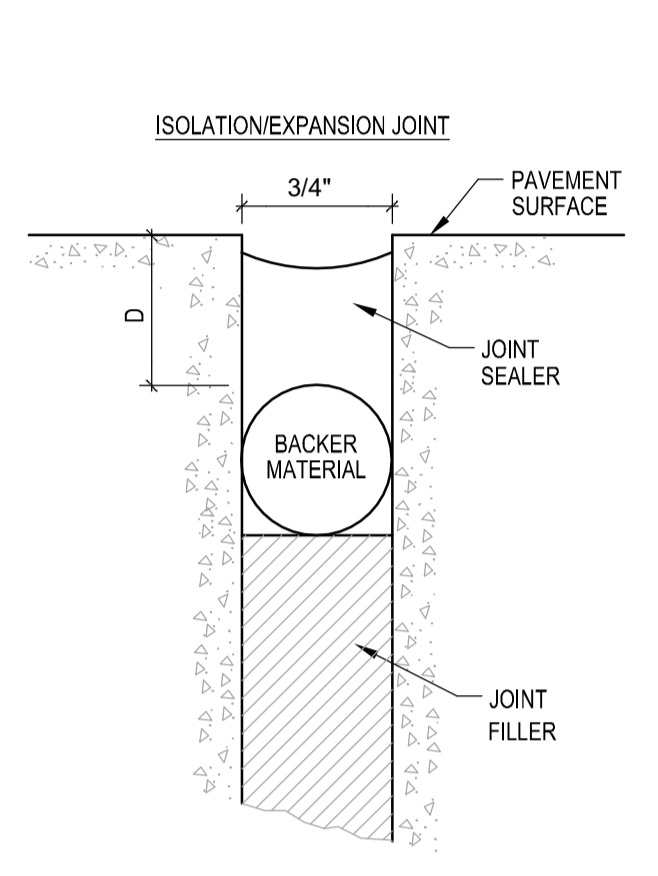
E6 THICKENED EDGE ASPHALT NO SCALE



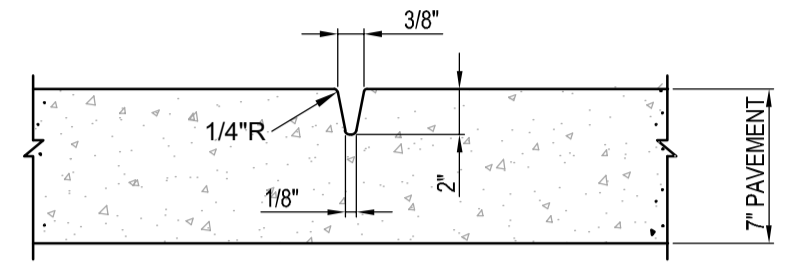
D1 SIDEWALK JOINT NO SCALE



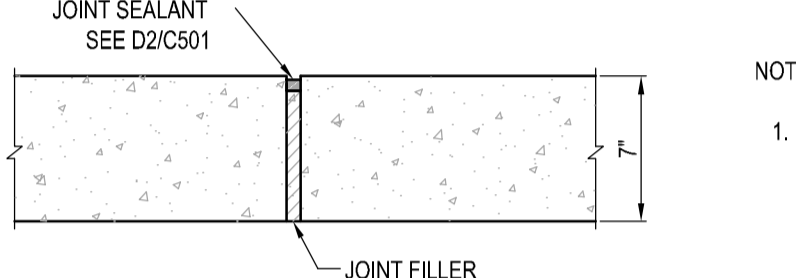
D2 JOINT SEALANT NO SCALE



D3 CONCRETE PAVEMENT JOINT NO SCALE

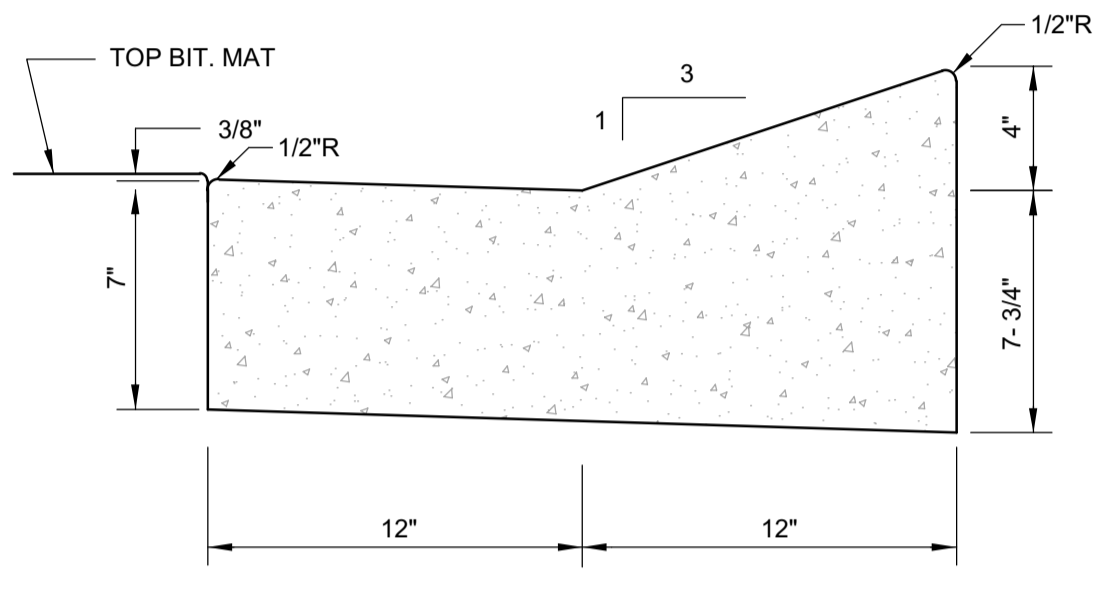


D4 TOOLED CONTROL JOINT NO SCALE

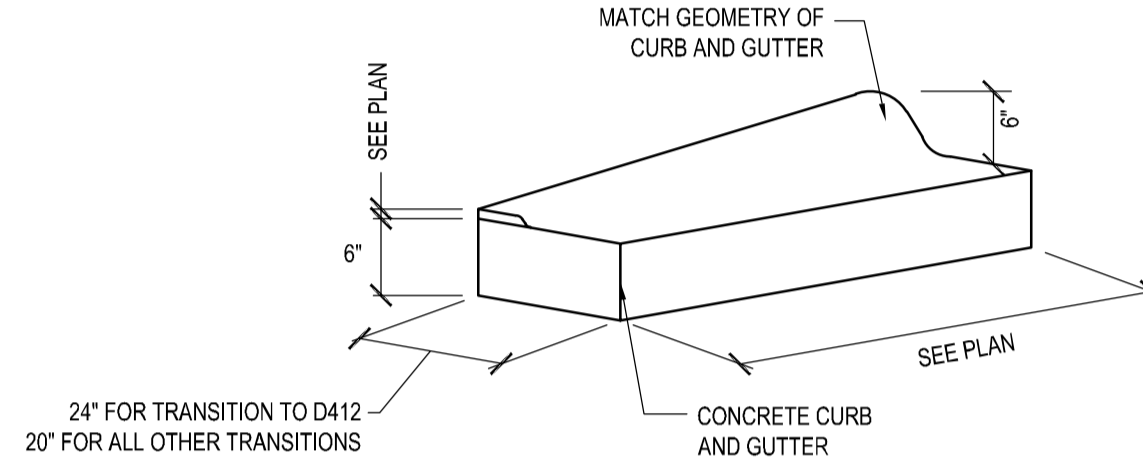


D5 EXPANSION JOINT NO SCALE

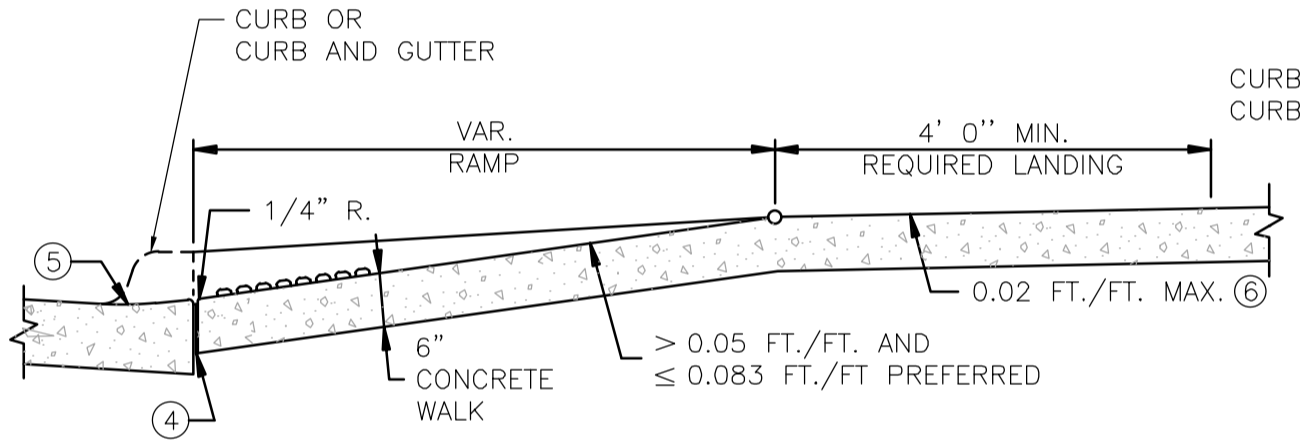
- NOTES:
- REINFORCE ODD SHAPED PAVING PANELS WITH #3 BARS AT 24" EACH WAY. AN ODD SHAPED PANEL IS CONSIDERED TO BE ON IN WHICH THE SLAB TAPERS TO A SHARP ANGLE WHEN THE LENGTH TO WIDTH RATIO EXCEEDS 3 TO 1 OR WHEN A SLAB IS NEITHER SQUARE NOR RECTANGULAR.
 - REFER TO DETAIL D2/C501 FOR JOINT SEALANT.



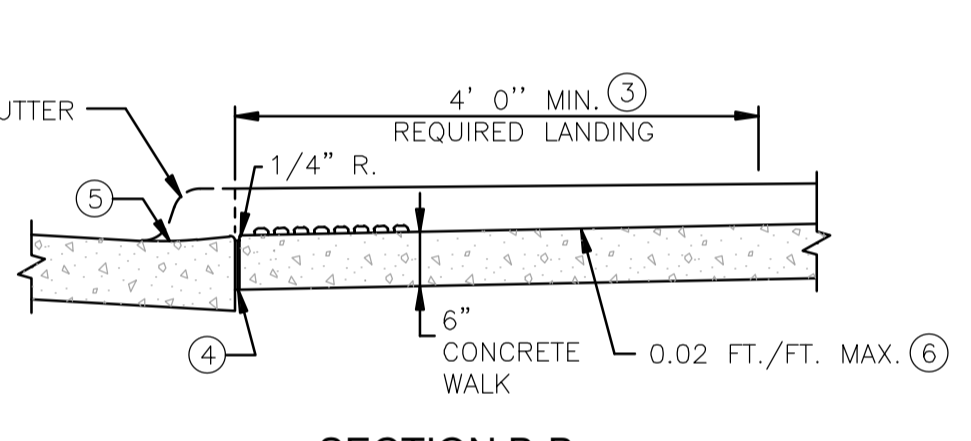
D5 D412 CONCRETE CURB & GUTTER NO SCALE



D6 CURB TAPER NO SCALE



SECTION A-A PERPENDICULAR/TIERED



SECTION B-B PARALLEL

LEGEND

THESE LONGITUDINAL SLOPE RANGES SHALL BE THE STARTING POINT. IF SITE CONDITIONS WARRANT, LONGITUDINAL SLOPES UP TO 8.3% OR FLATTER ARE ALLOWED.

(S) INDICATES PEDESTRIAN RAMP - SLOPE SHALL BE BETWEEN 5.0% MINIMUM AND 8.3% MAXIMUM IN THE DIRECTION SHOWN AND THE CROSS SLOPE SHALL NOT EXCEED 2.0%

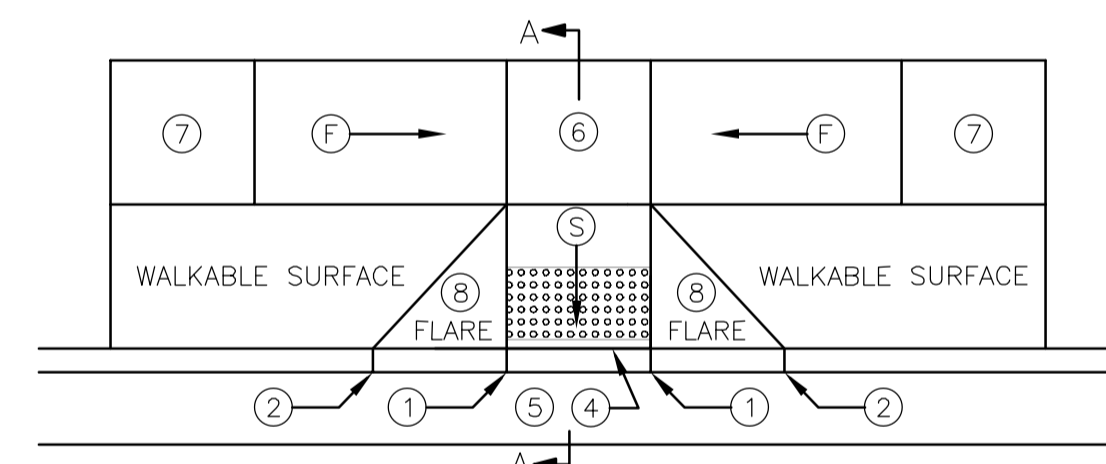
(F) INDICATES PEDESTRIAN RAMP - SLOPE SHALL BE GREATER THAN 2.0% AND LESS THAN 5.0% IN THE DIRECTION SHOWN AND CROSS SLOPE SHALL NOT EXCEED 2.0%

NOTES

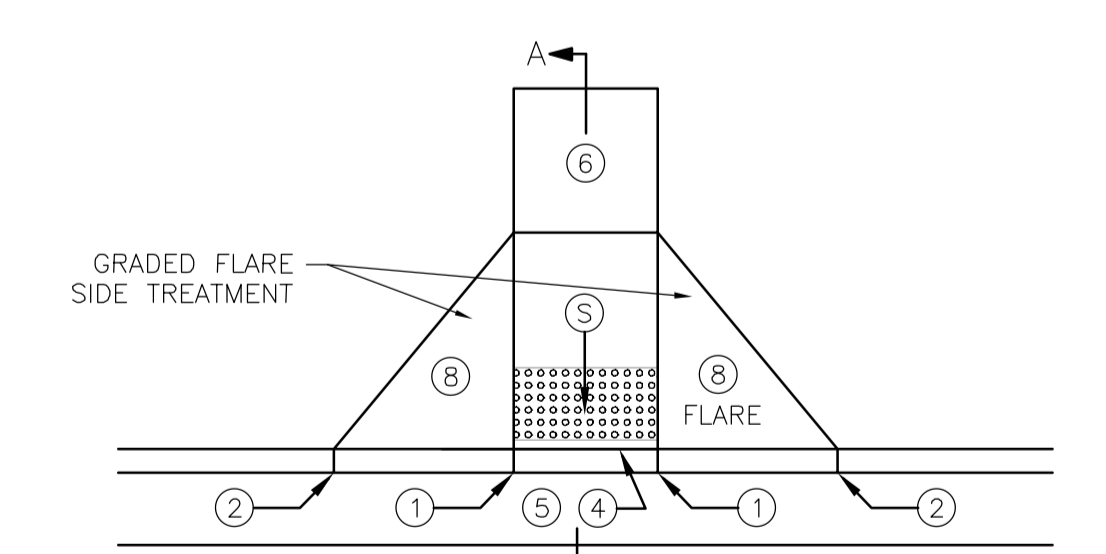
- LANDINGS SHALL BE LOCATED ANYWHERE THE PEDESTRIAN ACCESS ROUTE CHANGES DIRECTION, AT THE TOP OF RAMPS THAT HAVE RUNNING SLOPES GREATER THAN 5.0%, AND IF THE APPROACHING WALK IS INVERSE GRADE.
- INITIAL CURB RAMP LANDINGS SHALL BE CONSTRUCTED WITHIN 15' FROM THE BACK OF CURB, WITH 6' FROM THE BACK OF CURB BEING THE PREFERRED DISTANCE.
- SECONDARY CURB RAMP LANDINGS ARE REQUIRED FOR EVERY 30" OF VERTICAL RISE WHEN THE LONGITUDINAL SLOPE IS GREATER THAN 5.0%.
- CONTRACTION JOINTS SHALL BE CONSTRUCTED ALONG ALL GRADE BREAKS.
- ALL GRADE BREAKS WITHIN THE PAR SHALL BE PERPENDICULAR TO THE PATH OF TRAVEL.
- TO ENSURE RAMPS AND LANDINGS ARE PROPERLY CONSTRUCTED, LANDINGS MAY BE CAST SEPARATELY.
- FOLLOW SIDEWALK REINFORCEMENT DETAILS ON SHEET 5 WHEN LANDINGS ARE CAST SEPARATELY. ALL SLOPES ARE ABSOLUTE, RATHER THAN RELATIVE TO SIDEWALK/ROADWAY GRADES.
- TOP OF CURB SHALL MATCH PROPOSED ADJACENT WALK GRADE. 4' MINIMUM WIDTH OF DETECTABLE WARNING IS REQUIRED FOR ALL RAMPS.
- DETECTABLE WARNINGS SHALL CONTINUOUSLY EXTEND FOR A MINIMUM OF 24" IN THE PATH OF TRAVEL.
- SHARED USE PATHS SHALL HAVE DETECTABLE WARNING ACROSS THE ENTIRE WIDTH OF PATH WHEN THE PATH CROSSES A ROAD.
- SEE MNDOT STANDARD PLATE 7038 FOR ADDITIONAL DETAILS ON DETECTABLE WARNING.
- SIDE TREATMENTS ARE APPLICABLE TO ALL RAMP TYPES AND SHOULD BE IMPLEMENTED AS NEEDED ON ALL RAMPS AS FIELD CONDITIONS DICTATE. THE ENGINEER SHALL DETERMINE THE RAMP SIDE TREATMENTS BASED ON MAINTENANCE OF BOTH ROADWAY AND SIDEWALK, ADJACENT PROPERTY CONSIDERATIONS, AND MITIGATING CONSTRUCTION IMPACTS.
- POSITIVE FLOW LINE DRAINAGE SHALL BE MAINTAINED THROUGH THE PEDESTRIAN ACCESS ROUTE (PAR) AT A 2% MAXIMUM.
- NO PONDING SHALL BE PRESENT IN THE PAR.
- ANY VERTICAL LIP THAT OCCURS AT THE FLOW LINE SHALL NOT BE GREATER THAN 1/4 INCH.
- WHEN NO CONCRETE FLARES ARE PROPOSED, THE CONCRETE WALK SHALL BE FORMED AND CONSTRUCTED PERPENDICULAR TO THE EDGE OF ROADWAY. MAINTAIN 3" BETWEEN EDGE OF DOMES AND EDGE OF CONCRETE.

KEYNOTES

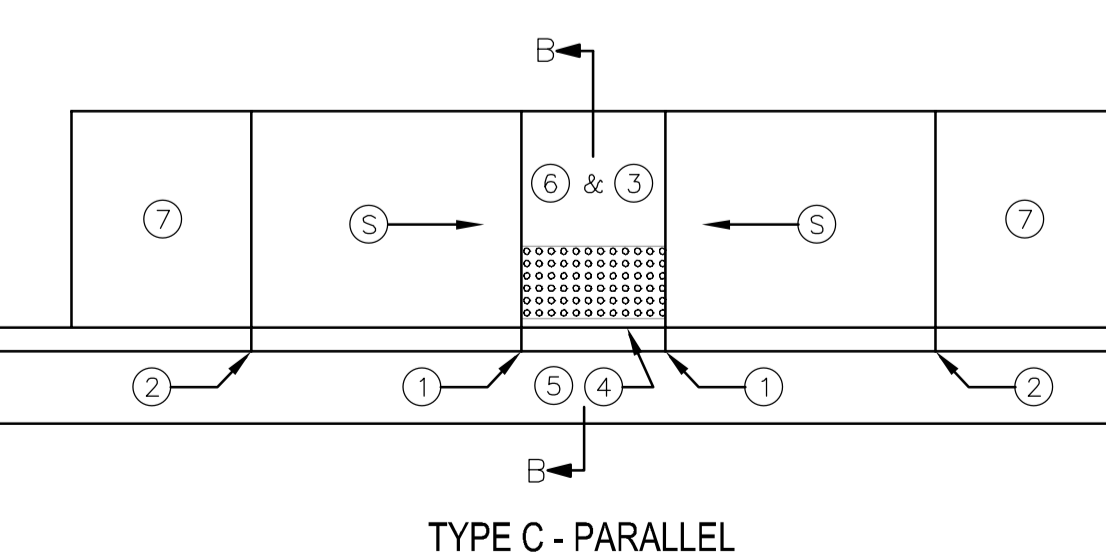
- 0" CURB HEIGHT.
- FULL CURB HEIGHT.
- 4' X 4' MIN. LANDING WITH MAX. 2.0% SLOPE IN ALL DIRECTIONS. IF LONGITUDINAL SLOPE IS GREATER THAN 5.0%, 4' X 4' MIN.
- 1/2" PREFORMED JOINT FILLER MATERIAL AASHTO M 213. JOINT FILLER SHALL BE PLACED FLUSH WITH THE BACK OF CURB AND ADJACENT SIDEWALK. JOINT SHALL BE FREE OF DEBRIS. RECTANGULAR DETECTABLE WARNINGS SHALL BE SETBACK 3" FROM THE BACK OF CURB. RADIAL DETECTABLE WARNINGS SHALL BE SETBACK 3" MINIMUM TO 6" MAXIMUM FROM THE BACK OF CURB.
- SEE PEDESTRIAN ACCESS ROUTE CURB AND GUTTER DETAIL FOR INFORMATION ON CONSTRUCTING CURB AND GUTTER AT CURB OPENINGS.
- 4' BY 4' MIN. LANDING WITH MAX. 2.0% SLOPE IN ALL DIRECTIONS. IF LONGITUDINAL SLOPE IS GREATER THAN 5.0%, 4' X 4' MIN.
- LANDING WITH MAX 2.0% SLOPE IN ALL DIRECTIONS REQUIRED.
- SEE SIDE TREATMENT OPTIONS, FOR DETAILS ON FLARES AND RETURNED CURBS.
- 3' FLARE, UNLESS OTHERWISE NOTED.
- 6' FLARE, UNLESS OTHERWISE NOTED.
- THERE SHALL BE NO VERTICAL DISCONTINUITIES GREATER THAN 1/4".
- TOP FRONT OF GUTTER SHALL BE CONSTRUCTED FLUSH WITH PROPOSED ADJACENT PAVEMENT ELEVATION. PAR GUTTER SHALL NOT BE OVERLAID.
- MAX. 2.0% SLOPE IN ALL DIRECTIONS IN FRONT OF GRADE BREAK AND DRAIN TO FLOW LINE. SHALL BE CONSTRUCTED INTEGRAL WITH CURB AND GUTTER.
- PLACE DOMES AT THE BACK OF CURB WHEN ALLOWABLE SETBACK CRITERIA IS EXCEEDED.



TYPE A - TIERED PERPENDICULAR

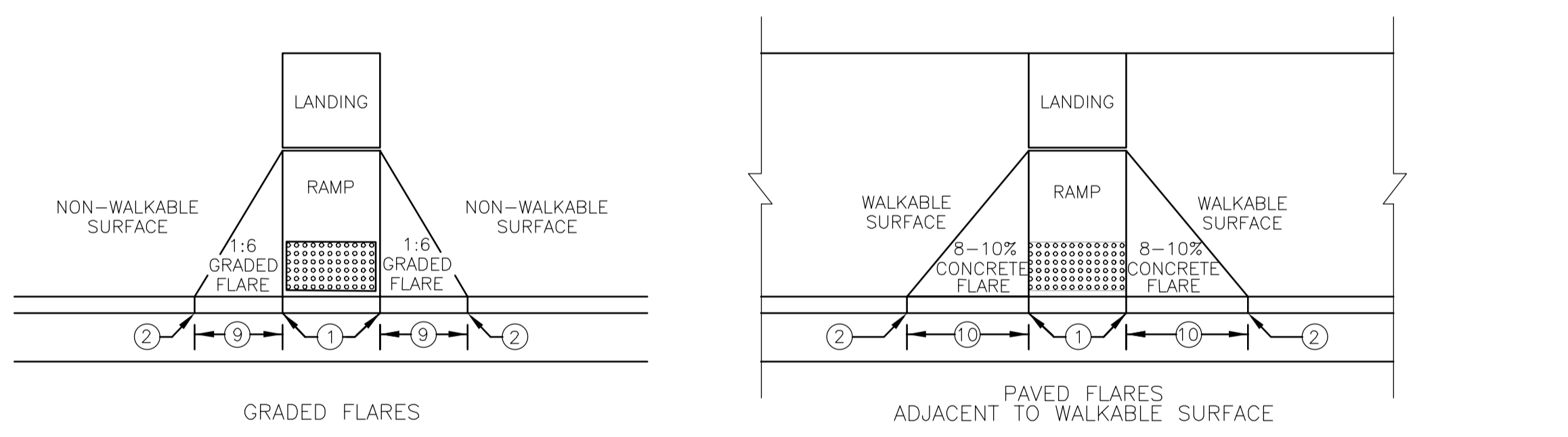


TYPE B - PERPENDICULAR

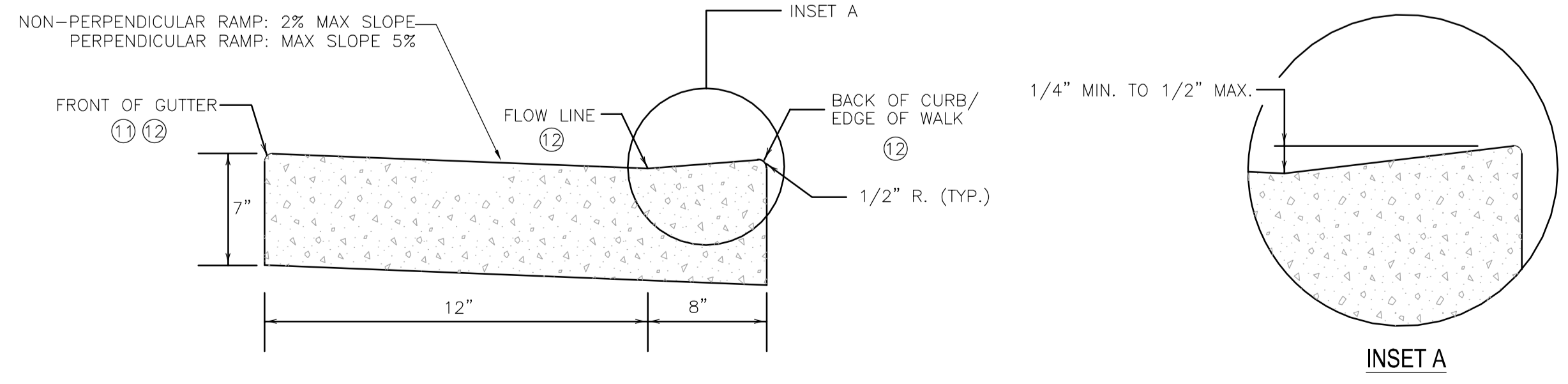


TYPE C - PARALLEL

RAMP CROSS SECTIONS



RAMP SIDE TREATMENTS



PEDESTRIAN ACCESS ROUTE (PAR) AND CURB DETAIL

ACCESSIBLE CURB RAMP

BORDER FOODS, LLC



5425 BOONE AVENUE NORTH
NEW HOPE, MN 55428
T 763.489.2932

PROJECT
TACO BELL

14751 ARMSTRONG BLVD
NW, RAMSEY,
MINNESOTA 55303

ISSUE
SITE PLAN REVIEW
SUBMITTAL
04/11/2025

REVISION	DATE
CITY COMMENTS	05/07/2025
CITY COMMENTS	05/19/2025

Elan
DESIGN
CIVIL ENGINEERING | LANDSCAPE ARCHITECTURE
310 4TH AVE SOUTH, SUITE 1006
MINNEAPOLIS, MN 55415
p 612.260.7980
f 612.260.7990 | www.elanlab.com

CERTIFICATION

NOT FOR CONSTRUCTION

SHEET

DETAILS

C501

PROJECT NO.
BFO25001



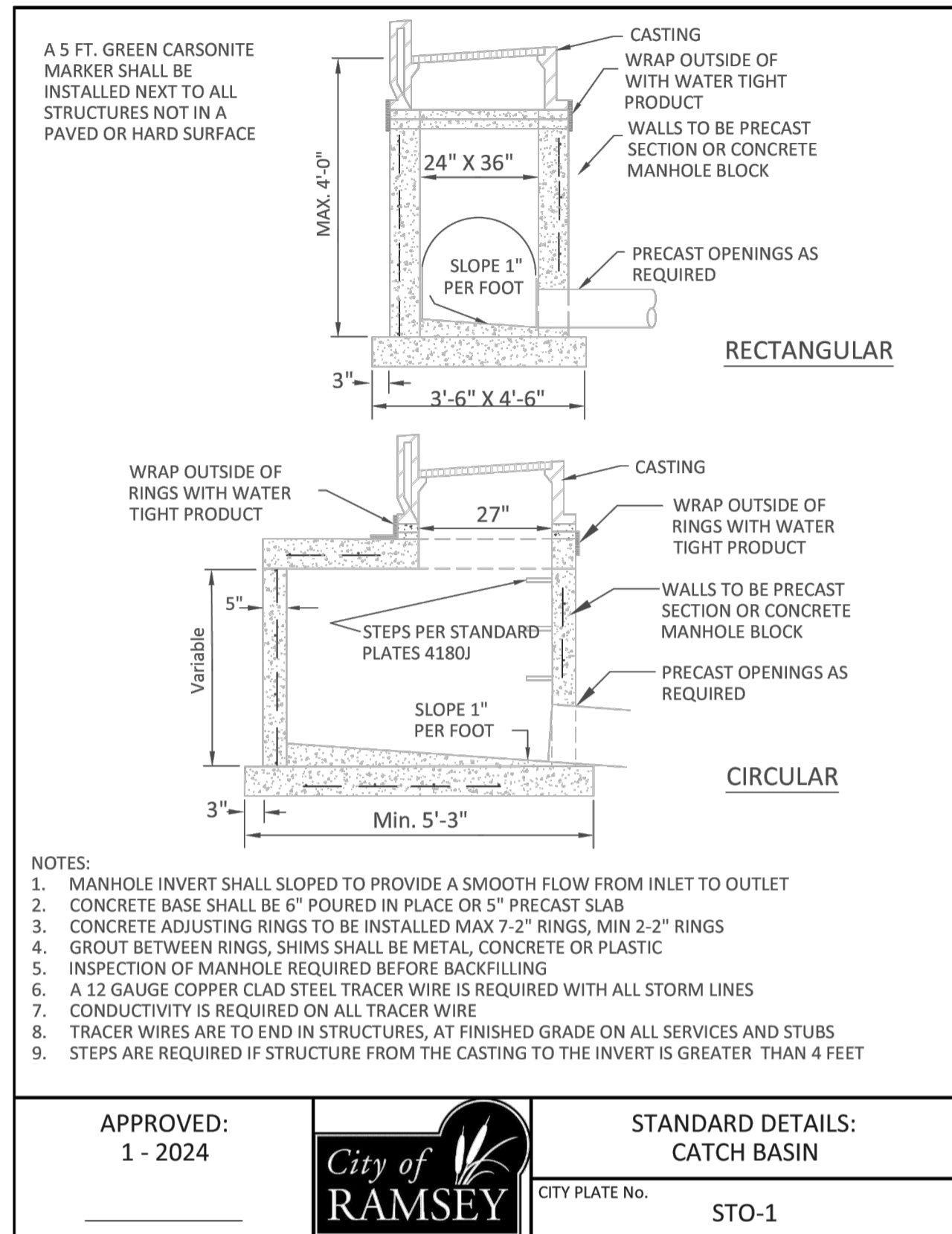
5425 BOONE AVENUE NORTH
NEW HOPE, MN 55428
T 763.489.2932

PROJECT
TACO BELL

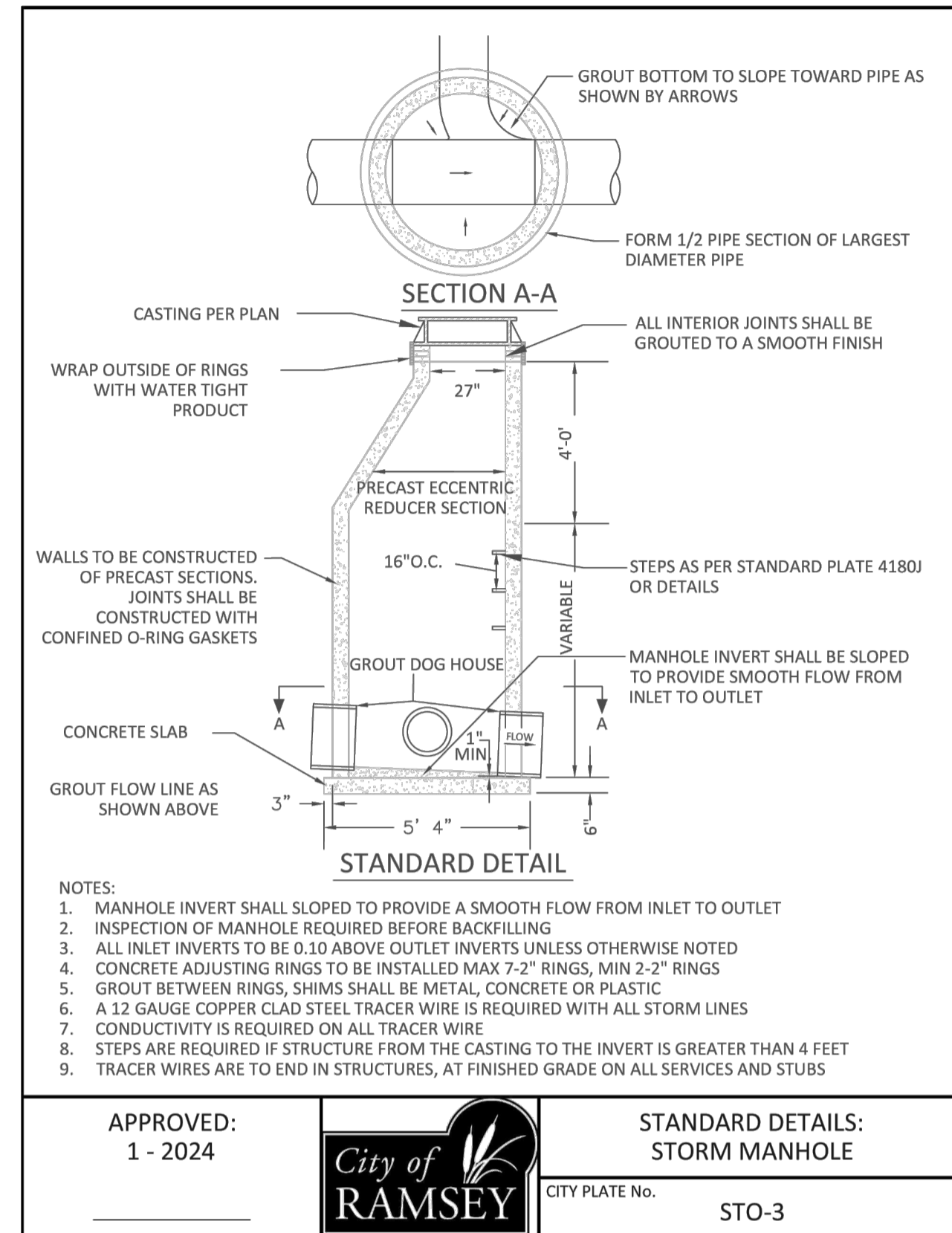
14751 ARMSTRONG BLVD
NW, RAMSEY,
MINNESOTA 55303

ISSUE
**SITE PLAN REVIEW
SUBMITTAL
04/11/2025**

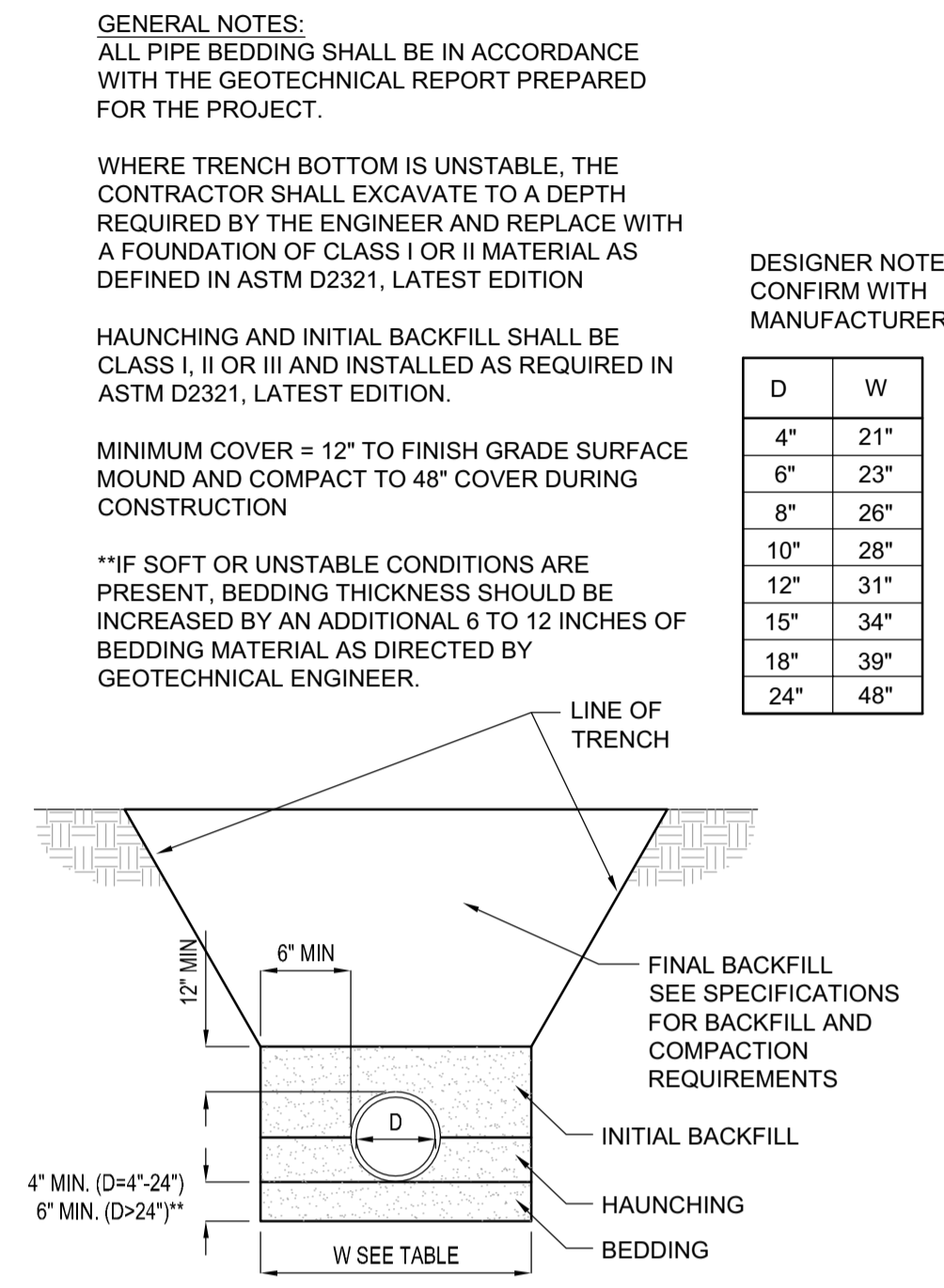
REVISION	DATE
CITY COMMENTS	05/07/2025
CITY COMMENTS	05/19/2025



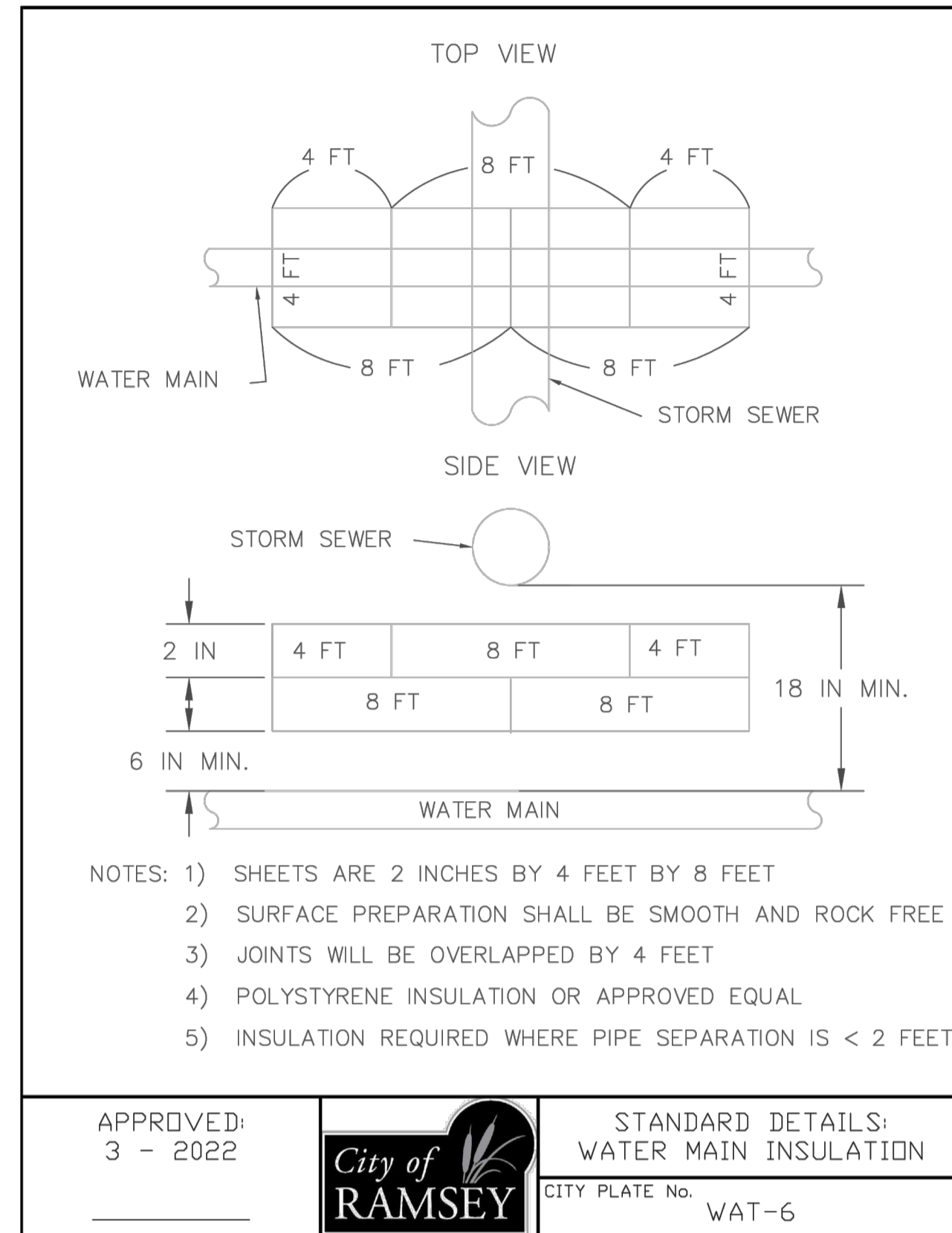
D1 CATCH BASIN NO SCALE



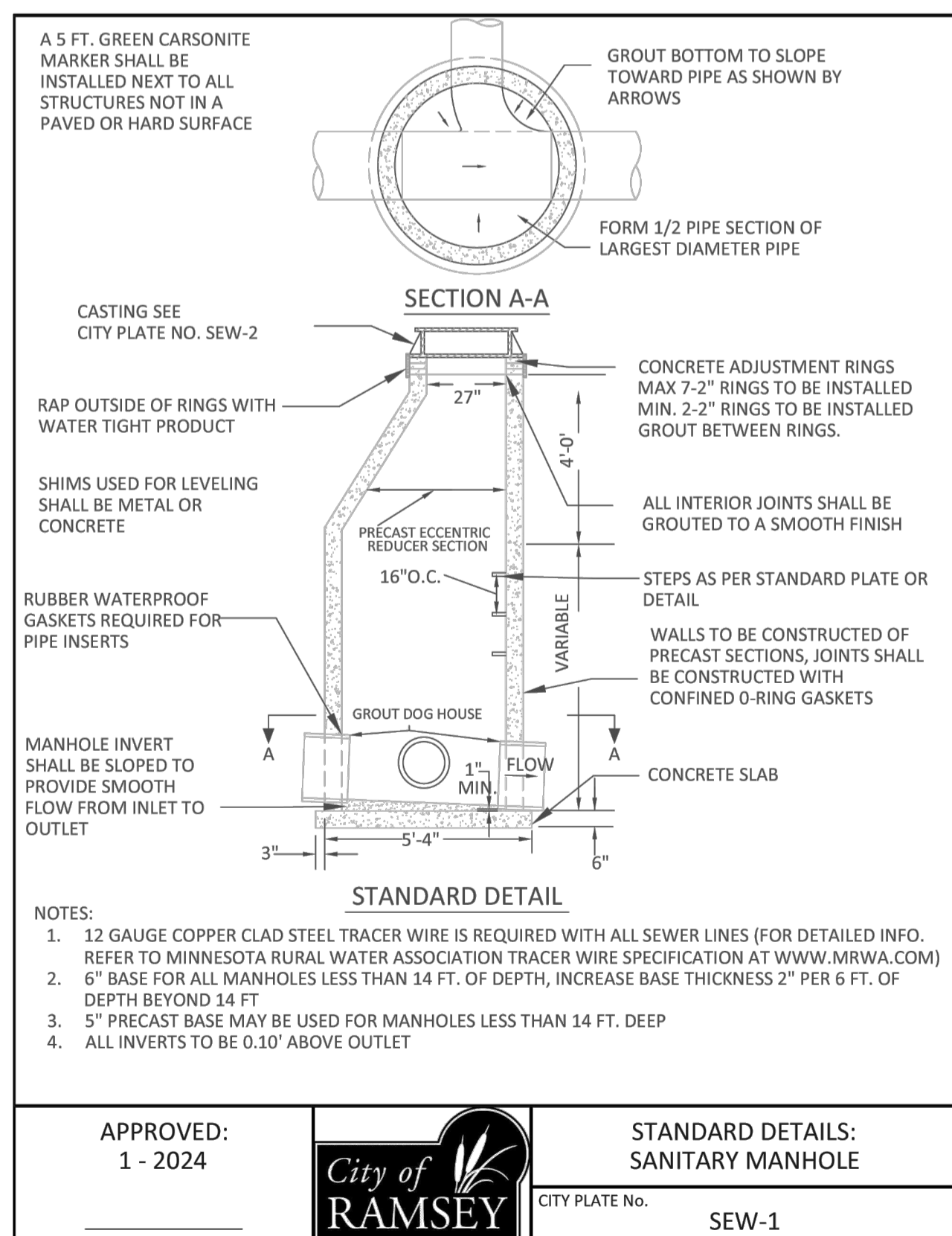
D2 STORM MANHOLE NO SCALE



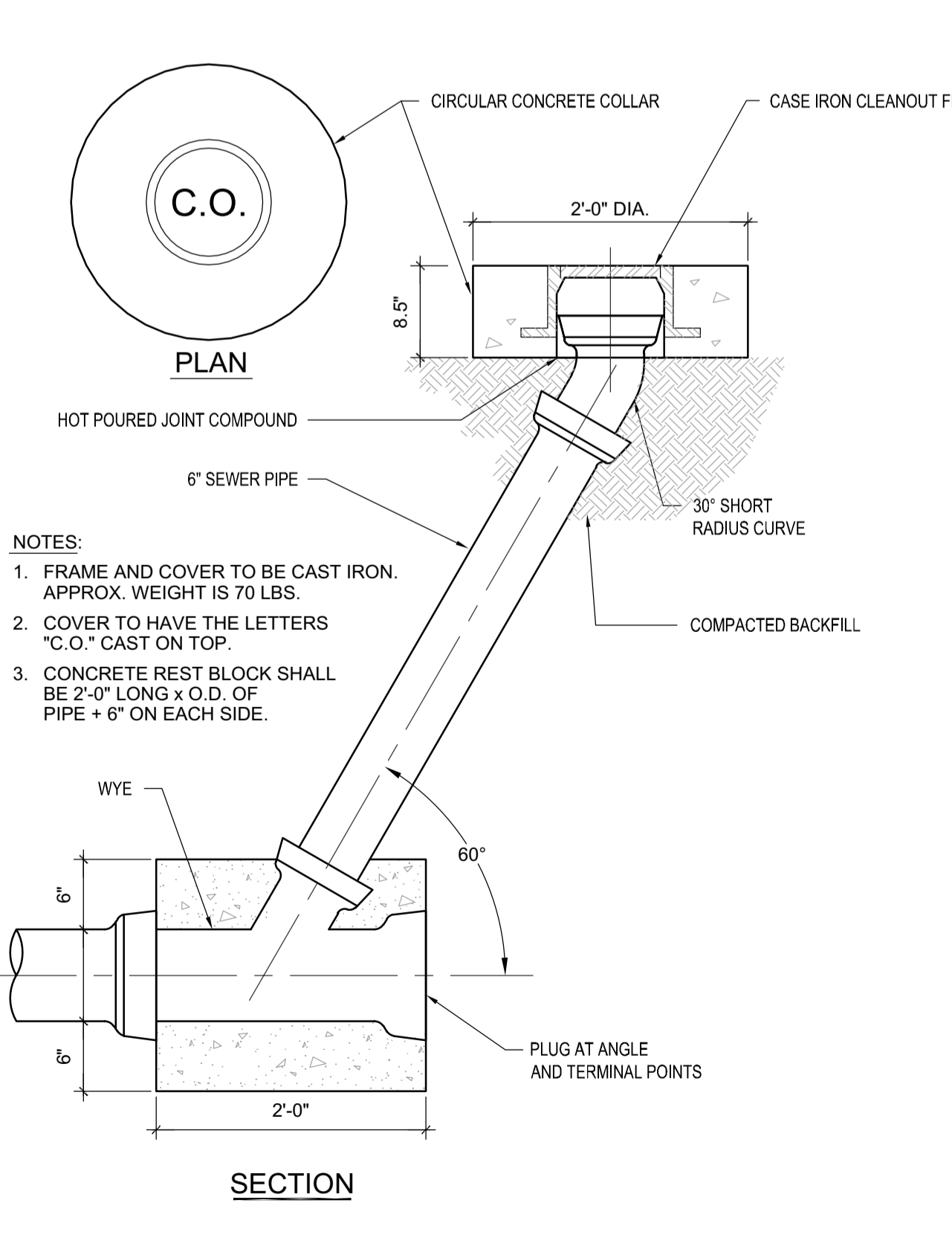
D4 PVC PIPE BEDDING NO SCALE



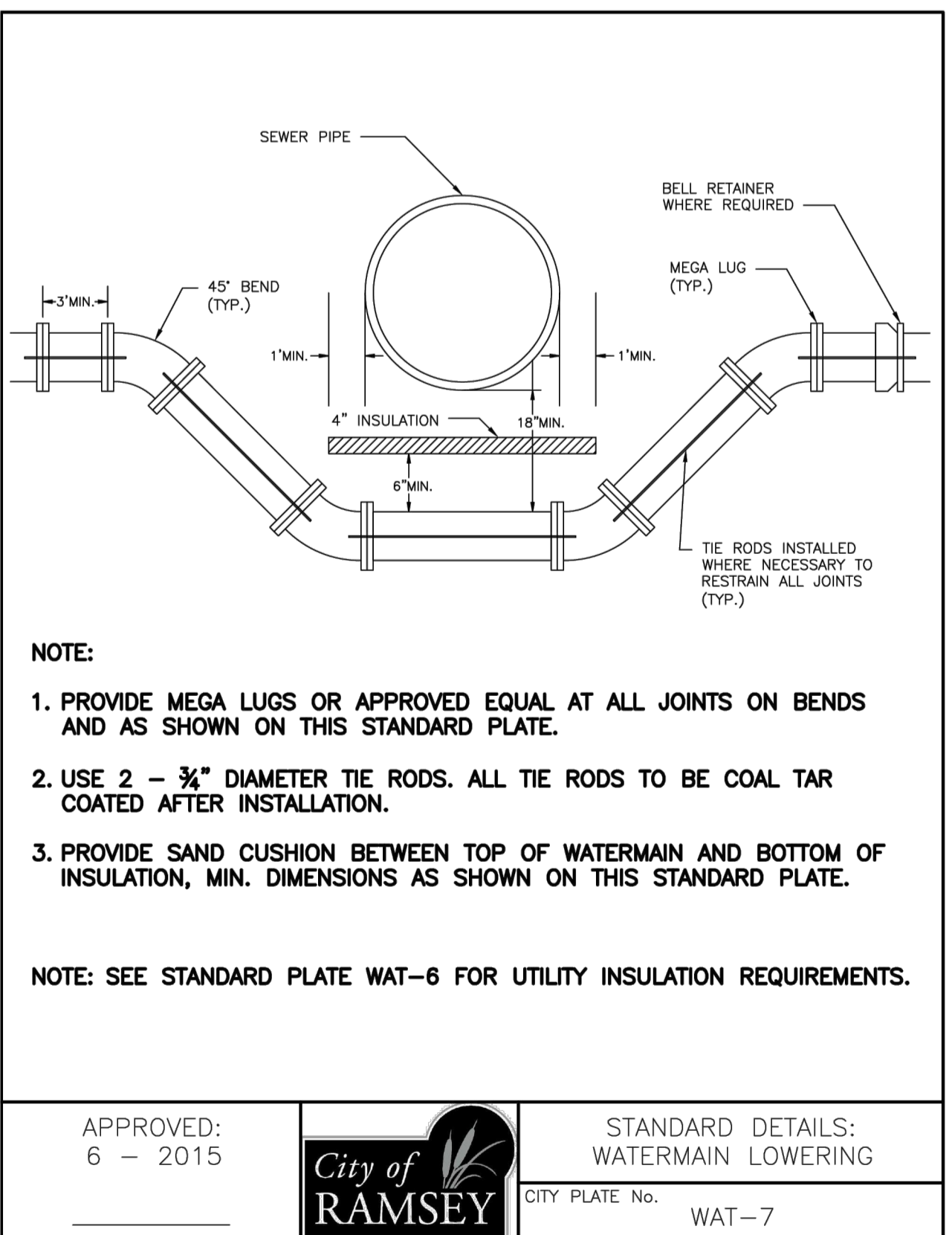
D5 WATERMAIN INSULATION NO SCALE



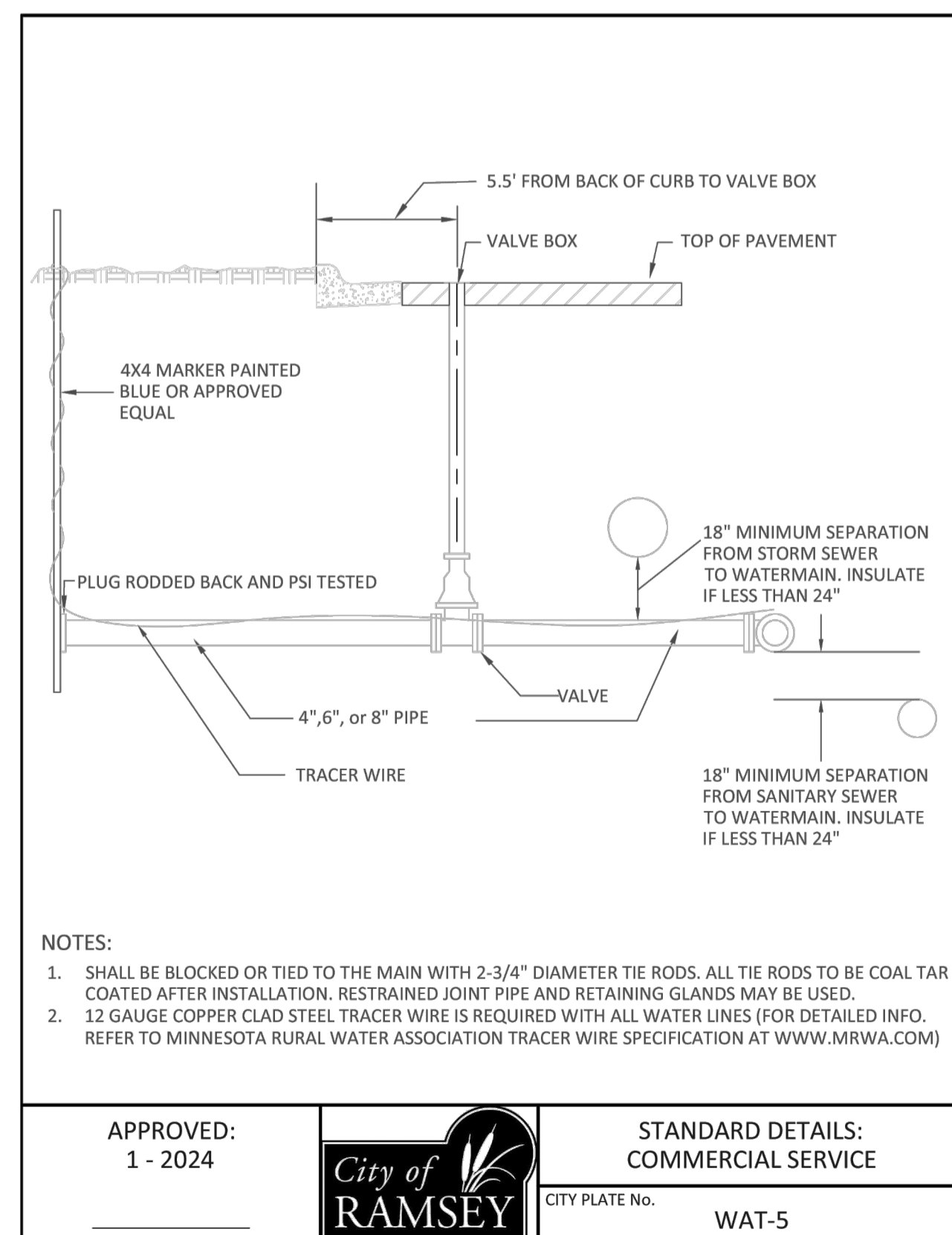
A1 SANITARY MANHOLE NO SCALE



A2 SANITARY SEWER CLEANOUT NO SCALE



A4 WATERMAIN LOWERING NO SCALE



A5 COMMERCIAL WATER SERVICE NO SCALE



NOT FOR CONSTRUCTION

DETAILS
C503

PROJECT NO.
BFO25001

