

Councilmember _____ introduced the following resolution and moved for its adoption:

RESOLUTION #25-218

**RESOLUTION VACATING EASEMENTS AND RIGHT-OF-WAY
IN BUSINESS PARK 95 SECOND AND EIGHTH ADDITIONS**

RECITALS

WHEREAS, Zero Zone Refrigeration, LLC, (the “Applicant”) has requested the vacation of street right-of-way and drainage and utility easements on properties legally described as:

Lot 1, Block 1, Business Park 95 Second Addition, Anoka County, Minnesota;

Lot 1, Block 1, Business Park 95 Eighth Addition, Anoka County, Minnesota; and

Outlot A, said Business Park 95 Eighth Addition, Anoka County, Minnesota.

(the “Subject Property”); and

WHEREAS, a public hearing, pursuant to Section 106-260 (Easement Vacation) of the Ramsey City Code and Section 12.6 of the City Charter, was held on September 9, 2025, and that said public hearing was properly advertised and that the minutes of said public hearing are available; and

WHEREAS, the Ramsey Engineering Department has reviewed the request and has no objection to the easement vacation;

WHEREAS, some utility companies have noted that they may have facilities, partially, in the affected area;

WHEREAS, that new easements will be dedicated with the recording of the plat known as Zero Zone Addition; and

WHEREAS, the City Council held a public hearing regarding vacating these easements and right-of-way on September 23, 2025.

FINDINGS OF FACT

1. That the easement vacation will not violate the intent and purpose of the Comprehensive Plan.
2. That the easement vacation eliminates an unnecessary easement.

NOW THEREFORE, BE IT RESOLVED BY THIS CITY COUNCIL OF THE CITY OF RAMSEY, ANOKA COUNTY, STATE OF MINNESOTA, as follows: That the Ramsey City Council hereby approves of vacating the following:

1. The Drainage and Utility Easements as dedicated on Lot 1, Block 1, Business Park 95 Second Addition, Anoka County, Minnesota;
(See Attached Exhibit A)
2. That part of 140th Avenue NW as dedicated on the plat of Business Park 95 Eighth Addition, Anoka County, Minnesota, lying north of the westerly extension of the south line of Outlot A, said Business Park 95 Eighth Addition;
(See Attached Exhibit B)
3. The Drainage and Utility Easements as dedicated on Lot 1, Block 1, Business Park 95 Eighth Addition, Anoka County, Minnesota.
(See Attached Exhibit C).

The motion for the adoption of the foregoing resolution was duly seconded by Councilmember _____, and upon vote being taken thereon, the following voted in favor thereof:

and the following voted against the same:

and the following abstained:

and the following were absent:

Whereupon said resolution was declared duly passed and adopted by the Ramsey City Council this the 23rd day of September, 2025.

Mayor

ATTEST:

City Clerk

EXHIBIT A

Bunker Lake Boulevard NW (County State Aid Highway No. 116)

N89°38'17"E 300.00

Easement Vacation Description

July 29, 2025

The Drainage and Utility Easements as dedicated on Lot 1, Block 1, BUSINESS PARK 95 SECOND ADDITION, Anoka County, Minnesota.

BUSINESS PARK 95 EIGHTH ADDITION

S0°19'59"W 726.00

S0°19'59"W 726.00

BUSINESS

Lot 1

PARK

Block 1

95

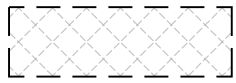
SECOND

ADDITION

ANOKA ENTERPRISE PARK THIRD ADDITION

S89°38'17"W 300.00

BUSINESS PARK 95
SEVENTH ADDITION



DENOTES
VACATION
EASEMENT
20,120 ± SQ. FT.



SCALE IN FEET

I hereby certify that this survey, plan or report was prepared by me or under my direct supervision and that I am a duly Licensed Land Surveyor under the laws of the State of Minnesota.

Max L. Stanislawski

07/29/25

Max L. Stanislawski - PLS

License No. 48988

Date

LOUCKS

Loucks Project No. 250341

EXHIBIT C

Bunker Lake Boulevard NW (County State Aid Highway No. 116)

N89°38'17"E 376.49

Easement Vacation

Description

July 29, 2025

The Drainage and Utility Easements as dedicated on Lot 1, Block 1, BUSINESS PARK 95 EIGHTH ADDITION, Anoka County, Minnesota.

BUSINESS

Lot 1

PARK

Block 1

95

EIGHTH

ADDITION

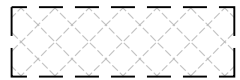
PARK 67 INDUSTRIAL PARK

N0°19'59"E 808.59

S0°19'59"W 686.00

BUSINESS PARK 95 SECOND ADDITION

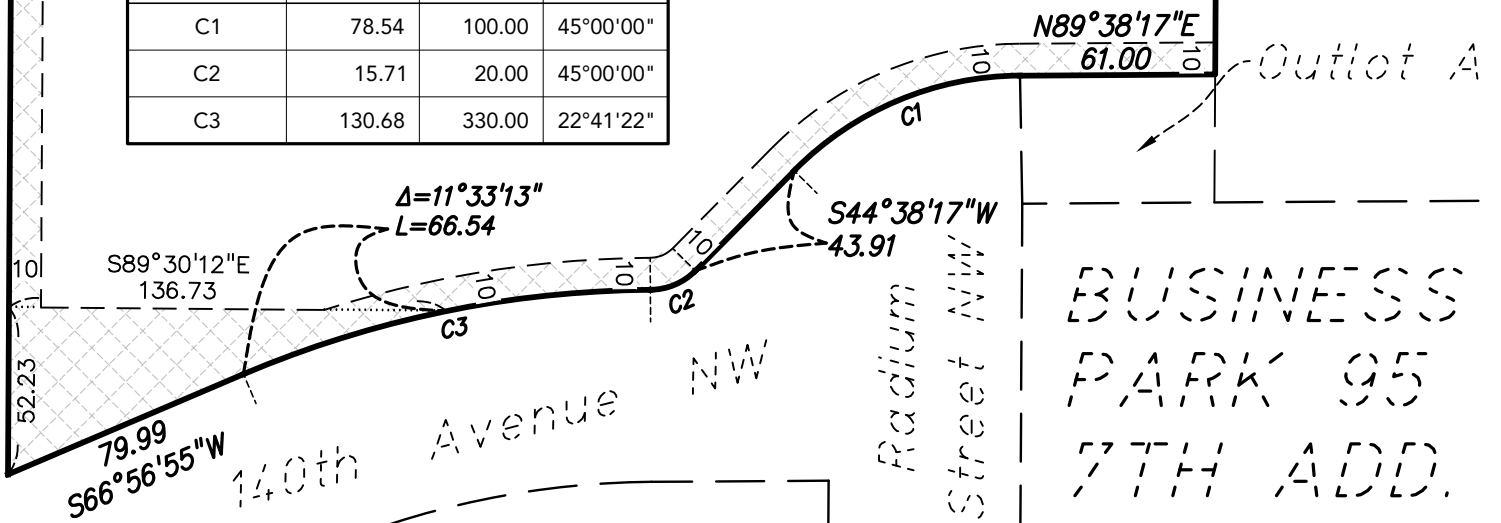
CURVE DATA			
SEGMENT	LENGTH	RADIUS	DELTA
C1	78.54	100.00	45°00'00"
C2	15.71	20.00	45°00'00"
C3	130.68	330.00	22°41'22"



DENOTES VACATION EASEMENT 17,305 ± SQ. FT.



0 60
SCALE IN FEET



I hereby certify that this survey, plan or report was prepared by me or under my direct supervision and that I am a duly Licensed Land Surveyor under the laws of the State of Minnesota.

Max L. Stanislawski

07/29/25

Max L. Stanislawski - PLS

License No. 48988

Date



Loucks Project No. 250341