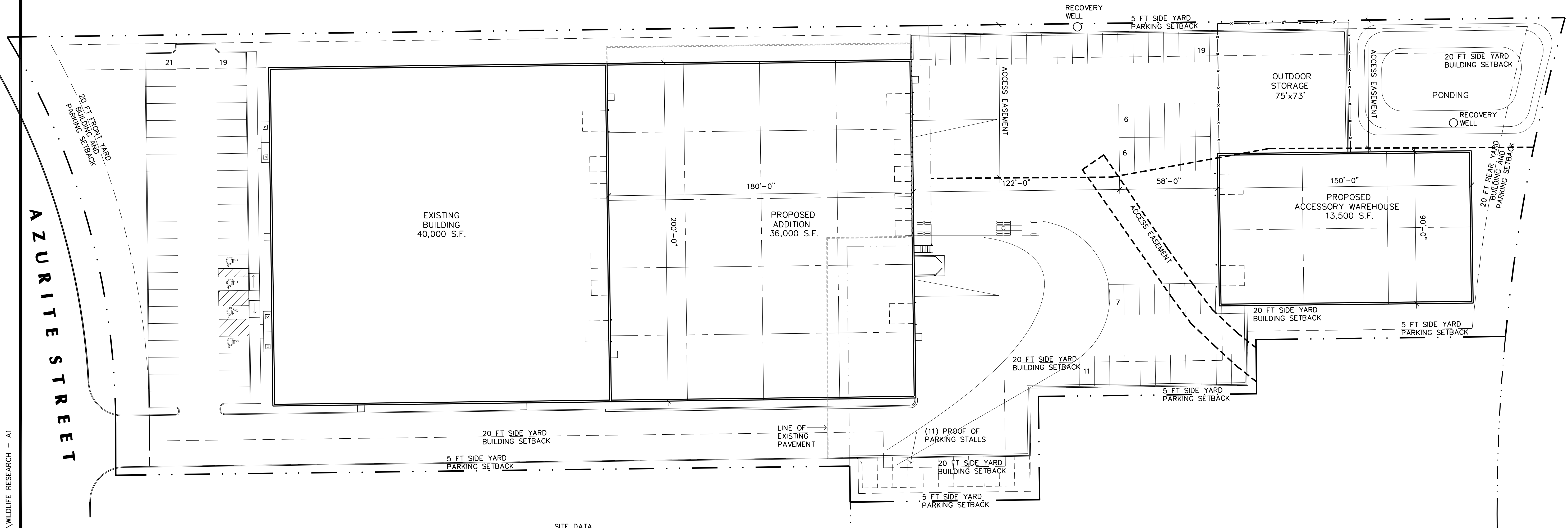


AZURITE STREET

SUNFISH LAKE BLVD NW



SITE DATA
 LOT SIZE - 207,596 S.F. 4.77 ACRES
 ZONING - I1 LIGHT INDUSTRIAL
 BUILDING - 40,000 S.F. EXISTING OFFICE/WAREHOUSE
 - 36,000 S.F. WAREHOUSE ADDITION
 - 13,500 S.F. ACCESSORY WAREHOUSE BUILDING
 BLDG COVER - 88,150/207,596 = 42.5% < 50% MAX
 IMPERVIOUS - 80% MAX

PARKING DATA
 OFFICE
 4,125 S.F. @ 1/300 = 14 STALLS
 WAREHOUSE
 71,875 S.F. @ 1/1,000 = 72 STALLS
 WAREHOUSE
 13,500 S.F. @ 1/1,000 = 14 STALLS
 TOTAL STALLS REQUIRED = 100 STALLS
 TOTAL STALLS PROVIDED = 100 STALLS

1 SITE PLAN
 A1 SCALE: 1" = 40'-0"



LAMPERT ARCHITECTS

420 Summit Avenue
 St. Paul, MN 55102
 Phone: 763.755.1211 Fax: 763.757.2849
 lampert@lampert-arch.com

ARCHITECT CERTIFICATION:
 I HEREBY CERTIFY THAT THIS PLAN, SPECIFICATION OR REPORT WAS PREPARED BY ME OR UNDER MY DIRECT SUPERVISION AND THAT I AM A DULY LICENSED ARCHITECT UNDER THE LAWS OF THE STATE OF MINNESOTA.

PRELIMINARY
 NOT FOR CONSTRUCTION



Commercial Design and Construction
 1100 Mendota Heights Road
 Mendota Heights, MN 55120
 Ph: 651-681-0200
 Fax: 651-681-0205

ADDITION FOR WILDLIFE RESEARCH
 14485 Azurite St NW, Ramsey, Minnesota

Copyright 2025
 Leonard Lampert Architects Inc.
 Project Designer: JAMES B
 Drawn By: ALE
 Checked By: LL
 Revisions

11/4/25	PRELIMINARY

SITE PLAN

Sheet Number

A1