



157TH AVE. NW

VARIOLITE ST. NW

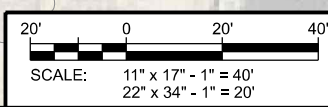
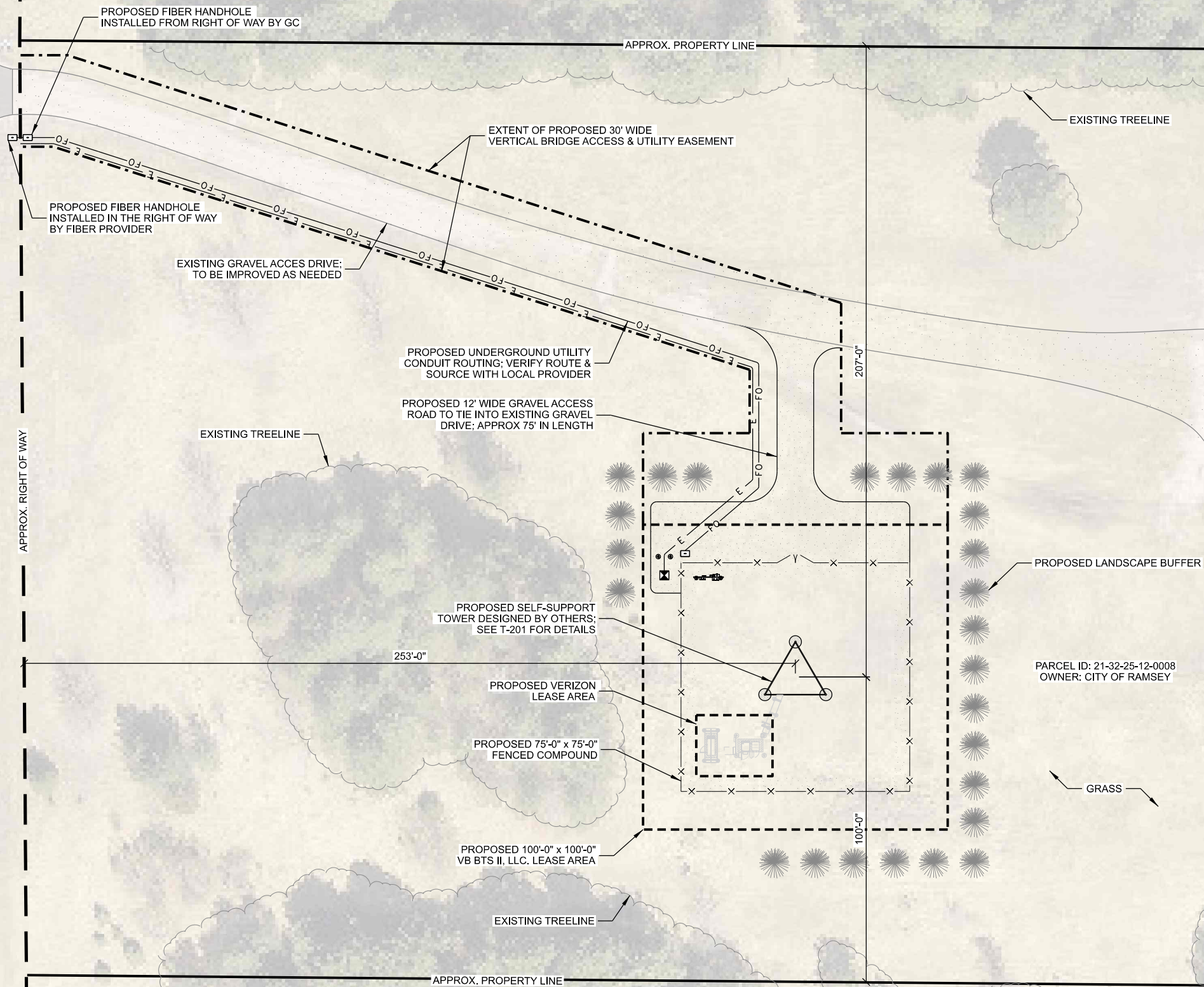
APPROX. RIGHT OF WAY

APPROX. RIGHT OF WAY



A

AERIAL OVERVIEW OF SITE



CONSULTANT:
Edge
 Consulting Engineers, Inc.
 624 WATER STREET
 PRAIRIE DU SAC, WI 53578
 608.644.1449 VOICE
 608.644.1549 FAX
 www.edgeconsult.com

CLIENT:
verticalbridge
 VERTICAL BRIDGE DEVELOPMENT, LLC
 750 PARK OF COMMERCE DRIVE
 SUITE 200
 BOCA RATON, FL 33487

verizon
 10801 BUSH LAKE ROAD
 BLOOMINGTON, MN 55438

SITE PLAN
ARMSTRONG (US-MN-5156)
RAMSEY, MINNESOTA

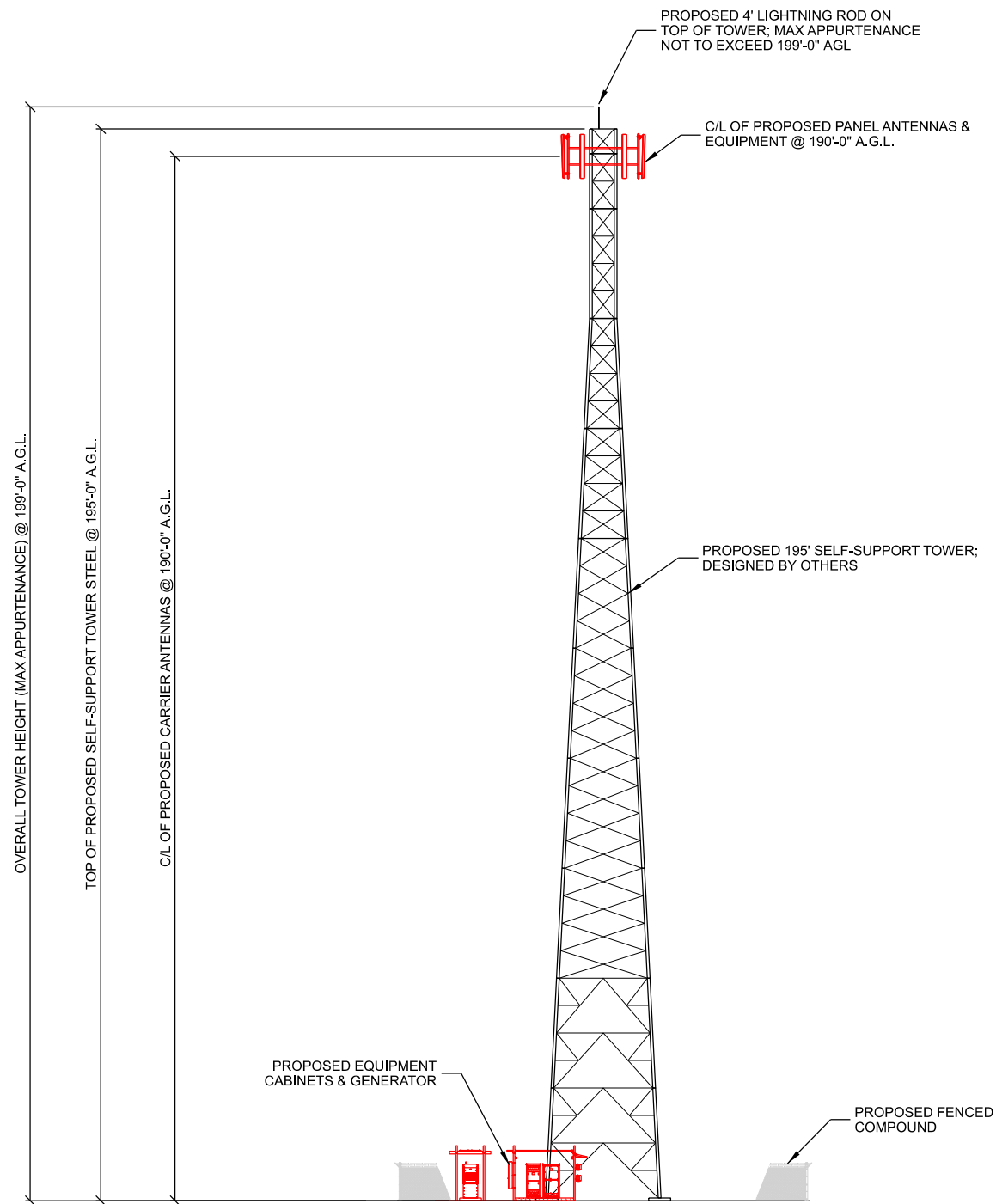
SHEET TITLE:

SUBMITTAL:

INT.	DATE:	DESCRIPTION:
LAB	08/01/24	SITE SKETCH

CHECKED BY:	ADP
PLOT DATE:	8/2/2024
PROJECT NUMBER:	40698
SET TYPE:	PRELIM. DWGS.
SHEET NUMBER:	C-101

L:\4069\40698\Design\CAD\Site Sketch\IP\T-201.dgn



NOTES:
 1. ANCHOR BOLTS AND NUTS TO BE MARKED WITH INDELIBLE INK, 1/8" LINE.

A SITE ELEVATION
 SCALE: 11" x 17" - 1" = 30'-0"
 22" x 34" - 1" = 15'-0"

CONSULTANT:
Edge
 Consulting Engineers, Inc.
 624 WATER STREET
 PRAIRIE DU SAC, WI 53578
 608.644.1449 VOICE
 608.644.1549 FAX
 www.edgeconsult.com

CLIENT:
verticalbridge
 VERTICAL BRIDGE DEVELOPMENT, LLC
 750 PARK OF COMMERCE DRIVE
 SUITE 200
 BOCA RATON, FL 33487

verizon
 10801 BUSH LAKE ROAD
 BLOOMINGTON, MN 55438

SITE ELEVATION
ARMSTRONG (JS-MN-5156)
RAMSEY, MINNESOTA

SHEET TITLE:

INT.	DATE:	DESCRIPTION:
LAB	08/01/24	SITE SKETCH

CHECKED BY:	ADP
PLOT DATE:	8/2/2024
PROJECT NUMBER:	40698
SET TYPE:	PRELIM. DWGS.
SHEET NUMBER:	T-201