

• IMAGERY CREDIT: GOOGLE EARTH, LANDSAT/COPERNICUS-2017

MISSISSIPPI SKYWAY - CITY OF RAMSEY

01 PROPOSED CIRCULAR RAMP @ SOUTH SIDE OF HIGHWAY 10



BRIDGE PIER #1 - SEE AESTHETIC TREATMENT BOARD FOR MATERIAL DETAILS

STORMWATER TREATMENT BIORETENTION AREA

ORNAMENTAL METAL RAILING
• 4'-6" HEIGHT ABOVE WALKING SURFACE
• 10'-0" MAXIMUM PANEL LENGTH

HELIX DECKING (SEE SECTION FOR DETAIL)

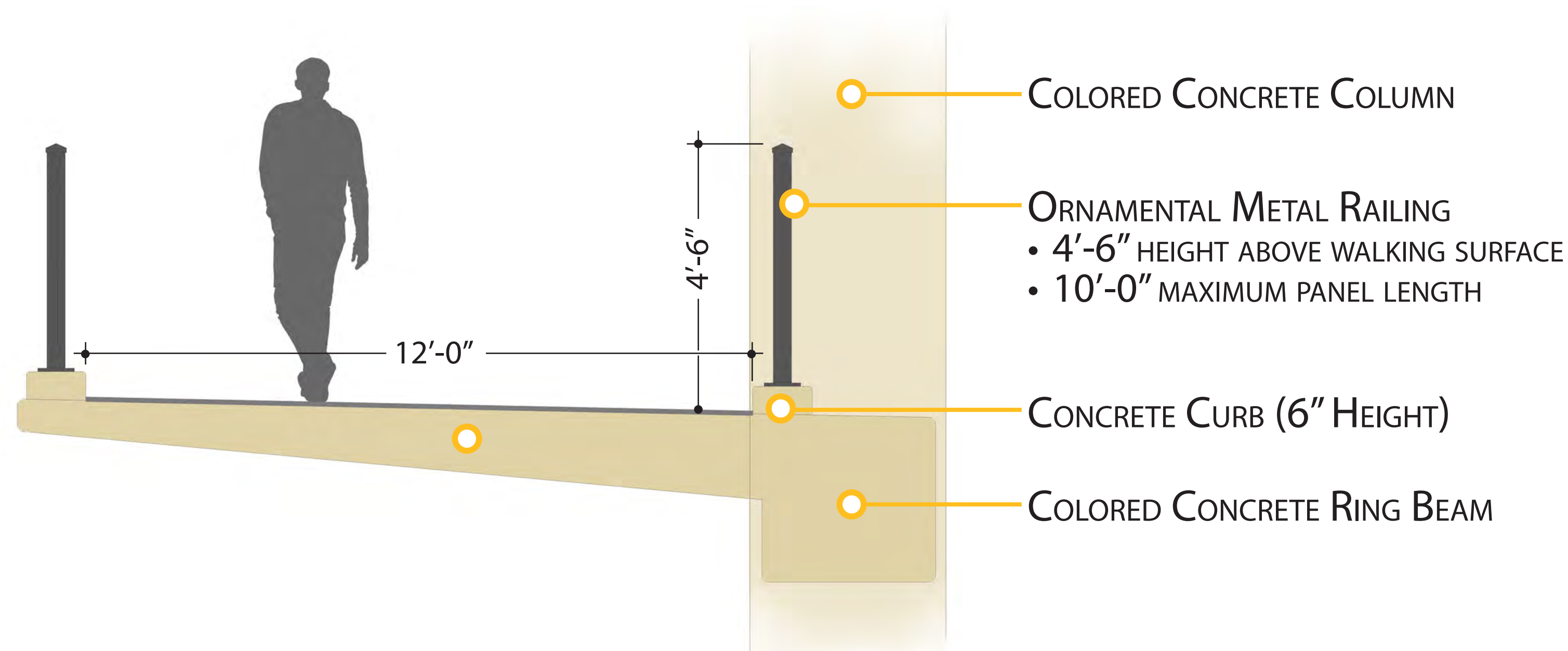
COLORED CONCRETE COLUMN

RETAINING WALL
• UTILIZES BRICK & FORM LINER PATTERN THAT MATCH RAMSEY COR AND ARMSTRONG BLVD. BRIDGE

WAYFINDING SIGNAGE OR MONUMENT
SIGNAGE LOCATION



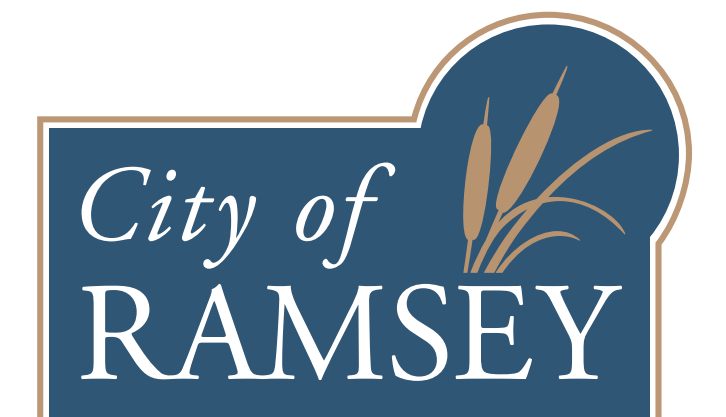
DAYTIME CONCEPT RENDER OF HELIX RAMP (SEE SHEET 01 FOR LOCATION)



NIGHTTIME CONCEPT RENDER OF HELIX RAMP

MISSISSIPPI SKYWAY - CITY OF RAMSEY

02 PROPOSED HELIX RAMP @ SOUTH SIDE OF HIGHWAY 10

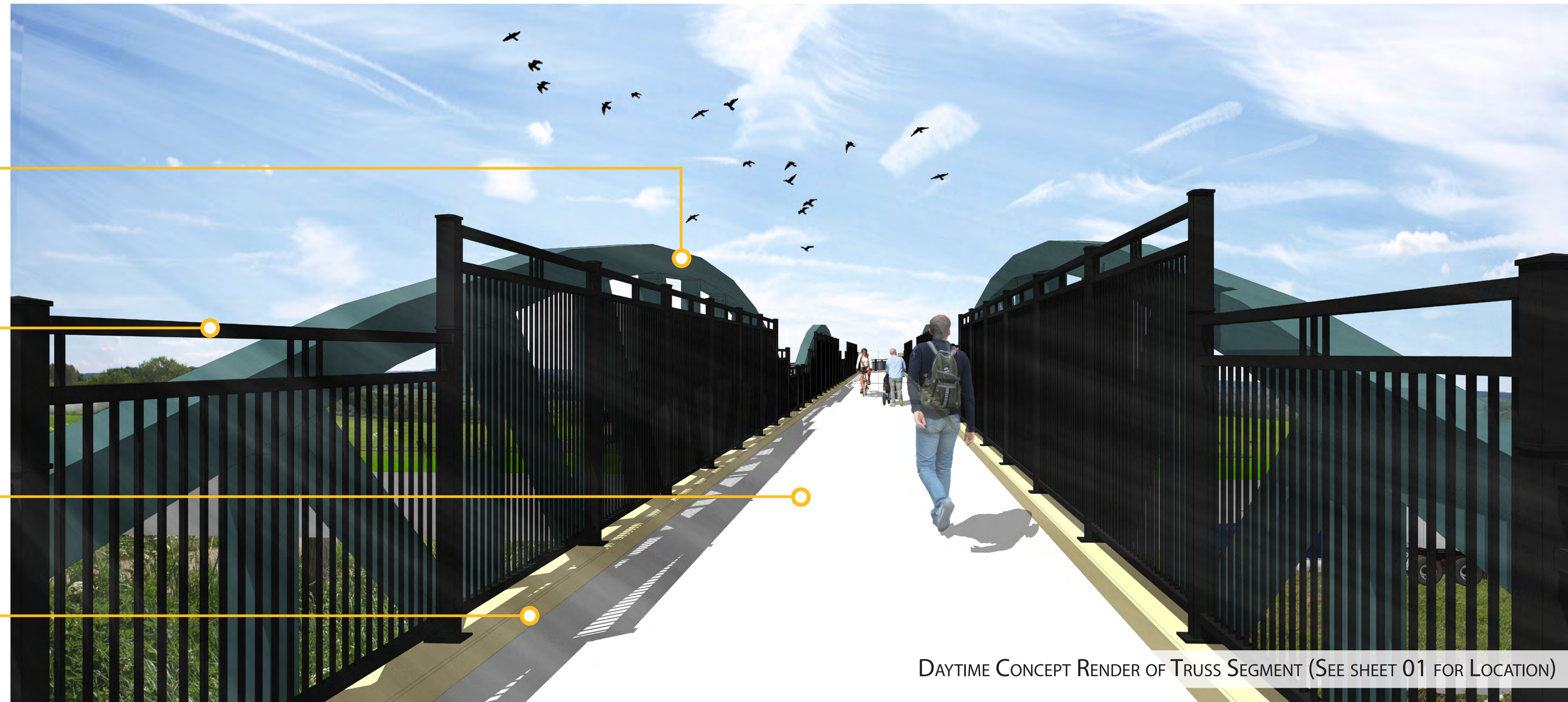


ORNAMENTAL METAL TRUSS ACROSS HIGHWAY 10
• COLOR TO MATCH RAMSEY COR FACILITY

ORNAMENTAL METAL RAILING (HEIGHT VARIES)
• TRANSITIONS FROM 4'-6" TO 8'-0" OVER ROADWAY

PLAIN CONCRETE DECKING SURFACE

6" CONCRETE CURB



DAYTIME CONCEPT RENDER OF TRUSS SEGMENT (SEE SHEET 01 FOR LOCATION)



NIGHT CONCEPT RENDER ALTERNATIVE A



NIGHT CONCEPT RENDER ALTERNATIVE B

ORNAMENTAL CANOPY @ ENTRY DOOR TO TRANSIT CENTER
• COLOR TO MATCH RAMSEY COR FACILITY
• SEE SHEET 07 FOR DESIGN CONCEPT

OVERHEAD LED LIGHTING ALONG BRIDGE
• STYLE TO MATCH RAMSEY COR STATION

ORNAMENTAL METAL RAILING (HEIGHT VARIES)
• 4'6" HEIGHT, TRANSITIONING TO 8' HEIGHT @ HWY. 10

PLAIN CONCRETE DECKING SURFACE

6" CONCRETE CURB



DAYTIME CONCEPT RENDER OF TRANSIT STATION CONNECTION (SEE SHEET 01 FOR LOCATION)



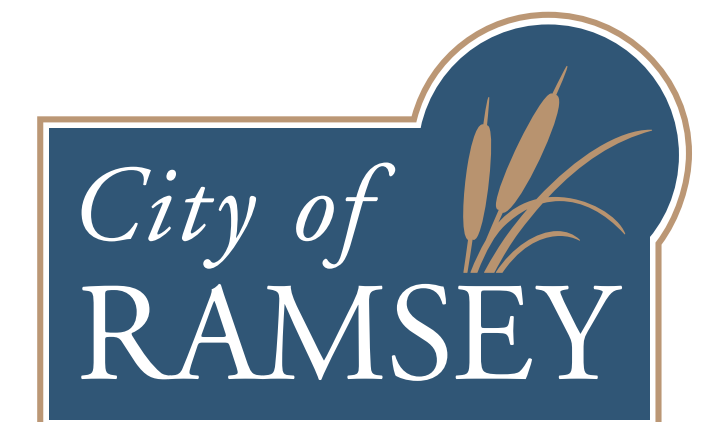
NIGHT CONCEPT RENDER ALTERNATIVE A



NIGHT CONCEPT RENDER ALTERNATIVE B

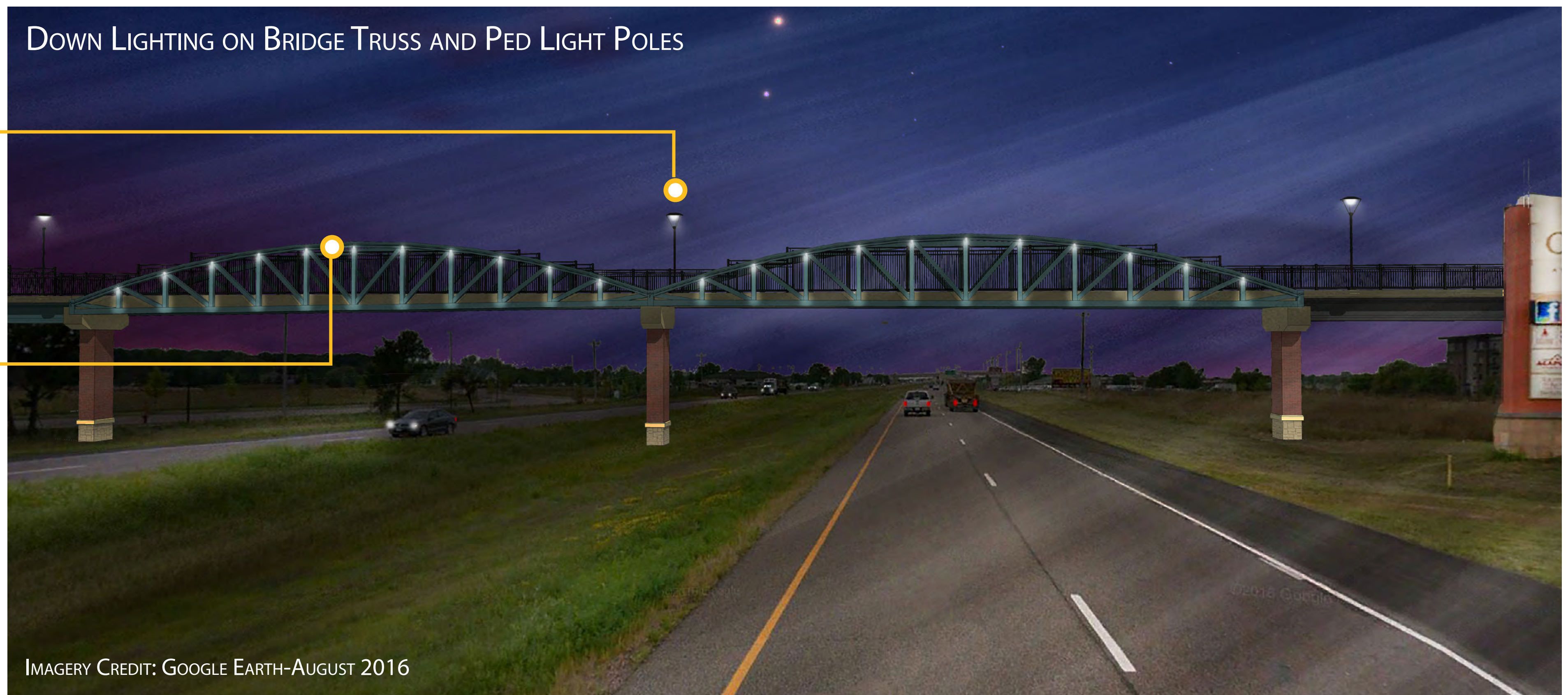
MISSISSIPPI SKYWAY - CITY OF RAMSEY

04 BRIDGE SEGMENT NEAR RAMSEY COR TRANSIT CENTER



LED POLE LIGHTING (STYLE TO MATCH RAMSEY METRO STATION PLATFORM LIGHTING)

LED DOWN LIGHTS ON EXTERIOR OF TRUSS HIGHLIGHTING VERTICAL ELEMENTS

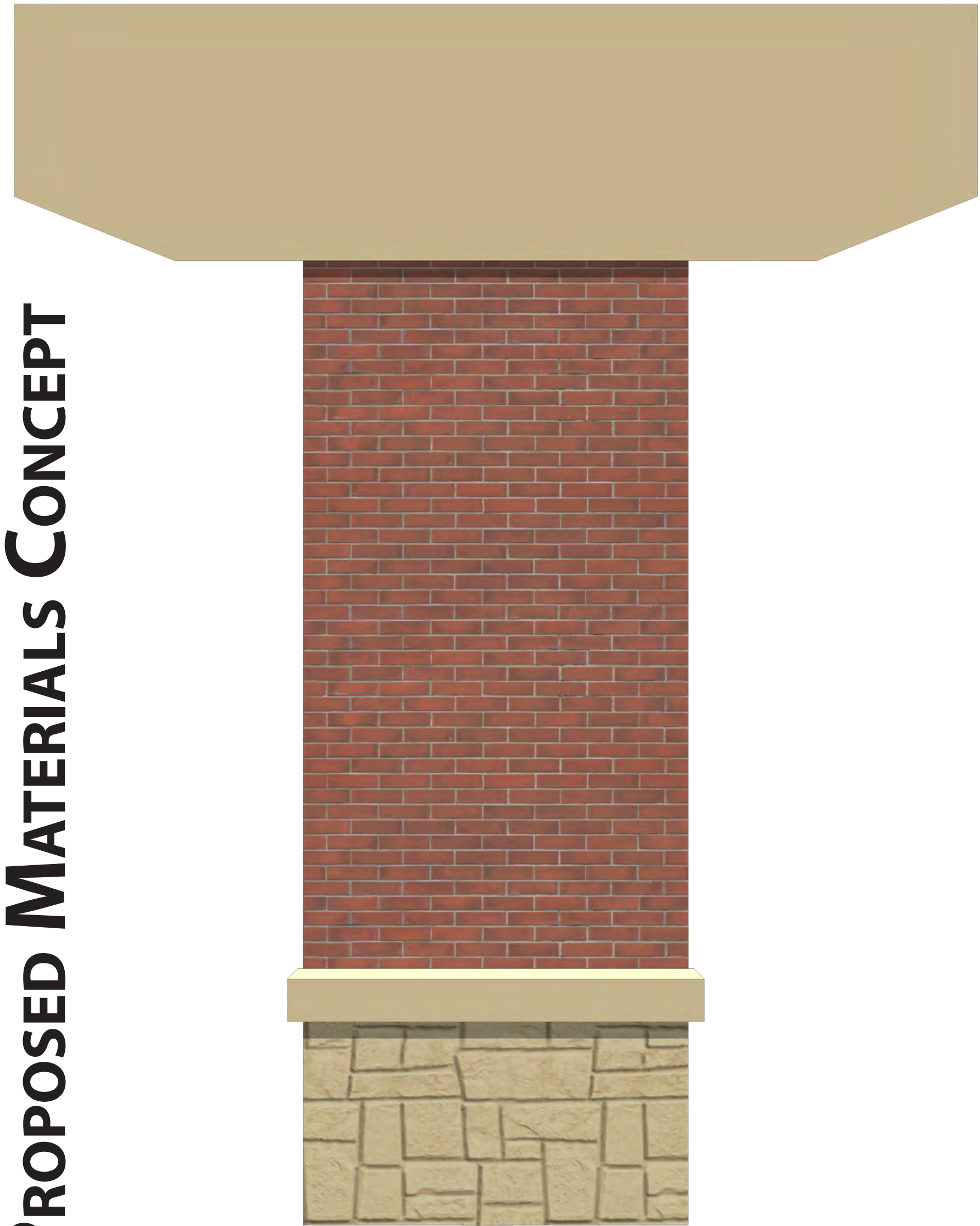
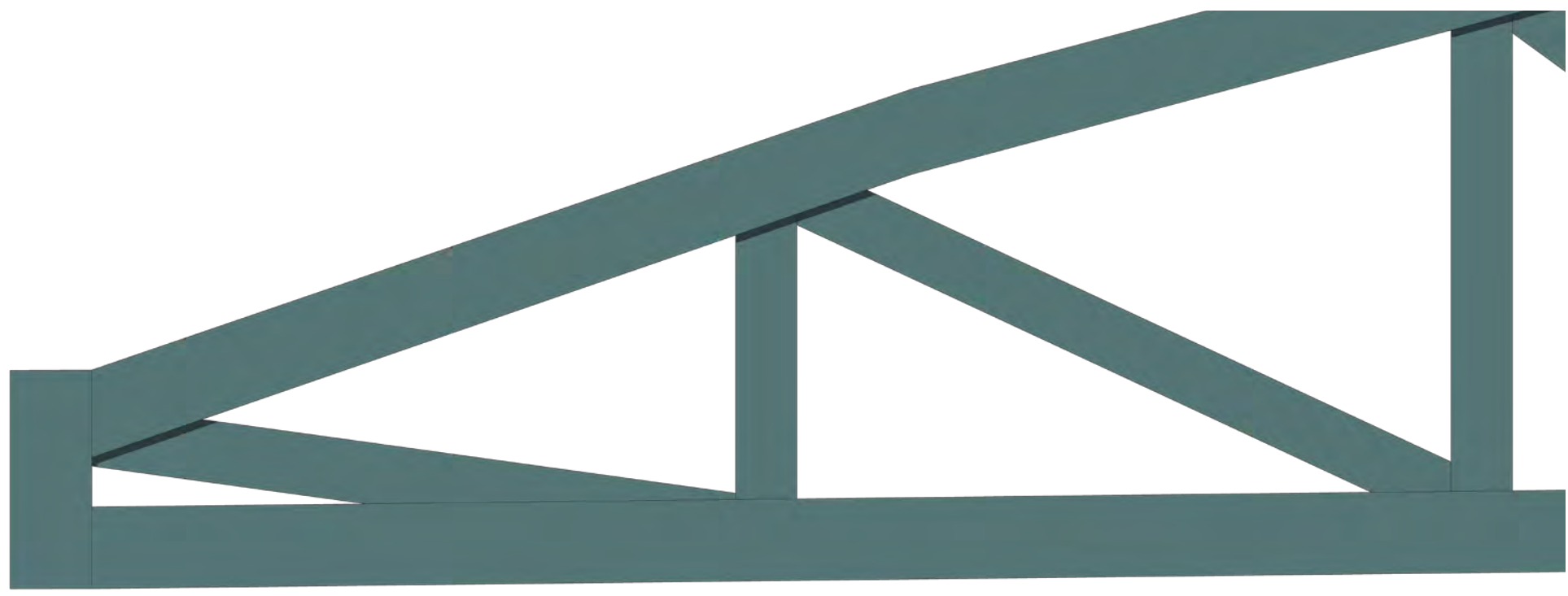


ROPE LIGHTING ON TRUSS AND HANDRAIL LIGHTING

HANDRAILS RUNNING THE ENTIRE BRIDGE LENGTH WITH BUILT IN DOWN-LIGHTING

LED ROPE LIGHTING IN METAL CHANNEL LIGHTING EXTERIOR OF METAL TRUSSES





PROPOSED MATERIALS CONCEPT

HIGHWAY 10 BRIDGE MATERIALS

- COLORED CONCRETE - FEDERAL STANDARD COLOR No. 33522
- BRICK COLOR - ENDICOTT TYPE 'MEDIUM IRONSPOT #7
- MORTAR JOINTS - FEDERAL STANDARD COLOR No. 33578

- CONCRETE COLUMN BASES W/ STONE FORM LINER PATTERN
- ORNAMENTAL RAILING - FEDERAL STANDARD COLOR No. 26134 (DARK GRAY, SEMI-GLOSS)



RAMSEY COR MATERIALS

- COLORED CONCRETE COLOR - TO BE DETERMINED
- BRICK COLOR - TO BE DETERMINED

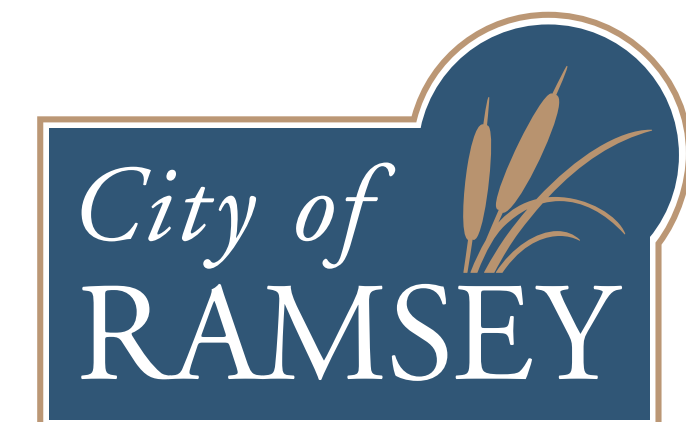
- CONCRETE COLUMN BASES W/ STONE FORM LINER PATTERN
- ORNAMENTAL RAILING/POST COLOR - TO BE DETERMINED

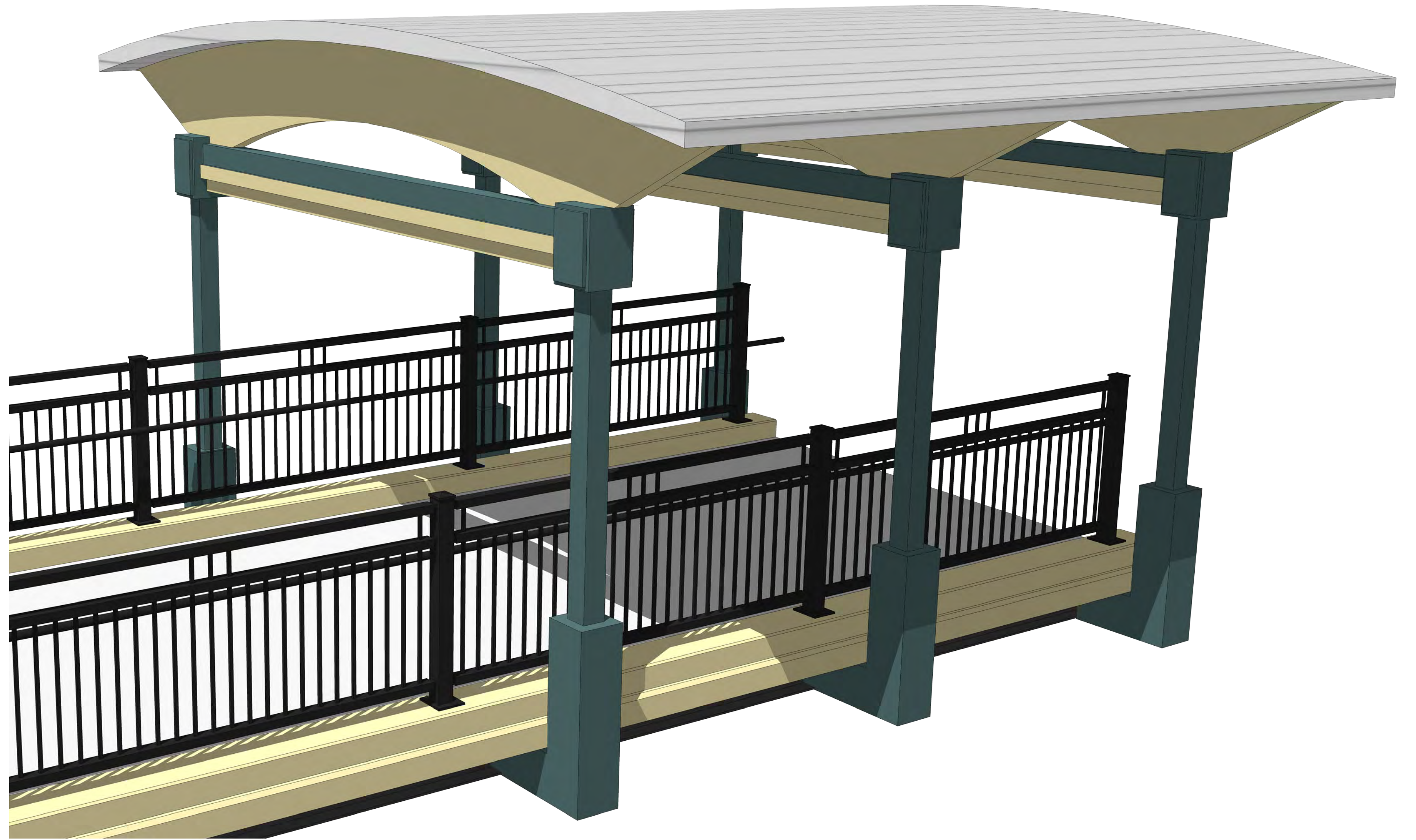


PROPOSED SKYWAY PIER MATERIALS TO MATCH RAMSEY COR PALLETTE, WHILE CLOSELY MIMICKING AESTHETICS OF HIGHWAY 10 BRIDGE @ ARMSTRONG.

MISSISSIPPI SKYWAY - CITY OF RAMSEY

06 MATERIAL PRECEDENCE EXAMPLES





MISSISSIPPI SKYWAY - CITY OF RAMSEY

07

RAMSEY COR BRIDGE CONNECTION AWNING

