

# THE WATERFRONT



RAMSEY, MN  
JULY 10, 2025

DF/ DAMON FARBER



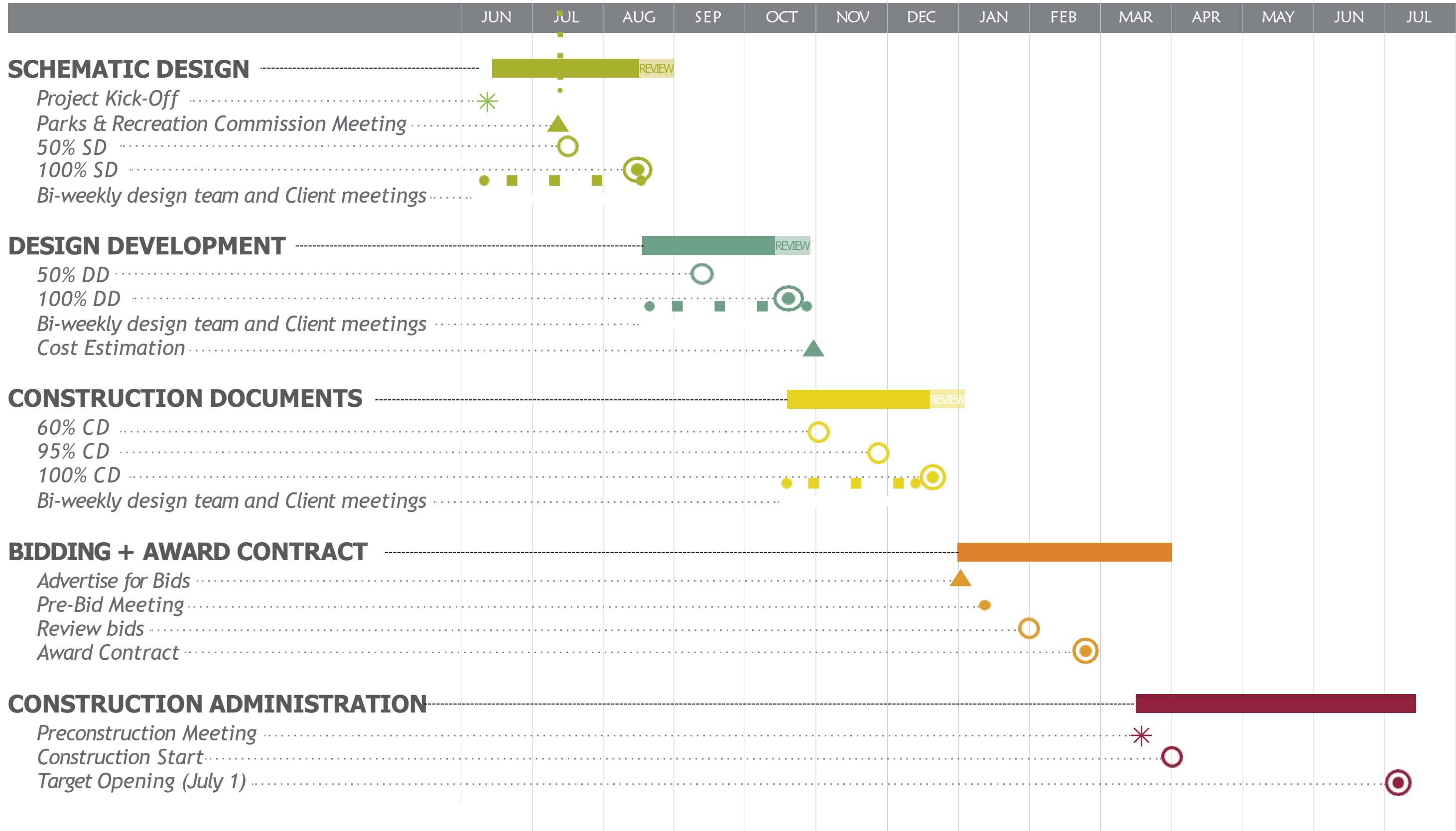
PUBLIC WORKS COMMITTEE UPDATE –  
A PROGRESS REPORT

# SCHEDULE

WE ARE HERE

2025

2026



# PROJECT STATUS UPDATE

## CONSTRUCTION BUDGET

- \$3 Million

## PROJECT SCOPE

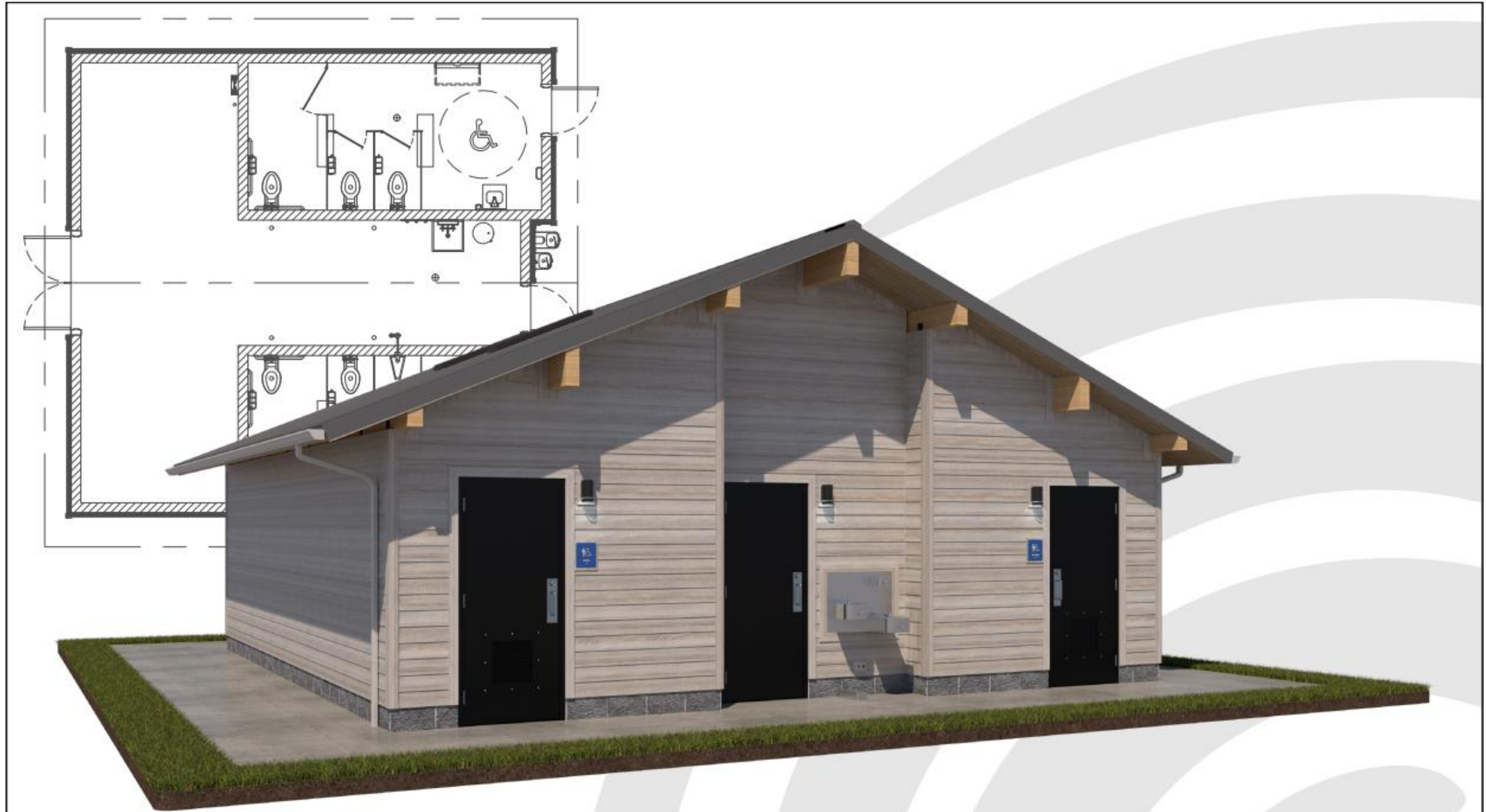
- 12,500 Sq Foot Water Play Space
- Surrounding Park Context: Including Walkways, Landscaping, Seating, Lighting, Fencing, Etc.
- Shaded Pavilion/Pergola Space(S) For Group Rental
- Dozens Of Jets To Accommodate Water Play For 400+ Children
- Run-Through System (Not Recirculated Water)
- Vault For Mechanicals – (In Earthen Berm With Man Door Preferred Or Below Ground With Hatch)
- Site Lighting
- Led Lighting In Water Jets
- Power Supply To Site, Mechanical Vault, Site Lighting
- Dedicated Restrooms (not in current scope but newly required by MDH)

# PROJECT CONSIDERATIONS

## Design Drivers

- Develop project that can seamlessly connect to future community building
- Develop a design visible from the street intersection
- Design a pass-through aquatic engineered system
- Provide “architectural water play” in lieu of playground appearance splash pad
- Provide continuous opportunity to engage with the water as it flows to the forebay
- Include reservable/rentable pavilion spaces for revenue generation
- Maintain views to lake while providing sense of intimacy and addressing exposure to wind

# PREFABRICATED FACILITY



ROMTEC

18240 NORTH BANK ROAD - ROSEBURG, OR 97470  
503.638.0000 FAX 503.638.0002



THE WATERFRONT

RAMSEY, MINNESOTA

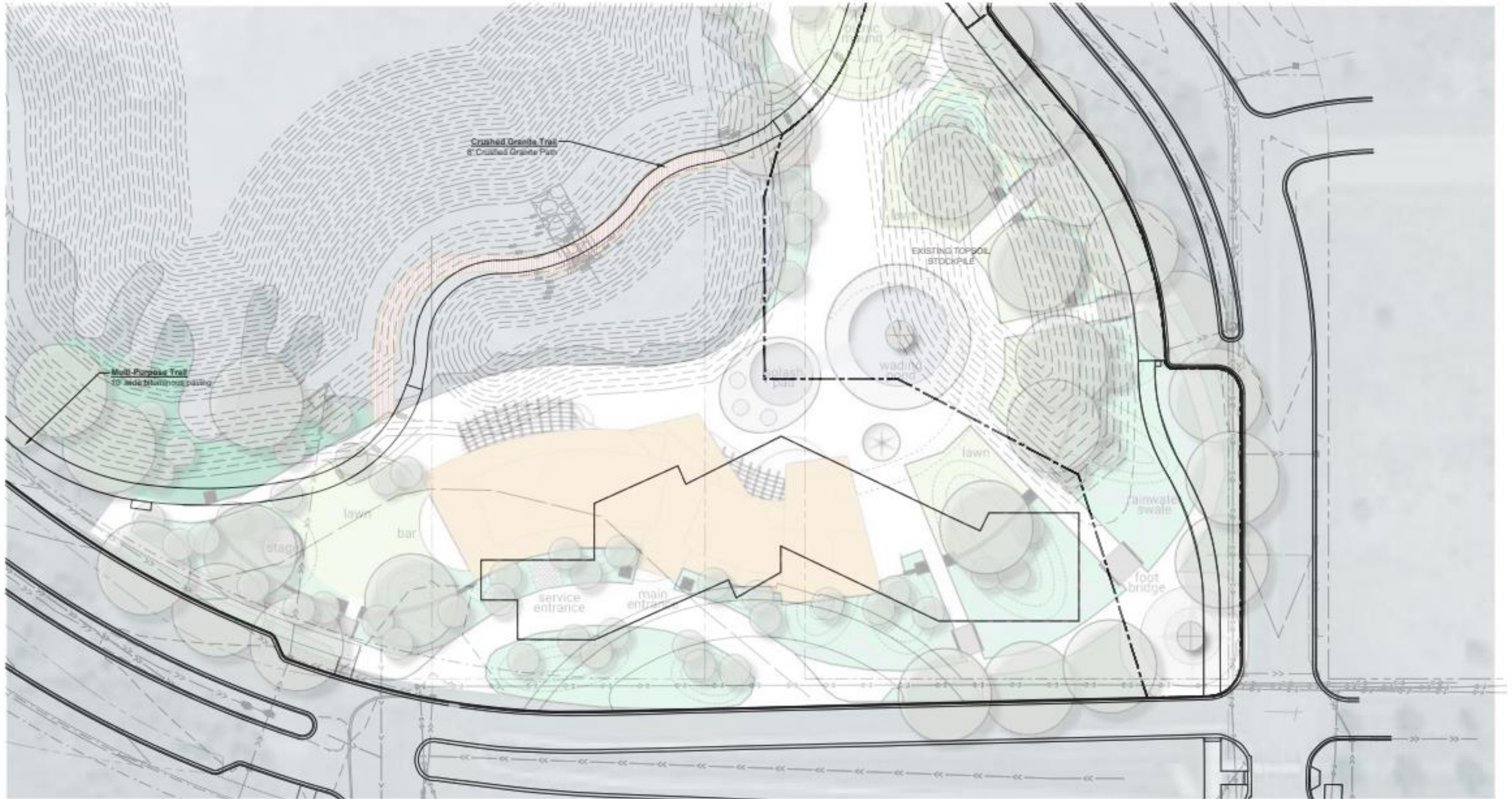
# PROJECT PRECEDENTS



# PROJECT PRECEDENTS

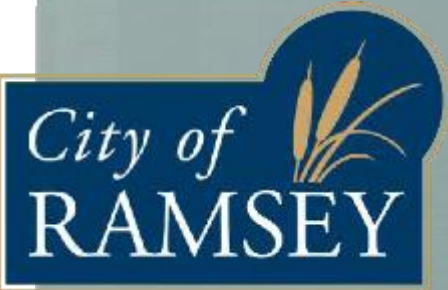


# EARLY CONCEPT



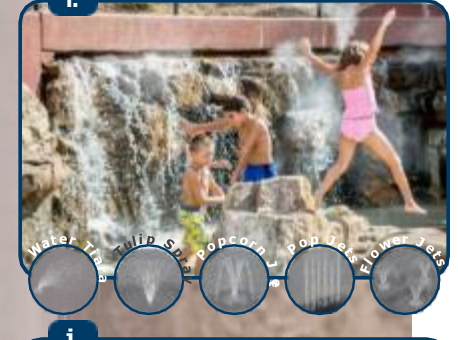
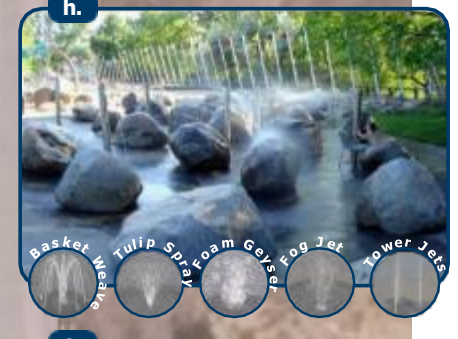
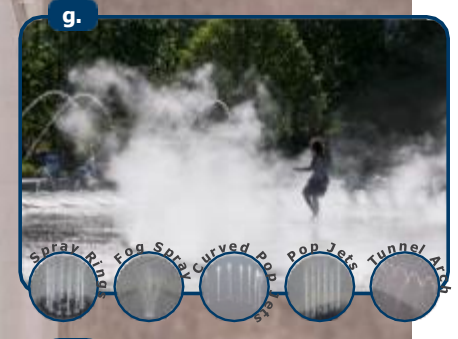
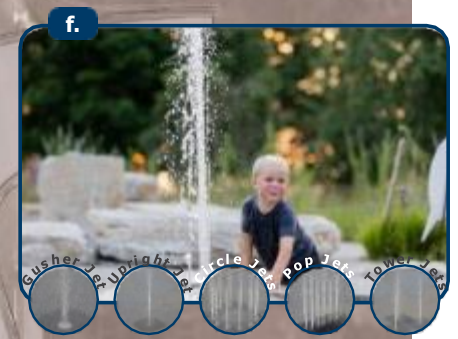
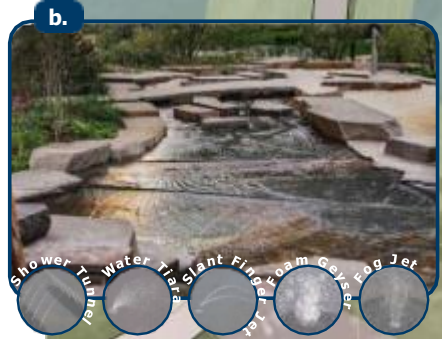
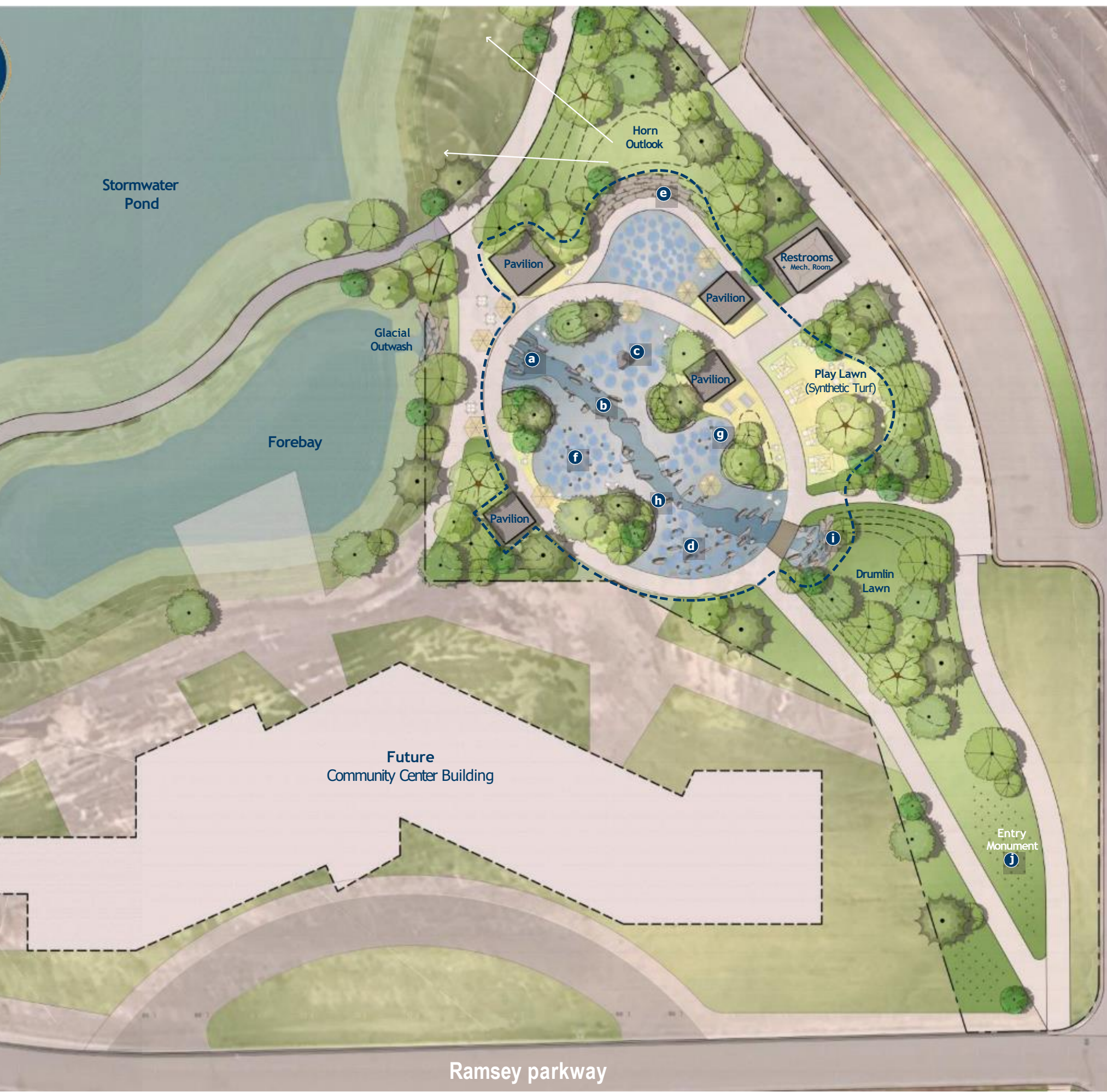
# ARCHITECTURE





# The waterfront

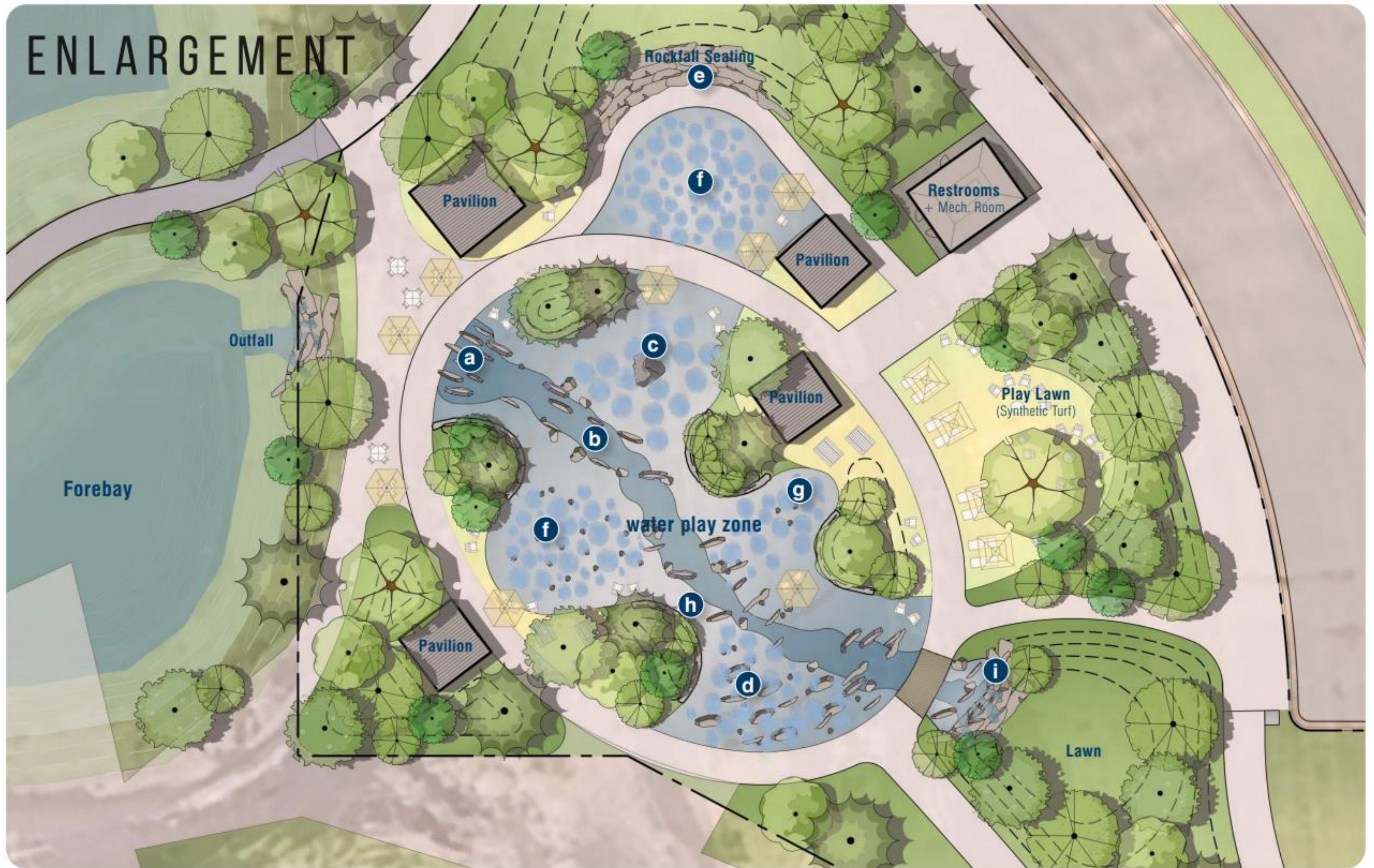
Total Water Play: 22,250 sf



Center Street

Ramsey parkway

# ENLARGEMENT



# STONE CONSIDERATIONS



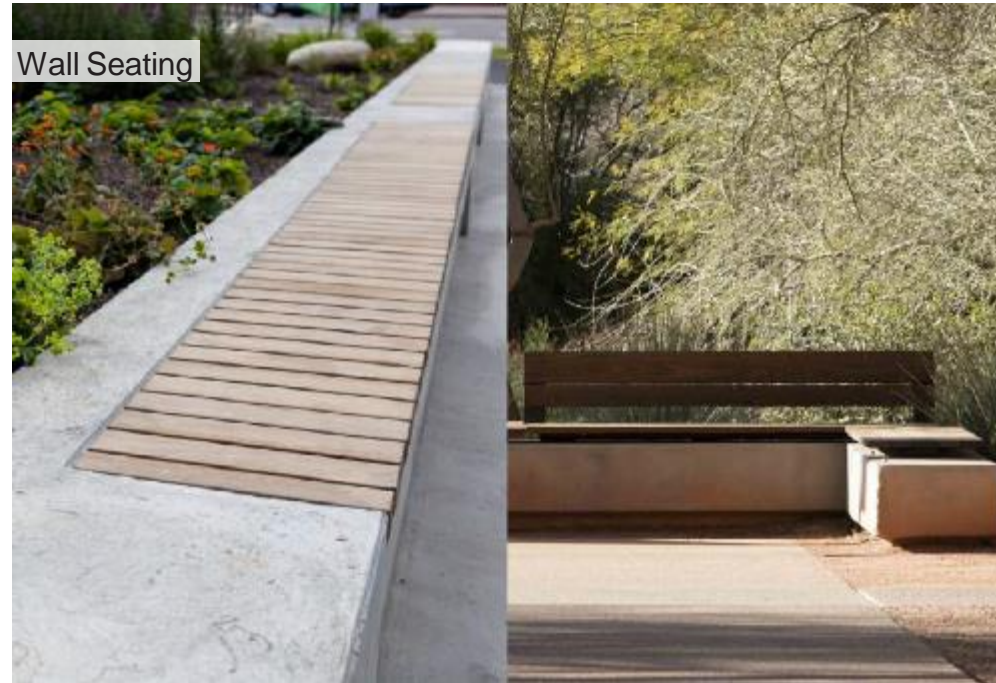
## SUMMARY

### LOCAL STONE

- Alternatives: Granite, Jasper, Virginia Slate
- Material Characteristics:
  - Finish: As-is material with natural cleft or broken faces
  - Texture: Rough and non-slip — appropriate for use in/around water play environments
  - Sizes: Available in a range of sizes; large quarried blocks also possible
  - Availability: Inventory on-hand – no shop fabrication required
  - Ideal for fast-track construction timelines
- Pricing
  - \$40–\$60 per cubic foot, including shipping
  - Final pricing dependent on size, quantity, and delivery specifics
- Design Intent & Use
  - Integrate natural boulders as sculptural and functional site features:
  - Seating
  - Edge containment
  - Climbable elements (pending safety review)
  - Integration with splash pad grading & water features
  - Avoids fabrication delays; aligns with fast-tracked construction schedule

# FURNISHINGS - SEATING

## BENCHES + ADIRONDACKS



## TABLES + CHAIRS / DINING



# FURNISHINGS - SITE ELEMENTS

## RECEPTACLES



## PLANTERS



## BIKE ACCOMMODATIONS



# UMBRELLAS + PAVILIONS

## UMBRELLAS



## PAVILIONS



# LIGHTING

## POSTS



## BOLLARDS / PATHWAY



## CATENARY LIGHTS



## BENCH / WALL

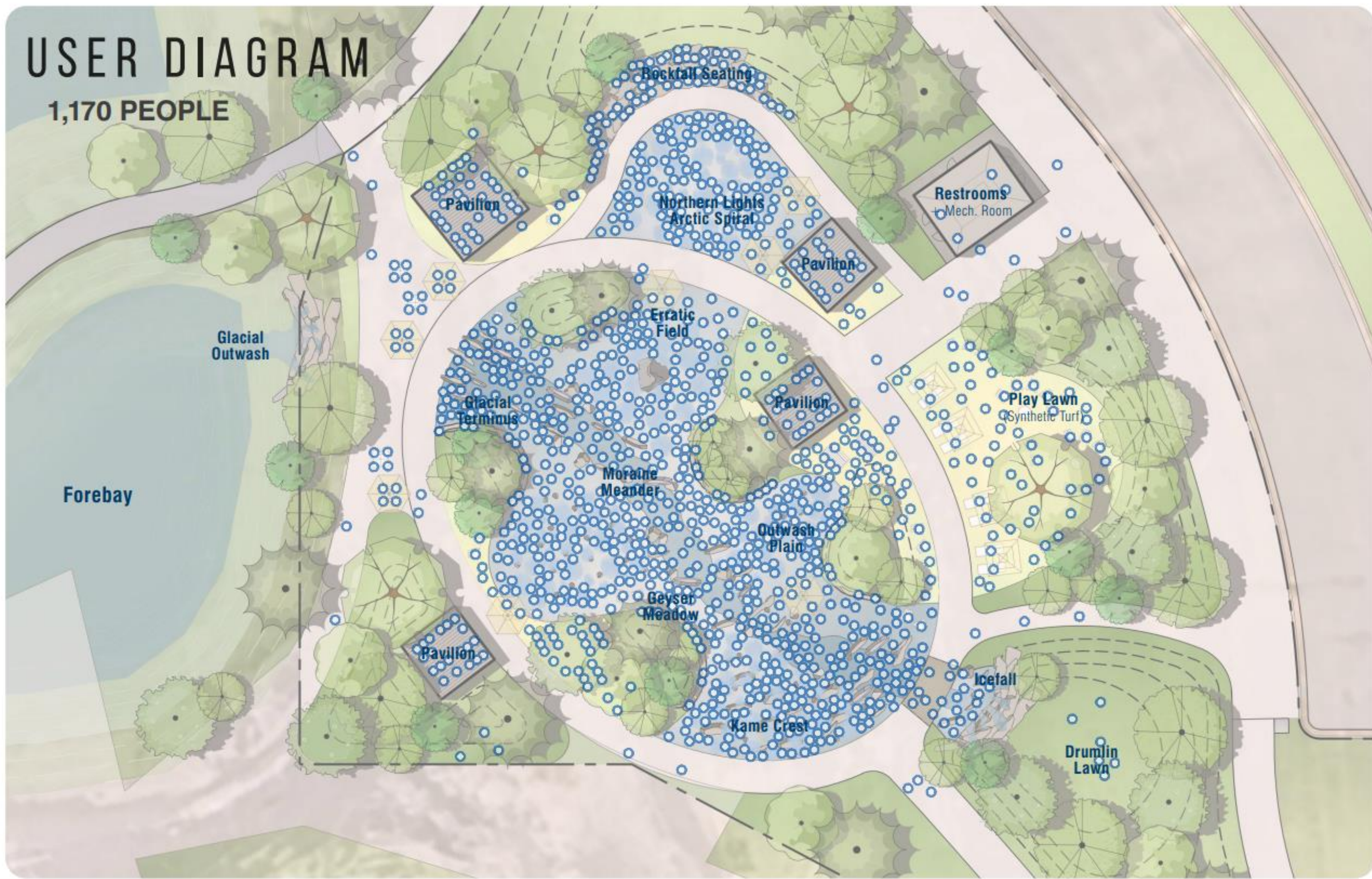


# PUBLIC ART



# USER DIAGRAM

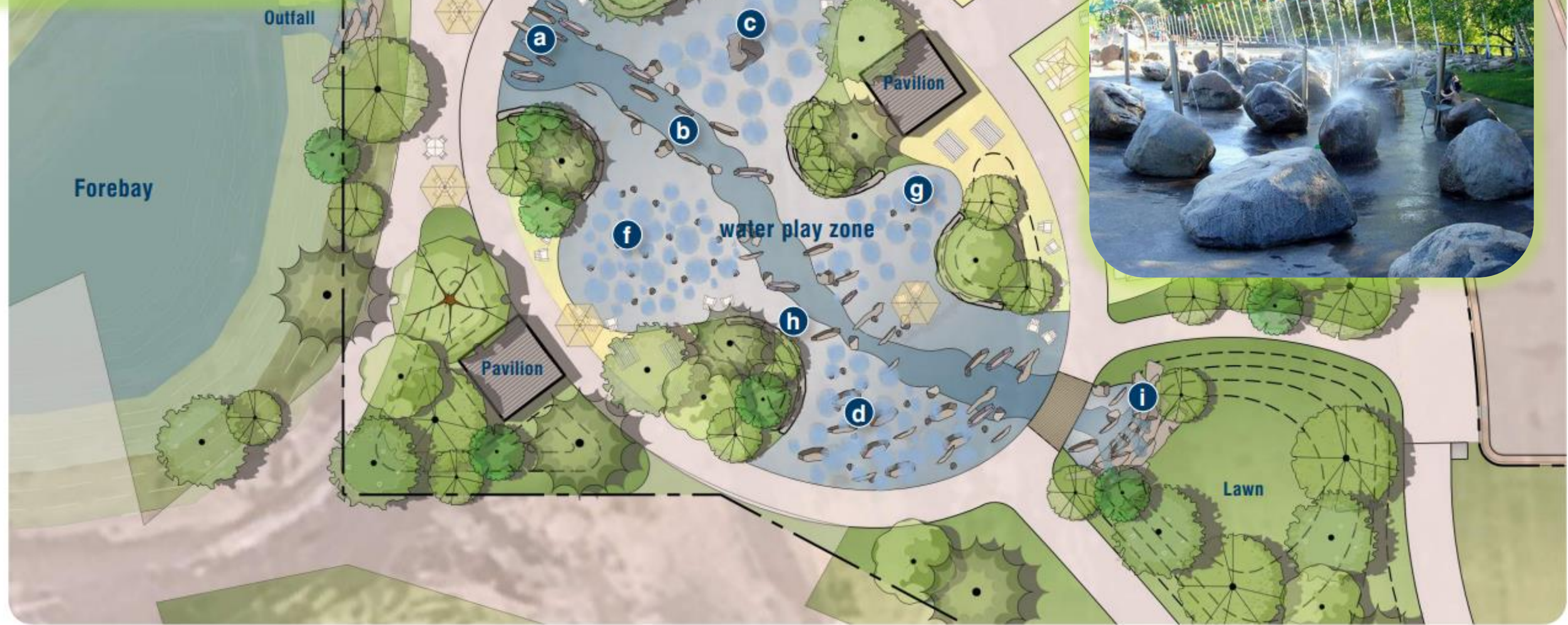
1,170 PEOPLE



# ENLARGEMENT



# CATENARY LIGHTS



# CATENARY LIGHTS



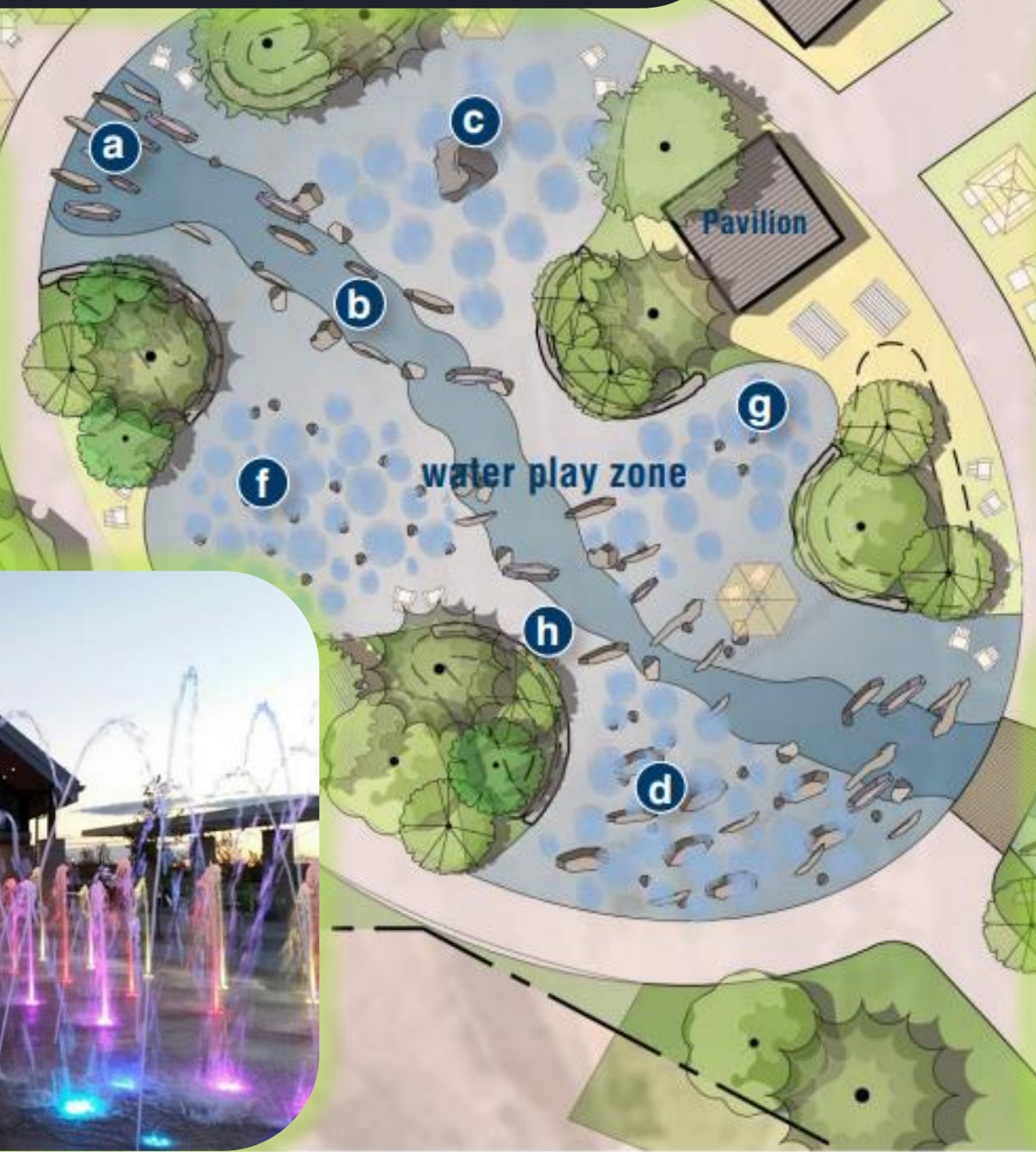
CATENARY LIGHTS



# CATENARY LIGHTS



# CATENARY LIGHTS

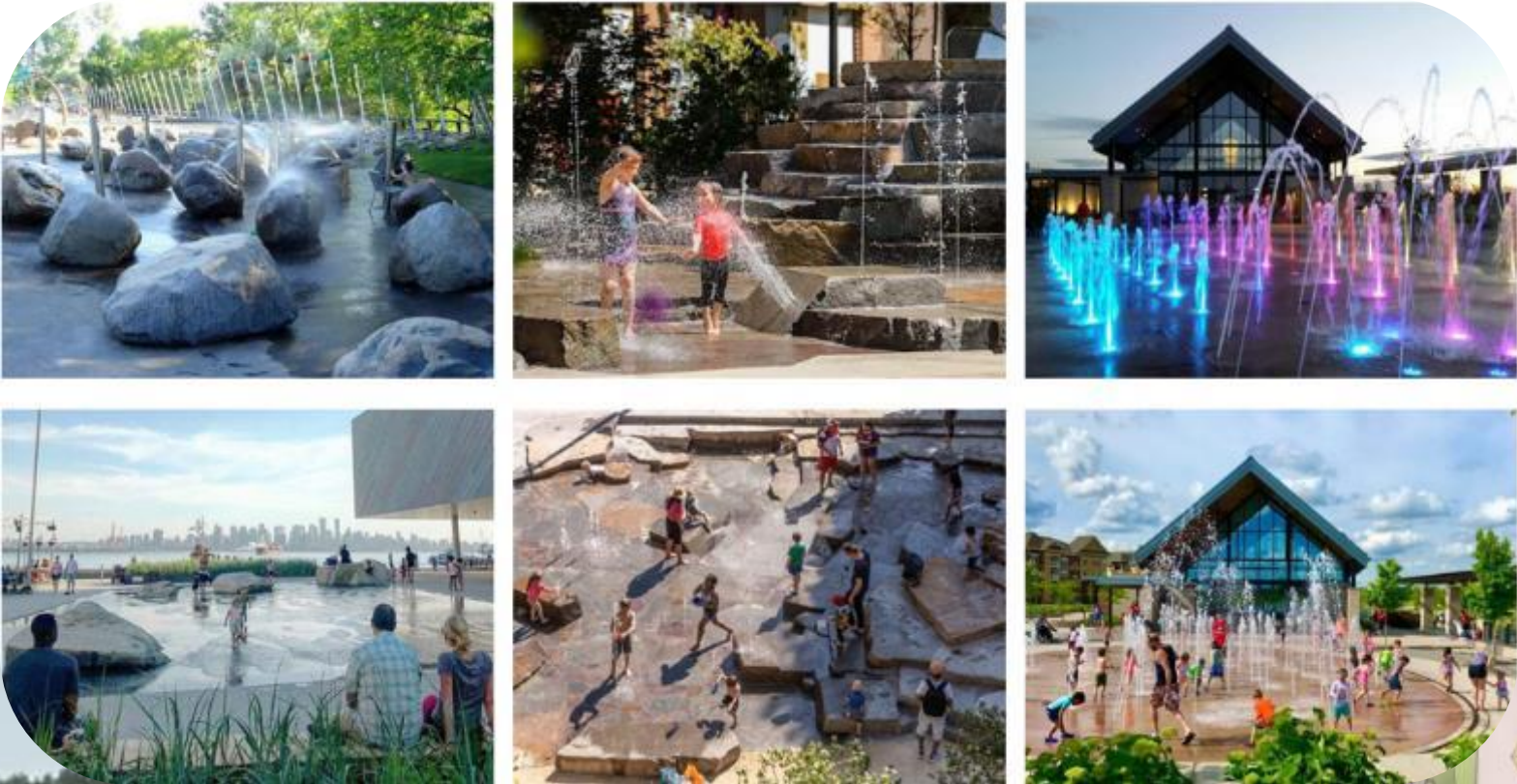


# THE WATERFRONT



RAMSEY, MN  
JULY 10, 2025

DF/ DAMON FARBER



PUBLIC WORKS COMMITTEE UPDATE –  
A PROGRESS REPORT