



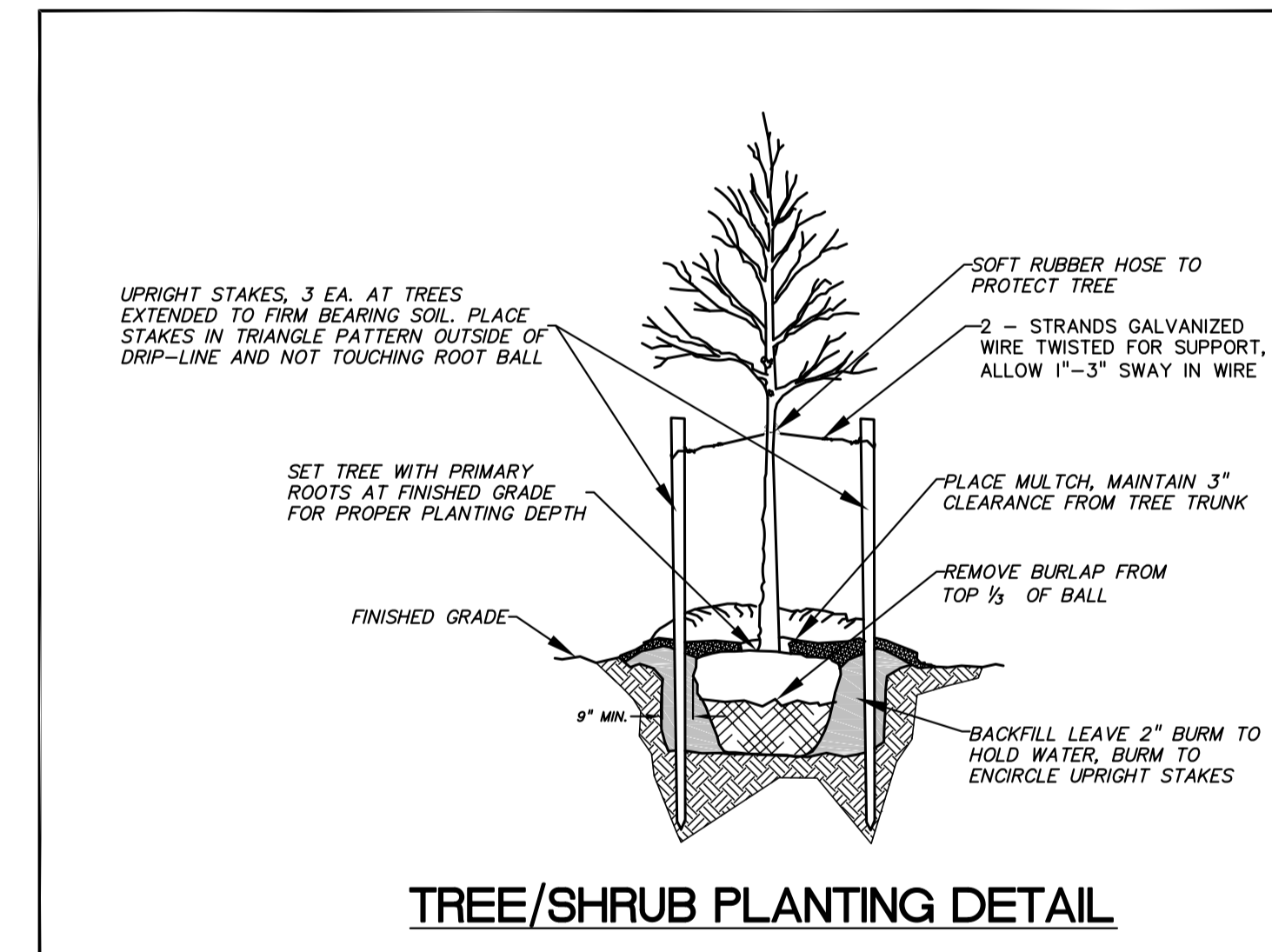


LEGEND:

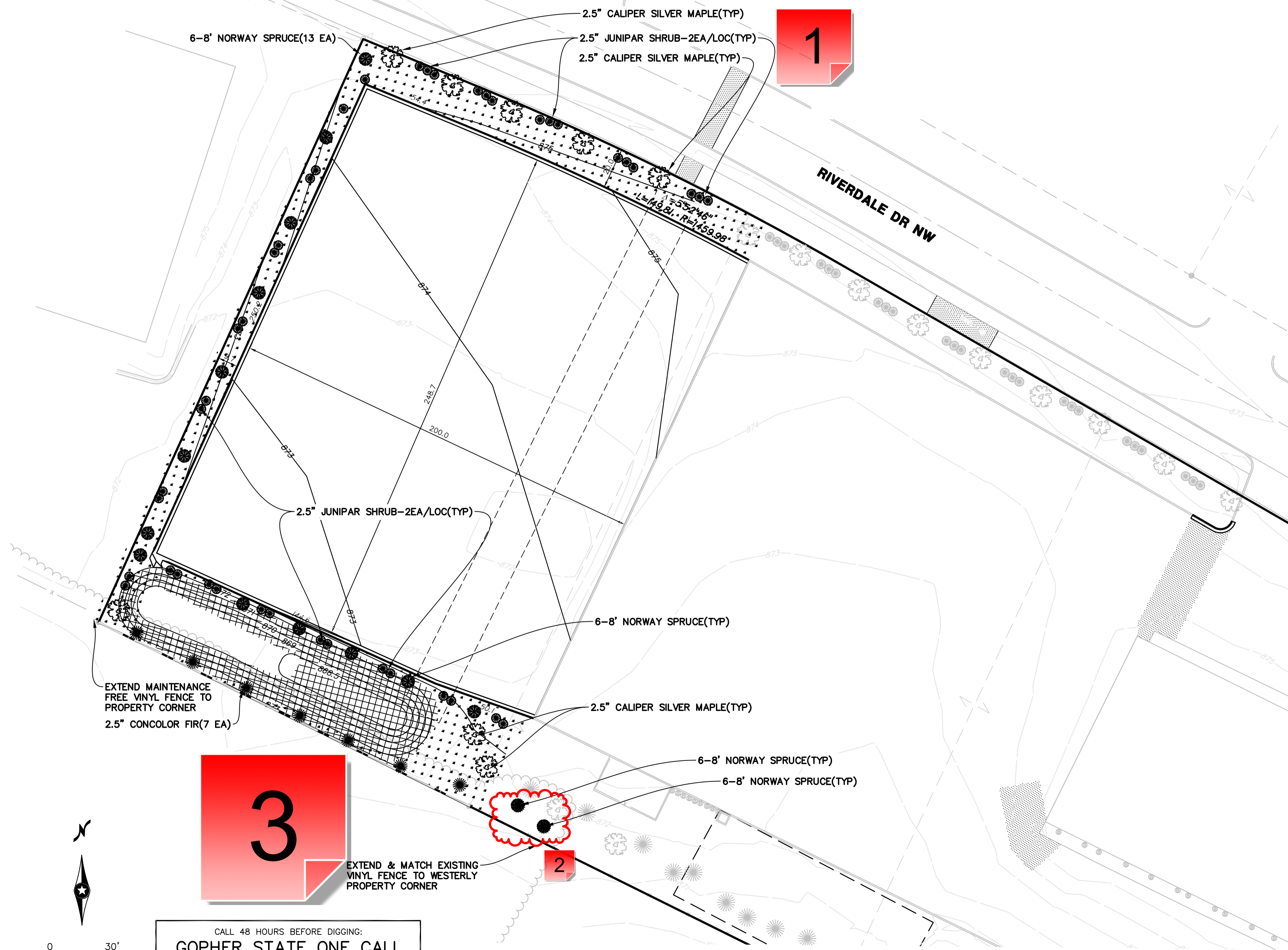
-  PROPOSED SOD TURF ESTABLISHMENT
-  PROPOSED EROSION CONTROL BLANKET IN POND (PER DETAIL)
-  PROPOSED 2 1/2" CALIPER SILVER MAPLE
-  PROPOSED 6-8' NORWAY SPRUCE PINE TREE
-  PROPOSED 6-8' CONCOLOR FIR PINE TREE
-  PROPOSED JUNIPER ANDORRA SHRUB
-  EXISTING DECIDUOUS TREE
-  EXISTING PINE TREE
-  EXISTING SHRUBS


TREES/SHRUBS PLANTING SCHEDULE:

QTY	SIZE/HT	TYPE/SPECIES
7 EA	6-8 FT	CONCOLOR FIR (ABIES CONCOLOR)
13 EA	6-8 FT	NORWAY SPRUCE (PINEA ABIES)
8 EA	2-1/2"	CALIPER SILVER MAPLE (ACER SACCHARINUM 'LACINIATUM')
35 EA	24"	COMPACT ANDORRA JUNIPER (JUNIPERUS HORIZONTALIS 'PLUMOSA COMPACTA')

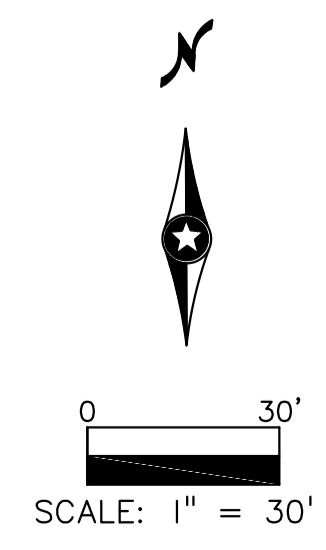


NOTE
 1. SHRUB SIZE AT INSTALLATION MUST BE AT LEAST 24 INCHES IN HEIGHT OR WIDTH, DEPENDING ON GROWTH CHARACTERISTICS OF THE SPECIES.



	DESCRIPTION	DATE	REV. NO.	DATE: 02/11/2025	DESIGN BY: CJD,TJO	DRAWN BY: CJD,TJO	CHECKED BY: NAA	DWG FILE: 4-Landscape	FILE NO.: 18-0269.01
<p>I hereby certify that this plan, specification, or report was prepared by me or under my direct supervision and that I am a duly Licensed Professional Engineer under the laws of the State of Minnesota.</p> <p>Signed:  Christopher J. Dahm Lic. No. 56628 Date: 02/11/2025</p>									
<p>BOGART, PEDERSON & ASSOCIATES, INC.</p> <p>LAND SURVEYING & ENGINEERING MAPPING</p> <p>13076 FIRST STREET, BECKER, MN 55308-9322 TEL: 763-262-8822 FAX: 763-262-8844</p>									
<p>Pleasureland RV Site Improvements 7900 Riverdale Dr NW City of Ramsey, Anoka County, MN</p> <p style="text-align: right;">Landscape Plan</p>									
SHEET NO.									
C6.0									

CALL 48 HOURS BEFORE DIGGING:
GOPHER STATE ONE CALL
 TWIN CITY AREA 651-454-0002
 MINNESOTA TOLL FREE 1-800-252-1166



1 - Juniper Andorra Size

Created by: Chris Anderson
On: 02/20/2025 08:49 AM

Update the size of the juniper shrubs. The labels show it as 2.5" but it should be 24" (the size is correct in the planting schedule).

----- 0 Replies -----

2 - Species?

Created by: Chris Anderson
On: 02/20/2025 08:55 AM

This species symbol isn't in the plant schedule. Plant schedule calls for 13 Norway Spruce, which there are, excluding these 2 trees. Add this symbol to the plant schedule or change it to the symbol for Norway Spruce.

----- 0 Replies -----

3 - Shrub Species

Created by: Chris Anderson
On: 02/20/2025 09:21 AM

It is recommended that an alternative shrub species be used around the pond. This is a 'bufferyard', which is required by City Code (due to residential to the south), and the Andorra Juniper only gets to maybe about 2 feet in height. A taller growing shrub would do more in terms of screening or buffering between the different uses.

----- 0 Replies -----