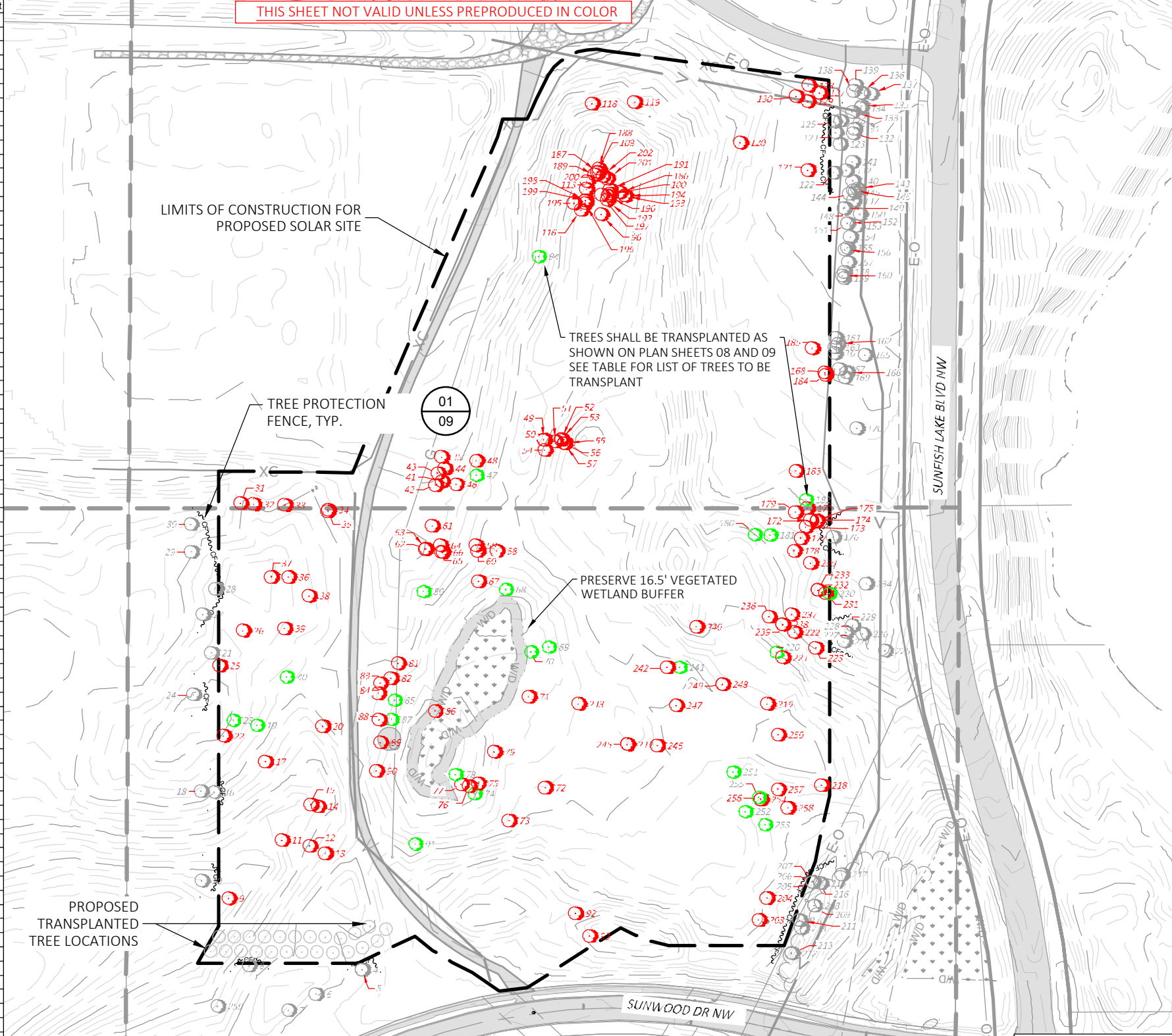


RD	DBH	SPECIES	Preserve	Remove	Transplant
4	5	EASTERN RED CEDAR	Yes		
5	5	EASTERN RED CEDAR	Yes		
6	11	EASTERN RED CEDAR	Yes		
7	17	BLACK CHERRY	Yes		
8	9	EASTERN RED CEDAR	Yes		
9	7	NORTHERN PIN OAK		Remove	
10	10	EASTERN RED CEDAR	Yes		
11	9	EASTERN RED CEDAR		Remove	
12	13	EASTERN RED CEDAR		Remove	
13	5	EASTERN RED CEDAR		Remove	
14	5	EASTERN RED CEDAR		Remove	
15	10	EASTERN RED CEDAR		Remove	
16	5	EASTERN RED CEDAR	Yes		
17	5	EASTERN RED CEDAR		Remove	
18	5	EASTERN RED CEDAR	Yes		
19	4	EASTERN RED CEDAR	Yes		Transplant
20	9	EASTERN RED CEDAR		Remove	
21	5	EASTERN RED CEDAR	Yes		
22	5	EASTERN RED CEDAR		Remove	
23	4	EASTERN RED CEDAR	Yes		Transplant
24	4	EASTERN RED CEDAR	Yes		
25	5	EASTERN RED CEDAR		Remove	
26	8	EASTERN RED CEDAR		Remove	
27	29	BUR OAK	Yes		
28	24	BUR OAK (DEAD)		Exempt	
29	28	BUR OAK	Yes		
30	32	BUR OAK	Yes		
31	15	RED PINE		Remove	
32	16	RED PINE		Remove	
33	35	BUR OAK		Remove	
34	4.5	EASTERN RED CEDAR		Remove	
35	7	EASTERN RED CEDAR		Remove	
36	7	EASTERN RED CEDAR		Remove	
37	5	EASTERN RED CEDAR		Remove	
38	5	EASTERN RED CEDAR		Remove	
39	4.5	EASTERN RED CEDAR		Remove	
40	4	EASTERN RED CEDAR	Yes		Transplant
41	16	BUR OAK		Remove	
42	23	BUR OAK		Remove	
43	24	BUR OAK		Remove	
44	21	BUR OAK		Remove	
45	5	BUR OAK		Remove	
46	5.5	EASTERN RED CEDAR		Remove	
47	4	EASTERN RED CEDAR	Yes		Transplant
48	7	EASTERN RED CEDAR		Remove	
49	4.5	EASTERN RED CEDAR		Remove	
50	4.5	EASTERN RED CEDAR		Remove	
51	12	BUR OAK		Remove	
52	6.5	BUR OAK		Remove	
53	10	BUR OAK		Remove	
54	34	BUR OAK		Remove	
55	13	BUR OAK		Remove	
56	19	BUR OAK		Remove	
57	5	EASTERN RED CEDAR		Remove	
58	25	COTT ONWOOD		Remove	
59	28	COTT ONWOOD		Remove	
60	9	COTT ONWOOD		Remove	
61	6	EASTERN RED CEDAR		Remove	
62	10	COTT ONWOOD		Remove	
63	10	COTT ONWOOD		Remove	
64	9	COTT ONWOOD		Remove	
65	9	COTT ONWOOD		Remove	
66	12	COTT ONWOOD		Remove	
67	5	EASTERN RED CEDAR		Remove	
68	4	EASTERN RED CEDAR	Yes		Transplant
69	4	EASTERN RED CEDAR	Yes		Transplant
70	4	EASTERN RED CEDAR	Yes		Transplant
71	6	EASTERN RED CEDAR		Remove	
72	12	EASTERN RED CEDAR		Remove	
73	11	EASTERN RED CEDAR		Remove	
74	4	EASTERN RED CEDAR	Yes		Transplant
75	4.5	EASTERN RED CEDAR		Remove	
76	4.5	EASTERN RED CEDAR		Remove	
77	4.5	EASTERN RED CEDAR		Remove	
78	4	EASTERN RED CEDAR	Yes		Transplant
79	5	EASTERN RED CEDAR		Remove	
80	4	EASTERN RED CEDAR	Yes		Transplant

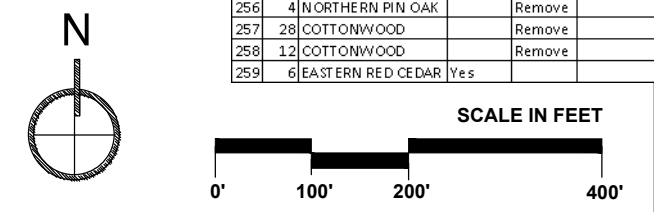
RD	DBH	SPECIES	Preserve	Remove	Transplant
81	5	EASTERN RED CEDAR		Remove	
82	5	EASTERN RED CEDAR		Remove	
83	4	EASTERN RED CEDAR		Remove	
84	6	EASTERN RED CEDAR		Remove	
85	4.5	EASTERN RED CEDAR	Yes		Transplant
86	4.5	EASTERN RED CEDAR		Remove	
87	4	EASTERN RED CEDAR	Yes		Transplant
88	4.5	EASTERN RED CEDAR		Remove	
89	NA	CREEPING JUNIPER	Yes		
90	5	EASTERN RED CEDAR		Remove	
91	4	EASTERN RED CEDAR	Yes		Transplant
92	9	EASTERN RED CEDAR		Remove	
93	5	EASTERN RED CEDAR		Remove	
94	4	EASTERN RED CEDAR	Yes		Transplant
96	10	COTT ONWOOD		Remove	
100	16	COTT ONWOOD		Remove	
103	9	COTT ONWOOD		Remove	
113	18	COTT ONWOOD		Remove	
116	11	COTT ONWOOD		Remove	
118	5	EASTERN RED CEDAR		Remove	
119	6	EASTERN RED CEDAR		Remove	
120	12	EASTERN RED CEDAR		Remove	
121	4.5	EASTERN RED CEDAR		Remove	
122	5	EASTERN RED CEDAR	Yes		
123	5	EASTERN RED CEDAR	Yes		
124	4.5	EASTERN RED CEDAR	Yes		
125	5.5	EASTERN RED CEDAR	Yes		
126	4	EASTERN RED CEDAR	Yes		
127	5.5	RED PINE		Remove	
128	6.5	EASTERN RED CEDAR		Remove	
129	5	EASTERN RED CEDAR		Remove	
130	5.5	EASTERN RED CEDAR		Remove	
131	7.5	BLACK SPRUCE	Yes		
132	7.5	BLUE SPRUCE	Yes		
133	17	EASTERN RED CEDAR	Yes		
134	12	EASTERN RED CEDAR	Yes		
135	8	EASTERN RED CEDAR	Yes		
136	10	EASTERN RED CEDAR	Yes		
137	12	EASTERN RED CEDAR	Yes		
138	8	EASTERN RED CEDAR	Yes		
139	8	EASTERN RED CEDAR	Yes		
140	20	EASTERN RED CEDAR	Yes		
141	4	EASTERN RED CEDAR	Yes		
142	9	EASTERN RED CEDAR	Yes		
143	12	EASTERN RED CEDAR	Yes		
144	7.5	EASTERN RED CEDAR	Yes		
145	12	EASTERN RED CEDAR	Yes		
146	6.5	EASTERN RED CEDAR	Yes		
147	13	EASTERN RED CEDAR	Yes		
148	6	EASTERN RED CEDAR	Yes		
149	7	EASTERN RED CEDAR	Yes		
150	8.5	EASTERN RED CEDAR	Yes		
151	4	EASTERN RED CEDAR	Yes		
152	7	EASTERN RED CEDAR	Yes		
153	5.5	EASTERN RED CEDAR	Yes		
154	7	EASTERN RED CEDAR	Yes		
155	9	EASTERN RED CEDAR	Yes		
156	6	EASTERN RED CEDAR	Yes		
157	8	EASTERN RED CEDAR	Yes		
158	8	EASTERN RED CEDAR	Yes		
159	9	EASTERN RED CEDAR	Yes		
160	14	EASTERN RED CEDAR	Yes		
161	4	EASTERN RED CEDAR	Yes		
162	4	EASTERN RED CEDAR	Yes		
163	4.5	EASTERN RED CEDAR	Yes		
164	15	EASTERN RED CEDAR	Yes		
165	4	EASTERN RED CEDAR	Yes		
166	4	EASTERN RED CEDAR	Yes		
167	4.5	EASTERN RED CEDAR	Yes		
168	5	EASTERN RED CEDAR		Remove	
169	4	EASTERN RED CEDAR	Yes		
170	4	EASTERN RED CEDAR	Yes		
171	37	BUR OAK		Remove	
172	28	BUR OAK		Remove	
173	21	BUR OAK		Remove	
174	4	BUR OAK		Remove	
175	5.5	BUR OAK		Remove	
176	5	EASTERN RED CEDAR	Yes		
177	4.5	EASTERN RED CEDAR		Remove	
178	5	EASTERN RED CEDAR		Remove	
179	4.5	EASTERN RED CEDAR		Remove	
180	4	EASTERN RED CEDAR	Yes		Transplant
181	4	EASTERN RED CEDAR	Yes		Transplant
182	4	EASTERN RED CEDAR	Yes		Transplant



RD	DBH	SPECIES	Preserve	Remove	Transplant
183	5	EASTERN RED CEDAR		Remove	
184	5.5	EASTERN RED CEDAR		Remove	
185	4.5	EASTERN RED CEDAR		Remove	
186	9	COTT ONWOOD		Remove	
187	11	COTT ONWOOD		Remove	
188	12	COTT ONWOOD		Remove	
189	13	COTT ONWOOD		Remove	
190	11	COTT ONWOOD		Remove	
191	9	COTT ONWOOD		Remove	
192	12	COTT ONWOOD		Remove	
193	10	COTT ONWOOD		Remove	
194	12	COTT ONWOOD		Remove	
195	8	COTT ONWOOD		Remove	
196	10	COTT ONWOOD		Remove	
197	20	COTT ONWOOD		Remove	
198	16	COTT ONWOOD		Remove	
199	13	COTT ONWOOD		Remove	
200	12	COTT ONWOOD		Remove	
201	27	COTT ONWOOD		Remove	
202	12	COTT ONWOOD		Remove	
203	18	COTT ONWOOD		Remove	
204	13	COTT ONWOOD		Remove	
205	4.5	EASTERN RED CEDAR	Yes		
206	4.5	EASTERN RED CEDAR	Yes		
207	4	EASTERN RED CEDAR	Yes		
208	6	EASTERN RED CEDAR	Yes		
209	5	EASTERN RED CEDAR	Yes		
210	5.5	EASTERN RED CEDAR	Yes		
211	4	EASTERN RED CEDAR	Yes		
212	5.5	EASTERN RED CEDAR	Yes		
213	25	BUR OAK	Yes		
214	22	BUR OAK	Yes		
215	10	NORTHERN PIN OAK	Yes		
216	9	NORTHERN PIN OAK	Yes		
217	18	NORTHERN PIN OAK	Yes		
218	5	EASTERN RED CEDAR		Remove	
219	4.5	EASTERN RED CEDAR		Remove	
220	4	EASTERN RED CEDAR	Yes		Transplant
221	4.5	EASTERN RED CEDAR		Remove	
222	6.5	EASTERN RED CEDAR		Remove	
223	4.5	EASTERN RED CEDAR		Remove	
224	6	EASTERN RED CEDAR	Yes		
225	4.5	EASTERN RED CEDAR	Yes		
226	4	EASTERN RED CEDAR	Yes		
227	4	EASTERN RED CEDAR	Yes		
228	4	EASTERN RED CEDAR	Yes		
229	4.5	EASTERN RED CEDAR	Yes		
230	4	EASTERN RED CEDAR	Yes		Transplant
231	5.5	EASTERN RED CEDAR		Remove	
232	5	EASTERN RED CEDAR		Remove	
233	5.5	EASTERN RED CEDAR		Remove	
234	4.5	EASTERN RED CEDAR	Yes		
235	4.5	EASTERN RED CEDAR		Remove	
236	4.5	EASTERN RED CEDAR		Remove	
237	6	EASTERN RED CEDAR		Remove	
238	6.5	EASTERN RED CEDAR		Remove	
239	4.5	EASTERN RED CEDAR		Remove	
240	5	EASTERN RED CEDAR		Remove	
241	4	EASTERN RED CEDAR	Yes		Transplant
242	4.5	EASTERN RED CEDAR		Remove	
243	7	EASTERN RED CEDAR		Remove	
244	40	COTT ONWOOD		Remove	
245	12	COTT ONWOOD		Remove	
246	28	COTT ONWOOD		Remove	
247	4.5	EASTERN RED CEDAR		Remove	
248	6	EASTERN RED CEDAR		Remove	
249	4	EASTERN RED CEDAR		Remove	
250	36	COTT ONWOOD		Remove	
251	4	EASTERN RED CEDAR	Yes		Transplant
252	4	EASTERN RED CEDAR	Yes		Transplant
253	4	EASTERN RED CEDAR	Yes		Transplant
254	7	EASTERN RED CEDAR		Remove	
255	4	EASTERN RED CEDAR	Yes		Transplant
256	4	NORTHERN PIN OAK		Remove	
257	28	COTT ONWOOD		Remove	
258	12	COTT ONWOOD		Remove	
259	6	EASTERN RED CEDAR	Yes		

- NOTES:
- ALL SPECIES OF OAK WITH A DBH OF 4" OR GREATER; ALL CONIFEROUS SPECIES WITH A DBH OF 4" OR GREATER; AND ALL OTHER TREES WITH A DBH OF 8" OR GREATER WERE SURVEYED WITHIN 30' OF PROPOSED CONSTRUCTION LIMITS. TREES BEYOND THAT EXTENT WITHIN THE PROPERTY WERE NOT SURVEYED.
 - #89 CREEPING JUNIPER IDENTIFIED ON SITE IS NOT INCLUDED IN CALCULATIONS BUT WILL BE PRESERVED AND PROTECTED THROUGHOUT CONSTRUCTION.
 - #28 BUR OAK IS DEAD AND WAS NOT INCLUDED IN THE CALCULATIONS.

Total Significant Trees on Site =	2160.5
Total Inches Removed =	1465.5
Removed Significant Tree Inches / Total Significant Tree Inches =	67.83%



EMMONS & OLIVIER RESOURCES, INC.
1919 JUV. AVL. W. #300 S1. PAUL, MN
ILL: 651.770.8449 WWW.LOHINC.COM

I HEREBY CERTIFY THAT THIS PLAN, SPECIFICATION, OR REPORT WAS PREPARED BY ME OR UNDER MY DIRECT SUPERVISION AND THAT I AM A DULY LICENSED PROFESSIONAL ENGINEER UNDER THE LAWS OF THE STATE OF MINNESOTA.

KYLE D. CRAWFORD DATE: 02/18/2025 LICENSE #54906

DATE	NO.	DESCRIPTION
02/18/2025	1	IFPR - ISSUED FOR PERMIT REVIEW
	2	
	3	
	4	
	5	
	6	

DESIGNED BY: ERK
DRAWN BY: BMP
CHECKED BY: KDC
EOR JOB #1518-0020



LANDFILL SOLAR
RAMSEY, ANOKA COUNTY, MINNESOTA
CEDAR CREEK ENERGY RAMSEY, MINNESOTA, 55303

TREE PRESERVATION PLAN
SHEET 05 OF 11