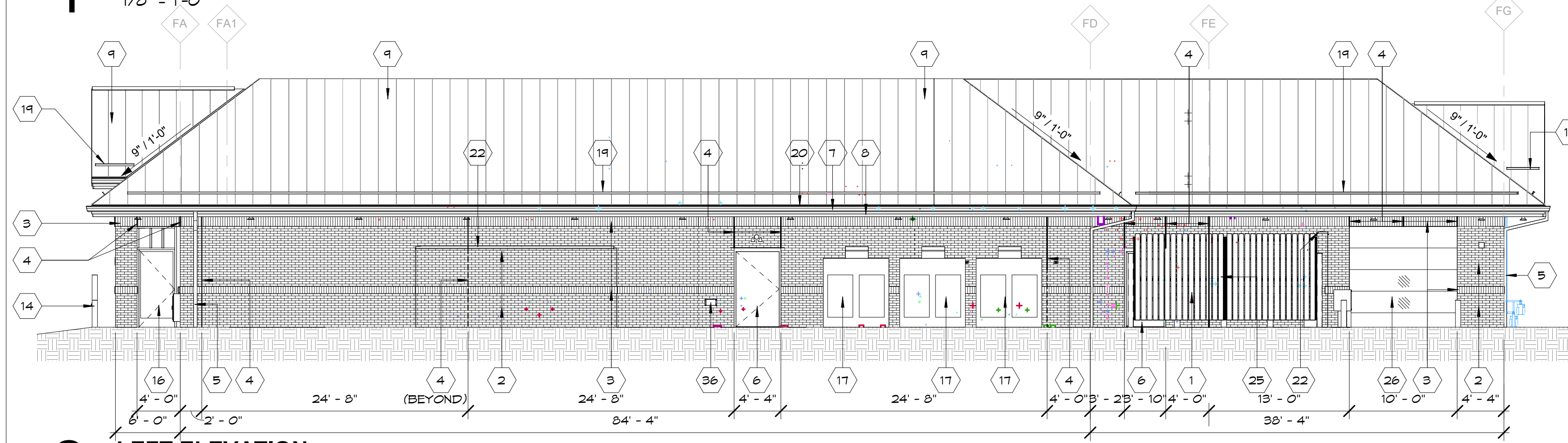
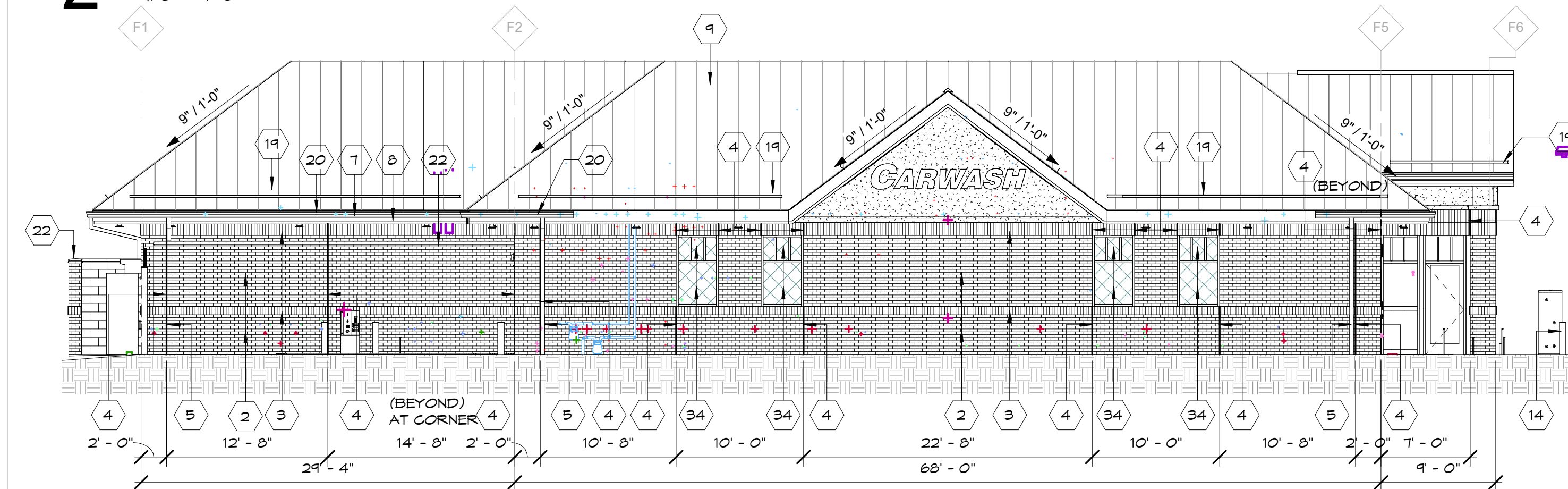


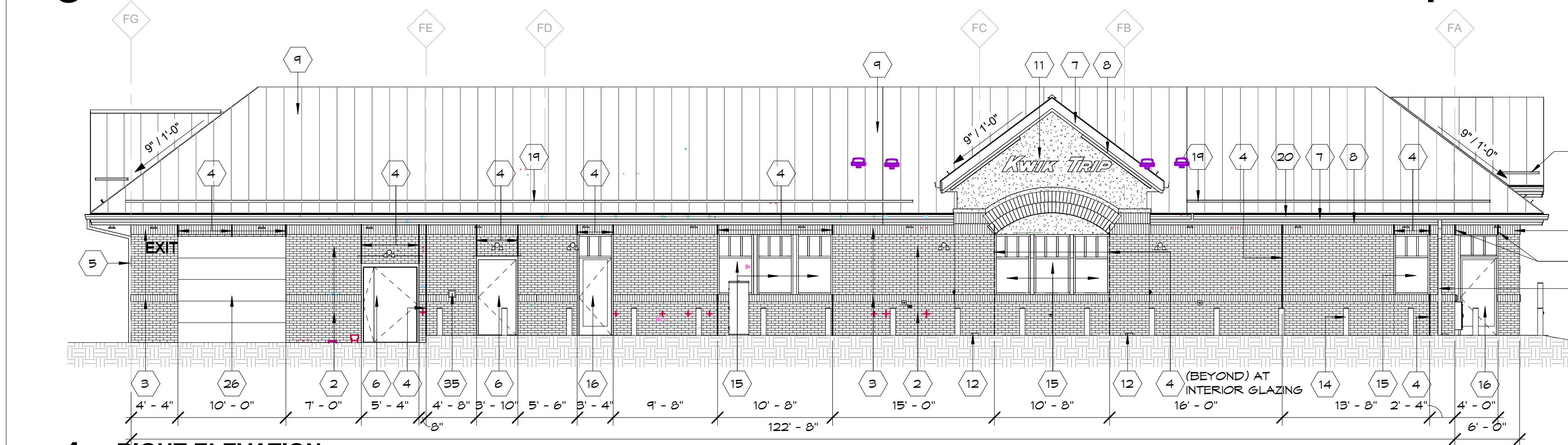
1 FRONT ELEVATION
1/8" = 1'-0"



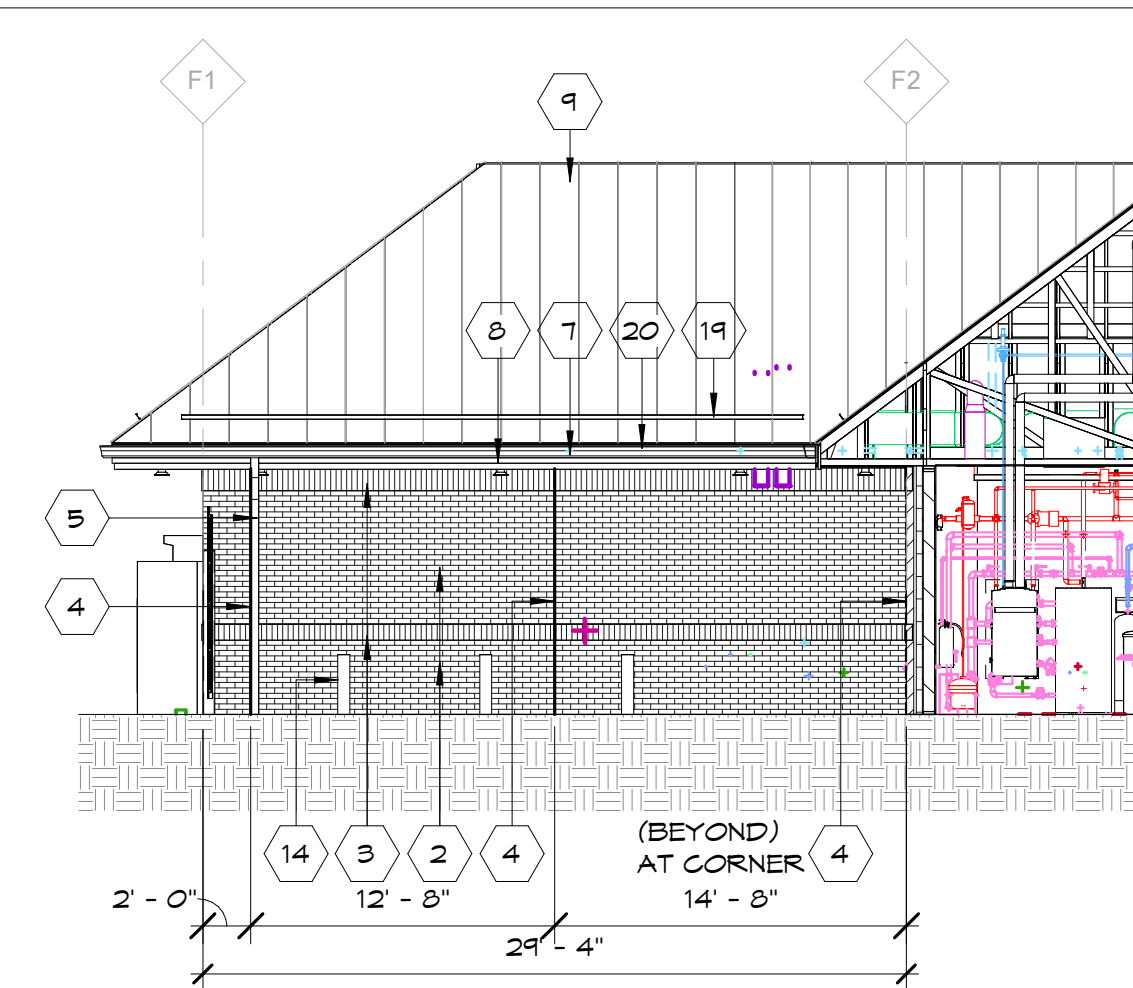
2 LEFT ELEVATION
1/8" = 1'-0"



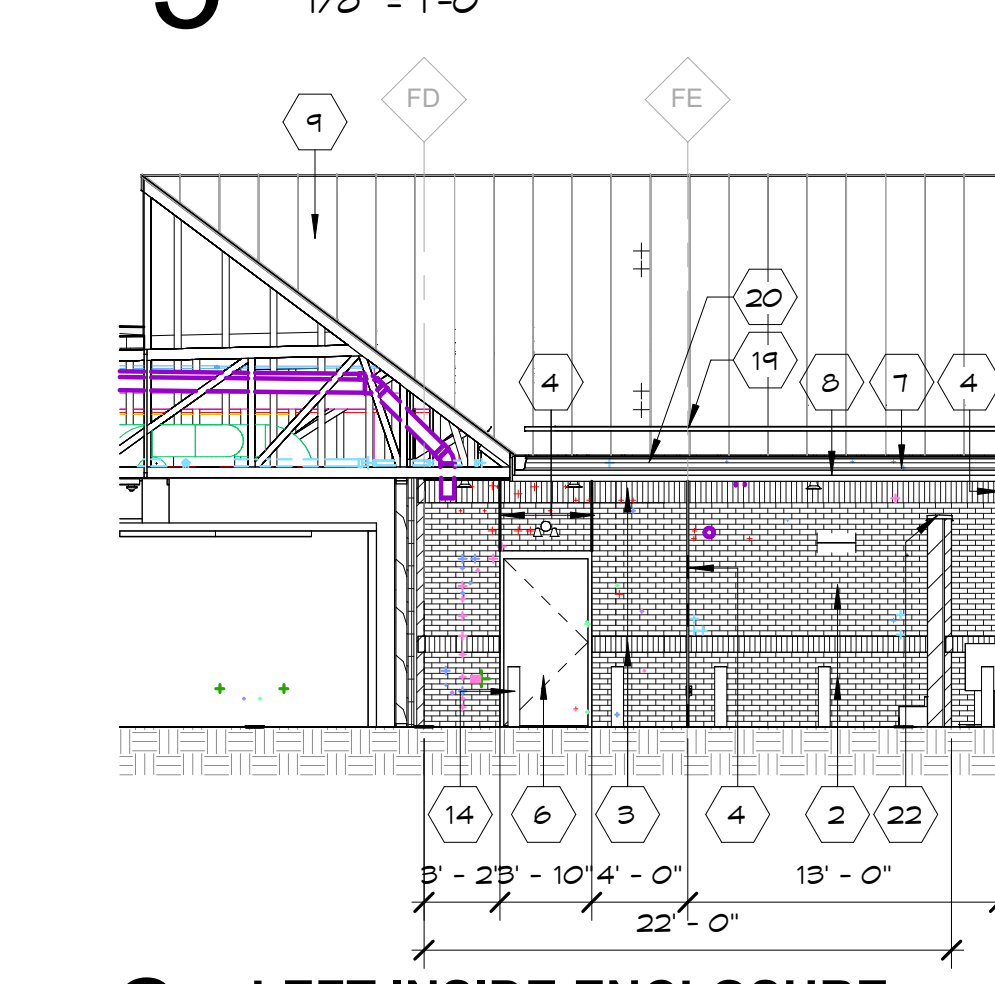
3 REAR ELEVATION
1/8" = 1'-0"



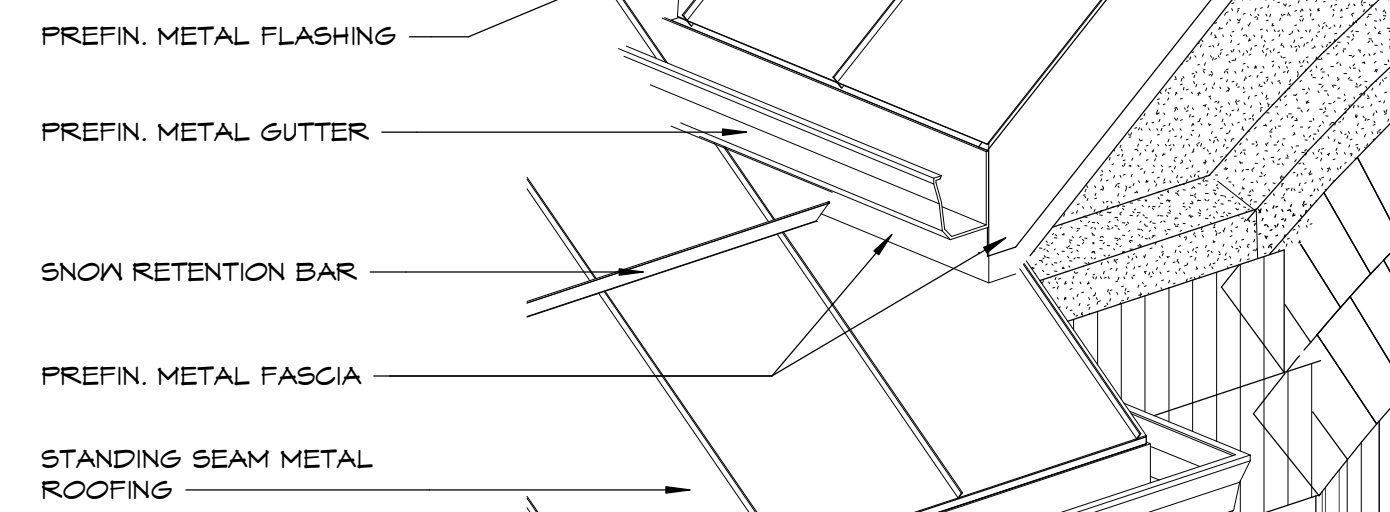
4 RIGHT ELEVATION
1/8" = 1'-0"



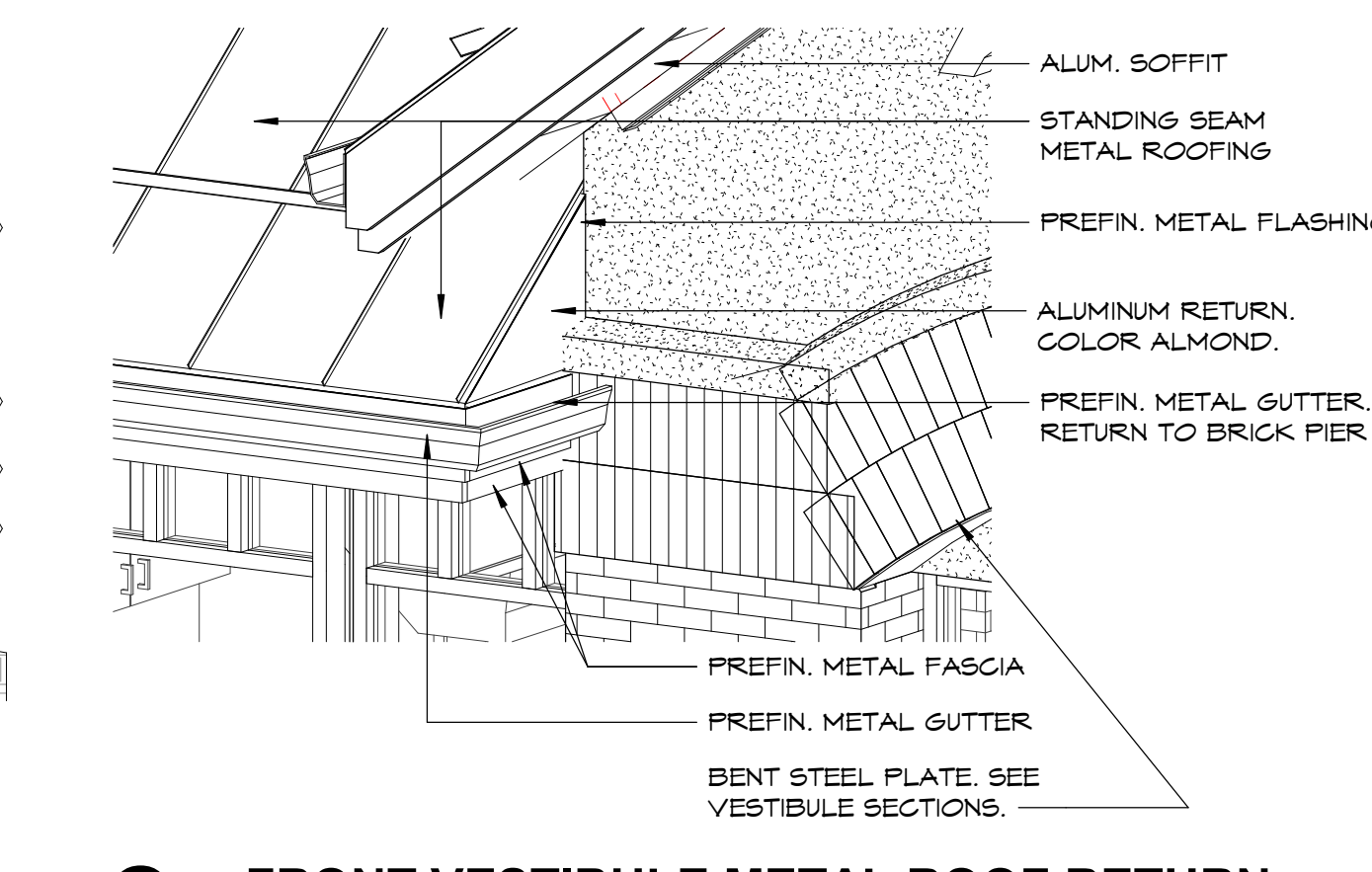
5 REAR INSIDE ENCLOSURE
1/8" = 1'-0"



6 LEFT INSIDE ENCLOSURE
1/8" = 1'-0"



7 VESTIBULE EAVE TO ROOF FLASHING DETAIL



8 FRONT VESTIBULE METAL ROOF RETURN

EXTERIOR ELEVATION KEYNOTES

MARK	DESCRIPTION
1	TRASH ENCLOSURE.
2	MODULAR BRICK VENEER (RED).
3	BRICK SOLDIER COURSE (TAN). SEE SECTION FOR SIZE
4	BRICK CONTROL JOINT. SEALANT COLOR TO MATCH BRICK COLOR.
5	ALUMINUM DOWNSPOUT.
6	HOLLOW METAL DOOR & FRAME. PAINT. CAULK COLOR TO MATCH BRICK.
7	ALUMINUM FASCIA - ALMOND.
8	ALUMINUM FASCIA - RED.
9	PREFINISHED STANDING SEAM METAL ROOFING.
10	CT CABINET AND ELECTRICAL METER. RE: ELECT. PLANS.
11	EIFS. COLOR: TAN.
12	CAST ALUMINUM BRICK VENT - ACCEPTABLE OPTIONS: HOHMANN & BARNARD #C825, 8" X 2 1/4" OR EX 825.
13	EMERGENCY FUEL SHUT OFF. RECESS FLUSH W/ WALL.
14	6" BOLLARD W/ 40" PLASTIC SLEEVE. SEE SHEET A124.
15	ALUMINUM STOREFRONT FRAMING W/ INSULATED GLAZING. CAULK COLOR GRAY DYMONIC.
16	ALUMINUM STOREFRONT ENTRANCE. CAULK COLOR GRAY DYMONIC.
17	ICE MERCHANTISER
18	LP CAGE
19	SNOW RETENTION BAR
20	PREFINISHED METAL GUTTER
21	BLUE HDGP. BOLLARD. REFER TO SITE PLANS.
22	PREFINISHED METAL WALL CAP.
23	KNOX BOX LOCATION WHEN NEEDED. OWNER PROVIDED.
24	SPLASH BLOCK
25	PROVIDE LOCK BOLT FOR EACH LEAF
26	INSULATED POLYCARBONATE DOOR
27	12 X 12 GLASS BLOCK
28	6 X 6 GLASS BLOCK
29	SUPPLY FAN. SEE HVAC PLANS.
30	FIRE EXTINGUISHER CABINET
31	HANDICAP PUSH PLATE. SEE ELECTRICAL SHEETS FOR MOUNTING HEIGHTS.
32	STREET ADDRESS NUMBERS TO BE LOCATED ON ENTRANCE DOOR. VERIFY WITH OWNER BEFORE APPLYING.
33	BRICK SOLDIER COURSE FIELD COLOR - (RED).
34	ALUMINUM STOREFRONT FRAMING W/ INSULATED SPANDREL GLAZING. CAULK COLOR GRAY DYMONIC.
35	CO2 FILL BOX. SEE FLOOR PLAN FOR MOUNTING HEIGHTS.
36	RECESSED OIL FILL BOX. SEE FLOOR PLAN FOR MOUNTING HEIGHTS.

Exterior Door Color Code

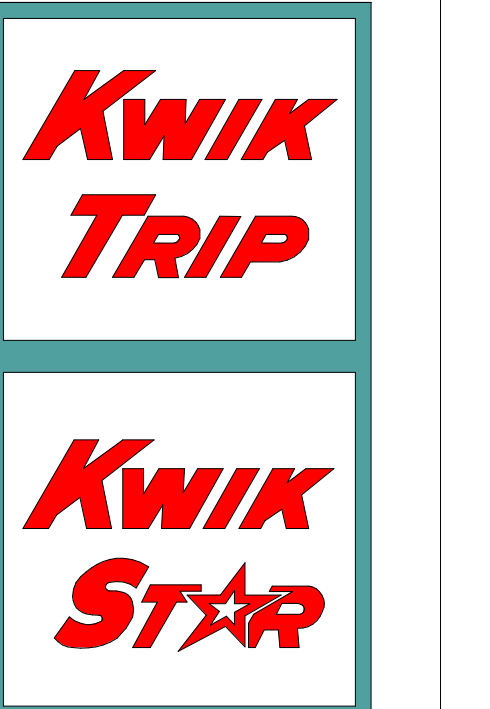
BAC Blend-a-Color	02	32	64	120
W1 White	-	12	1	-
B1 Black	-	24	1	-
R2 Maroon	-	19	-	-
R3 Magenta	-	26	1	1

EXTERIOR COLOR SCHEDULE

MATERIAL	MANUFACTURER	COLOR
BOLLARDS	--	BLACK, GLOSS
FASCIA	UNA-CLAD 24 GA.	REGAL RED ALMOND
GUTTERS & DOWNSPOUTS	--	ALMOND
SOFFIT	UNA-CLAD	ALMOND
METAL ROOF	UNA-CLAD	HEMLOCK GREEN
MORTAR	--	GREY
SEALANT	TREMCO DYMONIC	REDWOOD TAN
RED BRICK	TREMCO DYMONIC	LIMESTONE
TAN BRICK	TREMCO DYMONIC	HEMLOCK GREEN
ROOF CAP CAR WASH	UNA-CLAD	HEMLOCK GREEN
TAN BRICK	LEGENDARY	CLEAR BUFF
RED BRICK	LEGENDARY	CABERNET BURGUNDY
EIFS	TOTAL WALL	DIRTY MARTINI SWIRL TEXTURE
TRASH ENCLOSURE CAP	UNA-CLAD	HEMLOCK GREEN
BRICK LINTEL PAINT	TOTAL WALL	MORNING MIST (OR EQUAL)

EXTERIOR ELEVATION NOTES

- A. SEE FLOOR PLAN FOR WINDOW TYPE KEYS.
- B. CONTROL JOINT SEALANT TO MATCH VENEER COLOR.
- C. ALL DOWNSPOUTS TO CONNECT W/ BELOW GRADE DRAIN.
- D. VERIFY NUMBER OF GABLES AND LOCATION OF SIGNAGE WITH OWNER.
- E. CAST ALUMINUM BRICK VENT SHALL APPLY TO ALL STORES WITH CANOPY BRICK COLUMNS. REFER TO A100/A101 IF STORE REQUIRES BRICK COLUMNS
- F. CONTROL JOINTS LOCATED AT WINDOW AND DOOR LOCATIONS TO HAVE BACKER ROD AND SEALANT AT LOSSE LINTELS.



KWIK TRIP, Inc.
P.O. BOX 2107
1628 OAK STREET
LA CROSSE, WI 54602-2107
PH. (608) 781-8988
FAX (608) 781-8960

I HEREBY CERTIFY THAT THIS PLAN, SPECIFICATION, OR REPORT WAS PREPARED BY ME OR MY DIRECT SUPERVISOR AND THAT I AM A DULY LICENSED ARCHITECT UNDER THE LAWS OF THE STATE OF WISCONSIN.
SIGNATURE: JERREL SCHROEDER
DATE: 09/27/2024 REG. NO. 10110

I HEREBY CERTIFY THAT THIS PLAN, SPECIFICATION, OR REPORT WAS PREPARED BY ME OR MY DIRECT SUPERVISOR AND THAT I AM A DULY LICENSED PROFESSIONAL ENGINEER UNDER THE LAWS OF THE STATE OF WISCONSIN.
SIGNATURE: CARL R. FINE
DATE: 09/27/2024 REG. NO. 42645

PROJECT TITLE:
Store #1730 - G3-MN-LH-1CW-SV
Kwik Trip, Inc.
PROJECT LOCATION:
SW Intersection of 13th St SW & 6th Ave SW
Pine City, MN

JOB #: 1081.642
DATE: 09.27.2024
DRAWN BY: Author
TYPE: Permit Set
REVISIONS
NO. DATE

SHEET TITLE
Exterior Elevations

SHEET NO.
A200

750 N. Third Street
La Crosse, WI
Ph (608) 784-2729 Fax (608) 784-2826
54601