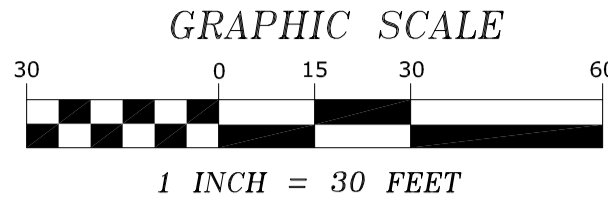


TREE INVENTORY/REMOVAL EXHIBIT

~for~ **BROOKSIDE CONSTRUCTION, INC.**
 ~of~ **BROOKSIDE TERRACE**
15156 NOWTHEN BOULEVARD
RAMSEY, MN 55303

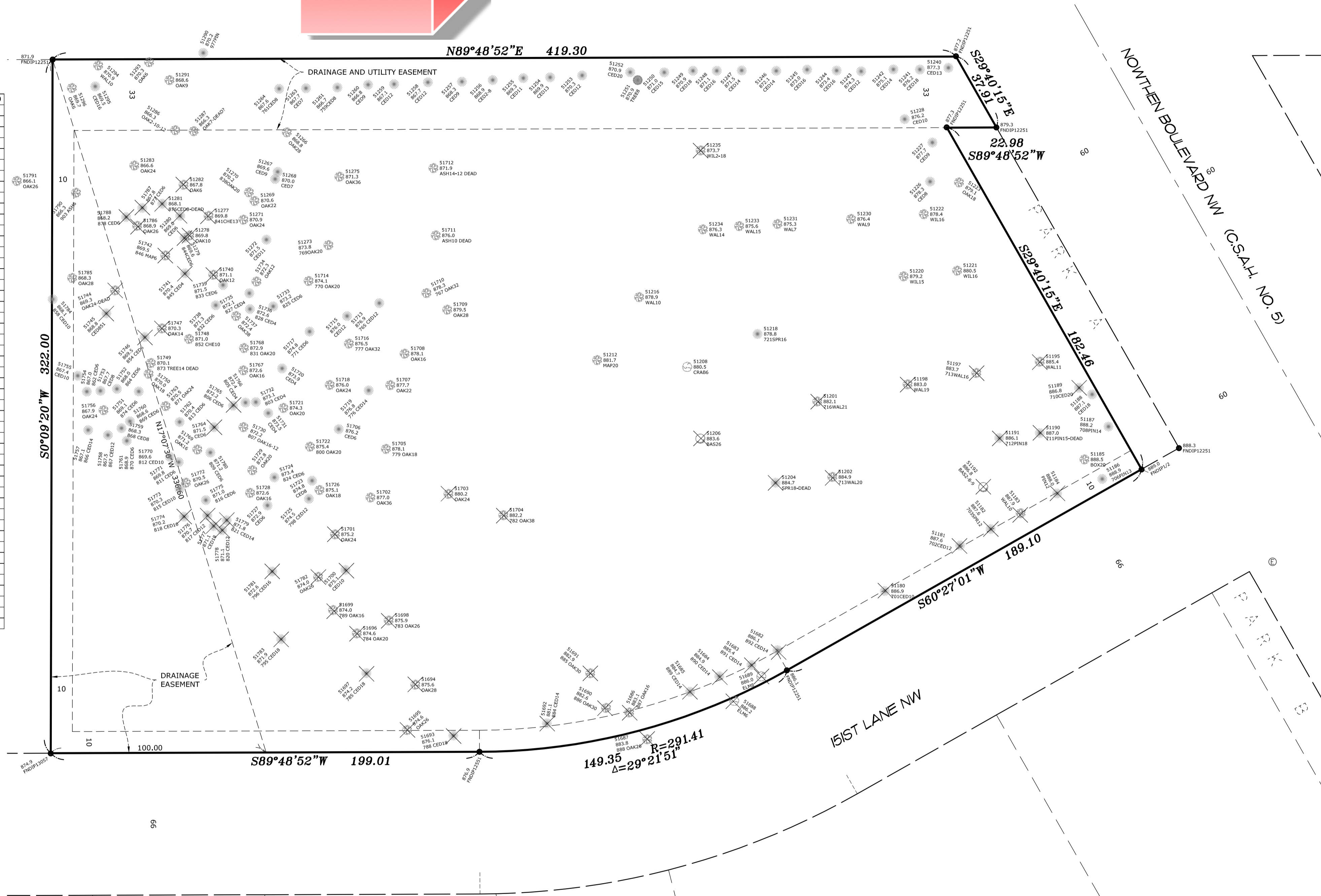
NORTH



POINT NUMBER	SPECIES	CALIPER	TO BE REMOVED
51180	CEDAR	10	X
51181	CEDAR	12	X
51182	SPRUCE	12	X
51183	WALL	10	X
51184	PINE	12	X
51185	BOX	20	
51186	PINE	13	
51187	PINE	14	
51188	CEDAR	18	
51189	CEDAR	20	X
51190	PINE	15	X
51191	PINE	18	X
51192	BASS	8	
51192	BASS	9	X
51195	WALL	11	X
51197	WALL	16	X
51198	WALL	19	X
51201	WALL	21	X
51202	WALL	20	X
51204	SPRUCE	18	X
51206	BASS	26	X
51208	CRAB	6	
51212	MAPLE	20	
51216	WALL	10	
51218	SPRUCE	16	
51220	WILL	15	
51221	WILL	16	
51222	WILL	16	
51223	OAK	18	
51226	CEDAR	8	
51227	CEDAR	9	
51228	CEDAR	10	
51230	WALL	9	
51231	WALL	7	
51233	WALL	15	
51234	WALL	14	
51235	WILL	18	X
51240	CEDAR	13	
51241	CEDAR	18	
51242	CEDAR	14	
51243	CEDAR	12	
51244	CEDAR	16	
51245	CEDAR	16	
51246	CEDAR	14	
51247	CEDAR	14	
51248	CEDAR	16	
51249	CEDAR	18	
51250	CEDAR	15	
51251	TREE	8	
51252	CEDAR	20	
51253	CEDAR	12	
51254	CEDAR	13	
51255	CEDAR	11	
51256	CEDAR	2	
51256	CEDAR	8	
51257	CEDAR	9	
51258	CEDAR	12	
51259	CEDAR	12	
51260	CEDAR	9	
51261	CEDAR	8	
51263	CEDAR	7	
51264	CEDAR	8	
51266	OAK	28	
51267	CEDAR	9	
51268	CEDAR	7	
51269	OAK	22	
51270	OAK	20	
51271	OAK	24	
51272	CEDAR	11	
51273	OAK	20	
51275	OAK	36	
51277	CHERRY	13	X
51278	OAK	10	X
51278	CEDAR	6	X
51280	CEDAR	6	X
51281	CEDAR	8	X
51282	OAK	6	X

POINT NUMBER	SPECIES	CALIPER	TO BE REMOVED
51283	OAK	24	
51286	OAK	10	
51286	OAK	12	
51287	OAK	7	
51291	OAK	9	
51293	OAK	6	
51294	WALL	10	
51295	CEDAR	16	
51296	OAK	6	
51682	CEDAR	14	X
51683	CEDAR	14	X
51684	CEDAR	14	X
51685	CEDAR	14	X
51686	OAK	16	X
51687	OAK	28	X
51688	ELM	6	X
51689	ELM	8	X
51690	OAK	30	X
51691	OAK	30	X
51692	CEDAR	14	X
51693	CEDAR	18	X
51694	OAK	28	X
51695	OAK	26	X
51696	OAK	20	X
51697	CEDAR	18	X
51698	OAK	26	X
51699	OAK	16	X
51700	CEDAR	10	X
51701	OAK	24	X
51702	OAK	36	X
51703	OAK	24	X
51704	OAK	38	X
51705	OAK	18	
51706	CEDAR	6	
51707	OAK	22	
51708	OAK	16	
51709	OAK	28	
51710	OAK	32	
51711	ASH	10	
51712	ASH	12	
51712	ASH	14	
51713	CEDAR	12	
51714	OAK	20	
51715	CEDAR	12	
51716	OAK	32	
51717	CEDAR	6	
51718	OAK	24	
51719	CEDAR	14	
51720	CEDAR	4	
51721	OAK	20	
51722	OAK	20	
51723	CEDAR	8	
51724	CEDAR	6	
51725	CEDAR	12	
51726	OAK	18	
51727	CEDAR	6	
51728	OAK	16	
51729	OAK	20	
51730	OAK	12	
51730	OAK	16	
51731	CEDAR	4	
51732	CEDAR	4	
51733	CEDAR	6	
51734	OAK	12	
51735	CEDAR	4	
51736	CEDAR	4	
51737	OAK	38	
51738	CEDAR	6	
51739	CEDAR	6	
51740	OAK	12	X
51741	CEDAR	4	X
51742	MAPLE	6	X
51744	OAK	24	X
51745	CEDAR	8	X
51746	CEDAR	6	X
51747	OAK	14	X
51748	CHERRY	10	

POINT NUMBER	SPECIES	CALIPER	TO BE REMOVED
51749	TREE	14	
51750	OAK	18	
51751	CEDAR	6	
51752	CEDAR	6	
51753	CEDAR	8	
51754	CEDAR	6	
51755	CEDAR	10	
51756	OAK	24	
51757	CEDAR	14	
51758	CEDAR	12	
51759	CEDAR	8	
51760	CEDAR	6	
51761	CEDAR	6	
51762	CEDAR	6	
51763	OAK	24	
51764	CEDAR	6	X
51765	CEDAR	6	X
51766	CEDAR	4	
51767	OAK	16	
51768	OAK	20	
51769	OAK	16	
51770	CEDAR	10	
51771	CEDAR	6	
51772	OAK	26	
51773	CEDAR	10	
51774	CEDAR	16	X
51775	CEDAR	6	
51776	CEDAR	12	X
51777	CEDAR	18	X
51778	CEDAR	12	X
51779	CEDAR	14	X
51780	CEDAR	6	
51781	CEDAR	16	X
51782	OAK	26	X
51783	CEDAR	18	X
51784	CEDAR	10	
51785	OAK	28	
51786	OAK	26	X
51787	CEDAR	6	X
51788	CEDAR	6	X
51790	ASH	6	
51791	OAK	26	
51837	MAPLE	10	
51884	MAPLE	16	
TOTAL 2800			
TO BE REMOVED 1006			
% TO BE REMOVED 36%			



EXISTING LEGAL DESCRIPTION

Lot 3, Block 1, HAUBRICH ADDITION, Anoka County, Minnesota.

BENCHMARK

BENCHMARK: ANOKA COUNTY BENCHMARK 2088
 ELEVATION: 886.831 (NAVD88)

TREE DETAIL

- DENOTES ELEVATION
- DENOTES TREE QUANTITY
- DENOTES TREE SIZE IN INCHES
- DENOTES TREE TYPE
- DENOTES TREE TO BE REMOVED

I hereby certify that this survey, plan or report was prepared by me or under my direct supervision and that I am a duly Registered Land Surveyor under the laws of the State of Minnesota.

JASON E. RUD
 Date: 7/14/2025 License No. 41578

DRAWN BY: RAF	JOB NO: 250376PP	DATE: 07-14-25
CHECK BY: JER	FIELD CREW: CB/MR	
1		
2		
3		
NO.	DATE	DESCRIPTION

E. G. RUD & SONS, INC.
 EST. 1977
 Professional Land Surveyors
 6776 Lake Drive NE, Suite 110
 Lino Lakes, MN 55014
 Tel. (651) 361-8200 Fax (651) 361-8701

1 - Timing of Tree Removal

Created by: Chris Anderson
On: 07/16/2025 10:46 AM

If tree removal occurs during the active oak wilt season, caution is needed to prevent the introduction of oak wilt on the property. If the stumps are not going to be removed at the same time as the trees, they must be painted with a wound sealant or latex paint to create a barrier to prevent oak wilt spores from entering a stump and potentially moving through the root system to another oak tree that is being preserved.

----- 0 Replies -----