



THE WATERFRONT

RAMSEY, MN

DECEMBER 14, 2023

DF/ DAMON FARBER LANDSCAPE ARCHITECTS

CONCEPT DEVELOPMENT

BACKGROUND - MASTER PLAN



BACKGROUND - PROGRAM ELEMENTS



PICNIC MOUND



REFLECTION POND / SHOAL



BOARDWALK



WATER PLAY & LIGHTING



BEER GARDEN



PLAZA



FLEXIBLE LAWN



DINING TERRACE

PROCESS - REGULATIONS & CODES



WADING POOL:

Wading pools are shallow pools that are usually less than two feet deep. They're best for young children to splash around and cool off without having to worry about swimming. Wading pools are governed by the MN pool code.

- **Defining Features:** 2' standing water depth, can also incorporate fountains, jets, structural play elements
- **Seasonal Interest:** Open when the temperature is 65 degrees and higher.
- **Depth**

Min: 2"	Max: 24"
---------	----------
- **Fencing:** Yes - code now requires a 48" high perimeter fence.
- **Rules:** Requires the direct supervision by an adult caregiver.
- **Revenue:** Possible - Staff could monitor access at fence gate.
- **Capacity:** Varies depending on size. 15 square feet per bather.
- **Approximate Days of Use:** 100



SPLASH PAD:

Traditional splash pads are fountain/water features intended for recreational use and designed to contain no more than 1 inch of water depth. Splash pads vary greatly in design, scale and features, but in general they allow users interact with bubblers, water nozzles and sprinklers and fountains.

- **Defining Features:** 1" max standing water depth with interactive fountains, jets, structural play elements
- **Seasonal Interest:** Open when the temperature is 65 degrees and higher.
- **Depth**

Min: 0" / Zero Entry	Max: 2"
----------------------	---------
- **Fencing:** Fencing is not required
- **Rules:** Not required, but recommended for caregivers to accompany and supervise children
- **Revenue:** If the design includes a fenced area - revenue generation is possible.
- **Capacity:** Varies depending on size. 15 square feet per bather.
- **Approximate Days of Use:** 100



ARCHITECTURAL WATER PLAY:

Custom experience for users. Artistic/sculptural features provide outdoor interest for users throughout all seasons. Contextually unique design affords users a sensory destination even when water features are not available.

- **Defining Features:** Integrated sculptural/interpretive water features
- **Seasonal Interest:** Open when the temperature is 65 degrees and higher. Lights and artistic/sculptural features provide 4 season interest.
- **Depth**

Min: 0" / Zero Entry	Max: 24"
----------------------	----------
- **Fencing:** Not required, but recommended for caregivers to accompany and supervise children
- **Rules:** If the design includes a fenced area - revenue generation is possible.
- **Revenue:** Somewhat (private/reserved private events)
- **Capacity:** Varies depending on size. 15 square feet per bather.
- **Approximate Days of Use:** 365

CASE STUDY - WATER FEATURE

CENTRAL PARK MAPLE GROVE, MN

- Equipment/Features: 49 Jet Sprays And 18 Arching Sprays
- Chlorinated: Fountain water is chlorinated and recycled through a filtration system in the lower level of the community building.
- Surrounding Area: Concrete & Unit Paver Hardscape Patio
- Water Depth: 0" / Spray Only
- Lighting: Led Lights Turn The Fountain Into A Light Show Once The Sun Goes Down
- Targeted Age Group: All Age Groups
- Seasons of Use: Open year-round (water in warmer temps)

WATER PLAY USER CAPACITY 150



Project Design By Damon Farber



CASE STUDY - WATER FEATURE

WABUN PARK WADING POOL MINNEAPOLIS, MN

- Equipment/Features: Wading Pool With Spraying Rock Structure
- Chlorinated: Fountain water is chlorinated and recycled through a filtration system and the water is reused just like in a swimming pool
- Surrounding Area: Concrete with Furnishings & Umbrellas
- Water Depth: Zero-Depth Entry To 24" Depth @ Deepest
- Fencing: Yes - 42" perimeter fencing per MN wading pool code.
- Targeted Age Group: Tot - 12 Years
- Seasons of Use: Summer Only

WATER PLAY USER CAPACITY 140



CASE STUDY - WATER FEATURE

ELEPHANT PARK LONDON, UK

- Equipment/Features: "Village" Pumps, Jets, Water Cascades, Rock Channels, Babbling Stream, Sand Pits
- Surrounding Area: Sand Play, Lawn, Stone Paving, Landscaping
- Water Depth: Zero-Depth Entry To 3"
- Lighting: Perimeter Post Lights
- Targeted Age Group: Tot - 18 Years
- Seasons of Use: Open year-round (water in warmer temps)

WATER PLAY USER CAPACITY 400



CASE STUDY - WATER FEATURE

MADRID RIO PARK MADRID, SPAIN

- Equipment/Features: Splash Pads with Water Jets
- Surrounding Area: Unit Pavers, Lawn, Landscaping
- Water Depth: Zero-Depth Entry To 1"
- Lighting: Park Lamp Posts
- Targeted Age Group: All Ages
- Seasons of Use: Open year-round (water in warmer temps)

WATER PLAY USER CAPACITY 900



SUMMARY - CASE STUDIES



4,000 SF OF WATER PLAY

CENTRAL PARK - MAPLE GROVE, MN

- Jet & Arching Spray Pad
- Recycled Water Via Filtration System
- Hardscape Perimeter Patio w/ Seatwalls
- 0" Depth Water - Spray Only
- Integrated LED Fountain Lighting
- No Fencing
- All Age Groups



6,500 SF OF WATER PLAY

WABUN WADING POOL - MINNEAPOLIS, MN

- Wading Pool With Spraying Rock Structure, Sprayers
- Recycled Water Via Filtration System
- 2 Umbrellas @ Patio
- Zero-Depth Entry To 24" Depth @ Deepest
- 42" Fencing
- Tot - 12 Years Targeted Age Group



10,000 SF OF WATER PLAY

ELEPHANT PARK - LONDON, UK

- "Village" Pumps, Jets, Water Cascades, Rock Channels, Babbling Stream, Sand Pits
- Chlorinated: Unknown
- Lush Planted Edges
- Zero-Depth Entry To 1"
- Perimeter Post Lights
- Fencing: Unknown
- Tot - 12 Years Targeted Age Group

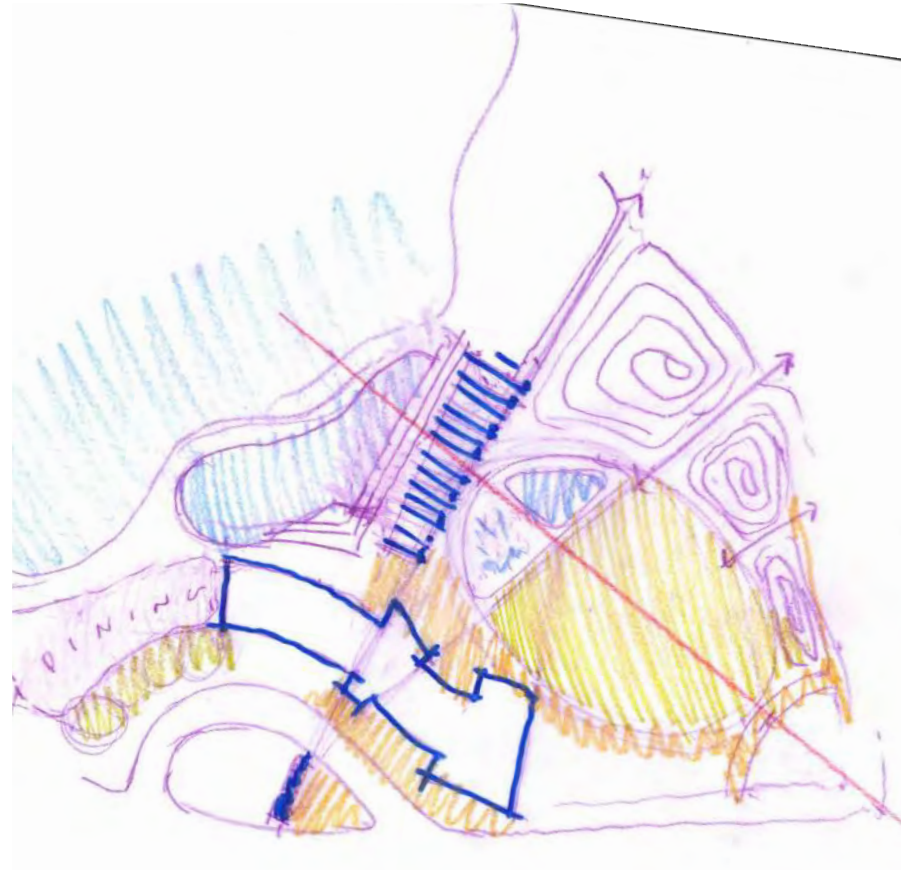


25,500 SF OF WATER PLAY

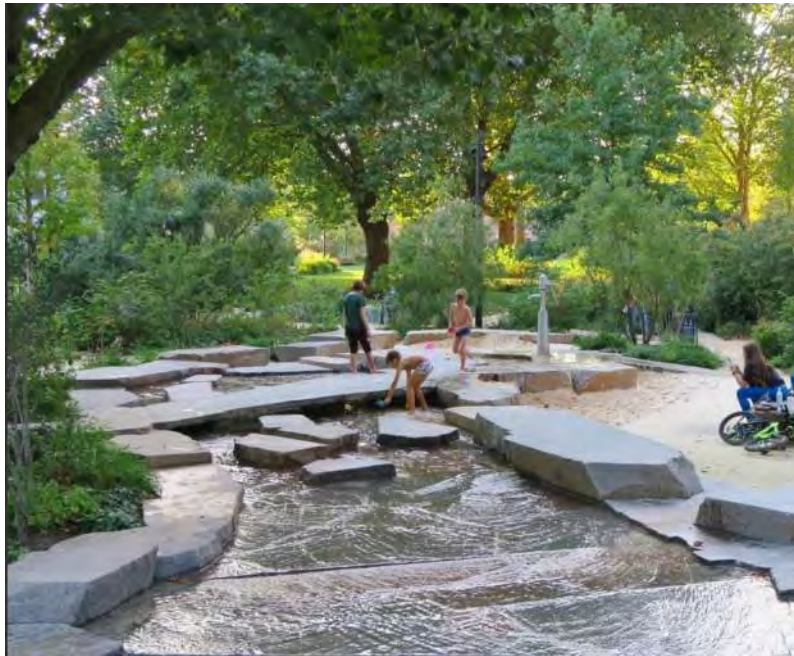
MADRID RIO PARK - MADRID, SPAIN

- Wading Pool Series (3), Jets
- Chlorinated: N/A
- Hardscape Perimeter With Grass And Planted Canopy
- Zero-Depth Entry To 24"
- Park Lamp Posts
- No Fencing
- All Age Groups

PROCESS - CONCEPT DEVELOPMENT



CONCEPT 1

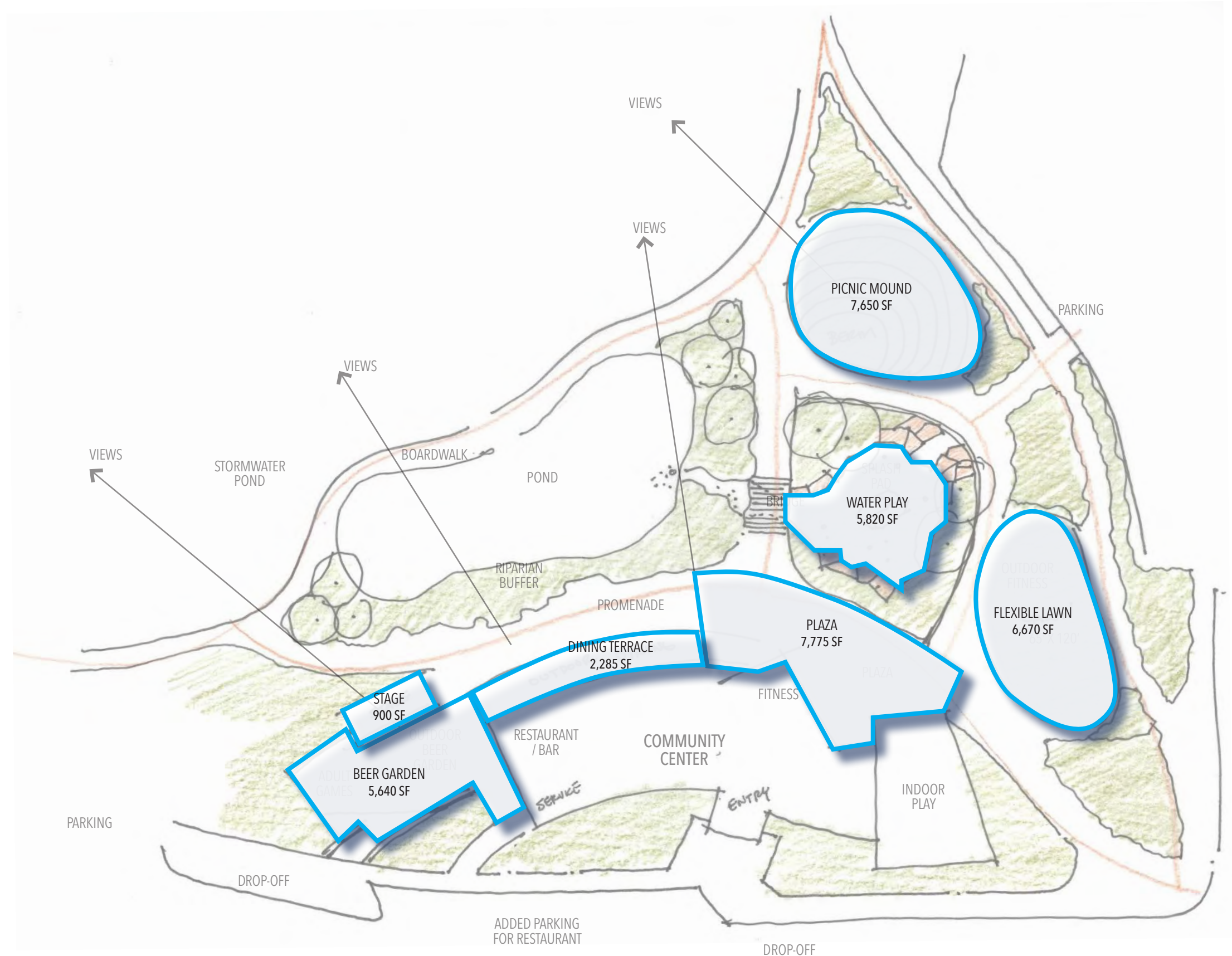


CONCEPT 1 PROGRAM

SPACE PROGRAMMING

FLEXIBLE LAWN	6,670 SF
PICNIC MOUND	7,650 SF
WATER PLAY	5,820 SF
PLAZA	7,775 SF
DINING TERRACE	2,285 SF
BEER GARDEN	5,640 SF
STAGE	900 SF

WATER PLAY USER CAPACITY 375



CONCEPT 1A

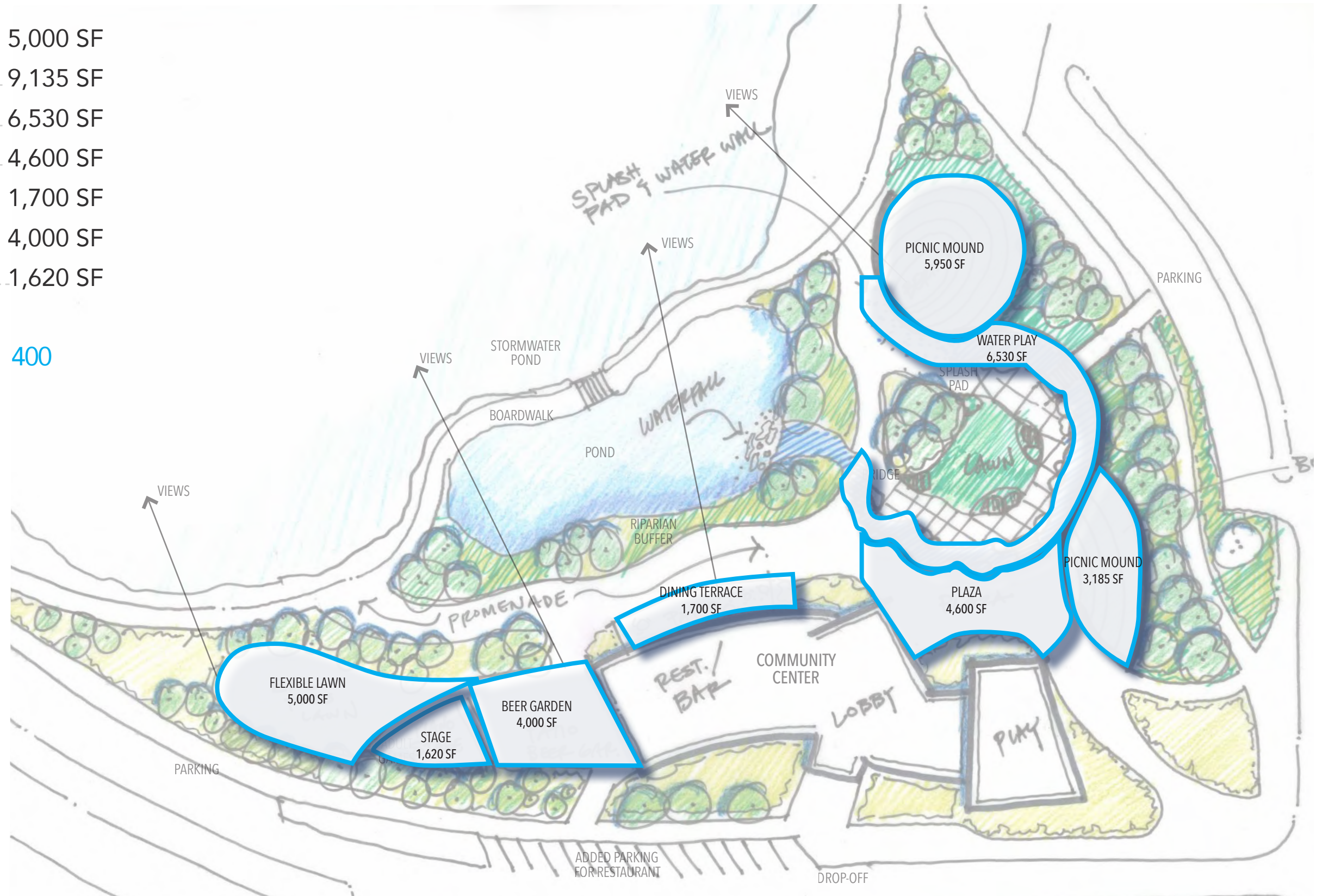


CONCEPT 1A PROGRAM

SPACE PROGRAMMING

FLEXIBLE LAWN	5,000 SF
PICNIC MOUND	9,135 SF
WATER PLAY	6,530 SF
PLAZA	4,600 SF
DINING TERRACE	1,700 SF
BEER GARDEN	4,000 SF
STAGE	1,620 SF

WATER PLAY USER CAPACITY 400



CONCEPT 2



CONCEPT 2 PROGRAM

SPACE PROGRAMMING

FLEXIBLE LAWN	9,730 SF
PICNIC MOUND	20,770 SF
WATER PLAY	1,800 SF
PLAZA	9,400 SF
DINING TERRACE	1,265 SF
BEER GARDEN	4,530 SF
STAGE	1,200 SF

WATER PLAY USER CAPACITY 120



CONCEPT 3

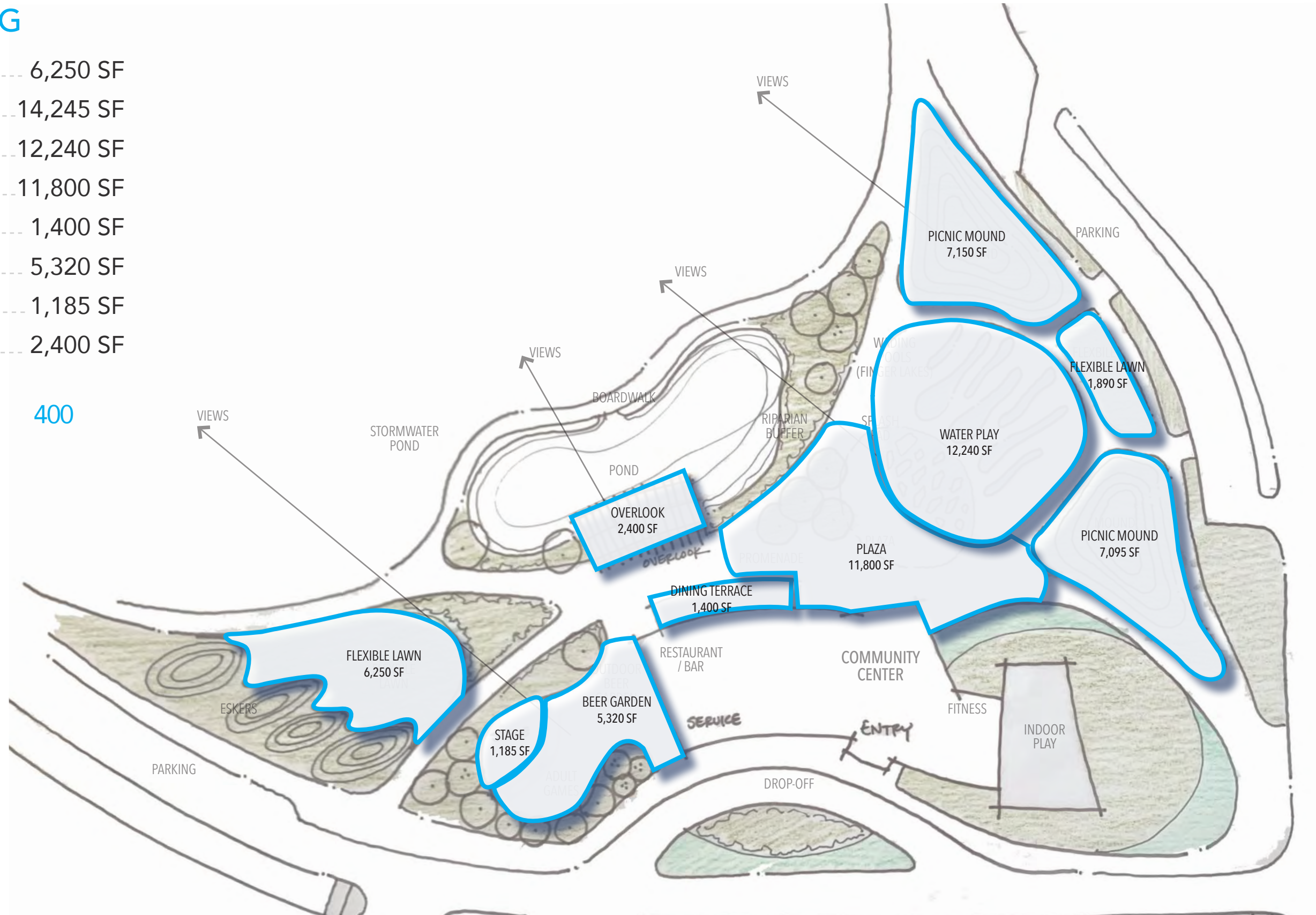


CONCEPT 3 PROGRAM

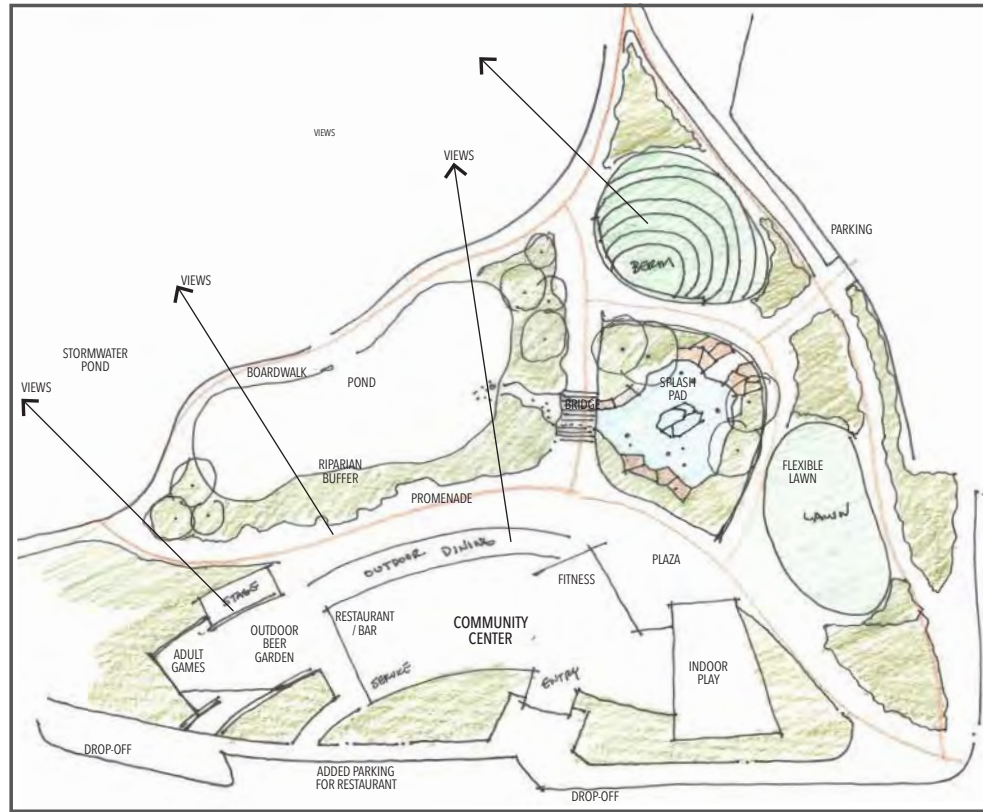
SPACE PROGRAMMING

FLEXIBLE LAWN	6,250 SF
PICNIC MOUND	14,245 SF
WATER PLAY	12,240 SF
PLAZA	11,800 SF
DINING TERRACE	1,400 SF
BEER GARDEN	5,320 SF
STAGE	1,185 SF
OVERLOOK	2,400 SF

WATER PLAY USER CAPACITY 400



SUMMARY - PROPOSED CONCEPTS



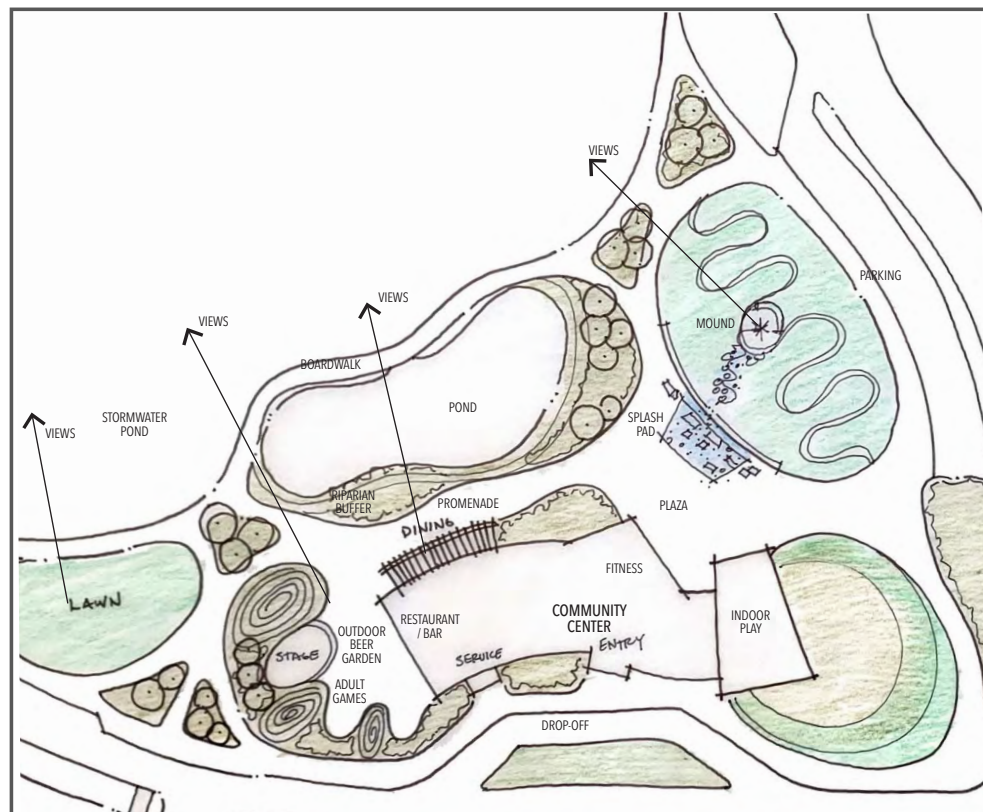
CONCEPT 1 SPACE PROGRAM

FLEXIBLE LAWN	5,000 SF
PICNIC MOUND	9,135 SF
WATER PLAY	6,530 SF
PLAZA	4,592 SF
DINING TERRACE	1,700 SF
BEER GARDEN	4,000 SF
STAGE	1,620 SF



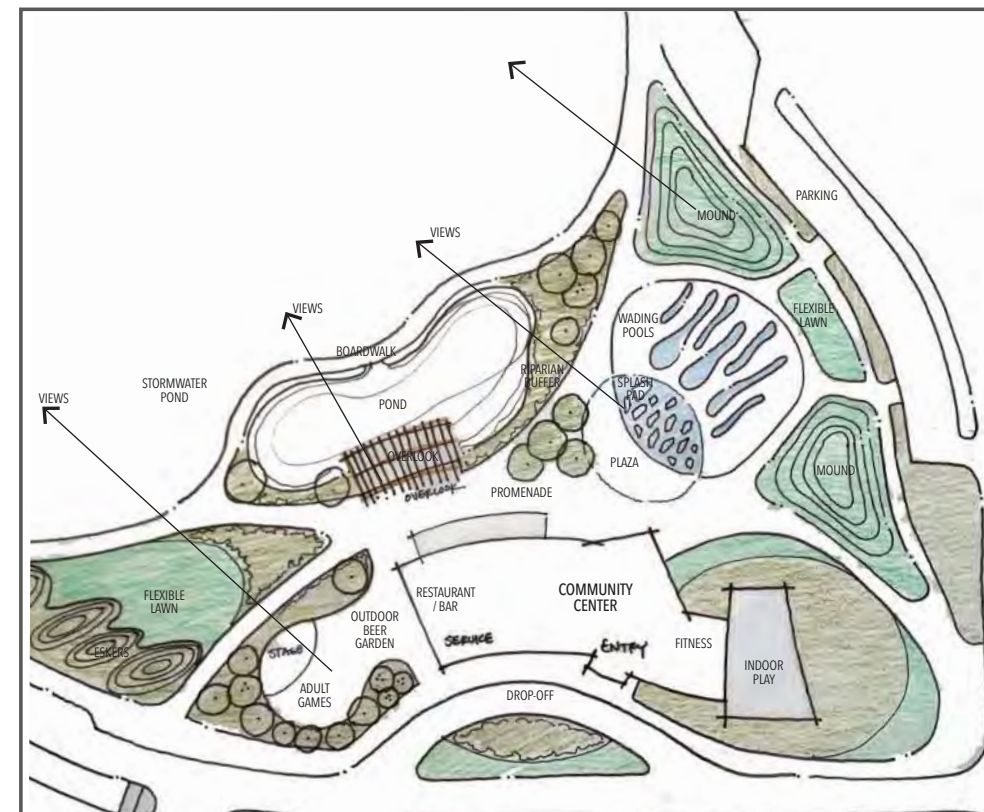
CONCEPT 1A SPACE PROGRAM

FLEXIBLE LAWN	6,670 SF
PICNIC MOUND	7,650 SF
WATER PLAY	5,820 SF
PLAZA	7,775 SF
DINING TERRACE	2,285 SF
BEER GARDEN	5,640 SF
STAGE	900 SF



CONCEPT 2 SPACE PROGRAM

FLEXIBLE LAWN	9,730 SF
PICNIC MOUND	20,770 SF
WATER PLAY	2,000 SF
PLAZA	9,400 SF
DINING TERRACE	1,265 SF
BEER GARDEN	4,530 SF
STAGE	1,200 SF



CONCEPT 3 SPACE PROGRAM

FLEXIBLE LAWN	6,250 SF
PICNIC MOUND	14,245 SF
WATER PLAY	12,240 SF
PLAZA	11,800 SF
DINING TERRACE	1,400 SF
BEER GARDEN	5,320 SF
STAGE	1,185 SF
OVERLOOK	2,400 SF

WATER FEATURE COSTS

Costs for water features vary dramatically and are driven by the following factors:

- > Size of the Water Feature
- > Equipment and Filtration System
- > Programming & Control Systems
- > Lighting & Sound Systems
- > Construction Materials
- > Amenities
- > Bidding Climate & Number of Bidders

The conceptualized water features included in this presentation have an estimated probable cost of \$1m to \$3m.