

**City of Ramsey**  
**Agenda**  
**Park and Recreation Commission**  
**Thursday, June 12, 2025**  
**6:30 pm**  
**The Draw, 7401 E Ramsey Parkway NW**

Remote Attendance available at [www.cityoframsey.com/meetings](http://www.cityoframsey.com/meetings).  
Those joining remotely and requesting to speak are asked to use a webcam when speaking.

1. **Call to Order**
  
2. **Citizen Input**
  
3. **Approve Agenda**
  
4. **Approve Minutes**
  1. Approve the following meeting minutes.
    1. Park and Recreation Commission meeting dated May 8th, 2025.
  
5. **Commission Business**
  1. The Waterfront - Water-Play and Eastern Park Development Process
  
6. **Commission/Staff Input**
  1. May Recreation Program Update
  
7. **Adjournment**

**Park and Recreation Commission**

**Meeting Date:** 06/12/2025

**Primary Strategic Plan Initiative:** Connect the community through Parks, Trails and Recreational Programming.

**Information**

**Title:**

Approve the following meeting minutes.  
1. Park and Recreation Commission meeting dated May 8th, 2025.

**Purpose/Background:**

To review and approve meeting minutes.

**Notification:**

N/A

**Time Frame/Observations/Alternatives:**

Staff anticipates this case will take less than 5 minutes.

**Funding Source:**

N/A

**Recommendation:**

To review and approve meeting minutes dated May 8th, 2025.

**Outcome/Action:**

Motion to approve meeting minutes dated May 8th, 2025.

**Attachments**

P & R Minutes May 8th, 2025

**Form Review**

**Inbox**

Brian Hagen

Form Started By: Mariah Albrecht

Final Approval Date: 06/05/2025

**Reviewed By**

Kathy Schmitz

**Date**

06/05/2025 03:24 PM

Started On: 06/05/2025 02:01 PM

**PARK AND RECREATION COMMISSION  
CITY OF RAMSEY  
ANOKA COUNTY  
STATE OF MINNESOTA**

The Ramsey Park and Recreation Commission conducted a regular meeting on Thursday, May 8, 2025, at the Loral I Delany Central Park, 7925 161<sup>st</sup> Avenue NW, Ramsey, Minnesota.

Commission Members Present:      Chair Megan Ealain  
   Vice Chair Nathan Barten  
   Commissioner Garth Anderson  
   Commissioner Todd Arts  
   Commissioner Shane Bennett  
   Commissioner Dean Olson  
   Commissioner Brandon Sis

Commission Members Absent:

Also Present:                              City Council Liaison Kirsten Buscher  
   Parks & Assistant Public Works Director Mark Riverblood  
   Recreation Coordinator Abby Proulx

**1.      CALL TO ORDER**

Chair Ealain called the Park and Recreation Commission meeting to order at 6:34 p.m.

**2.      CITIZEN INPUT**

None.

**3.      APPROVE AGENDA**

Motion by Commissioner Olson, seconded by Commissioner Bennett, to approve the Park and Recreation Commission meeting agenda as presented.

Motion carried. Voting Yes: Chair Ealain; Commissioners Olson, Bennett, Anderson, Arts, Barten, and Sis. Voting No: None. Absent: None.

**4.      APPROVE MINUTES**

**4.01:   Approve Park and Recreation Commission Meeting Minutes**

Motion by Commissioner Barten, seconded by Commissioner Bennett, to approve the following Park and Recreation Commission Regular Meeting Minutes:

- Park and Recreation Commission Meeting Minutes dated April 10, 2025

Motion carried. Voting Yes: Chair Ealain; Commissioners Barten, Bennett, Anderson, Arts, Olson, and Sis. Voting No: None. Absent: None.

**5. COMMISSION BUSINESS**

**5.01: 2025 Playground Replacement – Central Park**

Parks & Assistant Public Works Director Riverblood provided background information on the replacement of the Central Park playground, which is substantially completed. He reported that the project came in slightly under budget. He stated that the playground appears to be a success, noting the large number of children in attendance playing on the equipment tonight.

Chair Ealain commented on the positive comments the Commission members have received tonight.

Parks & Assistant Public Works Director Riverblood highlighted pieces of equipment within the playground as well as the two diggers still to be reinstalled.

**6. COMMISSION/STAFF INPUT**

**6.01: Recreation Program Update**

Recreation Coordinator Proulx reviewed the recreation program update. She also provided a brief update on the community art program and explained how the input they gather will be used to shape the program going forward. She highlighted information on the upcoming Two Rivers Art Fair event.

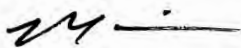
**7. ADJOURNMENT**

Motion by Commissioner Barten, seconded by Commissioner Bennett, to adjourn the meeting.

Motion carried. Voting Yes: Chair Ealain; Commissioners Barten, Bennett, Anderson, Arts, Olson, and Sis. Voting No: None. Absent: None.

The Park and Recreation Commission meeting adjourned at 6:43 p.m.

Respectfully submitted,



---

Mark Riverblood  
Parks & Assistant Public Works Director

Drafted by Amanda Staple  
*TimeSaver Off Site Secretarial, Inc.*

**Park and Recreation Commission****Meeting Date:** 06/12/2025**Primary Strategic Plan Initiative:** Connect the community through Parks, Trails and Recreational Programming.**Information****Title:**

The Waterfront - Water-Play and Eastern Park Development Process

**Purpose/Background:**

*Note: this case content is largely the same as the City Council case for June 10th, 2025—and is provided here, so as to brief the Park & Recreation Commission on Council's action earlier in the week. Additional information will be provided at the meeting.*

As part of the city's community park system planning, a water-centric park known as The Waterfront has been envisioned for more than a decade in Ramsey's downtown. In 2023, the mass grading for the park was completed as part of the preparation of pad-ready development of the entire northwest quadrant of The COR. In 2024 the surrounding streets were constructed together with parking for the build-out of the park. Also last Fall, basic landscaping was completed, with a trail that circumnavigates the 7-acre deep-water pond, and connects the park to the adjoining residential areas and greater community.

Throughout and during the last 10 years of planning for the park, city leaders have simultaneously heard a common refrain from many residents that they desire more family destinations, more restaurants, a splash pad and a community center. These resident propositions were considered as the Park & Recreation Commission developed concept plans for the park that would address those aspirations. Over the last two years, the Commission performed a detailed analysis of how a park building could best serve the community— this process resulted in a concept for an approximate 36,000 square foot two-story building, consisting of mass timber construction; and including dining, balcony, patio and beer garden, room rental and fitness areas, large indoor play area, and banquet space. The proposed structure with indoor and outdoor program areas would essentially be a modern community center, with outdoor water-play elements replacing a traditional public swimming pool and gym. The Park & Recreation Commission also delved into concept planning for the proposed water-play at the east side of The Waterfront that would be closely aligned with the community building—with that planning work and case studies included as the second attachment, and as background information.

Earlier this year, City Council developed its 2025 Strategic Plan that included a high-level work plan for The Waterfront. That plan prescribes a fast-track process for the development of a quality, fully-functional water-play area of the park for July of 2026—and thus is the subject of this week's cases.

**Time Frame/Observations/Alternatives:**

City Council's 2025 Strategic Plan calls for a plan and process to be implemented in June of this year in order to meet the goal of having the water-play park improvements completed and open to the public in July of next year, (an aggressive, but achievable schedule). Included with this case is a plan and scope of work that will deliver this new park amenity for Ramsey residents in this timeframe. As the 8-page proposal lays forth the sequences and complexity of all the work to be performed, that in-depth narrative and specifics are not copied into this case's text, please see Damon Farber's proposal as the first attachment.

**Funding Source:**

The funding for the year-long work totaling an estimated \$268,900, would be from the Park Trust Fund which has a present balance in excess of \$7M.

The park construction budget would be determined as part of the bidding to be done in the Winter of 2025-26 and would be funded also by the Park Trust Fund, after separate and subsequent actions by the Park & Recreation Commission and City Council.

Note: while the recommendation to City Council was to authorize a not-to-exceed amount of \$268,900 for the necessary planning, design development and ultimate construction administration for the park project, the work and associated fees may be stopped at any time, at the discretion of the city.

**Recommendation:**

Staff recommended acceptance of Damon Farber's proposal for professional services, as the Park & Recreation Commission has been working toward this goal for two years, and City Council was briefed that the Commission would acknowledge this investment at the June 12th, 2025 regular meeting.

**Outcome/Action:**

No action required—this case is informational.

---

**Attachments**

Design, development and construction proposal  
Water play planning - P & R  
2025 Strategic Plan Objectives

**Form Review**

<b>Inbox</b>	<b>Reviewed By</b>	<b>Date</b>
Bruce Westby	Bruce Westby	06/06/2025 12:38 PM
Brian Hagen	Mariah Albrecht	06/06/2025 12:39 PM
Form Started By: Mark Riverblood		Started On: 06/05/2025 01:31 PM
Final Approval Date: 06/06/2025		



June 4, 2025

Mr. Mark Riverblood,  
Parks & Asst. Public Works Director  
City of Ramsey  
7550 Sunwood Drive NW  
Ramsey, MN 55303

[RE: Design Proposal - The Waterfront Water Play & Partial Park Site](#)

Dear Mark,

We understand the City of Ramsey is ready and excited to design, build, and enjoy a community architectural water play feature – one that brings families and children together to recreate on warm days in the center of the community they call home. This outdoor water play will be a key amenity within a larger park called *The Waterfront*.

*The Waterfront*, a long planned public parcel originally master planned as part of “*The COR at Ramsey*” is taking shape. Envisioned as an extension of *The Draw*, *The Waterfront* has an axial alignment with the Municipal Center to the south and *The Draw* to the east. The Waterfront’s newly created central water feature functions as a critical 7+ acre stormwater management water body receiving runoff from surrounding parcels and roadways. Extending recreational opportunities for residents and visitors – we planned and developed construction documents for the trail system which now circumnavigates the pond and connects to surrounding neighborhoods including trails leading east to *The Draw*.

The long-term vision adds a community building at the southeast corner of *The Waterfront* and is intended to support a restaurant, community rooms, indoor play space, fitness, restrooms, changing rooms, and concessions. Immediately adjacent to this facility are planned outdoor amenities including a beer garden, small kayak/SUP marina, plaza, stormwater management features, earthen berms, landscaping, and gardens.

The water play feature will have a strong relationship with the future community building but will come online a year or more prior to the building. These contrasting timelines necessitate coordination and planning with your building architects to understand the desirable building site layout, approximate footprint and intended outdoor amenity spaces. That understanding and planning will provide the insights needed to locate the water play feature for 2026 construction, while allowing a buffer to construct the building at some point in the future. The building site development can then stitch the two projects together as seamlessly as possible.

## WORK PLAN

On behalf of our team, and with the stated project understanding, we are excited to partner with the community once again to design the water play feature and immediate surrounding park context. This work plan includes services for schematic design through construction administration for a portion of *The Waterfront* including the water play and immediate surrounding context.

## PROJECT TEAM

### City of Ramsey

- Project Lead – Mark Riverblood – Parks & Asst. Public Works Director
- Consulting Planner – Bruce Jacobson
- Consulting Architect - Cunningham – Greg Houck, AIA

### Prime Design Consultant

- Damon Farber Landscape Architects – Chuck Evens, PLA, Assoc. Principal & Project Manager

### Subconsultants

- Civil Engineer – Rehder & Associates – Nick Adams, PE
- Electrical Engineer – Nelson Rudie & Associates – Jeffrey Piehl, PE
- Aquatics Engineer – Aquatic Design Solutions, LLC – Jody Dahms, PE

## DESIGN PROGRAMMING VISION



## PROJECT SCOPE

- 12,500 sq foot water play space
- Surrounding park context: including walkways, landscaping, seating, lighting, fencing, etc.
- Shaded pavilion/ pergola space(s) for group rental
- Dozens of jets to accommodate water play for 400+ children
- Run-through system (not recirculated water)
- Vault for mechanicals – (in earthen berm with man door preferred or below ground with hatch)
- Site lighting
- LED lighting in water jets
- Power supply to site, mechanical vault, site lighting
- Dedicated and landscaped pad space for interim restrooms

## OUR PROCESS – YOUR SUCCESS

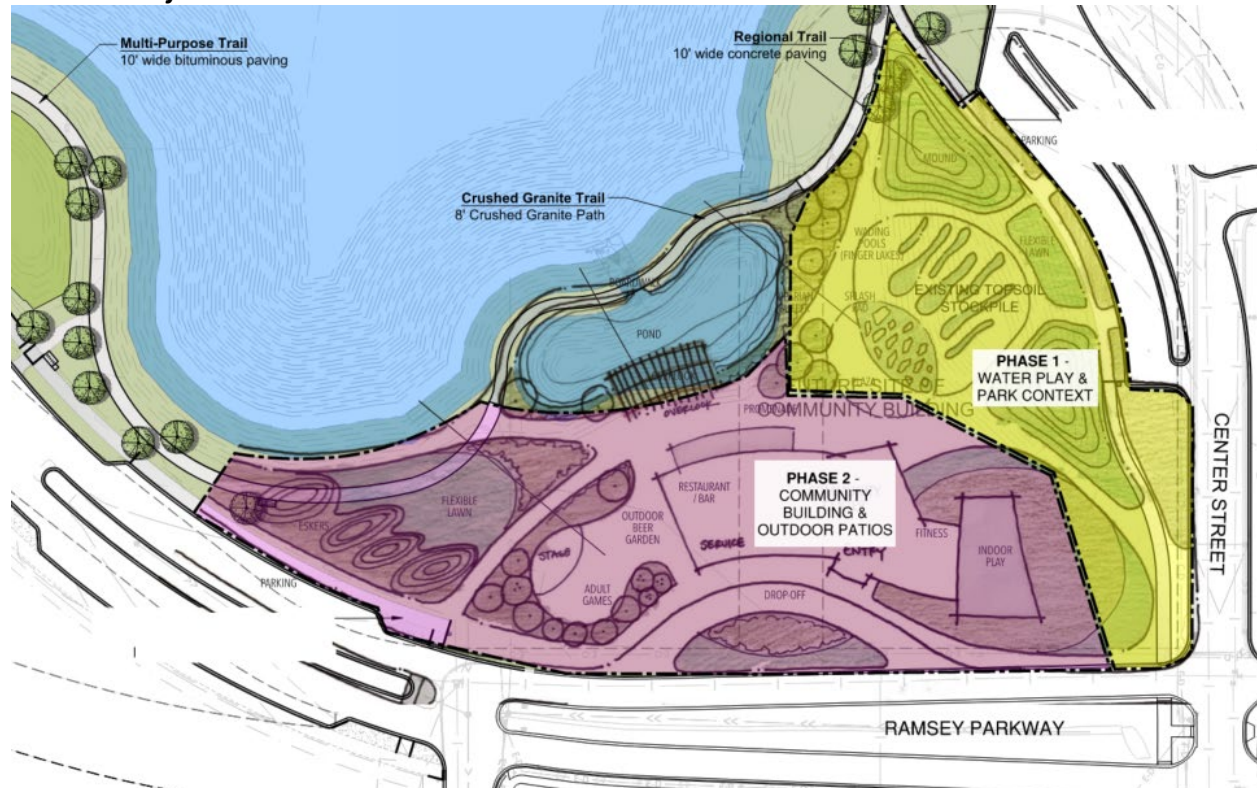
The Schematic Design phase serves as the critical first step in transforming the city’s programmatic needs, vision, and project goals into a tangible design. This phase results in a set of preliminary design documents—including site plans, mechanical schematics, material palettes, preliminary grading plans, and architectural renderings—that begin to physically express the project's intent.

A key focus during this stage will be the integration and articulation of the proposed water play feature. The design will explore how this element supports the broader site narrative, contributes to user experience, and connects meaningfully to the future community building. Placement, scale, interaction zones, and seasonal adaptability of the features will be thoughtfully considered to ensure long-term functionality and community value.

Our process will be collaborative and iterative, involving close coordination among the design team, including architects, landscape architects, engineers, and the city. Stakeholder input and iterative feedback will shape the evolving design direction, ensuring alignment with both functional needs and aesthetic aspirations.

Deliverables at the end of the schematic design phase will provide a clear visual and technical framework that supports early cost estimating and scheduling. These documents serve as the foundation for the following phases of design development and construction documentation, setting the tone for a coherent and successful project execution.

### PHASE 1: Project Limits Exhibit:



## **TASK 1: SCHEMATIC DESIGN (30%)**

### ***Services:***

1. Design charrette in collaboration with Cunningham, conduct a design charrette - exploring past planning efforts, new site constraints, connectivity, utilities, elevations, and contextual influences. The charrette will help establish parameters for future building placement – and begin to establish project boundaries. Additionally, the charrette will generate options for restroom services for 2026 and beyond (interim restrooms or stand-alone building).
2. Develop Design & Preliminary Drawings Following the outcomes from the design charrette our team will begin to draft a preliminary layout of the water play feature and surrounding immediate park context. This plan will translate concepts and programming into a defined plan with preliminary layout, sizing, and amenities.
3. Refine Design & Prepare Mechanical Schematics Develop materials plan and refined preliminary plan for water play. Prepare mechanical schematics including water jets, spray nozzles, drainage, mechanical system pumps and filtration, and size and locate the mechanical room/vault.
4. 3D Modeling & Illustrative Renderings 3D-Model and Illustrate the design to a level of artistry which helps others understand the vision and appreciate the design direction. Modeling is a useful design tool offering a realistic view prior to further design and construction efforts.
5. Finalize Drawings Finalize schematic design drawings and documents for the water play feature and park context allowing for Owner review, and for a construction firm to review, estimate the works value, and establish a construction timeline.
6. Issue Schematic Design for review and contractor pricing if desired.

### ***Deliverables:***

- Meeting notes
- Schematic design drawing set (30% Set)
- Presentation graphics
- SD narrative/outline specs

### ***Meetings:***

- SD Kickoff Meeting
- Design Progress & Review Meetings (2 in person / 4 virtual)

## **TASK 2 – DESIGN DEVELOPMENT (65%)**

Upon approval of the Schematic Design (30%) set, our team will prepare Design Development (65%) drawings and specifications. The Design Development phase of the work will include further refinement of the placemaking, water play, landscape, artistic elements, park structures, stormwater management, planting design, grading and drainage, pedestrian circulation, shade structures, site furnishings, and site lighting. Specific tasks will include the following:

### ***Services:***

- Prepare Design Development (65%) drawings addressing the following: Public space and water play layout and materials
  - Pedestrian circulation
  - Interpretive elements
  - Stormwater management
  - Site/shade rentable structures
  - Site lighting
  - Site furnishings & fencing
  - Artistic elements
  - Planting design
  - Grading and drainage
  - Utility relocations (as needed)
1. Prepare plans, cross sections, and construction details.
  2. Finalize material selections.
  3. Prepare preliminary technical specifications.
  4. Conduct city staff and agency coordination, and quality control review on the 65% set of drawings and specifications.
  5. Provide necessary agency review and city submittal documents.
  6. Refine drawings and specifications based on project coordination, city and agency review.

#### **Meetings**

- Bi-weekly city staff meetings (2 in person / 4 virtual)
- Stakeholder, agency and project partner meetings (as needed)

#### **Deliverables**

- Design Development (65%) package - plans, sections, elevations, construction details, and specifications
- Meeting notes

### **TASK 3 – CONSTRUCTION DOCUMENTATION (95%)**

Upon approval of design development documents, we will prepare construction documents and technical specifications for all site design elements approved in the design development phase of the work. Specific tasks will include the following:

#### **Services:**

1. Prepare Construction Document (95%) drawings addressing the following:
  - Public space and water play layout and materials
  - Placemaking and public art opportunities
  - Pedestrian circulation
  - Interpretive elements
  - Stormwater management
  - Site/shade structures
  - Site lighting
  - Site furnishings & fencing
  - Planting design
  - Grading and drainage
  - Utility relocations
2. Prepare plans, cross sections, and construction details.
3. Prepare final technical specifications.

4. Conduct city staff and agency coordination, and quality control review on the 95% set of drawings and specifications.
5. Provide necessary agency review and city submittal documents.
6. Refine drawings and specifications based on project coordination, city and agency review.

**Meetings**

- Bi-weekly city staff meetings (2 in person / 4 virtual)
- Stakeholder, agency and project partner meetings (as needed)
- MN Department of Health meeting

**Deliverables**

- Construction Document (95%) package - plans, sections, elevations, and construction details
- Meeting notes

**TASK 4 – BIDDING DOCUMENTS (100%)**

Upon approval of Construction Documents (95%), our team will prepare all necessary Bidding Documents (100%) and assist the City of Ramsey with the selection of a Contractor(s) to construct the approved public space and water play design. Specifically, the following will be provided:

1. Prepare all necessary bidding documents including 100% construction drawings and technical specifications.
2. Documents shall conform to all applicable laws, statutes, City ordinances, building codes and other regulatory requirements.
3. Submit bid packet for public bidding.
4. Attend pre-bid meeting and issue any necessary addenda.
5. Attend bid opening, review received bids and provide letter of recommendation for bid award.

**Meetings:**

- Pre-bid meeting (1)
- Bid opening (1)

**Deliverables:**

- Meeting notes
- 100% drawings and technical specifications
- Bidding documents/project manual

**TASK 5 – CONSTRUCTION ADMINISTRATION**

Our team will assist City staff with construction observation and administration services including, but not limited to the following:

**Services:**

1. Participate in site meetings including pre-construction meeting, regular site construction meetings, on-site review, observation, and approval of all park design elements. To save the city money we anticipate participating in most construction meetings virtually.

2. Provide construction administration services including submittal review and consultant coordination, issuing RFIs, ASI's, pay application reviews, substantial completion punch list, final review, and warranty review.

**Meetings:**

- Pre-construction meeting (1)
- Construction meetings (weekly during construction/virtual)
- As-needed site observation

**Deliverables:**

- Meeting notes
- Construction observation reports
- RFI responses
- ASI's
- Submittal and shop drawing approvals
- Draft and final punch lists

**ASSUMPTIONS**

The scope of work and fees included in this proposal include the following assumptions:

- The previous water play programming document, and recent design charrette form the basis for the scope and fee for this work.
- Fees are based on work tasks and gauged on a percentage of construction cost per the anticipated project budget of three-million dollars. If the project scope is reduced or the budget lowered making the project less complicated, we can renegotiate scope and fee with the city to bring scope and fee in line with the reduced scope of the project.
- Scope and fees include civil engineering, aquatic engineering, and electrical engineering.
- Submittal costs to MN Department of Health and permits will be by Owner

The above-mentioned scope of work does not include the services listed below. If necessary, we will contract with subconsultants to fill any gaps in professional expertise to complete the project on time and on budget:

- Architecture
- Irrigation design (assumes design build by contractor)

**SCHEDULE OF WORK (Fast-tracked)**

	June	July	Aug	Sept	Oct.	Nov	Dec	Jan	April	May	Jun	Jul
Schematic Design	■	■										
Design Development			■	■								
Construction Documents					■	■						
Advertise for Bid						■						
Bidding & Contracting							■	■				
Construction Admin									■	■	■	
Target Opening												■*

**FEES**

The professional fees proposed below have been developed based on an estimated construction budget of \$3,000,000. The total design and engineering team fees represent approximately 8.9% of this construction budget. This percentage is at or below industry standards for the scope and complexity of work anticipated, and includes all necessary services to deliver a complete, coordinated design through to construction documentation and administration.

Work Item	Fee
Task 1 – Schematic Design	67,255
Task 2 – Design Development	63,432
Task 3 – Construction Documents	77,638
Task 4 – Bid Documents	13,263
Task 5 – Construction Admin	45,412
Reimbursable Expenses	1,900
<b>Total</b>	<b>\$268,900</b>

Mark, please let us know if you have any questions or concerns. Our team looks forward to furthering our relationship as we work collaboratively to help the City of Ramsey realize this long-planned community asset.

Sincerely,  
 Damon Farber Associates

City of Ramsey



Chuck Evens, PLA  
 Associate Principal

Mark Riverblood,  
 Parks & Assistant Public Works Director



# THE WATERFRONT

RAMSEY, MN

DECEMBER 14, 2023

**DF/ DAMON FARBER LANDSCAPE ARCHITECTS**

CONCEPT DEVELOPMENT

# BACKGROUND - MASTER PLAN



# BACKGROUND - PROGRAM ELEMENTS



PICNIC MOUND



REFLECTION POND / SHOAL



BOARDWALK



WATER PLAY & LIGHTING



BEER GARDEN



PLAZA



FLEXIBLE LAWN



DINING TERRACE

# PROCESS - REGULATIONS & CODES



## WADING POOL:

Wading pools are shallow pools that are usually less than two feet deep. They're best for young children to splash around and cool off without having to worry about swimming. Wading pools are governed by the MN pool code.

- **Defining Features:** 2' standing water depth, can also incorporate fountains, jets, structural play elements
- **Seasonal Interest:** Open when the temperature is 65 degrees and higher.
- **Depth**  
Min: 2"      Max: 24"
- **Fencing:** Yes - code now requires a 48" high perimeter fence.
- **Rules:** Requires the direct supervision by an adult caregiver.
- **Revenue:** Possible - Staff could monitor access at fence gate.
- **Capacity:** Varies depending on size. 15 square feet per bather.
- **Approximate Days of Use:** 100



## SPLASH PAD:

Traditional splash pads are fountain/water features intended for recreational use and designed to contain no more than 1 inch of water depth. Splash pads vary greatly in design, scale and features, but in general they allow users interact with bubblers, water nozzles and sprinklers and fountains.

- **Defining Features:** 1" max standing water depth with interactive fountains, jets, structural play elements
- **Seasonal Interest:** Open when the temperature is 65 degrees and higher.
- **Depth**  
Min: 0" / Zero Entry      Max: 2"
- **Fencing:** Fencing is not required
- **Rules:** Not required, but recommended for caregivers to accompany and supervise children
- **Revenue:** If the design includes a fenced area - revenue generation is possible.
- **Capacity:** Varies depending on size. 15 square feet per bather.
- **Approximate Days of Use:** 100



## ARCHITECTURAL WATER PLAY:

Custom experience for users. Artistic/sculptural features provide outdoor interest for users throughout all seasons. Contextually unique design affords users a sensory destination even when water features are not available.

- **Defining Features:** Integrated sculptural/interpretive water features
- **Seasonal Interest:** Open when the temperature is 65 degrees and higher. Lights and artistic/sculptural features provide 4 season interest.
- **Depth**  
Min: 0" / Zero Entry      Max: 24"
- **Fencing:** Not required, but recommended for caregivers to accompany and supervise children
- **Rules:** If the design includes a fenced area - revenue generation is possible.
- **Revenue:** Somewhat (private/reserved private events)
- **Capacity:** Varies depending on size. 15 square feet per bather.
- **Approximate Days of Use:** 365

# CASE STUDY - WATER FEATURE

## CENTRAL PARK MAPLE GROVE, MN

- Equipment/Features: 49 Jet Sprays And 18 Arching Sprays
- Chlorinated: Fountain water is chlorinated and recycled through a filtration system in the lower level of the community building.
- Surrounding Area: Concrete & Unit Paver Hardscape Patio
- Water Depth: 0" / Spray Only
- Lighting: Led Lights Turn The Fountain Into A Light Show Once The Sun Goes Down
- Targeted Age Group: All Age Groups
- Seasons of Use: Open year-round (water in warmer temps)

**WATER PLAY USER CAPACITY 150**



Project Design By Damon Farber



# CASE STUDY - WATER FEATURE

## WABUN PARK WADING POOL MINNEAPOLIS, MN

- Equipment/Features: Wading Pool With Spraying Rock Structure
- Chlorinated: Fountain water is chlorinated and recycled through a filtration system and the water is reused just like in a swimming pool
- Surrounding Area: Concrete with Furnishings & Umbrellas
- Water Depth: Zero-Depth Entry To 24" Depth @ Deepest
- Fencing: Yes - 42" perimeter fencing per MN wading pool code.
- Targeted Age Group: Tot - 12 Years
- Seasons of Use: Summer Only

WATER PLAY USER CAPACITY 140

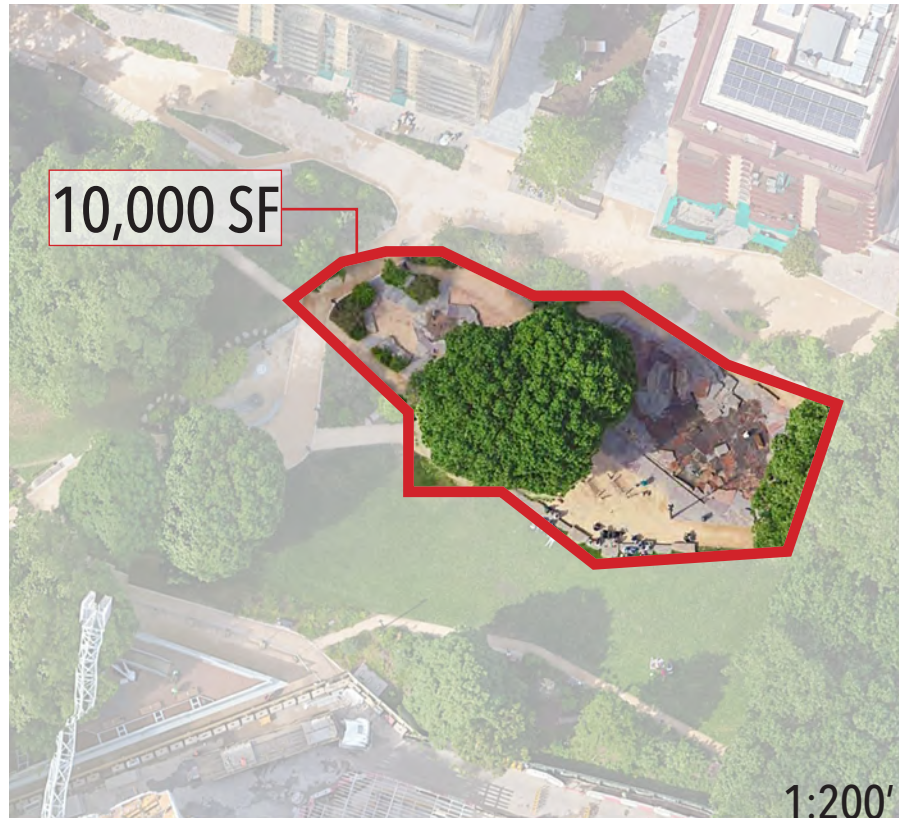


# CASE STUDY - WATER FEATURE

## ELEPHANT PARK LONDON, UK

- Equipment/Features: "Village" Pumps, Jets, Water Cascades, Rock Channels, Babbling Stream, Sand Pits
- Surrounding Area: Sand Play, Lawn, Stone Paving, Landscaping
- Water Depth: Zero-Depth Entry To 3"
- Lighting: Perimeter Post Lights
- Targeted Age Group: Tot - 18 Years
- Seasons of Use: Open year-round (water in warmer temps)

WATER PLAY USER CAPACITY 400



# CASE STUDY - WATER FEATURE

## MADRID RIO PARK MADRID, SPAIN

- Equipment/Features: Splash Pads with Water Jets
- Surrounding Area: Unit Pavers, Lawn, Landscaping
- Water Depth: Zero-Depth Entry To 1"
- Lighting: Park Lamp Posts
- Targeted Age Group: All Ages
- Seasons of Use: Open year-round (water in warmer temps)

WATER PLAY USER CAPACITY 900



# SUMMARY - CASE STUDIES



4,000 SF OF WATER PLAY

## CENTRAL PARK - MAPLE GROVE, MN

- Jet & Arching Spray Pad
- Recycled Water Via Filtration System
- Hardscape Perimeter Patio w/ Seatwalls
- 0" Depth Water - Spray Only
- Integrated LED Fountain Lighting
- No Fencing
- All Age Groups



6,500 SF OF WATER PLAY

## WABUN WADING POOL - MINNEAPOLIS, MN

- Wading Pool With Spraying Rock Structure, Sprayers
- Recycled Water Via Filtration System
- 2 Umbrellas @ Patio
- Zero-Depth Entry To 24" Depth @ Deepest
- 42" Fencing
- Tot - 12 Years Targeted Age Group



10,000 SF OF WATER PLAY

## ELEPHANT PARK - LONDON, UK

- "Village" Pumps, Jets, Water Cascades, Rock Channels, Babbling Stream, Sand Pits
- Chlorinated: Unknown
- Lush Planted Edges
- Zero-Depth Entry To 1"
- Perimeter Post Lights
- Fencing: Unknown
- Tot - 12 Years Targeted Age Group

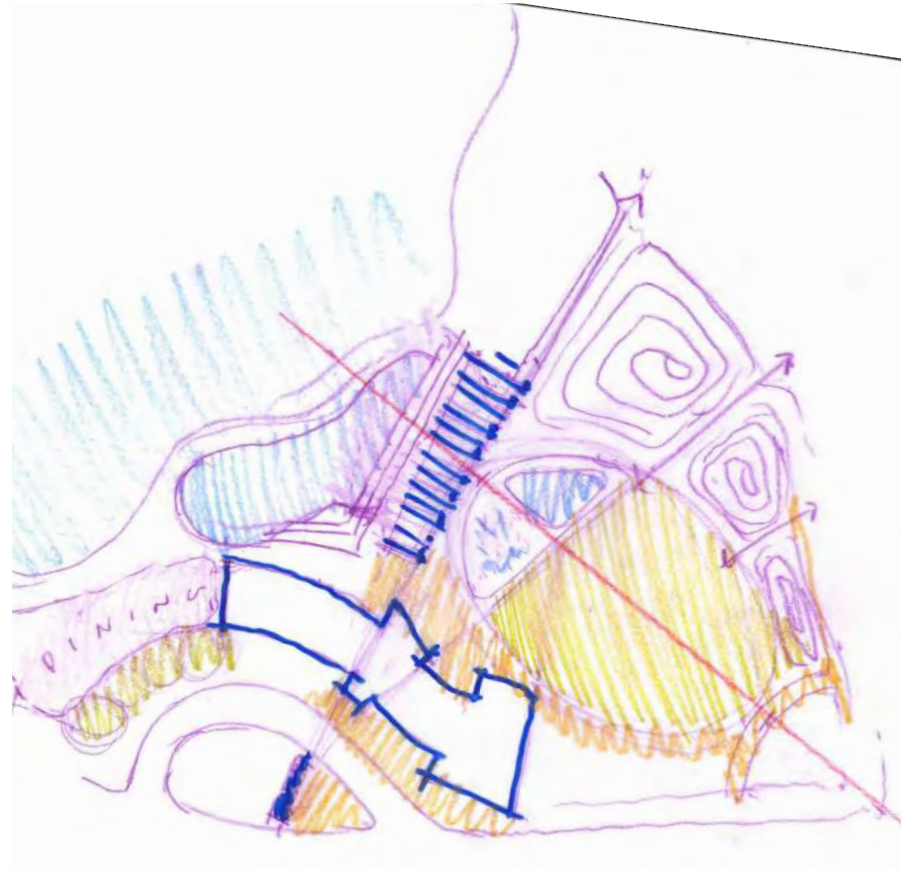


25,500 SF OF WATER PLAY

## MADRID RIO PARK - MADRID, SPAIN

- Wading Pool Series (3), Jets
- Chlorinated: N/A
- Hardscape Perimeter With Grass And Planted Canopy
- Zero-Depth Entry To 24"
- Park Lamp Posts
- No Fencing
- All Age Groups

# PROCESS - CONCEPT DEVELOPMENT



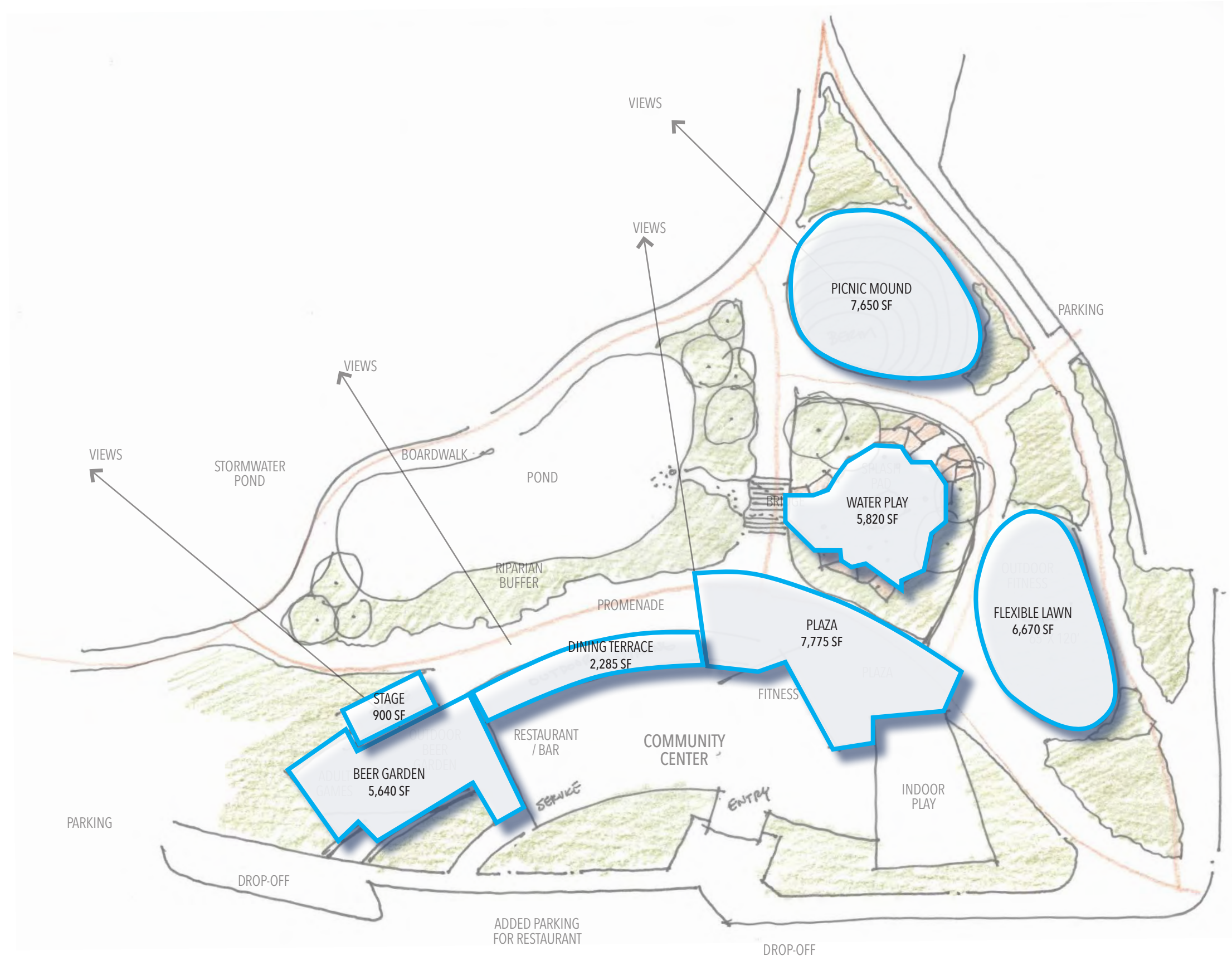


# CONCEPT 1 PROGRAM

## SPACE PROGRAMMING

FLEXIBLE LAWN	6,670 SF
PICNIC MOUND	7,650 SF
WATER PLAY	5,820 SF
PLAZA	7,775 SF
DINING TERRACE	2,285 SF
BEER GARDEN	5,640 SF
STAGE	900 SF

WATER PLAY USER CAPACITY 375



# CONCEPT 1A

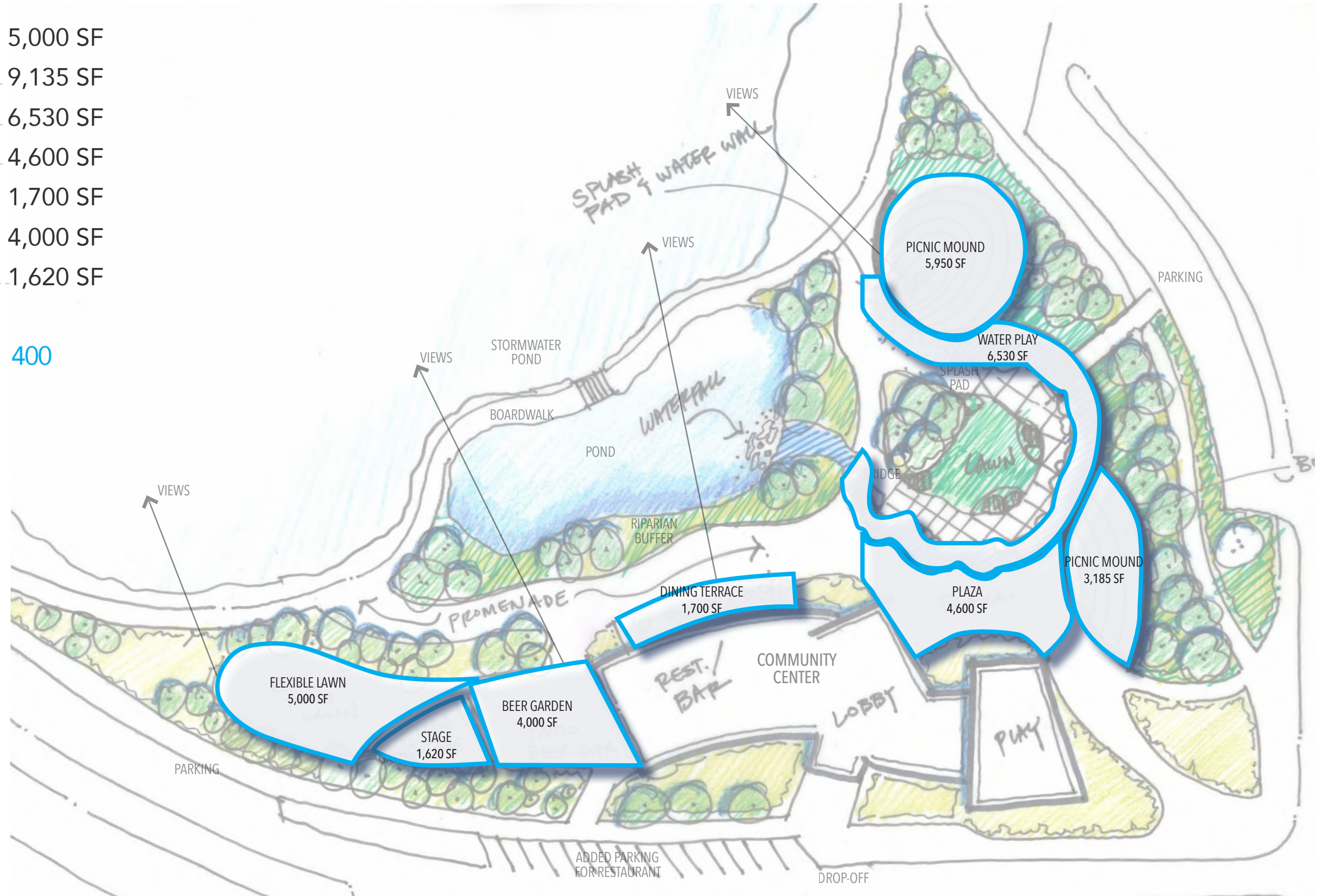


# CONCEPT 1A PROGRAM

## SPACE PROGRAMMING

FLEXIBLE LAWN	5,000 SF
PICNIC MOUND	9,135 SF
WATER PLAY	6,530 SF
PLAZA	4,600 SF
DINING TERRACE	1,700 SF
BEER GARDEN	4,000 SF
STAGE	1,620 SF

WATER PLAY USER CAPACITY 400



# CONCEPT 2



# CONCEPT 2 PROGRAM

## SPACE PROGRAMMING

FLEXIBLE LAWN	9,730 SF
PICNIC MOUND	20,770 SF
WATER PLAY	1,800 SF
PLAZA	9,400 SF
DINING TERRACE	1,265 SF
BEER GARDEN	4,530 SF
STAGE	1,200 SF

WATER PLAY USER CAPACITY 120



# CONCEPT 3

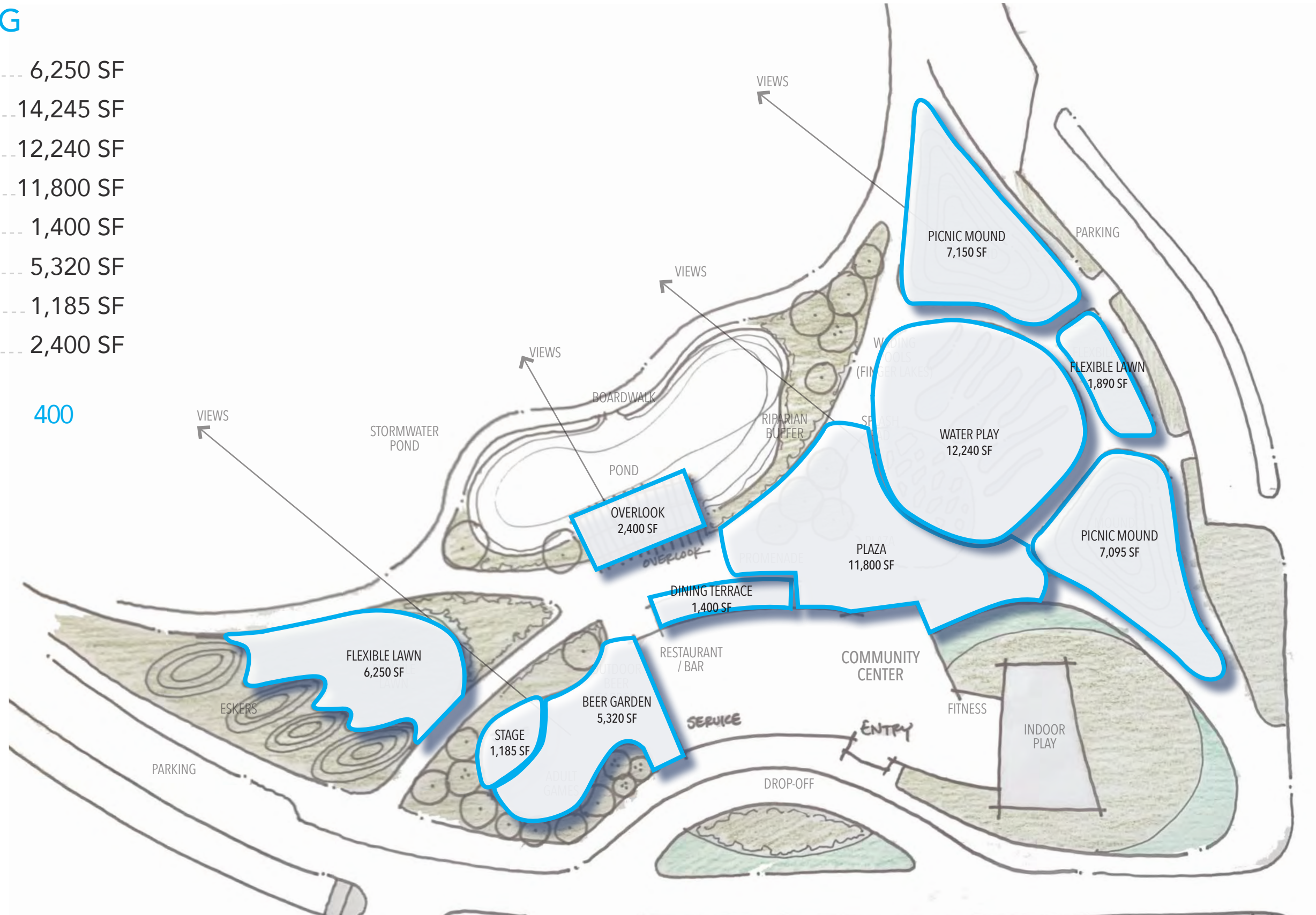


# CONCEPT 3 PROGRAM

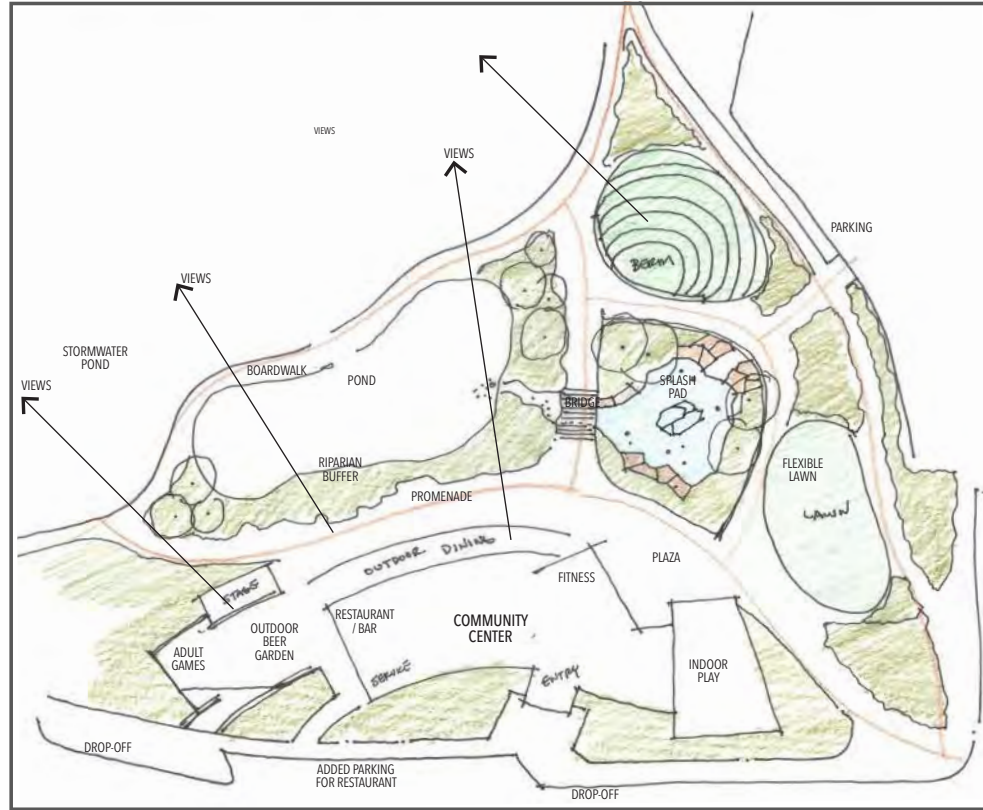
## SPACE PROGRAMMING

FLEXIBLE LAWN	6,250 SF
PICNIC MOUND	14,245 SF
WATER PLAY	12,240 SF
PLAZA	11,800 SF
DINING TERRACE	1,400 SF
BEER GARDEN	5,320 SF
STAGE	1,185 SF
OVERLOOK	2,400 SF

WATER PLAY USER CAPACITY 400



# SUMMARY - PROPOSED CONCEPTS



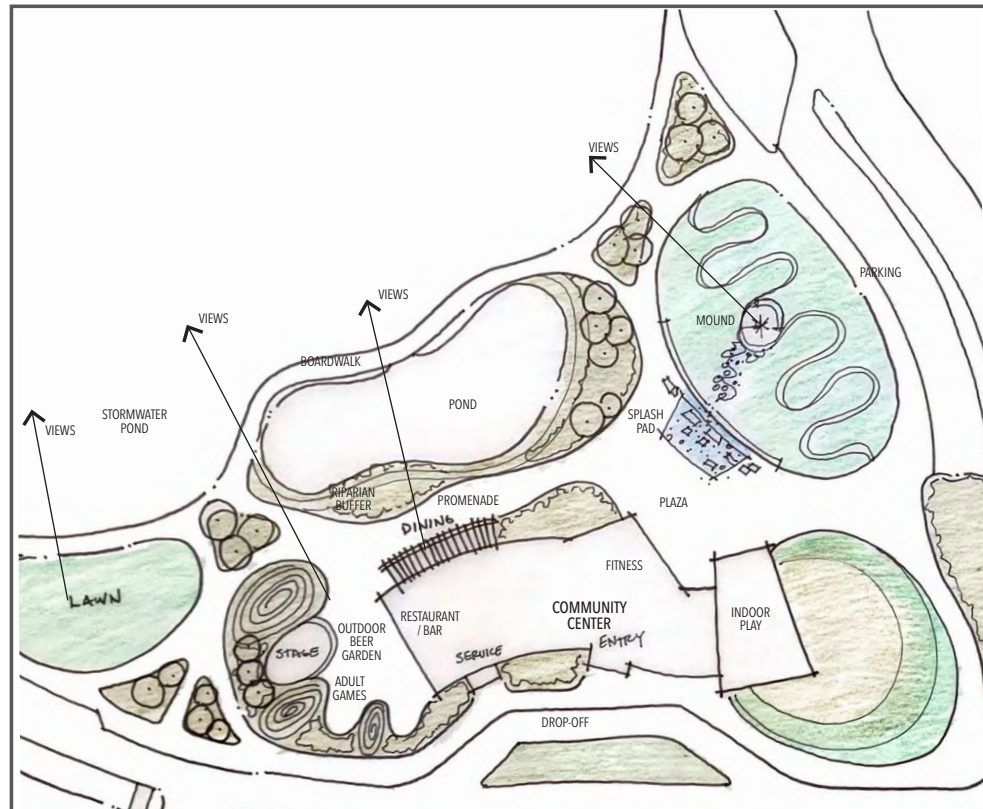
## CONCEPT 1 SPACE PROGRAM

FLEXIBLE LAWN	5,000 SF
PICNIC MOUND	9,135 SF
WATER PLAY	6,530 SF
PLAZA	4,592 SF
DINING TERRACE	1,700 SF
BEER GARDEN	4,000 SF
STAGE	1,620 SF



## CONCEPT 1A SPACE PROGRAM

FLEXIBLE LAWN	6,670 SF
PICNIC MOUND	7,650 SF
WATER PLAY	5,820 SF
PLAZA	7,775 SF
DINING TERRACE	2,285 SF
BEER GARDEN	5,640 SF
STAGE	900 SF



## CONCEPT 2 SPACE PROGRAM

FLEXIBLE LAWN	9,730 SF
PICNIC MOUND	20,770 SF
WATER PLAY	2,000 SF
PLAZA	9,400 SF
DINING TERRACE	1,265 SF
BEER GARDEN	4,530 SF
STAGE	1,200 SF



## CONCEPT 3 SPACE PROGRAM

FLEXIBLE LAWN	6,250 SF
PICNIC MOUND	14,245 SF
WATER PLAY	12,240 SF
PLAZA	11,800 SF
DINING TERRACE	1,400 SF
BEER GARDEN	5,320 SF
STAGE	1,185 SF
OVERLOOK	2,400 SF

# WATER FEATURE COSTS

**Costs for water features vary dramatically and are driven by the following factors:**

- > Size of the Water Feature
- > Equipment and Filtration System
- > Programming & Control Systems
- > Lighting & Sound Systems
- > Construction Materials
- > Amenities
- > Bidding Climate & Number of Bidders

The conceptualized water features included in this presentation have an estimated probable cost of \$1m to \$3m.

- *Performance Indicator:* Reduce blighted properties along Hwy 10
- *Completion Timeframe:* Q4 2025
- **Objective 3:** Rehabilitate Historic Townhall
  - *Responsible Parties:* Economic Development (Sullivan, Hanson)
  - *Key Areas:* Historic Townhall
    - *Action 2.1:* Complete preliminary design of rehabilitation improvements
    - *Action 2.2:* Apply for large grant opportunity
    - *Action 2.3:* Apply for small grant opportunities if needed
    - *Action 2.4:* Identify user/renter
  - *Performance Indicator:* Acquire grant funds to fund remaining allowed construction costs
  - *Completion Timeframe:* Q1 2026

### **Strategy 5. Improve the safety and mobility of transportation corridors**

- **Objective 1:** Improve street lighting and pedestrian facilities
  - *Responsible Parties:* Engineering, Public Works (Westby)
  - *Key Areas:* Existing and future roadways and pedestrian facilities
    - *Action 1.1:* Evaluate and construct street lighting improvements
    - *Action 1.2:* Evaluate and construct pedestrian trail safety improvements
  - *Performance Indicator:* Reduction in reported safety concerns
  - *Completion Timeframe:* Ongoing

### **Strategy 6. Connect the community through parks, trails and recreational programming**

- **Objective 1:** Construct Phase 1 of The Waterfront Park
  - *Responsible Parties:* Parks Division (Riverblood)
  - *Key Areas:* COR Community Park and Downtown Destination
    - *Action 1.1:* Approve schematic design work of water play area and future community building June 10, 2025
    - *Action 1.2:* Authorize preparation of plans/specs August 12, 2025
      - Review comparative case studies of comparable community buildings/parks
      - Review comprehensive proforma of The Waterfront Park (revenue/O&M costs)
      - Identify funding and community benefits
      - Approve schematic design and phasing plan
    - *Action 1.3:* Approve plans/specs and authorize bids September 2025 (3 month process)
    - *Action 1.4:* Award contract January 2026
  - *Performance Indicator:* Water play open July 1, 2026
- *Completion Timeframe:* Phase 1 completed Q2 2026

- **Objective 2:** Develop and commit to a final plan for The Waterfront Park
  - *Responsible Parties:* Parks Division (Riverblood)
  - *Key Areas:* COR Community Park and Downtown Destination
    - *Action 2.1:* This objective runs in conjunction with Strategy 6, Objective 1, Action items 1.1 and 1.2.
    - *Action 1.2:* Establish future community building amenities
    - *Action 1.3:* Establish phasing plan for completing the Waterfront Park
    - *Action 1.4:* Authorize preparation of plans/specs for community building – date TBD
    - *Action 1.5:* Approve plans/specs and authorize bids for awarding a construction contract – date TBD
  - *Performance Indicator:* Approved schematic design for entire Waterfront Park and phasing plan.
  - *Completion Timeframe:* Q3 2025

### **Strategy 7. Strengthen and enhance our identity, brand and image**

- **Objective 1:** Secure Ramsey Zip Code
  - *Responsible Parties:* Administration (Hagen)
  - *Key Areas:*
    - *Action 1.1:* Identify key personnel at USPS to discuss obtaining a unique zip code
    - *Action 1.2:* Identify other influential parties to support Ramsey’s efforts
    - *Action 1.3:* Host critical meetings to develop the timing and formal application procedure to prevent an immature application from occurring
  - *Performance Indicator:* Known metrics are understood on what USPS uses when considering a new zip code.
  - *Completion Timeframe:* Formal request may be submitted to district manager in 2026
- **Objective 2:** Enhance City brand
  - *Responsible Parties:* Communications (Johnson)
  - *Key Areas:* Branding and communications strategy
    - *Action 2.1:* Create City Moto
    - *Action 2.2:* Create Branding Guide for staff to use with templates and logos
  - *Performance Indicator:*
  - *Completion Timeframe:* Q1 2026

### **Strategy 8. Enhance City’s communication through transparency and accountability**

- **Objective 1:** Identify and advertise a cost savings measure
  - *Responsible Parties:* Administration (Hagen)
  - *Key Areas:* All city operations
    - *Action 1.1:* Advertise through newsletter or social media an area of improvement that decreased cost through direct savings or improved efficiency.
  - *Performance Indicator:* Public engagement reaction to the advertised measure

**Park and Recreation Commission****Meeting Date:** 06/12/2025**Primary Strategic Plan Initiative:****Information****Title:**

May Recreation Program Update

**Purpose/Background:**

Parks and Recreation had a busy May with lots of fun including a Ribbon Cutting <<https://www.facebook.com/ramsey.cityof/posts/pfbid0bn8wXSH4DqBLewFrVL9Ck6n8Ys7IMU5x8XLfSVLaxRSKtAJuoZ2yJPhQKBUJE4nI>> for the new Central Park playground, Dash and Dine 5k <<https://www.facebook.com/ramsey.cityof/posts/pfbid0kRdXN629J6MC1xP3hUngih1oSWhkBFJeJ1vwfSFgoJ5qbRKU1mvwz2UdeLJ4AnAdI>>, Tree Planting <<https://www.facebook.com/ramsey.cityof/posts/pfbid0fP8uaxVaAwvgKEhGoMCRoXqnPoANJIT4ofXFI1ZT3FaR45xIDPUQ9adnVW4vgil>>, and so much more! We are so excited to kick off the summer this with more fun to come.

**Upcoming Programs, Registration Deadlines, and New Releases:****Wednesday Evening Yoga** <<https://secure.rec1.com/MN/ramsey-mn/catalog/index/da1b8d3bf882e0bcac04b1ee28d7ea46?filter=c2VhcmNoPXlvZ2E=>>>

Weekly Yoga is back! After a long pause we are excited to bring back Wednesday evening yoga at Central Park.

- \* Dates: Wednesdays, from 6:00 – 7:00 p.m. at Central Park
- \* Cost: \$5/session
- \* Registration: Pre-register prior to arrival at the class. Walk-ins taken on a first come first serve basis.

**Sports Discovery** <<https://secure.rec1.com/MN/ramsey-mn/catalog/index/8353f198026dcb499bd97dac305b96a7?filter=c2VhcmNoPXNwb3J0cyUyMGRpc2NvdMvYeQ=>>>

Discover Your Child's Passion for Sports! This weekly introductory program is perfect for kids ages 3-9 who want to explore three of today's most popular sports: soccer, baseball, and flag football. The four sessions are designed to help kids familiarize themselves with these sports, the program provides an opportunity to learn new skills, discover their favorites, and understand the importance of sportsmanship.

- \* Dates: Tuesdays, June 10 – July 1 at Central Park
- \* Age Time
- 3 to 4 5:00 – 6:00 p.m.
- 5 to 6 6:15 – 7:15 p.m.
- 7 to 9 7:30 – 8:30 p.m.
- \* Cost: \$85/child, includes t-shirt
- \* Registration: Pre-registration is required.

**Community Concert with the North Suburban Concert****Band** <<https://secure.rec1.com/MN/ramsey-mn/catalog/index/7abff3d1f4591920e1d0206a7c01a535?filter=c2VhcmNoPW5vcnRoJTlwc3Vi>>

Join us at Central Park for a free, family-friendly concert featuring the North Suburban Concert Band (NSCB), a community ensemble with over 40 years of experience playing a diverse mix of movie tunes, rock hits, marches, and more. Bring your chair or blanket and enjoy music in the park with treats available for purchase from the Two Scoops truck!

- \* Dates: Monday, June 16, 7 – 8 p.m. at Central Park
- \* Cost: Free to attend

**Concert Series** <<https://secure.rec1.com/MN/ramsey-mn/catalog/index/7abff3d1f4591920e1d0206a7c01a535?filter=c2VhcmNoPWNvbmNlcnQIMjBzZXJpZXM=>>>

The outdoor concerts are a family-friendly event series accompanied by supplemental programs such as Art in the Park and conclude with the Trott Brook Benefit Bash.

- \* Dates: Thursdays, June 12 -- Aug. 21, 6:30 – 8 p.m. at The Draw
- \* Cost: Free to attend
- \* View the full lineup online here <<https://www.ci.ramsey.mn.us/278/The-Draw-Summer-Concert-Series>>

**Art in the Park** <<https://app.getoccasion.com/p/n/F96qWbsw>>

Art in the Park with the Rumriver Art Center takes place Thursdays in conjunction with the Concert Series. This year's theme is Art Around the World!

- \* Dates: Thursdays, June 12 -- Aug. 14, 6:00 – 7:00 p.m. at The Draw
- \* No session on July 3
- \* Cost: \$5/person
- \* Registration: Pre-registration is required. Register online with the Rumriver Art Center here <<https://app.getoccasion.com/p/n/F96qWbsw>>.
- \* Ages: 5-15

**Intro to Pickleball** <<https://secure.rec1.com/MN/ramsey-mn/catalog/index/8353f198026dcb499bd97dac305b96a7?filter=c2VhcmNoPWludHJvJTlwdG8IMjBwaWNRbGVlYWxs=>>>

Learn the basics of pickleball with certified instructor Gwen Radel from Nitty Gritty Pickleball! This fun, two-hour beginner class covers rules, scoring, terminology, fundamentals, and court positioning—paddles and balls provided. These classes fill fast! Please only register for one Intro to Pickleball session, all classes cover the same materials. Classes take place at the Central Park courts.

- \* Dates:
- \* Day Date Time
- Sa. June 14 9 – 11 a.m.
- Su. July 27 1 – 3 p.m.
- \* Cost: \$15/person
- \* Registration: Pre-registration is required, space is limited.
- \* Ages: 10+

**Pickleball Leagues** <<https://secure.rec1.com/MN/ramsey-mn/catalog/index/7462dc03dbb468fb1d1bcab9bed205d2?filter=c2VhcmNoPXBoY2tsZWJhbGw=>>>

Our first league of the season started on April 30 and will run through July 2! Ramsey Parks and Recreation is partnering with Minnesota Pickleball to offer structured ladder leagues where players compete individually, rotate partners each session, and move up or down based on performance, with results posted weekly. Leagues will take place at the Central Park courts.

- \* Sessions
  - \* Sunday Evening <<https://swishtournaments.com/product/ramsey-sunday-pickleball-ladder-league-530pm/>>
  - \* June 15- August 31, 5:30-8:30 p.m.
  - \* Wednesday Evening Late Season <<https://swishtournaments.com/product/ramsey-wednesday-pickleball-ladder-league-530pm-2/>>
  - \* July 16-Sept. 17, 5:30-6:30 p.m.
- \* Cost: \$65/person
- \* Registration: Pre-registration is required, space is limited.

**Time2Play** <<https://secure.rec1.com/MN/ramsey-mn/catalog/index/7462dc03dbb468fb1d1bcab9bed205d2?filter=c2VhcmNoPXBhcmVudA==>>>

Play is fundamental to a child’s healthy development and community gives children a feeling of belonging and safety. Time2Play with Northgate Church combines the two by providing a weekly destination for fun! Bring your kids and their friends and join us for games, sports, crafts and snacks.

- \* Dates: Tuesdays, June 17 – Aug. 19 10:00 – 11:30 a.m. at the ballfields at The Draw
- \* No session on July 1
- \* Cost: Free to attend
- \* Registration: Pre-registration is encouraged if you would like to receive event reminders or notifications of any weather related changes.
- \* Although this event is partnered with a church, this is not a religious activity or “church event.” Northgate Church wishes to provide services to the community with kids and families in mind, regardless of belief.

**Parks and Recreation Field Trip at Jam**

**Hops** <<https://secure.rec1.com/MN/ramsey-mn/catalog/index/7abff3d1f4591920e1d0206a7c01a535?filter=c2VhcmNoPWphbSUyMGhvcA==>>>

We’re heading to the brand-new Jam Hops gym—and you’re invited! This open gym-style field trip is designed for kids to jump, tumble, and explore in a fun, energetic environment.

- \* Date: Wednesday, June 25, 9:30 – 10:30 a.m. at the new Jam Hops Ramsey location
- \* Cost: \$5/kid
- \* Registration: Pre-register is required, space is limited to 20.

**NW Food Truck Fest in Ramsey** <<https://secure.rec1.com/MN/ramsey-mn/catalog/index/7abff3d1f4591920e1d0206a7c01a535?filter=c2VhcmNoPWZvb2QIMiB0cnVjYUyMGZlc3Q=>>>

Ramsey Parks and Recreation is excited to partner with NW Food Truck Fests to host a Food Truck Fest in Ramsey! We’ll have local vendors, live music, games, and more! View a lineup of trucks on the Facebook Event here <[https://www.facebook.com/events/600085529620906?active\\_tab=about](https://www.facebook.com/events/600085529620906?active_tab=about)>.

- \* Date: Sunday, June 29, 11:00 a.m. – 5:00 p.m. at Central Park
- \* Cost: Free to attend

**Two Rivers Art Fair** <<https://www.ci.ramsey.mn.us/329/Two-Rivers-Art-Fair>>

Save the date for the Two Rivers Art Fair for its second year at The Draw!

- \* Date: Saturday, July 19, 10:00 a.m. – 4:00 p.m.
- \* Cost: Free to attend
- \* Registration: Now accepting artist registrations! Fee is \$40 for a 10x10 booth, youth receive a discounted booth at \$25.
- \* Registration is filling fast! Approximately 30 spaces remain as of June 2.
- \* Volunteer: We can’t run this event without the help of our wonderful volunteers! Two and three hour shifts are available here. <[https://www.signupgenius.com/go/10C0845AFAA23A0FFC70-49276048-summer#](https://www.signupgenius.com/go/10C0845AFAA23A0FFC70-49276048-summer#/)>

**55+ Day Trip: Munsinger Gardens** <<https://secure.rec1.com/MN/ramsey-mn/catalog/index/fe6923075829b004c7a1e49d15b75738?filter=c2VhcmNoPWRheSUyMHRvaXA=>>>

Experience a delightful day in St. Cloud exploring gardens, dining, and history! Begin with a visit to the Munsinger and Clemens Gardens nestled along the Mississippi River shores. These nationally renowned gardens attract visitors from all over the world. Following the garden visit, fill up with a delicious lunch at Coyote Moon Grille before heading to the Stearns County History Museum for a guided tour.

- \* Date: Wednesday, July 23
- \* Cost: \$92/person. Includes roundtrip transportation on a coach bus, lunch, and entry to all locations. Bus picks up and drops off at City Hall.
- \* Registration: Registration is open until June 22 or until full. No refunds or registrations can be taken after this date.

**Recommendation:**

n/a

**Outcome/Action:**

n/a

**Attachments**

*No file(s) attached.*

**Form Review**

Inbox	Reviewed By	Date
Mariah Albrecht	Mariah Albrecht	06/06/2025 11:42 AM
Mark Riverblood		06/06/2025 12:35 PM
Brian Hagen	Mariah Albrecht	06/06/2025 12:39 PM
Form Started By: Abby Proulx		Started On: 06/05/2025 04:12 PM
Final Approval Date: 06/06/2025		