

# THE WATERFRONT

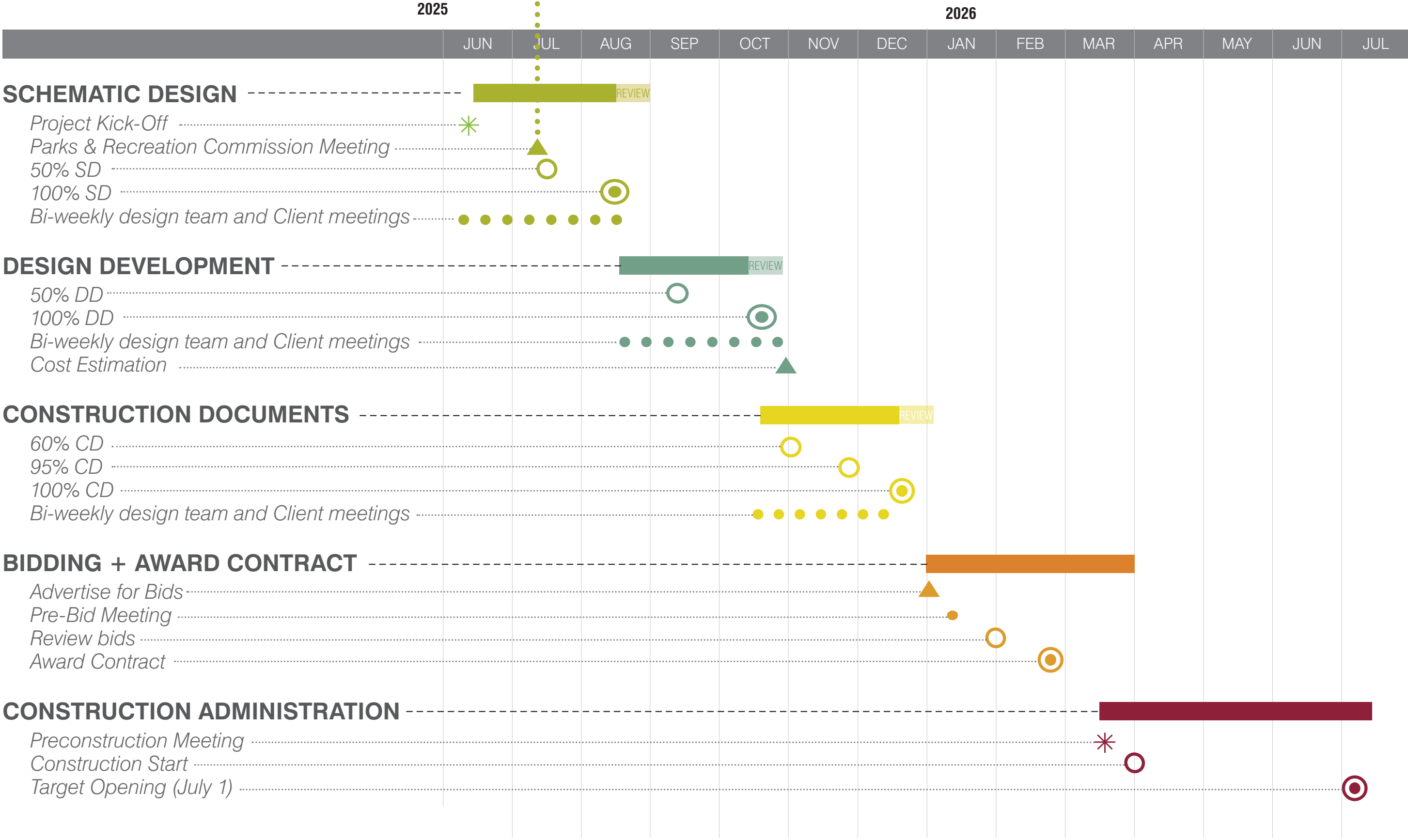
RAMSEY, MN  
JULY 10, 2025

DF/ DAMON FARBER

PARKS COMMISSION UPDATE

# SCHEDULE

**WE ARE HERE**



# PROJECT STATUS UPDATE

## CONSTRUCTION BUDGET

- \$3 Million

## PROJECT SCOPE

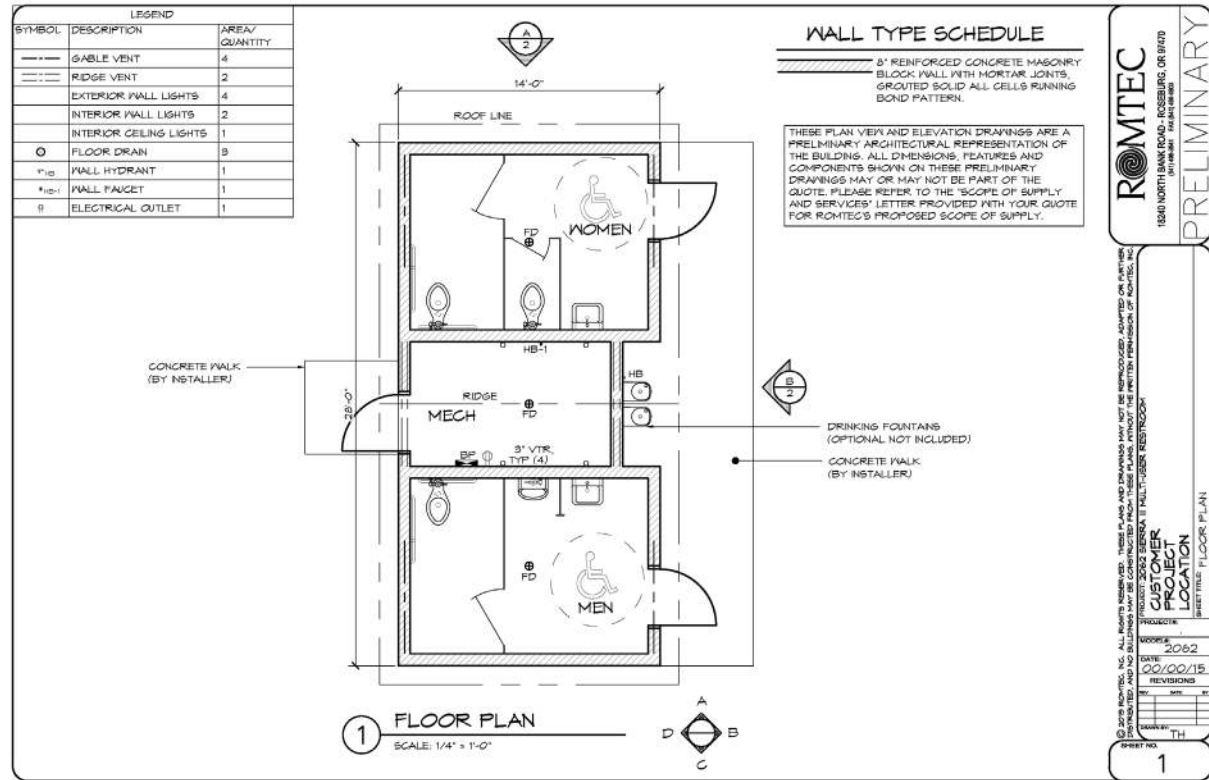
- 12,500 Sq Foot Water Play Space
- Surrounding Park Context: Including Walkways, Landscaping, Seating, Lighting, Fencing, Etc.
- Shaded Pavilion/Pergola Space(S) For Group Rental
- Dozens Of Jets To Accommodate Water Play For 400+ Children
- Run-Through System (Not Recirculated Water)
- Vault For Mechanicals – (In Earthen Berm With Man Door Preferred Or Below Ground With Hatch)
- Site Lighting
- Led Lighting In Water Jets
- Power Supply To Site, Mechanical Vault, Site Lighting
- Dedicated Restrooms (not in current scope but newly required by MDH)

# WHAT WE'VE HEARD

## Design Drivers

- Develop project that can seamlessly connect to future community building
- Develop a design visible from the street intersection
- Design a pass-through aquatic engineered system
- Provide “architectural water play” in lieu of playground appearance splash pad
- Provide continuous opportunity to engage with the water as it flows to the forebay
- Include reservable/rentable pavilion spaces for revenue generation
- Maintain views to lake while providing sense of intimacy and addressing exposure to wind
- New MDH rules necessitate restrooms and showers

# PREFABRICATED FACILITIES



# CUSTOM DESIGNED FACILITIES



## SUMMARY

**MDH Shower Requirements – Splash Pad**  
[Minnesota Health Code Requirements (Minn. R. ch. 4717.3650)]

- **Legal Minimum:**
  - Showers Now Required For Splash Pads
  - Pending Rule Change By Minnesota Department Of Health.

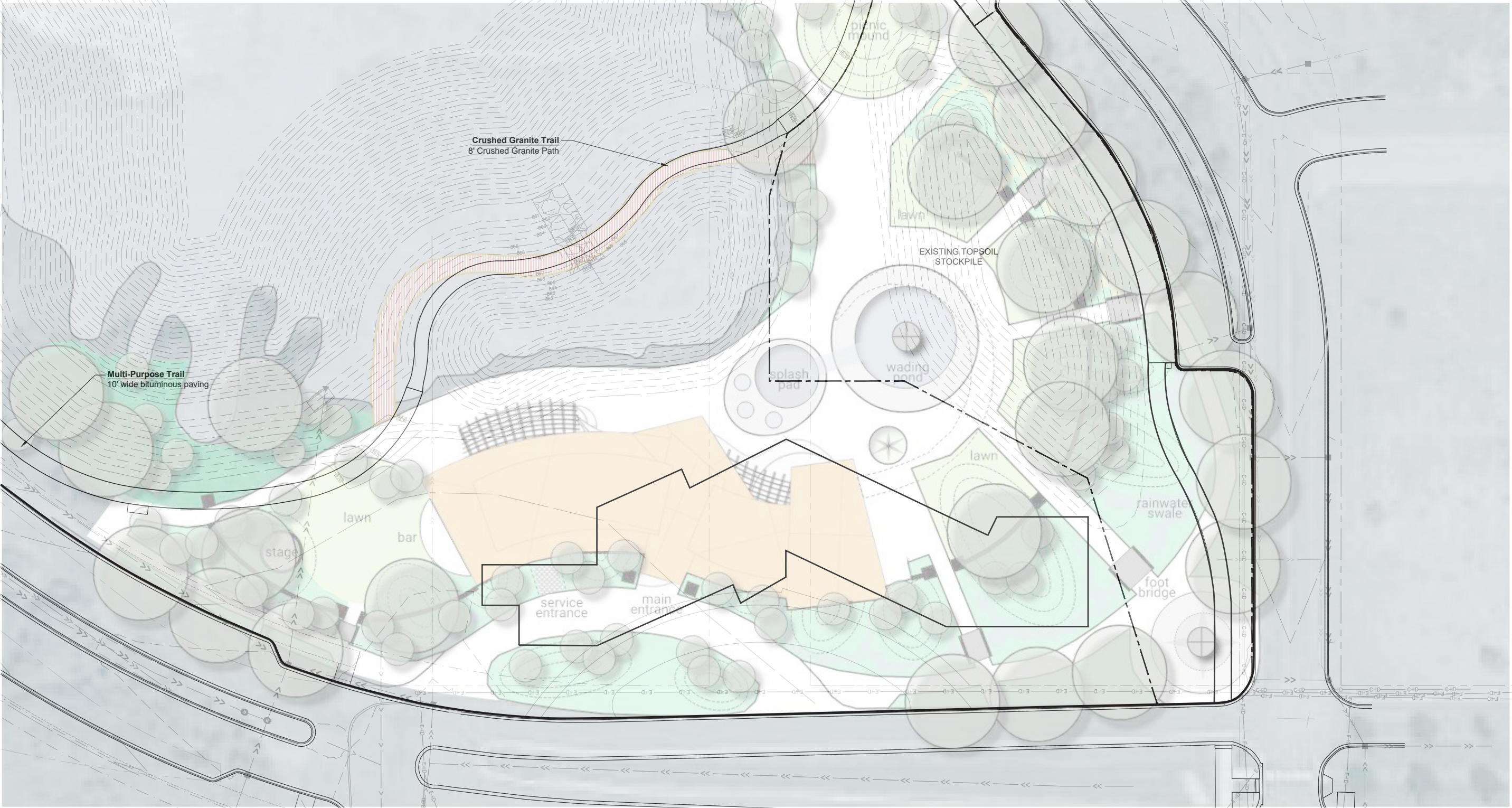
# PROJECT PRECEDENTS



# PROJECT PRECEDENTS

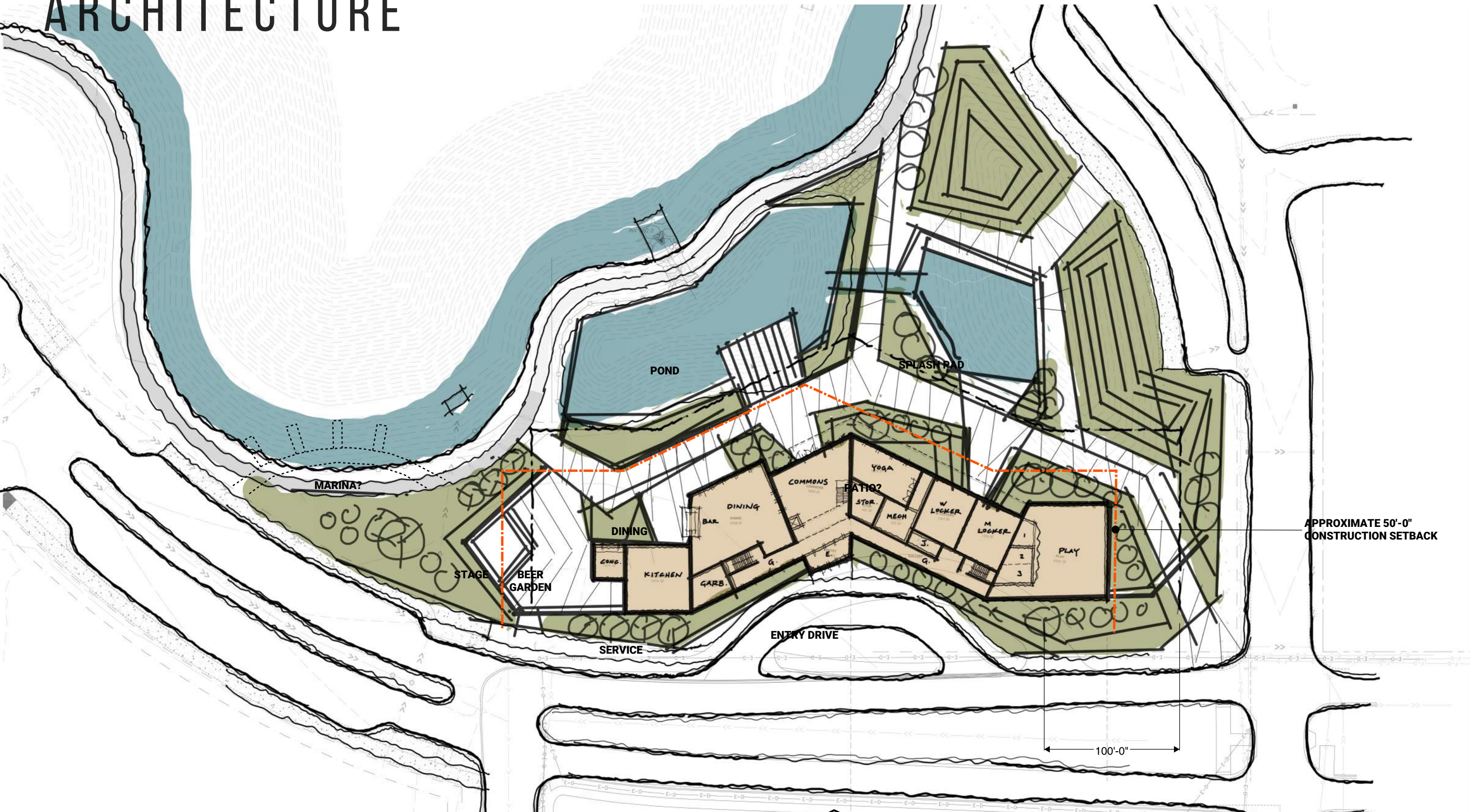


# EARLY CONCEPT

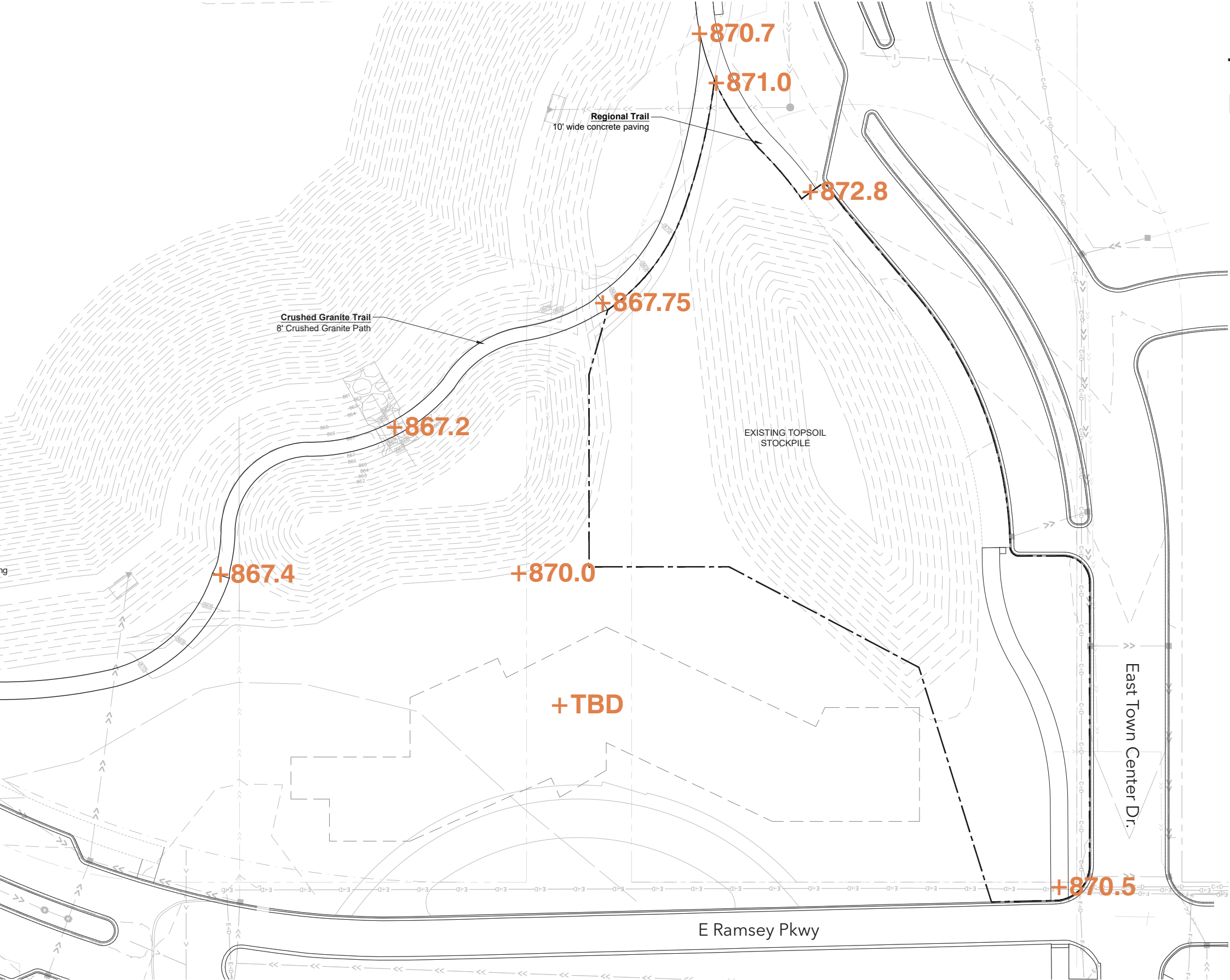


Ramsey Waterfront Community Building  
Landscape

# ARCHITECTURE



# SITE GRADING + TOPOGRAPHY



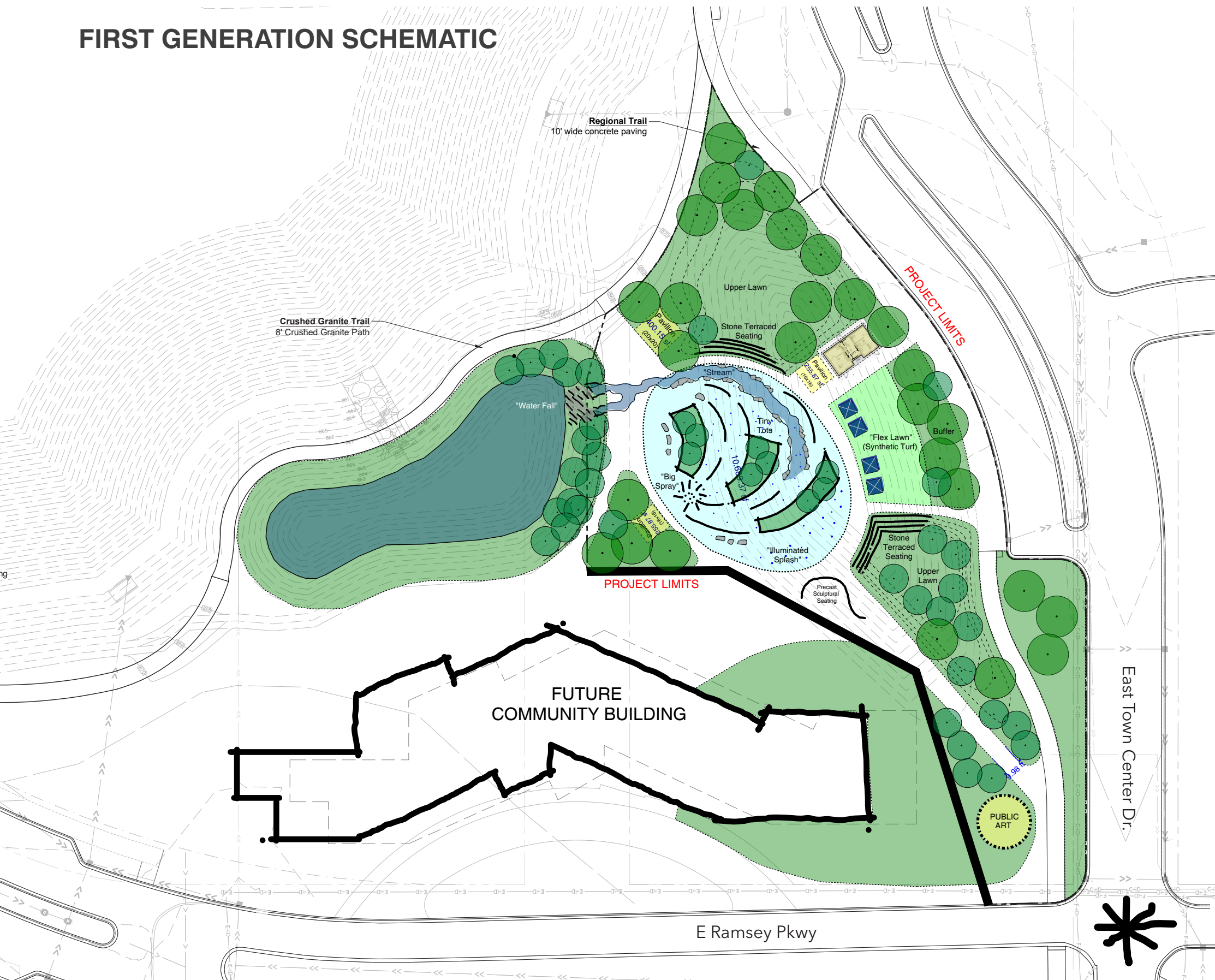
## SUMMARY

### NEEDING ADDITIONAL AS-BUILT DATA:

- Seeking as-built for Ramsey Parkway from City of Ramsey
- Need as-builts or updated survey to determine floor elevation of the future building

# SCHEMATIC DESIGN - THE WAVE

## FIRST GENERATION SCHEMATIC



## SUMMARY

### TOTAL WATER PLAY SF:

- 10,000 SF

### FEATURES:

- Stream
- Mister Fountains
- Stone Terraced Seating
- Illuminated Splash
- (4) 8' x 8' Umbrellas
- Precast Sculptural Seating
- Synthetic Turf "Flex Lawn"
- Public Art at Road Intersection

### WATER PLAY ZONES:

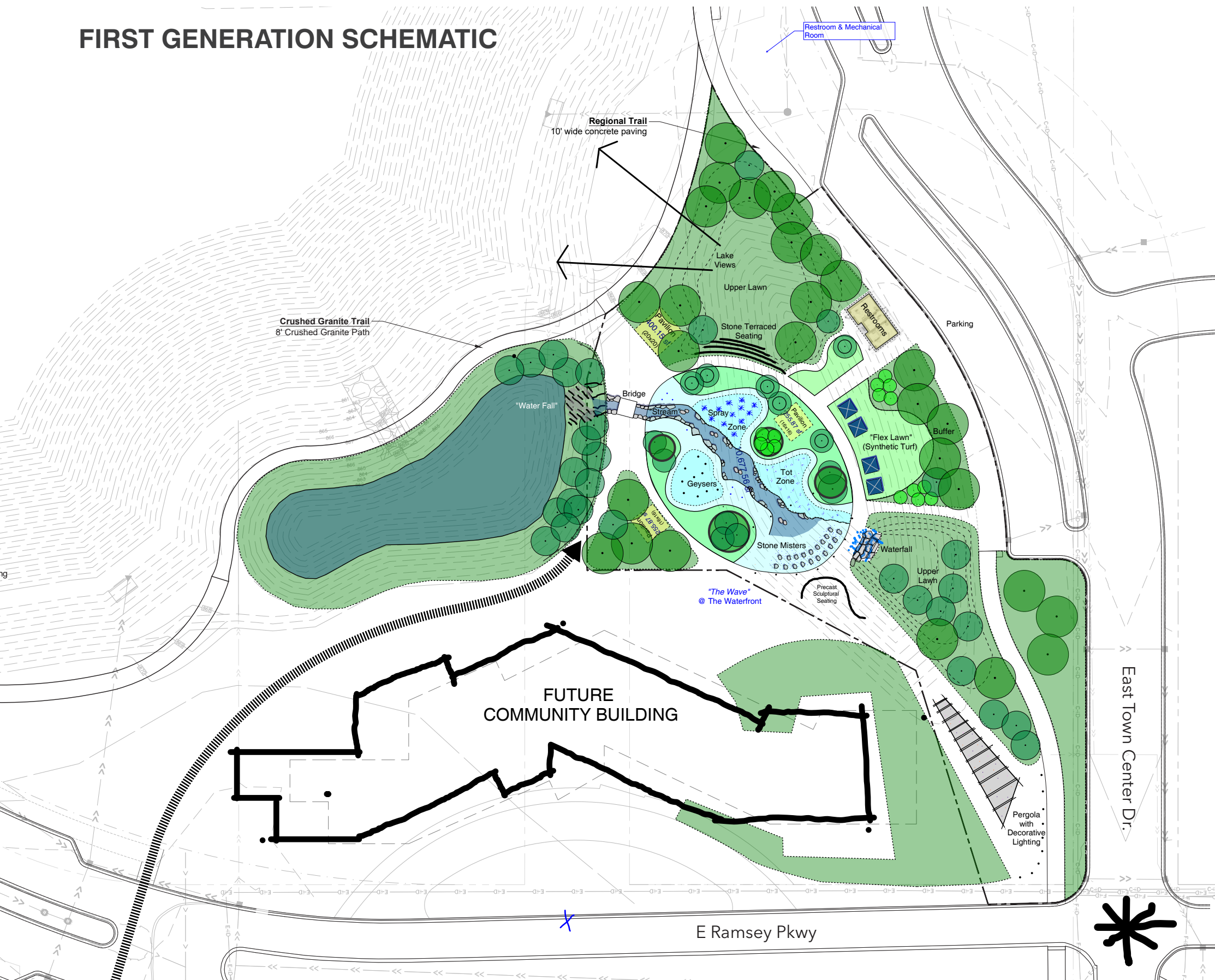
- 4 Zones (Stream, Tots Zone, Big Spray, Illuminated Splash)
- Actuator Controls

### PAVILIONS:

- (1) - 20' x 20' Pavilion 400 sf
- (2) - 16' x 16' Pavilion 256 sf

# SCHEMATIC DESIGN - THE CURRENT

## FIRST GENERATION SCHEMATIC



## SUMMARY

### TOTAL WATER PLAY SF:

- 11,000 SF

### FEATURES:

- Central Stream
- Integrated Synthetic Lawn + Splash Play
- 9' Waterfall
- Integrated Stone Seating / Planters in Splay Play Zone
- Illuminated Splash
- (4) 8' x 8' Umbrellas
- Precast Sculptural Seating
- Stone Terraced Seating
- Synthetic Turf "Flex Lawn"
- Public Art at Road Intersection

### WATER PLAY ZONES:

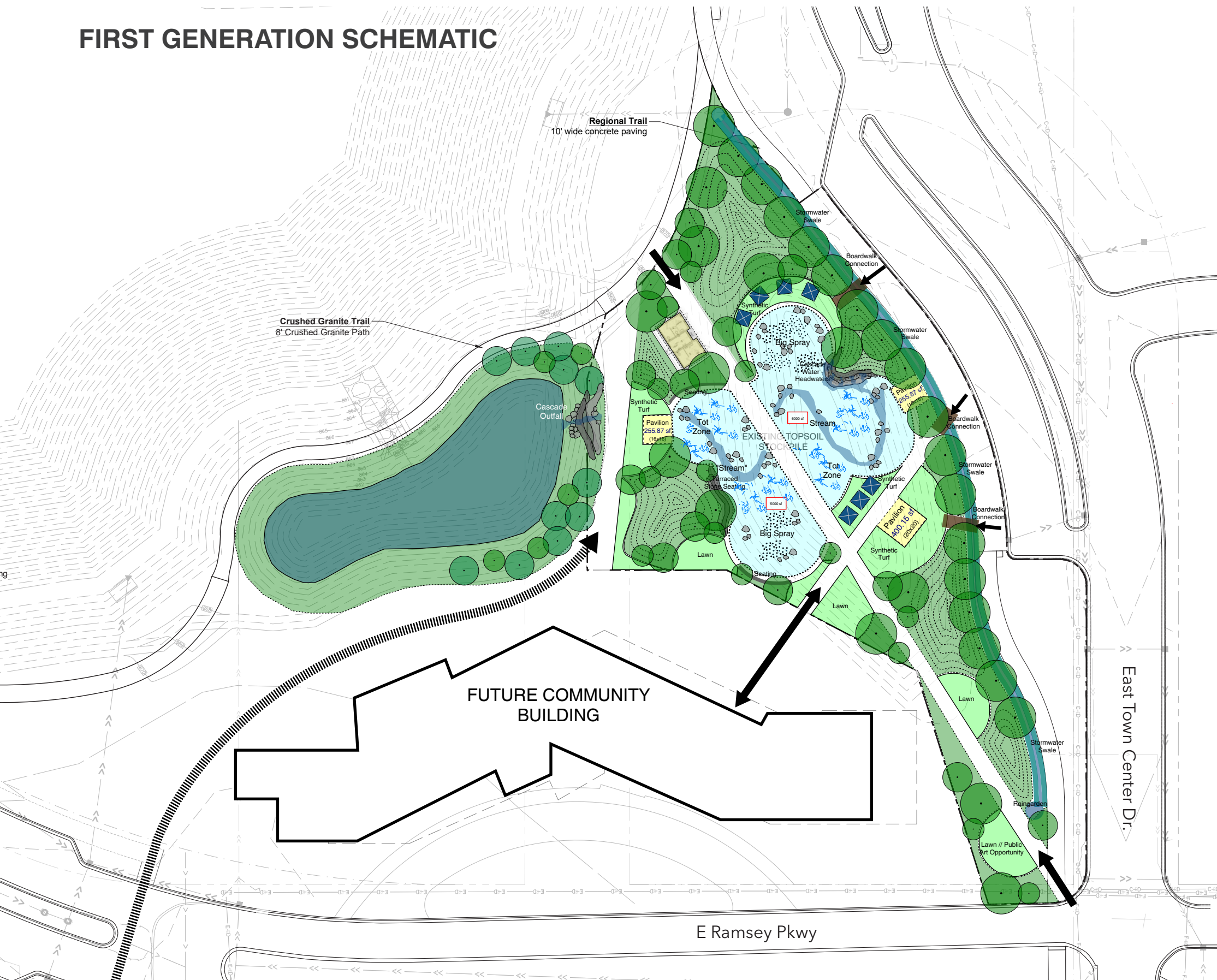
- 4 Zones (Stream, Tots Zone, Big Spray, Waterfall)
- Actuator Controls

### PAVILIONS:

- (1) - 20'x 20' Pavilion 400 sf
- (2) - 16'x 16' Pavilion 256 sf

# SCHEMATIC DESIGN - THE BLUFFS

## FIRST GENERATION SCHEMATIC



## SUMMARY

### TOTAL WATER PLAY SF:

- 11,000 SF

### FEATURES:

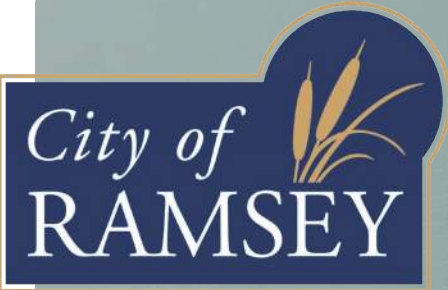
- Winding Stream
- Stone Cascade / Waterfall Headwaters
- Sculptural Boulder Play
- Stone Terrace Seating
- (7) 8' x 8' Umbrellas
- Stone Block Perimeter Seating
- Stone Terraced Seating
- Synthetic Turf "Flex Lawn" at 2 Pavilions
- Boardwalk Connection Over Stormwater Planting/Swale
- Public Art at Road Intersection

### WATER PLAY ZONES:

- 4 Zones (Stream, Tots Zone, Big Spray, Headwaters Cascade)
- Actuator Controls

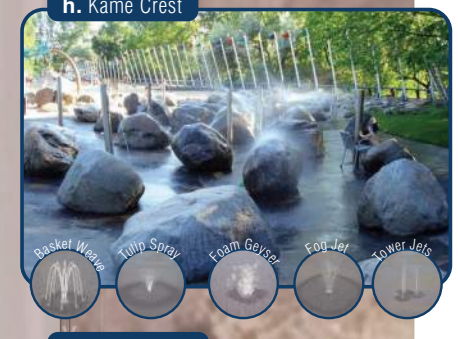
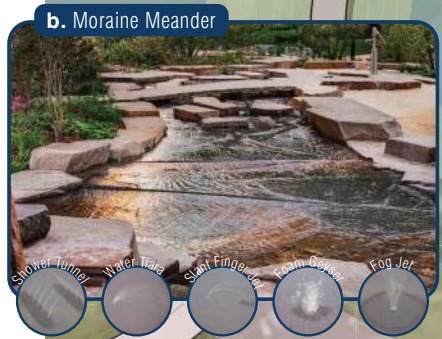
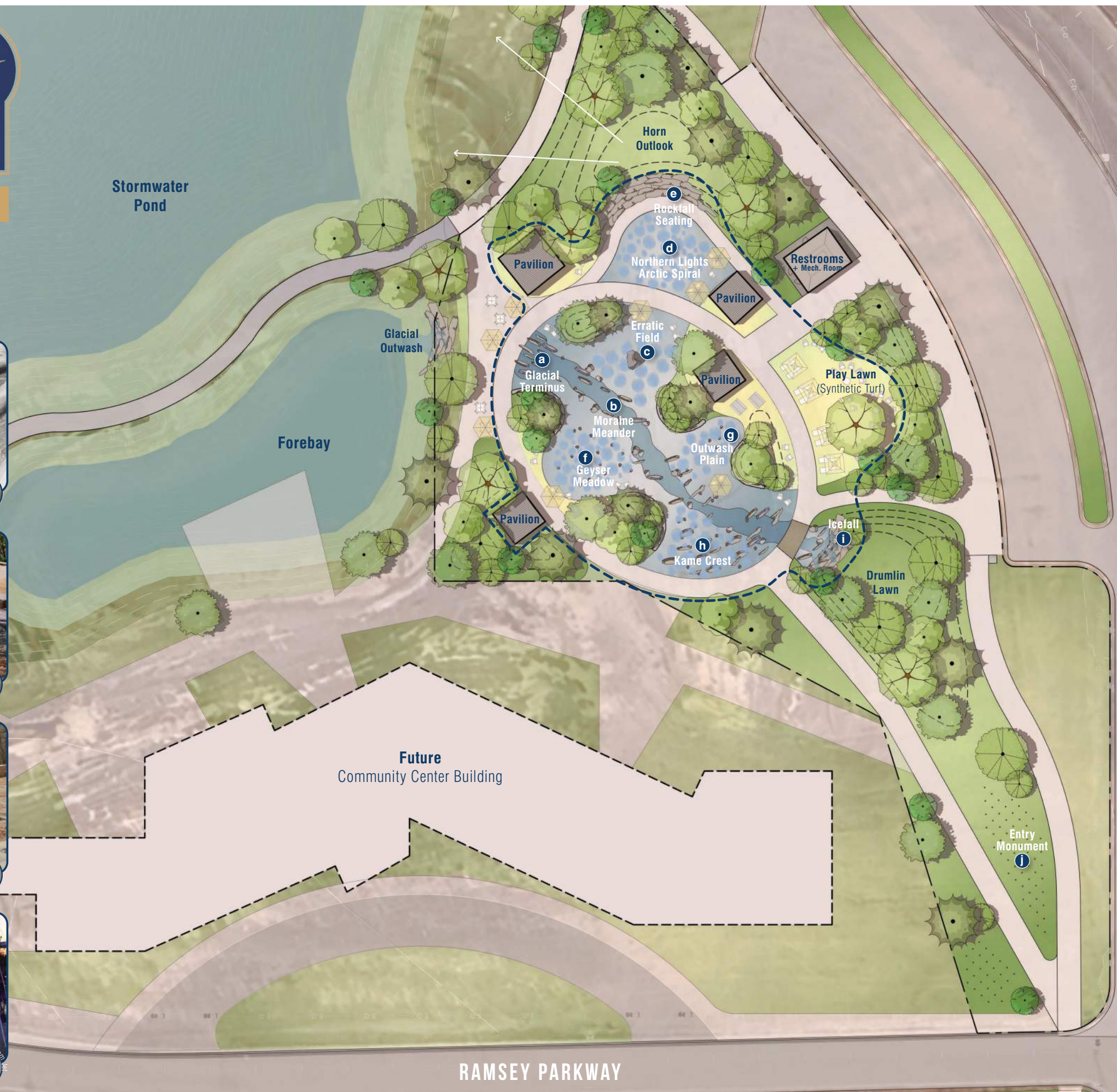
### PAVILIONS:

- (1) - 20'x 20' Pavilion 400 sf
- (2) - 16'x 16' Pavilion 256 sf



# THE WATERFRONT

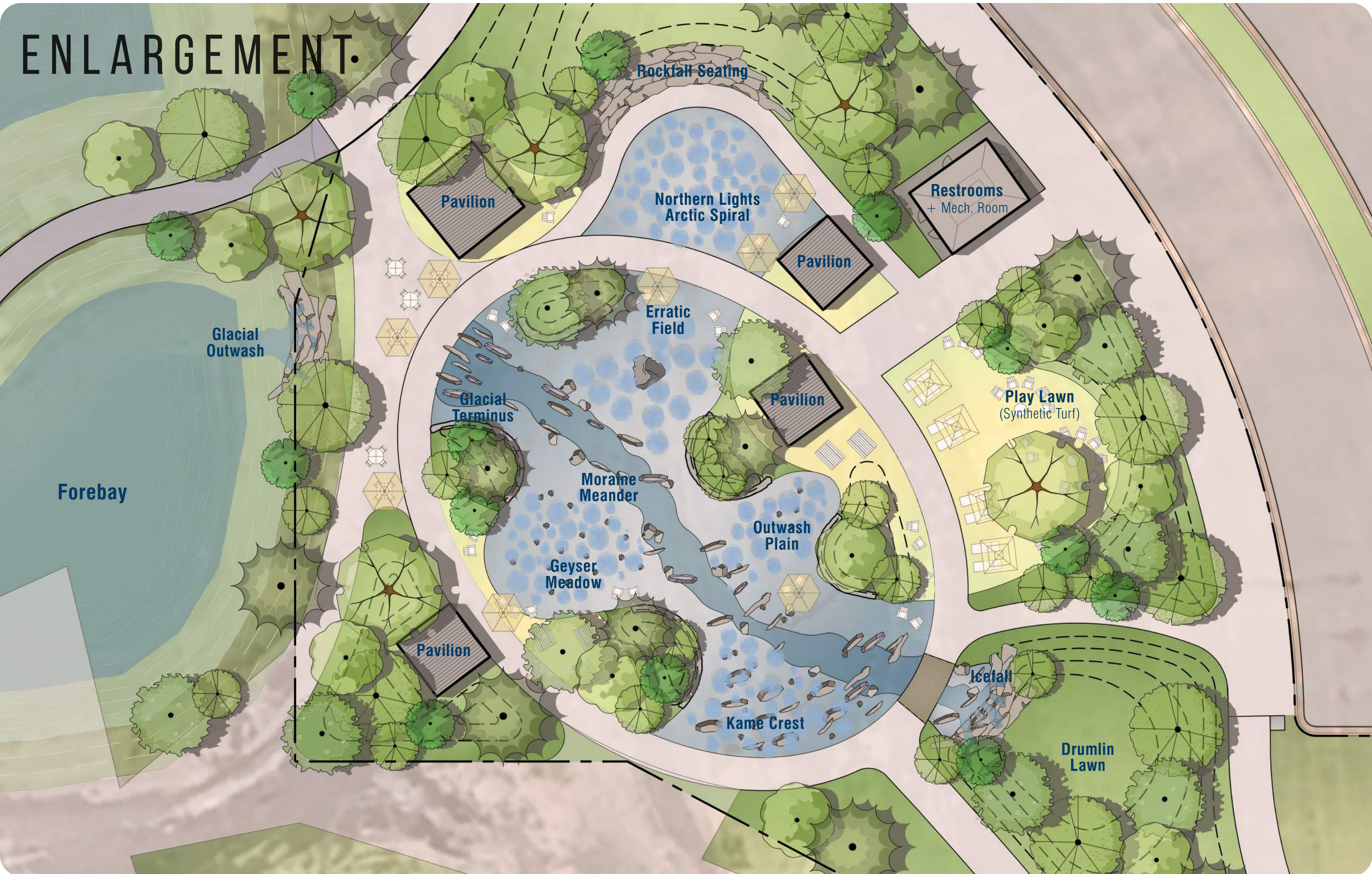
Total Water Play: 22,250 sf



CENTER STREET

RAMSEY PARKWAY

# ENLARGEMENT.



# STONE CONSIDERATIONS



## SUMMARY

### LOCAL STONE

- Alternatives: Granite, Jasper, Virginia Slate
- Material Characteristics:
  - Finish: As-is material with natural cleft or broken faces
  - Texture: Rough and non-slip — appropriate for use in/around water play environments
  - Sizes: Available in a range of sizes; large quarried blocks also possible
  - Availability: Inventory on-hand – no shop fabrication required
  - Ideal for fast-track construction timelines
- Pricing
  - \$40–\$60 per cubic foot, including shipping
  - Final pricing dependent on size, quantity, and delivery specifics
- Design Intent & Use
  - Integrate natural boulders as sculptural and functional site features:
  - Seating
  - Edge containment
  - Climbable elements (pending safety review)
  - Integration with splash pad grading & water features
  - Avoids fabrication delays; aligns with fast-tracked construction schedule

# FURNISHINGS - SEATING

## BENCHES + ADIRONDACKS



## TABLES + CHAIRS / DINING



# FURNISHINGS- SITE ELEMENTS

## RECEPTACLES



## PLANTERS



## BIKE ACCOMMODATIONS



# UMBRELLAS + PAVILIONS

## UMBRELLAS



## PAVILIONS



# LIGHTING

## POSTS



## BOLLARDS / PATHWAY



## CATENARY LIGHTS



## BENCH / WALL



# PUBLIC ART



# USER DIAGRAM

1,400 PEOPLE

