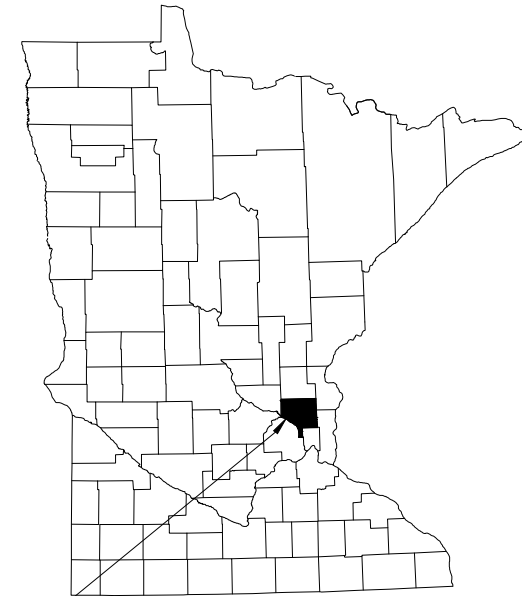
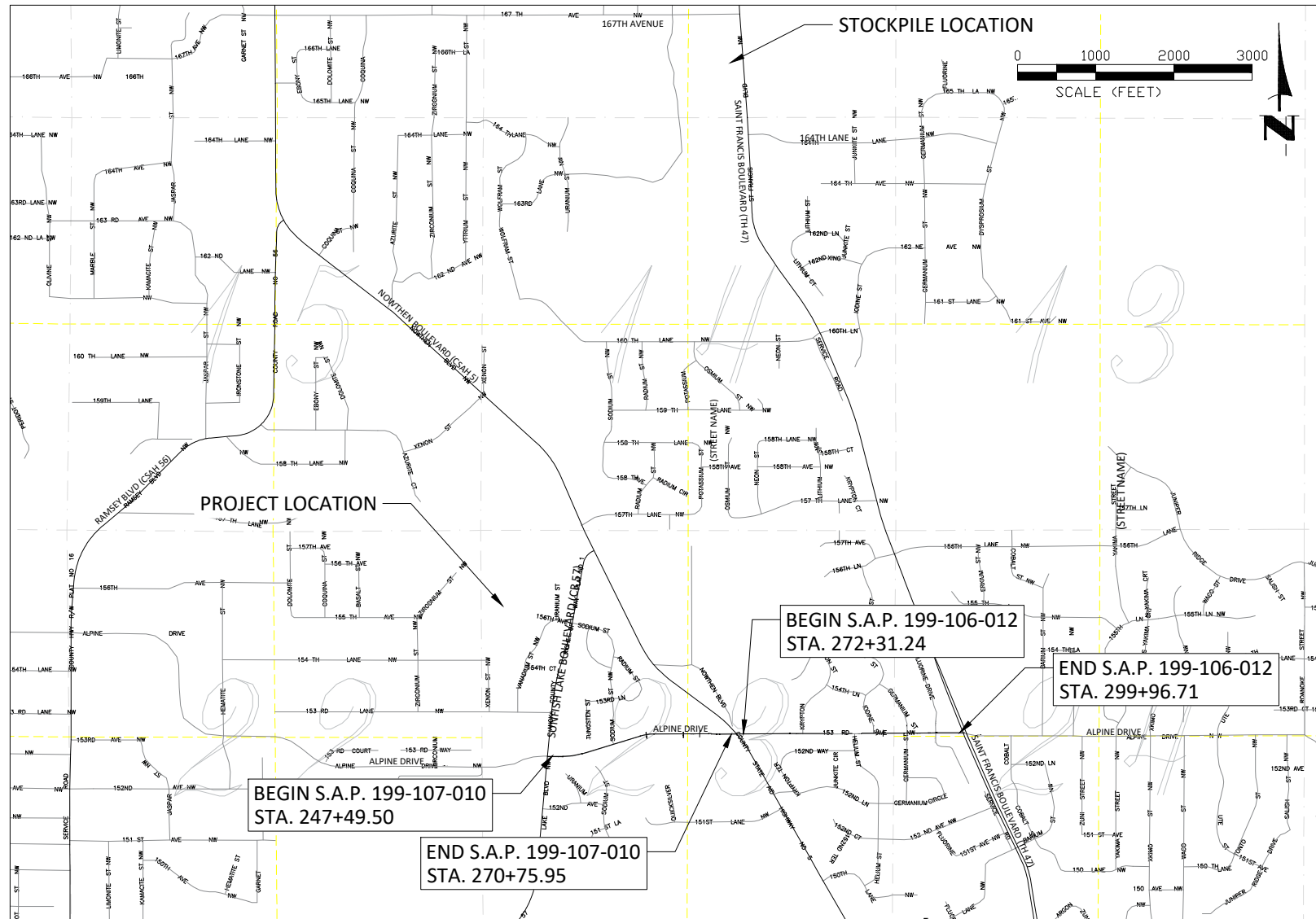


# CITY OF RAMSEY

## STREET CONSTRUCTION PLANS FOR BITUMINOUS RECLAMATION AND PAVING.

S.A.P. 199-106-012 & S.A.P. 199-107-010

S.A.P. LOCATED ON ALPINE DRIVE BETWEEN SUNFISH LAKE BOULEVARD (CR 57) AND SAINT FRANCIS BOULEVARD (TH 47) FROM NW 1/4 OF THE SW 1/4 OF S23, T32, R25 TO SW 1/4 OF THE NW 1/4 OF S24, T32, R25



CITY OF RAMSEY  
ANOKA COUNTY, MINNESOTA  
DISTRICT: METRO

THE SUBSURFACE UTILITY INFORMATION IN THIS PLAN IS UTILITY QUALITY LEVEL D. THIS QUALITY LEVEL WAS DETERMINED ACCORDING TO THE GUIDELINES OF CI/ASCE 38-02, ENTITLED "STANDARD GUIDELINES FOR THE COLLECTION AND DEPICTION OF EXISTING SUBSURFACE UTILITY DATA."

NOTE: EXISTING UTILITY INFORMATION SHOWN ON THIS PLAN HAS BEEN PROVIDED BY THE UTILITY OWNER. THE CONTRACTOR SHALL FIELD VERIFY EXACT LOCATIONS PRIOR TO COMMENCING CONSTRUCTION AS REQUIRED BY STATE LAW. NOTIFY GOPHER STATE ONE CALL 1-800-252-1166 OR 651-454-0002



Call before you dig  
811  
651-454-0002 Metro  
800-252-1166 Outstate  
www.gopherstateonecall.org

### GOVERNING SPECIFICATIONS

THE 2020 EDITION OF THE MINNESOTA DEPARTMENT OF TRANSPORTATION "STANDARD SPECIFICATIONS FOR CONSTRUCTION SHALL GOVERN.

THE 2023 EDITION OF THE CITY ENGINEERS ASSOCIATION OF MINNESOTA "STANDARD SPECIFICATIONS" SHALL GOVERN FOR UTILITY INSTALLATIONS.

ALL FEDERAL, STATE AND LOCAL LAWS, REGULATIONS AND ORDINANCES SHALL BE COMPLIED WITH IN THE CONSTRUCTION OF THIS PROJECT.

ALL TRAFFIC CONTROL DEVICES AND SIGNING SHALL CONFORM TO THE MINNESOTA MANUAL ON UNIFORM TRAFFIC CONTROL DEVICES, INCLUDING THE FIELD MANUAL FOR TEMPORARY TRAFFIC CONTROL ZONE LAYOUTS.

#### SHEET INDEX

THIS PLAN CONTAINS 84 SHEETS

SHEET NO.	DESCRIPTION
01	TITLE SHEET
02	STATEMENT OF ESTIMATED QUANTITIES
03	TABULATIONS
04	ALIGNMENT LAYOUT
05-06	TYPICAL SECTIONS
07-09	CITY DETAILS
10	INTERSECTION DETAILS
11-16	MINDOT PEDESTRIAN RAMP DETAILS
17	MINDOT LOOP DETECTORS STANDARD PLAN
18-19	SWPPP
20-27	GRADING & EROSION CONTROL
28-35	EXISTING CONDITIONS & REMOVALS
36-43	STREET CONSTRUCTION
44-47	PAVEMENT MARKINGS
48-65	CROSS SECTIONS - CR 57 TO CSAH 5
66-84	CROSS SECTIONS - CSAH 5 TO TH 47

Mar 21, 2025 - 9:30am G:\Engineering\AutoCad Dwg\Projects A-M\Alpine Drive - CR 57 to TH 47 25-03\Plan Drawings\25-03 Title Sheet.dwg

PROJECT	STA. TO STA.	GROSS LENGTH (FEET)	BRIDGE LENGTH (FEET)	NET LENGTH (FEET)	NET LENGTH (MILES)	ADT (2025)	ADT (2045)	DESIGN ESAL	R VALUE	TON DESIGN	DESIGN SPEED (MPH)	DESIGN SPEED NOT MET	NO. OF LANES	LANE WIDTH (FEET)	NO. OF SHOULDERS	SHOULDER WIDTH (FEET)	FUNCTIONAL CLASSIFICATION
S.A.P. 199-106-012	272+31.24 TO 299+96.71	2,765	0	2,765	0.5200	2,590	3,010	316,000	70	10	45	N/A	2	12	1 TO 2	0 TO 11	COLLECTOR
TRAIL S.A.P. 199-106-012 NORTH SIDE	278+59.97 TO 299+38.71	2,079	0	2,079	0.3900	N/A	N/A	N/A	70	N/A	20	299+12.42 TO 299+27.98 MATCH EXISTING	1	8	N/A	N/A	TRAIL
TRAIL S.A.P. 199-106-012 SOUTH SIDE	272+90.09 TO 299+95.82	2,706	0	2,706	0.5100	N/A	N/A	N/A	70	N/A	20	289+37.48 TO 289+62.22 MATCH EXISTING	1	8 TO 10	N/A	N/A	TRAIL
S.A.P. 199-107-010	247+49.50 TO 270+75.95	2,326	0	2,326	0.4400	3,020	4,590	433,000	70	10	45	N/A	2	12	1 TO 2	3 TO 10	COLLECTOR
TRAIL S.A.P. 199-107-010 NORTH SIDE	247+49.50 TO 270+75.95	2,288	0	2,288	0.4300	N/A	N/A	N/A	70	N/A	20	257+49.24 TO 257+79.76 MATCH EXISTING	1	8	N/A	N/A	TRAIL
TRAIL S.A.P. 199-107-010 SOUTH SIDE	247+49.50 TO 256+31.52	901	0	901	0.1700	N/A	N/A	N/A	70	N/A	20	256+20.38 TO 256+31.50 MATCH EXISTING	1	8	N/A	N/A	TRAIL


I hereby certify that this plan, specification, or report was prepared by me or under my direct supervision and that I am a duly Licensed Professional Engineer under the laws of the State of Minnesota.

JOE FERIAN , P.E. 57095 LIC. NO. DATE 03/21/25

APPROVED: \_\_\_\_\_ DATE \_\_\_\_\_  
CITY ENGINEER, CITY OF RAMSEY

DISTRICT STATE AID ENGINEER: REVIEWED FOR COMPLIANCE WITH STATE AID RULES/POLICY

STATE AID ENGINEER: APPROVED FOR STATE AID FUNDING



CITY OF RAMSEY  
7550 SUNWOOD DRIVE  
RAMSEY, MN 55303  
(763) 427-1410 FAX (763) 433-9898

STOPPING SIGHT DISTANCE BASED ON:  
3.5 FT - HEIGHT OF EYE  
2.0 FT - HEIGHT OF OBJECT

DATUM:  
VERTICAL: NAVD 88  
HORIZONTAL: ANOKA COUNTY COORDINATES (1996 ADJUSTMENT)

DATE	REVISION
	SAP 199-106-012
	SAP 199-107-010