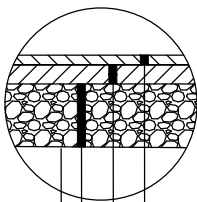
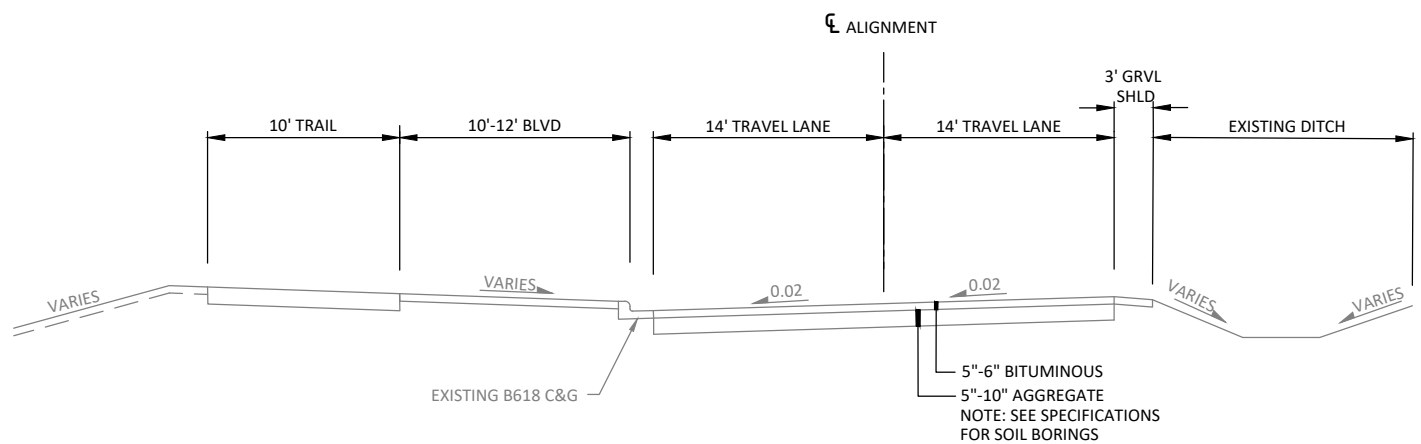
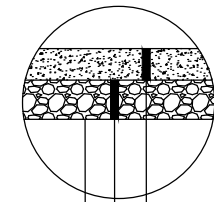


**EXISTING BUNKER LAKE BOULEVARD**



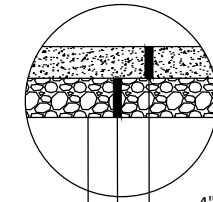
2.0" TYPE SP 9.5 WEARING COURSE (SPWEA340C) (2360)  
 2.5" TYPE SP 12.5 NON WEARING COURSE (SPNWB330C) (2360)  
 6.5" MINIMUM AGGREGATE BASE (RECLAMATION IN-PLACE MEETING STR-26 GRADATION. SEE SHEET 9.)  
 SUBGRADE PREPARATION (2112) (INCIDENTAL)

**INSET A  
ROADWAY SECTION**



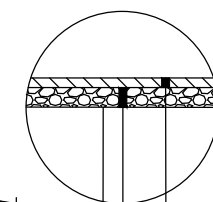
6.0" CONCRETE WALK (2521)  
 4.0" AGGREGATE BASE CL 5, MOD (2211) OR EXCESS RECLAIM MATERIAL. SEE SHEET 9.  
 SUBGRADE PREPARATION (2112) (INCIDENTAL)

**INSET B  
SIDEWALK SECTION AT PEDESTRIAN CURB RAMPS**



4" CONCRETE (2521)  
 4.0" AGGREGATE BASE CL 5, MOD (2211) OR EXCESS RECLAIM MATERIAL. SEE SHEET 9.  
 SUBGRADE PREPARATION (2112) (INCIDENTAL)

**INSET D  
MEDIAN PAVEMENT**

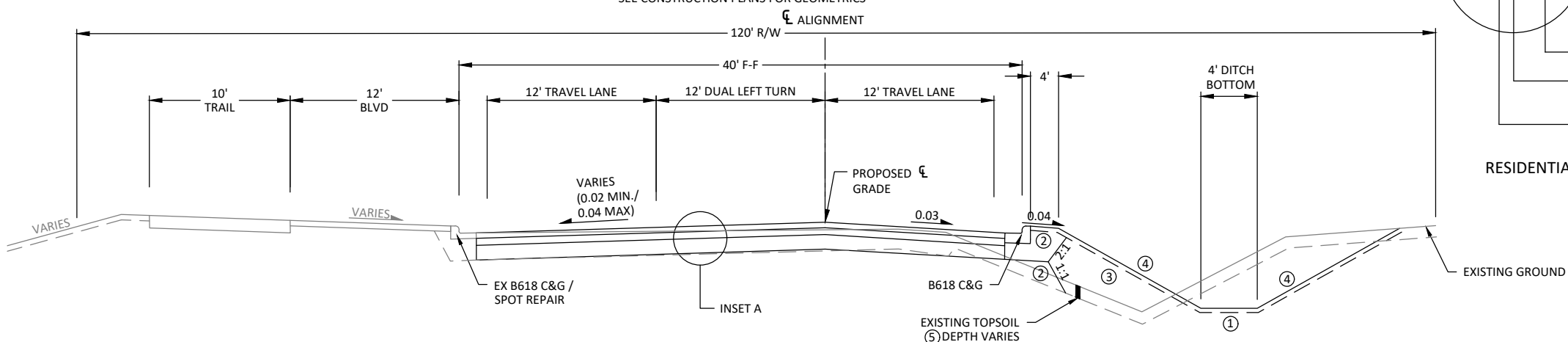


3.0" TYPE SP 9.5 WEARING COURSE (SPWEA340C) (2360)  
 6.0" AGGREGATE BASE CL 5, MOD (2211) OR EXCESS RECLAIM MATERIAL. SEE SHEET 9.  
 SUBGRADE PREPARATION (2112) (INCIDENTAL)

**INSET C  
RESIDENTIAL DRIVEWAY SECTION**

**PROPOSED BUNKER LAKE BOULEVARD**

STA. 102+50 TO STA. 123+56 (BUNKER LK BLVD ALIGNMENT)  
 SEE CONSTRUCTION PLANS FOR GEOMETRICS



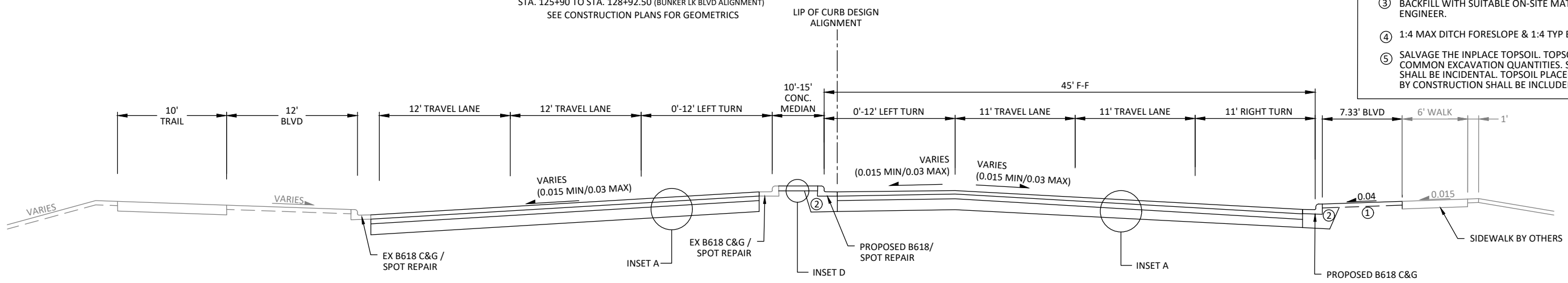
**GENERAL NOTES:**  
 ALL DIMENSIONS ARE IN FEET, UNLESS OTHERWISE NOTED.  
 ALL CROSS SLOPES ARE FT. PER FT.  
 THE TOP OF GRADING GRADE IS DEFINED AS THE BOTTOM OF THE CLASS 5 AGGREGATE BASE.  
 UNLESS OTHERWISE INDICATED, THE GRADING GRADE AND TOP OF SUBGRADE WILL HAVE THE SAME SLOPE AS THE FINISHED ROAD SURFACE.  
 BITUMINOUS MATERIAL FOR TACK COAT (2357) SHALL BE APPLIED BETWEEN EVERY LIFT OF PAVEMENT UNLESS NOTED OTHERWISE (INCIDENTAL).

**SPECIFIC NOTES:**

- MINIMUM 4" SLOPE DRESSING EMBANKMENT.
- EXTEND AGGREGATE BASE 1.5FT BEYOND BACK OF CURB. BACKFILL WITH SELECT GRADING MATERIAL.
- BACKFILL WITH SUITABLE ON-SITE MATERIAL AS APPROVED BY THE ENGINEER.
- 1:4 MAX DITCH FORESLOPE & 1:4 TYP BACKSLOPE, 1:3 MAX BACKSLOPE
- SALVAGE THE INPLACE TOPSOIL. TOPSOIL QUANTITY IS INCLUDED IN COMMON EXCAVATION QUANTITIES. STOCKPILING INPLACE TOPSOIL SHALL BE INCIDENTAL. TOPSOIL PLACEMENT ON ALL SLOPES DISTURBED BY CONSTRUCTION SHALL BE INCLUDED IN COMMON EMBANKMENT.

**PROPOSED BUNKER LAKE BOULEVARD**

STA. 125+90 TO STA. 128+92.50 (BUNKER LK BLVD ALIGNMENT)  
 SEE CONSTRUCTION PLANS FOR GEOMETRICS



© Bolton & Menk, Inc. 2025. All Rights Reserved. 11/2/2025 9:52:48 AM

I HEREBY CERTIFY THAT THIS PLAN, SPECIFICATION, OR REPORT WAS PREPARED BY ME OR UNDER MY DIRECT SUPERVISION AND THAT I AM A DULY LICENSED PROFESSIONAL ENGINEER UNDER THE LAWS OF THE STATE OF MINNESOTA.  
 ZACHARY F. LINGL, P.E.  
 LIC. NO. 56344 DATE MM/DD/YYYY



7533 SUNWOOD DR NW, SUITE 206  
 RAMSEY, MN 55303  
 Phone: (763) 433-2851  
 Email: Ramsey@bolton-menk.com  
 www.bolton-menk.com



DESIGNED	NO.	ISSUED FOR	DATE
ZFL			
DRAWN			
JMB			
CHECKED			
ZFL			
CLIENT PROJ. NO.			
26-01			

**CITY OF RAMSEY, MINNESOTA**  
 2026 BUNKER LAKE BOULEVARD RECONSTRUCTION  
 TYPICAL SECTIONS  
 SAP 199-121-003

SHEET 6 OF 50