

Black/Green Text = Carried over verbatim

Gold Text = Partially verbatim, paraphrased, or combined carried over paragraphs.

Red Text = Text deleted from a carried over paragraph

Blue Text = New text

## **Chapter 108 – Signs**

### **Article I. In General**

#### Sec. 108-105 – Definitions

If a word or term defined in this chapter appears in the text, its meaning may be construed as set forth in the definition of the word or term as found in this section, except where the context clearly indicates a different meaning. If a word is not defined herein, a term is defined by commonly used English language dictionaries.

*Abandoned sign* means a sign which no longer identifies or advertises a bona fide business, lesser, service, owner, product, or activity, and/or for which no legal owner or lesser can be found.

~~Address sign means identification numbers only, whether written or in numerical form.~~ (This definition was moved to Chapter 105 in 2023.)

*Area identification sign* means a freestanding or wall sign which identifies ~~a single family or multifamily residential subdivision, a commercial development or an industrial park or office park and which is located on the same parcel as the development it identifies.~~ the name of any of the following:

- (1) A residential subdivision;
- (2) A multiple residential complex consisting of three or more structures;
- (3) A business or industrial structure containing two or more independent concerns;
- (4) A single business or industrial complex consisting of three or more separate structures existing on individual platted lots or as a planned unit development;
- (5) A mobile home court;
- (6) Any integrated combination of such developments or structures; or
- (7) A shopping center.

Such signs shall identify an area or complex and may also name the principal business in the building or development.

~~Advertising device sign~~ *Attention-getting device* means any object or device that has as its purpose to promote, advertise, or sell a product or service obtainable on the premises upon which the ~~sign~~ object or device is located, and not to identify the premises.

*Awning* means a hood or cover which projects from the wall of a building.

*Awning sign* means a sign attached or affixed to an awning.

*Banner* means a sign made of fabric or non-rigid material with no enclosing framework.

*Bench sign* means a sign which is affixed to a bench.

*Billboard* means a sign which directs attention to a business, commodity, service, entertainment, or attraction sold, offered or existing elsewhere than upon the same lot or parcel where such sign is displayed.

*Box cabinet sign* means an exterior sign that is constructed to be substantially supported by a separate box-like structure, with each segment of the sign message attached to one or a group of supports, and with or without internal illumination.

*Business directory sign* means a sign which identifies the names of the specific businesses located in a shopping center or business or industrial park and which is located on the parcel of the center so identified.

~~Business sign means a sign relating in its subject matter to the parcel on which it is located, or to products, accommodations, services or activities on the parcel on which it is located.~~

Canopy means a permanent roof-like structure of rigid materials.

Canopy sign means a sign attached or affixed to a canopy.

~~Attraction board manual~~ Changeable copy sign means a sign on which the copy or message is changed manually rather than by automated or electronic means.

Channel letter means a custom-made metal or plastic letter, number, or symbol, with or without internal illumination, that is used in exterior signage.

Directional or instructional sign means a sign providing no advertising of any kind, which provides direction or instruction to guide persons to facilities intended to serve the public, including but not specifically limited to those signs identifying restrooms, public telephones, public walkways, affiliation with motor clubs, acceptance of designated credit cards, and other similar signs providing direction or instruction to persons using a facility but not including those signs accessory to parking areas.

Dynamic display means any characteristic of a sign that appears to have movement or that appears to change, caused by any method other than physically removing and replacing the sign or its components, whether the apparent movement or change is in the display, the sign structure itself, or any other component of the sign. This includes a display that incorporates a technology or method allowing the sign face to change the image without having to physically or mechanically replace the sign face or its components. This also includes any rotating, revolving, moving, flashing, blinking, or animated display and any display that incorporates rotating panels, LED lights manipulated through digital input or any other method of technology that allows the sign face to present a series of images or displays.

Eaves means the part of a roof that meets or overhangs the walls of a building.

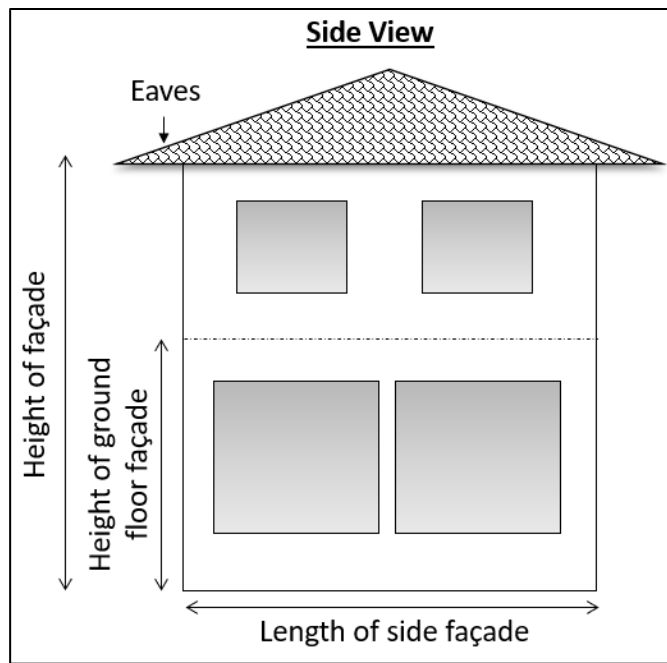
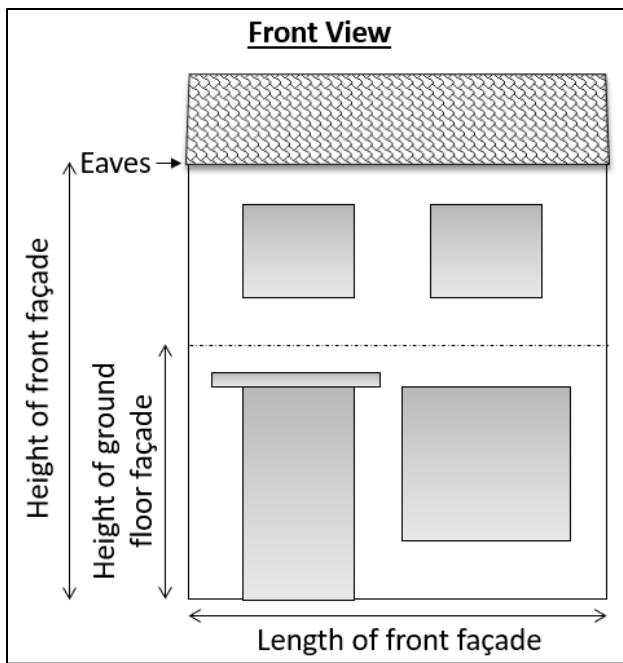
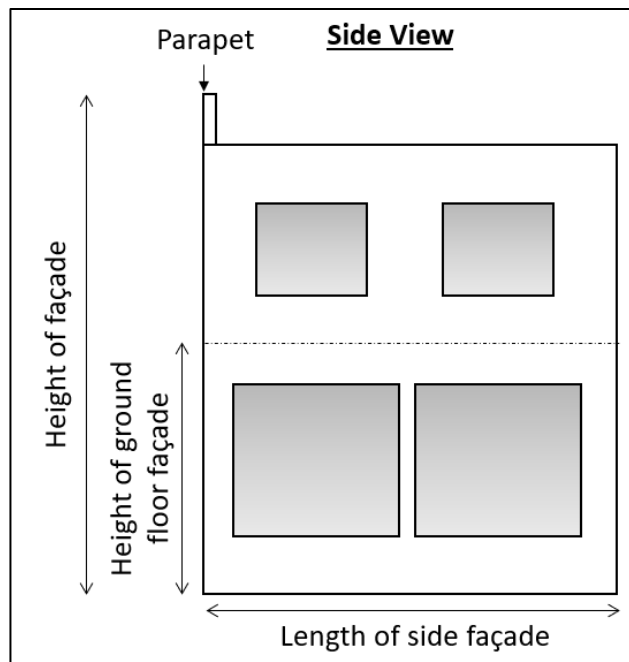
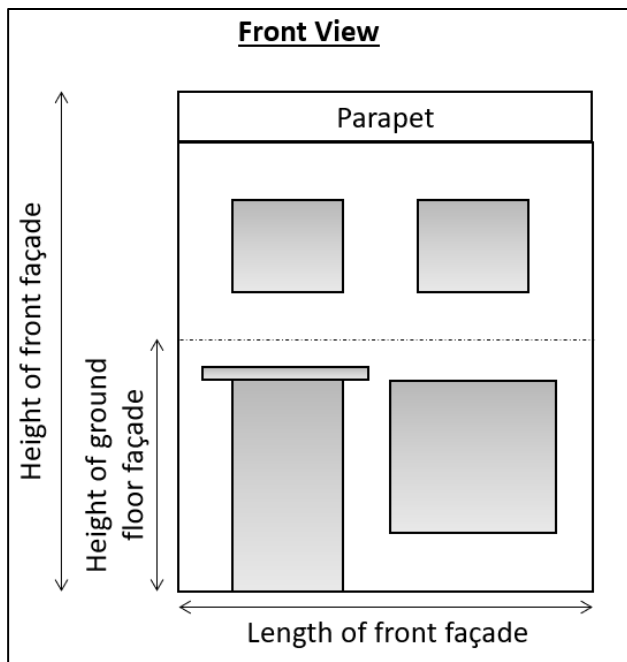
External illumination means illumination of a sign which is affected by an artificial source of light which is not contained within the sign itself.

Feather sign means a freestanding temporary sign consisting of a piece of flexible cloth, plastic or other similar material that is attached lengthwise to a single pole and designed to flutter or wave in the wind.

Flashing or scrolling signs or lights means a sign or lighting, other than a manual changeable copy sign, including dynamic display, which contains an intermittent or sequential flashing light source used primarily to attract attention.

Freestanding sign means a sign that is self-supporting and affixed to a frame structure and not attached to a building. Freestanding signs include monument signs and pylon signs.

Front façade means the vertical face of a building oriented along or toward the street to which the building is addressed. The area of the front façade is calculated by multiplying the length of the wall facing the street, as measured from edge to edge along the grade adjacent to the building, by the height of that same wall, as measured from the average grade adjacent to the building to the top of the parapet or eaves, whichever is less.



*Governmental sign* means a sign which is erected by a governmental unit.

~~*Ground sign* means a sign supported by structures or supports or upon the ground and not attached or dependent for support from any building.~~

*Highway 10 Signage Overlay District* means a district for purposes of allowing additional signage in a specified area due to limited visibility created by overpasses on Highway 10, described as all commercially zoned property located within 750 feet of the centerline of Highway 10 between the eastern border of the City of Ramsey and the centerline of Llama Street. Parcels located within the COR Zoning District are excluded from this overlay district, as sign regulations for that district are located in a separate section of the City Code.

*Illuminated sign* means any sign which is illuminated by an artificial light source.

*Mansard* means a sloped roof or roof-like facade architecturally comparable to a building wall.

*Marquee* means a permanent roof-like structure of rigid materials supported by and extending from the facade of a building.

*Monument sign* means a freestanding sign not supported by exposed posts or poles which is architecturally designed and located directly at grade. ~~where the base width dimension is at least as wide as the sign.~~

*Motion sign* means any sign which revolves, rotates or has any moving parts.

*Nameplate/identification sign* means a sign which bears the name and/or address of the occupants of the building.

*Nonconforming sign, illegal*, means a sign which unlawfully existed prior to the adoption of the ordinance from which this chapter is derived.

*Nonconforming sign, legal*, means a sign which lawfully existed prior to the adoption of the ordinance from which this chapter is derived, but does not conform to the newly enacted requirements of this chapter.

~~Sign, advertising~~ *Off-premise sign* means a sign which directs attention to a business, commodity, service, activity or entertainment not necessarily conducted, sold or offered upon the premises where such sign is located.

*Parapet* means a low protective wall along the edge of a roof.

*Pennants* means attention-getting devices which resemble flags and are of non-permanent paper, cloth or plastic-like consistency.

*Permanent sign* means any sign which is not defined as a temporary sign.

*Political sign* means a temporary sign used in connection with any local, state or national election or referendum, ~~as regulated by State law.~~

*Portable sign* means any sign designed to be removed and not permanently affixed to the ground or a structure or a building.

*Projecting sign* means any sign, all or any part of which extends beyond the surface of the building or wall by more than 16 inches.

*Pylon sign* means any permanent, freestanding sign mounted on posts or columns.

*Raceway* means a separate structure attached to a wall upon which channel letters can be mounted.

*Roof sign* means any sign erected upon the roof of a structure to which it is affixed.

*Sign* means any letter, word or symbol, device, poster, picture, statuary, reading matter, or representation in the nature of an advertisement, announcement, message or visual communication, ~~whether painted, posted, printed, affixed or constructed~~, which is displayed ~~outdoors~~ ~~to direct the attention of the public~~ for informative or communicative purposes. ~~Such communication located completely within an enclosed building and not exposed to view from a street shall not be considered a sign.~~

*Sign area* means that area within the marginal lines of the surface which bears the advertisement, or in the case of messages, figures or symbols attached directly to any part of a building, that area which is included in the smallest geometric shape which can be made to circumscribe the message, figure or symbol displayed thereon. The stipulated maximum sign area for a free standing or ground sign refers to a single facing.

*Sign, maximum height of*, means the vertical distance measured from the grade to the top of such a sign.

*Sign, minimum height of*, means the vertical distance measured from the nearest finished grade to the lower limit of such sign.

*Temporary sign* means a sign which is erected or displayed for a limited period of time. ~~and not affixed to a Minnesota State Building Code approved structure.~~

*Wall sign* means any sign which is affixed to or erected against a wall of any building, including signs with individual letters, box cabinets, channelized components, service bay identification signs, and signs on mansards.

*Window sign* means a sign installed inside a window, or any sign placed within a building for the purpose of being visible from the public right-of-way. This does not include merchandise on display.