



**FINN DANIELS
ARCHITECTS**
1440 Northland Drive, Suite 250
Mendota Heights, MN 55120
651.690.5525 // www.finn-daniels.com

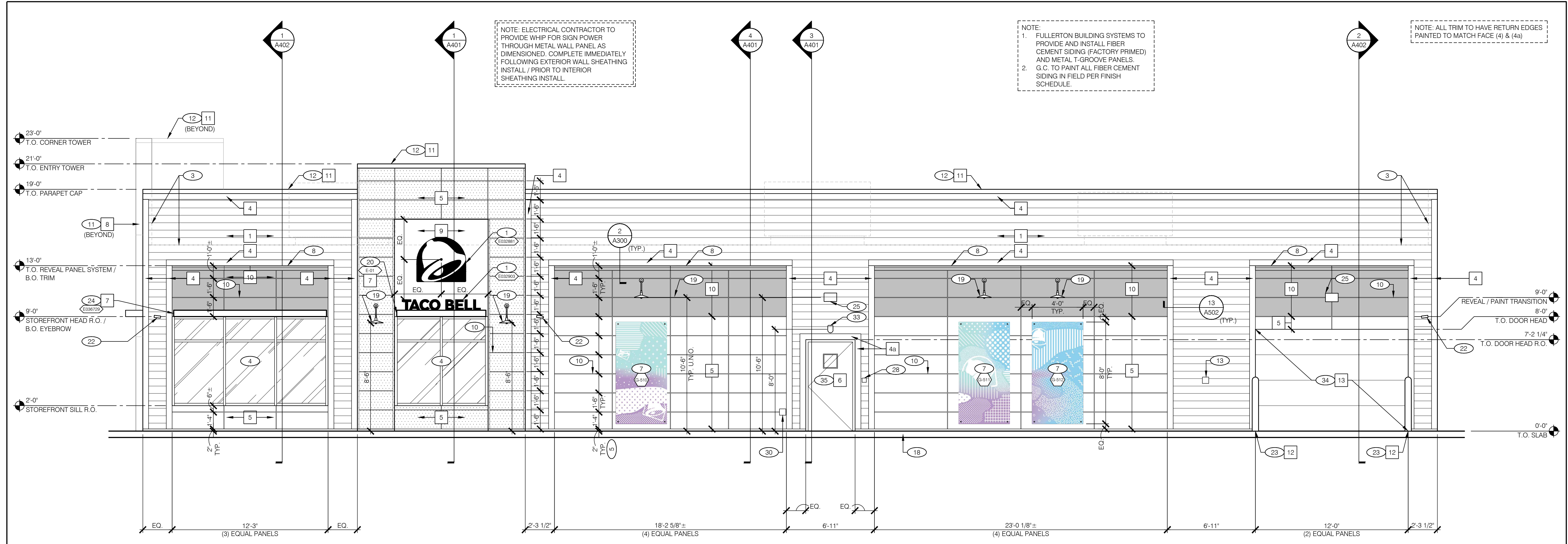


14751 ARMSTRONG BLVD NW
RAMSEY, MN 55303

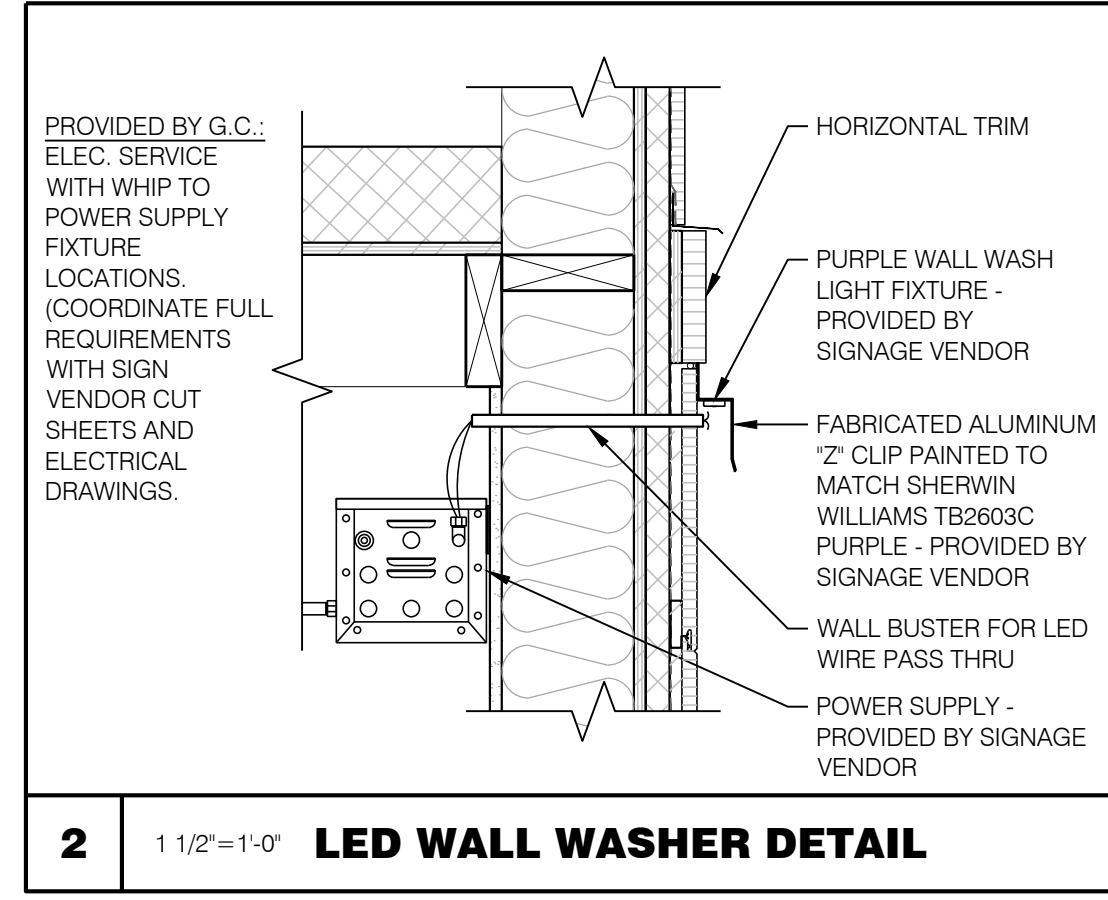
NOTE: ELECTRICAL CONTRACTOR TO PROVIDE WHIP FOR SIGN POWER THROUGH METAL WALL PANEL AS DIMENSIONED. COMPLETE IMMEDIATELY FOLLOWING EXTERIOR WALL SHEATHING INSTALL / PRIOR TO INTERIOR SHEATHING INSTALL.

NOTE:
1. FULLERTON BUILDING SYSTEMS TO PROVIDE AND INSTALL FIBER CEMENT SIDING (FACTORY PRIMED) AND METAL T-GROOVE PANELS.
2. G.C. TO PAINT ALL FIBER CEMENT SIDING IN FIELD PER FINISH SCHEDULE.

NOTE: ALL TRIM TO HAVE RETURN EDGES PAINTED TO MATCH FACE (4) & (4a)



1 1/4"=1'-0" **EAST ELEVATION**



2 1/2"=1'-0" **LED WALL WASHER DETAIL**

QTY.	ITEM (ART FAMILY "B")
2	CAMO PATTERN - PURPLE - EXPRESSION PANEL
2	CAMO PATTERN - PURPLE - EXPRESSION PANEL
2	CAMO PATTERN - PURPLE - EXPRESSION PANEL

NOTE: TYPICAL SIZE 4'-0" X 8'-0" (32 S.F.)

EXTERIOR ARTWORK SCHEDULE

MISCELLANEOUS:
1. SEE SHEET A000 "WINDOW TYPES" FOR WINDOW ELEVATIONS.

SEALERS (REFER TO SPECIFICATIONS):
1. SEALANT AT ALL WALL AND ROOF PENETRATIONS.
2. SEALANT AT ALL WINDOW AND DOOR FRAMES AT HEAD AND JAMB. DO NOT SEAL SILL AT WINDOWS.
3. APPLY NEOPRENE GASKET (CONTINUOUS) BETWEEN BUILDING AND CANOPY.

"CRITICAL" DIMENSIONS:
1. REQUIRED CLEAR OPENING WIDTH TO ENSURE COORDINATION WITH STANDARD SIGNAGE / BUILDING ELEMENTS DIMENSIONS.

PAINTING:
1. APPLICATOR MUST DO THEIR DUE DILIGENCE WITH PREPARATION.
PRIMER: 1 COAT SW A24H8300
FINISH: 2 COATS SW A82-100 SERIES, MATCH COLORS FROM MATERIAL SCHEDULE. A-100 EXTERIOR LATEX SATIN.

NOTE: NO EXTERIOR SIGNS ARE WITHIN THE SCOPE OF WORK COVERED BY THE BUILDING PERMIT APPLICATION. THE GENERAL CONTRACTOR SHALL BE RESPONSIBLE FOR COORDINATING THE INSTALLATION OF ALL EXTERIOR SIGNS AND INSTALLATION OF REQUIRED BLOCKING AND ELECTRICAL CONNECTIONS FOR FINAL APPROVED SIGNS.

GENERAL NOTES

QTY	ITEM DESCRIPTION	ELEC.
1	DRIVE-THRU AWNING 9'-0" X 4'-0" BLACK	X
1	FRONT EYEBROW (WINDOW) 16'-7"L. X 6'H. X 1'-4"D. BLACK	X
1	D.T. EYEBROW (WINDOW) 7'-8"L. X 6'H. X 1'-4"D. BLACK	X
1	SIDE EYEBROW (WINDOW) 12'-0"L. X 6'H. X 1'-4"D. BLACK	X
1	VESTIBULE AWNING 7'-0"L. X 6'H. X 3'-0"D. BLACK (CUSTOM)	X
10	PURPLE ACCENT WALL WASH LIGHT FIXTURE. LENGTH AS REQUIRED AT PURPLE ACCENT WALLS. PROVIDED AND INSTALLED BY SIGN VENDOR.	X

CANOPY AND BUILDING ACCENT SCHEDULE

QTY	ITEM DESCRIPTION	ELEC.
1	TACO BELL PYLON / DRIVE-THRU SIGN 7'-11"W X 13'-4"H SIGN FACE - T.O. SIGN AT 25'-0" ABOVE GRADE (100 S.F.)	X
3	42" SWINGING BELL PURPLE LOGO. 3'-6"H. X 3'-10 1/2"W. (113.53 S.F.)	X
1	10" WHITE CHANNEL LETTERS - AWNING MOUNTED (5.01 S.F.)	X
2	14" WHITE CHANNEL LETTERS - WALL MOUNTED - STACKED (9.9 S.F.)	X

NOTE: SIGNAGE UNDER SEPARATE PERMIT

SIGN SCHEDULE

SYMBOL	AREA	MANUFACTURER	COLOR	CONTACT INFORMATION
1	SIDING	JAMES HARDIE	JAMES HARDIE PLANK LAP SIDING - PRIMED FOR PAINT COLLECTION; 144"L X 8.25"W. - 7' EXPOSURE. PAINT WORLDLY GRAY (SW7043) SEMI-GLOSS	-
2	SCUPPERS	-	PREFINISHED - BLACK, SEMI-GLOSS	-
3	DOWNSPOUTS	-	PREFINISHED - BLACK, SEMI-GLOSS	-
4	HARDIE TRIM	JAMES HARDIE	HARDIE TRIM 5/4 SMOOTH 1" X 5.5" - PAINT CYBERSPACE (SW7076) SEMI-GLOSS	SEE SHEET A001 FOR CONTACT INFORMATION
4a	HARDIE TRIM	JAMES HARDIE	HARDIE TRIM 5/4 SMOOTH 1" X 5.5" - PAINT WORLDLY GRAY (SW 7043) SEMI-GLOSS	SEE SHEET A001 FOR CONTACT INFORMATION
5	HARDIE REVEAL PANEL	NICHIHA	NICHIHA ILLUMINATION DESIGNER SERIES; 17 7/8"H. X 71 9/16"L. (CUT TO PLAN DIMENSIONS) FACTORY PRIMED. PAINT SW PURPLE TB2603C SEMI-GLOSS	-
6	HOLLOW METAL DOOR / ELECTRICAL EQUIPMENT	-	PAINT WORLDLY GRAY (SW7043) SEMI-GLOSS	-
7	AWNINGS	SIGNAGE VENDOR	BLACK BY SIGNAGE VENDOR	-
8	CORNER TOWER	WESTERN STATE	T-GROOVE 24 GA. PAINTED 18" PANEL - WEATHERED RUSTIC	SEE SHEET A001 FOR CONTACT INFORMATION
9	RECESS OF SIDE ENTRY PORTAL	WESTERN STATE	T-GROOVE 24 GA. PAINTED 18" PANEL - WEATHERED RUSTIC	SEE SHEET A001 FOR CONTACT INFORMATION
10	HARDIE REVEAL PANEL	NICHIHA	NICHIHA ILLUMINATION DESIGNER SERIES; 17 7/8"H. X 71 9/16"L. (CUT TO PLAN DIMENSIONS) FACTORY PRIMED. PAINT SW PURPLE TB2603C SEMI-GLOSS	-
11	METAL PARAPET CAP	-	24 GA. GALVANIZED - CYBERSPACE (SW7076) KYMAR 500 COATING	-
12	PIPE BOLLARDS	STREET SMART	YELLOW - 1/4" THICK PLASTIC COVER (US.POSTMAN.COM) OR EQUAL	COVER PROVIDED BY OWNER, INSTALLED BY G.C.
13	OVERHEAD DOOR	-	PRE-FINISHED (COLOR TO MATCH CYBERSPACE (SW7076) PROVIDE COLOR SAMPLE TO ARCHITECT FOR APPROVAL	-

EXTERIOR FINISH SCHEDULE

- 1 BUILDING SIGN, BY VENDOR. REQUIRES ELECTRICAL. SEE ELECTRICAL PLANS.
- 2 DRIVE-THRU WINDOW. SEE SHEET A000 AND A200.
- 3 DASHED LINE INDICATES ROOF BEYOND.
- 4 STOREFRONT, TYPICAL.
- 5 HOLD FIBER CEMENT FINISH ABOVE FINISHED GRADE PER MANUFACTURER'S RECOMMENDATIONS. (2" MIN. AT CONCRETE / BITUMINOUS; 6" MIN. AT SOIL / TURF / LANDSCAPING).
- 6 SWITCH GEAR. PAINT TO MATCH WALL.
- 7 EXPRESSION PANEL. SUPPLIED BY OWNER, INSTALLED BY G.C.
- 8 PURPLE LED WALL WASH LIGHT FIXTURE FULL WIDTH BETWEEN TRIM BOARDS, AS SHOWN, PROVIDED AND INSTALLED BY SIGNAGE VENDOR.
- 9 ASSUME DRIVE-THRU LANE SURFACE IS 6" BELOW THE FINISH FLOOR. REFER TO GRADING AND SITE PLAN.
- 10 TYPICAL REVEAL LOCATION AS DIMENSIONED. SEE 12/A502.
- 11 TOWER WITH METAL PANEL FINISH PROVIDED BY FULLERTON.
- 12 PREFINISH PARAPET COPING.
- 13 CO2 FILLER VALVE AND COVER. SEE DETAIL 4/A502 SIMILAR.
- 14 EASIWASH EXTERIOR ACCESS PANEL. SEAL AIR & WEATHER TIGHT TO WALL WITH SEALANT TO MATCH ADJACENT EXTERIOR WALL FINISH.
- 15 GAS SERVICE. DO NOT PAINT.
- 16 WALL SHALL BE FINISHED PRIOR TO INSTALLATION OF SWITCHGEAR.
- 17 SCUPPER, COLLECTOR, AND OPEN FACE DOWNSPOUT. PROVIDE WITH FACTORY POWDER COAT OR KYMAR 500 PAINT FINISH - COLOR AS SCHEDULED. (BOTTOM OF DOWNSPOUT TO BE 6'-8" ABOVE GRADE)
- 18 CONCRETE CURB.
- 19 SCENCE LIGHT FIXTURE. SEE ELECTRICAL DRAWINGS.
- 20 METAL AWNING OVER VESTIBULE WINDOW PROVIDED AND INSTALLED BY SIGN VENDOR.
- 21 PANEL SPLICE / TRANSITION TRIM LOCATION.
- 22 EXTERIOR SECURITY CAMERA MOUNTED AT 9'-0" A.F.F. SEE ELEC. DRAWINGS FOR ADDITIONAL INFORMATION.
- 23 BOLLARD. SEE DETAIL 4/A101.
- 24 METAL EYEBROW OVER WINDOWS PROVIDED AND INSTALLED BY SIGN VENDOR.
- 25 WALL PACK LIGHT FIXTURE. SEE ELECTRICAL DRAWINGS.
- 26 NOT USED.
- 27 ADDRESS SIGN. 8" HIGH WHITE VINYL LETTERS APPLIED TO GLASS SURFACE.
- 28 FIRE DEPARTMENT KNOX BOX.
- 29 STOREFRONT DOOR. REFER TO DOOR SCHEDULE.
- 30 HOSE BIBB LOCATION. REFER TO PLUMBING AND DETAIL 19/A502.
- 31 NOT USED.
- 32 DRIVE-THRU CANOPY BY VENDOR.
- 33 EMERGENCY LIGHT FIXTURE WITH BATTERY BACK UP. SEE ELECTRICAL DRAWINGS.
- 34 O.H. DOOR AS SCHEDULED.
- 35 INSULATED HOLLOW METAL DOOR AND FRAME. PAINT TO MATCH WALL.
- 36 ALUMINUM ROOF ACCESS LADDER AND DOOR. (DO NOT PAINT) SEE DETAILS 9, 19 AND 20/A500.
- 37 12"x12" FRESH AIR INTAKE METAL GRILL, PAINT TO MATCH WALL AND SEAL AIR AND WEATHER TIGHT. VERIFY LOCATION. PAINT TO MATCH WALL.
- 38 OVERFLOW SCUPPER. PROVIDE WITH FACTORY POWDER COAT OR KYMAR 500 PAINT FINISH - COLOR AS SCHEDULED. FULLERTON TO PROVIDE OPENING SIZED PER STATE PLUMBING CODE AT HEIGHT NOT TO EXCEED MAXIMUM PONDING WATER FOR WHICH THE ROOF STRUCTURE WAS DESIGNED FOR BY CODE.
- 39 PROVIDE FRAMING AND STRUCTURE AS REQUIRED FOR FUTURE DRIVE-THRU WINDOW AND BLOCKING FOR FUTURE CANOPY. SEE SECTIONS FOR ADDITIONAL INFORMATION.

EXTERIOR ELEVATION KEY NOTES

**PRELIMINARY -
NOT FOR
CONSTRUCTION**

**EXTERIOR
ELEVATIONS**

A300
TACO BELL - RAMSEY, MN

Applicant/Owner:
MARVIN DEVELOPMENT VII, LLC
5425 BOONE AVE. N
NEW HOPE, MINNESOTA 55428

Tenant:
BORDER FOODS, LLC
5425 BOONE AVE. N
NEW HOPE, MINNESOTA 55428

Contact: Zach Zelikson
Phone: 763-489-2968

ENDEAVOR
40 SEATS / 2,867 S.F.

PROJECT NO.: TB25-02

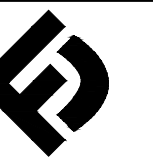
DRAWN BY: KDT

CHECKED BY: GGD

ISSUES AND REVISIONS:

C.U.P./SITE PLAN REVIEW: 04.11.2025

CITY COMMENTS: 05.07.2025

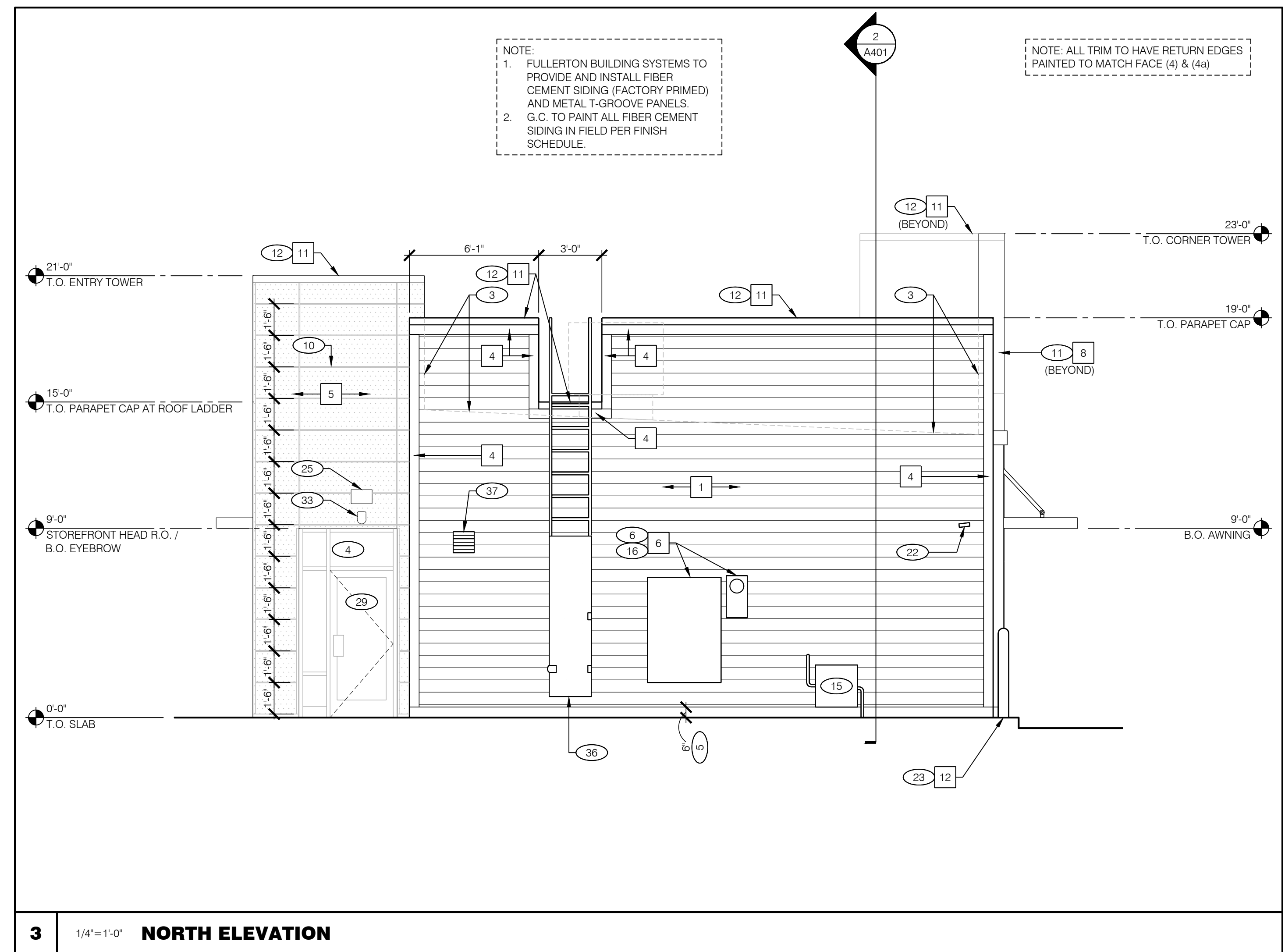
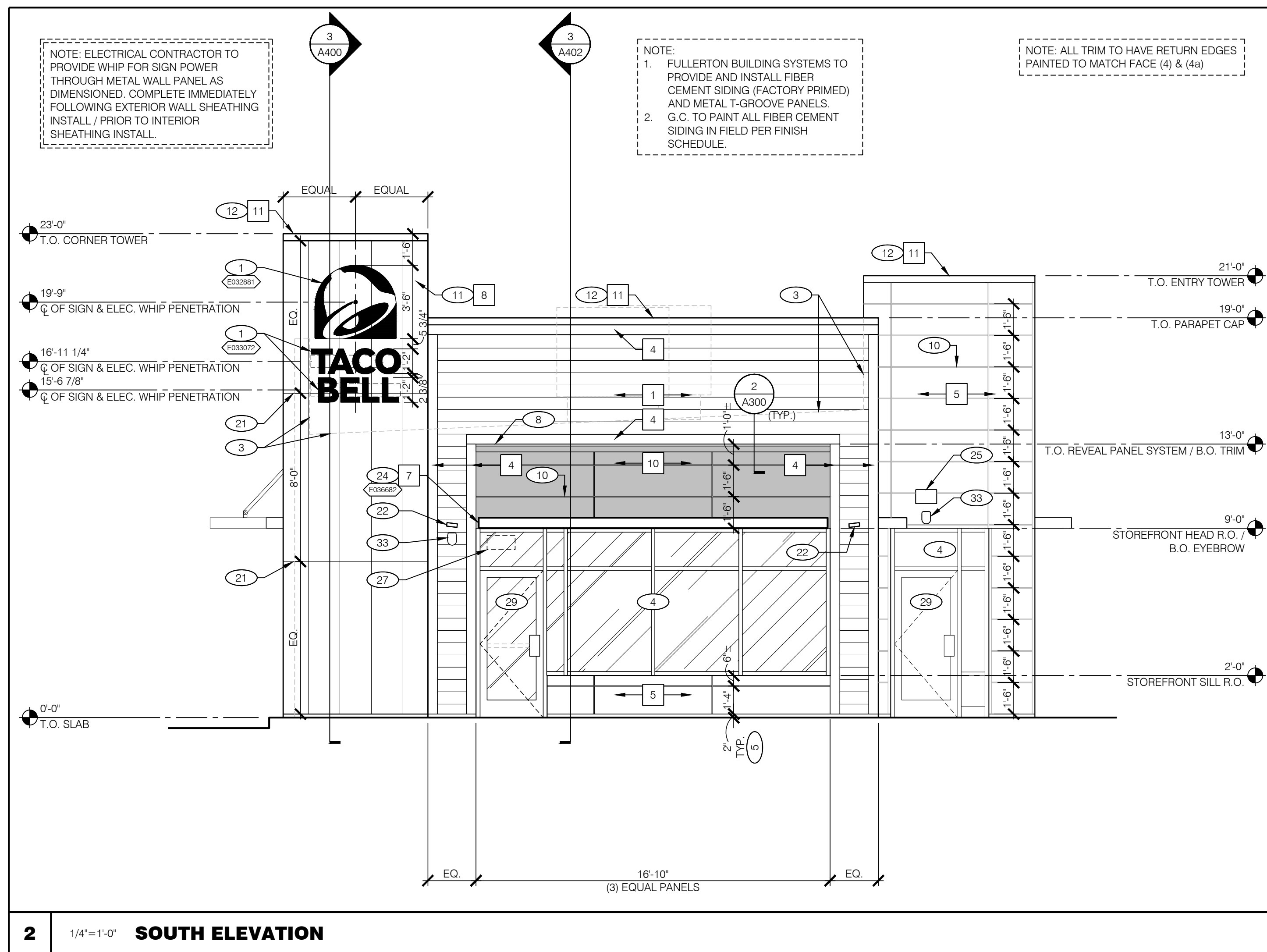
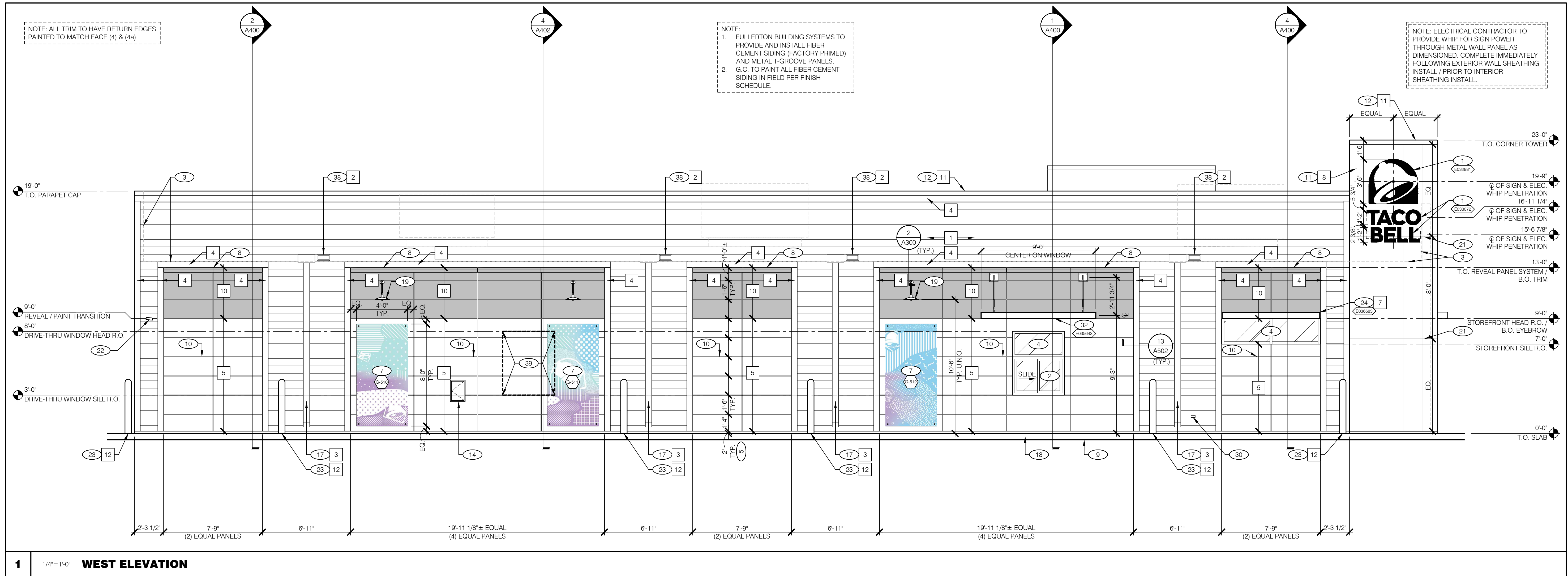


**FINN DANIELS
ARCHITECTS**

1440 Northland Drive, Suite 250
Mendota Heights, MN 55120
651.690.5525 // www.finn-daniels.com



14751 ARMSTRONG BLVD NW
RAMSEY, MN 55303



Applicant/Owner:
MARVIN DEVELOPMENT VII, LLC
5425 BOONE AVE. N
NEW HOPE, MINNESOTA 55428

Tenant:
BORDER FOODS, LLC
5425 BOONE AVE. N
NEW HOPE, MINNESOTA 55428

Contact: Zach Zelickson
Phone: 763-489-2968

ENDEAVOR
40 SEATS / 2,867 S.F.

PROJECT NO.: TB25-02

DRAWN BY: KDT

CHECKED BY: GGD

ISSUES AND REVISIONS:

C.U.P./SITE PLAN REVIEW: 04.11.2025

CITY COMMENTS: 05.07.2025

**PRELIMINARY -
NOT FOR
CONSTRUCTION**

**EXTERIOR
ELEVATIONS**

A301

TACO BELL - RAMSEY, MN

OVERHEAD CANOPY NOTE:

ANCHOR BOLTS, NUTS, AND WASHERS SUPPLIED BY SIGN COMPANY AND INSTALLED BY G.C.

ANCHOR BOLTS ARE SET PERPENDICULAR TO THE CURB

SPEAKER BOX NOTE:

ANCHOR BOLTS, NUTS, AND WASHERS SUPPLIED AND INSTALLED BY G.C.

ANCHOR BOLTS ARE SET PERPENDICULAR TO THE CURB

MENU BOARD NOTE:

ANCHOR BOLTS, NUTS, AND WASHERS SUPPLIED AND INSTALLED BY G.C.

ANCHOR BOLTS ARE SET AT AN ANGLE TO THE CURB

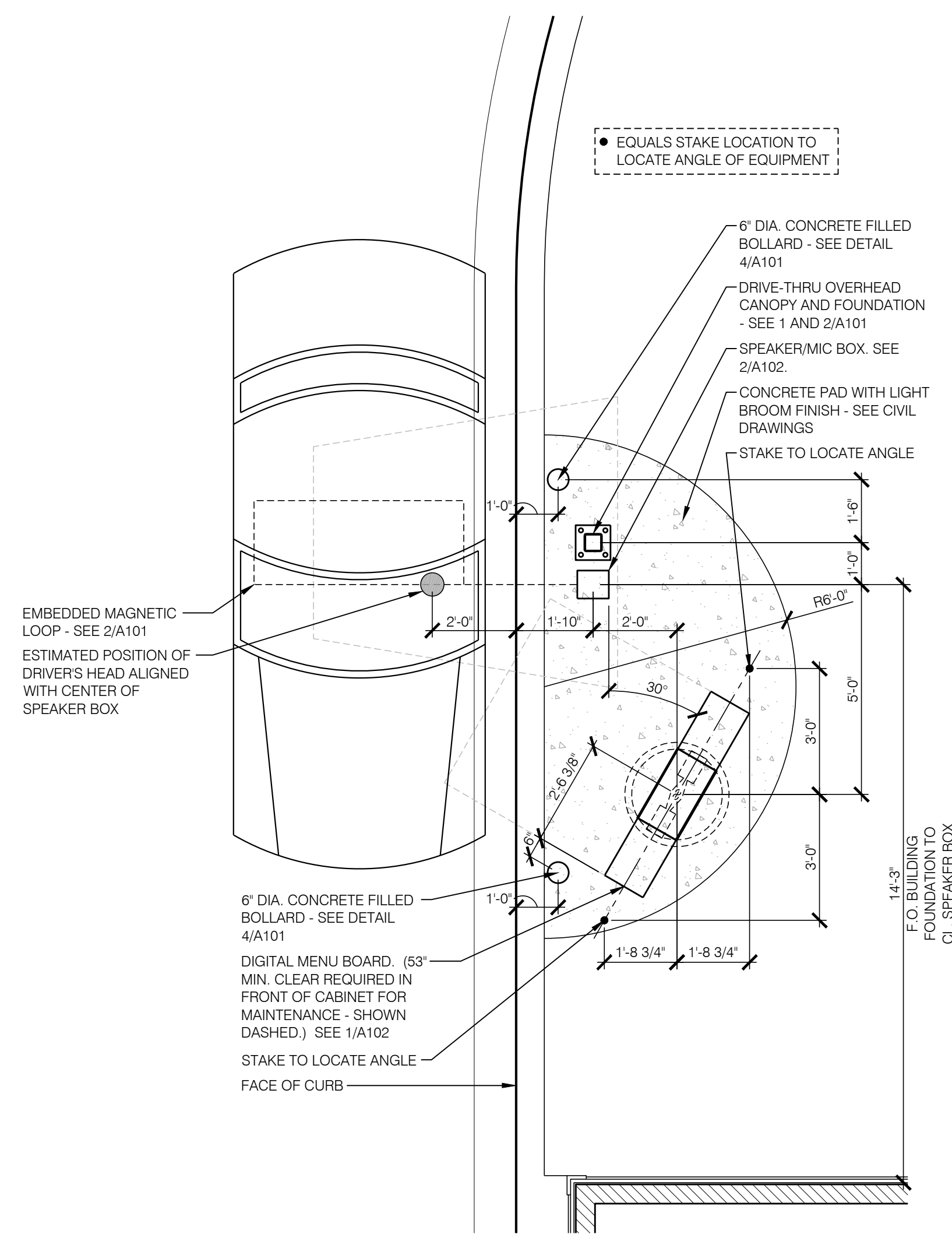
NOTE: PROVIDE 1/2" EXPANSION JOINT MATERIAL & VULKEM SEALANT 1/2" DEEP AROUND ALL CONCRETE EQUIPMENT BASES AND EDGE OF CURB, PRIOR TO POURING SLAB.

NOTE: VERIFY AND COORDINATE FINAL DRIVE-THRU EQUIPMENT LOCATIONS WITH OWNER'S SITE REPRESENTATIVE.

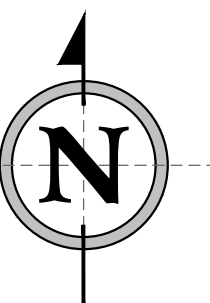
NOTE: PROVIDE EXPANSION JOINTS AND CONTROL JOINTS IN UNIFORM PATTERN.

NOTE: SEE 2/A101 & ELECTRICAL DRAWINGS FOR ROUTING OF CONDUITS AND POWER

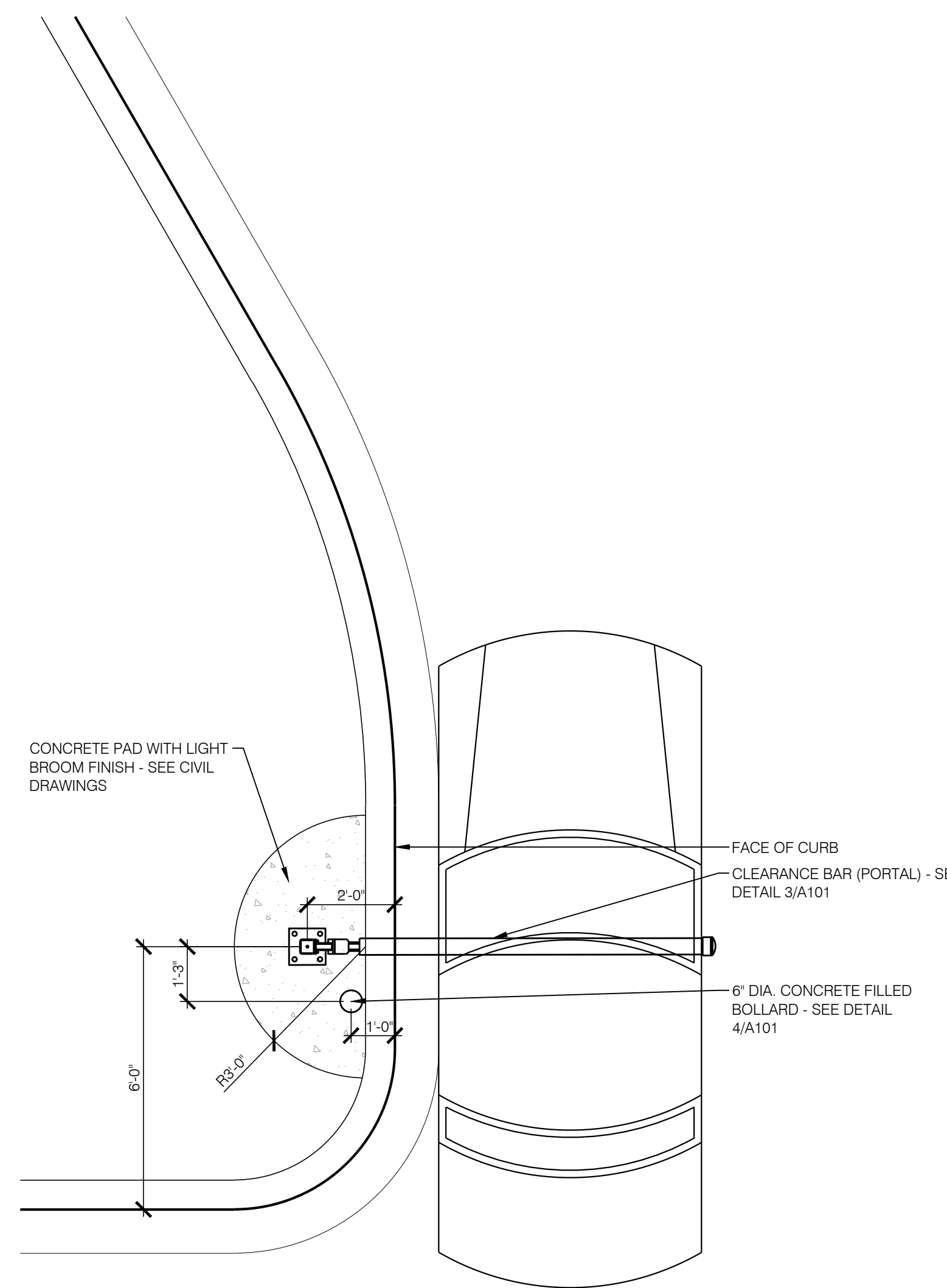
NOTE: TOP OF FOUNDATIONS TO BE LEVEL WITH TOP OF CURB AND TOP OF CONCRETE PAD



RECOMMEND TO CREATE A PLYWOOD TEMPLATE TO LAY OUT DRIVE-THRU ORDER AREA EQUIPMENT (EQUIPMENT AND DIMENSIONS INDICATED ABOVE).



1 3/8"=1'-0" **SPEAKER BOX, CANOPY & MENU BOARD ENLARGED PLAN**

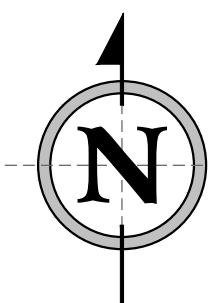


NOTE: PROVIDE 1/2" EXPANSION JOINT MATERIAL & VULKEM SEALANT 1/2" DEEP AROUND ALL CONCRETE EQUIPMENT BASES AND EDGE OF CURB, PRIOR TO POURING SLAB.

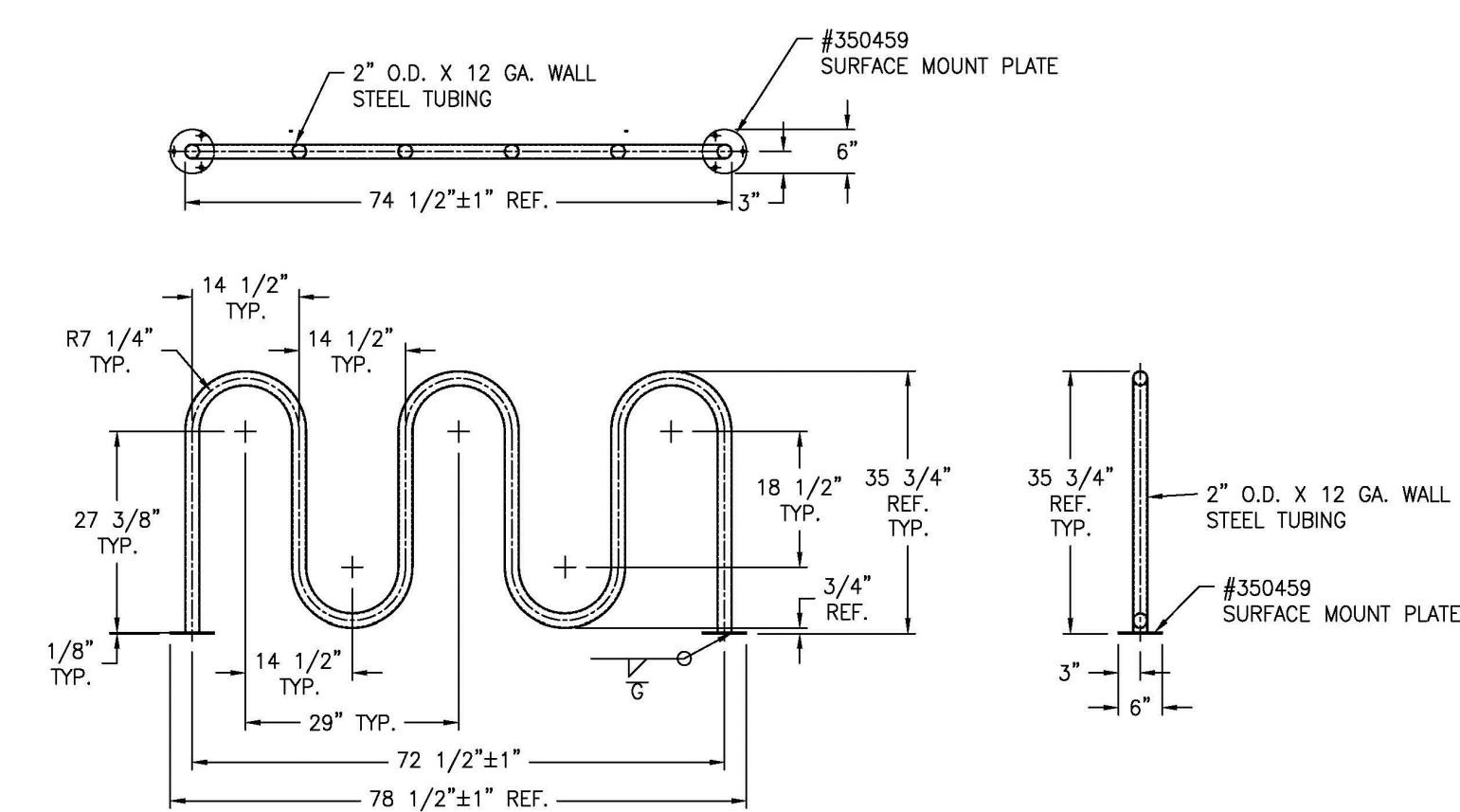
NOTE: VERIFY AND COORDINATE FINAL DRIVE-THRU EQUIPMENT LOCATIONS WITH OWNER'S SITE REPRESENTATIVE.

NOTE: PROVIDE EXPANSION JOINTS AND CONTROL JOINTS IN UNIFORM PATTERN.

NOTE: TOP OF FOUNDATIONS TO BE LEVEL WITH TOP OF CURB AND TOP OF CONCRETE PAD

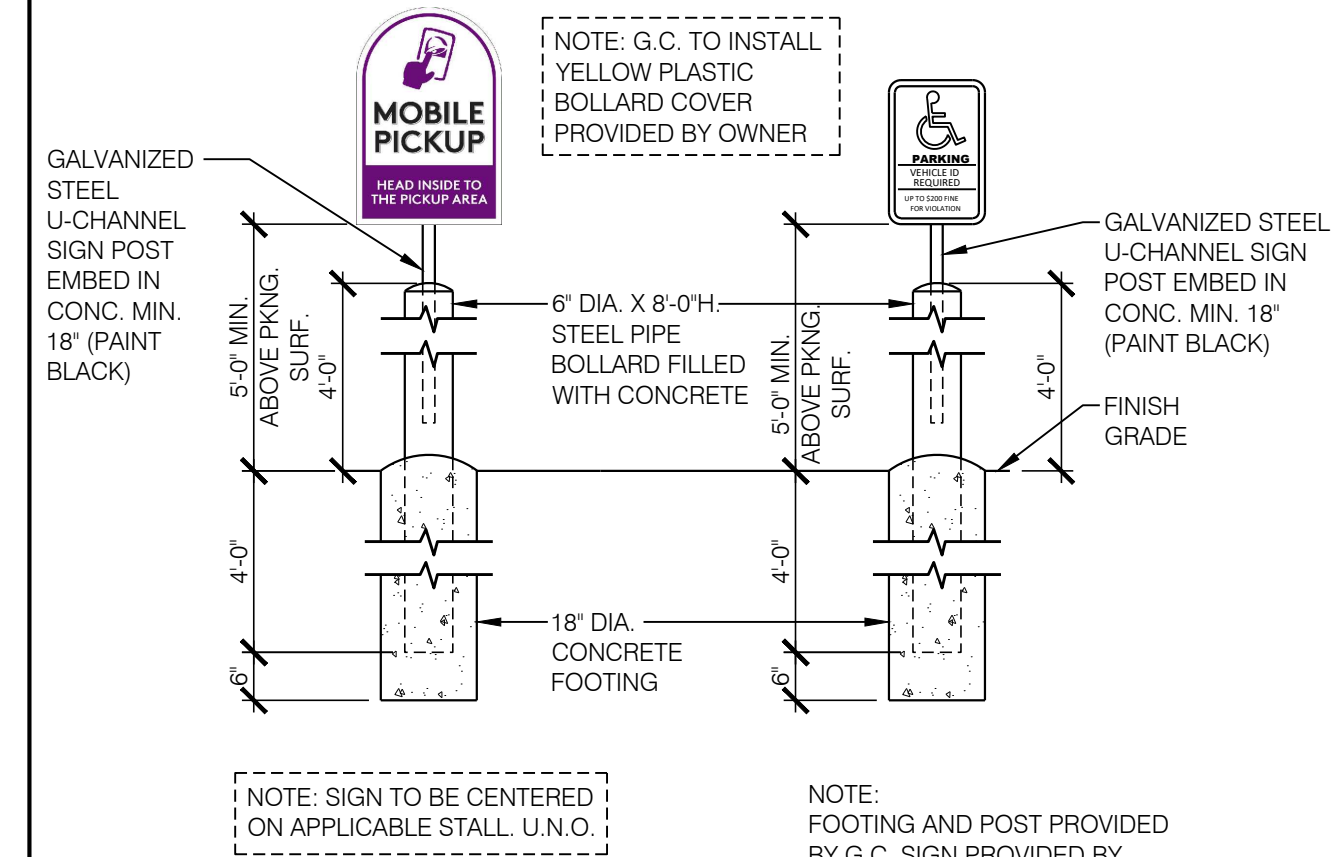


2 3/8"=1'-0" **CLEARANCE BAR ENLARGED PLAN**

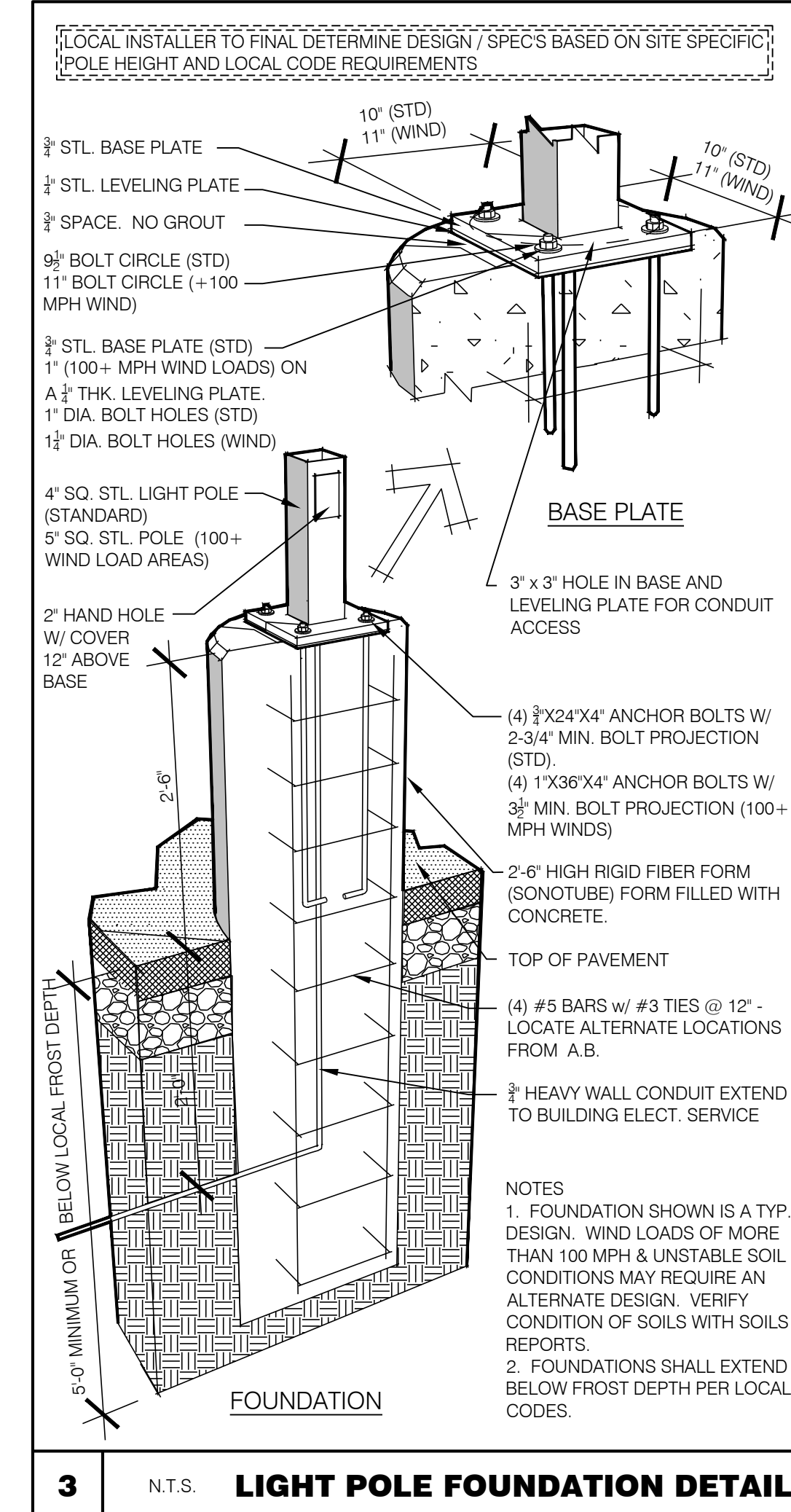


4 N.T.S. **BIKE RACK**

5 **NOT USED**



6 N.T.S. **PARKING STALL SIGN BOLLARD DETAIL**

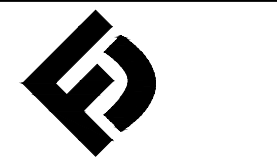


3 N.T.S. **LIGHT POLE FOUNDATION DETAIL**



DESCRIPTION:
Pylon Sign 100 SF
with Drive-Thru
Area: 100 SF

7 N.T.S. **PYLON SIGN**



FINN DANIELS ARCHITECTS

1440 Northland Drive, Suite 250
Mendota Heights, MN 55120
651.690.5525 // www.finn-daniels.com



TACO BELL

14751 ARMSTRONG BLVD NW
RAMSEY, MN 55303

Applicant/Owner:
MARVIN DEVELOPMENT VII, LLC
5425 BOONE AVE. N
NEW HOPE, MINNESOTA 55428

Tenant:
BORDER FOODS, LLC
5425 BOONE AVE. N
NEW HOPE, MINNESOTA 55428

Contact: Zach Zelikson
Phone: 763-489-2968

ENDEAVOR
40 SEATS / 2,867 S.F.

PROJECT NO.: **TB25-02**

DRAWN BY: **KDT**

CHECKED BY: **GGD**

ISSUES AND REVISIONS:

C.U.P./SITE PLAN REVIEW: **04.11.2025**

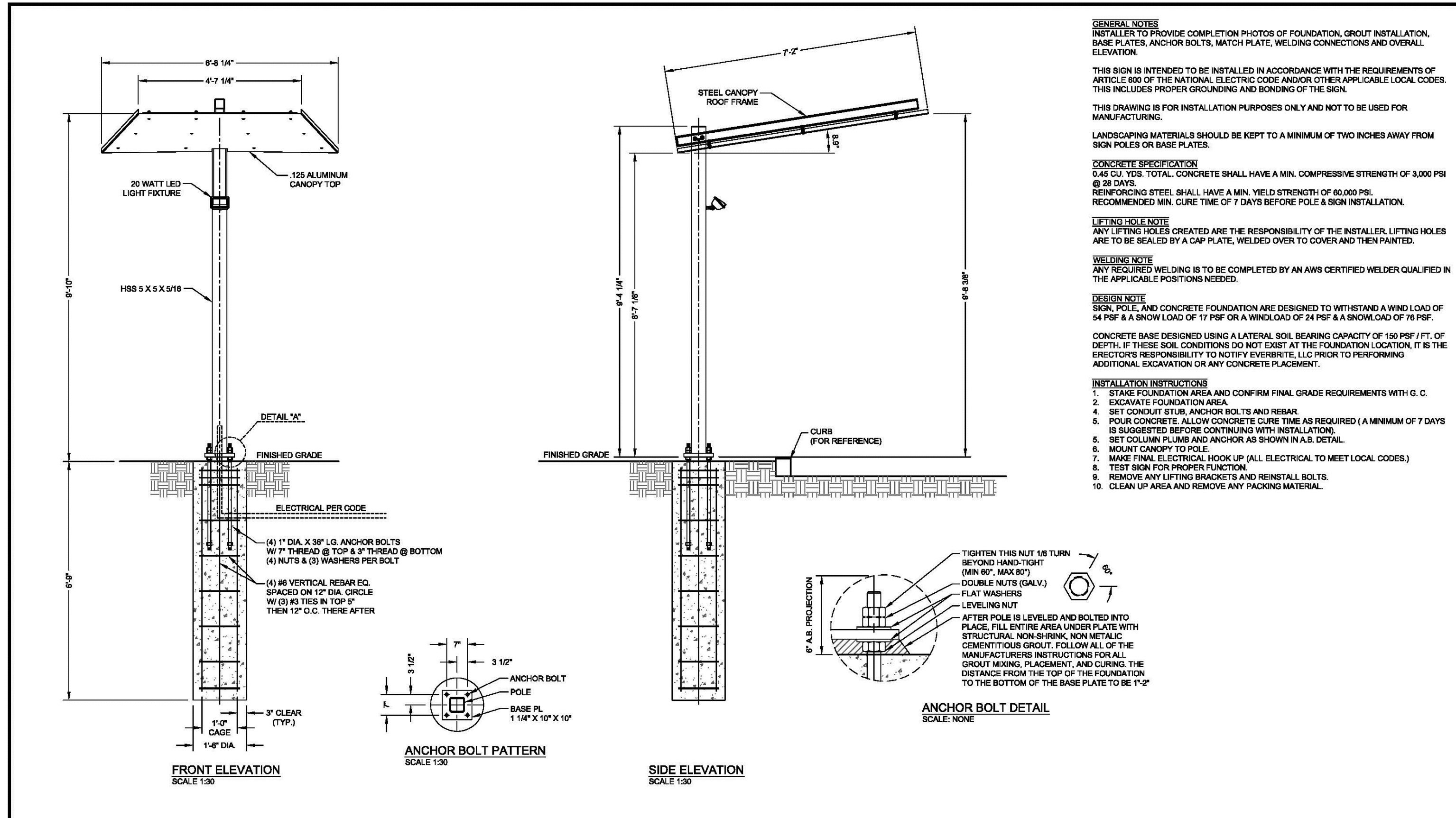
CITY COMMENTS: **05.07.2025**

PRELIMINARY - NOT FOR CONSTRUCTION

SITE DETAILS

A100

TACO BELL - RAMSEY, MN



GENERAL NOTES
 INSTALLER TO PROVIDE COMPLETION PHOTOS OF FOUNDATION, GROUT INSTALLATION, BASE PLATES, ANCHOR BOLTS, WELDING CONNECTIONS AND OVERALL ELEVATION.
 THIS SIGN IS INTENDED TO BE INSTALLED IN ACCORDANCE WITH THE REQUIREMENTS OF ARTICLE 600 OF THE NATIONAL ELECTRICAL CODE AND/OR OTHER APPLICABLE LOCAL CODES. THIS INCLUDES PROPER GROUNDING AND BONDING OF THE SIGN.
 THIS DRAWING IS FOR INSTALLATION PURPOSES ONLY AND NOT TO BE USED FOR MANUFACTURING.
 LANDSCAPING MATERIALS SHOULD BE KEPT TO A MINIMUM OF TWO INCHES AWAY FROM SIGN POLES OR BASE PLATES.

CONCRETE SPECIFICATION
 0.45 CU. YDS. TOTAL. CONCRETE SHALL HAVE A MIN. COMPRESSIVE STRENGTH OF 3,000 PSI @ 28 DAYS.
 REINFORCING STEEL SHALL HAVE A MIN. YIELD STRENGTH OF 60,000 PSI. RECOMMENDED MIN. CURE TIME OF 7 DAYS BEFORE POLE & SIGN INSTALLATION.

LIFTING HOLE NOTE
 ANY LIFTING HOLES CREATED ARE THE RESPONSIBILITY OF THE INSTALLER. LIFTING HOLES ARE TO BE SEALED BY A CAP PLATE, WELDED OVER TO COVER AND THEN PAINTED.

WELDING NOTE
 ANY REQUIRED WELDING IS TO BE COMPLETED BY AN AWS CERTIFIED WELDER QUALIFIED IN THE APPLICABLE POSITIONS NEEDED.

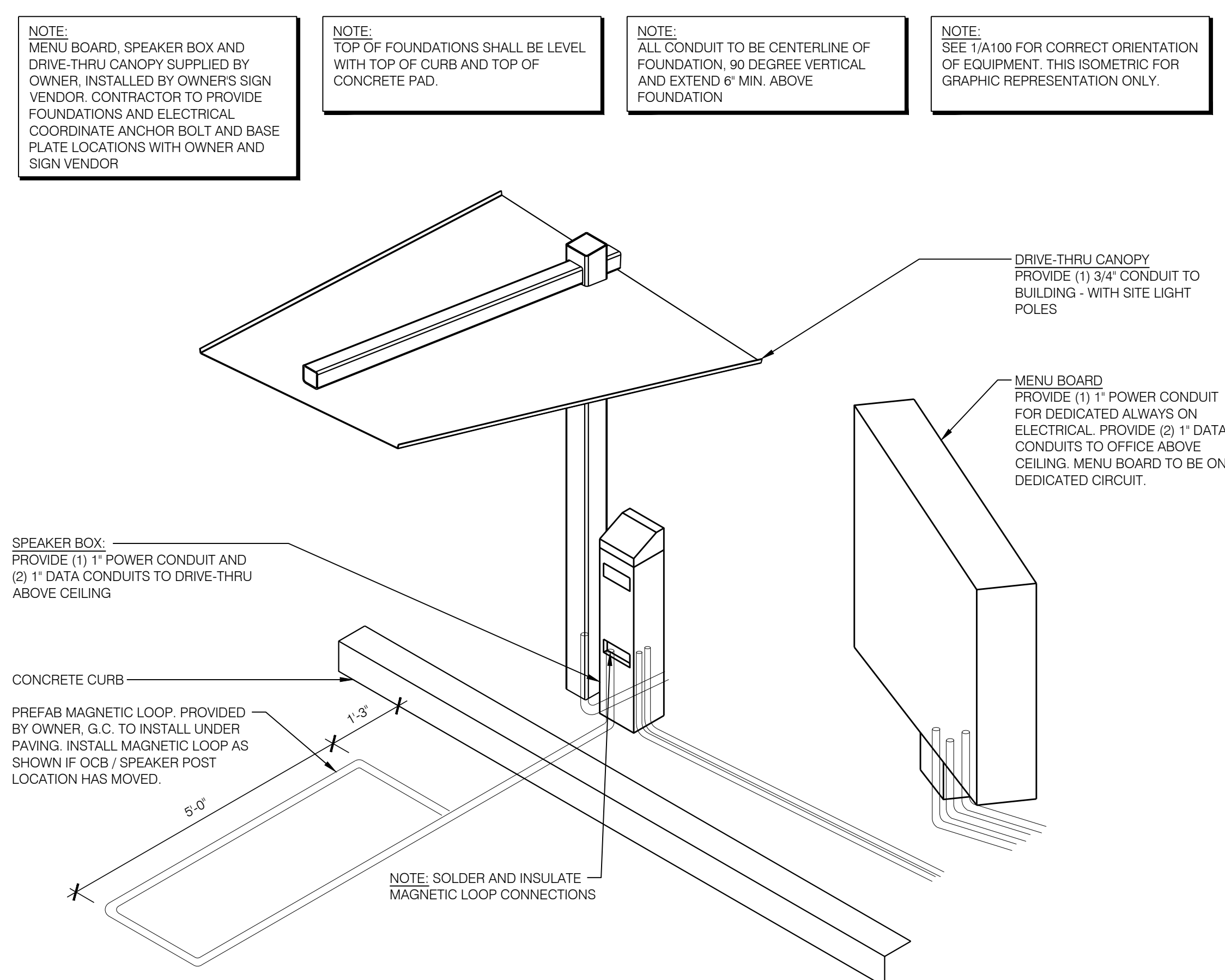
DESIGN NOTE
 SIGN, POLE AND CONCRETE FOUNDATION ARE DESIGNED TO WITHSTAND A WIND LOAD OF 24 PSF & A SNOW LOAD OF 17 PSF OR A WIND LOAD OF 24 PSF & A SNOW LOAD OF 78 PSF. CONCRETE BASE DESIGNED USING A LATERAL SOIL BEARING CAPACITY OF 150 PSF / FT. OF DEPTH. IF THESE SOIL CONDITIONS DO NOT EXIST AT THE FOUNDATION LOCATION, IT IS THE DIRECTOR'S RESPONSIBILITY TO NOTIFY EVERBRITE, LLC PRIOR TO PERFORMING ADDITIONAL EXCAVATION OR ANY CONCRETE PLACEMENT.

INSTALLATION INSTRUCTIONS
 1. STAKE FOUNDATION AREA AND CONFIRM FINAL GRADE REQUIREMENTS WITH G.C.
 2. EXCAVATE FOUNDATION AREA.
 3. SET ANCHOR BOLTS & REBAR.
 4. POUR CONCRETE. ALLOW CONCRETE CURE TIME AS REQUIRED (A MINIMUM OF 7 DAYS IS SUGGESTED BEFORE CONTINUING WITH INSTALLATION).
 5. SET COLUMN PLUMB AND ANCHOR AS SHOWN IN A.S. DETAIL.
 6. MOUNT CANOPY TO POLE.
 7. MAKE FINAL ELECTRICAL HOOK UP (ALL ELECTRICAL TO MEET LOCAL CODES).
 8. TEST SIGN FOR PROPER FUNCTION.
 9. REMOVE ANY LIFTING BRACKETS AND REINSTALL BOLTS.
 10. CLEAN UP AREA AND REMOVE ANY PACKING MATERIAL.

ANCHOR BOLT DETAIL
 SCALE: NONE
 TIGHTEN THIS NUT 1/8 TURN BEYOND HAND-TIGHT (MIN 60" MAX 80")
 DOUBLE NUTS (GALV.)
 FLAT WASHERS
 LEVELING NUT
 AFTER POLE IS LEVELED AND BOLTED INTO PLACE, FILL ENTIRE AREA UNDER PLATE WITH STRUCTURAL NON-SHRINK, NON METALLIC GEMENTIOUS GROUT. FOLLOW ALL OF THE MANUFACTURERS INSTRUCTIONS FOR ALL GROUT MIXING, PLACEMENT, AND CURING. THE DISTANCE FROM THE TOP OF THE FOUNDATION TO THE BOTTOM OF THE BASE PLATE TO BE 1'-2"

<p>Everbrite 4949 SO. 110TH ST. P.O. BOX 20020 GREENFIELD, WI 53220 414-529-3500</p>	INSTALLATION DRAWING		DRAWN BY: SAJ	SITE:	STANDARD DRAWING TITLE: TACO BELL VE DRIVE THRU CANOPY w/o SHROUD @ 10'-0" OAH PROJECT NO. 352776 DRAWING NO. IN352776P REV A									
	THESE DRAWINGS ARE THE EXCLUSIVE PROPERTY OF EVERBRITE, LLC. USE OF OR DUPLICATION IN ANY MANNER WITHOUT EXPRESS WRITTEN PERMISSION OF EVERBRITE, LLC IS PROHIBITED.		DATE: 10-27-16	CHECKED BY: RHB										
<table border="1"> <thead> <tr> <th>REV</th> <th>DATE</th> <th>BY</th> <th>CHK</th> <th>DESCRIPTION</th> </tr> </thead> <tbody> <tr> <td>A</td> <td>10-27-16</td> <td>SAJ</td> <td>RHB</td> <td>RELEASED FOR INSTALLATION</td> </tr> </tbody> </table>		REV	DATE	BY	CHK	DESCRIPTION	A	10-27-16	SAJ	RHB	RELEASED FOR INSTALLATION	DATE: 10-27-16	SCALE: AS SHOWN	REF:
REV	DATE	BY	CHK	DESCRIPTION										
A	10-27-16	SAJ	RHB	RELEASED FOR INSTALLATION										

1 N.T.S. DRIVE-THRU CANOPY



NOTE: MENU BOARD, SPEAKER BOX AND DRIVE-THRU CANOPY SUPPLIED BY OWNER. INSTALLED BY OWNER'S SIGN VENDOR. CONTRACTOR TO PROVIDE FOUNDATIONS AND ELECTRICAL COORDINATE ANCHOR BOLT AND BASE PLATE LOCATIONS WITH OWNER AND SIGN VENDOR

NOTE: TOP OF FOUNDATIONS SHALL BE LEVEL WITH TOP OF CURB AND TOP OF CONCRETE PAD.

NOTE: ALL CONDUIT TO BE CENTERLINE OF FOUNDATION, 90 DEGREE VERTICAL AND EXTEND 6" MIN. ABOVE FOUNDATION

NOTE: SEE 1/A100 FOR CORRECT ORIENTATION OF EQUIPMENT. THIS ISOMETRIC FOR GRAPHIC REPRESENTATION ONLY.

DRIVE-THRU CANOPY
 PROVIDE (1) 3/4" CONDUIT TO BUILDING - WITH SITE LIGHT POLES

MENU BOARD
 PROVIDE (1) 1" POWER CONDUIT FOR DEDICATED ALWAYS ON ELECTRICAL. PROVIDE (2) 1" DATA CONDUITS TO OFFICE ABOVE CEILING. MENU BOARD TO BE ON DEDICATED CIRCUIT.

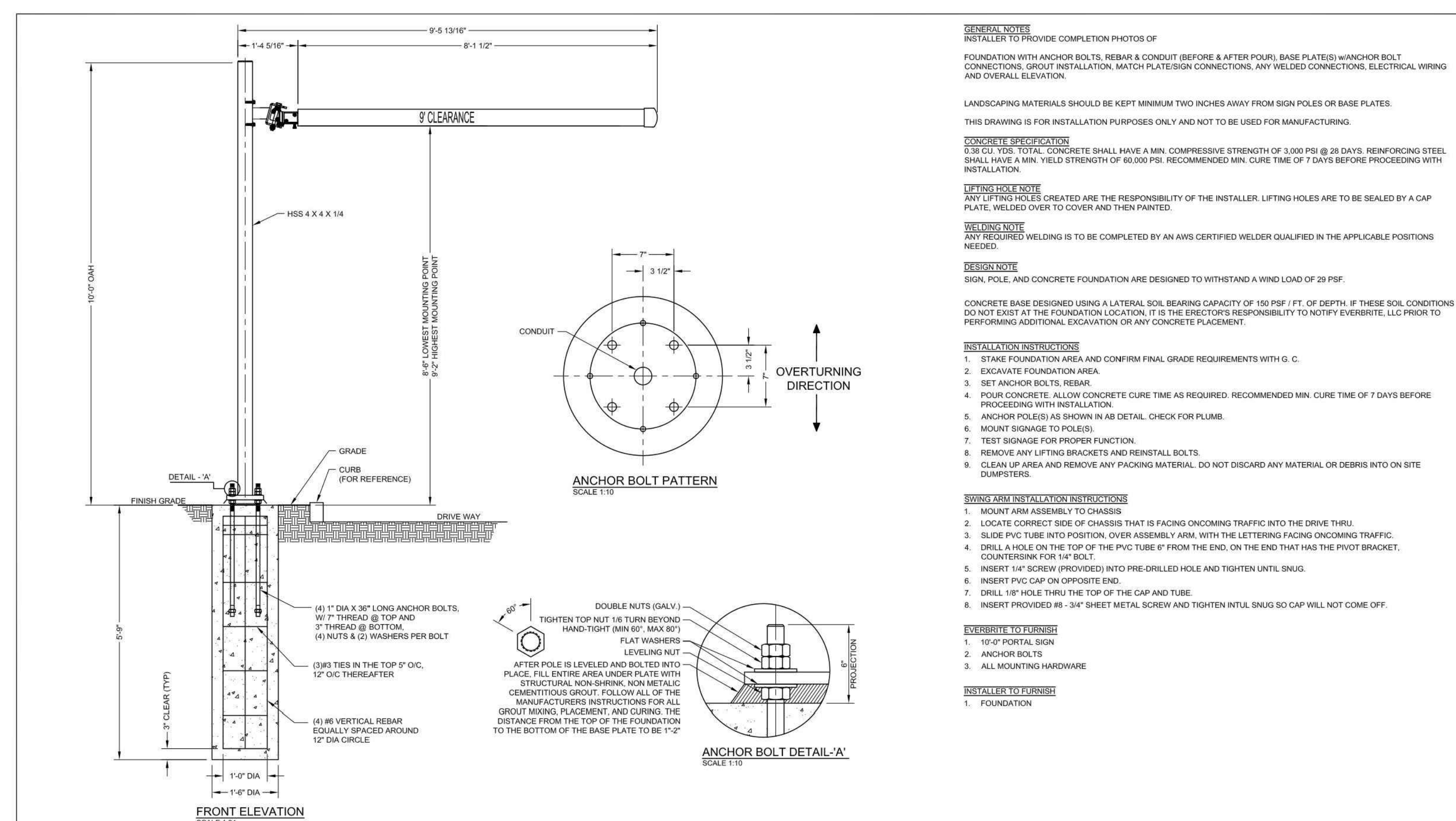
SPEAKER BOX:
 PROVIDE (1) 1" POWER CONDUIT AND (2) 1" DATA CONDUITS TO DRIVE-THRU ABOVE CEILING

PREFAB MAGNETIC LOOP, PROVIDED BY OWNER, G.C. TO INSTALL UNDER PAVING. INSTALL MAGNETIC LOOP AS SHOWN IF OCB / SPEAKER POST LOCATION HAS MOVED.

NOTE: SOLDER AND INSULATE MAGNETIC LOOP CONNECTIONS

NOTE: SEE ALSO ELECTRICAL DRAWINGS FOR POWER AND P.O.S. LOW VOLTAGE AND COORDINATE

2 N.T.S. DRIVE-THRU COMMUNICATIONS ISOMETRIC



GENERAL NOTES
 INSTALLER TO PROVIDE COMPLETION PHOTOS OF FOUNDATION WITH ANCHOR BOLTS, REBAR & CONDUIT (BEFORE & AFTER POUR), BASE PLATES, ANCHOR BOLT CONNECTIONS, GROUT INSTALLATION, MATCH PLATE/SIGN CONNECTIONS, ANY WELDED CONNECTIONS, ELECTRICAL WIRING AND OVERALL ELEVATION.

LANDSCAPING MATERIALS SHOULD BE KEPT MINIMUM TWO INCHES AWAY FROM SIGN POLES OR BASE PLATES.
 THIS DRAWING IS FOR INSTALLATION PURPOSES ONLY AND NOT TO BE USED FOR MANUFACTURING.

CONCRETE SPECIFICATION
 0.38 CU. YDS. TOTAL. CONCRETE SHALL HAVE A MIN. COMPRESSIVE STRENGTH OF 3,000 PSI @ 28 DAYS. REINFORCING STEEL SHALL HAVE A MIN. YIELD STRENGTH OF 60,000 PSI. RECOMMENDED MIN. CURE TIME OF 7 DAYS BEFORE PROCEEDING WITH INSTALLATION.

LIFTING HOLE NOTE
 ANY LIFTING HOLES CREATED ARE THE RESPONSIBILITY OF THE INSTALLER. LIFTING HOLES ARE TO BE SEALED BY A CAP PLATE, WELDED OVER TO COVER AND THEN PAINTED.

WELDING NOTE
 ANY REQUIRED WELDING IS TO BE COMPLETED BY AN AWS CERTIFIED WELDER QUALIFIED IN THE APPLICABLE POSITIONS NEEDED.

DESIGN NOTE
 SIGN, POLE AND CONCRETE FOUNDATION ARE DESIGNED TO WITHSTAND A WIND LOAD OF 29 PSF. CONCRETE BASE DESIGNED USING A LATERAL SOIL BEARING CAPACITY OF 150 PSF / FT. OF DEPTH. IF THESE SOIL CONDITIONS DO NOT EXIST AT THE FOUNDATION LOCATION, IT IS THE DIRECTOR'S RESPONSIBILITY TO NOTIFY EVERBRITE, LLC PRIOR TO PERFORMING ADDITIONAL EXCAVATION OR ANY CONCRETE PLACEMENT.

INSTALLATION INSTRUCTIONS
 1. STAKE FOUNDATION AREA AND CONFIRM FINAL GRADE REQUIREMENTS WITH G.C.
 2. EXCAVATE FOUNDATION AREA.
 3. SET ANCHOR BOLTS & REBAR.
 4. POUR CONCRETE. ALLOW CONCRETE CURE TIME AS REQUIRED. RECOMMENDED MIN. CURE TIME OF 7 DAYS BEFORE PROCEEDING WITH INSTALLATION.
 5. ANCHOR POLES AS SHOWN IN A.S. DETAIL. CHECK FOR PLUMB.
 6. MOUNT SIGNAGE TO POLES.
 7. TEST SIGNAGE FOR PROPER FUNCTION.
 8. REMOVE ANY LIFTING BRACKETS AND REINSTALL BOLTS.
 9. CLEAN UP AREA AND REMOVE ANY PACKING MATERIAL. DO NOT DISCARD ANY MATERIAL OR DEBRIS INTO ON SITE DUMPSTERS.

SWING ARM INSTALLATION INSTRUCTIONS
 1. MOUNT ARM ASSEMBLY TO CHASSIS
 2. LOCATE CORRECT SIDE OF CHASSIS THAT IS FACING ONCOMING TRAFFIC INTO THE DRIVE THRU
 3. SLIDE PVC TUBE INTO POSITION, OVER ASSEMBLY ARM, WITH THE LETTERING FACING ONCOMING TRAFFIC.
 4. DRILL A HOLE ON THE TOP OF THE PVC TUBE 6" FROM THE END, ON THE END THAT HAS THE PIVOT BRACKET, COUNTERSINK FOR 1/4" BOLT
 5. INSERT 1/4" SCREW (PROVIDED) INTO PRE-DRILLED HOLE AND TIGHTEN UNTIL SNUG.
 6. INSERT PVC CAP ON OPPOSITE END.
 7. DRILL 1/8" HOLE THRU THE TOP OF THE CAP AND TIGHTEN UNTIL SNUG SO CAP WILL NOT COME OFF.
 8. INSERT PROVIDED #8 - 3/4" SHEET METAL SCREW AND TIGHTEN UNTIL SNUG SO CAP WILL NOT COME OFF.

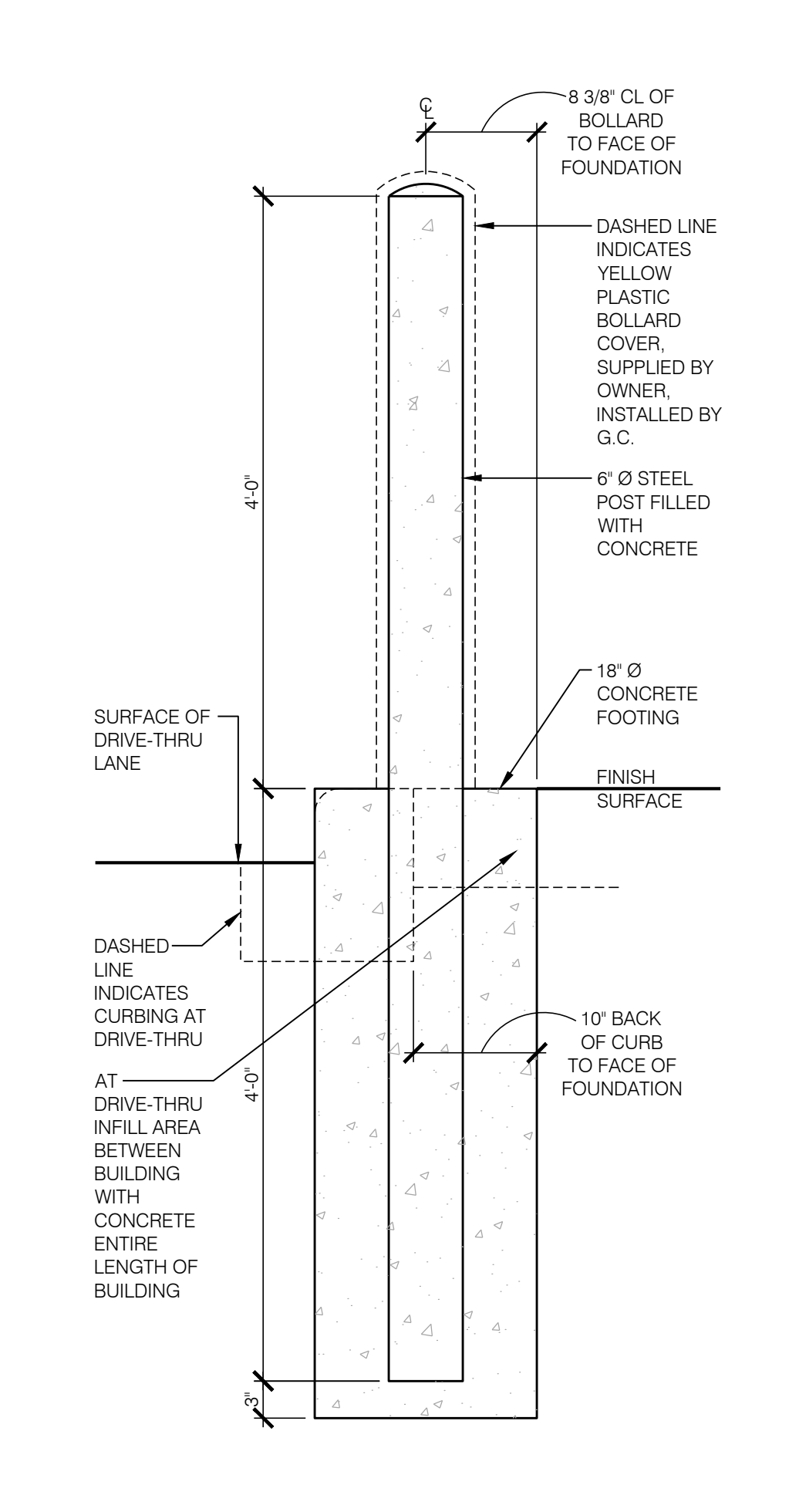
EVERBRITE TO FURNISH
 1. 18'-0" PORTAL SIGN
 2. ANCHOR BOLTS
 3. ALL MOUNTING HARDWARE

INSTALLER TO FURNISH
 1. FOUNDATION

ANCHOR BOLT DETAIL 'A'
 SCALE: 1:10
 DOUBLE NUTS (GALV.)
 TIGHTEN TOP NUT 1/8 TURN BEYOND HAND-TIGHT (MIN 60" MAX 80")
 FLAT WASHERS
 LEVELING NUT
 AFTER POLE IS LEVELED AND BOLTED INTO PLACE, FILL ENTIRE AREA UNDER PLATE WITH STRUCTURAL NON-SHRINK, NON METALLIC GEMENTIOUS GROUT. FOLLOW ALL OF THE MANUFACTURERS INSTRUCTIONS FOR ALL GROUT MIXING, PLACEMENT, AND CURING. THE DISTANCE FROM THE TOP OF THE FOUNDATION TO THE BOTTOM OF THE BASE PLATE TO BE 1'-2"

<p>Everbrite 4949 SO. 110TH ST. P.O. BOX 20020 GREENFIELD, WI 53220 414-529-3500</p>	INSTALLATION DRAWING		DRAWN BY: IMPACT-TDT	SITE:	STANDARD DRAWING TITLE: TACO BELL 10' PORTAL @ 10'-0" OAH PROJECT NO. 360665 DRAWING NO. IN360665B REV A									
	THESE DRAWINGS ARE THE EXCLUSIVE PROPERTY OF EVERBRITE, LLC. USE OF OR DUPLICATION IN ANY MANNER WITHOUT EXPRESS WRITTEN PERMISSION OF EVERBRITE, INC. IS PROHIBITED.		DATE: 03/24/17	CHECKED BY: RHB										
<table border="1"> <thead> <tr> <th>REV</th> <th>DATE</th> <th>BY</th> <th>CHK</th> <th>DESCRIPTION</th> </tr> </thead> <tbody> <tr> <td>A</td> <td>03/27/17</td> <td>RHB</td> <td>RHB</td> <td>RELEASED FOR INSTALLATION</td> </tr> </tbody> </table>		REV	DATE	BY	CHK	DESCRIPTION	A	03/27/17	RHB	RHB	RELEASED FOR INSTALLATION	DATE: 03/27/17	SCALE: AS SHOWN	REF:
REV	DATE	BY	CHK	DESCRIPTION										
A	03/27/17	RHB	RHB	RELEASED FOR INSTALLATION										

3 N.T.S. CLEARANCE BAR (PORTAL)



4 1'-10" BOLLARD DETAIL



5 NOT USED

PRELIMINARY - NOT FOR CONSTRUCTION

GENERAL NOTES:

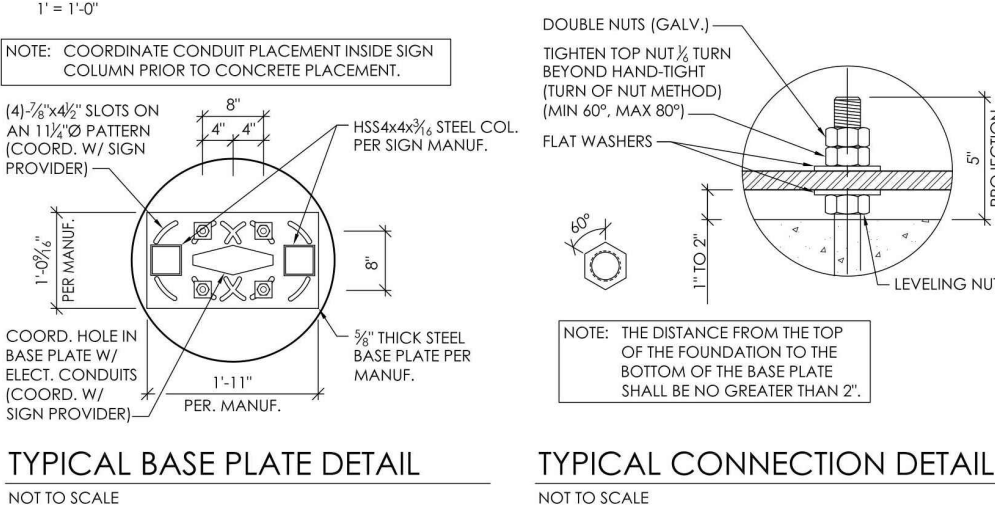
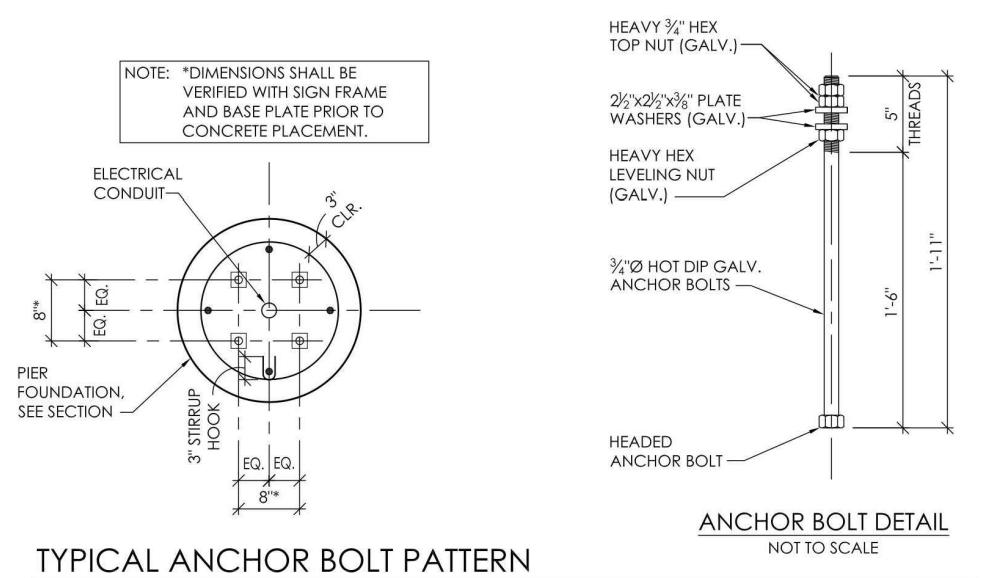
- THE FOLLOWING CODES WERE USED IN DESIGN:
MINNESOTA BUILDING CODE-BCR AND ASCE 7-10(10) - 2020 MINNESOTA STATE BUILDING CODE
- STRUCTURAL LOADINGS:
WIND (3 SECOND GUST):
WIND SPEED: $V_{100} = 115$ MPH
WIND DIRECTION: $V_{100} = 100$ MPH
EXPOSURE: C
RISK CATEGORY: II
WIND BASE SHEAR: $V_e = 400$ LBS (PRE-SELL BOARD)
 $V_e = 700$ LBS (MENU BOARD)
- SEISMIC:
SEISMIC IMPORTANCE FACTOR (I_m): 1.0
ADAPTED SPECTRAL RESPONSE ACCELERATIONS (S_a): 0.0XXg
DESIGN SPECTRAL RESPONSE ACCELERATIONS (S_d): 0.0XXg
SITE CLASS: D
SEISMIC DESIGN CATEGORY: B
SEISMIC RESPONSE COEFFICIENT (C_s): 0.0XX
COMPONENT RESPONSE MODIFICATION FACTOR (R_c): 1.5
SEISMIC DESIGN FORCE (F_s): 0.0XX KIPS (MENU BOARD)
FROST DEPTH: 3'-0"
- ALL FOOTING EXCAVATIONS ARE TO BE CLEAR OF WATER AND FOREIGN MATTER BEFORE PLACING CONCRETE.
- PRESUMPTIVE MINIMUM ALLOWABLE LATERAL SOIL BEARING PRESSURE (S_b) OF 150 PSF. CONTRACTOR SHALL HIRE A GEOTECHNICAL ENGINEER TO CONFORM AN ALLOWABLE BEARING PRESSURE (S_b) OF 150 PSF AND SHALL SUBMIT GEOTECHNICAL REPORT TO ARCHITECT AND STRUCTURAL ENGINEER OF RECORD. ALLOWABLE BEARING PRESSURE SHALL BE VERIFIED PRIOR TO CONCRETE PLACEMENT.
- FOUNDATION SHALL NOT BE PLACED ON OR AT THE TOP OF A SLOPE EXCEEDING 3:1 WITHOUT EVALUATION BY A PROFESSIONAL LICENSED IN THAT STATE. DO NOT PLACE FOUNDATION IN FILL MATERIAL.
- DEPTH OF PIER FOUNDATIONS MAY BE LOWERED IF NEEDED TO OBTAIN LOCAL FROST DEPTH ELEVATIONS OR IF REQUIRED DUE TO POOR SOIL CONDITIONS. VERIFY FROST DEPTH ELEVATIONS WITH LOCAL CODE OFFICIAL.
- ELECTRICAL CONTRACTOR TO PROVIDE INFORMATION ON CONDUIT AND ELECTRICAL REQUIREMENTS AND CONTRACTOR (INSTALLER) SHALL COORDINATE PLACEMENT TO MAINTAIN 7" CLEAR TO ANCHOR BOLTS.
- COORDINATE LOCATIONS OF SIGNS AND FOUNDATIONS WITH SITE PLAN.
- CONTRACTOR SHALL CUT EXCESS NOTUBES FROM AROUND THE PERIMETER OF THE PIER FOUNDATION AFTER PLACEMENT OF BOARD (PRIOR TO LEAVING SITE).
- CONTRACTOR SHALL NOT DEVIATE FROM STRUCTURAL DRAWING WITHOUT PRIOR WRITTEN CONSENT AND INSTRUCTIONS REGARDING ANY CHANGES. ANY DEVIATION FROM THE DESIGN OR FROM ANY PART OF THE DRAWINGS WITHOUT PRIOR WRITTEN CONSENT OF THIS ENGINEER SHALL VOID ALL LIABILITY ASSOCIATED WITH THIS WORK.
- SPECIAL INSPECTIONS ARE NOT REQUIRED FOR THESE SIGN FOUNDATIONS.

CONCRETE NOTES:

- ALL FOOTINGS SHALL BEAR ON FIRM UNDISTURBED RESIDUAL SOIL AND/OR ENGINEERED EARTH FILL COMPACTED TO 95% OF (B) MAXIMUM DRY DENSITY AS PER ASTM D998 (STANDARD PROCTOR) UNLESS NOTED OTHERWISE. A LICENSED GEOTECHNICAL ENGINEER SHALL CONFIRM SOIL CAPACITY PRIOR TO CONCRETE PLACEMENT.
- ALL PIERS TO EXTEND TO FROST DEPTH AS DETERMINED BY LOCAL JURISDICTION. VERIFY WITH LOCAL BUILDING OFFICIAL.
- TOP OF PIERS SHALL BE SLOPED SUCH THAT MOISTURE CANNOT ACCUMULATE.
- ALL CONCRETE CONSTRUCTION SHALL BE IN ACCORDANCE WITH ACI 301 "STRUCTURAL CONCRETE FOR BUILDINGS" AND ACI 318 "BUILDING CODE REQUIREMENTS FOR REINFORCED CONCRETE."
- ALL CAST-IN-PLACE CONCRETE SHALL ATTAIN AN ULTIMATE COMPRESSIVE STRENGTH (F_c) OF 3000 PSI AT AN AGE OF 28 DAYS UNLESS OTHERWISE NOTED.
- ALL REINFORCING STEEL SHALL BE ASTM A15, GRADE 60 DEFORMED BARS, UNLESS OTHERWISE NOTED.
- CONCRETE PROTECTION FOR REINFORCING AS WELL AS PLACING AND FABRICATION OF REINFORCING SHALL BE IN ACCORDANCE WITH THE "THE AMERICAN CONCRETE INSTITUTE BUILDING CODE REQUIREMENTS" (ACI 318).
- ALL CAST-IN-PLACE CONCRETE SHALL BE AIR-ENTRAINED TO 6% (100%) WATER/CEMENT RATIO SHALL NOT EXCEED 0.48.
- THE MINIMUM CONCRETE COVER FOR THE PROTECTION OF REINFORCEMENT SHALL BE AS NOTED.
- BEFORE PLACING CONCRETE, ALL EMBEDDED ITEMS SHALL BE PROPERLY PLACED, ACCURATELY POSITIONED, AND MAINTAINED SECURELY IN PLACE. NO "WET SETTING" IS ALLOWED.
- AGGREGATES IN NORMAL WEIGHT CONCRETE SHALL CONFORM TO ASTM C-33 (HARDROCK).
- PORTLAND CEMENT SHALL BE TYPE I FOR ALL CONCRETE CONFORMING TO ASTM C150, LOW ALKALI.
- FLY ASH OR OTHER FILLERS CONFORMING TO ASTM C618 CLASS N OR F MAY BE USED AS A PARTIAL SUBSTITUTION FOR PORTLAND CEMENT UP TO A MAXIMUM OF 25% TOTAL. COMBUSTIBLE MATERIALS BE HEAVY IF THE MIX DESIGN IS PROPORTIONED PER ACI 318, SECTION 5.3. CONTRACTOR SHALL FORWARD DESIGN MIX TO ARCHITECT AND STRUCTURAL ENGINEER OF RECORD.
- CONCRETE MIXING OPERATIONS, ETC. SHALL CONFORM TO ASTM C94.
- DO NOT USE ANY CONCRETE OR GROUT CONTAINING CHLORIDES. WATER USED IN MIX SHALL BE CLEAN AND POTABLE.

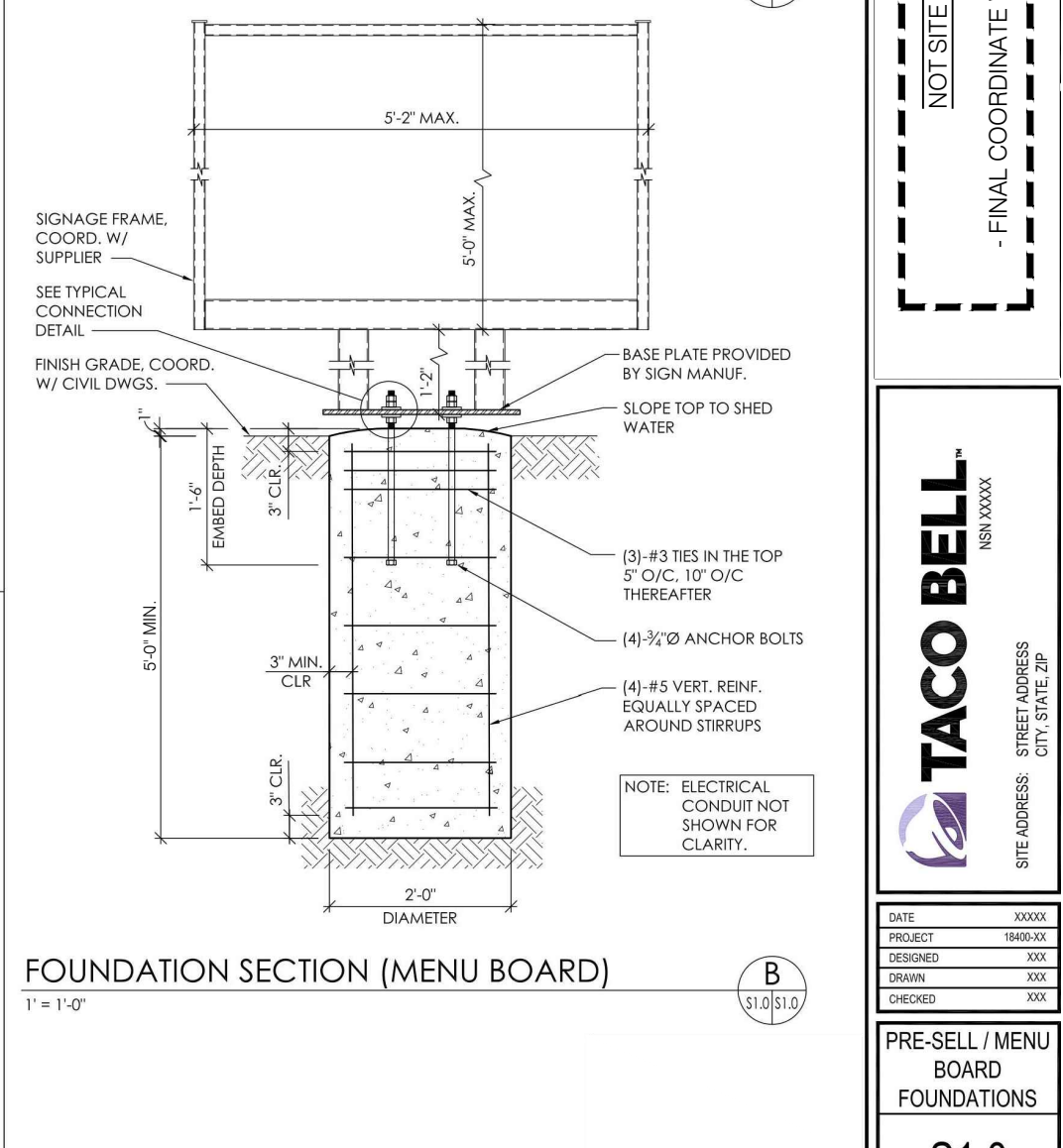
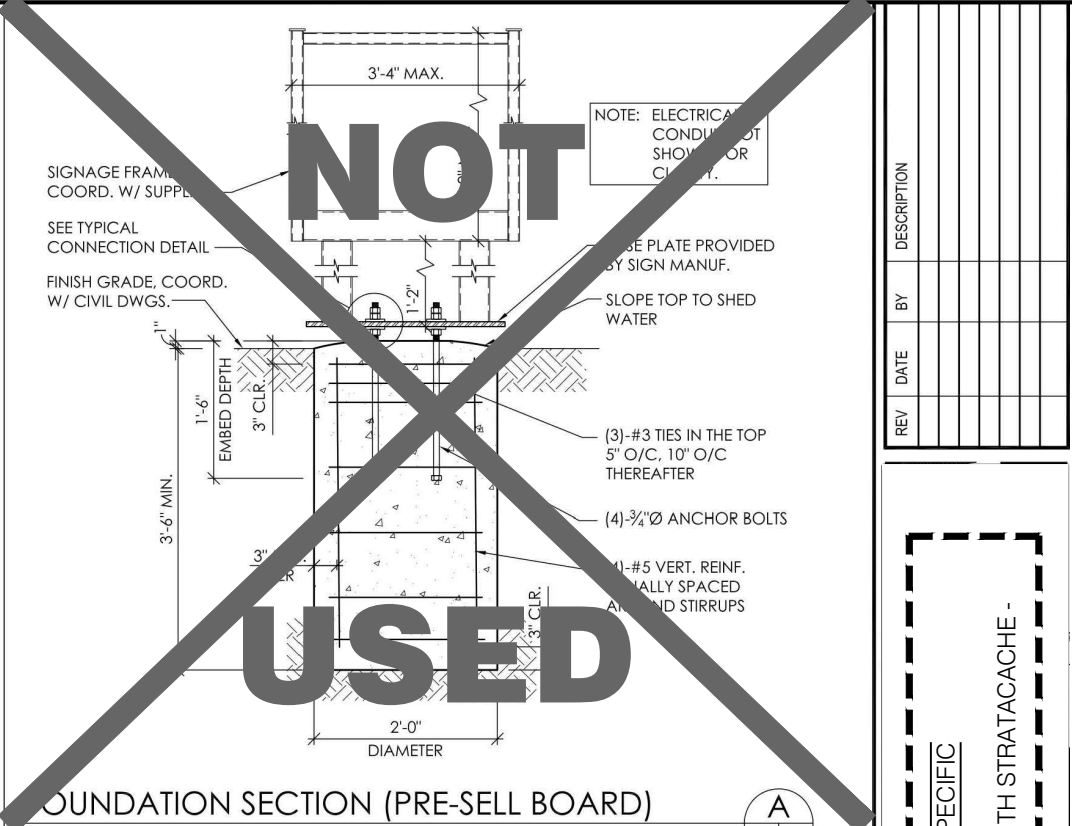
ANCHOR BOLT, NUT AND WASHER NOTES:

- TOP OF PIERS SHALL BE SLOPED SUCH THAT MOISTURE CANNOT ACCUMULATE ON TOP OF FOUNDATION.
- USE F1554 GRADE 36 BOLTS MINIMUM.
- USE HOT DIP GALVANIZED BOLTS IN ACCORDANCE WITH ASTM A-123.
- ANCHOR BOLTS TO BE SET IN ACCORDANCE WITH ASBC CODE OF STANDARD PRACTICE.
- ANCHOR BOLTS, NUTS AND WASHERS SHALL BE SHIPPED AS AN ASSEMBLY FROM THE SIGNLIGHTING MANUFACTURER.
- DO NOT CUT ANCHOR BOLTS AFTER INSTALLATION OF FRAME.



STEEL NOTES:

- REINFORCEMENT: GRADE 60.
- ALL HARDWARE SHALL BE HOT-DIP GALVANIZED IN ACCORDANCE WITH ASTM A-123 UNLESS OTHERWISE NOTED.
- ANCHOR RODS, NUTS, AND WASHERS SHALL BE SHIPPED AS AN ASSEMBLY FROM THE SIGNLIGHTING MANUFACTURER. COORDINATE WITH MANUFACTURER.
A. ANCHOR BOLTS: ASTM F1554, GRADE 36
B. WASHERS: ASTM A-436
C. NUTS: AS630H OR A14-2H
- FIELD HEATING TO BEND STEEL SHALL NOT BE ALLOWED.
- DO NOT CUT ANCHOR BOLTS AFTER INSTALLATION OF POLE.
- CONTRACTOR (INSTALLER) IS RESPONSIBLE FOR THE MEANS AND METHODS OF CONSTRUCTION IN REGARDS TO JOBSITE SAFETY.
- STRUCTURAL SIGN FRAME AND BASE PLATE DETAILS ARE PROVIDED BY SIGN MANUFACTURER. COORDINATE ALL ATTACHMENTS OF SIGN WITH MANUFACTURER. REFER TO SIGN MANUFACTURER DRAWINGS AND INSTRUCTIONS FOR ADDITIONAL INFORMATION.



TACO BELL
RESTAURANT
SITE ADDRESS: STREET ADDRESS, CITY, STATE, ZIP

PROJECT: 1000.04
DESIGN: 100
CONTRACT: 100

PRE-SELL / MENU BOARD FOUNDATIONS

S1.0

1 N.T.S. MENU BOARD

HME Concrete Foundation For SPP2 Speaker Post INSTALLATION INSTRUCTIONS

The SPP2 Speaker Post requires a concrete foundation with four anchor bolts and one or more conduits embedded in it. One conduit must be installed for the audio cable. Additional conduit(s) may be required for a vehicle detection cable and/or for an AC electrical cable. These instructions are for installation of the SPP2 concrete foundation at new drive-thru sites.

CAUTION: All electrical connections must be made by a licensed electrical contractor.

If you have any questions regarding this installation, call HME Customer Support at 1-800-848-4468.

Equipment Provided
1 ea Template
4 ea Anchor bolt with 2 hexagonal nuts

Material Required
Concrete, 6 cubic feet

Procedure

- Position the foundation so that water will drain away from the base of the speaker post. The top surface of the foundation must be six to ten inches above the surface of the drive-thru lane. The side of the foundation must be 2 feet or less from the side of the drive-thru lane, and parallel to the lane as shown in Figure 2.

Build a 24" x 24" inch form with its top six to ten inches above the surface of the drive-thru lane. Dig a hole in the ground to a depth 18 inches below the top of the form for pouring the concrete foundation shown in Figure 1.

NOTE: In environments where permafrost is a problem, such as in northern Canada or Alaska, different concrete foundation measurements may be required than those shown in Figures 1 and 2. The foundation must be set below the frost line, which varies, depending on location. A fibre form can be used for pouring the concrete to the desired shape and size.

HME ELECTRONICS, INC. 14110 Stove Drive, Poway, CA 92084 USA • Phone: 1-800-848-4468 Fax: (858) 552-0172

- Remove one of the two hexagonal nuts from each of the anchor bolts.

Be certain the second nut is all the way down to the bottom of the threaded area on the anchor bolt as shown in Figure 3.

Put the threaded end of each anchor bolt through one of the 1/2 inch holes in the template, and replace the nut on the anchor bolt until it holds the template snugly between the two nuts.

Position the "L" ends of the anchor bolts outward, away from each other. Place the anchor bolts into the hole in the ground with the template 1/4" to 1/2" above the top of the form, as level as possible. Be certain to comply with the note on the template to place one edge of the template "TOWARD DRIVE-THRU LANE."

NOTE: If a loop-type vehicle detector will be used, a separate conduit must be dedicated for the loop cable.

- Route the conduit (one or more) so it/they will extend through the center of the hole, and upward approximately 6 inches through the center of the template as shown in Figure 4.
- Hold the template steady, and fill the hole with concrete to the bottom of the template. Smooth the concrete, sloping it away from the template toward the form for proper drainage, and allow it to dry.

After the concrete has dried, remove the upper nuts and template from the anchor bolts.

In the event of an electrical power outage —
Such as from a lightning storm or power generator failure, if you experience problems with your HME equipment after the electricity comes on again, unplug the AC power adapters from their electrical outlets, then plug them back in.

SPP2 Speaker Post for Clear Drive-Thru Communication

Mounting Template Diagram

SPP2 Speaker Post Dimensions

Specifications

Components:
> Zinc-Plated Speaker Post and Speaker
> Mounting Kit
> Lighting Kit
> Microphone

*Sold Separately
**Optional

Mechanical Dimensions:
> Height: 43" (1.09 M)
> Width: 8" (203 mm)
> Depth: 9" (229 mm)

Call toll-free (800) 848-4468 or your authorized HME dealer for more information.

About HME
HME Electronics, Inc. (HME) is the leading provider of customer-focused solutions for quick service restaurants. Our wireless communication systems, drive-thru timers, security systems, and service programs have helped businesses worldwide improve operations and increase profits. Incorporated in 1971, HME develops, manufactures, markets and services a comprehensive line of drive-thru solutions in over 70 countries worldwide.

Applicant/Owner:
MARVIN DEVELOPMENT VII, LLC
5425 BOONE AVE. N
NEW HOPE, MINNESOTA 55428

Tenant:
BORDER FOODS, LLC
5425 BOONE AVE. N
NEW HOPE, MINNESOTA 55428

Contact: Zach Zelikson
Phone: 763-489-2968

ENDEAVOR
40 SEATS / 2,867 S.F.

PROJECT NO.: TB25-02
DRAWN BY: KDT
CHECKED BY: GGD
ISSUES AND REVISIONS:
C.U.P./SITE PLAN REVIEW: 04.11.2025
CITY COMMENTS: 05.07.2025

Border Foods Digital Menu Board Checklist

Timeline-
DMB should be scheduled to be installed at least 3 business days before hand-off of restaurant to Ops team/Border Foods. This requires all prep work for completed 2 business days prior to install. (See below in SOW.) Example: If a store is being handed off on Friday the 28th the DMB install should be installed no later than Tuesday EOD the 25th. This would be prep work would need to be completed on Friday the 21st. (See below under SOW for details.)

Starting 4 weeks prior to DMB install we need weekly update from Project Manager/Contractor verifying site will be ready per scheduled dates and timeline. If not, we need to have updated schedule, so we can adjust installer's dates. Technology Dept. will coordinate with Stratacache and Technology installers to verify Network will be up day prior. (Please see Technology SOW so building is ready for Technology install in office day before DMB install.)

SOW-
INSTALL CANCELLATION/RESCHEDULE/REVISIT FEE - Notification of install cancellation or reschedule is required no later than 4PM EST 2 business days before scheduled install date to avoid a \$400 Cancellation Penalty. If the DMB install team arrives on site and the site is not ready or does not meet the DMB Installation Requirements on the day of your install, a \$400 Revisit Penalty will be applied

Stratacache requires a response to each item below no later than 4pm EST 2 business days prior to scheduled install. The contractor is responsible for verify all items are ready for Stratacache install team.

Outside DMB Requirements:
Here are the additional Requirement for Outside DMB.

- PHOTOS:** Have you emailed your Footers Job Prep Photos showing the outside Footers with Conduit runs set up per spec? (These photos are required prior to the install team arriving onsite?) These should be emailed to ldm@tacobell@stratacache.com and cc@DMB@borderfoods.com.
- FOOTER PREP:** Are all footers and anchor bolts in place per plan?
- POWER:** Does the site have Permanent Power to the building and to the menu board? Must be dedicated along on circuit NOT shared with lot lights.
- CATS:** (3) Cat6 cables run in continuous lines from network switch to and through conduit and sealed so they are not damaged before install.
- NETWORK:** Network will be up and installed no later than day before install.
- REVIEW:** Review the attached Site Readiness Requirements document to ensure the site is ready for your install.

INFORMATION THIS DETAIL FOR REFERENCE ONLY.

G.C. TO OBTAIN FINAL SPECIFICATIONS AND DETAILS FROM VENDOR/SUPPLIER PRIOR TO PROCEEDING WITH ANY CONSEQUENTIAL WORK.

PRELIMINARY FOOTING SIZE:
24"x24"x60"

OBTAIN FINAL REQUIREMENTS FROM SUPPLIER AND COORDINATE WITH LOCAL FROST DEPTH REQUIREMENTS

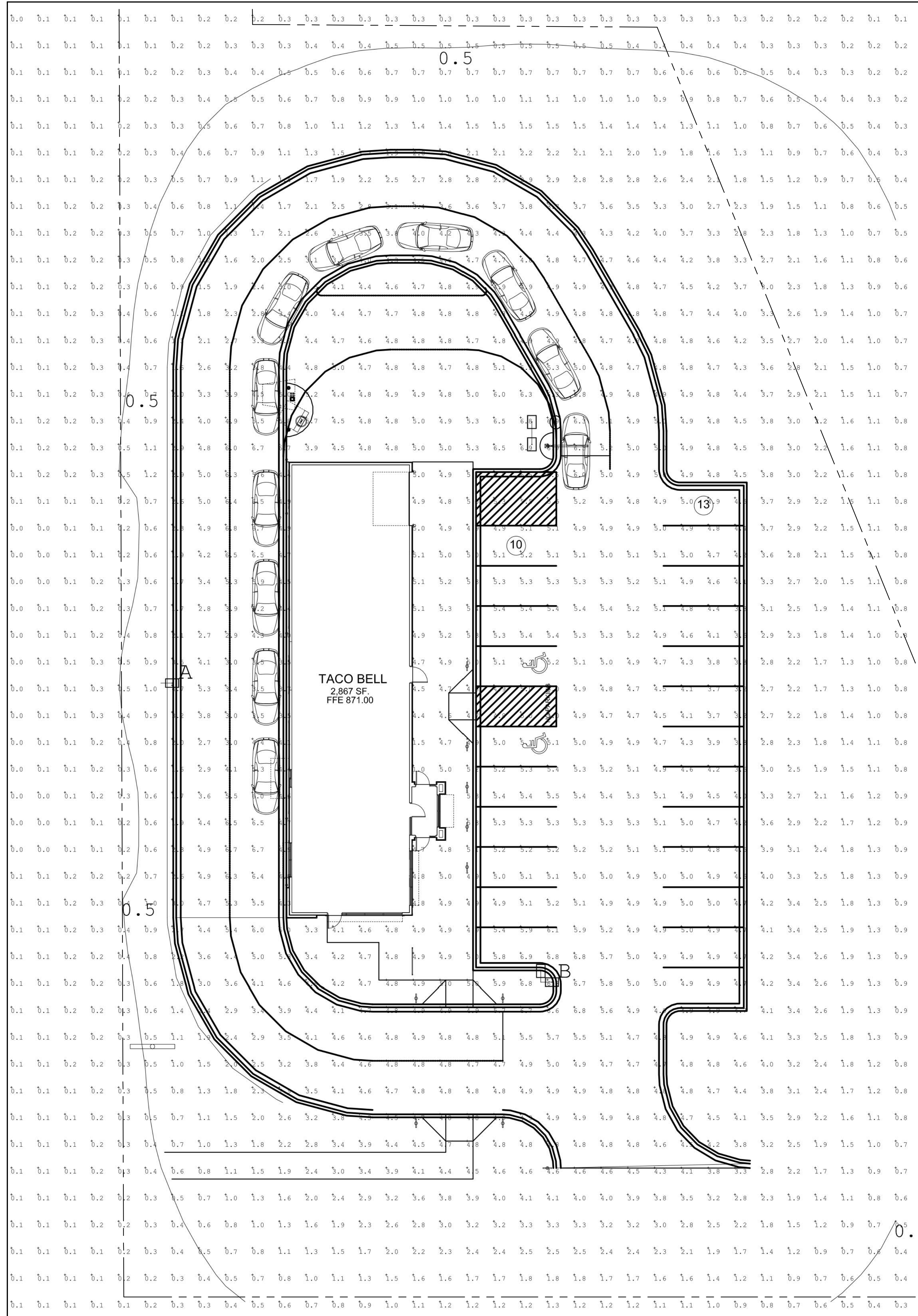
SITE DETAILS

A102
TACO BELL - RAMSEY, MN

2 N.T.S. SPEAKER BOX DETAIL

FINN DANIELS ARCHITECTS
1440 Northland Drive, Suite 250
Mendota Heights, MN 55120
651.690.5525 // www.finn-daniels.com

TACO BELL
14751 ARMSTRONG BLVD NW
RAMSEY, MN 55303



TACO BELL
 14751 ARMSTRONG BLVD NW
 RAMSEY, MN
 MAY 13, 2025

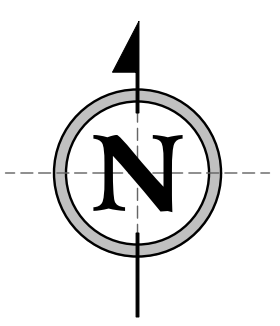
ACCUSERV LIGHTING & EQUIPMENT
 877-707-7378
 DESIGNED BY: JOHN BUJAKE
 jbujake@accu-serv.com
 QUOTATIONS BY: TESSA PARISE
 tparise@accu-serv.com

Label	Avg	Max	Min	Avg/Min	Max/Min
EXTENDED	2.63	6.9	0.0	N.A.	N.A.
PARKING LOT & DRIVE-THRU SURFACE	4.63	6.9	1.5	3.09	4.60

LIGHT LEVELS ARE MAINTAINED FOOT-CANDLES

Symbol	Qty	Label	Arrangement	Luminaire Lumens	LLF	CCT	Luminaire Watts	Mounting Height	Description
☐	1	A	SINGLE	25019	0.900	4000K	321	27.5	VP-2-320L-315-4K7-2-UNV-A-DBT-BC / SES-25-40-01-F-B4-DBT
☐	1	B	2 @ 90 degrees	43479	0.900	4000K	321	27.5	(2) VP-2-320L-315-4K7-5QW-UNV-A-DBT / SES-25-40-01-F-B4-DBT
☐	1	C	Back-Back	43479	0.900	4000K	321	27.5	(2) VP-2-320L-315-4K7-5QW-UNV-A-DBT / SES-25-40-01-F-B4-DBT

POLES ARE 25'-0" ON 2'-6" BASES



14751 ARMSTRONG BLVD NW
 RAMSEY, MN 55303

Applicant/Owner:
 MARVIN DEVELOPMENT VII, LLC
 5425 BOONE AVE N
 NEW HOPE, MINNESOTA 55428

Tenant:
 BORDER FOODS, LLC
 5425 BOONE AVE N
 NEW HOPE, MINNESOTA 55428

Contact: Zach Zolickson
 Phone: 763-489-2968

ENDEAVOR
 40 SEATS / 2,867 S.F.

PROJECT NO.: TB25-02
 DRAWN BY: KDT
 CHECKED BY: GGD

ISSUES AND REVISIONS:

C.U.P./SITE PLAN REVIEW: 04.11.2025
 CITY COMMENTS: 05.07.2025

**PRELIMINARY -
 NOT FOR
 CONSTRUCTION**

**SITE LIGHTING
 PHOTOMETRIC**

A103
 TACO BELL - RAMSEY, MN