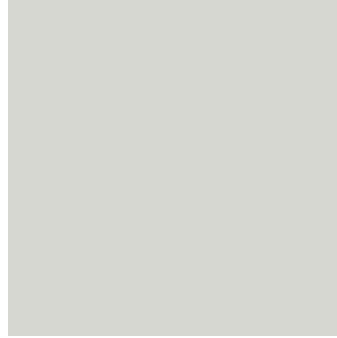




**CHIPOTLE SIGNAGE**



**BRICK**  
COLOR: MANGANESE  
IRONSPOT



**EIFS/ METAL COPING**  
COLOR: PPG #1010-2 "FOG"



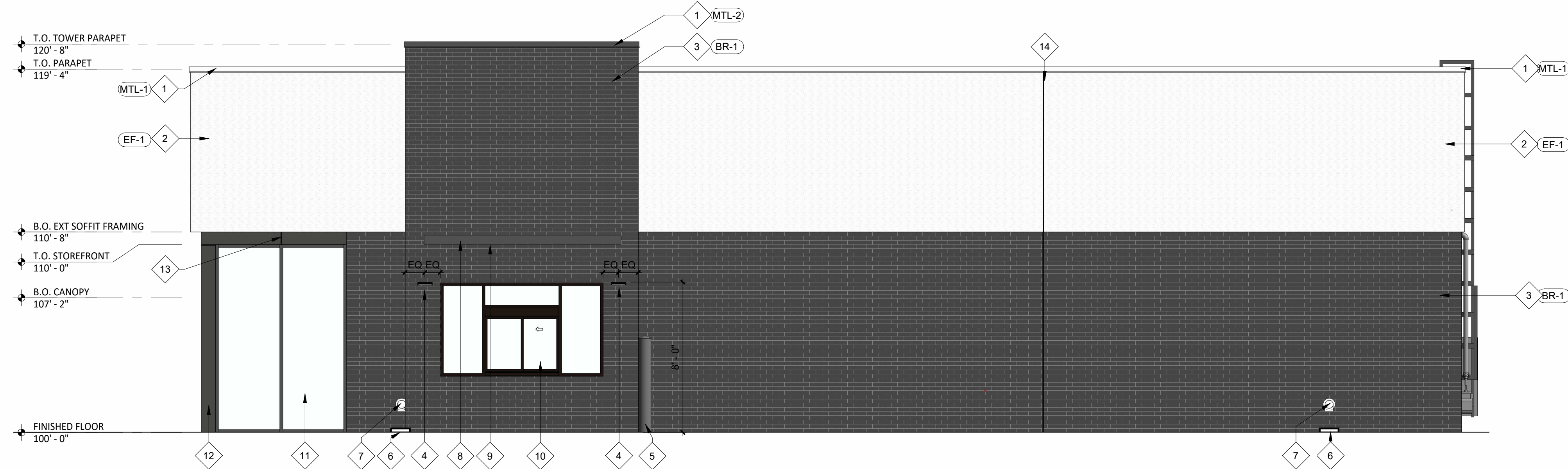
**METAL COPING**  
COLOR: PPG #1001-6  
"KNIGHTS ARMOR"



**ENTRY DOOR/ CANOPY**  
COLOR: CHARCOAL

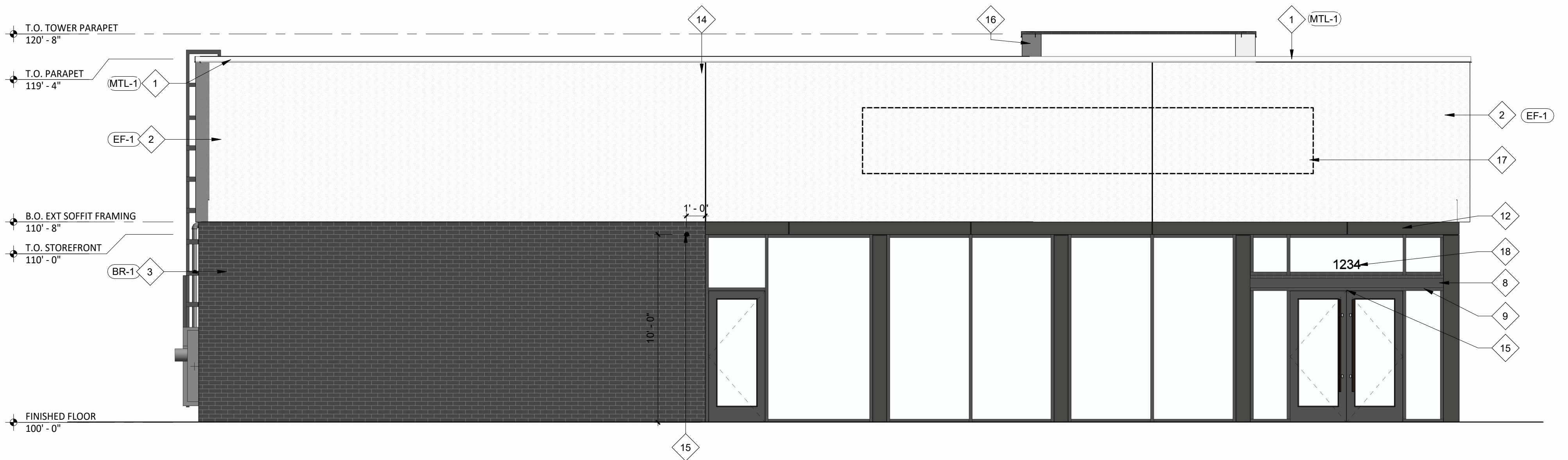


**PATIO FURNIATURE/ UMBRELLAS/ RAILING**  
ARC EN CIEL 314 CHAIR / TUUCI 8.5' HEXAGON/ API  
PATIO RAILING  
COLOR: ANTIQUE IRON/ BLACK /



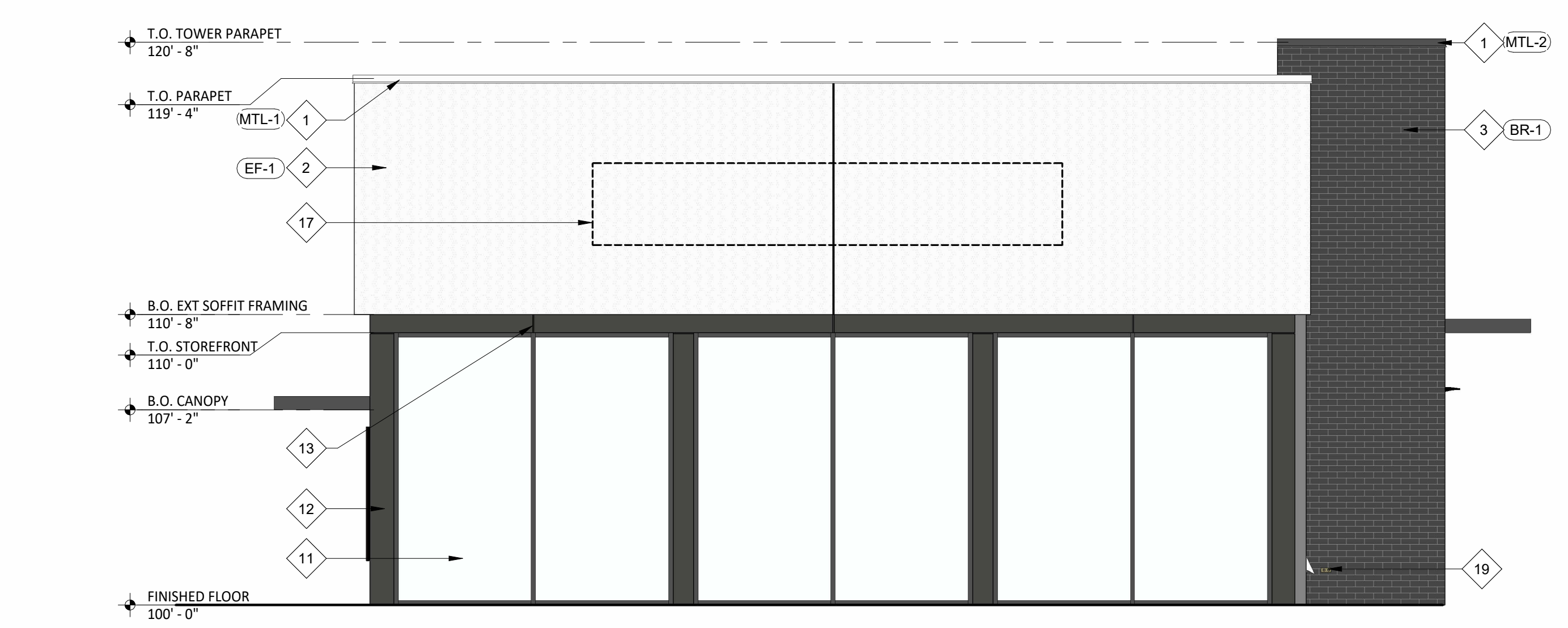
**1 EXTERIOR ELEVATION**  
SCALE: 1/4" = 1'-0"  
SOUTH - SUNWOOD

STOREFRONT	125 SF	9%
EIFS	488 SF	37%
BRICK	712 SF	54%
<b>TOTAL</b>	<b>1,325 SF</b>	<b>100%</b>



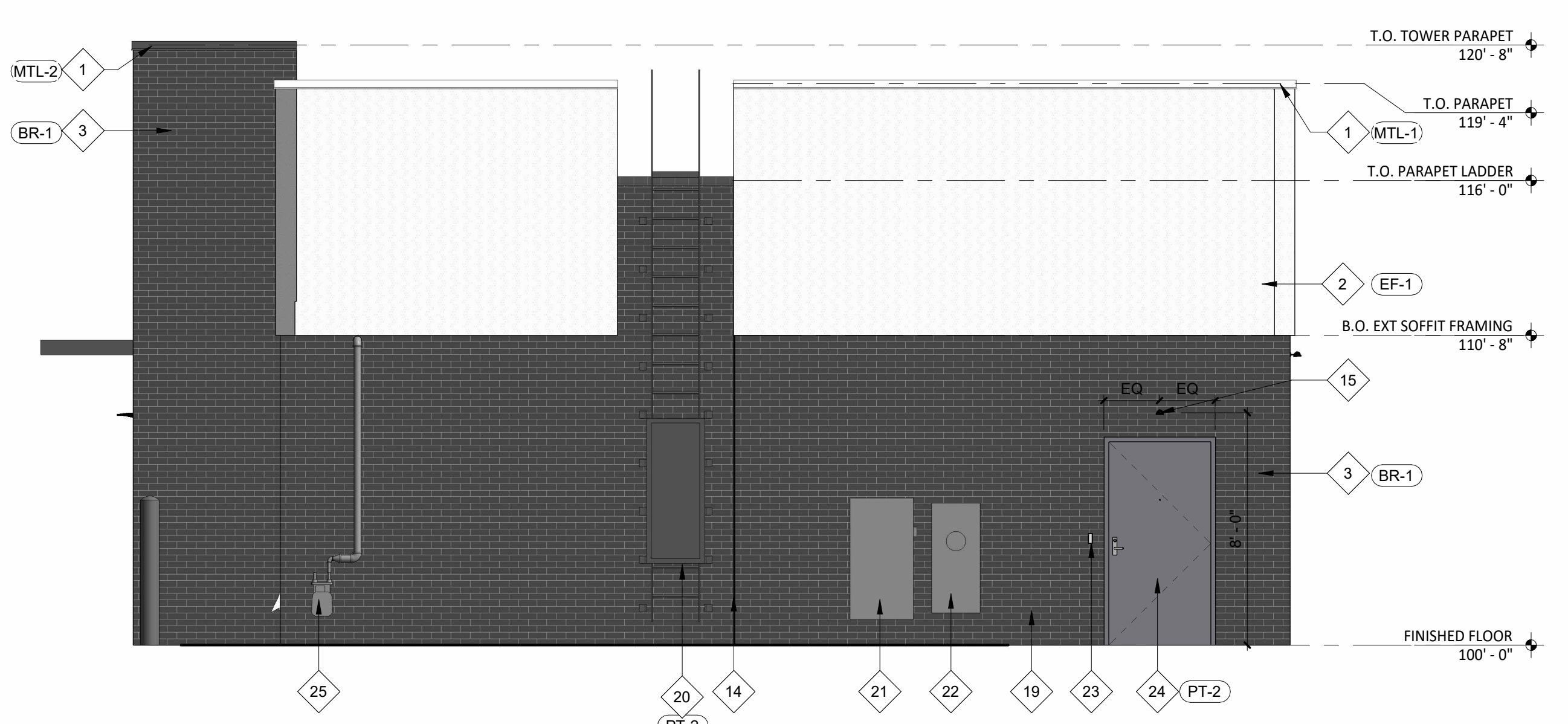
**2 EXTERIOR ELEVATION**  
SCALE: 1/4" = 1'-0"  
NORTH

STOREFRONT	427 SF	33%
EIFS	595 SF	45%
MSCI METAL PANEL	0 SF	0%
BRICK	287 SF	22%
<b>TOTAL</b>	<b>1,309 SF</b>	<b>100%</b>



**3 EXTERIOR ELEVATION**  
SCALE: 1/4" = 1'-0"  
WEST - ARMSTRONG

STOREFRONT	362 SF	46%
EIFS	311 SF	40%
BRICK	105 SF	14%
<b>TOTAL</b>	<b>778 SF</b>	<b>100%</b>



**4 EXTERIOR ELEVATION**  
SCALE: 1/4" = 1'-0"  
EAST

STOREFRONT	0 SF	0%
EIFS	270 SF	35%
BRICK	495 SF	65%
<b>TOTAL</b>	<b>765 SF</b>	<b>100%</b>

**EXT. ELEV GENERAL NOTES**

A. METAL CANOPY IS AVAILABLE FROM AMERICAN PRODUCTS, INC. (API), PHONE: (813)-925-0144, E-MAIL: BIDS@AMERICANPROD.COM

**KEYNOTE LEGEND**

- 1 PREFINISHED METAL COPING.
- 2 EIFS - REFER TO SPECIFICATIONS FOR ADDITIONAL INFORMATION.
- 3 BRICK VENEER - RUNNING BOND - REFER TO SPECIFICATIONS FOR ADDITIONAL INFORMATION.
- 4 WALL PACK LIGHT (X6) - COLOR TO MATCH ADJACENT WALL FINISH.
- 5 8" CONCRETE SAFETY BOLLARD.
- 6 CONCRETE SPLASH BLOCK.
- 7 STAINLESS STEEL COW TONGUE OVERFLOW ROOF DRAIN DISCHARGE.
- 8 PREFINISHED METAL CANOPY W/ INTEGRAL LIGHTING.
- 9 LED CHANNEL LIGHT (X9) - LENGTH TO MATCH CANOPY
- 10 PREFINISHED DARK BRONZE ALUMINUM PASS-THRU WINDOW WITH INTEGRATED INTERIOR AIR CURTAIN, TRANSOM AND SIDELITES - CAULK AROUND ENTIRE PERIMETER OF OPENING.
- 11 THERMALLY BROKEN ALUMINUM STOREFRONT SYSTEM WITH 1" INSULATED GLAZING - CAULK AROUND ENTIRE PERIMETER OF OPENINGS.
- 12 PREFINISHED BRASS METAL - MATCH STOREFRONT FINISH.
- 13 BRASS METAL SEAM LOCATION, MAINTAIN ALIGNMENT WITH ADJACENT FINISHES.
- 14 EIFS JOINT ALIGNED WITH BUILDING ELEMENTS AS SHOWN - REFER TO MANUFACTURER'S RECOMMENDATION FOR SPACING REQUIREMENTS.
- 15 EXTERIOR EMERGENCY LIGHT (E2).
- 16 RAISED PARAPET BEYOND - EXTERIOR FINISHES TO WRAP AROUND ON EXPOSED SIDES.
- 17 HATCHED AREA INDICATES EXTENTS OF BLOCKING TO BE PROVIDED BY GENERAL CONTRACTOR - PROVIDE ELECTRICAL ACCESS AS REQUIRED - COORDINATE ADDITIONAL REQUIREMENTS WITH TENANT SIGNAGE VENDOR.
- 18 6" HIGH VINYL BUILDING ADDRESS NUMBERS - COORDINATE REQUIREMENTS WITH AUTHORITIES HAVING JURISDICTION.
- 19 FROST PROOF WALL HYDRANT.
- 20 EXTERIOR ROOF LADDER WITH LOCKING GATE.
- 21 ELECTRICAL FUSED DISCONNECT SWITCH.
- 22 ELECTRICAL METER.
- 23 DOOR BELL - MOUNT BETWEEN 36" AND 48" ABOVE GRADE.
- 24 INSULATED HOLLOW METAL DOOR AND FRAME - CAULK AROUND ENTIRE PERIMETER OF OPENING.
- 25 GAS METER

**EXTERIOR FINISH SCHEDULE**

FINISH	MATERIAL	COLOR	REMARKS
BR-1	4" FACE BRICK	MANGANESE IRONSPOT	REFER TO SPEC FOR GROUT COLOR
EF-1	EIFS	MATCH PT-1	FLAT FINISH
MTL-1	PREFINISHED METAL COPING	MATCH PT-1	TO MATCH ADJACENT FINISH
MTL-2	PREFINISHED METAL COPING	MATCH PT-2	TO MATCH ADJACENT FINISH
PT-1	PAINT	PPG #1010-2 "FOG"	
PT-2	PAINT	PPG #1001-6 "KNIGHT'S ARMOR"	

CONSULTANT



CLIENT

ALLISON KERN MORGAN  
CAPITAL REAL ESTATE, INC.  
7650 EDINBOROUGH WAY, SUITE 200  
EDINA, MN 55435  
P: 612-313-0126  
AMORGAN@CAPREI.COM

PROJECT INFORMATION

**RAMSEY, MN**  
**SHELL BUILDING**  
ARMSTRONG BLVD & SUNWOOD DRIVE NW  
RAMSEY, MN 55303

SEAL

**NOT FOR CONSTRUCTION**

PROJECT NO. 0000-0000  
DRAWN BY <designer name>  
CHECKED BY <manager name>

ISSUE DATE  
PERMIT PLAN REVIEW XXXX/XXXX

REVISION	DATE

TITLE: **EXTERIOR ELEVATIONS**

SHEET NUMBER: **A-700**



# CHIPOTLE SHELL BUILDING

RAMSEY, MN  
PRELIMINARY EXTERIOR RENDERINGS  
2025-06-11



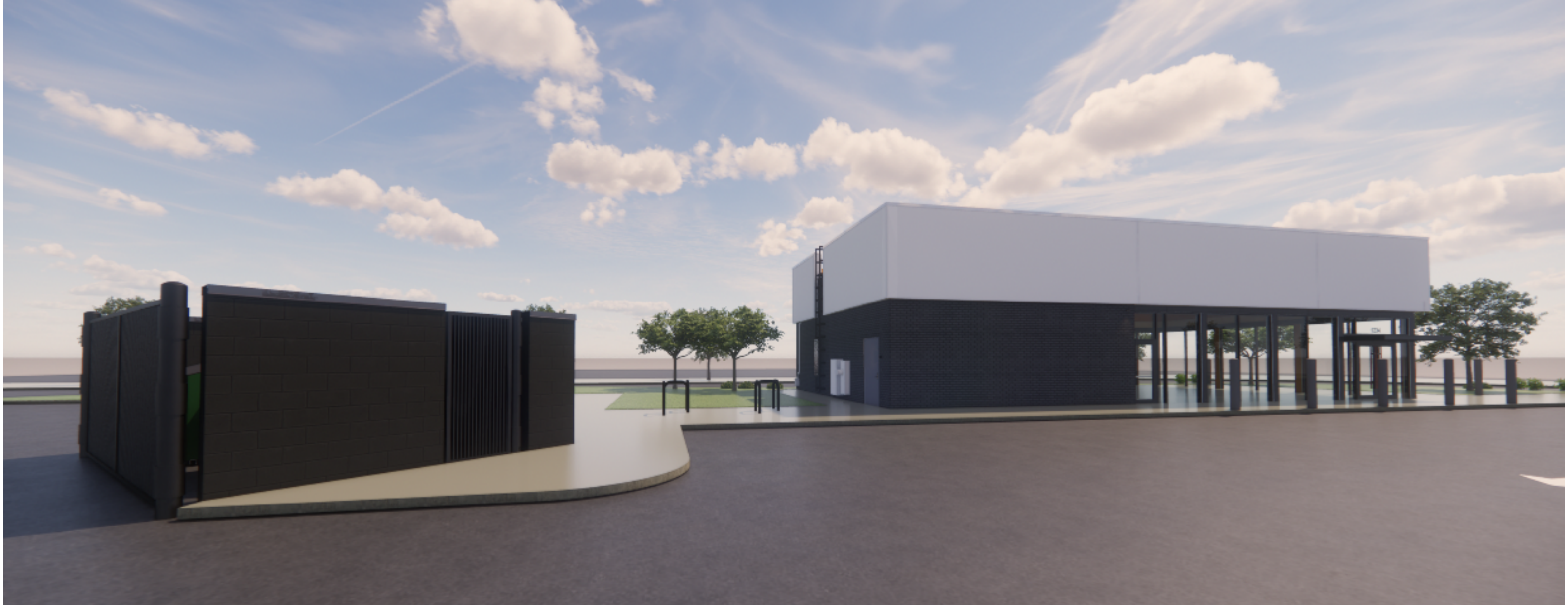


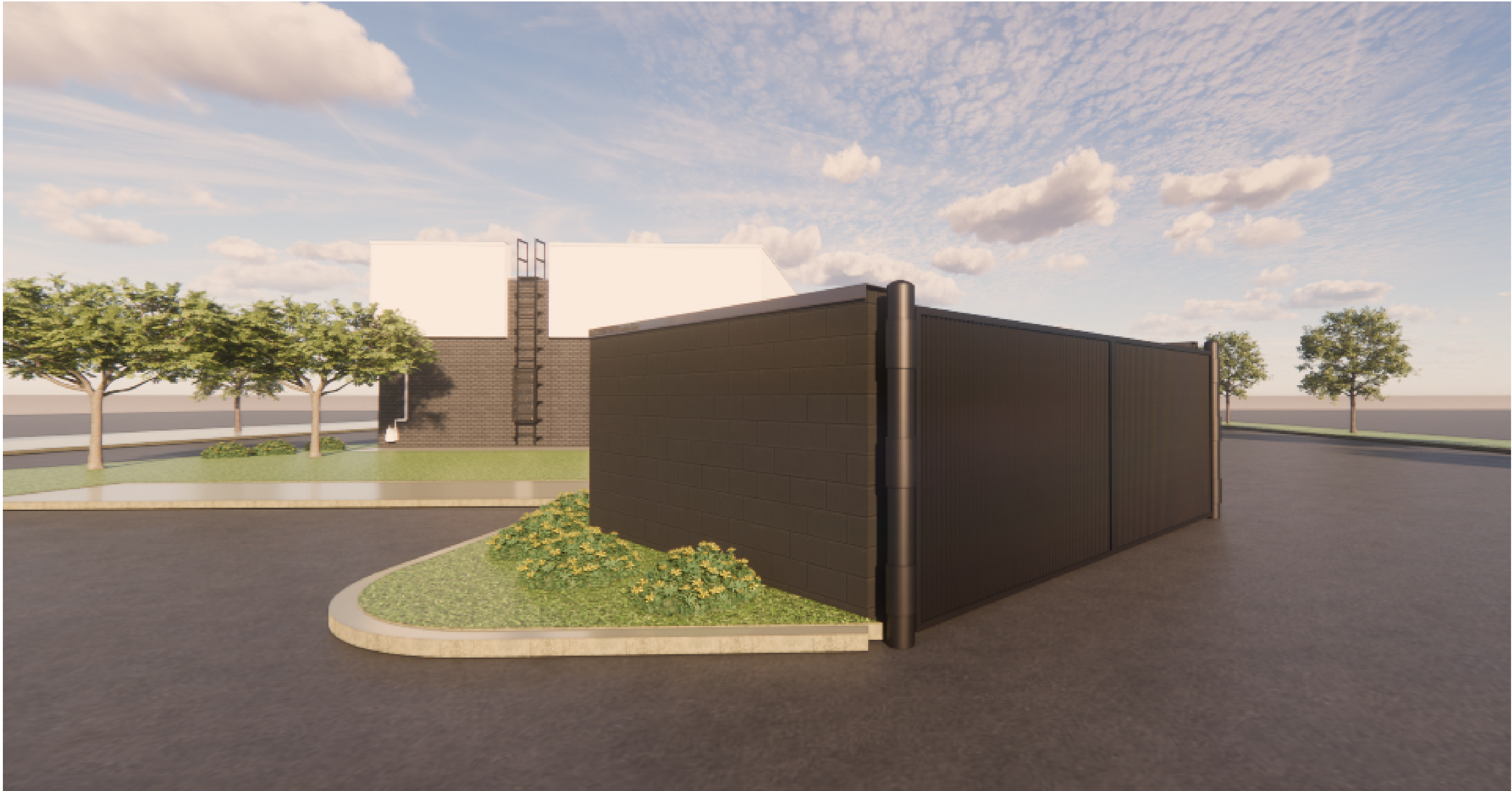
**CHIPOTLE SHELL BUILDING - RAMSEY, MN**

EXTERIOR RENDERING









**CHIPOTLE SHELL BUILDING - RAMSEY, MN**

EXTERIOR RENDERING

**THANK YOU**  
WILKUS ARCHITECTS





# PS.3 25'H D/F FACE LIT PYLON - FLEX FACE - EXTERIOR (Qty 1) - OPTION 1

SQUARE FOOTAGE: 76.6

PART NUMBERS

## SPECIFICATIONS:

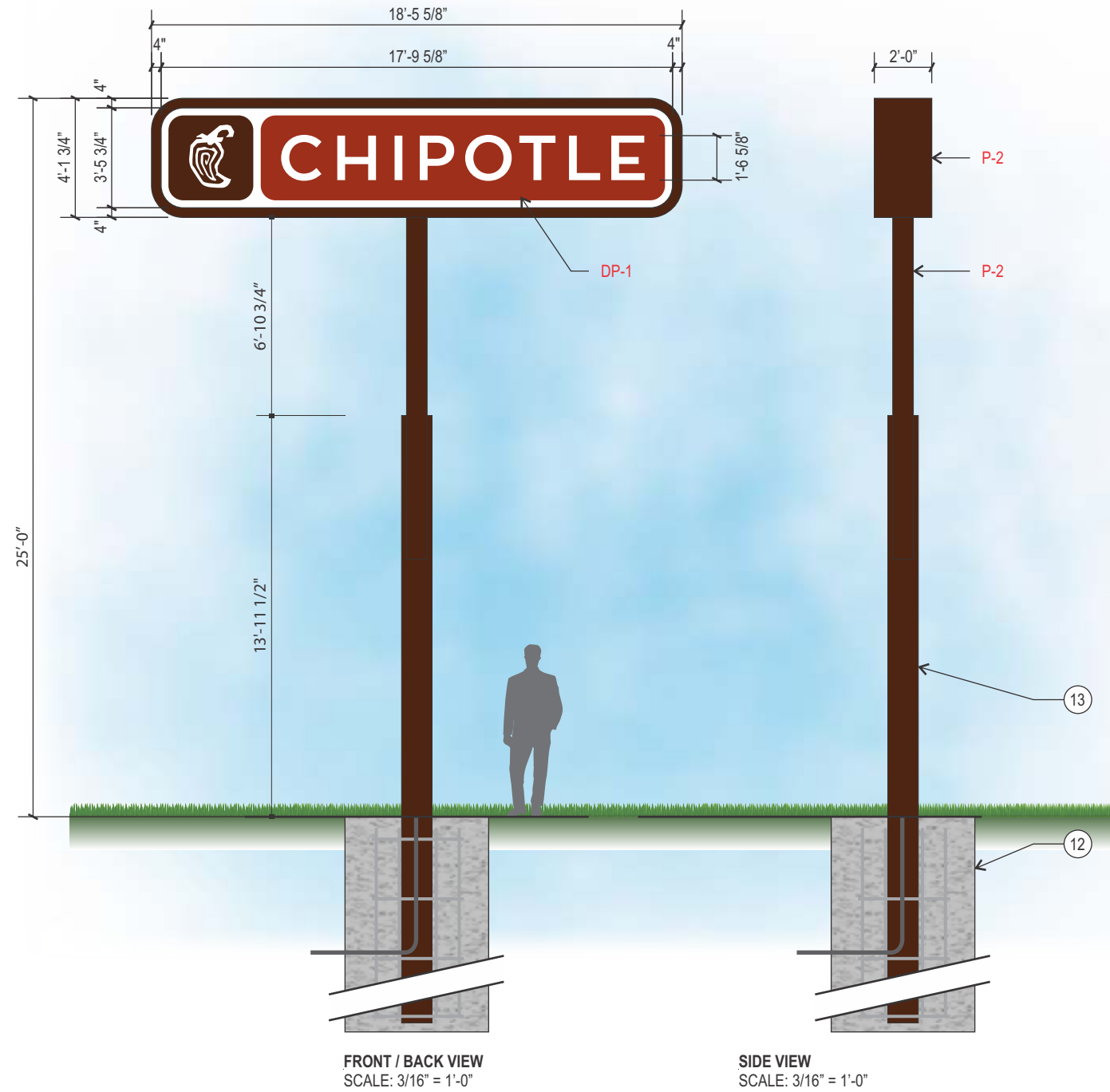
1. 2" X 1" X .125" ALUMINUM TUBE FRAME
2. 4" X 4" X .125" ALUMINUM RETAINER P-2
3. DIGITALLY PRINTED FLEX FACE DP-1
4. STEEL ANGLE SADDLE
5. .063 PRE-FINISHED ALUMINUM SKIN, RIVETED P-2
6. WHITE LED'S
7. LED POWER SUPPLY
8. .080" PRE-FINISHED ALUMINUM SERVICE ACCESS DOOR P-2
9. 3/8"Ø LIFTING EYES (EYE BOLTS), MINIMUM OF 2
10. 1/8" ALUMINUM 4" RADIUS ENDS P-2
11. POST DIRECT BURIED IN CAISSON
12. CONCRETE AND REBAR DONE BY SIGN VENDOR SUBCONTRACTOR
13. TWO TIER STEPPED PIPE - FROM SCH 40 12" X .24" WALL PIPE TO SCH 30 8" X .277" WALL PIPE P-2

## NOTES

- INTERIOR OF CABINET PAINTED WHITE
- ALL ELECTRICAL PARTS & ASSEMBLIES UL LISTED
- PRIMARY ELECTRICAL WIRING FROM SIGN WILL BE WIRED INTO THE EXISTING 120V ELECTRICAL SOURCE
- SECONDARY ELECTRICAL LED CONTROLLERS HOUSED INSIDE PERIMETER OF SIGN CABINET
- ETL / UL STICKER TO BE PLACED ON BOTTOM OF SIGN, VISIBLE FROM GROUND

## COLORS / FINISHES:

- P-2 ADOBO BROWN (JW CHIPOTLE BROWN)
- DP-1 DIGITALLY PRINTED FLEX FACE
- TO MATCH PMS 484C "ROASTED RED"
- TO MATCH PMS 4625C "ADOBO BROWN"



## REQUIRED:

FOOTING AND SIGN STRUCTURE

# PS.3 25'H D/F SIGN WITH POLYCARBONATE FACES - EXTERIOR (Qty 1) - OPTION 2

SQUARE FOOTAGE: 64

## SPECIFICATIONS:

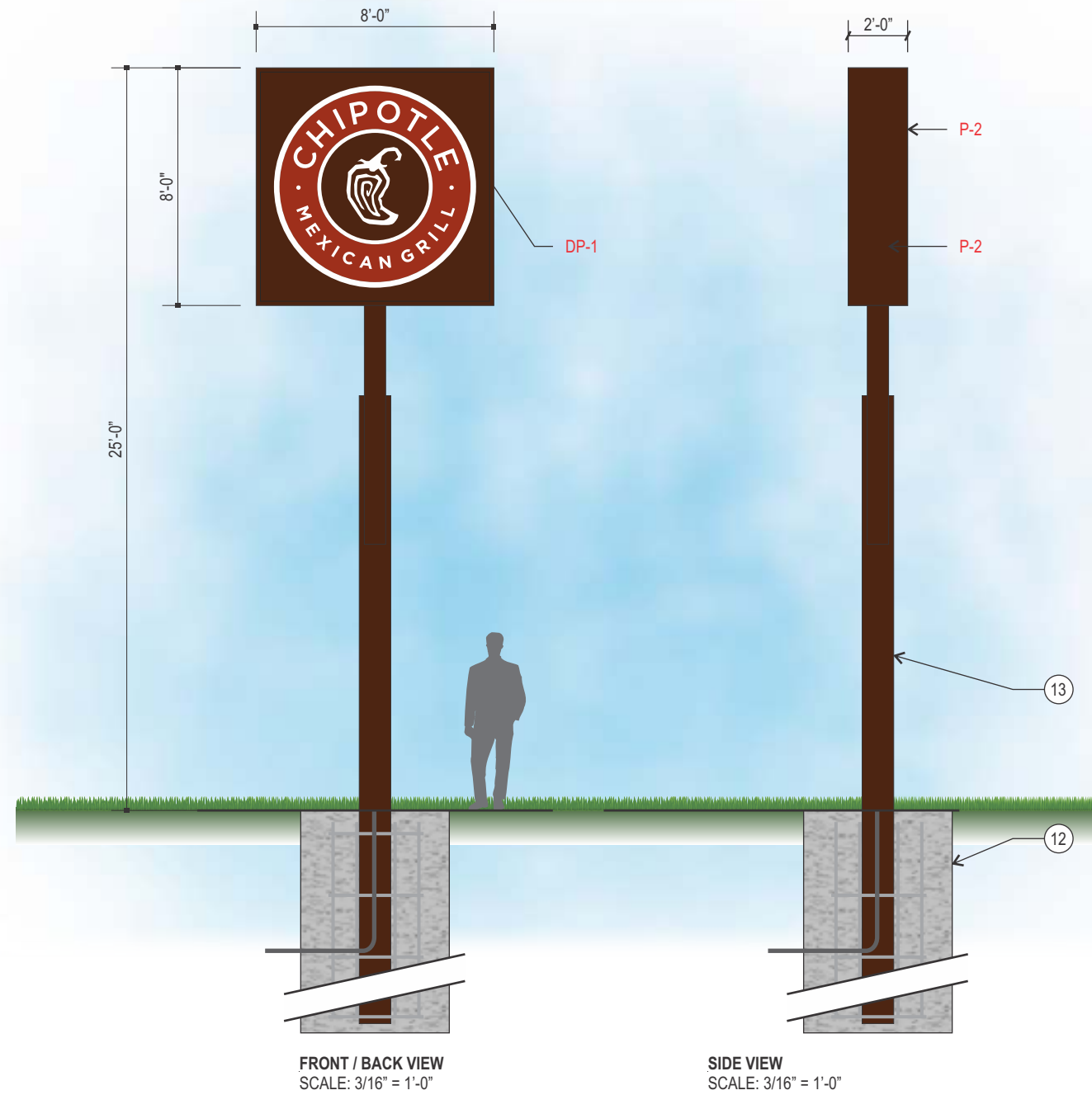
1. 2" X 1" X .125" ALUMINUM TUBE FRAME
2. 4" X 4" X .125" ALUMINUM RETAINER P-2
3. WHITE POLYCARBONATE FACE WITH DIGITAL PRINT DIGITALLY PRINTED TRANSLUCENT VINYL V-5 & V-6 APPLIED 1ST SURFACE TO FACES  
OPAQUE VINYL V-2 APPLIED 1ST SURFACE TO FACES
4. STEEL ANGLE SADDLE
5. .063 PRE-FINISHED ALUMINUM SKIN, RIVETED P-2
6. WHITE LED'S
7. LED POWER SUPPLY
8. .080" PRE-FINISHED ALUMINUM SERVICE ACCESS DOOR P-2
9. 3/8"Ø LIFTING EYES (EYE BOLTS), MINIMUM OF 2
10. TOGGLE DISCONNECT SWITCH MOUNTED TO CABINET RETURN
11. POST DIRECT BURIED IN CAISSON
12. CONCRETE AND REBAR DONE BY SIGN VENDOR SUBCONTRACTOR
13. TWO TIER STEPPED PIPE - FROM SCH 40 12" X .24" WALL PIPE TO SCH 30 8" X .277" WALL PIPE P-2

## NOTES

- INTERIOR OF CABINET PAINTED WHITE
- ALL ELECTRICAL PARTS & ASSEMBLIES UL LISTED
- PRIMARY ELECTRICAL WIRING FROM SIGN WILL BE WIRED INTO THE EXISTING 120V ELECTRICAL SOURCE
- SECONDARY ELECTRICAL LED CONTROLLERS HOUSED INSIDE PERIMETER OF SIGN CABINET
- ETL / UL STICKER TO BE PLACED ON BOTTOM OF SIGN, VISIBLE FROM GROUND

## COLORS / FINISHES:

- P-1 ROASTED RED (JW CHIPOTLE ROASTED RED)
- P-2 ADOBO BROWN (JW CHIPOTLE BROWN)
- V-7 3M 3630-20 TRANSLUCENT WHITE VINYL
- V-2 OPAQUE VINYL TO MATCH ARLON #2100-3651 ADOBO BROWN
- V-5 TRANSLUCENT VINYL PRINTED TO MATCH PMS 484C ROASTED RED
- V-6 TRANSLUCENT VINYL PRINTED TO MATCH PMS 4625C ADOBO BROWN



## REQUIRED:

FOOTING AND SIGN STRUCTURE



NOT FOR CONSTRUCTION

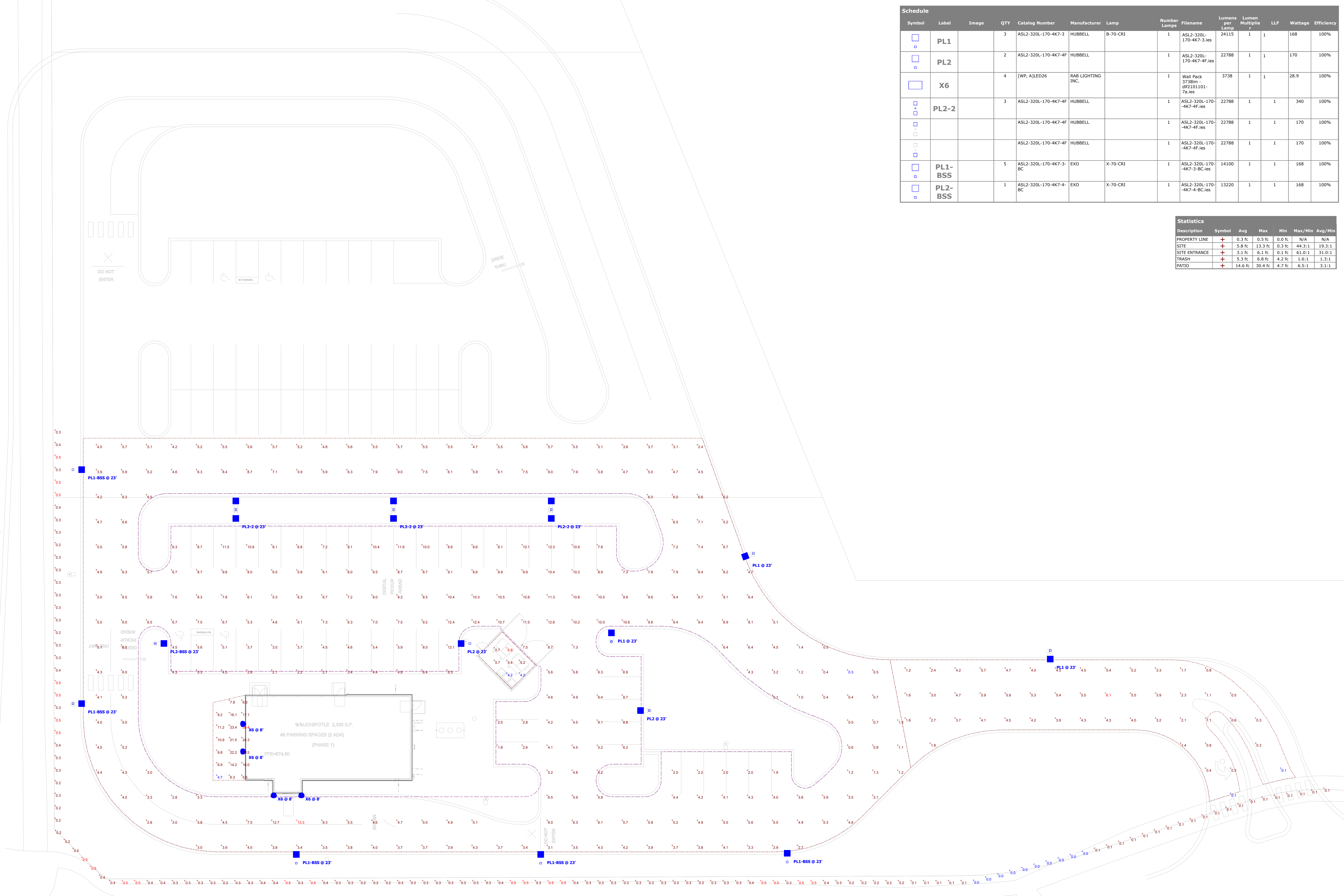


DUNHAM  
50 South Park Street / Suite 1100  
Minneapolis, Minnesota 55402-1540  
Phone: 612.465.7550  
Fax: 612.465.7551  
Web: dunhameng.com  
mechanical + electrical  
consulting engineering

Chipotle Ramsey MN  
Sunwood Dr NW & Armstrong Blvd NW

Symbol	Label	Image	QTY	Catalog Number	Manufacturer	Lamp	Number Lamps	Filename	Lumens per Lamp	Lumen Multiplier	LLF	Wattage	Efficiency
□	PL1		3	ASL2-320L-170-4K7-3	HUBBELL	B-70-CRI	1	ASL2-320L-170-4K7-3.ies	24115	1	1	168	100%
□	PL2		2	ASL2-320L-170-4K7-4F	HUBBELL		1	ASL2-320L-170-4K7-4F.ies	22788	1	1	170	100%
□	X6		4	[WP, A]LED26	RAB LIGHTING INC.		1	Wall Pack 3738m - df2101101-7a.ies	3738	1	1	28.9	100%
□	PL2-2		3	ASL2-320L-170-4K7-4F	HUBBELL		1	ASL2-320L-170-4K7-4F.ies	22788	1	1	340	100%
□				ASL2-320L-170-4K7-4F	HUBBELL		1	ASL2-320L-170-4K7-4F.ies	22788	1	1	170	100%
□				ASL2-320L-170-4K7-4F	HUBBELL		1	ASL2-320L-170-4K7-4F.ies	22788	1	1	170	100%
□	PL1-BSS		5	ASL2-320L-170-4K7-3-BC	EXO	X-70-CRI	1	ASL2-320L-170-4K7-3-BC.ies	14100	1	1	168	100%
□	PL2-BSS		1	ASL2-320L-170-4K7-4-BC	EXO	X-70-CRI	1	ASL2-320L-170-4K7-4-BC.ies	13220	1	1	168	100%

Description	Symbol	Avg	Max	Min	Max/Min	Avg/Min
PROPERTY LINE	+	0.3 fc	0.5 fc	0.0 fc	N/A	N/A
SITE	+	5.8 fc	13.3 fc	0.3 fc	44.3:1	19.3:1
SITE ENTRANCE	+	3.1 fc	6.1 fc	0.1 fc	61.0:1	31.0:1
TRASH	+	5.3 fc	6.8 fc	4.2 fc	1.6:1	1.3:1
PATIO	+	14.6 fc	30.4 fc	4.7 fc	6.5:1	3.1:1



SUNWOOD DRIVE NW

Designer  
Date  
05/07/2025  
Scale  
Not to Scale  
Drawing No.  
Summary

# SLING Micro Strike

AREA/SITE/ROAD LIGHTER

DATE: \_\_\_\_\_ LOCATION: \_\_\_\_\_  
 TYPE: \_\_\_\_\_ PROJECT: \_\_\_\_\_  
 CATALOG #: \_\_\_\_\_

## FEATURES

- Compact sleek design with multiple LED configurations and simple installation
- The SLING includes a square mounting block for easy pole installation or mast arm option for 2-3/8 ft OD roadway brackets
- Capable of replacing up to 1000w HID luminaires
- Micro Strike optical distributions of Type 2, 3, 4F, 4W or 5QW
- Tool-less entry option for easy installation and maintenance
- 3G rated for high vibration applications including bridges and overpasses



## CONTROL TECHNOLOGY



## SERVICE PROGRAMS



## SPECIFICATIONS

### CONSTRUCTION

- Die-cast housing with hidden vertical heat fins that are optimal for heat dissipation while keeping a clean smooth outer surface
- Corrosion resistant, die-cast aluminum housing with powder coat paint finish
- Separate optical and electrical compartment for improved thermal management and optimum component operation
- TGIC thermoset polyester powder paint finish applied at nominal 2.5 mil thickness

### OPTICS

- Entire optical aperture illuminates to create a larger luminous surface area resulting in a low glare appearance without sacrificing optical performance
- Premium engineered individual acrylic lenses deliver IES Type 2, 3, 4F, 4W and 5QW distributions
- Lens distributions are field rotatable (in 90° increments) or exchangeable for job site fine-tuning
- 3000K, 4000K or 5000K (70 CRI) CCT
- 80, 160 or 320 midpower LEDs
- 3000K, 4000K or 5000K (70 CRI) CCT
- Zero uplight at 0 degrees of tilt
- Field rotatable optics

### INSTALLATION

- Tool-less entry to wiring/driver compartment optional
- Arm mounting works with S2 drill pattern
- Fixture ships with square mounting block for ease of installation
- Mast arm fitter accessory or option available for 2-3/8" OD brackets with vertical tilt of +3°, 0° or -3°

### ELECTRICAL

- Universal 120-277 VAC or 347-480 VAC input voltage, 50/60 Hz
- Ambient operating temperature -40° C to 40° C
- Drivers have greater than 90% power factor and less than 20% THD
- LED drivers have output power over-voltage, over-current protection and short circuit protection with auto recovery
- Standard 6kV surge protection with optional field replaceable surge protection device provides 20KA and 10KV protection meeting ANSI/IEEE C62.41.2 Category C High and Surge Location Category C3; Automatically takes fixture off-line for protection when device is consumed

### CONTROLS

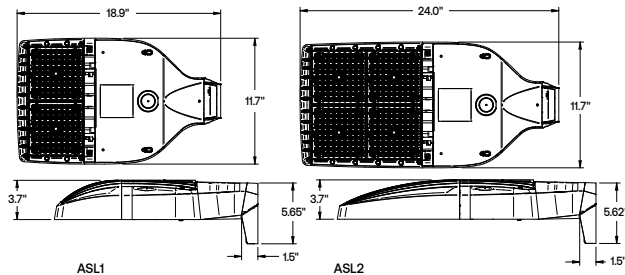
- Photo control, occupancy sensor and Zigbee wireless available for complete on/off and dimming control
- 7-pin ANSI C136.41-2013 photocontrol receptacle option available for twist lock photocontrols or wireless control modules (control accessories sold separately)
- Dimming Drivers are standard and dimming leads are extended out of the luminaire unless control options require connection to the dimming leads. Must specify if wiring leads are to be greater than the 6
- Please consult brand or sales representative when combining control and electrical options as some combinations may not operate as anticipated depending on your application

### CERTIFICATIONS

- Listed to UL1598 and CSA C22.2#2500-24 for wet locations and 40°C ambient temperatures
- DLC® (DesignLights Consortium Qualified), with some Premium Qualified configurations. Not all product variations on this page are DLC Qualified. Refer to <http://www.designlights.org/> for the most up-to-date list.
- 3G rated for ANSI C136.31 high vibration applications
- IP65 optical assembly
- Meets IDA recommendations using 3K CCT configuration at 0 degrees of tilt
- This product meets federal procurement law requirements under the Buy American Act (FAR 52.225-9) and Trade Agreements Act (FAR 52.225-11). See Buy America(n) Solutions (link to <https://www.currentlighting.com/resources/america-solutions>)

### WARRANTY

- 5 Year warranty



	Weight lbs. (kg)	EPA
ASL1	14.47 (6.56)	.46ft <sup>2</sup> 0.43m <sup>2</sup>
ASL2	17.47 (7.92)	.56ft <sup>2</sup> 0.52m <sup>2</sup>

# SLING Micro Strike

AREA/SITE/ROAD LIGHTER

DATE: \_\_\_\_\_ LOCATION: \_\_\_\_\_  
 TYPE: \_\_\_\_\_ PROJECT: \_\_\_\_\_  
 CATALOG #: \_\_\_\_\_

Gray Shading = Service Program Limit of 15 luminaires **QS10**

**ORDERING GUIDE**

Example: ASL1-80L-50-3K7-2-UNV-ASQU-BLT-7PRMD-40F

CATALOG #

**ORDERING INFORMATION**

Series	# LEDs	CCT/CRI	Distribution	Voltage	Mounting
ASL1 ASL Microstrike Series	80L-25 3,000 lm	3K7 3000K, 70 CRI	2 Type II	UNV Universal 120-277V	A Arm for Square poles with S2 drill pattern
	80L-39 4,500 lm	4K7 4000K, 70 CRI	3 Type III	120 120V	A3 Square Arm with 3.25"-3.75" OD RPA3 Adapter
	80L-50 6,000 lm	5K7 5000K, 70 CRI	4F Type 4F	208 208V	A4 Square Arm with 3.875"-4.5" OD RPA4 Adapter
	160L-70 9,000 lm		4W Type 4W	240 240V	A5 Square Arm with 5" OD RPA5 Adapter
	160L-100 12,000 lm		5QW Type 5QW	277 277V	MAF Mast Arm Fitter for 2-3/8" OD
	160L-115 15,000 lm			347 347V	
	160L-135 18,000 lm			480 480V	
ASL2 ASL Microstrike Series	320L-145 21,000 lm				
	320L-170 24,000 lm				
	320L-185 27,000 lm				
	320L-210 30,000 lm				
	320L-235 33,000 lm				
	320L-255 35,000 lm				

Network Control Options	Options	Color
<b>NXWS16F</b> NX Networked Wireless Enabled Integral NXSMP2-LMO PIR Occupancy Sensor with Automatic Dimming Photocell and Bluetooth Programming <sup>1,3,4</sup>	<b>F</b> Fusing	<b>BLT</b> Black Matte Textured
<b>NXWS40F</b> NX Networked Wireless Enabled Integral NXSMP2-HMO PIR Occupancy Sensor with Automatic Dimming Photocell and Bluetooth Programming <sup>1,3,4</sup>	<b>BC</b> Backlight Control	<b>BLS</b> Black Gloss Smooth
<b>NXW</b> NX Networked Wireless Radio Module NXRM2 and Bluetooth Programming, without Sensor <sup>3,4</sup>	<b>SP</b> 20kA & 10kV Surge Protector	<b>DBT</b> Dark Bronze Matte Textured
<b>Stand Alone Sensors</b>		<b>DBS</b> Dark Bronze Gloss Smooth
<b>7PR</b> 7 Pin Receptacle		<b>GTT</b> Graphite Matte Textured
<b>7PR-SC</b> 7 Pin Receptacle with shorting cap		<b>LGS</b> Light Grey Gloss Smooth
<b>7PR-MD8F</b> 7 pin receptacle with low voltage sensor at 8' mounting for external control accessory		<b>LGT</b> Light Grey Matte Textured
<b>7PR-MD40F</b> 7 pin receptacle with low voltage sensor at 40' mounting for external control accessory		<b>PSS</b> Platinum Silver Smooth
<b>7PR-TL</b> 7 Pin Receptacle with Photocontrol		<b>WHT</b> White Matte Textured
<b>Sensors</b>		<b>WHS</b> White Gloss Smooth
<b>BTS_F</b> Bluetooth Programmable, PIR Occupancy/Daylight Sensor, 360° lens <sup>2,4</sup>		<b>VG</b> Verde Green Textured
<b>BTSO_F</b> Bluetooth Programmable, PIR Occupancy/Daylight Sensor, 360° lens, up to 12' mounting height <sup>3,4</sup>		<b>Color Option</b>
		<b>CC</b> Custom Color

- Notes:
- 1 Must specify Voltage
  - 2 Replace "\_" with "14" for up to 14' mounting height, "40F" for 15-40' mounting height
  - 3 Replace "\_" with "12" for up to 12' mounting height
  - 4 Available at 50W or higher only








# SLING Micro Strike

AREA/SITE/ROAD LIGHTER

## OUTDOOR LIGHTING CONTROLS OPTIONS

### CONTROLS FUNCTIONALITY



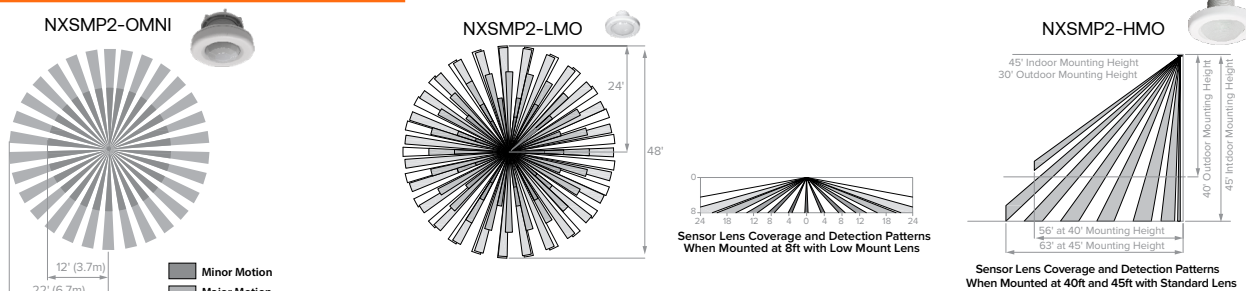
Control Option Ordering Logic & Description		Control Option Functionality									Control Option Components	
		Networkable	Grouping	Scheduling	Occupancy/Motion	Daylight Harvesting	0-10V Dimming	On/Off Control	Bluetooth App Programming	Sensor Height		
NX Wireless	NXW	✓	✓	✓	-	-	✓	✓	✓	-		NXRM2-H
	NXWS12F	✓	✓	✓	✓	✓	✓	✓	✓	12ft		NXSMP2-OMNI-O
	NXWS16F	✓	✓	✓	✓	✓	✓	✓	✓	16ft		NXSMP2-LMO
	NXWS40F	✓	✓	✓	✓	✓	✓	✓	✓	40ft		NXSMP2-HMO
Independent	BTSO-12F	-	-	-	✓	✓	✓	✓	✓	12ft		BTSMP-OMNI-O
	BTS-14F	-	-	-	✓	✓	✓	✓	✓	14ft		BTSMP-LMO
	BTS-40F	-	-	-	✓	✓	✓	✓	✓	40ft		BTSMP-HMO

### DEFAULT SETTINGS

NX Wireless	Occupancy Sensor	Enabled
	Occupancy Sensor Sensitivity	7
	Occupancy Sensor Timeout	15 Minutes
	Occupied Dim Level	100%
	Unoccupied Dim Level	0%
	Daylight Sensor	Disabled
	Bluetooth	Enabled
	2.4GHz Wireless Mesh	On
	"Passcode Factory Passcode: HubbN3T!"	Enabled

Stand Alone	Occupancy Sensor	Enabled
	Occupancy Sensor Sensitivity	7
	Occupancy Sensor Timeout	8 Minutes
	Occupied Dim Level	100%
	Unoccupied Dim Level	50%
	Daylight Sensor	Disabled

### NX WIRELESS COVERAGE PATTERNS



### NX LIGHTING CONTROLS FREE APP

### CONTROLS TECH SUPPORT 800-888-8006 (7:00 AM - 7:00 PM)



The NX Lighting Controls App is free to use mobile application for programming both NX Lighting Controls System or Standalone Bluetooth Sensors. The mobile app allows you to configure devices, discover and setup wireless enable luminaires and program NX system settings.

Apple App: <https://apps.apple.com/us/app/nx-lighting-controls/id962112904>

Google Play: [https://play.google.com/store/apps/details?id=io.cordova.NXBTR&hl=en\\_US&q=US](https://play.google.com/store/apps/details?id=io.cordova.NXBTR&hl=en_US&q=US)



Apple App






Google Play

# SLING Micro Strike

AREA/SITE/ROAD LIGHTER

## OUTDOOR LIGHTING CONTROLS OPTIONS

### CONTROLS FUNCTIONALITY

	Control Option Ordering Logic & Description		Control Option Functionality								Control Option Components	
			Networkable	Grouping	Scheduling	Occupancy/Motion	Daylight Harvesting	0-10V Dimming	On/Off Control	Bluetooth App Programming		Sensor Height
Independent	7PR	7-Pin Receptacle	-	-	Paired with external control	-	Paired with external control	-	Paired with external control	-	-	 7PR
	7PR-SC	7-Pin Receptacle with shorting cap	-	-	-	-	-	-	-	-	-	 7PR-SC
	7PR-TL	7-Pin with photocontrol	-	-	-	-	✓	-	✓	-	-	 7PR-TL

### ACCESSORIES (ORDERED SEPARATELY)

Catalog Number	Description
<input type="checkbox"/> ASL1-HSS-90-B-XXX <sup>1</sup>	House Side Shield Back 90 deg
<input type="checkbox"/> ASL1-HSS-90-F-XXX <sup>1</sup>	House Side Shield Front 90 deg
<input type="checkbox"/> ASL1-HSS-90-S-XXX <sup>1</sup>	House Side Shield Side 90 deg
<input type="checkbox"/> ASL1-HSS-270-BSS-XXX <sup>1</sup>	House Side Shield Back, Side & Side 270 deg
<input type="checkbox"/> ASL1-HSS-270-FSS-XXX <sup>1</sup>	House Side Shield Front, Side & Side 270 deg
<input type="checkbox"/> ASL1-HSS-270-FSB-XXX <sup>1</sup>	House Side Shield Front, Side & Back 270 deg
<input type="checkbox"/> ASL1-HSS-360-XXX <sup>1</sup>	House Side Shield 360 deg
<input type="checkbox"/> ASL2-HSS-90-B-XXX <sup>1</sup>	House Side Shield Back 90 deg
<input type="checkbox"/> ASL2-HSS-90-F-XXX <sup>1</sup>	House Side Shield Front 90 deg
<input type="checkbox"/> ASL2-HSS-90-S-XXX <sup>1</sup>	House Side Shield Side 90 deg
<input type="checkbox"/> ASL2-HSS-270-BSS-XXX <sup>1</sup>	House Side Shield Back, Side & Side 270 deg
<input type="checkbox"/> ASL2-HSS-270-FSS-XXX <sup>1</sup>	House Side Shield Front, Side & Side 270 deg
<input type="checkbox"/> ASL2-HSS-270-FSB-XXX <sup>1</sup>	House Side Shield Front, Side & Back 270 deg
<input type="checkbox"/> ASL2-HSS-360-XXX <sup>1</sup>	House Side Shield 360 deg
<input type="checkbox"/> ASL-MAF	Mast arm kit with wildlife shield for mounting on 2 3/8" OD arms
<input type="checkbox"/> SETA2-XX <sup>1</sup>	Square pole tenon adapter (4 at 90 degrees) (2 3/8" OD tenon)
<input type="checkbox"/> RETA2-XX <sup>1</sup>	Round pole tenon adapter (4 at 90 degrees) (2 3/8" OD tenon), requires CLIS-RPA4-ACC-XX for each luminaire
<input type="checkbox"/> RARBC80L	Backlight Control 80L
<input type="checkbox"/> RARBC160L	Backlight Control 160L
<input type="checkbox"/> RARBC320L	Backlight Control 320L
<input type="checkbox"/> RARBC480L	Backlight Control 480L
<input type="checkbox"/> CLIS-RPA*-ACC-CC <sup>1</sup>	Round Pole Adapter (*denotes pole diameter 3=3.25"-3.75", 4=3.875"-4.5", 5=5" and paint color replaces CC)
<input type="checkbox"/> ASL-ARMMTG-XX <sup>1</sup>	Arm mounting kit for side of pole attachment
<input type="checkbox"/> WB-AREA-XX <sup>1</sup>	Wall bracket, Compatible with standard arm mount option
<input type="checkbox"/> ASL-MAF	Mast arm kit with wildlife shield for mounting on 2 3/8" OD arms

<sup>1</sup> Replace XX or XXX with color choice, eg.: DB for Dark Bronze or BLT for Black Matte Textured

# SLING Micro Strike

AREA/SITE/ROAD LIGHTER

DATE:	LOCATION:
TYPE:	PROJECT:
CATALOG #:	

## PERFORMANCE DATA

Description	Nominal Wattage	System Watts	Dist. Type	5K (5000K NOMINAL 70 CRI)					4K (4000K NOMINAL 70 CRI)					3K (3000K NOMINAL 70 CRI)				
				Lumens	LPW <sup>1</sup>	B	U	G	Lumens	LPW <sup>1</sup>	B	U	G	Lumens	LPW <sup>1</sup>	B	U	G
ASL1	25	25.4	2	3430	135	2	0	2	3413	134	2	0	2	3225	127	2	0	2
			3	3465	136	2	0	2	3448	136	2	0	2	3259	128	2	0	2
			4F	3204	126	1	0	1	3201	126	1	0	1	3127	123	1	0	1
			4W	3401	134	2	0	3	3384	133	2	0	3	3198	126	2	0	3
			5QW	3483	137	4	0	2	3466	136	4	0	2	3274	129	4	0	2
	39	38.0	4F	5005	132	1	0	1	5000	132	1	0	1	4885	129	1	0	1
			2	5232	138	3	0	3	5206	137	3	0	3	4919	129	3	0	3
			3	5287	139	2	0	2	5260	138	2	0	2	4971	131	2	0	2
			4W	5188	137	2	0	3	5163	136	2	0	3	4879	128	2	0	3
	50	49.7	2	6295	127	2	0	2	6263	126	2	0	2	5918	119	2	0	2
			3	6361	128	2	0	2	6329	127	2	0	2	5981	120	2	0	2
			4F	6407	129	1	0	2	6401	129	1	0	2	6254	126	1	0	2
			4W	6243	126	2	0	3	6212	125	2	0	3	5870	118	2	0	3
	70	68.4	5QW	6392	129	4	0	2	6360	128	4	0	2	6009	121	4	0	2
			2	9460	138	3	0	3	9413	138	3	0	3	8895	130	3	0	3
			3	9559	140	2	0	2	9512	139	2	0	2	8989	131	2	0	2
			4F	8988	131	2	0	2	8979	131	2	0	2	8772	128	2	0	2
	100	88.0	4W	9382	137	2	0	3	9335	136	2	0	3	8822	129	2	0	3
			5QW	9610	140	4	0	2	9562	140	4	0	2	9034	132	4	0	2
			2	11939	136	2	0	2	11885	135	2	0	2	11232	128	2	0	2
			3	12064	138	2	0	2	12010	136	2	0	2	11349	129	2	0	2
	115	109.7	4F	12832	146	2	0	2	12819	146	2	0	2	12524	142	2	0	2
			4W	11840	135	2	0	3	11787	135	2	0	3	11138	127	2	0	3
			5QW	12132	138	4	0	2	12071	138	4	0	2	11404	130	4	0	2
			2	15651	143	2	0	2	15577	142	2	0	2	14977	137	2	0	2
	135	133.3	3	15487	141	2	0	2	15413	140	2	0	2	14820	135	2	0	2
			4F	14754	134	2	0	2	14740	134	2	0	2	14401	131	2	0	2
			4W	15305	140	2	0	3	15232	139	2	0	3	14646	134	2	0	3
5QW			15731	143	4	0	2	15632	143	4	0	2	15031	137	4	0	2	
2			18089	136	3	0	3	17999	135	3	0	3	17275	130	3	0	3	
			3	17863	134	2	0	2	17777	133	2	0	2	17094	128	2	0	2
			4F	17317	130	3	0	3	17300	130	3	0	3	16902	127	2	0	3
			4W	17653	133	2	0	3	17568	132	2	0	3	16893	127	2	0	3
			5QW	18155	136	4	0	2	18030	135	4	0	2	17338	130	4	0	2

ASL2 Performance Data on next page

<sup>1</sup> VAC input Lumen values are from photometric test performed in accordance with IESNA LM-79-08. Data is considered to be representative of the configurations. Actual performance may differ as a result of end-user environment and application.

# SLING Micro Strike

AREA/SITE/ROAD LIGHTER

DATE:	LOCATION:
TYPE:	PROJECT:
CATALOG #:	

## PERFORMANCE DATA

Description	Nominal Wattage	System Watts	Dist. Type	5K (5000K NOMINAL 70 CRI)					4K (4000K NOMINAL 70 CRI)					3K (3000K NOMINAL 70 CRI)				
				Lumens	LPW <sup>1</sup>	B	U	G	Lumens	LPW <sup>1</sup>	B	U	G	Lumens	LPW <sup>1</sup>	B	U	G
ASL2	145	143.0	2	21007	147	3	0	4	20902	146	3	0	4	20061	140	3	0	4
			3	20842	146	3	0	4	20738	145	3	0	4	19904	139	3	0	4
			4F	19490	136	3	0	3	19471	136	3	0	3	19023	133	3	0	3
			4W	20595	144	3	0	5	20492	143	3	0	5	19669	138	3	0	5
			5QW	21130	148	5	0	4	21024	147	5	0	4	20179	141	5	0	4
	170	168.0	2	24452	146	3	0	4	24330	145	3	0	4	23351	139	3	0	4
			3	24260	144	3	0	4	24139	144	3	0	4	23168	138	3	0	4
			4F	22847	136	3	0	4	22824	136	3	0	4	22299	133	3	0	3
			4W	23972	143	3	0	5	23853	142	3	0	5	22895	136	3	0	5
			5QW	24596	146	5	0	4	24472	146	5	0	4	23488	140	5	0	4
	185	185.0	2	26658	144	4	0	5	26525	143	4	0	5	25457	138	4	0	5
			3	26449	143	3	0	4	26316	142	3	0	4	25258	137	3	0	4
			4F	24834	134	3	0	4	24809	134	3	0	4	24238	131	3	0	3
			4W	26135	141	4	0	5	26005	141	4	0	5	24961	135	4	0	5
			5QW	26814	145	5	0	5	26680	144	5	0	5	25607	138	5	0	5
	210	210.0	2	29872	142	3	0	4	29723	142	3	0	4	28536	136	3	0	4
			3	29638	141	3	0	4	29489	140	3	0	4	28303	135	3	0	4
			4F	30623	146	3	0	4	30592	146	3	0	4	29598	142	3	0	4
			4W	29286	139	3	0	5	29140	139	3	0	5	27970	133	3	0	5
			5QW	30047	143	5	0	4	29896	142	5	0	4	28694	137	5	0	4
	235	235.0	2	32960	140	3	0	4	32796	140	3	0	4	31475	134	3	0	4
			3	32701	139	3	0	4	32537	138	3	0	4	31229	133	3	0	4
			4F	31582	134	3	0	4	31550	134	3	0	4	30825	131	3	0	4
			4W	32313	138	3	0	5	32152	137	3	0	5	30861	131	3	0	5
			5QW	33153	141	5	0	4	32987	140	5	0	4	31660	135	5	0	4
255	261.2	2	36216	142	4	0	5	36035	141	4	0	5	34585	136	4	0	5	
		3	35932	141	3	0	4	35752	140	3	0	4	34314	135	3	0	4	
		4F	34254	131	3	0	4	34219	131	3	0	4	33432	128	3	0	4	
		4W	35505	139	4	0	5	35329	139	4	0	5	33910	133	4	0	5	
		5QW	36428	143	5	0	5	36246	142	5	0	5	34788	136	5	0	5	

<sup>1</sup> VAC input Lumen values are from photometric test performed in accordance with IESNA LM-79-08. Data is considered to be representative of the configurations. Actual performance may differ as a result of end-user environment and application.

# SLING Micro Strike

AREA/SITE/ROAD LIGHTER

## ELECTRICAL DATA

Family	Nominal Wattage	Input Voltage (Volts)	Current (AMPS)	System Power (Watts)
SLING (ASL1)	25	120	0.21	25.4
		208	0.12	
		240	0.11	
		277	0.09	
		347	0.07	
		480	0.05	
	39	120	0.32	38
		208	0.18	
		240	0.16	
		277	0.14	
		347	0.11	
		480	0.08	
	50	120	0.41	49.7
		208	0.24	
		240	0.21	
		277	0.18	
		347	0.14	
		480	0.10	
	70	120	0.57	68.4
		208	0.33	
		240	0.29	
		277	0.25	
		347	0.20	
		480	0.14	
	100	120	0.73	88
		208	0.42	
		240	0.37	
		277	0.32	
		347	0.25	
		480	0.18	
115	120	0.91	109.7	
	208	0.53		
	240	0.46		
	277	0.40		
	347	0.32		
	480	0.23		
135	120	1.11	133.3	
	208	0.64		
	240	0.56		
	277	0.48		
	347	0.38		
	480	0.28		

SLING (ASL2) Next Page

# SLING Micro Strike

AREA/SITE/ROAD LIGHTER

## ELECTRICAL DATA (CONT'D)

Family	Nominal Wattage	Input Voltage (Volts)	Current (AMPS)	System Power (Watts)
SLING (ASL2)	145	120	1.19	143.0
		208	0.69	
		240	0.60	
		277	0.52	
		347	0.41	
		480	0.30	
	170	120	1.40	168.0
		208	0.81	
		240	0.70	
		277	0.61	
		347	0.48	
		480	0.35	
	185	120	1.54	185.0
		208	0.89	
		240	0.77	
		277	0.67	
		347	0.53	
		480	0.39	
	210	120	1.75	210.0
		208	1.01	
		240	0.88	
		277	0.76	
		347	0.61	
		480	0.44	
	235	120	1.96	235.0
		208	1.13	
		240	0.98	
		277	0.85	
		347	0.68	
		480	0.49	
255	120	2.18	261.2	
	208	1.26		
	240	1.09		
	277	0.94		
	347	0.75		
	480	0.54		

# SLING Micro Strike

AREA/SITE/ROAD LIGHTER

## PROJECTED LUMEN MAINTENANCE

Ambient Temperature	OPERATING HOURS					
	0	25,000	TM-21-11' L96 60,000	50,000	100,000	L70 (Hours)
25°C / 77°F	1.00	0.97	0.96	0.95	0.91	408,000
40°C / 104°F	0.99	0.96	0.95	0.94	0.89	356,000

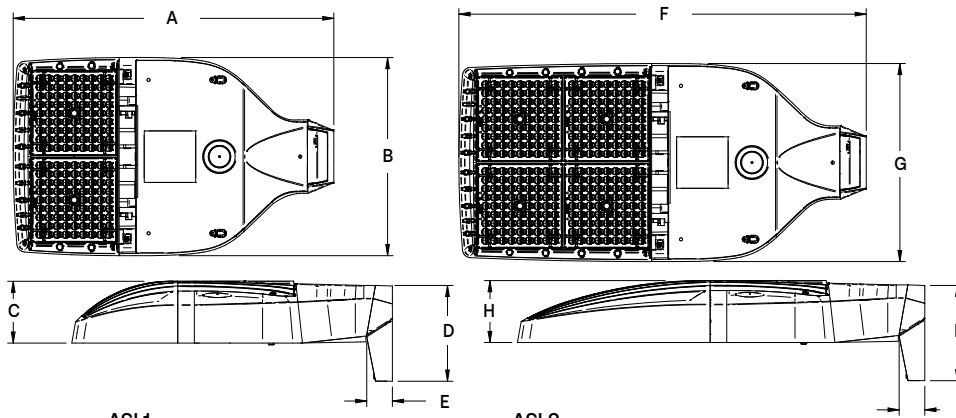
1. Projected per IESNA TM-21-11 (\* Cree XP-L, 2100mA, 105°C Ts, 6,000hrs)

## LUMINAIRE AMBIENT TEMPERATURE FACTOR (LATF)

Ambient Temperature		Lumen Multiplier
0° C	32° F	1.06
10° C	50° F	1.03
20° C	68° F	1.01
25° C	77° F	1.00
30° C	86° F	0.99
40° C	104° F	0.97

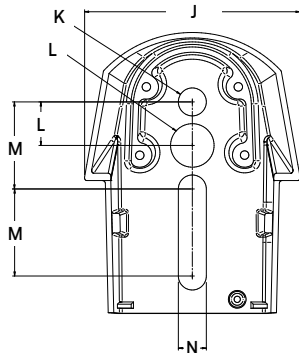
Use these factors to determine relative lumen output for average ambient temperatures from 0-40°C (32-104°F).

## DIMENSIONS



Weight	
ASL1	14.47 lbs (6.56 kgs)
ASL2	17.47 lbs (7.92 kgs)

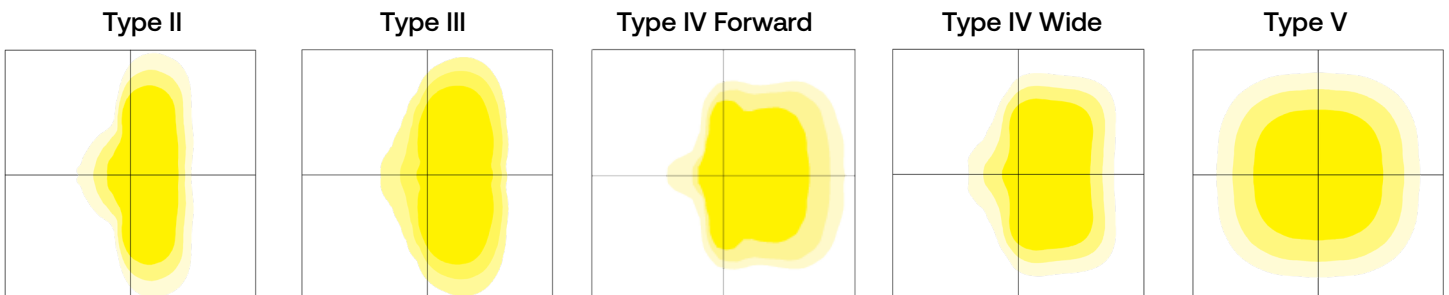
ASL1					ASL2								
A	B	C	D	E	F	G	H	I	ASL1 EPA@0°	ASL2 EPA@0°	ASL1 w/ HSS	ASL2 w/ HSS	
18.9"	11.7"	3.7"	5.65"	1.5"	24.0"	11.7"	3.7"	5.62"	.46 ft. <sup>2</sup>	.56 ft. <sup>2</sup>	.73 ft. <sup>2</sup>	1.01 ft. <sup>2</sup>	
480mm	297mm	94mm	144mm	38mm	610mm	297mm	94mm	143mm	.043 m <sup>2</sup>	.052 m <sup>2</sup>	.068 m <sup>2</sup>	.094 m <sup>2</sup>	



J	K	L	M	N
4.33"	.562"	.875"	1.75"	.562"
111mm	14.3mm	22.2mm	44.3mm	14.3mm

## PHOTOMETRY

The following diagrams represent the general distribution options offered for this product. For detailed information on specific product configurations, see [website photometric test reports](#).



# SLING Micro Strike

AREA/SITE/ROAD LIGHTER

DATE:	LOCATION:
TYPE:	PROJECT:
CATALOG #:	

## ADDITIONAL INFORMATION (CONT'D)

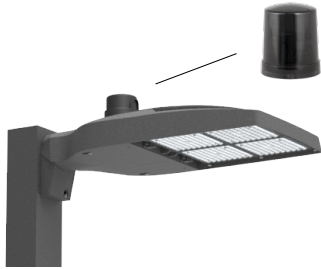
### OCCUPANCY SENSOR

- Individual fixture control
- Dims product when space is not occupied

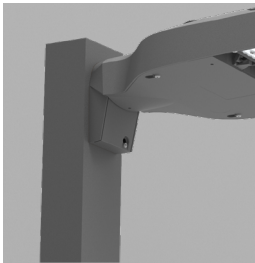


### 7-PIN RECEPTACLE

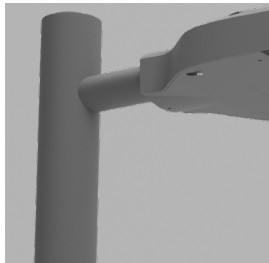
- Compatible with 3-pin, 5-pin or 7-pin photocontrols
- Turns fixture on when sun sets, off when sun rises
- For use with a variety of control platforms



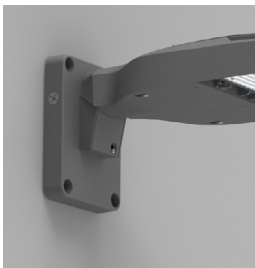
### MOUNTING



**Arm Mount** – Fixture ships with integral arm for ease of installation. Compatible with Outdoor S2 drill pattern.

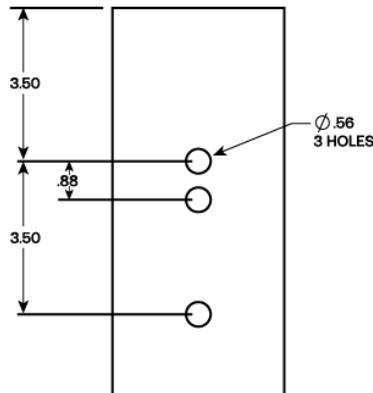


**MAF** – Fits 2-3/8" OD arms Roadway applications.



**Wall Mount** – Wall mount bracket designed for building mount applications.

### DRILL PATTERN S2

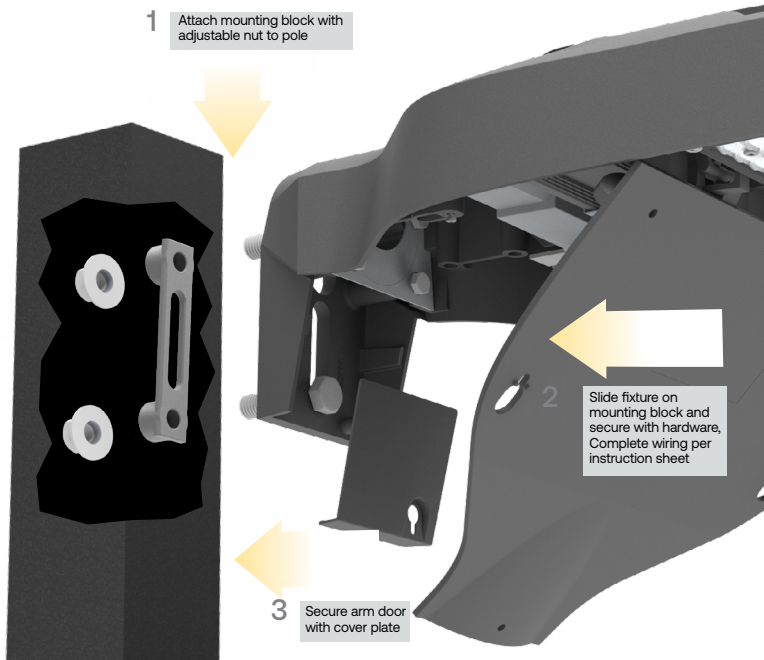


# SLING Micro Strike

AREA/SITE/ROAD LIGHTER

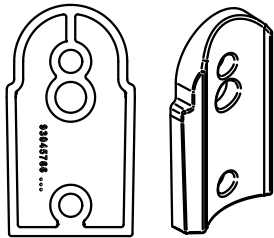
## ADDITIONAL INFORMATION (CONT'D)

### MOUNTING (CONT'D)



**Square Arm Mounting Block** –Arm mount block for ease of installation. Compatible with S2 drill patterns from 2.5" to 4.5"

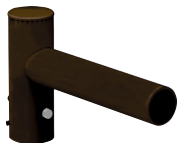
### ACCESSORY



ROUND POLE ADAPTER



WB-AREA-XX



**SPOKE BRACKET** (single arm shown)  
Horizontal round arm tenon adapters for use with MAF mounting type or accessory kit. Reference SBH Spoke Pole Top Brackets for ordering information.

# SLING Micro Strike

AREA/SITE/ROAD LIGHTER

DATE: \_\_\_\_\_ LOCATION: \_\_\_\_\_

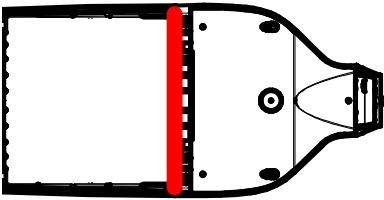
TYPE: \_\_\_\_\_ PROJECT: \_\_\_\_\_

CATALOG #: \_\_\_\_\_

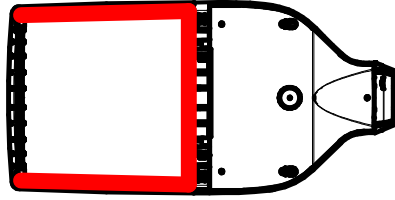
## ADDITIONAL INFORMATION (CONT'D)

### CONFIGURATIONS

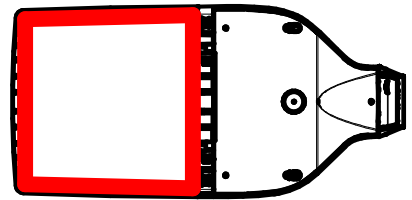
ASLx HSS-90-B-xx



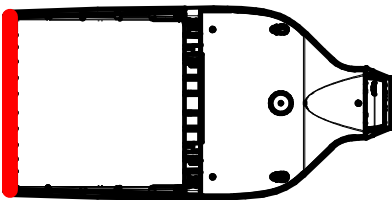
ASLx HSS-270-BSS-xx



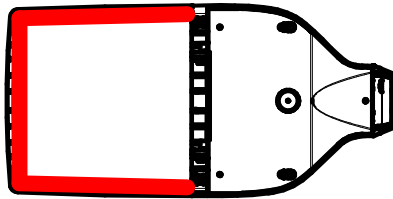
ASLx HSS-360-xx



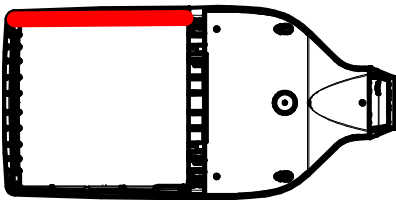
ASLx HSS-90-F-xx



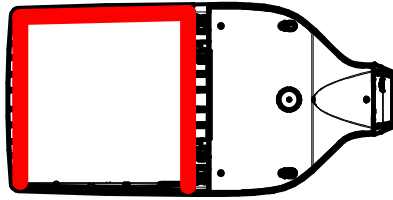
ASLx HSS-270-FSS-xx



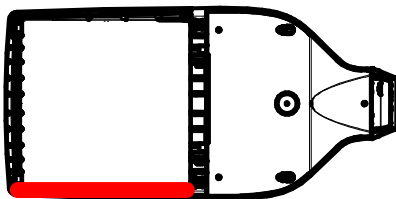
ASLx HSS-90-S-xx



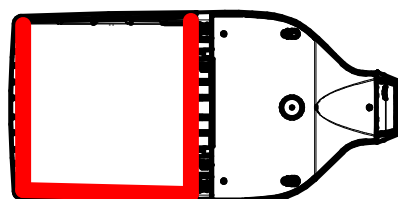
ASLx HSS-270-FSB-xx



ASLx HSS-90-S-xx



ASLx HSS-270-FSB-xx





LED 26W Wall packs. patent-pending thermal management system. 100,000 hour L70 lifespan. 5-year, no-compromise warranty.

Color: Bronze

Weight: 7.1 lbs

<b>Project:</b>	<b>Type:</b>
<b>Prepared By:</b>	<b>Date:</b>

Driver Info		LED Info	
Type	Constant Current	Watts	26W
120V	0.22A	Color Temp	3000K (Warm)
208V	0.13A	Color Accuracy	70 CRI
240V	0.11A	L70 Lifespan	100,000 Hours
277V	0.10A	Lumens	3,749 lm
Input Watts	29.1W	Efficacy	128.8 lm/W

## Technical Specifications

### Compliance

#### UL Listed:

Suitable for wet locations. Suitable for mounting within 4 ft (1.2m) of the ground.

#### IP Rating:

Ingress protection rating of IP66 for dust and water

#### DLC Listed:

This product is on the Design Lights Consortium (DLC) Qualified Products List and is eligible for rebates from DLC Member Utilities. Designed to meet DLC 5.1 requirements.  
DLC Product Code: P00001750

### Performance

#### Lifespan:

100,000-Hour LED lifespan based on IES LM-80 results and TM-21 calculations

#### Wattage Equivalency:

Equivalent to 150W Metal Halide

### Electrical

#### Driver:

Constant Current, Class 2, 120-277V, 50/60Hz, 120V: 0.22A, 208V: 0.13A, 240V: 0.11A, 277V 0.10A

#### Dimming Driver:

Driver includes dimming control wiring for 0-10V dimming systems. Requires separate 0-10V DC dimming circuit. Dims down to 10%.

#### THD:

10.77% at 120V, 11.79% at 277V

#### Power Factor:

98.2% at 120V, 95.6% at 277V

### Construction

#### Finish:

Formulated for high durability and long-lasting color

#### Ambient Temperature:

Suitable for use in up to 40°C (104°F)

#### Cold Weather Starting:

The minimum starting temperature is -40°C (-40°F)

#### Green Technology:

Mercury and UV free. RoHS-compliant components.

### LED Characteristics

#### Color Consistency:

3-step MacAdam Ellipse binning to achieve consistent fixture-to-fixture color

#### Color Stability:

LED color temperature is warrantied to shift no more than 200K in color temperature over a 5-year period

#### Color Uniformity:

RAB's range of Correlated Color Temperature follows the guidelines of the American National Standard for Specifications for the Chromaticity of Solid State Lighting (SSL) Products, ANSI C78.377-2017.

### Other

#### Patents:

The WPLED design is protected by U.S. Pat. D634878, Canada Pat 134878, China Pat. CN3016490645.

#### Warranty:

RAB warrants that our LED products will be free from defects in materials and workmanship for a period of five (5) years from the date of delivery to the end user, including coverage of light output, color stability, driver performance and fixture finish. RAB's warranty is subject to all terms and conditions found at [rablighting.com/warranty](http://rablighting.com/warranty).

#### FTC Country of Origin:

This product was assembled in the USA by RAB using imported components

#### Buy American Act Compliance:

This product complies with the Buy American Act

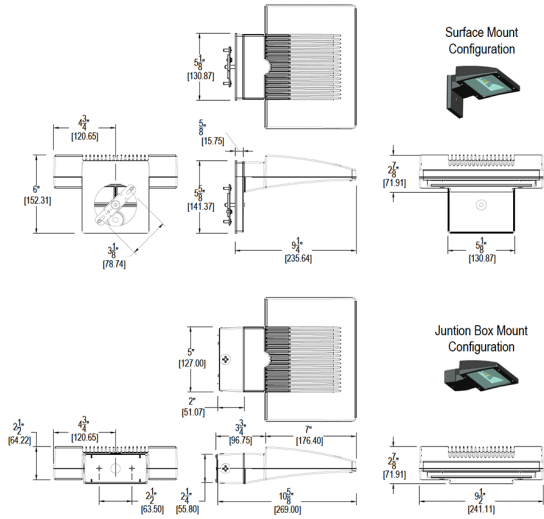
**Technical Specifications (continued)**

**Optical**

**BUG Rating:**

B1 U0 G0

**Dimensions**



**Features**

- High performance LED light engine
- Maintains 70% of initial lumens at 100,000-hours
- Weatherproof high temperature silicone gaskets
- Superior heat sinking with die cast aluminum housing and external fins
- 100 up to 277 Volts
- 5-Year, No-Compromise Warranty