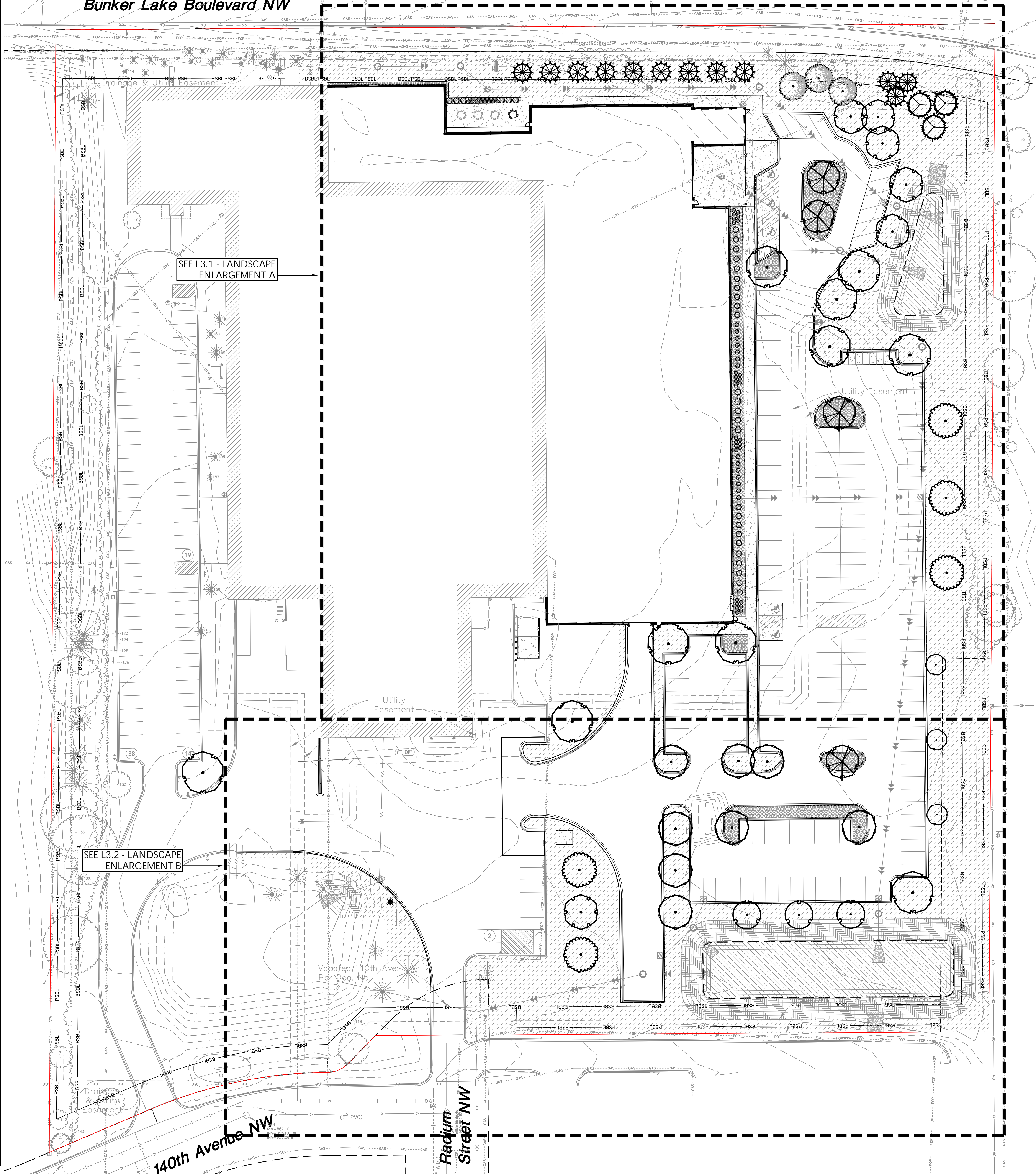


(County State Aid Highway No. 116)
Bunker Lake Boulevard NW



CITY REQUIREMENTS:

ROAD FRONTAGE PLANTING REQUIREMENTS:
FOR EVERY 35 FEET OF PUBLIC ROAD FRONTAGE, ONE OVERSTORY TREE SHALL BE PLANTED ADJACENT TO THE ROAD RIGHT-OF-WAY ON PRIVATE PROPERTY. THESE PLANTINGS ARE CREDITED TOWARD THE MINIMUM PLANTING REQUIREMENTS FOR THE DISTRICT.

TOTAL PUBLIC ROAD FRONTAGE: 960 LF
TOTAL FRONTAGE TREES REQUIRED: 28
EXISTING FRONTAGE TREES TO REMAIN: 24
PROPOSED FRONTAGE TREES: 15
TOTAL FRONTAGE TREES PROVIDED: 39

PARKING LOT LANDSCAPING REQUIREMENTS:
ALL PARKING LOTS ARE REQUIRED TO PROVIDE INTERNAL AND/OR ADJACENT OVERSTORY TREE PLANTINGS IN AN EFFORT TO SHADE PARKING SURFACES AND PROVIDE VISUAL RELIEF.
- ONE TREE PER EVERY TEN PARKING SPACES
- EVERY OVERSTORY TREE PLANTING SHALL BE PROVIDED WITH A PLANTING AREA OF AT LEAST 162 SQUARE FEET (EQUIVALENT OF A NINE FOOT BY 18 FOOT PARKING STALL).
- ACCEPTABLE GROUND COVER MATERIALS INCLUDE SOD, MULCH, AND OTHER NATURAL GROUND/LANDSCAPING ROCK AND PLASTIC UNDERLAYMENT IS PROHIBITED IN PLANTING ISLANDS.

TOTAL NUMBER OF PARKING STALLS: 269
REQUIRED NUMBER OF PARKING LOT TREES: 27
EXISTING NUMBER OF PARKING LOT TREES: 8
PROPOSED NUMBER OF PARKING LOT TREES: 30
TOTAL PROVIDED PARKING LOT TREES: 38

CANOPY COVERAGE REQUIREMENTS:
MULTIPLY THE THE IMPERVIOUS AREA/SITE AREA RATIO BY THE SQUARE FOOTAGE OF THE PERVIOUS AREA TO CALCULATE THE REQUIRED CANOPY COVER SQUARE FOOTAGE FOR THE PROJECT AREA

IMPERVIOUS AREA: 316.39 SF
SITE AREA: 500.962 SF
RATIO: .63

PERVIOUS AREA: 184.926 SF
REQUIRED CANOPY COVER: 116,504 SF (.63 x 184,926)

EXISTING CANOPY COVER: 48,670 SF
PROPOSED CANOPY COVER: 68,649 SF
TOTAL CANOPY COVER PROVIDED: 117,319 SF

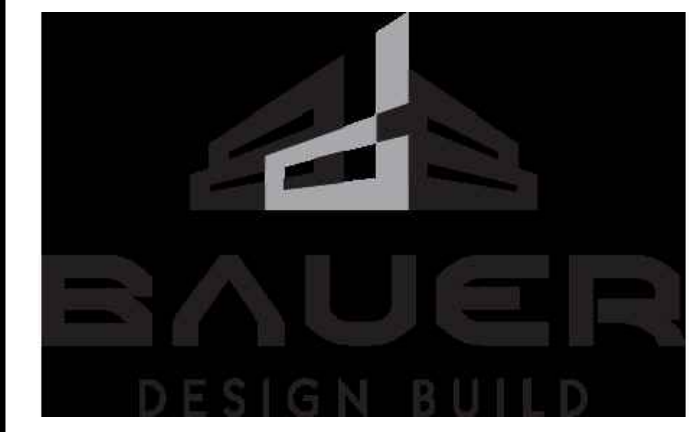
PLANT SCHEDULE

SYMBOL	CODE	BOTANICAL NAME	COMMON NAME	CONT	SIZE
DECIDUOUS TREES					
	AE-G	AESCULUS GLABRA	OHIO BUCKEYE	B & B	2.5" CAL
	CE-O	CELTIS OCCIDENTALIS	COMMON HACKBERRY	B & B	2.5" CAL
	GL-T	GLEDITSIA TRIACANTHOS 'IMPCOLE'™	IMPERIAL HONEYLOCUST	B & B	2.5" CAL
	GY-D	GYNOCLADUS DIOICA	KENTUCKY COFFEETREE	B & B	2.5" CAL
	QU-M	QUERCUS MACROCARPA	BURR OAK	B & B	2.5" CAL
	UL-A	ULMUS AMERICANA 'PRINCETON'	PRINCETON ELM	B & B	2.5" CAL
EVERGREEN TREES					
	PI-G	PICEA GLAUCA 'DENSATA'	BLACK HILLS SPRUCE	B & B	8' HGT
	PS	PINUS STROBUS	WHITE PINE	B&B	
	TO	THUJA OCCIDENTALIS	EASTERN WHITE CEDAR	B&B	6' HGT
ORNAMENTAL TREES					
	AM-G	AMELANCHIER X GRANDIFLORA 'AUTUMN BRILLIANCE'	AUTUMN BRILLIANCE SERVICEBERRY	B & B	1.5" CAL
SHRUBS					
	AR-E	ARONIA MELANOCARPA ELATA	GLOSSY BLACK CHOKEBERRY	5 GAL	24" HGT
	CO-F	CORNUS SERICEA 'ARTIC FIRE'	ARCTIC FIRE DOGWOOD	5 GAL	24" HGT
	PY-O	PHYSOCARPUS OPULIFOLIUS 'LITTLE DEVIL'™	LITTLE DEVIL NINEBARK	5 GAL	24" HGT
	SPL	SPIREA JAPONICA 'LITTLE PRINCESS'	LITTLE PRINCESS SPIREA	5 GAL	24" HGT
CONIFEROUS SHRUBS					
	JU-C	JUNIPERUS CHINENSIS 'MONLEP'	MINT JULEP JUNIPER	5 GAL	18" SPRD
GRASSES					
	CA-K	CALAMAGROSTIS X ACUTIFLORA 'KARL FOERSTER'	FEATHER REED GRASS	1 GAL	
GROUND COVERS					
	EW-M		MNDOT SOUTHERN TALLGRASS ROADSIDE MIX		
	RM-1		ROCK MULCH		
	TS-1		TURF SOD		
SYMBOL	CODE	BOTANICAL NAME	COMMON NAME		

NOT FOR CONSTRUCTION



POPE DESIGN GROUP
767 N. EUSTIS STREET, SUITE 190
ST. PAUL, MINNESOTA 55114
651.642.9200
WWW.POPEDESIGN.COM



2025 OFFICE AND PRODUCTION ADDITION
6151 140TH AVE NW
RAMSEY, MN 55303

LOUCKS
PLANNING
CIVIL ENGINEERING
LAND SURVEYING
LANDSCAPE ARCHITECTURE
ENVIRONMENTAL
12755 Highway 55, Suite R100
Plymouth, MN 55441
763.424.5505
www.loucksinc.com
LOUCKS PROJECT NO. 250341

OVERALL LANDSCAPE PLAN

ISSUES & REVISIONS	DATE
SD PRICING SET	08/29/2025
PERMIT SET	09/11/2025

I hereby certify that this plan, specification and report was prepared by me or under my direct supervision and that I am a duly Licensed Landscape Architect under the laws of the State of Minnesota.

JORDAN D. GEDROSE - PLA
Date: 08/29/2025 Lic No: 58254

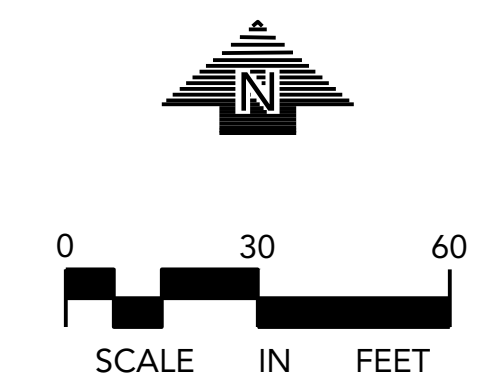
COMMISSION NO: 11726-25090
DRAWN BY: JDL
CHECKED BY: TDG

SHEET

L2.1

CALL BEFORE YOU DIG!
Gopher State One Call
TWIN CITY AREA: 651-454-0002
TOLL FREE: 1-800-252-1166

WARNING:
THE CONTRACTOR SHALL BE RESPONSIBLE FOR CALLING FOR LOCATIONS OF ALL EXISTING UTILITIES. THEY SHALL COOPERATE WITH ALL UTILITY COMPANIES IN MAINTAINING THEIR SERVICE AND / OR RELOCATION OF LINES.
THE CONTRACTOR SHALL CONTACT GOPHER STATE ONE CALL AT 651-454-0002 AT LEAST 48 HOURS IN ADVANCE FOR THE LOCATIONS OF ALL UNDERGROUND WIRES, CABLES, CONDUITS, PIPES, MANHOLES, VALVES OR OTHER BURIED STRUCTURES BEFORE DIGGING. THE CONTRACTOR SHALL REPAIR OR REPLACE THE ABOVE WHEN DAMAGED DURING CONSTRUCTION AT NO COST TO THE OWNER.



W:\2025\250341\CADD\DATA\LANDSCAPE_Land\Sheet\Files\L2.1 - LANDSCAPE PLAN.dwg